

Well Location Plat BAT 13D-24-07-96

Section 24, Township 7 South, Range 96 West

Northwest Corner Sec. 24
2" Alum. Cap L.S. #17492
2006

N 88°58'10" W

5411.26'

Northeast Corner Sec. 24
3" Brass Cap L.S. #11643
1982

Note:

The measurement for determining any Designated Setback Location shall be made from the center of the Well or Production Facility nearest any Building Unit to the nearest wall or corner of such Building Unit.

Building - 302'
Building Unit - 1306'
HOBV - 4414'
DOAA - N/A
Public Road - 255'
Above Grnd Util. - 245'
Railroad - 4236'
Property Line - 659'

Current Surface Land Use :
Gas well pad



Graphic Scale in Feet
1"=1000'

Bottom Hole: BAT 13D-24-07-96

1473' FSL

970' FWL

NAD83

Lat: 39.419587799°N

Long: 108.063855674°W

NAD27

Lat: 39.419609600°N

Long: 108.063224666°W

Surface: BAT 13D-24-07-96

1913' FSL

1957' FWL

Gnd El= 5183

Pad El= 5182.5

NAD83

Lat: 39.420866218°N

Long: 108.060380209°W

NAD27

Lat: 39.420888032°N

Long: 108.059749403°W

UTM 13 NORTH

NAD 1983

NORTHING

14330524.201

EASTING

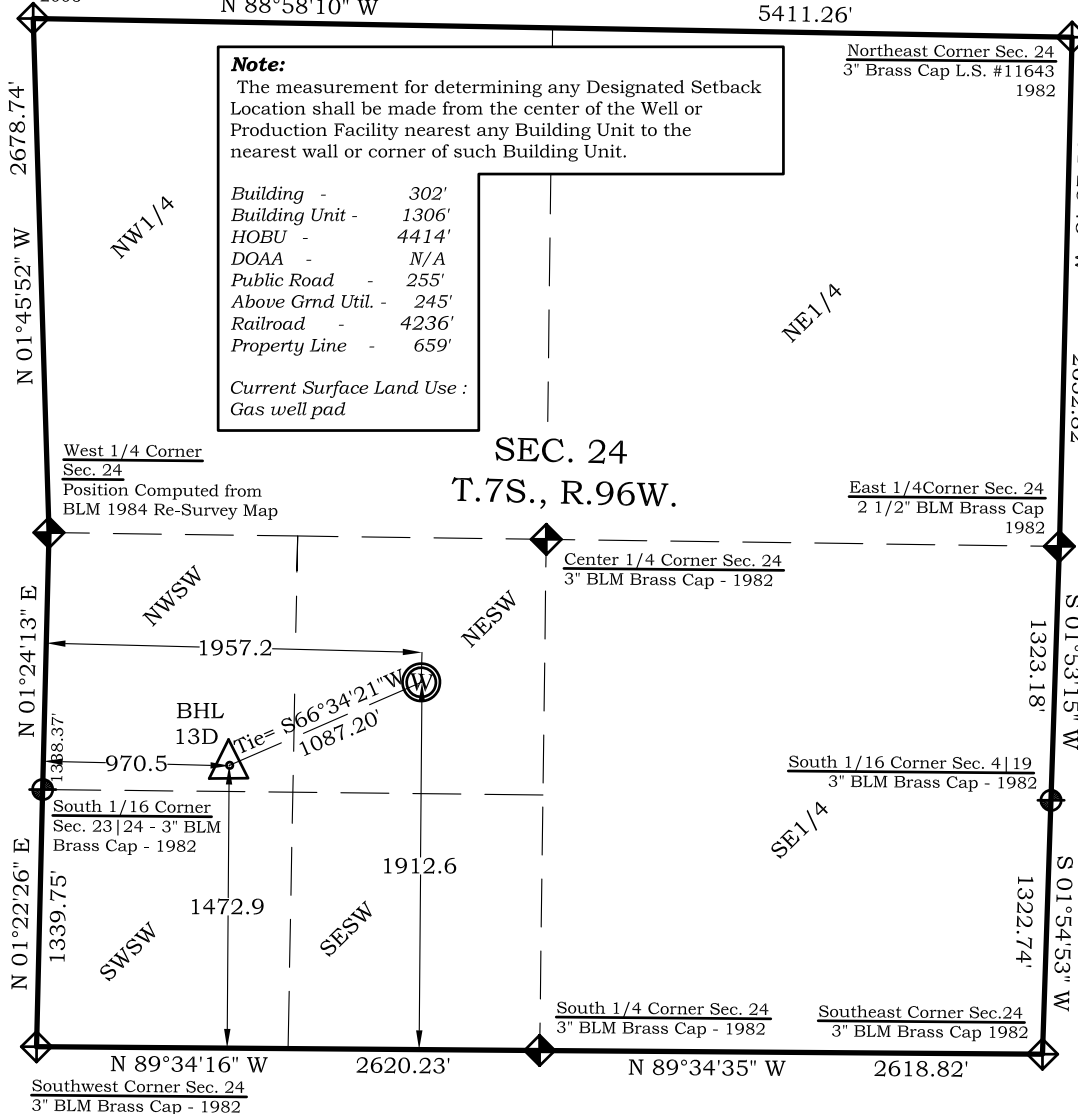
776077.518

Legend

- Field Surveyed Section Corner
- Field Surveyed Quarter Corner
- Calculated Section Corner Location
- Field Surveyed 1/6 Corner

Notes:

- LATITUDE AND LONGITUDE COORDINATES ARE DIFFERENTIALLY CORRECTED AND BASED ON PUBLISHED NGS CONTROL STATION "KOEPSSELL". SYSTEM: UTM ZONE: 13 NORTH DATUM: NAD 1983 (CONUS)
- ELEVATIONS ARE BASED ON NAVD OF 1983.
- ALL BOTTOM AND TOP HOLE LOCATIONS ARE MEASURED 90 DEGREES FROM SECTION LINE.
- USGS QUADRANGLE MAP "PARACHUTE".
- CURRENT SURFACE LAND USE: GAS PAD.
- PDOP AT THE TIME OF LOCATION OF SURFACE WELL = 2.4



Prepared For Ursa Operating Company, LLC
Proposed BAT 13D-24-07-96 Well Situate in The
NE1/4SW1/4 Section 24, Township 7 South, Range 96 West
of the 6 th. Principal Meridian, County of Garfield, State
of Colorado.

SURVEYOR'S CERTIFICATE

I, SCOTT E. AIBNER, A REGISTERED LAND SURVEYOR, LICENSED UNDER THE LAWS OF THE STATE OF COLORADO DO HEREBY CERTIFY THAT THE SURVEY SHOWN HEREON WAS PREPARED BY RIVER VALLEY SURVEY, INC., FOR URSA OPERATING COMPANY, LLC, R. ME OR UNDER MY DIRECT SUPERVISION AND THAT THIS PLAT IS A TRUE REPRESENTATION THEREOF.

BY:

SCOTT E. AIBNER, COLORADO REG. NO. 31143



River Valley Survey, Inc.
110 East 3rd. Street, Suite 213
Rifle, Colorado 81650
Ph: 970-379-7846

Project: Speakman A Pad

Field Date: 08-05-10

Date: 09-17-13

Scale: 1"= 1000'

Sheet: 1 of 1

Well Location Plat Prepared For:
Ursa Operating Co., LLC

Situate In:
SW1/4 Section 24, T7S., R. 96 W. of the
6th P.M., Garfield County, Colorado

