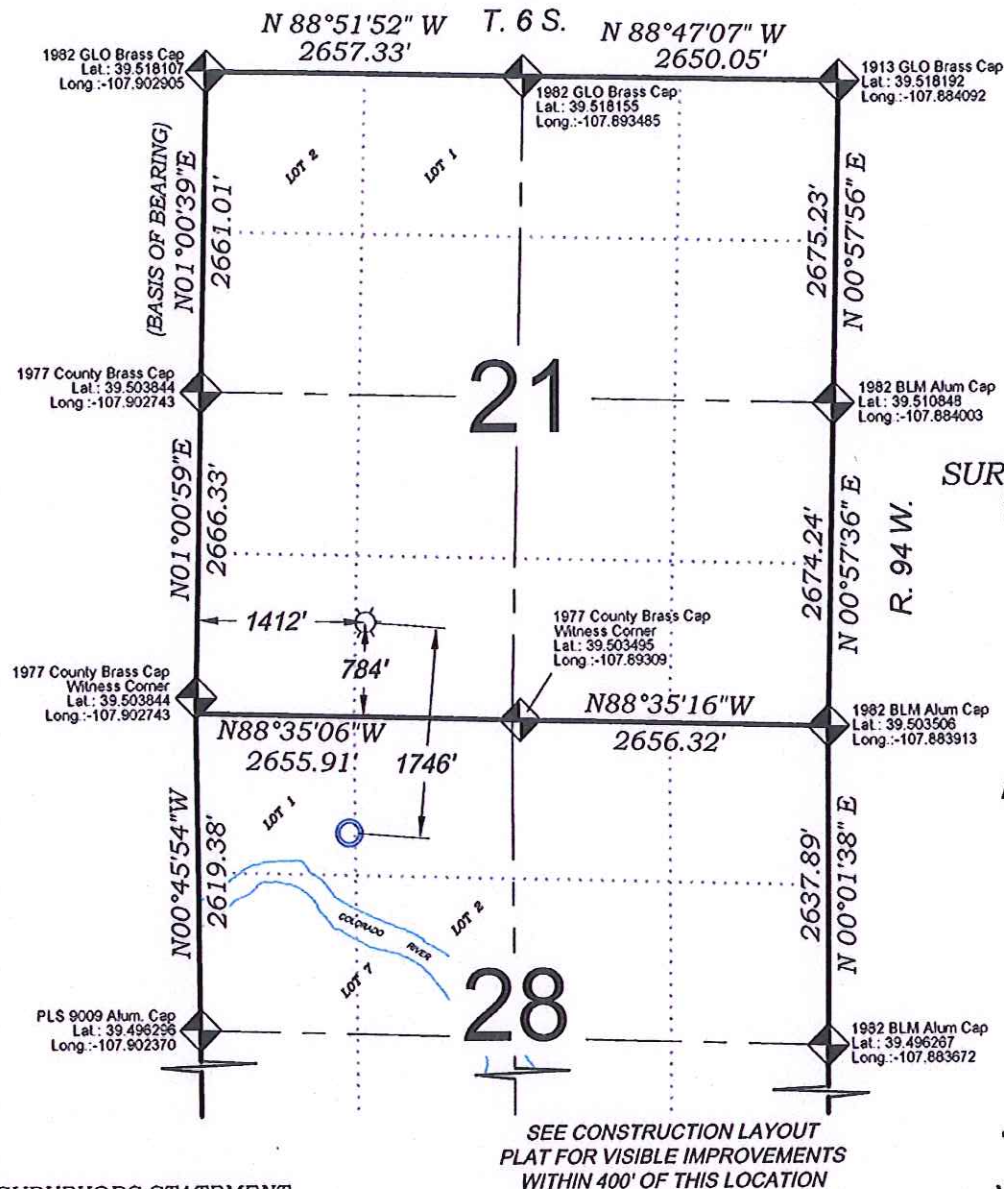


Clough RWF 911-28D



***SURFACE HOLE LOCATION***  
***784 FSL, 1412 FWL***  
 Lat.: 39.505642 °  
 Long.: -107.897759 °  
 N.: 1617986.6 (COSP)  
 E.: 2323522.4 (COSP)

**BOTTOM HOLE LOCATION**  
**959 FNL, 1275 FWL**  
 Lat.: 39.500854°  
 Long.: -107.898084°  
 N.: 1616245.8 (COSP)  
 E.: 2323384.9 (COSP)

PROPOSED PAD ELEV.: 5276.6  
EXISTING GROUND ELEV.: 5276.7

### SURVEYORS STATEMENT

**I, MICHAEL J. LANGHORNE, A REGISTERED LAND SURVEYOR IN THE STATE OF COLORADO DO HEREBY CERTIFY THAT THE SURVEY SHOWN HEREON WAS PREPARED UNDER MY DIRECT SUPERVISION AND HAS BEEN STAKED ON THE GROUND AS SHOWN ON THE PLAT AND CHECKING THAT THIS MAP IS A TRUE REPRESENTATION THEREOF.**

MICHAEL J. LANGHORNE, COLORADO REGISTRATION NO. 36572  
FOR AND ON BEHALF OF  
BOOKCLIFF SURVEY SERVICES, INC.

## REFERENCES

- 1) Dependent Resurvey and Survey of Tract 38, T. 6 S., R. 94 W., 6 th P.M (BLM PLAT)  
2) U.S.G.S. QUAD: ANVIL POINTS, CO

**136 East Third Street  
Rifle, Colorado  
81650 Ph. (970)  
625-2720 Fax (970)  
625-2773**

**BOOKCLIFF**  
*Survey Services, Inc.*

**SURVEY DATE:** 1/15/19  
**MAP DATE:** 8/15/13  
**SCALE:** 1" = 1500'  
**PLAT:** 1 of 1  
**PROJECT:** Valley

## NOTES

- 1) ELEVATIONS BASED ON N.A.V.D. 1988 PUBLISHED COORDINATES.
- 2) LATITUDES AND LONGITUDES ARE BASE ON NAD 83, PUBLISHED COORDINATES
- 3) STATE PLANE COORDINATES ARE BASED ON COLORADO CENTRAL ZONE, U.S. SURVEY FEET.
- 4) ELEVATION MASK SET TO 15°
- 5) GPS OPERATOR J. KIRKPATRICK, OBSERVED A PDOP 1.3 ON SURVEY POINT NUMBER 164.
- 6) SURFACE AND BOTTOM HOLE LOCATIONS ARE MEASURED 90° FROM SECTION LINES.

**WELL LOCATION PLAT Prepared for:**  
**WPXENERGY.** WPX Energy Rocky Mountain, LLC

SE1/4 SW1/4, SECTION 21  
T. 6 S., R. 94 W. of the 6th. P.M.  
GARFIELD COUNTY, COLORADO