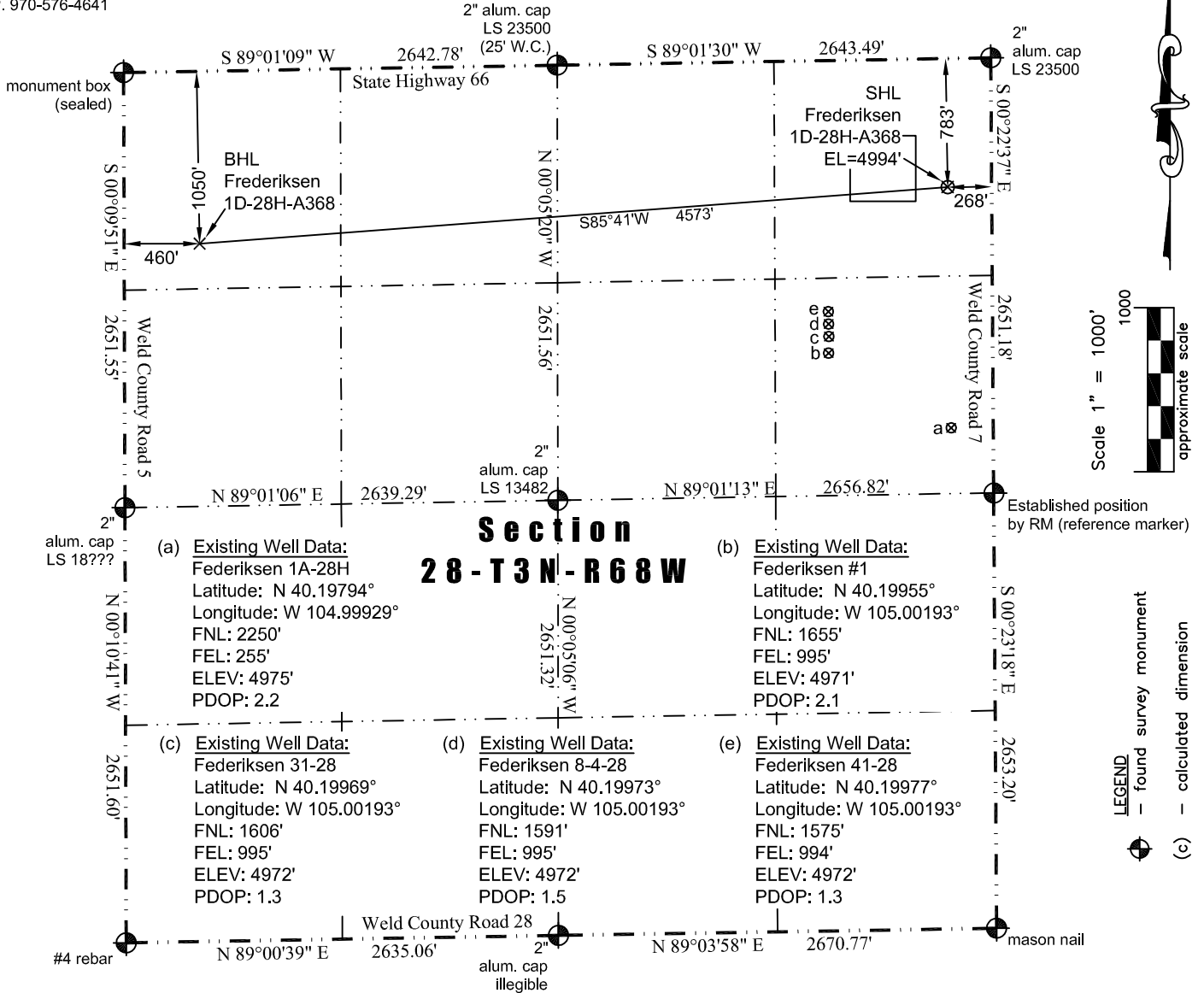


JR Land Surveying, LLC
 8114 Northstar Drive
 Windsor, Colorado 80528
 P. 970-576-4641

WELL LOCATION CERTIFICATE

THIS MAP DOES NOT REPRESENT A BOUNDARY SURVEY



Section 28-T3N-R68W

(a) Existing Well Data:
 Federiksen 1A-28H
 Latitude: N 40.19794°
 Longitude: W 104.99929°
 FNL: 2250'
 FEL: 255'
 ELEV: 4975'
 PDOP: 2.2

(b) Existing Well Data:
 Federiksen #1
 Latitude: N 40.19955°
 Longitude: W 105.00193°
 FNL: 1655'
 FEL: 995'
 ELEV: 4971'
 PDOP: 2.1

(c) Existing Well Data:
 Federiksen 31-28
 Latitude: N 40.19969°
 Longitude: W 105.00193°
 FNL: 1606'
 FEL: 995'
 ELEV: 4972'
 PDOP: 1.3

(d) Existing Well Data:
 Federiksen 8-4-28
 Latitude: N 40.19973°
 Longitude: W 105.00193°
 FNL: 1591'
 FEL: 995'
 ELEV: 4972'
 PDOP: 1.5

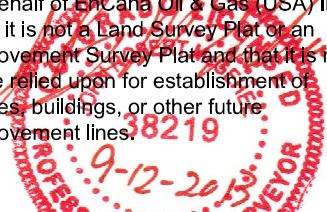
(e) Existing Well Data:
 Federiksen 41-28
 Latitude: N 40.19977°
 Longitude: W 105.00193°
 FNL: 1575'
 FEL: 994'
 ELEV: 4972'
 PDOP: 1.3

In accordance with a request from Jay Knutson of EnCana Oil & Gas (USA) Inc., JR Land Surveying, LLC has determined the location of the **Frederiksen 1D-28H-A368** well site to be SHL: 783' FNL and 268' FEL, (BHL: 1050' FNL and 460' FWL), as measured at ninety (90) degrees from the section lines of Section 28, Township 3 North, Range 68 West of the 6th Principal Meridian, Weld County Colorado.

Proposed Surface Hole Data:
 Latitude: N 40.20197° (BHL: 40.20109°)
 Longitude: W 104.99934° (BHL: 105.01567°)
 PDOP: 1.9

Nearest:
 Building: 430' southeast Above Ground Utility: 295' east
 Public Road: 250' east Railroad: 3,031' northwest
 Property Line: 207' north Well Window: SHL is 195' outside
 Existing Well: Frederiksen 41-28; 1,080' southwest

I hereby certify that this Well Location Certificate was prepared by me or under my direct supervision on 9/12/2013 for and on behalf of EnCana Oil & Gas (USA) Inc. That it is not a Land Survey Plat or an Improvement Survey Plat and that it is not to be relied upon for establishment of fences, buildings, or other future improvement lines.



John Robert McGehee LS#38219
 Well: Frederiksen 1D-28H-A368 WLC

- Notes:
- 1) Bearings and distances based on NAD 83 Colorado North State Plane Coordinate. using RTK GPS observations taken 9/5/13 by operator John Rice.
 - 2) Conversion factor to ground (1.000279243).
 - 3) Elevations based on NAVD 88 GPS heights and Geoid 2003 corrections.
 - 4) See Location Drawing for visible improvements within 500 feet of Pad Site.
 - 5) The surface use is a platted subdivision.

NOTICE: According to Colorado law you must commence any legal action based upon any defect in this W.L.C. within three years after you first discover such defect. In no event may any action based upon any defect in this W.L.C. be commenced more than ten years from this said date of the certification shown hereon.