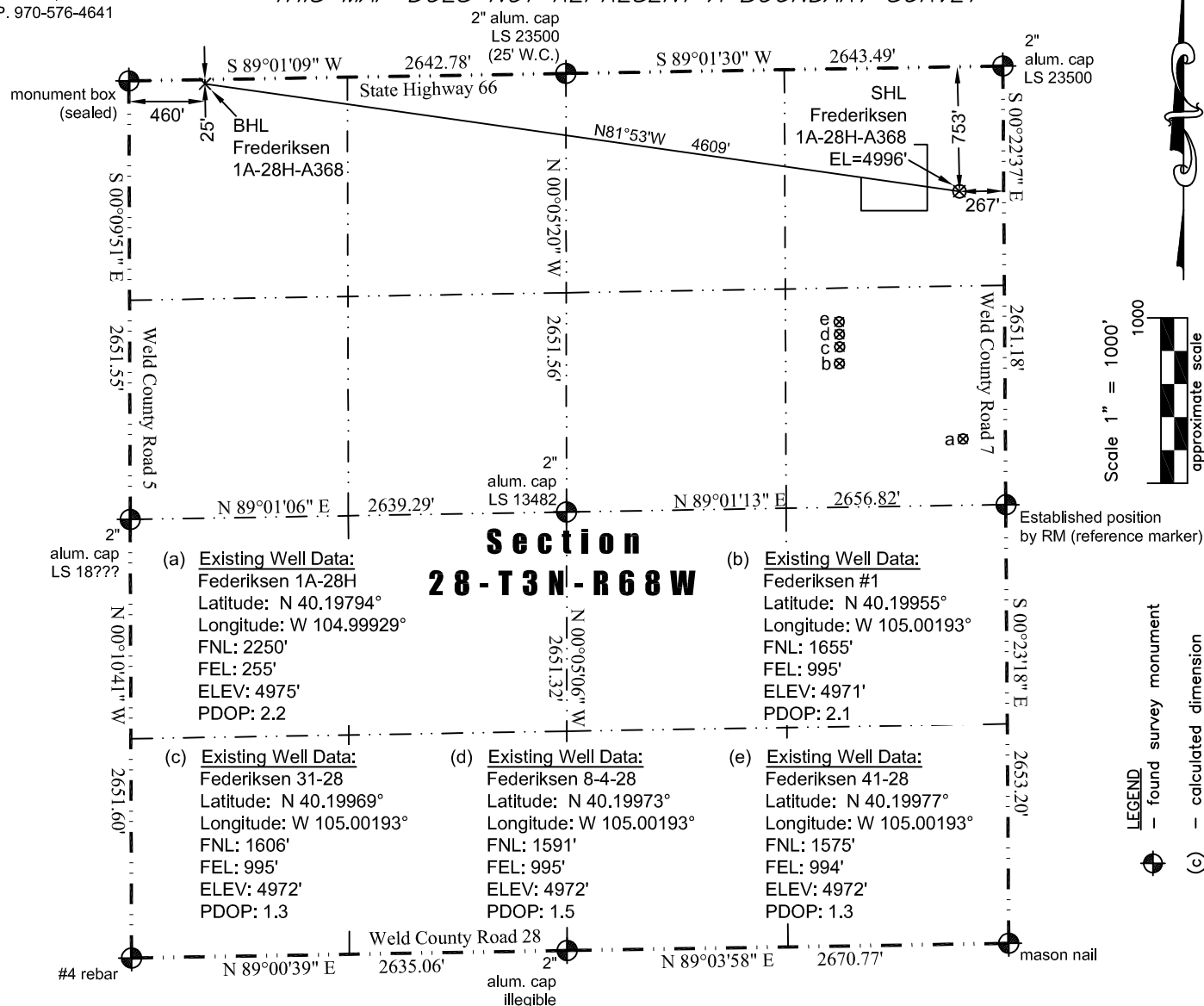


8114 Northstar Drive
Windsor, Colorado 80528
P. 970-576-4641

THIS MAP DOES NOT REPRESENT A BOUNDARY SURVEY



Latitude: N 40.20205° (BHL: 40.20391°)
Longitude: W 104.99933° (BHL: 105.01566°)
PDOP: 1.9

Building: 440' southeast Above Ground Utility: 295' east
Public Road: 250' east Railroad: 3,025' northwest
Property Line: 177' north Well Window: SHL is 195' outside
Existing Well: Frederiksen 41-28; 1,103' southwest

- 1) Bearings and distances based on NAD 83 Colorado North State Plane Coordinate, using RTK GPS observations taken 9/5/13 by operator John Rice.
- 2) Conversion factor to ground (1.000279243).
- 3) Elevations based on NAVD 88 GPS heights and Geoid 2003 corrections.
- 4) See Location Drawing for visible improvements within 500 feet of Pad Site.
- 5) The surface use is a platted subdivision.

NOTICE: According to Colorado law you must commence any legal action based upon any defect in this W.L.C. within three years after you first discover such defect. In no event may any action based upon any defect in this W.L.C. be commenced more than ten years from this said date of the certification shown hereon.

I hereby certify that this Well Location Certificate was prepared by me or under my direct supervision on 9/12/2013 for and on behalf of EnCana Oil & Gas (USA) Inc. That it is not a Land Survey Plat or an Improvement Survey Plat and that it is not to be relied upon for establishment of fences, buildings, or other future improvement lines.

John Robert McGehee LS#38219
Well: Frederiksen 1A-28H-A368 WLC