

T7N, R91W, 6th. P.M.

AXIA ENERGY

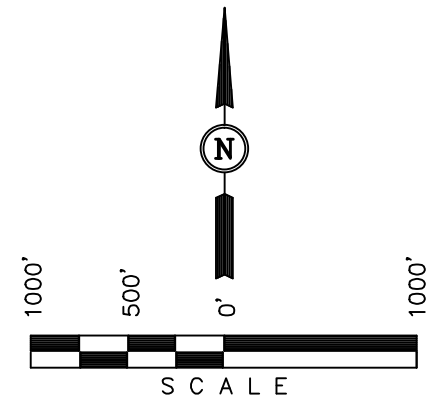
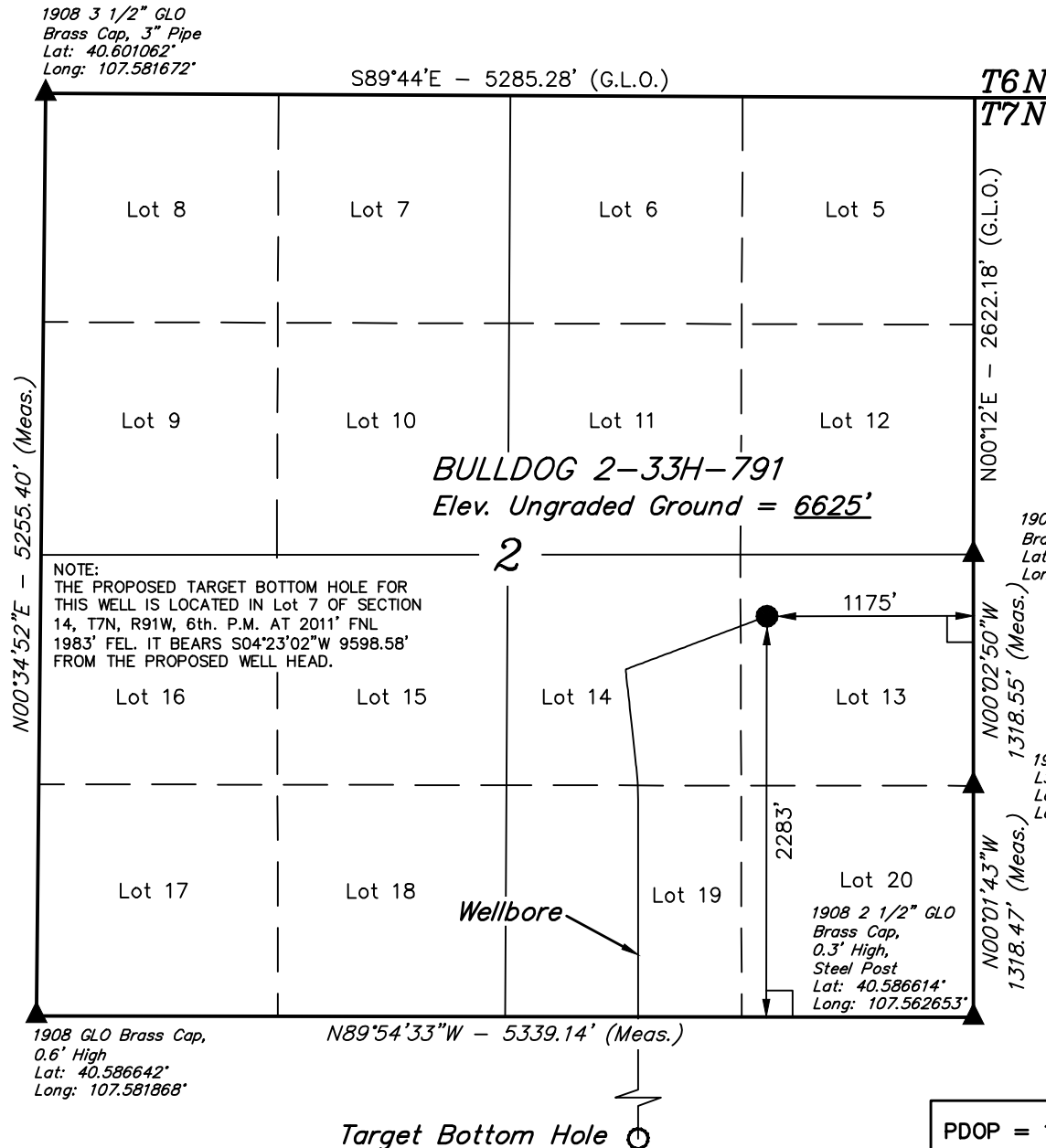
Well location, BULLDOG #2-33H-791 (Surface Location), located as shown in Lot 13 of Section 2, T7N, R91W, 6th. P.M., Moffat County, Colorado.

BASIS OF ELEVATION

SPOT ELEVATION LOCATED AT THE SOUTHWEST CORNER OF SECTION 15, T7N, R91W, 6th P.M. TAKEN FROM THE CRAIG QUADRANGLE, COLORADO, MOFFAT COUNTY, 7.5 MINUTE QUAD (TOPOGRAPHIC MAP) PUBLISHED BY THE UNITED STATES DEPARTMENT OF THE INTERIOR, GEOLOGICAL SURVEY. SAID ELEVATION IS MARKED AS BEING 6672 FEET.

BASIS OF BEARINGS

BASIS OF BEARINGS IS A G.P.S. OBSERVATION.



CERTIFICATE

THIS IS TO CERTIFY THAT THE ABOVE MAP WAS PREPARED FROM FIELD NOTES OF ACTUAL SURVEYS MADE BY ME OR UNDER MY SUPERVISION AND THAT THE SAME ARE TRUE AND CORRECT TO THE BEST OF MY KNOWLEDGE AND BELIEF.

REGISTERED LAND SURVEYOR
REGISTRATION NO. 17492
STATE OF COLORADO

REVISED: 07-26-13 T.B.

UINTAH ENGINEERING & LAND SURVEYING
85 SOUTH 200 EAST - VERNAL, UTAH 84078
(435) 789-1017

LEGEND:

- └─┘ = 90° SYMBOL
- = PROPOSED WELL HEAD.
- ▲ = SECTION CORNERS LOCATED.

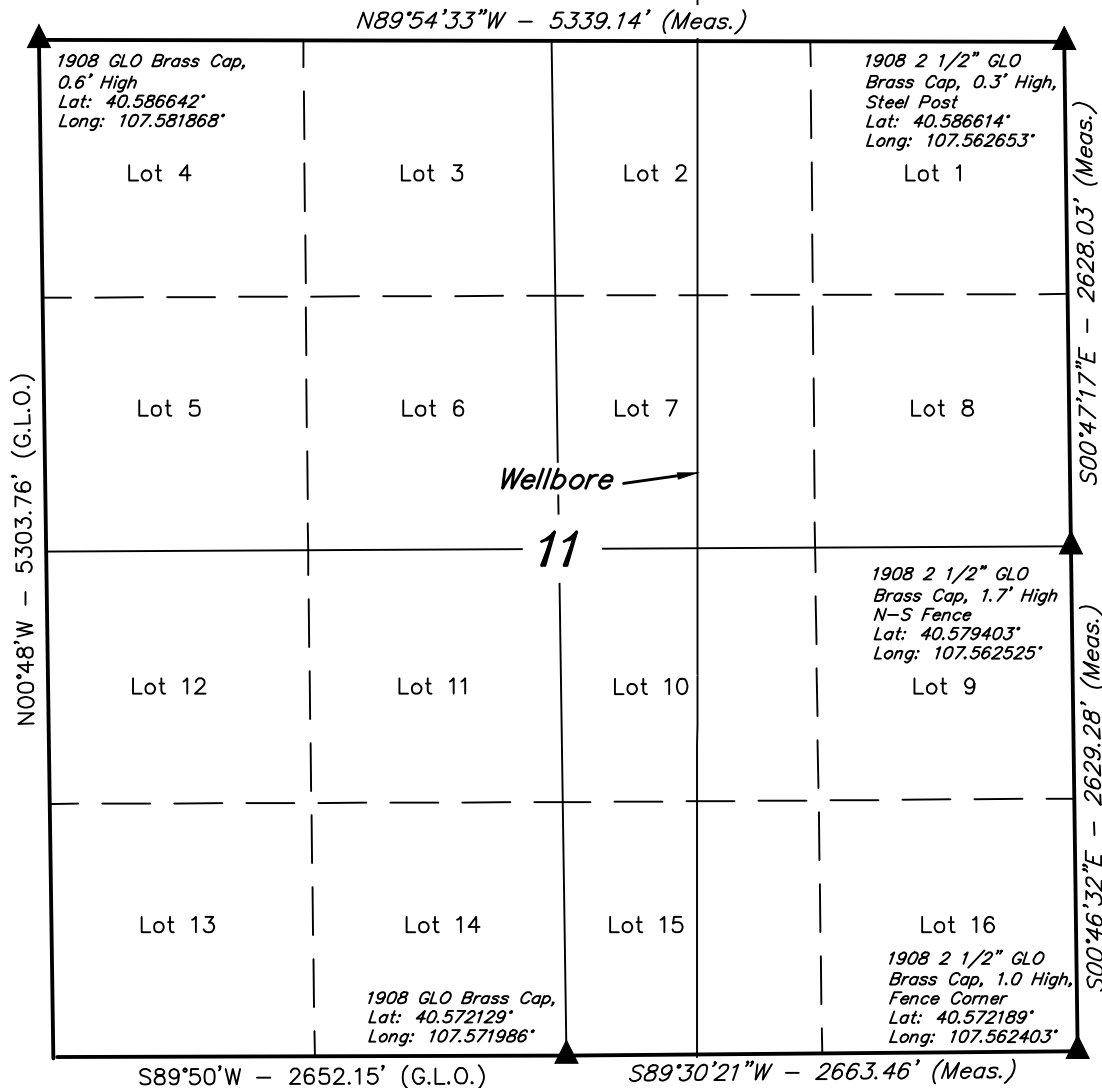
NAD 83 (SURFACE LOCATION)	
LATITUDE	= 40°35'34.39" (40.592886)
LONGITUDE	= 107°34'00.78" (107.566884)
NAD 27 (SURFACE LOCATION)	
LATITUDE	= 40°35'34.50" (40.592916)
LONGITUDE	= 107°33'58.55" (107.566263)
STATE PLANE NAD 83	
N: 1465519.30	E: 2426041.12
STATE PLANE NAD 27	
N: 465518.07	E: 1426198.74

SCALE 1" = 1000'	DATE SURVEYED: 1-17-13	DATE DRAWN: 01-18-13
PARTY G.M. M.A. J.G.G.	REFERENCES G.L.O. PLAT	
WEATHER COLD	FILE	AXIA ENERGY

T7N, R91W, 6th. P.M.

NOTE:
THE PROPOSED TARGET BOTTOM HOLE
BEARS S04°23'02"W 9598.58' FROM THE
PROPOSED WELL HEAD WHICH IS LOCATED IN
Lot 13 OF SECTION 2, T7N, R91W, 6th. P.M.
AT 2283' FSL 1175' FEL.

BULLDOG #2-33H-791
(Surface Location)



LEGEND:

- └─┘ = 90° SYMBOL
- = PROPOSED WELL HEAD.
- ▲ = SECTION CORNERS LOCATED.

NOTE:
THE PROPOSED TARGET BOTTOM HOLE FOR
THIS WELL IS LOCATED IN Lot 7 OF SECTION
14, T7N, R91W, 6th. P.M. AT 2011' FNL
1983' FEL. IT BEARS S04°23'02"W 9598.58'
FROM THE PROPOSED WELL HEAD.

○ Target Bottom Hole

AXIA ENERGY

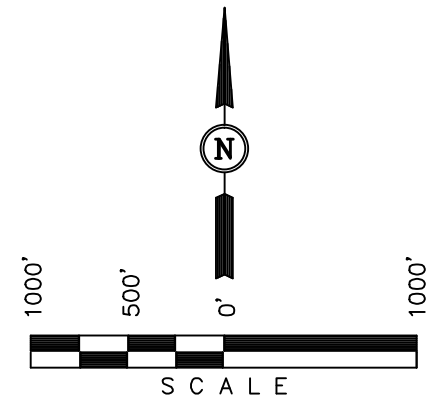
Well location, BULLDOG #2-33H-791 (Wellbore),
located as shown in Section 11, T7N, R91W, 6th.
P.M., Moffat County, Colorado.

BASIS OF ELEVATION

SPOT ELEVATION LOCATED AT THE SOUTHWEST CORNER OF
SECTION 15, T7N, R91W, 6th P.M. TAKEN FROM THE CRAIG
QUADRANGLE, COLORADO, MOFFAT COUNTY, 7.5 MINUTE QUAD
(TOPOGRAPHIC MAP) PUBLISHED BY THE UNITED STATES
DEPARTMENT OF THE INTERIOR, GEOLOGICAL SURVEY. SAID
ELEVATION IS MARKED AS BEING 6672 FEET.

BASIS OF BEARINGS

BASIS OF BEARINGS IS A G.P.S. OBSERVATION.



CERTIFICATE

THIS IS TO CERTIFY THAT THE ABOVE PLAT WAS PREPARED FROM
FIELD NOTES OF ACTUAL SURVEYS MADE BY ME OR UNDER MY
SUPERVISION AND THAT THE SAME ARE TRUE AND CORRECT TO THE
BEST OF MY KNOWLEDGE AND BELIEF.

REGISTERED LAND SURVEYOR
REGISTRATION NO. 17492
STATE OF COLORADO
07-29-13

UINTAH ENGINEERING & LAND SURVEYING
85 SOUTH 200 EAST - VERNAL, UTAH 84078
(435) 789-1017

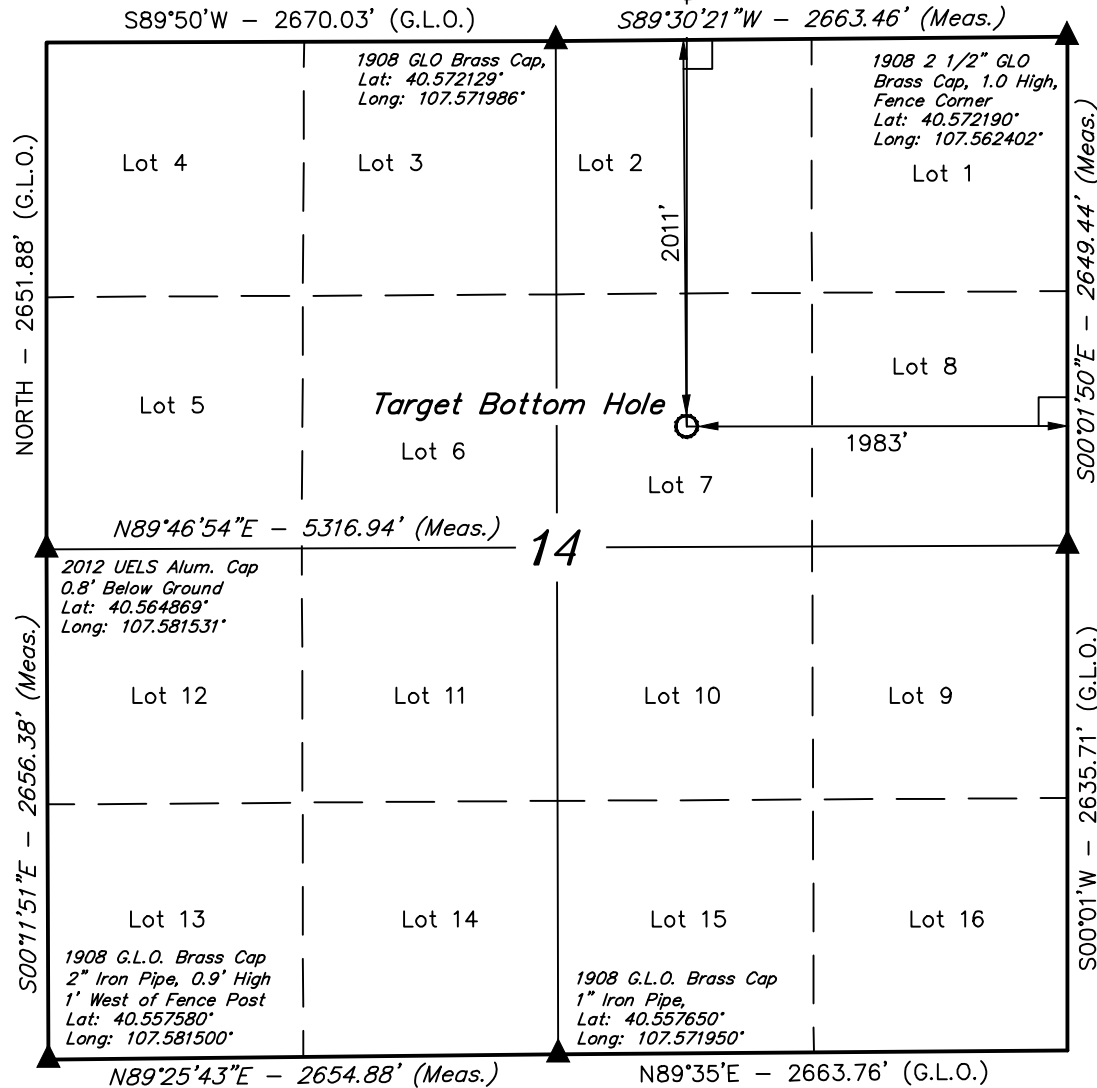
SCALE 1" = 1000'	DATE SURVEYED: 1-17-13	DATE DRAWN: 07-26-13
PARTY G.M. M.A. T.B.	REFERENCES G.L.O. PLAT	
WEATHER COLD	FILE AXIA ENERGY	

T7N, R91W, 6th. P.M.

NOTE:
THE PROPOSED TARGET BOTTOM HOLE
BEARS S04°23'02"W 9598.58' FROM THE
PROPOSED WELL HEAD WHICH IS LOCATED IN
Lot 13 OF SECTION 2, T7N, R91W, 6th. P.M.
AT 2283' FSL 1175' FEL.

BULLDOG #2-33H-791
(Surface Location)

Wellbore



AXIA ENERGY

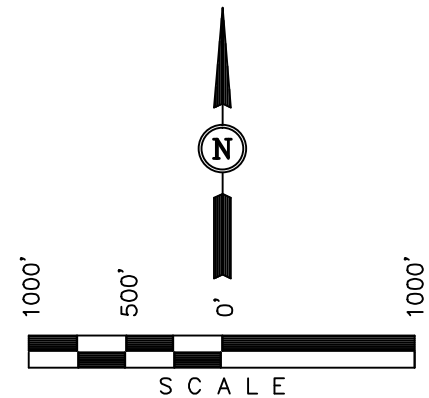
Well location, BULLDOG #2-33H-791 (Target Bottom Hole), located as shown in Lot 7 of Section 14, T7N, R91W, 6th. P.M., Moffat County, Colorado.

BASIS OF ELEVATION

SPOT ELEVATION LOCATED AT THE SOUTHWEST CORNER OF SECTION 15, T7N, R91W, 6th P.M. TAKEN FROM THE CRAIG QUADRANGLE, COLORADO, MOFFAT COUNTY, 7.5 MINUTE QUAD (TOPOGRAPHIC MAP) PUBLISHED BY THE UNITED STATES DEPARTMENT OF THE INTERIOR, GEOLOGICAL SURVEY. SAID ELEVATION IS MARKED AS BEING 6672 FEET.

BASIS OF BEARINGS

BASIS OF BEARINGS IS A G.P.S. OBSERVATION.



CERTIFICATE

THIS IS TO CERTIFY THAT THE ABOVE PLAT WAS PREPARED FROM FIELD NOTES OF ACTUAL SURVEYS MADE BY ME OR UNDER MY SUPERVISION AND THAT THE SAME ARE TRUE AND CORRECT TO THE BEST OF MY KNOWLEDGE AND BELIEF.

REGISTERED LAND SURVEYOR
REGISTRATION NO. 17492
STATE OF COLORADO

REVISED: 07-26-13 T.B.

UINTAH ENGINEERING & LAND SURVEYING
85 SOUTH 200 EAST - VERNAL, UTAH 84078
(435) 789-1017

LEGEND:

- └─┘ = 90° SYMBOL
- = PROPOSED WELL HEAD.
- ▲ = SECTION CORNERS LOCATED.

NAD 83 (TARGET BOTTOM HOLE)
LATITUDE = 40°33'59.85" (40.566625)
LONGITUDE = 107°34'10.34" (107.569539)
NAD 27 (TARGET BOTTOM HOLE)
LATITUDE = 40°33'59.96" (40.566656)
LONGITUDE = 107°34'08.10" (107.568917)
STATE PLANE NAD 83
N: 1455972.13 E: 2425081.22
STATE PLANE NAD 27
N: 455970.96 E: 1425238.86

SCALE 1" = 1000'	DATE SURVEYED: 1-17-13	DATE DRAWN: 01-18-13
PARTY G.M. M.A. J.G.G.	REFERENCES G.L.O. PLAT	
WEATHER COLD	FILE AXIA ENERGY	