



Plan Data for FARLEY 29C-23HZ

Field: WATTENBERG_ANADARKO_NAD 83

Map Unit: USFT

Projected Coordinate System: NAD83 / Colorado North (ftUS)

Slot: FARLEY 29C-23HZ

Position:
Offset is from Site centre

+N/-S: 19.30USft Northing: 1318399.88USft
+E/-W: 22.62USft Easting: 3209001.30USft
Elevation Above VRD: 4939.00USft

Latitude: 40.204984°
Longitude: -104.751718°

Plan Point Information:

| DogLeg | Severity | Unit: | °/100.00ft | MD | Inc | Az | TVD | +N/-S | +E/-W | VSec | DLS | Toolface |
|----------|----------|--------|------------|---------|--------|---------|--------|--------|--------|--------|--------|----------|
| (USft) | (°) | (°) | (USft) | (USft) | (USft) | (USft) | (USft) | (USft) | (USft) | (USft) | (DLSU) | (°) |
| 953.00 | 1.10 | 9.30 | 952.94 | 7.47 | -1.51 | 7.47 | 0.41 | 157.8R | 0.0R | 0.0R | 0.0R | 0.0R |
| 1200.00 | 1.10 | 9.30 | 1199.89 | 12.15 | -0.74 | 12.15 | 0.00 | 0.0R | 0.0R | 0.0R | 0.0R | 0.0R |
| 2038.65 | 16.00 | 142.88 | 2028.15 | -72.65 | 70.81 | -72.72 | 2.00 | 136.2R | 0.0R | 0.0R | 0.0R | 0.0R |
| 3603.68 | 16.00 | 142.88 | 3532.58 | -416.54 | 331.08 | -416.89 | 0.00 | 0.0R | 0.0R | 0.0R | 0.0R | 0.0R |
| 4403.49 | 0.00 | 0.00 | 4322.04 | -504.99 | 398.02 | -505.41 | 2.00 | 180.0R | 0.0R | 0.0R | 0.0R | 0.0R |
| 6897.49 | 0.00 | 0.00 | 6816.04 | -504.99 | 398.02 | -505.41 | 0.00 | 0.0R | 0.0R | 0.0R | 0.0R | 0.0R |
| 7797.49 | 90.00 | 359.94 | 7389.00 | 67.97 | 397.42 | 67.55 | 10.00 | 0.1L | 0.0R | 0.0R | 0.0R | 0.0R |
| 11616.20 | 90.00 | 359.94 | 7389.00 | 3886.68 | 393.42 | 3886.26 | 0.00 | 0.0R | 0.0R | 0.0R | 0.0R | 0.0R |

Plan Data for FARLEY 29C-23HZ

Formation Point Information:

| Name | TVD | Elevation | (USft) | (USft) |
|----------------|---------|-----------|--------|--------|
| FOX HILLS | 770.00 | 4185.00 | | |
| PARKMAN | 3930.00 | 1025.00 | | |
| SUSSEX | 4449.00 | 506.00 | | |
| SHARON SPRINGS | 7043.00 | -2088.00 | | |
| NIOBRARA A | 7104.00 | -2149.00 | | |
| NIOBRARA B | 7152.00 | -2197.00 | | |
| NIOBRARA C | 7235.00 | -2280.00 | | |
| FORT HAYS | 7365.00 | -2410.00 | | |
| CODELL | 7389.00 | -2434.00 | | |

Plan Data for FARLEY 29C-23HZ

Casing Point Information:

| Name | MD | TVD | (USft) | (USft) |
|----------|---------|---------|--------|--------|
| 9 5/8 in | 1031.00 | 1030.92 | | |
| 7 in | 7797.49 | 7389.00 | | |

LINER TOP- 6797.49' MD

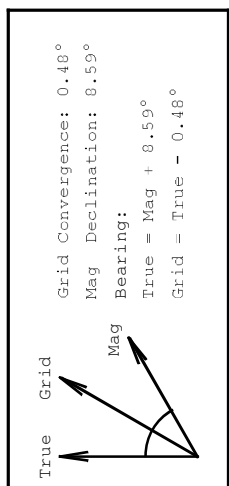
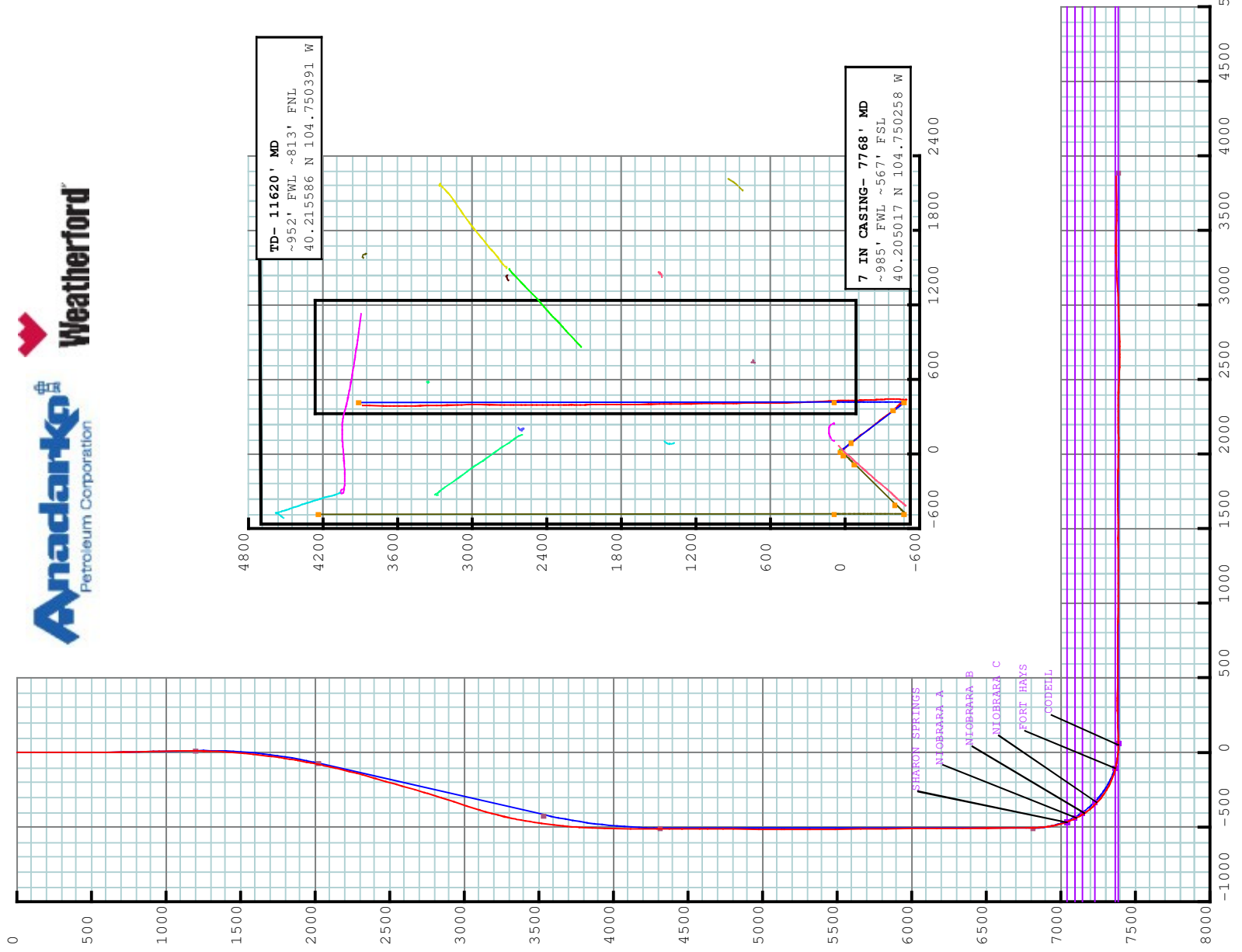
KOP- 6897.49' MD

Plan Data for FARLEY 29C-23HZ

Target Set Information:

Name: 2

| Name | TVD | Lat | Long | Shape |
|--------------|-----------|-------------|--------|-------|
| (USft) | (°) | (°) | | |
| PBHL 7389.00 | 40.216554 | -104.750311 | Cuboid | |





5D Survey Report

Anadarko Petroleum

Field Name: WATTENBERG_ANADARKO_NAD 83
Site Name: FARLEY 13-23HZ
Well Name: FARLEY 29C-23HZ
Survey: Definitive Survey



Weatherford International Limited

5D Survey Report

| | | |
|-------------------|-----------------|------------------------------|
| Target Set | Name : 2 | Number of Targets : 1 |
|-------------------|-----------------|------------------------------|

| |
|------------------|
| Comment : |
|------------------|

| | | |
|--|--|------------------------------------|
| TargetName: PBHL Shape: Cuboid | Position (Relative to centre) | |
| | + N / -S : 4214.77US ft | Northing : 1322617.82 US ft |
| | + E / -W : 392.92 US ft | Eastng : 3209358.65US ft |
| | TVD (Drill Floor) : 7389.00 US ft | |
| | Orientation | Inclination : 0.00° |
| | Dimensions | Breadth : 1.00 US ft |
| | | Height : 1.00 US ft |

| | | |
|--|----------------------|------------------|
| Survey Name : Definitive Survey | Survey Tool : | Company : |
|--|----------------------|------------------|

| | | |
|---------------------------|------------------|--------------------|
| Date : 01/Jul/2013 | Comment : | Dip: 66.81° |
|---------------------------|------------------|--------------------|

| | | | |
|-----------------------|--------------------------|-----------------------------------|---------------------------|
| Magnetic Model | Date: 13/Jul/2013 | Field Strength: 52782.9 nT | Declination: 8.59° |
|-----------------------|--------------------------|-----------------------------------|---------------------------|

| Survey Tool Ranges | Name | Start MD (us ft) | End MD (us ft) | Source Survey |
|--------------------|------|------------------|----------------|---------------|
|--------------------|------|------------------|----------------|---------------|

| | | | | |
|----------------|------|--------|----------|---------------|
| NSG Static GMS | 0.00 | 953.00 | 11620.00 | SURFACE GYROS |
| MWD | | | | WFT MWD |

| Casing Points (Relative to centre, TVD relative to Drill Floor) | MD (US ft) | Inc (°) | Az (°) | TVD (US ft) | N.Offset (US ft) | E.Offset (US ft) | Latitude (°) | Longitude (°) | VS (US ft) | Comment |
|--|------------|---------|--------|-------------|------------------|------------------|--------------|---------------|------------|---------|
| 7 in | 7768.00 | 86.30 | 357.89 | 7383.76 | 11.91 | 407.85 | 40.205017 | -104.750258 | | |

Well path created using minimum curvature

| Survey Points (Relative to centre, TVD relative to Drill Floor) | MD (US ft) | Inc (°) | Az (°) | TVD (US ft) | N.Offset (US ft) | E.Offset (US ft) | Latitude (°) | Longitude (°) | VS (US ft) | Comment |
|--|------------|---------|--------|-------------|------------------|------------------|--------------|---------------|------------|---------|
| 0.00 | 0.00 | 0.00 | 0.00 | 0.00 | 0.00 | 0.00 | 40.204984 | -104.751718 | 0.00 | |
| 16.00 | 0.00 | 0.00 | 0.00 | 16.00 | 0.00 | 0.00 | 40.204984 | -104.751718 | 0.00 | |
| 116.00 | 0.07 | 214.25 | 268.18 | 116.00 | -0.05 | -0.03 | 40.204984 | -104.751718 | -0.05 | |
| 216.00 | 0.16 | 268.18 | 293.66 | 216.00 | -0.11 | -0.21 | 40.204984 | -104.751719 | -0.11 | |
| 316.00 | 0.32 | 293.66 | 342.52 | 316.00 | 0.00 | -0.60 | 40.204988 | -104.751720 | 0.00 | |
| 416.00 | 0.15 | 342.52 | 338.99 | 416.00 | 0.24 | -0.90 | 40.204985 | -104.751721 | 0.24 | |
| 516.00 | 0.41 | 338.99 | 342.43 | 516.00 | 0.70 | -1.07 | 40.204986 | -104.751722 | 0.70 | |
| 616.00 | 0.62 | 342.43 | | 615.99 | 1.55 | -1.36 | 40.204988 | -104.751723 | 1.55 | |

Weatherford International Limited

5D 7.5.4 : 20 August 2013, 20:48:33 UTC

5D Survey Report

| Survey Points (Relative to centre, TVD relative to Drill Floor) | | | | | | | | | | | Comment |
|--|------------|-----------|----------------|----------------------|----------------------|---------------------|--------------------|-----------------|------------------|---------------|-----------------------------|
| VD (US ft) | Inc (°) | Az (°) | TVD (US ft) | N. Offset (US ft) | E. Offset (US ft) | Northing (US ft) | Easting (US ft) | Latitude (°) | Longitude (°) | VS (US ft) | |
| 716.00 | 0.97 | 353.83 | 715.98 | 2.91 | -1.61 | 1318402.77 | 3208999.66 | 40.204992 | -104.751724 | 2.91 | TIE ON FIRST MWD SVY |
| 816.00 | 1.09 | 359.25 | 815.97 | 4.70 | -1.72 | 1318404.56 | 3208999.54 | 40.204997 | -104.751724 | 4.70 | |
| 916.00 | 1.24 | 6.29 | 915.95 | 6.72 | -1.61 | 1318406.59 | 3208999.63 | 40.205002 | -104.751724 | 6.73 | |
| 953.00 | 1.10 | 9.30 | 952.94 | 7.47 | -1.51 | 1318407.34 | 3208999.73 | 40.205005 | -104.751723 | 7.47 | |
| 1072.00 | 1.53 | 39.03 | 1071.91 | 9.83 | -0.32 | 1318409.71 | 3209000.89 | 40.205011 | -104.751719 | 9.83 | |
| 1163.00 | 0.21 | 209.94 | 1162.90 | 10.63 | 0.36 | 1318410.52 | 3209001.57 | 40.205013 | -104.751717 | 10.63 | |
| 1253.00 | 1.68 | 142.97 | 1252.88 | 9.44 | 1.07 | 1318409.33 | 3209002.29 | 40.205010 | -104.751714 | 9.44 | |
| 1343.00 | 3.68 | 129.52 | 1342.78 | 6.55 | 4.09 | 1318406.46 | 3209005.34 | 40.205002 | -104.751703 | 6.54 | |
| 1435.00 | 5.99 | 135.34 | 1434.45 | 1.25 | 9.75 | 1318401.21 | 3209011.04 | 40.204987 | -104.751683 | 1.24 | |
| 1527.00 | 6.67 | 142.21 | 1525.89 | -6.39 | 16.39 | 1318393.63 | 3209017.75 | 40.204966 | -104.751659 | -6.40 | |
| 1617.00 | 8.17 | 142.86 | 1615.13 | -15.61 | 23.46 | 1318384.46 | 3209024.89 | 40.204941 | -104.751634 | -15.64 | |
| 1707.00 | 9.28 | 140.63 | 1704.09 | -26.32 | 31.92 | 1318373.83 | 3209033.44 | 40.204912 | -104.751604 | -26.36 | |
| 1798.00 | 10.96 | 138.23 | 1793.67 | -38.45 | 42.34 | 1318361.79 | 3209043.96 | 40.204878 | -104.751566 | -38.49 | |
| 1888.00 | 13.20 | 142.90 | 1881.68 | -53.03 | 54.24 | 1318347.31 | 3209055.99 | 40.204838 | -104.751524 | -53.08 | |
| 1979.00 | 14.33 | 138.99 | 1970.06 | -69.81 | 57.90 | 1318330.64 | 3209069.78 | 40.204792 | -104.751475 | -69.88 | |
| 2069.00 | 14.75 | 142.82 | 2057.18 | -87.35 | 82.13 | 1318313.23 | 3209084.16 | 40.204744 | -104.751424 | -87.43 | |
| 2159.00 | 16.87 | 141.18 | 2143.77 | -106.65 | 97.24 | 1318294.05 | 3209099.44 | 40.204691 | -104.751370 | -106.75 | |
| 2250.00 | 17.50 | 139.58 | 2230.71 | -127.35 | 114.39 | 1318273.50 | 3209116.76 | 40.204634 | -104.751308 | -127.47 | |
| 2341.00 | 18.85 | 143.11 | 2317.17 | -149.53 | 132.09 | 1318251.47 | 3209134.65 | 40.204574 | -104.751245 | -149.67 | |
| 2436.00 | 18.86 | 146.72 | 2407.08 | -174.64 | 149.73 | 1318226.51 | 3209152.50 | 40.204505 | -104.751182 | -174.80 | |
| 2621.00 | 20.26 | 140.23 | 2581.42 | -224.27 | 186.63 | 1318177.20 | 3209189.82 | 40.204368 | -104.751050 | -224.46 | |
| 2715.00 | 19.98 | 140.88 | 2669.68 | -249.24 | 207.18 | 1318152.40 | 3209210.57 | 40.204300 | -104.750976 | -249.45 | |
| 2808.00 | 21.30 | 142.08 | 2756.71 | -274.89 | 227.58 | 1318126.92 | 3209231.19 | 40.204229 | -104.750903 | -275.13 | |
| 2900.00 | 21.74 | 143.63 | 2842.30 | -301.79 | 247.96 | 1318100.19 | 3209251.79 | 40.204156 | -104.750830 | -302.05 | |
| 2993.00 | 22.22 | 143.36 | 2928.54 | -329.77 | 268.66 | 1318072.39 | 3209272.74 | 40.204079 | -104.750756 | -330.05 | |
| 3087.00 | 22.00 | 141.96 | 3015.62 | -357.90 | 290.12 | 1318044.44 | 3209294.43 | 40.204002 | -104.750679 | -358.20 | |
| 3180.00 | 21.59 | 140.85 | 3101.98 | -384.89 | 311.66 | 1318017.64 | 3209316.19 | 40.203927 | -104.750602 | -385.21 | |
| 3357.00 | 17.76 | 137.41 | 3268.62 | -430.03 | 350.50 | 1317972.82 | 3209355.42 | 40.203803 | -104.750463 | -430.40 | |
| 3442.00 | 14.55 | 135.59 | 3350.25 | -447.21 | 366.75 | 1317955.78 | 3209371.81 | 40.203756 | -104.750405 | -447.59 | |
| 3613.00 | 9.34 | 145.58 | 3517.51 | -474.02 | 389.64 | 1317929.16 | 3209394.93 | 40.203683 | -104.750323 | -474.43 | |
| 3698.00 | 8.58 | 147.58 | 3601.47 | -485.06 | 396.94 | 1317918.18 | 3209402.32 | 40.203652 | -104.750297 | -485.48 | |
| 3869.00 | 3.36 | 171.01 | 3771.50 | -500.79 | 404.57 | 1317902.52 | 3209410.08 | 40.203609 | -104.750270 | -501.22 | |
| 4040.00 | 1.39 | 175.21 | 3942.35 | -507.81 | 405.53 | 1317895.51 | 3209411.10 | 40.203590 | -104.750266 | -508.23 | |
| 4211.00 | 0.56 | 172.23 | 4113.32 | -510.70 | 405.81 | 1317892.62 | 3209411.41 | 40.203582 | -104.750265 | -511.13 | |
| 4388.00 | 0.43 | 131.53 | 4290.32 | -512.00 | 406.43 | 1317891.33 | 3209412.03 | 40.203578 | -104.750263 | -512.43 | |
| 4559.00 | 2.33 | 85.15 | 4461.26 | -512.13 | 410.37 | 1317891.23 | 3209415.98 | 40.203578 | -104.750249 | -512.56 | |
| 4730.00 | 0.88 | 95.33 | 4632.19 | -511.96 | 415.14 | 1317891.44 | 3209420.75 | 40.203579 | -104.750232 | -512.40 | |
| 4901.00 | 0.92 | 230.94 | 4803.18 | -512.95 | 415.38 | 1317890.46 | 3209421.00 | 40.203576 | -104.750231 | -513.38 | |
| 5072.00 | 0.63 | 168.28 | 4974.17 | -514.73 | 414.51 | 1317888.66 | 3209420.14 | 40.203571 | -104.750234 | -515.17 | |
| 5243.00 | 0.99 | 251.67 | 5145.16 | -516.12 | 413.30 | 1317887.27 | 3209418.94 | 40.203567 | -104.750238 | -516.55 | |
| 5414.00 | 0.45 | 287.10 | 5316.14 | -516.39 | 411.25 | 1317886.98 | 3209416.89 | 40.203566 | -104.750246 | -516.82 | |

5D Survey Report

| Survey Points (Relative to centre, TVD relative to Drill Floor) | | | | | | | | | | | |
|--|------------|-----------|----------------|----------------------|----------------------|---------------------|--------------------|-----------------|------------------|---------------|---------|
| VD (US ft) | Inc (°) | Az (°) | TVD (US ft) | N. Offset (US ft) | E. Offset (US ft) | Northing (US ft) | Easting (US ft) | Latitude (°) | Longitude (°) | VS (US ft) | Comment |
| 5585.00 | 0.77 | 349.32 | 5487.13 | -515.06 | 410.40 | 1317888.30 | 3209416.03 | 40.203570 | -104.750249 | -515.49 | |
| 5755.00 | 0.73 | 15.22 | 5657.12 | -512.89 | 410.47 | 1317890.47 | 3209416.08 | 40.203576 | -104.750248 | -513.32 | |
| 5926.00 | 0.73 | 17.69 | 5828.11 | -510.80 | 411.09 | 1317892.56 | 3209416.68 | 40.203582 | -104.750246 | -511.23 | |
| 6097.00 | 0.64 | 49.85 | 5999.10 | -509.15 | 412.15 | 1317894.23 | 3209417.73 | 40.203586 | -104.750242 | -509.58 | |
| 6267.00 | 0.47 | 39.58 | 6169.09 | -508.00 | 413.32 | 1317895.39 | 3209418.89 | 40.203589 | -104.750238 | -508.43 | |
| 6438.00 | 0.35 | 85.37 | 6340.08 | -507.42 | 414.29 | 1317895.98 | 3209419.85 | 40.203591 | -104.750235 | -507.85 | |
| 6609.00 | 0.42 | 16.66 | 6511.08 | -506.77 | 414.99 | 1317896.63 | 3209420.55 | 40.203593 | -104.750232 | -507.21 | |
| 6780.00 | 0.31 | 343.81 | 6682.08 | -505.73 | 415.04 | 1317897.67 | 3209420.59 | 40.203596 | -104.750232 | -506.16 | |
| 6865.00 | 0.22 | 216.75 | 6767.08 | -505.64 | 414.87 | 1317897.76 | 3209420.43 | 40.203596 | -104.750233 | -506.07 | |
| 6951.00 | 3.79 | 350.63 | 6853.02 | -502.97 | 414.31 | 1317900.43 | 3209419.84 | 40.203603 | -104.750235 | -503.40 | |
| 7036.00 | 10.60 | 8.18 | 6937.31 | -492.44 | 414.97 | 1317910.96 | 3209420.41 | 40.203632 | -104.750232 | -492.88 | |
| 7121.00 | 17.34 | 7.14 | 7019.74 | -472.11 | 417.66 | 1317931.31 | 3209422.93 | 40.203688 | -104.750223 | -472.55 | |
| 7207.00 | 26.29 | 7099.51 | 7099.51 | -440.32 | 420.37 | 1317963.13 | 3209425.37 | 40.203775 | -104.750213 | -440.76 | |
| 7292.00 | 35.99 | 358.94 | 7172.18 | -396.44 | 421.02 | 1318007.00 | 3209425.65 | 40.203896 | -104.750211 | -396.89 | |
| 7378.00 | 46.07 | 356.69 | 7236.98 | -340.12 | 418.76 | 1318063.31 | 3209422.91 | 40.204050 | -104.750219 | -340.55 | |
| 7464.00 | 55.42 | 356.99 | 7291.34 | -273.70 | 415.10 | 1318129.70 | 3209418.69 | 40.204233 | -104.750232 | -274.13 | |
| 7549.00 | 66.10 | 358.03 | 7332.80 | -199.70 | 411.92 | 1318203.66 | 3209414.89 | 40.204436 | -104.750243 | -200.14 | |
| 7635.00 | 73.63 | 0.07 | 7362.38 | -119.03 | 410.61 | 1318284.31 | 3209412.90 | 40.204657 | -104.750248 | -119.46 | |
| 7715.00 | 82.78 | 358.41 | 7378.72 | -40.82 | 409.56 | 1318362.52 | 3209411.19 | 40.204872 | -104.750252 | -41.25 | |
| 7768.00 | 86.30 | 357.89 | 7383.76 | 11.91 | 407.85 | 1318415.23 | 3209409.04 | 40.205017 | -104.750258 | 11.48 | 7 in |
| 7865.00 | 92.73 | 356.95 | 7384.59 | 108.75 | 403.49 | 1318512.03 | 3209403.86 | 40.205283 | -104.750273 | 108.33 | |
| 7934.00 | 91.85 | 357.66 | 7381.83 | 177.62 | 400.25 | 1318580.87 | 3209400.04 | 40.205472 | -104.750285 | 177.20 | |
| 8036.00 | 90.62 | 357.72 | 7379.63 | 279.51 | 396.14 | 1318682.72 | 3209395.07 | 40.205751 | -104.750300 | 279.10 | |
| 8121.00 | 89.44 | 358.23 | 7379.59 | 364.46 | 393.14 | 1318767.64 | 3209391.35 | 40.205984 | -104.750310 | 364.04 | |
| 8206.00 | 88.77 | 358.54 | 7380.92 | 449.41 | 390.74 | 1318852.57 | 3209388.24 | 40.206218 | -104.750319 | 449.00 | |
| 8292.00 | 89.75 | 359.54 | 7382.03 | 535.39 | 389.30 | 1318938.54 | 3209386.07 | 40.206454 | -104.750324 | 534.98 | |
| 8378.00 | 90.79 | 359.78 | 7381.62 | 621.39 | 386.79 | 1319024.53 | 3209384.83 | 40.206690 | -104.750326 | 620.98 | |
| 8463.00 | 89.94 | 359.67 | 7381.08 | 706.38 | 388.38 | 1319109.52 | 3209383.71 | 40.206923 | -104.750327 | 705.98 | |
| 8548.00 | 89.69 | 358.76 | 7381.35 | 791.37 | 387.22 | 1319194.49 | 3209381.83 | 40.207156 | -104.750332 | 790.97 | |
| 8634.00 | 88.33 | 359.14 | 7382.84 | 877.34 | 385.64 | 1319280.45 | 3209379.53 | 40.207392 | -104.750337 | 876.94 | |
| 8719.00 | 89.51 | 359.09 | 7384.44 | 962.32 | 384.33 | 1319365.41 | 3209377.50 | 40.207626 | -104.750342 | 961.91 | |
| 8805.00 | 89.69 | 359.72 | 7385.04 | 1048.31 | 383.44 | 1319451.39 | 3209375.88 | 40.207862 | -104.750345 | 1047.91 | |
| 8890.00 | 90.37 | 0.17 | 7385.00 | 1133.31 | 383.35 | 1319536.38 | 3209375.08 | 40.208095 | -104.750345 | 1132.91 | |
| 8976.00 | 90.74 | 359.37 | 7384.16 | 1219.30 | 383.01 | 1319622.37 | 3209374.01 | 40.208531 | -104.750347 | 1218.90 | |
| 9061.00 | 89.75 | 359.39 | 7383.80 | 1304.30 | 382.09 | 1319707.35 | 3209372.37 | 40.208564 | -104.750350 | 1303.90 | |
| 9146.00 | 90.92 | 359.56 | 7383.30 | 1389.29 | 381.31 | 1319792.34 | 3209370.88 | 40.208798 | -104.750353 | 1388.89 | |
| 9232.00 | 89.21 | 358.89 | 7383.21 | 1475.28 | 380.15 | 1319878.31 | 3209368.99 | 40.209034 | -104.750357 | 1474.88 | |
| 9317.00 | 90.49 | 359.19 | 7383.43 | 1560.27 | 378.72 | 1319963.29 | 3209366.85 | 40.209267 | -104.750362 | 1559.87 | |
| 9402.00 | 90.93 | 0.22 | 7382.38 | 1645.26 | 378.29 | 1320048.27 | 3209365.69 | 40.209500 | -104.750364 | 1644.86 | |
| 9488.00 | 89.63 | 359.73 | 7381.96 | 1731.25 | 378.25 | 1320134.26 | 3209364.93 | 40.209736 | -104.750364 | 1730.86 | |
| 9573.00 | 89.88 | 359.98 | 7382.32 | 1816.25 | 378.03 | 1320219.26 | 3209364.00 | 40.209970 | -104.750364 | 1815.86 | |

5D Survey Report

| Survey Points (Relative to centre, TVD relative to Drill Floor) | | | | | | | | | | | | |
|---|------------|-----------|----------------|---------------------|---------------------|---------------------|--------------------|-----------------|------------------|---------------|--------------|--|
| VD (US ft) | Inc (°) | Az (°) | TVD (US ft) | N.Offset (US ft) | E.Offset (US ft) | Northing (US ft) | Easting (US ft) | Latitude (°) | Longitude (°) | VS (US ft) | Comment | |
| 9659.00 | 88.94 | 359.25 | 7383.20 | 1902.24 | 377.46 | 1320305.24 | 3209362.69 | 40.210206 | -104.750367 | 1901.85 | | |
| 9744.00 | 88.03 | 358.66 | 7385.45 | 1987.20 | 375.91 | 1320390.18 | 3209360.43 | 40.210439 | -104.750372 | 1986.80 | | |
| 9830.00 | 90.00 | 359.60 | 7386.93 | 2073.17 | 374.60 | 1320476.14 | 3209358.40 | 40.210675 | -104.750377 | 2072.78 | | |
| 9915.00 | 92.28 | 0.43 | 7385.24 | 2158.15 | 374.62 | 1320561.11 | 3209357.70 | 40.210908 | -104.750377 | 2157.75 | | |
| 10000.00 | 88.89 | 358.76 | 7384.37 | 2243.13 | 374.02 | 1320646.08 | 3209356.38 | 40.211142 | -104.750379 | 2242.73 | | |
| 10085.00 | 90.18 | 0.28 | 7385.06 | 2328.12 | 373.31 | 1320731.06 | 3209354.95 | 40.211375 | -104.750381 | 2327.72 | | |
| 10171.00 | 88.27 | 0.69 | 7386.22 | 2414.10 | 374.04 | 1320817.05 | 3209354.96 | 40.211611 | -104.750379 | 2413.71 | | |
| 10256.00 | 86.79 | 359.71 | 7389.89 | 2499.02 | 374.33 | 1320901.97 | 3209354.54 | 40.211844 | -104.750378 | 2498.62 | | |
| 10341.00 | 88.40 | 359.78 | 7393.45 | 2583.94 | 373.96 | 1320986.88 | 3209353.44 | 40.212077 | -104.750379 | 2583.55 | | |
| 10427.00 | 89.69 | 359.68 | 7394.89 | 2669.92 | 373.55 | 1321072.86 | 3209352.31 | 40.212313 | -104.750380 | 2669.53 | | |
| 10512.00 | 91.05 | 0.59 | 7394.34 | 2754.92 | 373.75 | 1321157.86 | 3209351.79 | 40.212547 | -104.750380 | 2754.53 | | |
| 10598.00 | 91.91 | 0.97 | 7392.12 | 2840.88 | 374.92 | 1321243.82 | 3209352.24 | 40.212783 | -104.750376 | 2840.49 | | |
| 10683.00 | 92.16 | 0.14 | 7389.10 | 2925.82 | 375.74 | 1321328.77 | 3209352.34 | 40.213016 | -104.750373 | 2925.43 | | |
| 10768.00 | 92.16 | 359.04 | 7385.90 | 3010.76 | 375.14 | 1321413.70 | 3209351.02 | 40.213249 | -104.750375 | 3010.37 | | |
| 10854.00 | 93.70 | 358.68 | 7381.50 | 3096.63 | 373.43 | 1321499.55 | 3209348.59 | 40.213485 | -104.750381 | 3096.23 | | |
| 10939.00 | 93.79 | 358.19 | 7375.95 | 3181.41 | 371.11 | 1321584.31 | 3209345.56 | 40.213717 | -104.750389 | 3181.02 | | |
| 11024.00 | 91.97 | 359.01 | 7371.68 | 3266.28 | 369.04 | 1321669.15 | 3209342.77 | 40.213950 | -104.750397 | 3265.89 | | |
| 11109.00 | 90.68 | 359.04 | 7369.71 | 3351.24 | 367.59 | 1321754.10 | 3209340.60 | 40.214184 | -104.750402 | 3350.85 | | |
| 11195.00 | 88.94 | 358.54 | 7370.00 | 3437.22 | 365.78 | 1321840.06 | 3209338.06 | 40.214420 | -104.750408 | 3436.83 | | |
| 11280.00 | 88.09 | 359.35 | 7372.20 | 3522.17 | 364.21 | 1321925.00 | 3209335.78 | 40.214653 | -104.750414 | 3521.79 | | |
| 11366.00 | 89.01 | 1.01 | 7374.38 | 3608.14 | 364.48 | 1322010.97 | 3209335.33 | 40.214889 | -104.750413 | 3607.76 | | |
| 11451.00 | 91.48 | 1.79 | 7374.01 | 3693.11 | 366.56 | 1322095.95 | 3209336.69 | 40.215122 | -104.750405 | 3692.72 | | |
| 11564.00 | 91.30 | 1.17 | 7371.27 | 3806.04 | 369.48 | 1322208.90 | 3209338.65 | 40.215432 | -104.750395 | 3805.65 | LAST MWD SVY | |
| 11620.00 | 91.30 | 1.17 | 7370.00 | 3862.01 | 370.62 | 1322264.88 | 3209339.32 | 40.215586 | -104.750391 | 3861.62 | PROJ. TO IL | |
| Formation Points (Relative to centre, TVD relative to Drill Floor) | | | | | | | | | | | | |
| Name | | | | | | | | | | | | |
| TVD (US ft) | | | | | | | | | | | | |