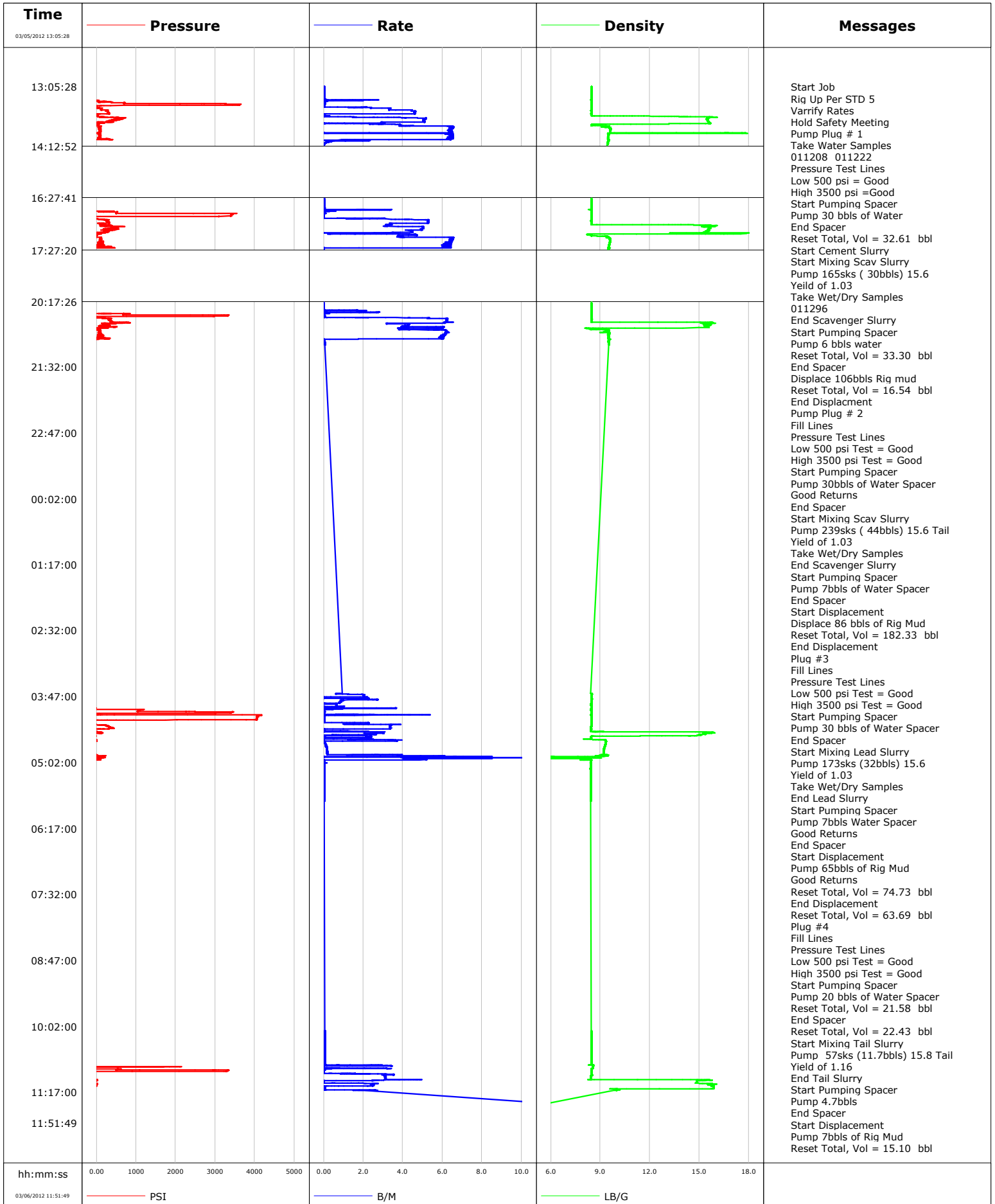


Well	RMCCS STATE # 1	Client	SLB CARBON SERVICES
Field	WILDCAT	SIR No.	702240
Engineer	DANT RYAN	Job Type	PLUG AND ABANDON
Country	United States	Job Date	03-05-2012



				Customer SLB CARBON SERVICES				Job Number 702240									
Well RMCCS STATE # 1 RMCCS STATE #1				Location (legal) CRAIG, CO				Schlumberger Location				Job Start Mar/05/2012					
Field WILDCAT			Formation Name/Type Shale			Deviation deg		Bit Size 8.8 in		Well MD 8694.0 ft		Well TVD 8694.0 ft					
County MOFFET			State/Province Colorado			BHP psi		BHST 81 degF		BHCT 80 degF		Pore Press. Gradient lb/gal					
Well Master 063120968			API/UWI														
Rig Name PATTERSON 166		Drilled For Injection		Service Via Land		Casing/Liner											
						Depth, ft		Size, in		Weight, lb/ft		Grade		Thread			
Offshore Zone		Well Class New		Well Type Exploration													
Drilling Fluid Type Bentonite			Max. Density 9.20 lb/gal		Plastic Viscosity 23.000 cP		Tubing/Drill Pipe										
						T/D		Depth, ft		Size, in		Weight, lb/ft		Grade		Thread	
Service Line Cementing		Job Type PLUG AND ABANDON															
Max. Allowed Tub. Press psi		Max. Allowed Ann. Press psi		WH Connection 4 1/2" XH DP pin		Perforations/Open Hole											
						Top, ft		Bottom, ft		shot/ft		No. of Shots		Total Interval ft			
						ft		ft						Diameter in			
						ft		ft									
Service Instructions SET 5 ABANDONMENT PLUGS #1@ 8694'-8294', #2@ 7390'-6890', #3@ 5488'-5288', #4@ 1333'-1183', #5@ 55'-0' PLUG #1 PUMP 30BBLs WATER SPACER PUMP 165SKS (30BBLs) 15.6 YIELD OF 1.03 PUMP 7BBLs WATER SPACER DISPLACE 109BBLs OF RIG MUD PLUG #2 PUMP 30BBLs WATER SPACER PUMP 239SKS (44BBLs) 15.6 TAIL YIELD OF 1.03 PUMP 7BBLs OF WATER SPACER							Treat Down Drill Pipe		Displacement bbl		Packer Type		Packer Depth ft				
							Tubing Vol. bbl		Casing Vol. bbl		Annular Vol. bbl		Openhole Vol. bbl				
Casing/Tubing Secured <input checked="" type="checkbox"/>				1 Hole Vol. Circulated prior to Cement <input checked="" type="checkbox"/>				Casing Tools				Squeeze Job					
Lift Pressure psi				Shoe Type				Squeeze Type									
Pipe Rotated <input type="checkbox"/>				Pipe Reciprocated <input type="checkbox"/>				Shoe Depth ft				Tool Type					
No. Centralizers				Top Plugs		Bottom Plugs		Stage Tool Type				Tool Depth ft					
Cement Head Type				Stage Tool Depth ft				Tail Pipe Size in									
Job Scheduled For Mar/05/2012 07:00				Arrived on Location Mar/05/2012 07:00				Leave Location Mar/06/2012 12:00				Collar Type					
												Tail Pipe Depth ft					
												Sqz. Total Vol. bbl					
Date	Time 24-hr clock	Treating Pressure PSI	Flow Rate B/M	Density LB/G	Volume BBL	Message											
03/05/2012	13:05:28	-107	0.0	8.45	2.1	Started Acquisition											
03/05/2012	13:05:31	-108	0.0	8.45	2.1	Rig Up Per STD 5											
03/05/2012	13:07:08	-108	0.0	8.45	2.1												
03/05/2012	13:08:48	-108	0.0	8.45	2.2												
03/05/2012	13:10:28	-108	0.0	8.45	2.2												
03/05/2012	13:12:08	-108	0.0	8.45	2.3												
03/05/2012	13:13:48	-108	0.0	8.45	2.3												
03/05/2012	13:14:05	-108	0.0	8.45	2.3	Pressure Test Lines											
03/05/2012	13:14:07	-108	0.0	8.45	2.3	Low 500 psi = Good											
03/05/2012	13:15:28	-108	0.0	8.45	2.3												
03/05/2012	13:17:08	-108	0.0	8.45	2.4												
03/05/2012	13:18:48	-107	0.0	8.45	2.4												
03/05/2012	13:20:28	-94	1.9	8.45	0.1												
03/05/2012	13:22:08	-85	0.0	8.45	2.0												
03/05/2012	13:23:48	722	0.1	8.45	2.1												
03/05/2012	13:25:28	3628	0.0	8.45	2.2												
03/05/2012	13:27:08	98	0.0	8.45	2.3												
03/05/2012	13:28:05	-86	0.0	8.45	2.3	Start Pumping Spacer											
03/05/2012	13:28:48	-80	0.0	8.45	2.3												
03/05/2012	13:30:28	88	3.3	8.45	5.9												
03/05/2012	13:32:08	130	3.3	8.44	11.4												

Well		Field		Job Start		Customer		Job Number	
RMCCS STATE # 1 RMCCS STATE #1		WILDCAT		Mar/05/2012		SLB CARBON SERVICES		702240	
Date	Time 24-hr clock	Treating Pressure PSI	Flow Rate B/M	Density LB/G	Volume BBL	Message			
03/05/2012	13:33:48	278	4.6	8.45	18.7				
03/05/2012	13:35:28	303	4.6	8.45	26.4				
03/05/2012	13:37:08	24	0.0	8.44	32.2	End Spacer			
03/05/2012	13:37:19	23	0.0	8.44	32.2	Reset Total, Vol = 32.61 bbl			
03/05/2012	13:38:48	30	0.3	8.96	32.3				
03/05/2012	13:40:18	132	1.6	15.97	32.5	Start Cement Slurry			
03/05/2012	13:40:21	108	1.6	16.07	32.6	Start Mixing Scav Slurry			
03/05/2012	13:40:24	222	1.6	16.02	32.7	Pump 165sks (30bbbs) 15.6			
03/05/2012	13:40:28	191	2.5	15.66	32.8				
03/05/2012	13:42:08	605	5.2	15.45	40.1				
03/05/2012	13:43:48	469	5.0	15.52	48.6				
03/05/2012	13:45:28	264	5.1	15.54	57.0				
03/05/2012	13:47:08	27	2.9	15.56	63.3				
03/05/2012	13:47:21	-99	0.1	15.66	63.7	End Scavenger Slurry			
03/05/2012	13:47:28	-98	0.1	15.65	63.7	Start Pumping Spacer			
03/05/2012	13:47:32	-98	0.0	15.65	63.7	Pump 6 bbbs water			
03/05/2012	13:48:29	-43	3.4	8.60	65.5	Reset Total, Vol = 33.30 bbl			
03/05/2012	13:48:48	-45	3.8	8.49	66.6				
03/05/2012	13:49:59	-46	3.9	8.44	71.2	Displace 106bbbs Rig mud			
03/05/2012	13:50:28	80	6.2	9.51	73.2				
03/05/2012	13:51:49	64	6.6	9.09	82.0	Reset Total, Vol = 16.54 bbl			
03/05/2012	13:52:08	92	6.4	9.59	84.0				
03/05/2012	13:53:48	98	6.3	9.62	94.7				
03/05/2012	13:55:28	99	6.3	9.60	105.3				
03/05/2012	13:57:08	94	6.3	9.57	116.0				
03/05/2012	13:58:48	74	6.3	9.45	124.5				
03/05/2012	14:00:28	91	6.4	9.50	135.1				
03/05/2012	14:02:08	78	6.4	9.47	145.8				
03/05/2012	14:03:48	70	6.3	9.47	156.5				
03/05/2012	14:05:28	323	6.4	9.45	167.2				
03/05/2012	14:07:08	-82	2.3	9.50	171.5				
03/05/2012	14:08:48	-112	0.2	9.45	172.6				
03/05/2012	14:10:00	-110	0.0	9.44	172.7	End Displacment			
03/05/2012	14:10:28	-110	0.0	9.44	172.8				
03/05/2012	16:29:51	-105	0.0	8.45	2.7	Pump Plug # 2			
03/05/2012	16:29:54	-104	0.0	8.45	2.7	Pressure Test Lines			
03/05/2012	16:29:56	-104	0.0	8.45	2.7	Low 500 psi Test = Good			
03/05/2012	16:30:03	-104	0.0	8.45	2.7	Start Pumping Spacer			
03/05/2012	16:30:04	-104	0.0	8.45	2.7	Pump 30bbbs of Water Spacer			
03/05/2012	16:30:28	-104	0.0	8.45	2.7				
03/05/2012	16:32:08	-105	0.0	8.45	2.7				
03/05/2012	16:33:48	-105	0.0	8.45	2.8				
03/05/2012	16:35:28	-105	0.0	8.45	2.8				
03/05/2012	16:37:08	-105	0.0	8.45	2.9				
03/05/2012	16:38:48	-105	0.0	8.45	2.9				
03/05/2012	16:40:28	-104	0.0	8.45	3.0				
03/05/2012	16:42:08	-49	3.3	8.44	1.5				
03/05/2012	16:43:48	369	0.1	8.45	2.1				
03/05/2012	16:45:28	506	0.0	8.45	2.1				
03/05/2012	16:47:08	3421	0.0	8.45	2.2				
03/05/2012	16:48:48	3387	0.0	8.45	2.2				
03/05/2012	16:50:28	-89	0.0	8.45	2.2				
03/05/2012	16:52:08	-25	1.8	8.45	3.2				
03/05/2012	16:53:48	275	5.3	8.45	9.9				

Well		Field		Job Start		Customer		Job Number	
RMCCS STATE # 1 RMCCS STATE #1		WILDCAT		Mar/05/2012		SLB CARBON SERVICES		702240	
Date	Time 24-hr clock	Treating Pressure PSI	Flow Rate B/M	Density LB/G	Volume BBL	Message			
03/05/2012	16:57:08	31	3.7	8.45	27.4				
03/05/2012	16:58:47	167	3.4	10.35	32.9	End Spacer			
03/05/2012	16:58:48	145	3.4	10.96	33.0				
03/05/2012	16:58:51	148	3.4	12.10	33.2	Start Mixing Scav Slurry			
03/05/2012	16:58:54	195	3.2	13.13	33.3	Pump 239sks (44bbls) 15.6 Tail			
03/05/2012	17:00:00	345	3.2	15.96	36.9	Yield of 1.03			
03/05/2012	17:00:12	275	3.2	16.01	37.5	Take Wet/Dry Samples			
03/05/2012	17:00:28	275	3.2	15.38	38.4				
03/05/2012	17:02:08	436	5.0	15.66	46.0				
03/05/2012	17:03:48	514	4.9	15.57	54.3				
03/05/2012	17:05:28	249	4.4	15.57	62.2				
03/05/2012	17:07:08	222	4.4	15.41	69.6				
03/05/2012	17:08:13	94	3.6	14.23	74.0	End Scavenger Slurry			
03/05/2012	17:08:17	90	3.3	15.11	74.2	Start Pumping Spacer			
03/05/2012	17:08:20	95	3.3	15.17	74.4	Pump 7bbls of Water Spacer			
03/05/2012	17:08:48	-6	2.2	15.14	75.6				
03/05/2012	17:10:28	3	4.7	8.41	80.8				
03/05/2012	17:11:39	-32	3.8	8.45	86.0	End Spacer			
03/05/2012	17:11:46	-32	3.8	8.46	86.4	Start Displacement			
03/05/2012	17:11:51	-28	3.9	8.70	86.7	Displace 86 bbls of Rig Mud			
03/05/2012	17:12:08	-22	3.9	9.32	87.8				
03/05/2012	17:13:02	-23	3.9	9.47	91.3	Reset Total, Vol = 182.33 bbl			
03/05/2012	17:13:48	104	6.5	9.41	95.8				
03/05/2012	17:15:28	113	6.5	9.54	106.6				
03/05/2012	17:17:08	126	6.5	9.58	117.3				
03/05/2012	17:18:48	116	6.3	9.56	128.0				
03/05/2012	17:20:28	76	6.3	9.54	138.5				
03/05/2012	17:22:08	28	6.0	9.52	149.0				
03/05/2012	17:23:48	61	6.1	9.50	159.5				
03/05/2012	17:25:28	-100	0.0	9.55	168.6				
03/05/2012	17:25:48	-99	0.0	9.52	168.6	End Displacement			
03/05/2012	20:19:38	-108	0.0	8.46	2.5	Plug #3			
03/05/2012	20:19:56	-107	0.0	8.46	2.5	Fill Lines			
03/05/2012	20:20:00	-107	0.0	8.46	2.5	Pressure Test Lines			
03/05/2012	20:20:03	-107	0.0	8.46	2.5	Low 500 psi Test = Good			
03/05/2012	20:20:08	-108	0.0	8.46	2.5	Start Pumping Spacer			
03/05/2012	20:20:11	-107	0.0	8.46	2.5	Pump 30 bbls of Water Spacer			
03/05/2012	20:20:28	-108	0.0	8.46	2.5				
03/05/2012	20:22:08	-108	0.0	8.46	2.6				
03/05/2012	20:23:48	-107	0.0	8.46	2.6				
03/05/2012	20:25:28	-108	0.0	8.46	2.6				
03/05/2012	20:27:08	-107	0.0	8.46	2.6				
03/05/2012	20:28:48	-107	0.0	8.46	0.0				
03/05/2012	20:30:28	-57	0.0	8.46	2.0				
03/05/2012	20:32:08	673	0.0	8.46	2.1				
03/05/2012	20:33:48	3311	0.0	8.46	2.1				
03/05/2012	20:35:28	-90	0.0	8.46	2.2				
03/05/2012	20:37:08	314	6.2	8.45	7.7				
03/05/2012	20:38:48	345	6.2	8.46	18.0				
03/05/2012	20:40:28	350	6.2	8.45	28.4				
03/05/2012	20:41:22	383	6.2	8.45	34.0	End Spacer			
03/05/2012	20:41:38	686	6.1	15.66	35.6	Start Mixing Lead Slurry			
03/05/2012	20:41:41	741	6.1	15.73	35.9	Pump 173sks (32bbls) 15.6			
03/05/2012	20:41:45	837	6.1	15.80	36.4	Yield of 1.03			

Well		Field		Job Start		Customer		Job Number	
RMCCS STATE # 1 RMCCS STATE #1		WILDCAT		Mar/05/2012		SLB CARBON SERVICES		702240	
Date	Time 24-hr clock	Treating Pressure PSI	Flow Rate B/M	Density LB/G	Volume BBL	Message			
03/05/2012	20:43:27	294	4.3	15.25	44.1	Take Wet/Dry Samples			
03/05/2012	20:43:48	253	4.3	15.33	45.6				
03/05/2012	20:45:28	238	4.1	15.37	52.7				
03/05/2012	20:47:00	214	4.3	15.39	59.8	End Lead Slurry			
03/05/2012	20:47:08	153	4.3	15.48	60.4				
03/05/2012	20:48:01	74	3.9	8.91	64.0	Start Pumping Spacer			
03/05/2012	20:48:03	15	3.7	8.62	64.1	Pump 7bbls Water Spacer			
03/05/2012	20:48:48	70	6.0	8.40	67.6				
03/05/2012	20:49:08	-14	4.3	8.44	69.2	Good Returns			
03/05/2012	20:49:28	-33	4.3	8.42	70.7	End Spacer			
03/05/2012	20:49:30	-19	4.3	8.43	70.8	Start Displacement			
03/05/2012	20:49:31	-6	4.3	8.43	70.9	Pump 65bbls of Rig Mud			
03/05/2012	20:49:51	-39	3.8	9.24	72.3	Good Returns			
03/05/2012	20:50:04	85	5.7	9.38	73.2	Reset Total, Vol = 74.73 bbl			
03/05/2012	20:50:28	76	6.1	9.50	75.5				
03/05/2012	20:52:08	72	6.2	9.27	85.8				
03/05/2012	20:53:48	79	6.2	9.54	96.2				
03/05/2012	20:55:28	86	6.0	9.46	106.4				
03/05/2012	20:57:08	47	6.0	9.52	116.5				
03/05/2012	20:58:48	194	5.9	9.50	126.4				
03/05/2012	21:00:28	309	5.3	9.49	136.3				
03/05/2012	21:00:53	3	0.0	9.55	136.7	End Displacement			
03/05/2012	21:02:08	-98	0.0	9.50	136.7				
03/05/2012	21:03:48	-102	0.0	9.50	136.8				
03/05/2012	21:05:28	-104	0.1	9.50	136.8				
03/05/2012	21:07:08	-120	0.1	9.50	136.9				
03/06/2012	03:43:34	-107	0.8	8.43	6.5	Plug #4			
03/06/2012	03:43:35	-107	0.8	8.43	6.5	Fill Lines			
03/06/2012	03:43:37	-107	0.8	8.43	6.6	Pressure Test Lines			
03/06/2012	03:43:38	-107	0.7	8.44	6.6	Low 500 psi Test = Good			
03/06/2012	03:43:39	-108	0.7	8.44	6.6	High 3500 psi Test = Good			
03/06/2012	03:43:40	-108	0.7	8.44	6.6	Start Pumping Spacer			
03/06/2012	03:43:42	-109	0.7	8.45	6.6	Pump 20 bbls of Water Spacer			
03/06/2012	03:43:48	-109	0.6	8.46	6.7				
03/06/2012	03:45:28	-66	2.0	8.46	9.1				
03/06/2012	03:47:08	-87	2.0	8.47	12.4				
03/06/2012	03:48:48	-115	0.0	8.46	13.6				
03/06/2012	03:50:28	-50	2.7	8.47	16.9				
03/06/2012	03:52:08	-103	0.9	8.45	19.5				
03/06/2012	03:53:48	-93	0.8	8.45	21.0				
03/06/2012	03:55:28	-117	0.0	8.44	21.7				
03/06/2012	03:57:08	-98	0.6	8.44	22.5				
03/06/2012	03:58:48	-104	0.0	8.45	23.4				
03/06/2012	04:00:28	-27	3.6	8.44	1.7				
03/06/2012	04:02:08	1107	0.0	8.44	2.3				
03/06/2012	04:03:48	1044	0.0	8.44	2.4				
03/06/2012	04:05:28	3389	0.0	8.44	2.4				
03/06/2012	04:07:08	-94	0.0	8.44	2.4				
03/06/2012	04:08:05	159	5.4	8.43	4.6	Reset Total, Vol = 21.58 bbl			
03/06/2012	04:08:48	4079	0.0	8.45	5.3				
03/06/2012	04:10:28	4055	0.0	8.44	5.4				
03/06/2012	04:12:08	4043	0.0	8.44	5.5				
03/06/2012	04:13:48	1107	0.0	8.45	5.5				
03/06/2012	04:15:28	-101	0.0	8.44	5.6				

Well		Field		Job Start		Customer		Job Number	
RMCCS STATE # 1 RMCCS STATE #1		WILDCAT		Mar/05/2012		SLB CARBON SERVICES		702240	
Date	Time 24-hr clock	Treating Pressure PSI	Flow Rate B/M	Density LB/G	Volume BBL	Message			
03/06/2012	04:18:48	-78	2.2	8.45	9.8				
03/06/2012	04:20:28	288	3.4	8.44	15.5				
03/06/2012	04:22:08	328	3.3	8.44	21.1				
03/06/2012	04:23:48	313	3.3	8.44	26.6				
03/06/2012	04:25:02	-109	0.0	8.43	27.1	End Spacer			
03/06/2012	04:25:28	-106	0.0	8.43	27.1				
03/06/2012	04:25:51	-106	0.0	8.43	27.1	Reset Total, Vol = 22.43 bbl			
03/06/2012	04:27:08	4	2.6	9.15	27.7				
03/06/2012	04:27:16	-9	2.7	14.88	28.1	Start Mixing Tail Slurry			
03/06/2012	04:27:19	-19	2.7	14.97	28.2	Pump 57sks (11.7bbls) 15.8 Tail			
03/06/2012	04:27:54	100	3.0	15.60	29.9	Yield of 1.16			
03/06/2012	04:28:48	117	3.0	15.47	32.6				
03/06/2012	04:30:28	-46	2.6	15.10	37.0				
03/06/2012	04:32:02	-26	2.1	9.85	38.2	End Tail Slurry			
03/06/2012	04:32:05	-27	2.2	9.14	38.3	Start Pumping Spacer			
03/06/2012	04:32:06	-27	2.2	8.96	38.4	Pump 4.7bbls			
03/06/2012	04:32:08	-32	2.3	8.71	38.4				
03/06/2012	04:33:39	-68	2.4	8.43	42.0	End Spacer			
03/06/2012	04:33:48	-92	0.0	8.43	42.2				
03/06/2012	04:33:50	-96	0.0	8.43	42.2	Start Displacement			
03/06/2012	04:33:52	-97	0.0	8.43	42.2	Pump 7bbls of Rig Mud			
03/06/2012	04:34:09	-103	0.0	8.43	42.2	Reset Total, Vol = 15.10 bbl			
03/06/2012	04:35:28	-110	0.0	8.43	42.2				
03/06/2012	04:37:00	-10	3.6	9.31	46.5	End Displacement			
03/06/2012	04:37:08	-6	3.7	9.31	47.0				
03/06/2012	04:38:48	-99	0.0	9.31	49.4				
03/06/2012	04:40:28	-106	0.1	9.31	49.5				
03/06/2012	04:42:08	-118	0.1	9.29	49.6				
03/06/2012	04:43:48	-122	0.1	9.27	49.8				
03/06/2012	04:45:28	-122	0.2	9.24	50.1				
03/06/2012	04:47:08	-122	0.2	9.22	50.3				
03/06/2012	04:48:48	-122	0.2	9.20	50.6				
03/06/2012	04:50:28	-105	0.2	9.19	50.9				
03/06/2012	04:52:08	-94	0.2	9.18	51.2				
03/06/2012	04:53:48	13	3.8	9.11	53.7				
03/06/2012	04:55:28	-37	5.2	5.10	62.7				
03/06/2012	04:57:08	81	5.1	7.83	70.9				
03/06/2012	04:58:48	89	5.2	8.30	79.7				
03/06/2012	05:00:28	-132	0.0	8.44	81.4				
03/06/2012	05:02:08	-128	0.0	8.43	81.5				
03/06/2012	05:03:48	-115	0.0	8.43	81.5				
03/06/2012	05:05:28	-101	0.0	8.43	81.6				
03/06/2012	05:07:08	-118	0.0	8.43	0.0				
03/06/2012	05:08:48	-119	0.0	8.41	0.1				
03/06/2012	05:10:28	-119	0.0	8.42	0.1				
03/06/2012	05:12:08	-118	0.0	8.43	0.2				
03/06/2012	05:13:48	-118	0.0	8.43	0.2				
03/06/2012	05:15:28	-118	0.0	8.43	0.3				
03/06/2012	05:17:08	-119	0.0	8.43	0.4				
03/06/2012	05:18:48	-118	0.0	8.43	0.4				
03/06/2012	05:22:08	-118	0.0	8.43	0.6				
03/06/2012	05:23:48	-119	0.0	8.43	0.6				
03/06/2012	05:25:28	-118	0.0	8.43	0.7				
03/06/2012	05:27:08	-118	0.0	8.43	0.7				

Well		Field		Job Start		Customer		Job Number	
RMCCS STATE # 1 RMCCS STATE #1		WILDCAT		Mar/05/2012		SLB CARBON SERVICES		702240	
Date	Time 24-hr clock	Treating Pressure PSI	Flow Rate B/M	Density LB/G	Volume BBL	Message			
03/06/2012	05:30:28	-118	0.0	8.43	0.9				
03/06/2012	05:32:08	-118	0.0	8.44	0.9				
03/06/2012	05:33:48	-118	0.0	8.43	1.0				
03/06/2012	05:35:28	-119	0.0	8.44	1.1				
03/06/2012	05:37:08	-119	0.0	8.44	1.1				
03/06/2012	05:38:48	-119	0.0	8.44	1.2				
03/06/2012	05:40:28	-119	0.0	8.44	1.2				
03/06/2012	05:42:08	-119	0.0	8.44	1.3				
03/06/2012	05:43:48	-119	0.0	8.44	1.4				
03/06/2012	05:44:36	-120	0.0	8.44	1.4	Reset Total, Vol = 40.83 bbl			
03/06/2012	05:45:28	-119	0.0	8.44	1.4				
03/06/2012	10:07:26	-112	0.1	8.47	13.9	Pump Plug #5			
03/06/2012	10:07:33	-112	0.1	8.47	13.9	Pressure Test Lines			
03/06/2012	10:07:35	-112	0.1	8.47	13.9	Low 500 psi Test = Good			
03/06/2012	10:07:38	-112	0.1	8.47	13.9	Start Pumping Spacer			
03/06/2012	10:07:40	-112	0.1	8.47	13.9	Pump 20 bbls of Water Spacer			
03/06/2012	10:08:48	-112	0.1	8.47	14.0				
03/06/2012	10:10:28	-112	0.1	8.47	14.0				
03/06/2012	10:12:08	-111	0.1	8.47	14.1				
03/06/2012	10:13:48	-111	0.1	8.47	14.2				
03/06/2012	10:15:28	-110	0.1	8.47	14.3				
03/06/2012	10:17:08	-110	0.1	8.47	14.4				
03/06/2012	10:18:48	-111	0.1	8.47	14.5				
03/06/2012	10:20:28	-111	0.1	8.47	14.6				
03/06/2012	10:22:08	-111	0.0	8.47	14.6				
03/06/2012	10:23:48	-111	0.1	8.47	14.7				
03/06/2012	10:25:28	-111	0.1	8.47	14.8				
03/06/2012	10:27:08	-111	0.1	8.47	14.9				
03/06/2012	10:28:48	-111	0.1	8.47	15.0				
03/06/2012	10:30:28	-113	0.1	8.47	15.1				
03/06/2012	10:32:08	-113	0.0	8.47	15.2				
03/06/2012	10:33:48	-113	0.1	8.47	15.3				
03/06/2012	10:35:28	-114	0.1	8.47	15.3				
03/06/2012	10:37:08	-114	0.1	8.47	15.4				
03/06/2012	10:38:48	-114	0.1	8.47	15.5				
03/06/2012	10:40:28	-114	0.1	8.47	15.6				
03/06/2012	10:42:08	-115	0.1	8.47	15.7				
03/06/2012	10:43:48	-114	0.1	8.47	15.8				
03/06/2012	10:45:28	-111	0.1	8.47	15.9				
03/06/2012	10:47:08	-31	3.4	8.55	18.0				
03/06/2012	10:48:48	-111	0.0	8.54	19.5				
03/06/2012	10:50:28	-119	0.2	8.45	2.2				
03/06/2012	10:52:08	3333	0.0	8.45	2.2				
03/06/2012	10:53:48	-109	0.0	8.45	2.3				
03/06/2012	10:55:28	-109	0.0	8.45	2.3				
03/06/2012	10:57:08	-41	3.5	8.45	5.8				
03/06/2012	10:58:48	-54	3.1	8.44	11.1				
03/06/2012	11:00:28	-50	3.1	8.44	16.3				
03/06/2012	11:02:08	-46	3.1	8.43	21.5				
03/06/2012	11:02:46	-33	3.5	8.29	23.4	End Spacer			
03/06/2012	11:02:55	3	4.9	11.24	24.0	Start Mixing Scav Slurry			
03/06/2012	11:03:48	2	2.4	15.23	26.8				
03/06/2012	11:05:28	-103	0.0	14.84	27.5				
03/06/2012	11:07:08	-19	2.6	15.25	28.1				

Well RMCCS STATE # 1 RMCCS STATE #1			Field WILDCAT		Job Start Mar/05/2012		Customer SLB CARBON SERVICES		Job Number 702240	
Date	Time 24-hr clock	Treating Pressure PSI	Flow Rate B/M	Density LB/G	Volume BBL	Message				
03/06/2012	11:10:28	-110	0.0	15.86	35.4					
03/06/2012	11:12:08	-114	0.1	15.87	35.4					
03/06/2012	11:13:48	-106	0.1	10.00	35.5					
03/06/2012	11:15:13	-61	2.0	9.88	36.6	End Scavenger Slurry				

Post Job Summary

Average Pump Rates, bbl/min					Volume of Fluid Injected, bbl			
Slurry 0.9	N2	Mud	Maximum Rate 25.0		Total Slurry 624.4	Mud 0.0	Spacer 309.0	N2
Treating Pressure Summary, psi					Breakdown Fluid			
Maximum 4167	Final -26	Average 543	Bump Plug to	Breakdown	Type	Volume bbl		Density lb/gal
Avg. N2 Percent %	Designed Slurry Volume 128.0 bbl		Displacement 156.4 bbl	Mix Water Temp 60 degF	Cement Circulated to Surface? <input checked="" type="checkbox"/>	Volume 6.0 bbl		
Customer or Authorized Representative MITCH CARLSON					Schlumberger Supervisor DANT RYAN		Washed Thru Perfs <input type="checkbox"/>	To ft
					Circulation Lost <input type="checkbox"/>		Job Completed <input checked="" type="checkbox"/>	
					-		-	