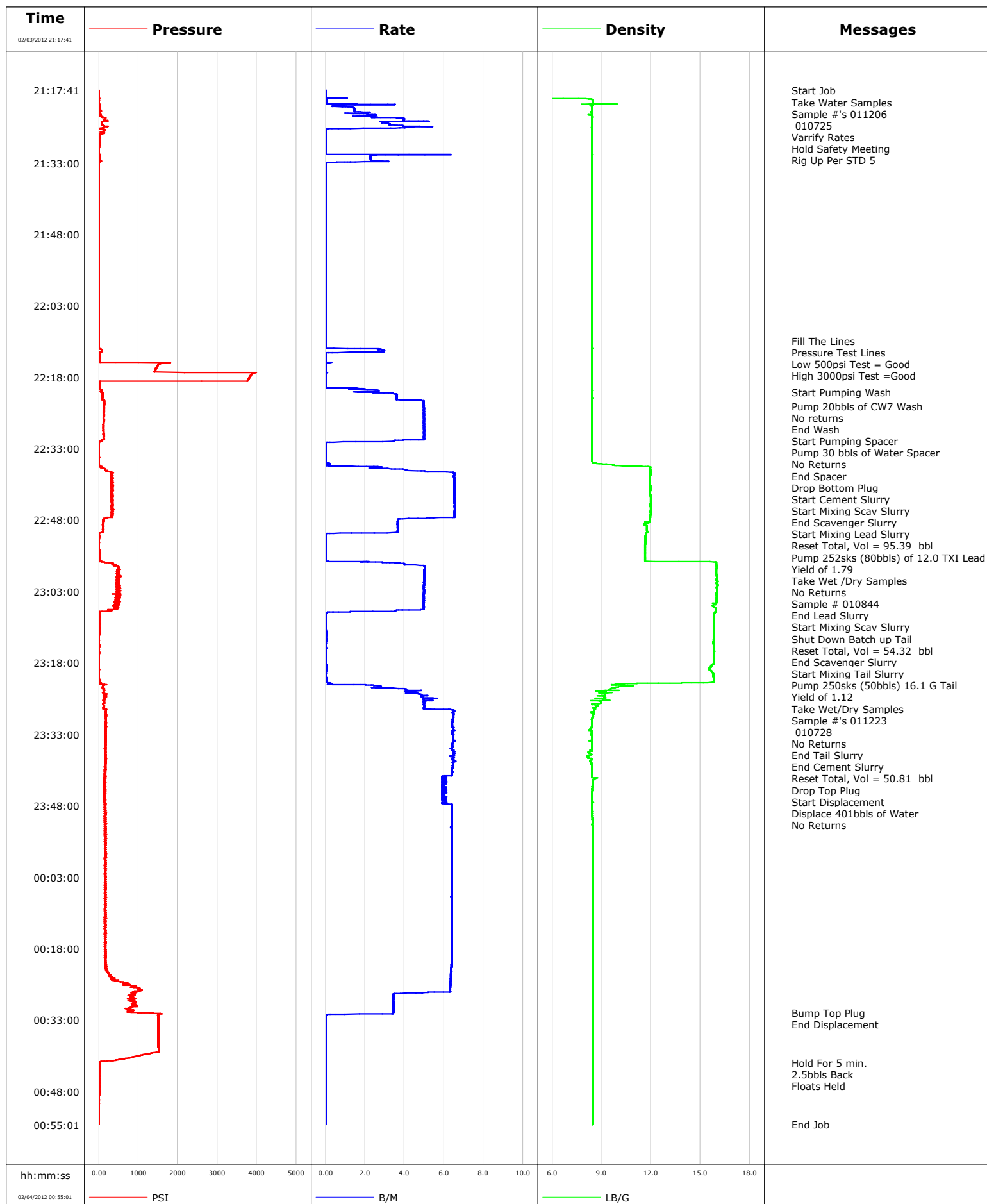


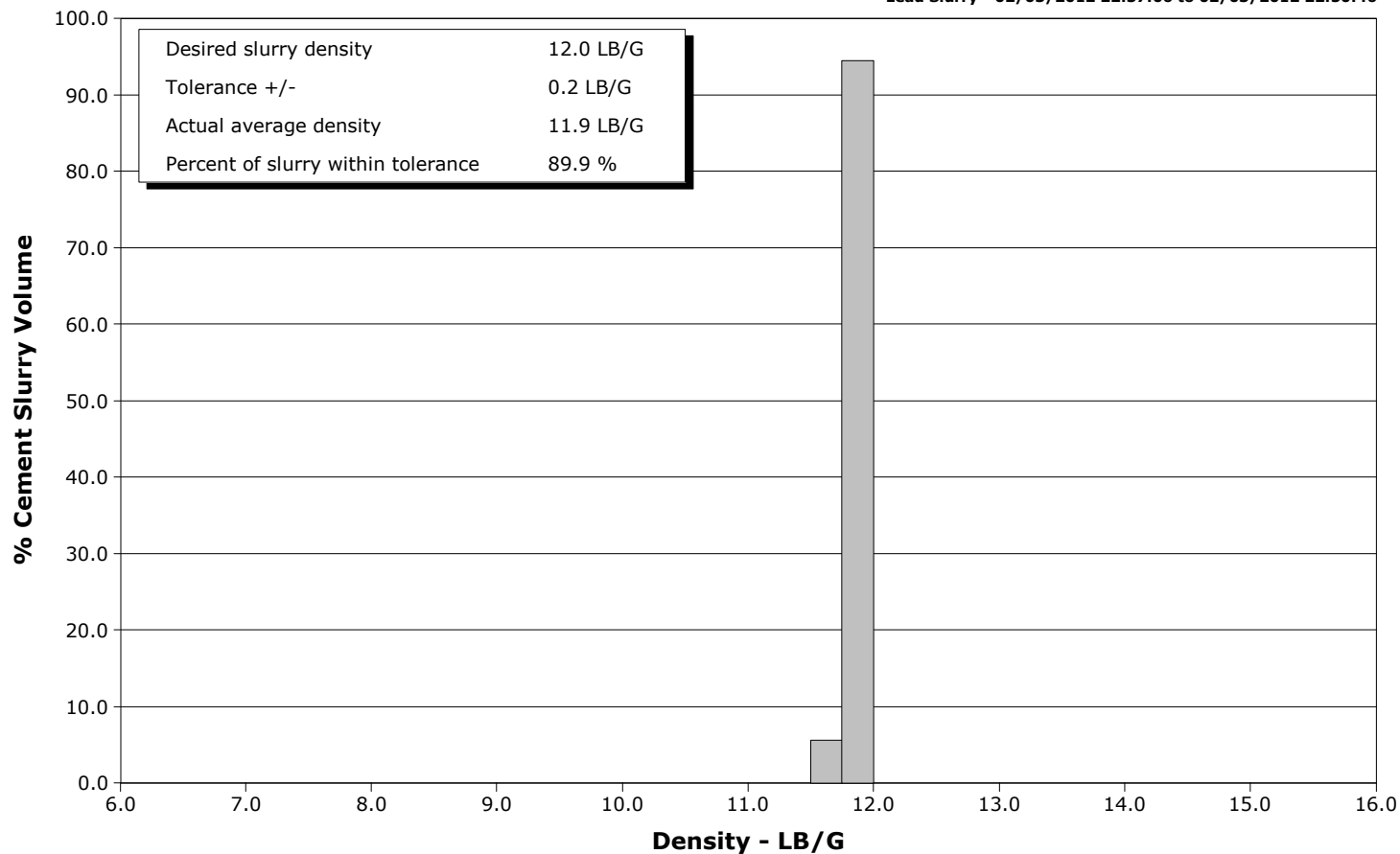
<b>Well</b>	RMCCS STATE #1	<b>Client</b>	Schlumberger Carbon Services
<b>Field</b>	Wildcat	<b>SIR No.</b>	702223
<b>Engineer</b>	Dant Ryan/Ted Hansen	<b>Job Type</b>	9 5/8 Intermediate
<b>Country</b>	United States	<b>Job Date</b>	02-03-2012



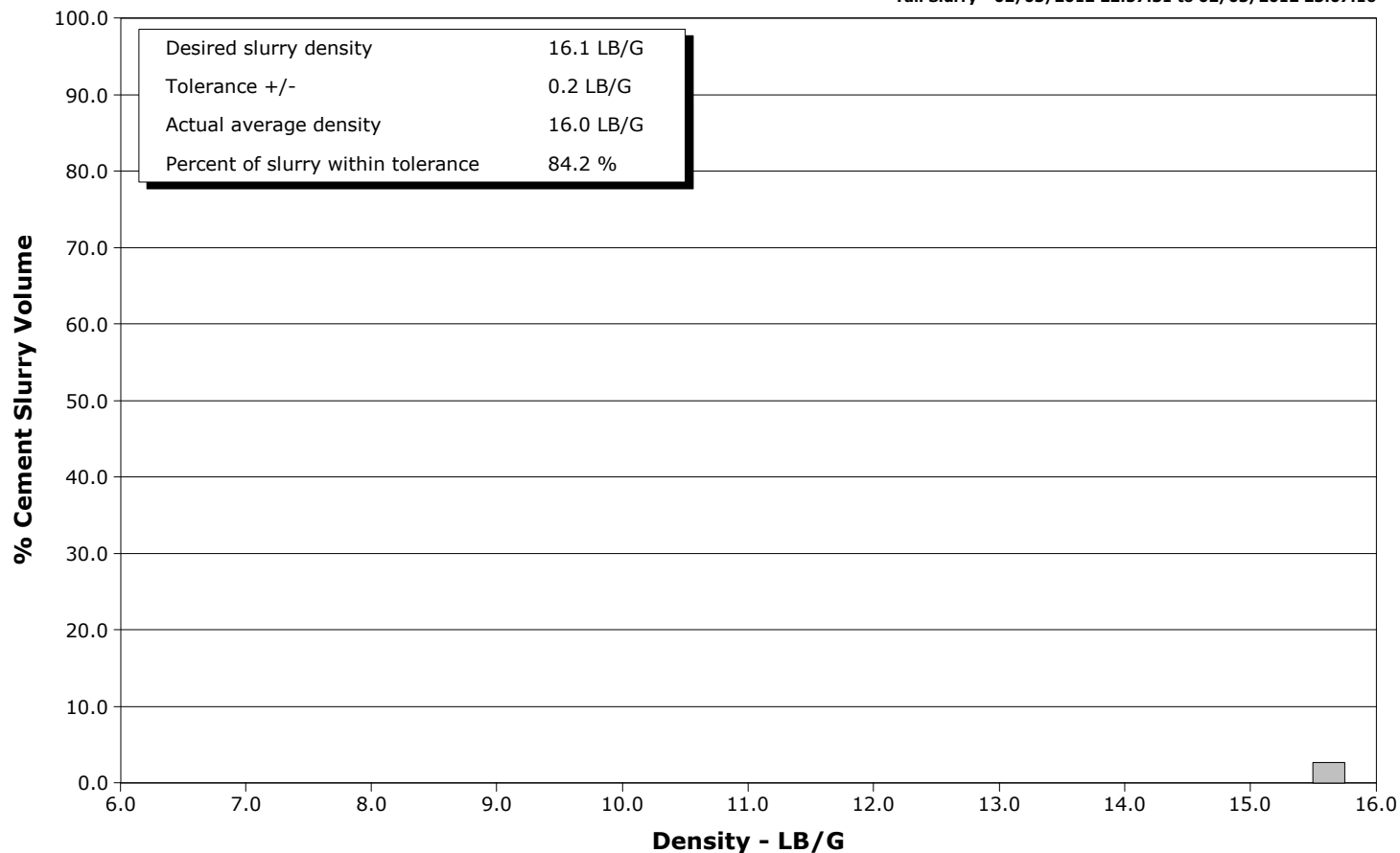
**Well** RMCCS STATE #1  
**Field** Wildcat  
**Engineer** Dant Ryan/Ted Hansen  
**Country** United States

**Client** Schlumberger Carbon Services  
**SIR No.** 702223  
**Job Type** 9 5/8 Intermediate  
**Job Date** 02-03-2012

**Lead Slurry - 02/03/2012 22:37:06 to 02/03/2012 22:50:46**



**Tail Slurry - 02/03/2012 22:57:31 to 02/03/2012 23:07:16**



				Customer Schlumberger Carbon Services			Job Number 702223										
Well RMCCS STATE #1 RMCCS STATE #1			Location (legal) Craig, Co			Schlumberger Location			Job Start Feb/03/2012								
Field Wildcat		Formation Name/Type Shale		Deviation deg		Bit Size 12.3 in		Well MD 5489.0 ft		Well TVD 5489.0 ft							
County Moffat		State/Province Colorado		BHP psi		BHST 164 degF		BHCT 114 degF		Pore Press. Gradient lb/gal							
Well Master		API/UWI															
Rig Name Patterson 166		Drilled For Other		Service Via Land		Casing/Liner											
						Depth, ft		Size, in		Weight, lb/ft		Grade		Thread			
Offshore Zone		Well Class New		Well Type Other		1393.0		13.4		54.5		J55		8RD			
						5489.0		9.6		40.0		K55		8RD			
Drilling Fluid Type Bentonite		Max. Density 8.60 lb/gal		Plastic Viscosity 2.000 cP		Tubing/Drill Pipe											
						T/D		Depth, ft		Size, in		Weight, lb/ft		Grade		Thread	
Service Line Cementing		Job Type 9 5/8 Intermediate															
Max. Allowed Tub. Press 3000 psi		Max. Allowed Ann. Press 1000 psi		WH Connection Single Cement head		Perforations/Open Hole											
						Top, ft		Bottom, ft		shot/ft		No. of Shots		Total Interval ft			
						ft		ft						Diameter in			
						ft		ft									
						Treat Down Casing		Displacement 401.0 bbl		Packer Type		Packer Depth ft					
						Tubing Vol. bbl		Casing Vol. 407.0 bbl		Annular Vol. 99.0 bbl		Openhole Vol. 726.0 bbl					
Casing/Tubing Secured <input checked="" type="checkbox"/>		1 Hole Vol. Circulated prior to Cement <input type="checkbox"/>				Casing Tools				Squeeze Job							
Lift Pressure 3338 psi						Shoe Type Float				Squeeze Type							
Pipe Rotated <input type="checkbox"/>		Pipe Reciprocated <input type="checkbox"/>				Shoe Depth 5489.0 ft				Tool Type							
No. Centralizers		Top Plugs 1		Bottom Plugs 1		Stage Tool Type				Tool Depth ft							
Cement Head Type Single						Stage Tool Depth ft				Tail Pipe Size in							
Job Scheduled For Feb/03/2012 17:00		Arrived on Location Feb/03/2012 17:00		Leave Location Feb/04/2012 02:00		Collar Type Float				Tail Pipe Depth ft							
						Collar Depth 5399.0 ft				Sqz. Total Vol. bbl							
Date	Time 24-hr clock	Treating Pressure PSI	Flow Rate B/M	Density LB/G	Volume BBL	Message											
02/03/2012	21:17:41	-1	0.0	0.42	0.0	Started Acquisition											
02/03/2012	21:17:45	-0	0.0	0.42	0.0	Start Job											
02/03/2012	21:17:47	-1	0.0	0.42	0.0	Take Water Samples											
02/03/2012	21:17:48	-1	0.0	0.42	0.0	Varrify Rates											
02/03/2012	21:19:21	4	0.5	0.46	0.0												
02/03/2012	21:21:01	2	0.4	8.44	0.8												
02/03/2012	21:22:41	34	2.1	8.43	3.2												
02/03/2012	21:24:21	94	3.0	8.43	8.6												
02/03/2012	21:26:01	141	0.0	8.44	13.5												
02/03/2012	21:27:41	15	0.0	8.43	13.5												
02/03/2012	21:29:21	3	0.0	8.43	13.5												
02/03/2012	21:31:01	-4	0.0	8.43	13.5												
02/03/2012	21:32:41	13	3.2	8.43	17.4												
02/03/2012	21:34:21	-3	0.0	8.43	17.7												
02/03/2012	21:36:01	-4	0.0	8.43	0.0												
02/03/2012	21:37:41	-4	0.0	8.43	0.0												
02/03/2012	21:39:21	-4	0.0	8.43	0.0												
02/03/2012	21:41:01	-4	0.0	8.43	0.0												
02/03/2012	21:42:41	-4	0.0	8.43	0.0												
02/03/2012	21:44:21	-4	0.0	8.43	0.0												
02/03/2012	21:46:01	-4	0.0	8.43	0.0												

Well			Field		Job Start		Customer		Job Number	
RMCCS STATE #1 RMCCS STATE #1			Wildcat		Feb/03/2012		Schlumberger Carbon Services		702223	
Date	Time 24-hr clock	Treating Pressure PSI	Flow Rate B/M	Density LB/G	Volume BBL	Message				
02/03/2012	21:49:21	-4	0.0	8.43	0.0					
02/03/2012	21:51:01	-4	0.0	8.43	0.0					
02/03/2012	21:52:41	-4	0.0	8.43	0.0					
02/03/2012	21:54:21	-3	0.0	8.43	0.0					
02/03/2012	21:56:01	-3	0.0	8.43	0.0					
02/03/2012	21:57:41	-4	0.0	8.43	0.0					
02/03/2012	21:59:21	-4	0.0	8.43	0.0					
02/03/2012	22:01:01	-4	0.0	8.43	0.0					
02/03/2012	22:02:41	-4	0.0	8.43	0.0					
02/03/2012	22:04:21	-4	0.0	8.43	0.0					
02/03/2012	22:06:01	-4	0.0	8.43	0.0					
02/03/2012	22:07:41	-7	0.0	8.44	0.0					
02/03/2012	22:09:21	-8	0.0	8.44	0.0					
02/03/2012	22:10:16	-7	0.0	8.44	0.0	Fill The Lines				
02/03/2012	22:10:51	-7	0.0	8.44	0.0	Pressure Test Lines				
02/03/2012	22:11:01	-8	0.0	8.44	0.0					
02/03/2012	22:11:02	-8	0.0	8.44	0.0	Low 500psi Test = Good				
02/03/2012	22:12:41	45	2.9	8.43	2.0					
02/03/2012	22:14:21	6	0.0	8.43	2.2					
02/03/2012	22:16:01	1453	0.0	8.43	2.2					
02/03/2012	22:17:41	3836	0.0	8.43	2.2					
02/03/2012	22:19:21	6	0.0	8.43	2.2					
02/03/2012	22:21:01	47	2.1	8.44	3.9					
02/03/2012	22:21:03	56	1.7	8.44	3.9	Start Pumping Wash				
02/03/2012	22:22:41	83	3.6	8.44	9.4					
02/03/2012	22:24:05	132	5.0	8.43	16.2	Pump 20bbls of CW7 Wash				
02/03/2012	22:24:06	132	5.0	8.43	16.3	No returns				
02/03/2012	22:24:21	129	5.0	8.43	17.5					
02/03/2012	22:25:32	120	5.0	8.43	23.4	End Wash				
02/03/2012	22:25:35	119	5.0	8.43	23.6	Start Pumping Spacer				
02/03/2012	22:25:37	120	5.0	8.43	23.8	Pump 30 bbls of Water Spacer				
02/03/2012	22:26:01	123	5.0	8.43	25.8					
02/03/2012	22:26:52	125	5.0	8.43	30.0	No Returns				
02/03/2012	22:27:41	111	5.0	8.43	34.1					
02/03/2012	22:29:21	112	5.0	8.43	42.4					
02/03/2012	22:31:01	122	5.0	8.43	50.7					
02/03/2012	22:31:35	-5	1.5	8.43	52.9	End Spacer				
02/03/2012	22:31:42	5	0.1	8.43	53.0	Drop Bottom Plug				
02/03/2012	22:31:45	1	0.0	8.43	53.0	Start Cement Slurry				
02/03/2012	22:31:54	-3	0.0	8.43	53.0	Start Mixing Scav Slurry				
02/03/2012	22:32:41	-6	0.0	8.43	53.0					
02/03/2012	22:34:21	-2	0.0	8.43	53.0					
02/03/2012	22:36:01	-1	0.1	8.58	53.0					
02/03/2012	22:37:06	110	2.6	11.92	54.1	End Scavenger Slurry				
02/03/2012	22:37:41	199	4.9	11.97	56.4					
02/03/2012	22:39:21	330	6.5	11.92	66.9					
02/03/2012	22:41:01	357	6.5	11.94	77.7	Reset Total, Vol = 95.39 bbl				
02/03/2012	22:41:18	325	6.5	11.94	79.6	Pump 252sks (80bbls) of 12.0 TXI Lead				
02/03/2012	22:41:56	338	6.5	11.94	83.7	Take Wet /Dry Samples				
02/03/2012	22:41:57	312	6.5	11.94	83.8	No Returns				
02/03/2012	22:42:41	326	6.5	11.95	88.6					
02/03/2012	22:44:21	342	6.5	11.97	99.4					
02/03/2012	22:45:18	340	6.5	11.97	105.6	Sample # 010844				
02/03/2012	22:46:01	334	6.5	11.98	110.3					

Well			Field		Job Start		Customer		Job Number	
RMCCS STATE #1 RMCCS STATE #1			Wildcat		Feb/03/2012		Schlumberger Carbon Services		702223	
Date	Time 24-hr clock	Treating Pressure PSI		Flow Rate B/M	Density LB/G		Volume BBL	Message		
02/03/2012	22:49:21	112		3.7	11.76		127.0			
02/03/2012	22:50:46	15		0.8	11.70		132.0	End Lead Slurry		
02/03/2012	22:50:50	0		0.1	11.70		132.0	Start Mixing Scav Slurry		
02/03/2012	22:50:54	-0		0.0	11.70		132.0	Shut Down Batch up Tail		
02/03/2012	22:51:01	-2		0.0	11.69		132.0			
02/03/2012	22:51:20	7		0.0	11.67		132.0	Reset Total, Vol = 54.32 bbl		
02/03/2012	22:52:41	-2		0.0	11.65		132.0			
02/03/2012	22:54:21	1		0.0	11.64		132.0			
02/03/2012	22:56:01	2		0.0	11.64		132.0			
02/03/2012	22:57:30	421		4.8	15.97		134.8	End Scavenger Slurry		
02/03/2012	22:57:31	421		4.8	15.98		134.9	Start Mixing Tail Slurry		
02/03/2012	22:57:33	447		5.0	15.98		135.1	Pump 250sks (50bbls) 16.1 G Tail		
02/03/2012	22:57:41	474		5.0	15.99		135.7			
02/03/2012	22:58:33	503		5.0	15.96		140.1	Take Wet/Dry Samples		
02/03/2012	22:59:21	489		5.0	15.97		144.1			
02/03/2012	22:59:33	456		5.0	15.99		145.1	Sample #'s 011223		
02/03/2012	23:01:01	503		5.0	16.03		152.4			
02/03/2012	23:02:41	497		5.0	16.01		160.7			
02/03/2012	23:02:46	503		5.0	16.00		161.1	No Returns		
02/03/2012	23:04:21	480		5.0	15.98		169.0			
02/03/2012	23:06:01	443		5.0	15.72		177.2			
02/03/2012	23:07:16	14		1.3	15.97		182.8	End Tail Slurry		
02/03/2012	23:07:18	14		0.4	15.97		182.8	End Cement Slurry		
02/03/2012	23:07:21	13		0.1	15.86		182.8	Reset Total, Vol = 50.81 bbl		
02/03/2012	23:07:23	11		0.1	15.86		182.8	Drop Top Plug		
02/03/2012	23:07:24	11		0.0	15.86		182.8	Start Displacement		
02/03/2012	23:07:41	6		0.0	15.84		182.9			
02/03/2012	23:09:21	3		0.0	15.83		182.9			
02/03/2012	23:11:01	11		0.0	15.84		182.9			
02/03/2012	23:12:41	-1		0.0	15.85		182.9			
02/03/2012	23:14:21	6		0.0	15.82		182.9			
02/03/2012	23:16:01	6		0.0	15.83		183.0			
02/03/2012	23:17:41	-1		0.0	15.82		183.0			
02/03/2012	23:19:21	2		0.0	15.55		183.0			
02/03/2012	23:21:01	-2		0.0	15.81		183.0			
02/03/2012	23:22:41	134		2.3	9.86		183.4			
02/03/2012	23:24:21	115		4.5	8.89		189.3			
02/03/2012	23:26:01	126		5.1	8.90		197.6			
02/03/2012	23:27:41	105		5.0	8.59		205.9			
02/03/2012	23:29:21	187		6.5	8.48		216.5			
02/03/2012	23:31:01	174		6.4	8.44		227.2			
02/03/2012	23:32:41	171		6.4	8.40		238.0			
02/03/2012	23:33:59	171		6.4	8.43		246.3	Displace 401bbls of Water		
02/03/2012	23:34:21	175		6.5	8.29		248.7			
02/03/2012	23:34:28	173		6.4	8.38		249.5	No Returns		
02/03/2012	23:36:01	152		6.3	8.43		259.4			
02/03/2012	23:37:41	171		6.4	8.16		270.2			
02/03/2012	23:39:21	171		6.4	8.38		280.9			
02/03/2012	23:41:01	150		6.4	8.43		291.6			
02/03/2012	23:42:41	142		6.0	8.48		301.9			
02/03/2012	23:44:21	147		6.0	8.44		311.8			
02/03/2012	23:46:01	145		6.0	8.43		321.8			
02/03/2012	23:47:41	176		6.1	8.42		331.8			
02/03/2012	23:49:21	162		6.4	8.44		342.4			

Well RMCCS STATE #1 RMCCS STATE #1			Field Wildcat		Job Start Feb/03/2012		Customer Schlumberger Carbon Services		Job Number 702223	
Date	Time 24-hr clock	Treating Pressure PSI		Flow Rate B/M	Density LB/G		Volume BBL		Message	
02/03/2012	23:52:41	154		6.4	8.44		363.7			
02/03/2012	23:54:21	148		6.4	8.44		374.3			
02/03/2012	23:56:01	148		6.4	8.45		385.0			
02/03/2012	23:57:41	178		6.4	8.45		395.6			
02/03/2012	23:59:21	156		6.4	8.45		406.3			
02/04/2012	00:01:01	155		6.4	8.45		416.9			
02/04/2012	00:02:41	158		6.4	8.45		427.5			
02/04/2012	00:04:21	157		6.4	8.45		438.2			
02/04/2012	00:06:01	158		6.4	8.45		448.8			
02/04/2012	00:07:41	172		6.4	8.45		459.4			
02/04/2012	00:09:21	166		6.4	8.45		470.1			
02/04/2012	00:11:01	153		6.4	8.45		480.7			
02/04/2012	00:12:41	165		6.4	8.45		491.3			
02/04/2012	00:14:21	162		6.4	8.46		502.0			
02/04/2012	00:16:01	163		6.4	8.46		512.6			
02/04/2012	00:17:41	162		6.4	8.46		523.2			
02/04/2012	00:19:21	156		6.4	8.45		533.9			
02/04/2012	00:21:01	168		6.4	8.46		544.5			
02/04/2012	00:22:41	212		6.4	8.46		555.1			
02/04/2012	00:24:21	343		6.3	8.46		565.7			
02/04/2012	00:26:01	951		6.3	8.46		576.2			
02/04/2012	00:27:41	857		3.4	8.46		585.7			
02/04/2012	00:29:21	901		3.4	8.46		591.4			
02/04/2012	00:31:01	845		3.4	8.46		597.1			
02/04/2012	00:31:32	1141		3.4	8.46		598.9		Bump Top Plug	
02/04/2012	00:31:33	1299		3.4	8.46		598.9		End Displacement	
02/04/2012	00:32:41	1501		0.0	8.46		599.8			
02/04/2012	00:34:21	1504		0.0	8.46		599.8			
02/04/2012	00:36:01	1505		0.0	8.46		599.8			
02/04/2012	00:37:41	1506		0.0	8.46		599.8			
02/04/2012	00:39:21	1508		0.0	8.46		599.8			
02/04/2012	00:41:01	762		0.0	8.46		599.8			
02/04/2012	00:42:01	3		0.0	8.46		599.8		Hold For 5 min.	
02/04/2012	00:42:41	1		0.0	8.46		599.8			
02/04/2012	00:42:56	1		0.0	8.46		599.8		2.5bbls Back	
02/04/2012	00:43:27	1		0.0	8.46		599.8		Floats Held	
02/04/2012	00:44:21	1		0.0	8.46		599.8			
02/04/2012	00:46:01	1		0.0	8.46		599.8			
02/04/2012	00:47:41	1		0.0	8.46		599.8			
02/04/2012	00:49:21	-0		0.0	8.46		599.8			
02/04/2012	00:51:01	-0		0.0	8.46		599.8			
02/04/2012	00:52:41	-3		0.0	8.46		599.8			
02/04/2012	00:54:21	-3		0.0	8.46		599.8			

<b>Well</b> RMCCS STATE #1 RMCCS STATE #1	<b>Field</b> Wildcat	<b>Job Start</b> Feb/03/2012	<b>Customer</b> Schlumberger Carbon Services	<b>Job Number</b> 702223
--	-------------------------	---------------------------------	---	-----------------------------

Post Job Summary

Average Pump Rates, bbl/min					Volume of Fluid Injected, bbl			
Slurry 4.9	N2	Mud	Maximum Rate 6.6		Total Slurry 617.5	Mud 0.0	Spacer 70.6	N2
Treating Pressure Summary, psi					Breakdown Fluid			
Maximum 3971	Final -3	Average 330	Bump Plug to 1500	Breakdown	Type	Volume bbl	Density lb/gal	
Avg. N2 Percent %		Designed Slurry Volume 130.0 bbl	Displacement 416.9 bbl	Mix Water Temp 57 degF	Cement Circulated to Surface? <input type="checkbox"/>	Volume bbl		
					Washed Thru Perfs <input type="checkbox"/>	To ft		
Customer or Authorized Representative Archie Fuller			Schlumberger Supervisor Dant Ryan/Ted Hansen			Circulation Lost <input checked="" type="checkbox"/>	Job Completed <input checked="" type="checkbox"/>	
						-	-	