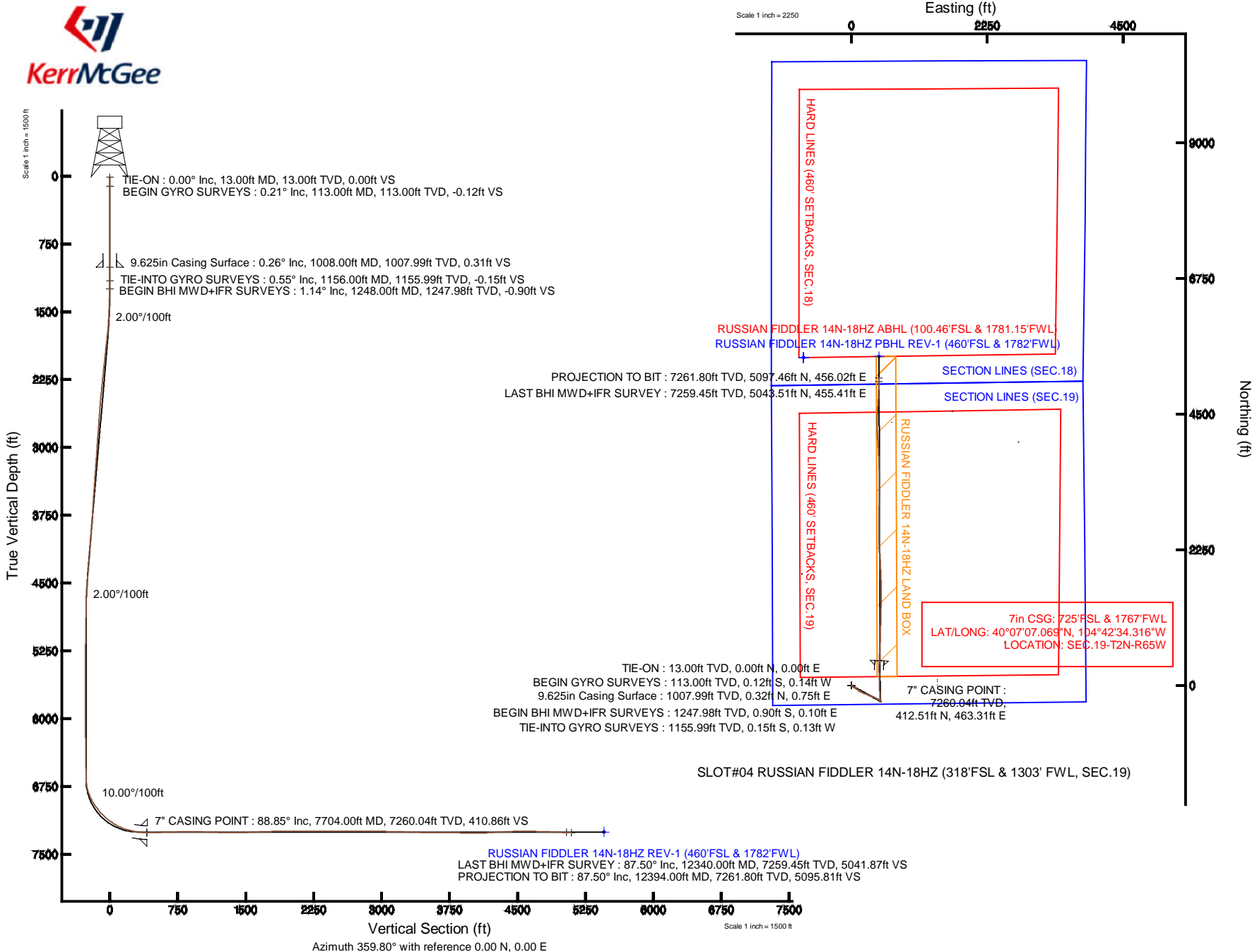


# KERR-MCGEE OIL & GAS ONSHORE LP

Location: COLORADO Slot: SLOT#04 RUSSIAN FIDDLER 14N-18HZ (318'FSL & 1303' FWL, SEC.19)  
 Field: WELD COUNTY (KERR MCGEE) Well: RUSSIAN FIDDLER 14N-18HZ  
 Facility: SEC.19-T2N-R65W Wellbore: RUSSIAN FIDDLER 14N-18HZ PWB

Plot reference wellpath is RUSSIAN FIDDLER 14N-18HZ (REV-A.0) PWP

True vertical depths are referenced to ENSIGN 145 (RKB)	Grid System: NAD83 / Lambert Colorado SP, Northern Zone (501), US feet
Measured depths are referenced to ENSIGN 145 (RKB)	North Reference: True north
ENSIGN 145 (RKB) to Mean Sea Level: 5013 feet	Scale: True distance
Mean Sea Level to Mud line (At Slot: SLOT#04 RUSSIAN FIDDLER 14N-18HZ (318'FSL & 1303' FWL, SEC.19)): 0 feet	Depths are in feet
Coordinates are in feet referenced to Slot	Created by: robide01 on 07/Jun/2013





# Actual Wellpath Report

## RUSSIAN FIDDLER 14N-18HZ AWP

Page 1 of 7



REFERENCE WELLPATH IDENTIFICATION			
Operator	KERR-MCGEE OIL & GAS ONSHORE LP	Slot	SLOT#04 RUSSIAN FIDDLER 14N-18HZ (318'FSL & 1303' FWL, SEC.19)
Area	COLORADO	Well	RUSSIAN FIDDLER 14N-18HZ
Field	WELD COUNTY (KERR MCGEE)	Wellbore	RUSSIAN FIDDLER 14N-18HZ AWB
Facility	SEC.19-T2N-R65W		

REPORT SETUP INFORMATION			
Projection System	NAD83 / Lambert Colorado SP, Northern Zone (501), US feet	Software System	WellArchitect® 4.0.0
North Reference	True	User	Robiale01
Scale	0.99996	Report Generated	07/Jun/2013 at 14:29
Convergence at slot	n/a	Database/Source file	WA_ANADARKO/RUSSIAN_FIDDLER_14N-18HZ_AWB.xml

WELLPATH LOCATION						
	Local coordinates		Grid coordinates		Geographic coordinates	
	North[ft]	East[ft]	Easting[US ft]	Northing[US ft]	Latitude	Longitude
Slot Location	-5007.86	-1194.78	3220604.61	1286629.78	40°07'02.993"N	104°42'40.280"W
Facility Reference Pt			3221754.51	1291647.91	40°07'52.481"N	104°42'24.901"W
Field Reference Pt			3197771.84	1268891.29	40°04'09.600"N	104°47'36.000"W

WELLPATH DATUM			
Calculation method	Minimum curvature	ENSIGN 145 (RKB) to Facility Vertical Datum	5013.00ft
Horizontal Reference Pt	Slot	ENSIGN 145 (RKB) to Mean Sea Level	5013.00ft
Vertical Reference Pt	ENSIGN 145 (RKB)	ENSIGN 145 (RKB) to Mud Line at Slot (SLOT#04 RUSSIAN FIDDLER 14N-18HZ (318'FSL & 1303' FWL, SEC.19))	5013.00ft
MD Reference Pt	ENSIGN 145 (RKB)	Section Origin	N 0.00, E 0.00 ft
Field Vertical Reference	Mean Sea Level	Section Azimuth	5.11°



# Actual Wellpath Report

## RUSSIAN FIDDLER 14N-18HZ AWP

Page 2 of 7



REFERENCE WELLPATH IDENTIFICATION			
Operator	KERR-MCGEE OIL & GAS ONSHORE LP	Slot	SLOT#04 RUSSIAN FIDDLER 14N-18HZ (318'FSL & 1303' FWL, SEC.19)
Area	COLORADO	Well	RUSSIAN FIDDLER 14N-18HZ
Field	WELD COUNTY (KERR MCGEE)	Wellbore	RUSSIAN FIDDLER 14N-18HZ AWB
Facility	SEC.19-T2N-R65W		

WELLPATH DATA (136 stations) † = interpolated/extrapolated station										
MD [ft]	Inclination [°]	Azimuth [°]	TVD [ft]	Vert Sect [ft]	North [ft]	East [ft]	Latitude	Longitude	DLS [°/100ft]	Comments
0.00†	0.000	229.970	0.00	0.00	0.00	0.00	40°07'02.993"N	104°42'40.280"W	0.00	
13.00	0.000	229.970	13.00	0.00	0.00	0.00	40°07'02.993"N	104°42'40.280"W	0.00	TIE-ON
113.00	0.210	229.970	113.00	-0.13	-0.12	-0.14	40°07'02.992"N	104°42'40.282"W	0.21	BEGIN GYRO SURVEYS
213.00	0.220	87.640	213.00	-0.23	-0.23	-0.09	40°07'02.991"N	104°42'40.281"W	0.41	
313.00	0.190	47.070	313.00	-0.09	-0.11	0.22	40°07'02.992"N	104°42'40.277"W	0.14	
413.00	0.090	157.320	413.00	-0.03	-0.07	0.38	40°07'02.992"N	104°42'40.275"W	0.24	
513.00	0.400	358.790	513.00	0.24	0.21	0.40	40°07'02.995"N	104°42'40.275"W	0.48	
613.00	0.420	83.880	613.00	0.66	0.60	0.76	40°07'02.999"N	104°42'40.270"W	0.55	
713.00	0.140	224.740	713.00	0.64	0.55	1.03	40°07'02.998"N	104°42'40.267"W	0.54	
813.00	0.320	332.250	812.99	0.78	0.71	0.82	40°07'03.000"N	104°42'40.269"W	0.39	
913.00	0.290	158.760	912.99	0.79	0.72	0.78	40°07'03.000"N	104°42'40.270"W	0.61	
1156.00	0.550	255.270	1155.99	-0.16	-0.15	-0.13	40°07'02.992"N	104°42'40.282"W	0.27	TIE-INTO GYRO SURVEYS
1248.00	1.140	134.630	1247.98	-0.89	-0.90	0.10	40°07'02.984"N	104°42'40.279"W	1.63	BEGIN BHI MWD+IFR SURVEYS
1340.00	2.560	131.380	1339.93	-2.69	-2.90	2.29	40°07'02.964"N	104°42'40.250"W	1.55	
1431.00	4.450	120.700	1430.76	-5.42	-6.05	6.85	40°07'02.933"N	104°42'40.192"W	2.19	
1523.00	5.740	116.220	1522.40	-8.61	-9.91	14.05	40°07'02.895"N	104°42'40.099"W	1.47	
1614.00	7.310	119.450	1612.80	-12.64	-14.76	23.17	40°07'02.847"N	104°42'39.982"W	1.77	
1705.00	9.050	125.570	1702.88	-18.65	-21.77	34.04	40°07'02.778"N	104°42'39.842"W	2.14	
1797.00	10.610	125.930	1793.52	-26.66	-30.95	46.78	40°07'02.687"N	104°42'39.678"W	1.70	
1888.00	10.790	123.710	1882.94	-35.03	-40.60	60.65	40°07'02.592"N	104°42'39.499"W	0.49	
1983.00	10.850	123.260	1976.25	-43.50	-50.43	75.53	40°07'02.495"N	104°42'39.308"W	0.11	
2078.00	10.640	125.550	2069.59	-52.17	-60.44	90.14	40°07'02.396"N	104°42'39.120"W	0.50	
2172.00	10.320	123.520	2162.02	-60.57	-70.13	104.22	40°07'02.300"N	104°42'38.939"W	0.52	
2267.00	10.220	125.210	2255.50	-68.84	-79.69	118.20	40°07'02.205"N	104°42'38.759"W	0.33	
2362.00	10.320	124.540	2348.97	-77.25	-89.38	132.09	40°07'02.110"N	104°42'38.580"W	0.16	
2457.00	9.670	121.960	2442.53	-85.03	-98.42	145.87	40°07'02.020"N	104°42'38.402"W	0.83	
2552.00	9.720	116.710	2536.18	-91.59	-106.25	159.81	40°07'01.943"N	104°42'38.223"W	0.93	
2647.00	9.310	116.250	2629.87	-97.31	-113.26	173.86	40°07'01.874"N	104°42'38.042"W	0.44	
2741.00	9.780	115.300	2722.57	-102.81	-120.03	187.90	40°07'01.807"N	104°42'37.861"W	0.53	
2836.00	10.140	115.140	2816.14	-108.46	-127.03	202.76	40°07'01.738"N	104°42'37.670"W	0.38	
2931.00	9.550	112.220	2909.74	-113.64	-133.56	217.63	40°07'01.673"N	104°42'37.479"W	0.81	
3026.00	10.280	109.630	3003.32	-118.08	-139.39	232.91	40°07'01.616"N	104°42'37.282"W	0.90	
3121.00	11.400	111.950	3096.62	-122.93	-145.75	249.60	40°07'01.553"N	104°42'37.067"W	1.27	
3216.00	11.410	110.950	3189.75	-128.21	-152.62	267.09	40°07'01.485"N	104°42'36.842"W	0.21	
3311.00	11.080	111.050	3282.92	-133.28	-159.26	284.38	40°07'01.419"N	104°42'36.620"W	0.35	
3406.00	10.640	112.260	3376.22	-138.38	-165.86	301.02	40°07'01.354"N	104°42'36.405"W	0.52	
3500.00	10.060	112.860	3468.69	-143.44	-172.34	316.61	40°07'01.290"N	104°42'36.205"W	0.63	
3595.00	9.910	112.030	3562.25	-148.35	-178.62	331.84	40°07'01.228"N	104°42'36.009"W	0.22	
3690.00	8.750	112.800	3655.99	-152.92	-184.49	346.08	40°07'01.170"N	104°42'35.825"W	1.23	
3785.00	9.620	114.750	3749.78	-157.78	-190.62	359.95	40°07'01.109"N	104°42'35.647"W	0.97	
3880.00	9.380	113.220	3843.47	-162.86	-196.99	374.27	40°07'01.046"N	104°42'35.463"W	0.37	
3974.00	9.940	113.850	3936.14	-167.85	-203.29	388.73	40°07'00.984"N	104°42'35.276"W	0.61	
4070.00	10.010	117.940	4030.69	-173.74	-210.55	403.68	40°07'00.912"N	104°42'35.084"W	0.74	
4164.00	9.720	115.080	4123.30	-179.62	-217.74	418.08	40°07'00.841"N	104°42'34.899"W	0.61	
4259.00	9.690	119.690	4216.94	-185.69	-225.10	432.29	40°07'00.768"N	104°42'34.716"W	0.82	



# Actual Wellpath Report

## RUSSIAN FIDDLER 14N-18HZ AWP

Page 3 of 7



REFERENCE WELLPATH IDENTIFICATION				
Operator	KERR-MCGEE OIL & GAS ONSHORE LP	Slot	SLOT#04 RUSSIAN FIDDLER 14N-18HZ (318'FSL & 1303' FWL, SEC.19)	
Area	COLORADO	Well	RUSSIAN FIDDLER 14N-18HZ	
Field	WELD COUNTY (KERR MCGEE)	Wellbore	RUSSIAN FIDDLER 14N-18HZ AWB	
Facility	SEC.19-T2N-R65W			

WELLPATH DATA (136 stations) † = interpolated/extrapolated station										
MD [ft]	Inclination [°]	Azimuth [°]	TVD [ft]	Vert Sect [ft]	North [ft]	East [ft]	Latitude	Longitude	DLS [°/100ft]	Comments
4354.00	9.780	118.790	4310.57	-192.25	-232.95	446.31	40°07'00.691"N	104°42'34.535"W	0.19	
4449.00	9.020	121.300	4404.30	-198.78	-240.70	459.75	40°07'00.614"N	104°42'34.362"W	0.91	
4543.00	7.290	120.360	4497.34	-204.58	-247.55	471.19	40°07'00.547"N	104°42'34.215"W	1.85	
4638.00	6.170	118.590	4591.69	-209.18	-253.04	480.87	40°07'00.492"N	104°42'34.090"W	1.20	
4734.00	4.830	114.080	4687.24	-212.55	-257.15	489.09	40°07'00.452"N	104°42'33.985"W	1.47	
4828.00	2.620	111.870	4781.04	-214.46	-259.57	494.70	40°07'00.428"N	104°42'33.912"W	2.36	
4923.00	1.170	131.780	4875.99	-215.66	-261.02	497.44	40°07'00.413"N	104°42'33.877"W	1.65	
5018.00	1.760	227.010	4970.97	-217.33	-262.66	497.09	40°07'00.397"N	104°42'33.882"W	2.32	
5207.00	1.720	245.780	5159.88	-220.88	-265.81	492.38	40°07'00.366"N	104°42'33.942"W	0.30	
5397.00	1.580	252.370	5349.80	-223.29	-267.77	487.29	40°07'00.347"N	104°42'34.008"W	0.12	
5586.00	1.430	264.760	5538.74	-224.72	-268.78	482.46	40°07'00.337"N	104°42'34.070"W	0.19	
5871.00	1.020	277.170	5823.67	-225.27	-268.78	476.40	40°07'00.337"N	104°42'34.148"W	0.17	
6060.00	0.990	290.360	6012.64	-224.78	-268.01	473.20	40°07'00.344"N	104°42'34.189"W	0.12	
6250.00	1.040	306.220	6202.61	-223.45	-266.42	470.27	40°07'00.360"N	104°42'34.227"W	0.15	
6440.00	0.930	16.930	6392.59	-221.05	-263.92	469.33	40°07'00.385"N	104°42'34.239"W	0.60	
6667.00	1.080	11.800	6619.56	-217.12	-260.06	470.30	40°07'00.423"N	104°42'34.226"W	0.08	
6724.00	1.790	347.190	6676.54	-215.74	-258.67	470.21	40°07'00.437"N	104°42'34.228"W	1.62	
6755.00	5.280	353.350	6707.48	-213.89	-256.78	469.94	40°07'00.455"N	104°42'34.231"W	11.31	
6787.00	9.080	356.850	6739.22	-209.94	-252.80	469.63	40°07'00.495"N	104°42'34.235"W	11.95	
6818.00	12.980	355.820	6769.64	-204.09	-246.88	469.24	40°07'00.553"N	104°42'34.240"W	12.60	
6865.00	17.620	359.310	6814.96	-191.79	-234.49	468.77	40°07'00.676"N	104°42'34.246"W	10.06	
6913.00	22.780	4.530	6860.00	-175.26	-217.95	469.42	40°07'00.839"N	104°42'34.238"W	11.38	
6961.00	28.480	2.340	6903.26	-154.52	-197.24	470.62	40°07'01.044"N	104°42'34.222"W	12.04	
7008.00	33.730	359.490	6943.49	-130.32	-172.97	470.96	40°07'01.284"N	104°42'34.218"W	11.60	
7056.00	36.500	358.230	6982.75	-102.88	-145.37	470.40	40°07'01.556"N	104°42'34.225"W	5.96	
7103.00	39.570	358.180	7019.76	-74.14	-116.43	469.50	40°07'01.842"N	104°42'34.237"W	6.53	
7151.00	43.430	357.860	7055.71	-42.58	-84.65	468.39	40°07'02.156"N	104°42'34.251"W	8.05	
7198.00	48.620	359.410	7088.33	-8.98	-50.85	467.61	40°07'02.490"N	104°42'34.261"W	11.29	
7246.00	51.800	359.650	7119.05	27.72	-13.97	467.31	40°07'02.855"N	104°42'34.265"W	6.64	
7293.00	55.460	358.440	7146.91	65.34	23.86	466.67	40°07'03.229"N	104°42'34.273"W	8.06	
7340.00	59.400	358.700	7172.21	104.69	63.45	465.68	40°07'03.620"N	104°42'34.286"W	8.40	
7387.00	63.680	357.600	7194.60	145.69	104.73	464.34	40°07'04.028"N	104°42'34.303"W	9.34	
7434.00	69.970	357.990	7213.09	188.52	147.89	462.68	40°07'04.454"N	104°42'34.324"W	13.40	
7482.00	74.440	359.160	7227.76	233.92	193.56	461.55	40°07'04.906"N	104°42'34.339"W	9.60	
7529.00	77.970	357.040	7238.96	279.21	239.17	460.03	40°07'05.356"N	104°42'34.359"W	8.69	
7577.00	80.210	0.840	7248.05	326.06	286.28	459.17	40°07'05.822"N	104°42'34.370"W	9.07	
7608.00	82.080	1.490	7252.82	356.62	316.91	459.79	40°07'06.125"N	104°42'34.362"W	6.38	
7640.00	84.330	2.080	7256.61	388.33	348.66	460.78	40°07'06.439"N	104°42'34.349"W	7.27	
7662.00	86.550	2.270	7258.36	410.24	370.58	461.61	40°07'06.655"N	104°42'34.338"W	10.13	
7704.00†	88.845	2.365	7260.04	452.15	412.51	463.31	40°07'07.069"N	104°42'34.316"W	5.47	7" CASING POINT
7733.00	90.430	2.430	7260.23	481.11	441.48	464.52	40°07'07.356"N	104°42'34.301"W	5.47	
7798.00	91.320	2.940	7259.24	546.05	506.40	467.57	40°07'07.997"N	104°42'34.262"W	1.58	
7893.00	91.790	2.740	7256.66	640.94	601.25	472.27	40°07'08.935"N	104°42'34.201"W	0.54	
7988.00	92.060	1.410	7253.47	735.75	696.13	475.71	40°07'09.872"N	104°42'34.157"W	1.43	
8083.00	91.690	1.220	7250.36	830.49	791.05	477.89	40°07'10.810"N	104°42'34.129"W	0.44	



# Actual Wellpath Report

## RUSSIAN FIDDLER 14N-18HZ AWP

Page 4 of 7



REFERENCE WELLPATH IDENTIFICATION			
Operator	KERR-MCGEE OIL & GAS ONSHORE LP	Slot	SLOT#04 RUSSIAN FIDDLER 14N-18HZ (318'FSL & 1303' FWL, SEC.19)
Area	COLORADO	Well	RUSSIAN FIDDLER 14N-18HZ
Field	WELD COUNTY (KERR MCGEE)	Wellbore	RUSSIAN FIDDLER 14N-18HZ AWB
Facility	SEC.19-T2N-R65W		

WELLPATH DATA (136 stations)										
MD [ft]	Inclination [°]	Azimuth [°]	TVD [ft]	Vert Sect [ft]	North [ft]	East [ft]	Latitude	Longitude	DLS [°/100ft]	Comments
8178.00	90.700	1.800	7248.38	925.28	886.00	480.39	40°07'11.749"N	104°42'34.096"W	1.21	
8273.00	87.560	1.380	7249.82	1020.08	980.94	483.03	40°07'12.687"N	104°42'34.062"W	3.33	
8367.00	87.450	1.260	7253.91	1113.78	1074.83	485.19	40°07'13.615"N	104°42'34.035"W	0.17	
8462.00	88.810	1.460	7257.01	1208.53	1169.75	487.44	40°07'14.553"N	104°42'34.005"W	1.45	
8557.00	88.850	1.720	7258.95	1303.33	1264.69	490.08	40°07'15.491"N	104°42'33.972"W	0.28	
8652.00	89.010	1.500	7260.72	1398.13	1359.64	492.75	40°07'16.429"N	104°42'33.937"W	0.29	
8747.00	91.810	359.910	7260.04	1492.84	1454.61	493.92	40°07'17.368"N	104°42'33.922"W	3.39	
8842.00	92.300	0.390	7256.64	1587.42	1549.55	494.16	40°07'18.306"N	104°42'33.919"W	0.72	
8936.00	92.400	359.110	7252.78	1680.93	1643.47	493.75	40°07'19.234"N	104°42'33.924"W	1.36	
9031.00	92.240	358.130	7248.94	1775.24	1738.36	491.47	40°07'20.172"N	104°42'33.954"W	1.04	
9126.00	90.920	357.620	7246.32	1869.44	1833.26	487.95	40°07'21.109"N	104°42'33.999"W	1.49	
9221.00	89.320	356.750	7246.12	1963.53	1928.14	483.28	40°07'22.047"N	104°42'34.059"W	1.92	
9316.00	90.060	357.990	7246.63	2057.66	2023.04	478.92	40°07'22.985"N	104°42'34.115"W	1.52	
9411.00	89.590	356.000	7246.92	2151.71	2117.90	473.94	40°07'23.922"N	104°42'34.179"W	2.15	
9506.00	90.800	356.490	7246.60	2245.57	2212.69	467.72	40°07'24.859"N	104°42'34.259"W	1.37	
9600.00	89.870	356.970	7246.05	2338.56	2306.54	462.36	40°07'25.786"N	104°42'34.328"W	1.11	
9695.00	90.890	358.540	7245.42	2432.77	2401.46	458.64	40°07'26.724"N	104°42'34.376"W	1.97	
9790.00	89.590	359.340	7245.02	2527.22	2496.44	456.88	40°07'27.663"N	104°42'34.399"W	1.61	
9885.00	88.760	359.470	7246.39	2621.74	2591.42	455.89	40°07'28.602"N	104°42'34.411"W	0.88	
9979.00	90.120	359.400	7247.31	2715.27	2685.41	454.97	40°07'29.531"N	104°42'34.423"W	1.45	
10074.00	90.390	1.400	7246.89	2809.94	2780.40	455.63	40°07'30.469"N	104°42'34.415"W	2.12	
10169.00	89.440	2.010	7247.03	2904.77	2875.36	458.46	40°07'31.408"N	104°42'34.378"W	1.19	
10264.00	90.580	0.900	7247.01	2999.58	2970.33	460.87	40°07'32.346"N	104°42'34.347"W	1.67	
10359.00	88.640	1.610	7247.66	3094.35	3065.30	462.95	40°07'33.285"N	104°42'34.320"W	2.17	
10454.00	88.580	0.790	7249.96	3189.10	3160.25	464.94	40°07'34.223"N	104°42'34.295"W	0.87	
10548.00	88.300	0.880	7252.52	3282.81	3254.20	466.31	40°07'35.151"N	104°42'34.277"W	0.31	
10643.00	88.180	359.830	7255.44	3377.43	3349.15	466.90	40°07'36.090"N	104°42'34.269"W	1.11	
10738.00	88.920	358.470	7257.84	3471.89	3444.11	465.49	40°07'37.028"N	104°42'34.288"W	1.63	
10833.00	89.500	357.889	7259.15	3566.18	3539.05	462.47	40°07'37.966"N	104°42'34.326"W	0.86	
10928.00	90.270	358.500	7259.34	3660.49	3634.00	459.48	40°07'38.905"N	104°42'34.365"W	1.03	
11021.00	89.630	358.080	7259.42	3752.83	3726.96	456.70	40°07'39.823"N	104°42'34.401"W	0.82	
11116.00	88.400	357.450	7261.06	3847.03	3821.87	453.00	40°07'40.761"N	104°42'34.448"W	1.45	
11211.00	88.670	356.360	7263.49	3941.03	3916.70	447.87	40°07'41.698"N	104°42'34.514"W	1.18	
11306.00	89.410	356.350	7265.08	4034.91	4011.49	441.83	40°07'42.635"N	104°42'34.592"W	0.78	
11401.00	91.600	355.690	7264.24	4128.70	4106.26	435.24	40°07'43.571"N	104°42'34.677"W	2.41	
11496.00	93.300	356.630	7260.18	4222.46	4200.95	428.88	40°07'44.507"N	104°42'34.759"W	2.04	
11590.00	93.030	359.370	7254.99	4315.58	4294.74	425.61	40°07'45.434"N	104°42'34.801"W	2.92	
11686.00	92.950	1.140	7249.98	4411.10	4390.61	426.03	40°07'46.381"N	104°42'34.795"W	1.84	
11781.00	91.230	3.620	7246.52	4505.92	4485.45	429.98	40°07'47.319"N	104°42'34.744"W	3.18	
11876.00	89.930	3.430	7245.55	4600.88	4580.26	435.82	40°07'48.256"N	104°42'34.669"W	1.38	
11971.00	88.670	3.230	7246.72	4695.82	4675.09	441.34	40°07'49.193"N	104°42'34.598"W	1.34	
12066.00	88.200	3.830	7249.31	4790.75	4769.88	447.18	40°07'50.129"N	104°42'34.523"W	0.80	
12161.00	87.900	2.280	7252.54	4885.63	4864.68	452.24	40°07'51.066"N	104°42'34.458"W	1.66	
12255.00	87.870	0.530	7256.01	4979.37	4958.59	454.55	40°07'51.994"N	104°42'34.428"W	1.86	
12340.00	87.500	0.640	7259.45	5064.03	5043.51	455.41	40°07'52.834"N	104°42'34.417"W	0.45	LAST BHI MWD+IFR SURVEY



# Actual Wellpath Report

## RUSSIAN FIDDLER 14N-18HZ AWP

Page 5 of 7



REFERENCE WELLPATH IDENTIFICATION			
Operator	KERR-MCGEE OIL & GAS ONSHORE LP	Slot	SLOT#04 RUSSIAN FIDDLER 14N-18HZ (318'FSL & 1303' FWL, SEC.19)
Area	COLORADO	Well	RUSSIAN FIDDLER 14N-18HZ
Field	WELD COUNTY (KERR MCGEE)	Wellbore	RUSSIAN FIDDLER 14N-18HZ AWB
Facility	SEC.19-T2N-R65W		

WELLPATH DATA (136 stations)										
MD [ft]	Inclination [°]	Azimuth [°]	TVD [ft]	Vert Sect [ft]	North [ft]	East [ft]	Latitude	Longitude	DLS [°/100ft]	Comments
12394.00	87.500	0.640	7261.80	5117.82	5097.46	456.02	40°07'53.367"N	104°42'34.409"W	0.00	PROJECTION TO BIT

HOLE & CASING SECTIONS - Ref Wellbore: RUSSIAN FIDDLER 14N-18HZ AWB      Ref Wellpath: RUSSIAN FIDDLER 14N-18HZ AWP									
String/Diameter	Start MD [ft]	End MD [ft]	Interval [ft]	Start TVD [ft]	End TVD [ft]	Start N/S [ft]	Start E/W [ft]	End N/S [ft]	End E/W [ft]
13.5in Open Hole	13.00	1008.00	995.00	13.00	1007.99	0.00	0.00	0.32	0.75
9.625in Casing Surface	13.00	1008.00	995.00	13.00	1007.99	0.00	0.00	0.32	0.75
8.75in Open Hole	1008.00	7716.00	6708.00	1007.99	7260.22	0.32	0.75	424.50	463.81
7in Casing Intermediate	13.00	7704.00	7691.00	13.00	7260.04	0.00	0.00	412.51	463.31
6in Open Hole	7716.00	12394.00	4678.00	7260.22	7261.80	424.50	463.81	5097.46	456.02





# Actual Wellpath Report

## RUSSIAN FIDDLER 14N-18HZ AWP

Page 6 of 7



REFERENCE WELLPATH IDENTIFICATION			
Operator	KERR-MCGEE OIL & GAS ONSHORE LP	Slot	SLOT#04 RUSSIAN FIDDLER 14N-18HZ (318'FSL & 1303' FWL, SEC.19)
Area	COLORADO	Well	RUSSIAN FIDDLER 14N-18HZ
Field	WELD COUNTY (KERR MCGEE)	Wellbore	RUSSIAN FIDDLER 14N-18HZ AWB
Facility	SEC.19-T2N-R65W		

TARGETS									
Name	MD [ft]	TVD [ft]	North [ft]	East [ft]	Grid East [US ft]	Grid North [US ft]	Latitude	Longitude	Shape
RUSSIAN FIDDLER 14N-18HZ LAND BOX		0.00	5438.93	-789.93	3219766.37	1292061.24	40°07'56.741"N	104°42'50.450"W	polygon
RUSSIAN FIDDLER 5 PAD SECTION LINES (SEC.18)		0.00	5438.91	-789.93	3219766.37	1292061.22	40°07'56.741"N	104°42'50.450"W	polygon
RUSSIAN FIDDLER 5 PAD SECTION LINES (SEC.19)		0.00	5438.93	-789.93	3219766.37	1292061.24	40°07'56.741"N	104°42'50.450"W	polygon
DECHANT 31-19 150' RADIUS		6954.48	4630.89	1577.16	3222140.45	1291274.32	40°07'48.755"N	104°42'19.975"W	circle
RUSSIAN FIDDLER 14N-18HZ REV-1 (460'FSL & 1782'FWL)		7253.00	5457.14	456.87	3221012.90	1292090.54	40°07'56.921"N	104°42'34.398"W	point
DECHANT X 19-5 150' RADIUS		7258.00	3105.52	-661.13	3219915.91	1289729.16	40°07'33.682"N	104°42'48.791"W	circle
HARRIS RED X19-2J 150' RADIUS		7258.00	3348.88	212.53	3220787.33	1289980.28	40°07'36.087"N	104°42'37.544"W	circle
DECHANT X 19-3 150' RADIUS		7258.34	4405.31	621.99	3221187.36	1291040.27	40°07'46.527"N	104°42'32.273"W	circle
DECHANT 32-19 150' RADIUS		7298.51	2941.30	1773.80	3222352.10	1289586.62	40°07'32.059"N	104°42'17.445"W	circle
RUSSIAN FIDDLER 5 PAD HARD LINES (460' SETBACKS, SEC.18)		7408.00	5438.93	-789.93	3219766.37	1292061.24	40°07'56.741"N	104°42'50.450"W	polygon
RUSSIAN FIDDLER 5 PAD HARD LINES (460' SETBACKS, SEC.19)		7408.00	5438.93	-789.93	3219766.37	1292061.24	40°07'56.741"N	104°42'50.450"W	polygon

WELLPATH COMPOSITION - Ref Wellbore: RUSSIAN FIDDLER 14N-18HZ AWB    Ref Wellpath: RUSSIAN FIDDLER 14N-18HZ AWP				
Start MD [ft]	End MD [ft]	Positional Uncertainty Model	Log Name/Comment	Wellbore
13.00	913.00	Generic gyro - continuous (Standard)	MS ENERGY SERVICES GYRO <113-913>	RUSSIAN FIDDLER 14N-18HZ AWB
913.00	7662.00	NaviTrak (MAGCORR,IFR)	BHI MWD+IFR SURVEYS 8 3/4" HOLE <1156-7762>	RUSSIAN FIDDLER 14N-18HZ AWB
7662.00	12340.00	OnTrak (MAGCORR,IFR)	BHI MWD+IFR SURVEYS 6 1/8" HOLE <7733-12340>	RUSSIAN FIDDLER 14N-18HZ AWB
12340.00	12394.00	Blind Drilling (std)	Projection to bit	RUSSIAN FIDDLER 14N-18HZ AWB



# Actual Wellpath Report

RUSSIAN FIDDLER 14N-18HZ AWP

Page 7 of 7



REFERENCE WELLPATH IDENTIFICATION				
Operator	KERR-MCGEE OIL & GAS ONSHORE LP	Slot	SLOT#04 RUSSIAN FIDDLER 14N-18HZ (318'FSL & 1303' FWL, SEC.19)	
Area	COLORADO	Well	RUSSIAN FIDDLER 14N-18HZ	
Field	WELD COUNTY (KERR MCGEE)	Wellbore	RUSSIAN FIDDLER 14N-18HZ AWB	
Facility	SEC.19-T2N-R65W			

WELLPATH COMMENTS				
MD [ft]	Inclination [°]	Azimuth [°]	TVD [ft]	Comment
13.00	0.000	229.970	13.00	TIE-ON
113.00	0.210	229.970	113.00	BEGIN GYRO SURVEYS
1156.00	0.550	255.270	1155.99	TIE-INTO GYRO SURVEYS
1248.00	1.140	134.630	1247.98	BEGIN BHI MWD+IFR SURVEYS
7704.00	88.845	2.365	7260.04	7" CASING POINT
12340.00	87.500	0.640	7259.45	LAST BHI MWD+IFR SURVEY
12394.00	87.500	0.640	7261.80	PROJECTION TO BIT