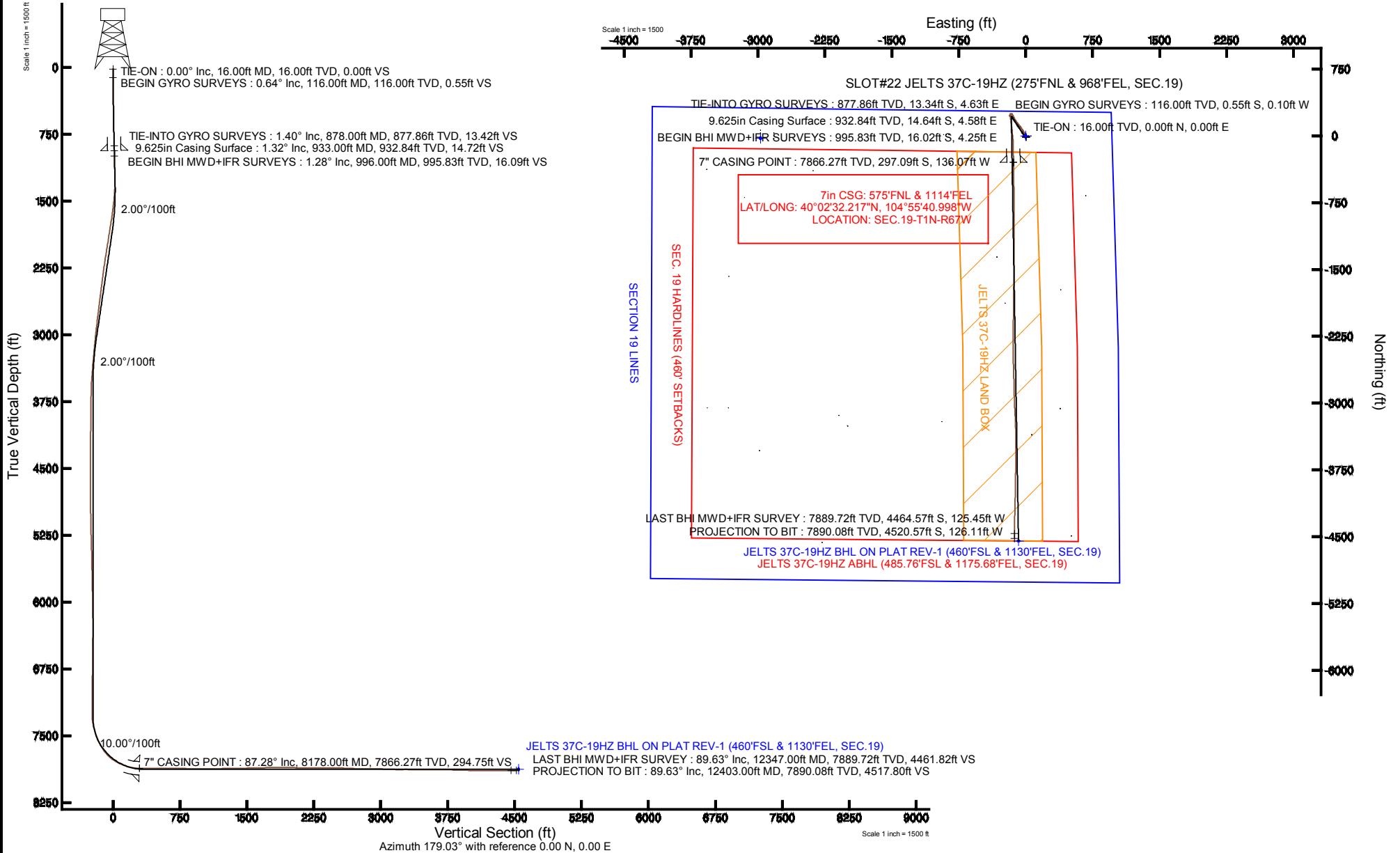


KERR-MCGEE OIL & GAS ONSHORE LP

Location: COLORADO Slot: SLOT#22 JELTS 37C-19HZ (275'FNL & 968'FEL, SEC.19)
 Field: WELD COUNTY (KERR MCGEE) Well: JELTS 37C-19HZ
 Facility: SEC.19-T1N-R67W Wellbore: JELTS 37C-19HZ PWB

Plot reference wellpath is JELTS 37C-19HZ (REV-A.1) PWP

True vertical depths are referenced to XTREME 24 (RKB)	Grid System: NAD83 / Lambert Colorado SP, Northern Zone (501), US feet
Measured depths are referenced to XTREME 24 (RKB)	North Reference: True north
XTREME 24 (RKB) to Mean Sea Level: 5174 feet	Scale: True distance
Mean Sea Level to Mud line (At Slot: SLOT#22 JELTS 37C-19HZ (275'FNL & 968'FEL, SEC.19)): 0 feet	Depths are in feet
Coordinates are in feet referenced to Slot	Created by: robiele01 on 11/Jul/2013





Actual Wellpath Report

JELTS 37C-19HZ AWP

Page 1 of 6



REFERENCE WELLPATH IDENTIFICATION

Operator	KERR-MCGEE OIL & GAS ONSHORE LP	Slot	SLOT#22 JELTS 37C-19HZ (275'FNL & 968'FEL, SEC.19)
Area	COLORADO	Well	JELTS 37C-19HZ
Field	WELD COUNTY (KERR MCGEE)	Wellbore	JELTS 37C-19HZ AWB
Facility	SEC.19-T1N-R67W		

REPORT SETUP INFORMATION

Projection System	NAD83 / Lambert Colorado SP, Northern Zone (501), US feet	Software System	WellArchitect® 4.0.0
North Reference	True	User	Robiale01
Scale	0.999963	Report Generated	11/Jul/2013 at 15:43
Convergence at slot	n/a	Database/Source file	WA_ANADARKO/JELTS_37C-19HZ_AWB.xml

WELLPATH LOCATION

	Local coordinates		Grid coordinates		Geographic coordinates	
	North[ft]	East[ft]	Easting[US ft]	Northing[US ft]	Latitude	Longitude
Slot Location	26.69	2972.77	3160266.17	1259063.65	40°02'35.153"N	104°55'39.248"W
Facility Reference Pt			3157293.75	1259018.13	40°02'34.891"N	104°56'17.471"W
Field Reference Pt			3197771.84	1268891.29	40°04'09.600"N	104°47'36.000"W

WELLPATH DATUM

Calculation method	Minimum curvature	XTREME 24 (RKB) to Facility Vertical Datum	5174.00ft
Horizontal Reference Pt	Slot	XTREME 24 (RKB) to Mean Sea Level	5174.00ft
Vertical Reference Pt	XTREME 24 (RKB)	XTREME 24 (RKB) to Mud Line at Slot (SLOT#22 JELTS 37C-19HZ (275'FNL & 968'FEL, SEC.19))	5174.00ft
MD Reference Pt	XTREME 24 (RKB)	Section Origin	N 0.00, E 0.00 ft
Field Vertical Reference	Mean Sea Level	Section Azimuth	181.60°



Actual Wellpath Report

JELTS 37C-19HZ AWP

Page 2 of 6



REFERENCE WELLPATH IDENTIFICATION				
Operator	KERR-MCGEE OIL & GAS ONSHORE LP		Slot	SLOT#22 JELTS 37C-19HZ (275'FNL & 968'FEL, SEC.19)
Area	COLORADO		Well	JELTS 37C-19HZ
Field	WELD COUNTY (KERR MCGEE)		Wellbore	JELTS 37C-19HZ AWB
Facility	SEC.19-T1N-R67W			

WELLPATH DATA (130 stations) † = interpolated/extrapolated station										
MD [ft]	Inclination [°]	Azimuth [°]	TVD [ft]	Vert Sect [ft]	North [ft]	East [ft]	Latitude	Longitude	DLS [°/100ft]	Comments
0.00†	0.000	190.350	0.00	0.00	0.00	0.00	40°02'35.153"N	104°55'39.248"W	0.00	
16.00	0.000	190.350	16.00	0.00	0.00	0.00	40°02'35.153"N	104°55'39.248"W	0.00	TIE-ON
116.00	0.640	190.350	116.00	0.55	-0.55	-0.10	40°02'35.148"N	104°55'39.249"W	0.64	BEGIN GYRO SURVEYS
216.00	0.510	156.640	215.99	1.51	-1.51	-0.02	40°02'35.138"N	104°55'39.248"W	0.36	
316.00	0.970	149.860	315.98	2.63	-2.65	0.58	40°02'35.127"N	104°55'39.241"W	0.47	
416.00	1.260	152.470	415.97	4.31	-4.35	1.51	40°02'35.110"N	104°55'39.229"W	0.29	
516.00	1.110	136.170	515.94	5.95	-6.03	2.69	40°02'35.093"N	104°55'39.213"W	0.37	
616.00	0.860	155.830	615.93	7.31	-7.41	3.67	40°02'35.080"N	104°55'39.201"W	0.42	
716.00	1.540	166.260	715.91	9.28	-9.40	4.29	40°02'35.060"N	104°55'39.193"W	0.71	
816.00	1.330	180.460	815.88	11.73	-11.87	4.60	40°02'35.036"N	104°55'39.189"W	0.41	
878.00	1.400	177.350	877.86	13.21	-13.34	4.63	40°02'35.021"N	104°55'39.188"W	0.16	TIE-INTO GYRO SURVEYS
996.00	1.280	200.100	995.83	15.90	-16.02	4.25	40°02'34.995"N	104°55'39.193"W	0.46	BEGIN BHI MWD+IFR SURVEYS
1185.00	1.650	186.930	1184.77	20.61	-20.71	3.19	40°02'34.948"N	104°55'39.207"W	0.26	
1279.00	1.210	290.400	1278.75	21.64	-21.70	2.10	40°02'34.939"N	104°55'39.221"W	2.41	
1373.00	3.020	330.730	1372.68	19.19	-19.20	-0.04	40°02'34.963"N	104°55'39.249"W	2.38	
1467.00	5.190	336.610	1466.44	13.21	-13.13	-2.94	40°02'35.023"N	104°55'39.286"W	2.35	
1561.00	6.890	351.460	1559.92	3.81	-3.65	-5.47	40°02'35.117"N	104°55'39.318"W	2.44	
1656.00	8.780	349.980	1654.03	-8.91	9.12	-7.57	40°02'35.243"N	104°55'39.345"W	2.00	
1750.00	9.340	337.910	1746.86	-22.92	23.26	-11.69	40°02'35.383"N	104°55'39.398"W	2.10	
1844.00	10.320	328.900	1839.49	-36.99	37.53	-18.91	40°02'35.524"N	104°55'39.491"W	1.94	
1938.00	9.750	328.100	1932.05	-50.72	51.50	-27.46	40°02'35.662"N	104°55'39.601"W	0.62	
2033.00	11.170	327.270	2025.47	-65.02	66.07	-36.69	40°02'35.806"N	104°55'39.720"W	1.50	
2124.00	10.440	324.830	2114.85	-78.91	80.23	-46.21	40°02'35.946"N	104°55'39.842"W	0.95	
2215.00	10.230	324.380	2204.38	-91.95	93.54	-55.66	40°02'36.077"N	104°55'39.964"W	0.25	
2307.00	9.790	322.410	2294.98	-104.52	106.37	-65.19	40°02'36.204"N	104°55'40.086"W	0.61	
2399.00	9.120	322.780	2385.73	-116.26	118.38	-74.37	40°02'36.323"N	104°55'40.204"W	0.73	
2489.00	7.990	324.540	2474.72	-126.81	129.15	-82.32	40°02'36.429"N	104°55'40.306"W	1.29	
2581.00	8.370	322.400	2565.79	-137.10	139.67	-90.11	40°02'36.533"N	104°55'40.407"W	0.53	
2672.00	9.540	323.660	2655.68	-148.18	150.99	-98.62	40°02'36.645"N	104°55'40.516"W	1.30	
2763.00	8.710	323.130	2745.52	-159.52	162.58	-107.22	40°02'36.760"N	104°55'40.627"W	0.92	
2854.00	7.850	327.600	2835.58	-170.07	173.34	-114.69	40°02'36.866"N	104°55'40.723"W	1.18	
2945.00	7.290	328.850	2925.78	-180.08	183.52	-121.00	40°02'36.967"N	104°55'40.804"W	0.64	
3037.00	6.790	329.580	3017.09	-189.60	193.21	-126.78	40°02'37.062"N	104°55'40.878"W	0.55	
3128.00	6.420	331.130	3107.49	-198.55	202.30	-131.96	40°02'37.152"N	104°55'40.945"W	0.45	
3220.00	5.890	333.040	3198.95	-207.12	211.02	-136.58	40°02'37.238"N	104°55'41.004"W	0.62	
3311.00	5.360	334.070	3289.52	-214.99	219.00	-140.56	40°02'37.317"N	104°55'41.055"W	0.59	
3403.00	5.120	331.480	3381.13	-222.36	226.47	-144.40	40°02'37.391"N	104°55'41.105"W	0.37	
3494.00	4.490	345.380	3471.81	-229.29	233.49	-147.23	40°02'37.460"N	104°55'41.141"W	1.45	
3586.00	3.230	333.480	3563.61	-235.03	239.29	-149.30	40°02'37.518"N	104°55'41.168"W	1.62	
3679.00	1.620	298.660	3656.52	-237.94	242.26	-151.62	40°02'37.547"N	104°55'41.198"W	2.27	
3866.00	0.990	312.310	3843.47	-240.20	244.62	-155.14	40°02'37.570"N	104°55'41.243"W	0.37	
4332.00	1.160	300.960	4309.39	-245.14	249.76	-162.16	40°02'37.621"N	104°55'41.333"W	0.06	
4425.00	0.800	216.840	4402.38	-245.07	249.72	-163.36	40°02'37.621"N	104°55'41.348"W	1.44	
4612.00	0.960	260.240	4589.36	-243.69	248.41	-165.68	40°02'37.608"N	104°55'41.378"W	0.36	
4790.00	1.220	305.780	4767.33	-244.46	249.27	-168.69	40°02'37.616"N	104°55'41.417"W	0.49	



Actual Wellpath Report

JELTS 37C-19HZ AWP

Page 3 of 6



REFERENCE WELLPATH IDENTIFICATION				
Operator	KERR-MCGEE OIL & GAS ONSHORE LP		Slot	SLOT#22 JELTS 37C-19HZ (275'FNL & 968'FEL, SEC.19)
Area	COLORADO		Well	JELTS 37C-19HZ
Field	WELD COUNTY (KERR MCGEE)		Wellbore	JELTS 37C-19HZ AWB
Facility	SEC.19-T1N-R67W			

WELLPATH DATA (130 stations) † = interpolated/extrapolated station										
MD [ft]	Inclination [°]	Azimuth [°]	TVD [ft]	Vert Sect [ft]	North [ft]	East [ft]	Latitude	Longitude	DLS [°/100ft]	Comments
4876.00	0.920	250.900	4853.32	-244.74	249.58	-170.09	40°02'37.619"N	104°55'41.435"W	1.19	
4961.00	1.050	184.300	4938.31	-243.72	248.58	-170.79	40°02'37.609"N	104°55'41.444"W	1.28	
5131.00	1.240	164.500	5108.28	-240.40	245.25	-170.41	40°02'37.577"N	104°55'41.439"W	0.26	
5302.00	1.780	204.300	5279.22	-236.18	241.05	-171.01	40°02'37.535"N	104°55'41.447"W	0.67	
5642.00	1.480	210.930	5619.08	-227.48	232.47	-175.44	40°02'37.450"N	104°55'41.504"W	0.10	
5983.00	1.690	230.150	5959.96	-220.32	225.47	-181.57	40°02'37.381"N	104°55'41.583"W	0.17	
6068.00	1.200	160.320	6044.93	-218.66	223.83	-182.23	40°02'37.365"N	104°55'41.591"W	2.00	
6153.00	1.670	111.500	6129.91	-217.41	222.53	-180.78	40°02'37.352"N	104°55'41.572"W	1.48	
6494.00	1.200	53.760	6470.82	-217.91	222.82	-173.27	40°02'37.355"N	104°55'41.476"W	0.42	
6834.00	0.690	357.890	6810.78	-222.13	226.97	-170.48	40°02'37.396"N	104°55'41.440"W	0.29	
7175.00	0.720	313.160	7151.75	-225.60	230.49	-172.12	40°02'37.431"N	104°55'41.461"W	0.16	
7260.00	0.710	303.540	7236.75	-226.24	231.15	-172.94	40°02'37.437"N	104°55'41.472"W	0.14	
7303.00	1.540	186.640	7279.74	-225.80	230.72	-173.23	40°02'37.433"N	104°55'41.475"W	4.57	
7345.00	5.910	180.640	7321.64	-223.08	228.00	-173.32	40°02'37.406"N	104°55'41.477"W	10.43	
7388.00	10.900	175.820	7364.17	-216.81	221.72	-173.05	40°02'37.344"N	104°55'41.473"W	11.71	
7431.00	13.660	171.500	7406.18	-207.77	212.65	-172.00	40°02'37.254"N	104°55'41.460"W	6.76	
7473.00	16.450	170.870	7446.74	-197.04	201.87	-170.33	40°02'37.148"N	104°55'41.438"W	6.65	
7516.00	19.580	171.450	7487.62	-183.96	188.73	-168.29	40°02'37.018"N	104°55'41.412"W	7.29	
7558.00	21.870	172.640	7526.90	-169.31	174.01	-166.24	40°02'36.873"N	104°55'41.385"W	5.54	
7601.00	25.200	174.530	7566.32	-152.30	156.95	-164.34	40°02'36.704"N	104°55'41.361"W	7.94	
7644.00	27.760	172.540	7604.81	-133.33	137.90	-162.17	40°02'36.516"N	104°55'41.333"W	6.30	
7686.00	31.980	171.310	7641.22	-112.72	117.20	-159.22	40°02'36.311"N	104°55'41.295"W	10.15	
7729.00	36.930	171.920	7676.67	-88.76	93.14	-155.68	40°02'36.073"N	104°55'41.250"W	11.54	
7771.00	42.510	172.650	7708.96	-62.29	66.55	-152.09	40°02'35.811"N	104°55'41.203"W	13.33	
7814.00	48.320	175.970	7739.13	-31.92	36.10	-149.10	40°02'35.510"N	104°55'41.165"W	14.58	
7857.00	54.230	174.090	7766.02	1.38	2.69	-146.17	40°02'35.180"N	104°55'41.127"W	14.16	
7900.00	59.600	175.760	7789.49	37.15	-33.18	-143.00	40°02'34.825"N	104°55'41.087"W	12.90	
7943.00	64.240	177.540	7809.73	74.94	-71.04	-140.80	40°02'34.451"N	104°55'41.058"W	11.39	
7985.00	67.750	179.940	7826.81	113.25	-109.39	-139.96	40°02'34.072"N	104°55'41.048"W	9.85	
8028.00	71.380	178.830	7841.82	153.51	-149.67	-139.53	40°02'33.674"N	104°55'41.042"W	8.78	
8070.00	76.920	178.660	7853.29	193.84	-190.05	-138.64	40°02'33.275"N	104°55'41.031"W	13.20	
8113.00	82.930	178.240	7860.81	236.10	-232.35	-137.49	40°02'32.857"N	104°55'41.016"W	14.01	
8129.00	84.140	178.480	7862.61	251.97	-248.24	-137.04	40°02'32.700"N	104°55'41.010"W	7.71	
8178.00†	87.282	179.243	7866.27	300.77	-297.09	-136.07	40°02'32.217"N	104°55'40.998"W	6.60	7" CASING POINT
8214.00	89.590	179.800	7867.26	336.73	-333.07	-135.77	40°02'31.861"N	104°55'40.994"W	6.60	
8299.00	89.780	179.160	7867.72	421.67	-418.07	-135.00	40°02'31.022"N	104°55'40.984"W	0.79	
8384.00	90.030	179.030	7867.86	506.59	-503.06	-133.65	40°02'30.182"N	104°55'40.966"W	0.33	
8469.00	90.060	179.310	7867.80	591.51	-588.05	-132.42	40°02'29.342"N	104°55'40.951"W	0.33	
8554.00	89.780	179.720	7867.92	676.46	-673.04	-131.70	40°02'28.502"N	104°55'40.941"W	0.58	
8639.00	89.260	180.110	7868.63	761.42	-758.04	-131.58	40°02'27.662"N	104°55'40.940"W	0.76	
8724.00	89.660	179.770	7869.43	846.38	-843.04	-131.49	40°02'26.822"N	104°55'40.939"W	0.62	
8810.00	89.320	179.480	7870.20	932.32	-929.03	-130.93	40°02'25.972"N	104°55'40.931"W	0.52	
8895.00	90.210	179.660	7870.54	1017.27	-1014.03	-130.29	40°02'25.132"N	104°55'40.923"W	1.07	
8980.00	90.030	179.740	7870.37	1102.22	-1099.03	-129.84	40°02'24.292"N	104°55'40.917"W	0.23	
9065.00	90.700	180.010	7869.82	1187.18	-1184.02	-129.66	40°02'23.452"N	104°55'40.915"W	0.85	



Actual Wellpath Report

JELTS 37C-19HZ AWP

Page 4 of 6



REFERENCE WELLPATH IDENTIFICATION

Operator	KERR-MCGEE OIL & GAS ONSHORE LP	Slot	SLOT#22 JELTS 37C-19HZ (275'FNL & 968'FEL, SEC.19)
Area	COLORADO	Well	JELTS 37C-19HZ
Field	WELD COUNTY (KERR MCGEE)	Wellbore	JELTS 37C-19HZ AWP
Facility	SEC.19-T1N-R67W		

WELLPATH DATA (130 stations)

MD [ft]	Inclination [°]	Azimuth [°]	TVD [ft]	Vert Sect [ft]	North [ft]	East [ft]	Latitude	Longitude	DLS [°/100ft]	Comments
9150.00	90.640	180.640	7868.83	1272.15	-1269.02	-130.14	40°02'22.612"N	104°55'40.921"W	0.74	
9236.00	89.840	179.680	7868.47	1358.12	-1355.01	-130.38	40°02'21.762"N	104°55'40.924"W	1.45	
9321.00	92.650	180.140	7866.62	1443.06	-1439.98	-130.25	40°02'20.923"N	104°55'40.923"W	3.35	
9406.00	91.470	180.560	7863.57	1527.98	-1524.93	-130.76	40°02'20.083"N	104°55'40.929"W	1.47	
9491.00	91.500	180.810	7861.37	1612.94	-1609.89	-131.78	40°02'19.244"N	104°55'40.942"W	0.30	
9577.00	91.230	180.610	7859.32	1698.91	-1695.86	-132.85	40°02'18.394"N	104°55'40.956"W	0.39	
9662.00	91.040	181.010	7857.63	1783.88	-1780.84	-134.05	40°02'17.554"N	104°55'40.971"W	0.52	
9747.00	90.640	180.640	7856.39	1868.86	-1865.82	-135.27	40°02'16.715"N	104°55'40.987"W	0.64	
9832.00	88.850	180.500	7856.77	1953.85	-1950.81	-136.12	40°02'15.875"N	104°55'40.998"W	2.11	
9917.00	88.390	181.110	7858.81	2038.81	-2035.77	-137.31	40°02'15.035"N	104°55'41.013"W	0.90	
10002.00	89.190	179.870	7860.61	2123.77	-2120.75	-138.04	40°02'14.195"N	104°55'41.023"W	1.74	
10088.00	89.160	180.040	7861.85	2209.73	-2206.74	-137.97	40°02'13.345"N	104°55'41.022"W	0.20	
10174.00	89.960	180.290	7862.51	2295.70	-2292.74	-138.22	40°02'12.496"N	104°55'41.025"W	0.97	
10259.00	90.370	180.660	7862.26	2380.68	-2377.73	-138.92	40°02'11.656"N	104°55'41.034"W	0.65	
10344.00	89.960	180.160	7862.02	2465.66	-2462.73	-139.53	40°02'10.816"N	104°55'41.042"W	0.76	
10429.00	88.550	178.330	7863.12	2550.58	-2547.71	-138.41	40°02'09.976"N	104°55'41.027"W	2.72	
10515.00	87.220	178.370	7866.30	2636.38	-2633.61	-135.94	40°02'09.127"N	104°55'40.996"W	1.55	
10600.00	87.680	177.890	7870.08	2721.14	-2718.48	-133.16	40°02'08.288"N	104°55'40.960"W	0.78	
10685.00	89.390	178.570	7872.25	2805.96	-2803.41	-130.54	40°02'07.449"N	104°55'40.926"W	2.16	
10770.00	90.360	178.850	7872.44	2890.85	-2888.39	-128.63	40°02'06.609"N	104°55'40.902"W	1.19	
10856.00	88.760	178.310	7873.10	2976.73	-2974.36	-126.50	40°02'05.760"N	104°55'40.874"W	1.96	
10941.00	87.100	176.530	7876.17	3061.44	-3059.21	-122.67	40°02'04.921"N	104°55'40.825"W	2.86	
11022.00	89.040	177.300	7878.89	3142.12	-3140.04	-118.32	40°02'04.122"N	104°55'40.769"W	2.58	
11107.00	90.270	178.030	7879.41	3226.92	-3224.97	-114.85	40°02'03.283"N	104°55'40.725"W	1.68	
11192.00	89.900	178.060	7879.28	3311.75	-3309.92	-111.95	40°02'02.444"N	104°55'40.687"W	0.44	
11278.00	89.630	178.980	7879.63	3397.63	-3395.89	-109.73	40°02'01.594"N	104°55'40.659"W	1.11	
11363.00	89.720	180.040	7880.11	3482.57	-3480.88	-109.01	40°02'00.754"N	104°55'40.649"W	1.25	
11448.00	90.060	180.560	7880.28	3567.55	-3565.88	-109.45	40°01'59.914"N	104°55'40.655"W	0.73	
11533.00	89.070	180.830	7880.92	3652.53	-3650.87	-110.48	40°01'59.074"N	104°55'40.668"W	1.21	
11618.00	88.610	180.920	7882.64	3737.51	-3735.84	-111.78	40°01'58.234"N	104°55'40.685"W	0.55	
11704.00	88.450	181.180	7884.85	3823.47	-3821.80	-113.36	40°01'57.385"N	104°55'40.705"W	0.35	
11789.00	88.330	181.310	7887.24	3908.44	-3906.75	-115.20	40°01'56.546"N	104°55'40.729"W	0.21	
11874.00	88.510	180.640	7889.58	3993.40	-3991.70	-116.65	40°01'55.706"N	104°55'40.748"W	0.82	
11959.00	89.440	181.140	7891.10	4078.38	-4076.68	-117.97	40°01'54.866"N	104°55'40.765"W	1.24	
12044.00	89.340	181.440	7892.01	4163.37	-4161.65	-119.88	40°01'54.027"N	104°55'40.789"W	0.37	
12129.00	91.410	181.590	7891.45	4248.37	-4246.61	-122.13	40°01'53.187"N	104°55'40.818"W	2.44	
12215.00	90.460	180.650	7890.05	4334.35	-4332.58	-123.81	40°01'52.337"N	104°55'40.840"W	1.55	
12300.00	90.120	180.770	7889.62	4419.34	-4417.58	-124.86	40°01'51.497"N	104°55'40.853"W	0.42	
12347.00	89.630	180.670	7889.72	4466.33	-4464.57	-125.45	40°01'51.033"N	104°55'40.861"W	1.06	LAST BHI MWD+IFR SURVEY
12403.00	89.630	180.670	7890.08	4522.33	-4520.57	-126.11	40°01'50.480"N	104°55'40.869"W	0.00	PROJECTION TO BIT



Actual Wellpath Report

JELTS 37C-19HZ AWP

Page 5 of 6



REFERENCE WELLPATH IDENTIFICATION

Operator	KERR-MCGEE OIL & GAS ONSHORE LP	Slot	SLOT#22 JELTS 37C-19HZ (275'FNL & 968'FEL, SEC.19)
Area	COLORADO	Well	JELTS 37C-19HZ
Field	WELD COUNTY (KERR MCGEE)	Wellbore	JELTS 37C-19HZ AWB
Facility	SEC.19-T1N-R67W		

HOLE & CASING SECTIONS - Ref Wellbore: JELTS 37C-19HZ AWB Ref Wellpath: JELTS 37C-19HZ AWP

String/Diameter	Start MD [ft]	End MD [ft]	Interval [ft]	Start TVD [ft]	End TVD [ft]	Start N/S [ft]	Start E/W [ft]	End N/S [ft]	End E/W [ft]
13.5in Open Hole	16.00	933.00	917.00	16.00	932.84	0.00	0.00	-14.64	4.58
9.625in Casing Surface	16.00	933.00	917.00	16.00	932.84	0.00	0.00	-14.64	4.58
8.75in Open Hole	933.00	8185.00	7252.00	932.84	7866.58	-14.64	4.58	-304.08	-135.98
7in Casing Intermediate	16.00	8178.00	8162.00	16.00	7866.27	0.00	0.00	-297.09	-136.07
6.125in Open Hole	8185.00	12403.00	4218.00	7866.58	7890.08	-304.08	-135.98	-4520.57	-126.11

TARGETS

Name	MD [ft]	TVD [ft]	North [ft]	East [ft]	Grid East [US ft]	Grid North [US ft]	Latitude	Longitude	Shape
SECTION 19 LINES		41.00	-26.44	-2972.69	3157293.83	1259018.03	40°02'34.890"N	104°56'17.470"W	polygon
JELTS 37C-19HZ BHL ON PLAT REV-1 (460'FSL & 1130'FEL, SEC.19)		7877.00	-4546.33	-80.43	3160215.09	1254517.07	40°01'50.225"N	104°55'40.282"W	point
JELTS 37C-19HZ LAND BOX		8041.00	0.00	0.00	3160266.17	1259063.65	40°02'35.153"N	104°55'39.248"W	polygon
SEC. 19 HARDLINES (460' SETBACKS)		8041.00	-26.44	-2972.69	3157293.83	1259018.03	40°02'34.890"N	104°56'17.470"W	polygon

WELLPATH COMPOSITION - Ref Wellbore: JELTS 37C-19HZ AWB Ref Wellpath: JELTS 37C-19HZ AWP

Start MD [ft]	End MD [ft]	Positional Uncertainty Model	Log Name/Comment	Wellbore
16.00	878.00	Generic gyro - continuous (Standard)	MS GYRO SURVEYS <116-878>	JELTS 37C-19HZ AWB
878.00	8129.00	NaviTrak (MAGCORR,IFR)	BEGIN BHI MWD+IFR SURVEYS 8 3/4" HOLE <996-8129>	JELTS 37C-19HZ AWB
8129.00	10941.00	OnTrak (MAGCORR,IFR)	BHI MWD+IFR SURVEYS 6 1/8" HOLE <8214-10941>	JELTS 37C-19HZ AWB
10941.00	12347.00	NaviTrak (MAGCORR,IFR)	BHI MWD+IFR SURVEYS 6 1/8" HOLE <11022-12347>	JELTS 37C-19HZ AWB
12347.00	12403.00	Blind Drilling (std)	Projection to bit	JELTS 37C-19HZ AWB



Actual Wellpath Report

JELTS 37C-19HZ AWP

Page 6 of 6



REFERENCE WELLPATH IDENTIFICATION

Operator	KERR-MCGEE OIL & GAS ONSHORE LP	Slot	SLOT#22 JELTS 37C-19HZ (275'FNL & 968'FEL, SEC.19)
Area	COLORADO	Well	JELTS 37C-19HZ
Field	WELD COUNTY (KERR MCGEE)	Wellbore	JELTS 37C-19HZ AWP
Facility	SEC.19-T1N-R67W		

WELLPATH COMMENTS

MD [ft]	Inclination [°]	Azimuth [°]	TVD [ft]	Comment
16.00	0.000	190.350	16.00	TIE-ON
116.00	0.640	190.350	116.00	BEGIN GYRO SURVEYS
878.00	1.400	177.350	877.86	TIE-INTO GYRO SURVEYS
996.00	1.280	200.100	995.83	BEGIN BHI MWD+IFR SURVEYS
8178.00	87.282	179.243	7866.27	7" CASING POINT
12347.00	89.630	180.670	7889.72	LAST BHI MWD+IFR SURVEY
12403.00	89.630	180.670	7890.08	PROJECTION TO BIT