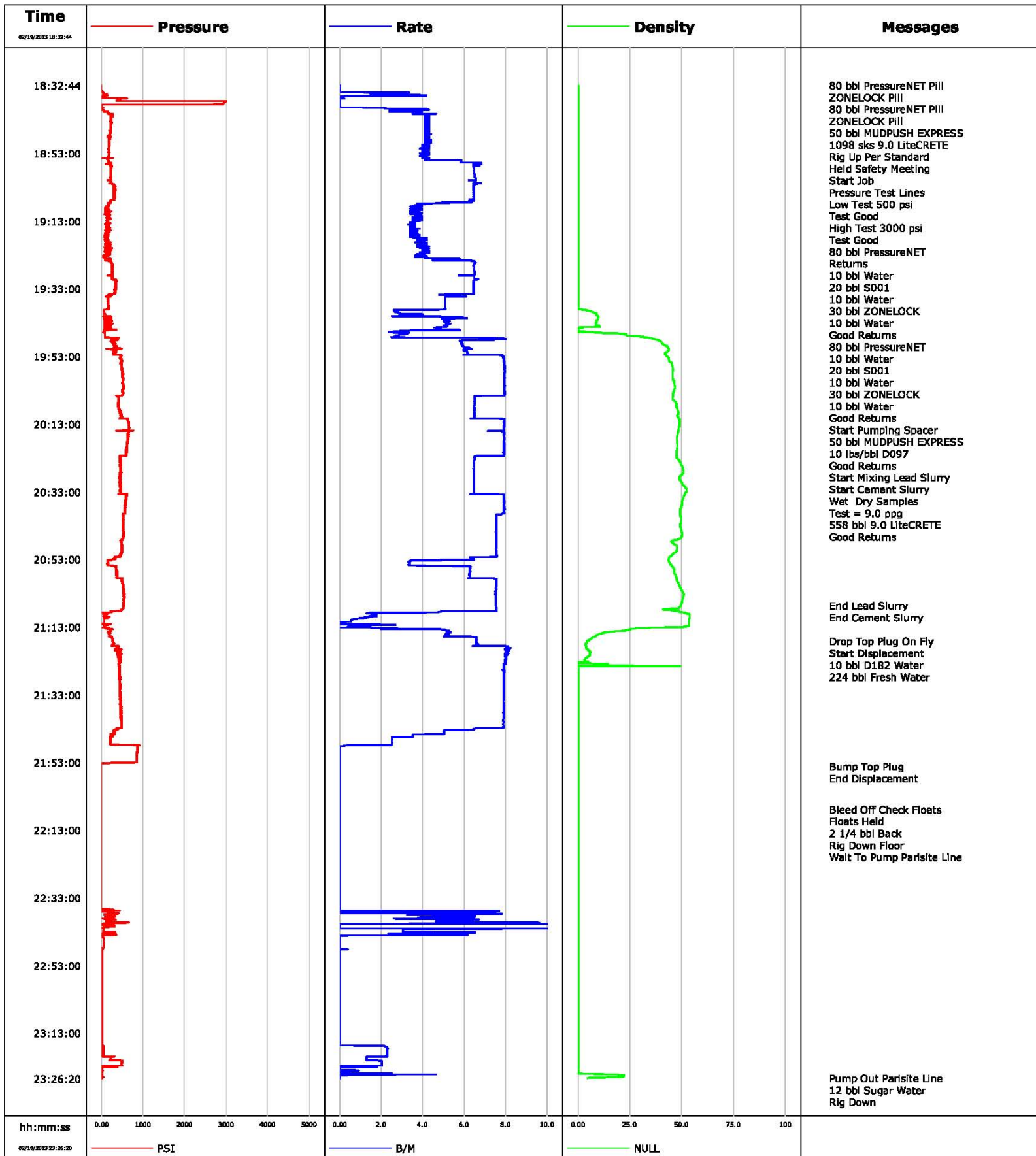
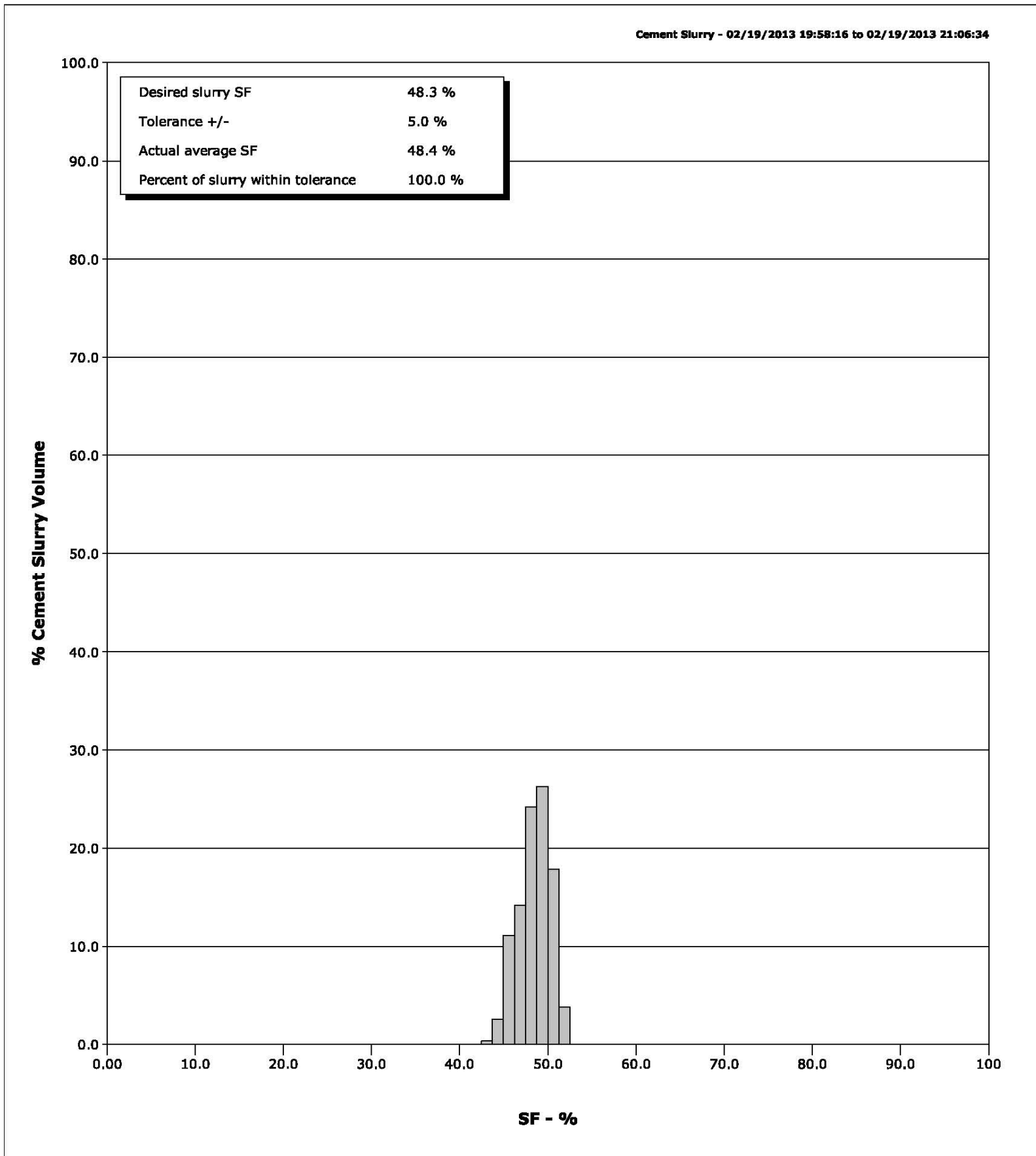


**Well** SGU 8507A-35  
**Field** Story Gulch  
**Engineer** Jordan Moreland  
**Country** United States

**Client** Encana  
**SIR No.**  
**Job Type** 9 5/8 Surface  
**Job Date** 02-19-2013



<b>Well</b>	SGU 8507A-35	<b>Client</b>	Encana
<b>Field</b>	Story Gulch	<b>SIR No.</b>	
<b>Engineer</b>	Jordan Moreland	<b>Job Type</b>	9 5/8 Surface
<b>Country</b>	United States	<b>Job Date</b>	02-19-2013



# Cementing Service Report

				Customer Encana		Job Number C8FL-00647	
Well SGU 8507A-35		Location (legal) D36		Schlumberger Location GCO		Job Start Feb/19/2013	
Field Story Gulch		Formation Name/Type		Deviation		Well MD	
County Garfield		State/Province Colorado		BHP		Well TVD	
Well Master		API/UWI		BHST 120 degF		BHCT 96 degF	
Rig Name Patterson 326		Drilled For Gas		Service Via Land		Casing/Liner	
Offshore Zone		Well Class New		Well Type Development		Depth, ft	
Drilling Fluid Type		Max. Density		Plastic Viscosity		Size, in	
Service Line Cementing		Job Type 9 5/8 Surface				Weight, lb/ft	
Max. Allowed Tub. Press 3000 psi		Max. Allowed Ann. Press		WH Connection Single Cement head		Grade	
Service Instructions Rate And Density Checked 80 bbl PressureNET 10 bbl Water 20 bbl S001 10 bbl Water 30 bbl ZONELOCK 10 bbl Water 80 bbl PressureNET 10 bbl Water 20 bbl S001 .....						Thread	
Casing/Tubing Secured <input checked="" type="checkbox"/>		1 Hole Vol. Circulated prior to Cement <input checked="" type="checkbox"/>		Casing Tools		Squeeze Job	
Lift Pressure 1518 psi		Pipe Rotated <input type="checkbox"/>		Pipe Reciprocated <input type="checkbox"/>		Shoe Type Guide	
No. Centralizers		Top Plugs 1		Bottom Plugs		Shoe Depth 3069.0 ft	
Cement Head Type Single						Tool Type	
Job Scheduled For Feb/19/2013		Arrived on Location Feb/19/2013		Leave Location Feb/19/2013		Tool Depth	
						Tail Pipe Size	
						Tail Pipe Depth	
						Seq. Total Vol.	
Date	Time 24-hr clock	Treating Pressure PSI	Flow Rate B/M	Density NULL	Volume BBL	Message	
02/19/2013	01:00:00					Remark	
02/19/2013	15:59:50					Started Acquisition	
02/19/2013	18:32:44	-4	0.0	0	0.0		
02/19/2013	18:32:48					80 bbl PressureNET Pill	
02/19/2013	18:32:48					ZONELOCK Pill	
02/19/2013	18:32:48					80 bbl PressureNET Pill	
02/19/2013	18:32:48	-4	0.0	0	0.0		
02/19/2013	18:32:49					ZONELOCK Pill	
02/19/2013	18:32:49					50 bbl MUDPUSH EXPRESS	
02/19/2013	18:32:49					1098 sks 9.0 LiteCRETE	
02/19/2013	18:32:49					Rig Up Per Standard	
02/19/2013	18:32:49					Held Safety Meeting	
02/19/2013	18:32:49	-4	0.0	0	0.0		
02/19/2013	18:32:51					Start Job	
02/19/2013	18:32:51					Pressure Test Lines	
02/19/2013	18:32:51	-4	0.0	0	0.0		
02/19/2013	18:32:53					Low Test 500 psi	
02/19/2013	18:32:53					Test Good	
02/19/2013	18:32:53	-4	0.0	0	0.0		
02/19/2013	18:32:54					High Test 3000 psi	
02/19/2013	18:32:54					Test Good	

Well			Field		Job Start		Customer		Job Number	
SGU 8507A-35			Story Gulch		Feb/19/2013		Encana		C8FL-00647	
Date	Time 24-hr clock	Treating Pressure PSI	Flow Rate B/M	Density NULL	Volume BBL	Message				
02/19/2013	18:33:20	-7	0.0	0	0.0					
02/19/2013	18:36:40	609	0.1	0	3.3					
02/19/2013	18:39:51					80 bbl PressureNET				
02/19/2013	18:39:51	10	3.9	0	4.4					
02/19/2013	18:39:53					Returns				
02/19/2013	18:39:53	11	3.6	0	4.5					
02/19/2013	18:40:00	10	4.2	0	5.0					
02/19/2013	18:43:20	231	4.2	0	17.8					
02/19/2013	18:46:40	208	4.2	0	31.9					
02/19/2013	18:50:00	173	4.2	0	46.1					
02/19/2013	18:53:20	178	4.2	0	59.9					
02/19/2013	18:56:40	221	6.5	0	77.3					
02/19/2013	19:00:00	222	6.5	0	98.9					
02/19/2013	19:03:11					10 bbl Water				
02/19/2013	19:03:11					20 bbl S001				
02/19/2013	19:03:11					10 bbl Water				
02/19/2013	19:03:11	328	6.5	0	119.6					
02/19/2013	19:03:12					30 bbl ZONELOCK				
02/19/2013	19:03:12					10 bbl Water				
02/19/2013	19:03:12					Good Returns				
02/19/2013	19:03:12					80 bbl PressureNET				
02/19/2013	19:03:12					10 bbl Water				
02/19/2013	19:03:12					20 bbl S001				
02/19/2013	19:03:12	296	6.5	0	119.7					
02/19/2013	19:03:20	321	6.5	0	120.6					
02/19/2013	19:04:00					10 bbl Water				
02/19/2013	19:04:00					30 bbl ZONELOCK				
02/19/2013	19:04:00					10 bbl Water				
02/19/2013	19:04:00					Good Returns				
02/19/2013	19:04:00	298	6.5	0	124.9					
02/19/2013	19:06:40	285	6.3	0	142.1					
02/19/2013	19:10:00	148	3.5	0	157.0					
02/19/2013	19:13:20	120	3.4	0	169.4					
02/19/2013	19:16:40	93	3.5	0	181.2					
02/19/2013	19:20:00	150	4.1	0	194.0					
02/19/2013	19:23:20	43	3.6	0	207.5					
02/19/2013	19:26:40	267	6.5	0	226.8					
02/19/2013	19:30:00	255	6.5	0	248.4					
02/19/2013	19:33:20	322	6.5	0	270.0					
02/19/2013	19:36:40	164	5.1	0	288.9					
02/19/2013	19:40:00	60	2.8	8	303.9					
02/19/2013	19:40:38					Start Pumping Spacer				
02/19/2013	19:40:38	75	3.9	9	305.9					
02/19/2013	19:40:39					50 bbl MUDPUSH EXPRESS				
02/19/2013	19:40:39					10 lbs/bbl D097				
02/19/2013	19:40:39					Good Returns				
02/19/2013	19:40:39	84	3.6	9	306.0					
02/19/2013	19:43:20	273	5.2	9	319.1					
02/19/2013	19:46:40	81	2.8	24	333.0					
02/19/2013	19:50:00	314	5.9	43	351.4					
02/19/2013	19:53:20	452	7.9	44	373.2					
02/19/2013	19:56:40	493	8.0	46	399.6					
02/19/2013	19:58:16					Start Mixing Lead Slurry				
02/19/2013	19:58:16					Start Cement Slurry				

Well			Field		Job Start		Customer		Job Number	
SGU 8507A-35			Story Gulch		Feb/19/2013		Encana		C8FL-00647	
Date	Time 24-hr clock	Treating Pressure PSI	Flow Rate B/M	Density NULL	Volume BBL	Message				
02/19/2013	19:58:18					Wet Dry Samples				
02/19/2013	19:58:18					Test = 9.0 ppg				
02/19/2013	19:58:18					558 bbl 9.0 LiteCRETE				
02/19/2013	19:58:18					Good Returns				
02/19/2013	19:58:18	498	7.9	46	412.6					
02/19/2013	20:00:00	522	7.9	46	426.1					
02/19/2013	20:03:20	518	7.9	46	452.5					
02/19/2013	20:06:40	390	6.5	47	476.0					
02/19/2013	20:10:00	458	6.5	48	497.6					
02/19/2013	20:13:20	661	7.9	49	522.1					
02/19/2013	20:16:40	629	7.9	48	548.4					
02/19/2013	20:20:00	624	7.9	48	574.8					
02/19/2013	20:23:20	453	6.5	48	599.8					
02/19/2013	20:26:40	448	6.5	51	621.4					
02/19/2013	20:30:00	433	6.5	50	643.0					
02/19/2013	20:33:20	459	6.5	52	664.6					
02/19/2013	20:36:40	564	7.9	50	690.4					
02/19/2013	20:40:00	524	7.5	49	716.7					
02/19/2013	20:43:20	524	7.5	49	741.8					
02/19/2013	20:46:40	525	7.5	50	767.0					
02/19/2013	20:50:00	494	7.5	48	792.1					
02/19/2013	20:53:20	150	3.4	44	815.5					
02/19/2013	20:56:40	347	6.3	46	831.9					
02/19/2013	21:00:00	501	7.5	49	854.7					
02/19/2013	21:03:20	546	7.5	51	879.8					
02/19/2013	21:06:33					End Lead Slurry				
02/19/2013	21:06:33	542	7.5	50	904.0					
02/19/2013	21:06:34					End Cement Slurry				
02/19/2013	21:06:34	534	7.5	50	904.1					
02/19/2013	21:06:40	549	7.5	50	904.9					
02/19/2013	21:10:00	53	1.4	54	921.3					
02/19/2013	21:13:20	162	2.7	29	923.9					
02/19/2013	21:16:40	266	6.6	6	941.6					
02/19/2013	21:17:03					Drop Top Plug On Fly				
02/19/2013	21:17:03	262	6.5	5	944.1					
02/19/2013	21:17:04					Start Displacement				
02/19/2013	21:17:04	271	6.5	5	944.2					
02/19/2013	21:17:06					10 bbl D182 Water				
02/19/2013	21:17:06					224 bbl Fresh Water				
02/19/2013	21:17:06	262	6.6	5	944.4					
02/19/2013	21:20:00	384	8.1	6	965.7					
02/19/2013	21:23:20	443	7.9	0	992.4					
02/19/2013	21:26:40	427	7.9	0	1018.8					
02/19/2013	21:30:00	444	7.9	0	1045.1					
02/19/2013	21:33:20	448	7.9	0	1071.5					
02/19/2013	21:36:40	470	7.9	0	1097.8					
02/19/2013	21:40:00	479	7.9	0	1124.1					
02/19/2013	21:43:20	312	6.5	0	1149.7					
02/19/2013	21:46:40	209	2.5	0	1162.3					
02/19/2013	21:50:00	857	0.0	0	1165.6					
02/19/2013	21:53:20	-3	0.0	0	1165.6					
02/19/2013	21:54:06					Bump Top Plug				
02/19/2013	21:54:06					End Displacement				
02/19/2013	21:54:06	-5	0.0	0	1165.6					

Well SGU 8507A-35			Field Story Gulch	Job Start Feb/19/2013	Customer Encana	Job Number C8FL-00647
Date	Time 24-hr clock	Treating Pressure PSI	Flow Rate B/M	Density NULL	Volume BBL	Message
02/19/2013	22:00:00	-6	0.0	0	1165.6	
02/19/2013	22:03:20	-6	0.0	0	1165.6	
02/19/2013	22:06:40	-6	0.0	0	1165.6	
02/19/2013	22:06:52					Bleed Off Check Floats
02/19/2013	22:06:52					Floats Held
02/19/2013	22:06:52	-6	0.0	0	1165.6	
02/19/2013	22:06:54					2 1/4 bbl Back
02/19/2013	22:06:54	-6	0.0	0	1165.6	
02/19/2013	22:07:19					Rig Down Floor
02/19/2013	22:07:19					Wait To Pump Parlsite Line
02/19/2013	22:07:19	-6	0.0	0	1165.6	
02/19/2013	22:10:00	-6	0.0	0	1165.6	
02/19/2013	22:13:20	-5	0.0	0	1165.6	
02/19/2013	22:16:40	-9	0.0	0	1165.6	
02/19/2013	22:20:00	-8	0.0	0	1165.6	
02/19/2013	22:23:20	-8	0.0	0	1165.6	
02/19/2013	22:26:40	-8	0.0	0	1165.6	
02/19/2013	22:30:00	-8	0.0	0	1165.6	
02/19/2013	22:33:20	-8	0.0	0	1165.6	
02/19/2013	22:36:40	290	0.0	0	1165.6	
02/19/2013	22:40:00	122	4.6	0	1180.2	
02/19/2013	22:43:20	338	6.5	0	1190.3	
02/19/2013	22:46:40	51	0.0	0	1194.2	
02/19/2013	22:50:00	18	0.0	0	1194.2	
02/19/2013	22:53:20	18	0.0	0	1194.2	
02/19/2013	22:56:40	18	0.0	0	1194.2	
02/19/2013	23:00:00	18	0.0	0	1194.2	
02/19/2013	23:03:20	18	0.0	0	1194.2	
02/19/2013	23:06:40	18	0.0	0	1194.2	
02/19/2013	23:10:00	18	0.0	0	1194.2	
02/19/2013	23:13:20	18	0.0	0	1194.2	
02/19/2013	23:16:40	35	0.4	0	1194.3	
02/19/2013	23:20:00	226	1.3	0	1201.7	
02/19/2013	23:23:20	17	0.0	0	1206.6	
02/19/2013	23:26:15					Pump Out Parlsite Line
02/19/2013	23:26:15					12 bbl Sugar Water
02/19/2013	23:26:15					Rig Down
02/19/2013	23:26:15	18	0.0	5	1207.8	
02/19/2013	23:26:17					End Job
02/19/2013	23:26:17	18	0.0	5	1207.8	

Well	Field	Job Start	Customer	Job Number
SGU 8507A-35	Story Gulch	Feb/19/2013	Encana	C8FL-00647

Post Job Summary

Average Pump Rates,					Volume of Fluid Injected,			
Slurry	N2	Mud	Maximum Rate		Total Slurry	Mud	Spacer	N2
Treating Pressure Summary,					Breakdown Fluid			
Maximum	Final	Average	Bump Plug to	Breakdown	Type	Volume		Density
Avg. N2 Percent		Designed Slurry Volume		Displacement	Mix Water Temp	Cement Circulated to Surface? <input checked="" type="checkbox"/>		Volume
					72 degF	Washed Thru Perfs <input type="checkbox"/>		To
Customer or Authorized Representative				Schlumberger Supervisor		Circulation Lost <input type="checkbox"/>		Job Completed <input checked="" type="checkbox"/>
Norm McCreary				Jordan Moreland		-		-