

Noble Energy

Weld County, CO (NAD 83)

Sec. 6-T6N-R62W (Wells Ranch 5 North PAD)

Wells Ranch AE05-69-1HN - A1

Design: Vaughn ESS and Sperry MWD Survey

Sperry Drilling Services

Final Survey Report

19 August, 2013

Well Coordinates: 1,434,156.09 N, 3,317,975.75 E (40° 31' 10.31" N, 104° 21' 22.50" W)

Ground Level: 4,933.00 ft

Local Coordinate Origin: Centered on Well Wells Ranch AE05-69-1HN - Slot A

Viewing Datum: KB=30' @ 4963.00ft (H&P 321)

TVDs to System: N

North Reference: Grid

Unit System: API - US Survey Feet - Custom

Geodetic Scale Factor Applied

Version: 2003.16 Build: 43I

HALLIBURTON

Design Report for Wells Ranch AE05-69-1HN - Vaughn ESS and Sperry MWD Survey

Measured Depth (ft)	Inclination (°)	Azimuth (°)	Vertical Depth (ft)	+N/-S (ft)	+E/-W (ft)	Vertical Section (ft)	Dogleg Rate (°/100ft)
0.00	0.00	0.00	0.00	0.00	0.00	0.00	0.00
188.00	0.40	121.81	188.00	-0.35	0.56	0.47	0.21
Surveys from 188.00ft to 653.00ft are Vaughn ESS Surveys							
464.00	0.30	121.80	463.99	-1.23	1.99	1.68	0.04
653.00	0.90	90.01	652.98	-1.50	3.90	3.48	0.35
Tie-On to Vaughn ESS Survey							
682.00	0.76	62.05	681.98	-1.41	4.29	3.89	1.46
First Sperry MWD Survey							
727.00	0.65	64.22	726.98	-1.16	4.79	4.43	0.23
819.00	0.73	60.45	818.97	-0.64	5.77	5.50	0.10
911.00	1.02	90.29	910.96	-0.35	7.10	6.86	0.57
1,004.00	1.27	358.54	1,003.95	0.68	7.90	7.86	1.78
1,095.00	0.35	331.55	1,094.94	1.93	7.74	7.97	1.07
1,187.00	0.20	307.79	1,186.94	2.27	7.48	7.79	0.20
1,281.00	0.35	266.47	1,280.93	2.35	7.07	7.41	0.26
1,376.00	0.20	210.81	1,375.93	2.19	6.69	7.01	0.31
1,471.00	0.04	92.44	1,470.93	2.05	6.64	6.93	0.23
1,566.00	0.22	72.81	1,565.93	2.10	6.85	7.14	0.19
1,661.00	0.16	6.47	1,660.93	2.29	7.04	7.37	0.22
1,756.00	0.44	208.80	1,755.93	2.09	6.88	7.17	0.62
1,851.00	0.60	201.55	1,850.93	1.31	6.52	6.65	0.18
1,945.00	0.49	244.76	1,944.92	0.68	5.97	5.98	0.44
2,040.00	0.14	249.37	2,039.92	0.47	5.49	5.47	0.38
2,135.00	0.25	144.64	2,134.92	0.26	5.50	5.43	0.33
2,230.00	0.17	26.38	2,229.92	0.22	5.68	5.60	0.38
2,325.00	0.55	251.05	2,324.92	0.19	5.31	5.23	0.72
2,419.00	0.61	242.14	2,418.92	-0.19	4.44	4.30	0.11
2,514.00	0.57	226.07	2,513.91	-0.75	3.66	3.41	0.18
2,609.00	0.62	219.66	2,608.91	-1.48	2.99	2.60	0.09
2,704.00	0.80	239.20	2,703.90	-2.21	2.09	1.56	0.31
2,799.00	1.10	242.99	2,798.89	-2.97	0.70	0.05	0.32
2,894.00	0.43	356.56	2,893.88	-3.03	-0.13	-0.78	1.40
2,989.00	2.43	20.39	2,988.85	-0.79	0.55	0.37	2.15
3,084.00	3.42	40.96	3,083.72	3.24	3.11	3.73	1.50
3,179.00	4.25	24.44	3,178.51	8.58	6.42	8.11	1.45
3,273.00	5.11	12.52	3,272.20	15.84	8.77	11.96	1.38
3,368.00	7.20	18.93	3,366.65	25.60	11.62	16.83	2.31
3,463.00	8.48	19.86	3,460.76	37.82	15.93	23.66	1.36
3,558.00	9.73	17.45	3,554.56	52.06	20.71	31.39	1.37
3,653.00	12.83	16.74	3,647.72	69.83	26.16	40.52	3.27
3,748.00	15.87	17.32	3,739.74	92.34	33.07	52.09	3.21
3,843.00	18.76	13.46	3,830.43	119.60	40.49	65.18	3.26
3,938.00	20.63	11.55	3,919.87	150.85	47.40	78.62	2.08
4,033.00	19.42	11.07	4,009.13	182.74	53.78	91.69	1.29
4,128.00	16.77	12.11	4,099.42	211.65	59.69	103.66	2.80
4,222.00	12.59	17.17	4,190.33	234.71	65.56	114.34	4.65
4,317.00	10.38	18.68	4,283.43	252.72	71.36	123.86	2.35
4,412.00	10.26	17.07	4,376.89	268.91	76.59	132.43	0.33
4,507.00	9.29	14.16	4,470.51	284.43	80.95	140.01	1.14
4,602.00	10.35	17.27	4,564.12	300.01	85.35	147.66	1.25

Design Report for Wells Ranch AE05-69-1HN - Vaughn ESS and Sperry MWD Survey

Measured Depth (ft)	Inclination (°)	Azimuth (°)	Vertical Depth (ft)	+N/-S (ft)	+E/-W (ft)	Vertical Section (ft)	Dogleg Rate (°/100ft)
4,697.00	11.26	19.56	4,657.43	316.90	90.99	156.78	1.06
4,792.00	13.51	21.55	4,750.22	335.96	98.17	167.88	2.41
4,886.00	14.11	18.14	4,841.50	357.06	105.78	179.83	1.08
4,981.00	13.24	16.27	4,933.81	378.51	112.43	190.92	1.03
5,076.00	13.32	16.16	5,026.27	399.46	118.52	201.37	0.08
5,171.00	14.85	18.09	5,118.41	421.55	125.35	212.77	1.69
5,266.00	11.83	18.52	5,210.83	442.37	132.22	223.94	3.18
5,360.00	12.45	21.69	5,302.73	460.92	139.03	234.56	0.96
5,455.00	13.06	18.78	5,395.39	480.59	146.27	245.85	0.93
5,550.00	14.15	17.26	5,487.72	501.84	153.17	257.14	1.21
5,645.00	14.53	13.32	5,579.76	524.53	159.36	268.05	1.10
5,740.00	15.35	16.95	5,671.55	548.16	165.77	279.37	1.31
5,835.00	13.49	15.64	5,763.56	570.86	172.42	290.74	1.98
5,930.00	12.71	14.83	5,856.08	591.63	178.08	300.72	0.85
6,025.00	12.61	15.68	5,948.78	611.71	183.56	310.37	0.22
6,115.00	12.22	14.51	6,036.67	630.39	188.60	319.30	0.51
6,178.00	11.71	13.61	6,098.30	643.05	191.77	325.11	0.86
6,204.00	12.14	13.56	6,123.74	648.28	193.04	327.46	1.67
6,252.00	15.03	19.88	6,170.40	659.04	196.34	332.99	6.75
6,298.00	18.83	26.84	6,214.40	671.28	201.72	340.87	9.35
6,346.00	19.40	27.86	6,259.75	685.24	208.94	350.92	1.38
6,393.00	23.23	30.51	6,303.53	700.13	217.30	362.27	8.40
6,441.00	28.46	36.26	6,346.72	717.52	228.88	377.31	12.06
6,488.00	34.47	40.73	6,386.80	736.65	244.19	396.37	13.71
6,536.00	41.86	42.99	6,424.52	758.69	264.00	420.44	15.68
6,583.00	47.56	44.75	6,457.91	782.50	286.93	447.93	12.40
6,631.00	49.39	48.13	6,489.73	807.24	312.97	478.67	6.52
6,678.00	50.51	54.62	6,519.99	829.66	341.06	510.92	10.83
6,726.00	52.99	60.11	6,549.72	849.95	372.80	546.26	10.36
6,773.00	56.03	65.52	6,577.02	867.39	406.83	583.24	11.37
6,821.00	58.12	67.69	6,603.11	883.37	443.80	622.78	5.78
6,867.00	59.63	71.29	6,626.90	897.16	480.68	661.75	7.45
6,915.00	61.93	76.48	6,650.34	908.76	520.91	703.53	10.58
6,962.00	67.63	78.69	6,670.36	917.88	562.41	746.03	12.85
7,010.00	74.26	80.79	6,686.03	925.94	607.03	791.34	14.42
7,057.00	80.39	81.90	6,696.33	932.83	652.34	837.08	13.26
7,098.00	83.37	83.77	6,702.12	937.89	692.61	877.49	8.55
7,147.00	84.46	87.08	6,707.32	941.77	741.17	925.76	7.07
Estimated 7" Casing Point: 337' FNL, 692' FWL (Not a Survey Station)							
7,175.00	85.09	88.97	6,709.86	942.73	769.04	953.18	7.07
7,221.00	85.08	87.88	6,713.80	943.99	814.85	998.20	2.34
7,316.00	88.55	85.48	6,719.08	949.49	909.52	1,091.85	4.44
7,411.00	89.82	87.07	6,720.43	955.66	1,004.31	1,185.76	2.14
7,506.00	89.60	87.07	6,720.92	960.51	1,099.18	1,279.47	0.23
7,601.00	92.07	89.78	6,719.54	963.12	1,194.12	1,372.76	3.86
7,695.00	90.43	90.22	6,717.49	963.11	1,288.09	1,464.55	1.80
7,790.00	88.31	88.91	6,718.54	963.83	1,383.08	1,557.48	2.63
7,884.00	89.41	87.08	6,720.41	967.12	1,477.00	1,649.92	2.27
7,979.00	90.52	86.43	6,720.46	972.49	1,571.84	1,743.72	1.36
8,074.00	92.49	88.44	6,717.96	976.74	1,666.71	1,837.29	2.96
8,169.00	90.06	89.59	6,715.84	978.37	1,761.66	1,930.38	2.83

Design Report for Wells Ranch AE05-69-1HN - Vaughn ESS and Sperry MWD Survey

Measured Depth (ft)	Inclination (°)	Azimuth (°)	Vertical Depth (ft)	+N/-S (ft)	+E/-W (ft)	Vertical Section (ft)	Dogleg Rate (°/100ft)
8,263.00	88.30	89.55	6,717.18	979.07	1,855.64	2,022.33	1.87
8,358.00	89.69	88.17	6,718.84	980.96	1,950.61	2,115.50	2.06
8,453.00	90.09	89.08	6,719.02	983.24	2,045.58	2,208.75	1.05
8,548.00	88.98	87.85	6,719.79	985.78	2,140.54	2,302.05	1.75
8,643.00	91.26	87.76	6,719.58	989.42	2,235.46	2,395.55	2.40
8,738.00	92.34	89.85	6,716.60	991.41	2,330.39	2,488.69	2.47
8,833.00	89.91	90.80	6,714.73	990.87	2,425.36	2,581.35	2.75
8,927.00	88.09	90.57	6,716.38	989.75	2,519.33	2,672.90	1.95
9,022.00	88.06	87.83	6,719.57	991.08	2,614.26	2,765.91	2.88
9,117.00	92.09	87.73	6,719.45	994.76	2,709.17	2,859.40	4.25
9,212.00	91.02	88.67	6,716.87	997.74	2,804.09	2,952.75	1.51
9,307.00	91.91	88.63	6,714.44	999.98	2,899.03	3,045.96	0.94
9,401.00	90.99	89.23	6,712.06	1,001.74	2,992.98	3,138.11	1.18
9,496.00	89.41	87.91	6,711.73	1,004.11	3,087.94	3,231.38	2.16
9,591.00	90.40	89.39	6,711.89	1,006.35	3,182.91	3,324.62	1.88
9,686.00	88.64	88.61	6,712.68	1,008.00	3,277.89	3,417.75	2.02
9,781.00	88.67	88.49	6,714.90	1,010.41	3,372.83	3,511.00	0.14
9,875.00	88.67	88.68	6,717.08	1,012.73	3,466.78	3,603.26	0.20
9,970.00	88.15	86.67	6,719.71	1,016.59	3,561.66	3,696.77	2.18
10,065.00	89.60	84.60	6,721.58	1,023.82	3,656.36	3,790.81	2.66
10,159.00	92.56	86.01	6,719.81	1,031.51	3,750.01	3,883.94	3.49
10,254.00	91.82	89.05	6,716.18	1,035.60	3,844.85	3,977.45	3.28
10,349.00	89.32	90.71	6,715.23	1,035.80	3,939.83	4,070.27	3.16
10,444.00	89.66	88.80	6,716.08	1,036.21	4,034.82	4,163.14	2.05
10,538.00	91.57	86.95	6,715.06	1,039.69	4,128.74	4,255.63	2.83
10,633.00	92.95	90.27	6,711.31	1,041.99	4,223.62	4,348.80	3.78
10,728.00	90.09	90.36	6,708.79	1,041.47	4,318.58	4,441.43	3.01
10,822.00	90.96	90.65	6,707.93	1,040.64	4,412.57	4,533.06	0.97
10,917.00	89.45	89.71	6,707.59	1,040.34	4,507.57	4,625.79	1.87
11,012.00	90.09	88.24	6,707.98	1,042.04	4,602.55	4,718.93	1.69
11,107.00	88.52	86.15	6,709.13	1,046.68	4,697.42	4,812.59	2.76
11,146.00	88.52	87.33	6,710.13	1,048.90	4,736.34	4,851.09	3.03
Final Sperry MWD Survey							
11,211.00	88.52	87.33	6,711.81	1,051.93	4,801.25	4,915.13	0.00
Survey Projection to TD - Estimated BHL: 331' FNL, 536' FEL							

Design Annotations

Measured Depth (ft)	Vertical Depth (ft)	Local Coordinates		Comment
		+N/-S (ft)	+E/-W (ft)	
188.00	188.00	-0.35	0.56	Surveys from 188.00ft to 653.00ft are Vaughn ESS Surveys
653.00	652.98	-1.50	3.90	Tie-On to Vaughn ESS Survey
682.00	681.98	-1.41	4.29	First Sperry MWD Survey
7,147.00	6,707.32	941.77	741.17	Estimated 7" Casing Point: 337' FNL, 692' FWL (Not a Survey Station)
11,146.00	6,710.13	1,048.90	4,736.34	Final Sperry MWD Survey
11,211.00	6,711.81	1,051.93	4,801.25	Survey Projection to TD
11,211.00	6,711.81	1,051.93	4,801.25	Estimated BHL: 331' FNL, 536' FEL

Design Report for Wells Ranch AE05-69-1HN - Vaughn ESS and Sperry MWD Survey

Vertical Section Information

Angle Type	Target	Azimuth (°)	Origin Type	Origin +N/-S (ft)	Origin +E/-W (ft)	Start TVD (ft)
Target	Wells Ranch AE05-69-1HN_PlanA - Rev0_B HL Tgt	77.63	Slot	0.00	0.00	0.00

Survey tool program

From (ft)	To (ft)	Survey/Plan	Survey Tool
188.00	653.00	Vaughn ESS Surveys	EMS
682.00	7,147.00	Sperry MWD Surveys	MWD
7,147.00	11,211.00	Sperry MWD Surveys	MWD

Casing Details

Measured Depth (ft)	Vertical Depth (ft)	Name	Casing Diameter (")	Hole Diameter (")
7,147.00	6,707.32	7" Csg	7	8-3/4

Targets

Target Name - hit/miss target - Shape	Dip Angle (°)	Dip Dir. (°)	TVD (ft)	+N/-S (ft)	+E/-W (ft)	Northing (ft)	Easting (ft)	Latitude	Longitude
Wells Ranch	0.00	0.00	6,714.01	948.00	760.00	1,435,104.06	3,318,735.72	40° 31' 19.578 N	104° 21' 12.501 W
- actual wellpath misses target center by 7.35ft at 7166.56ft MD (6709.13 TVD, 942.54 N, 760.64 E)									
- Point									
Wells Ranch	0.00	0.00	-6.00	-2,688.77	9.65	1,431,467.41	3,317,985.40	40° 30' 43.740 N	104° 21' 22.824 W
- actual wellpath misses target center by 2688.79ft at 0.00ft MD (0.00 TVD, 0.00 N, 0.00 E)									
- Polygon									
Point 1				598.58	-3,585.82	1,430,570.39	3,318,574.31		
Point 2				501.96	801.19	1,434,957.25	3,318,477.69		
Point 3				4,871.97	934.81	1,435,090.87	3,322,847.56		
Point 4				4,954.59	-3,416.20	1,430,740.00	3,322,930.18		
Point 5				598.58	-3,585.82	1,430,570.39	3,318,574.31		
Wells Ranch	0.00	0.00	6,705.89	1,053.44	4,802.07	1,435,209.50	3,322,777.66	40° 31' 20.100 N	104° 20' 20.148 W
- actual wellpath misses target center by 6.16ft at 11211.00ft MD (6711.81 TVD, 1051.93 N, 4801.25 E)									
- Point									
Wells Ranch	0.00	0.00	-6.00	-2,688.77	9.65	1,431,467.41	3,317,985.40	40° 30' 43.740 N	104° 21' 22.824 W
- actual wellpath misses target center by 2688.79ft at 0.00ft MD (0.00 TVD, 0.00 N, 0.00 E)									
- Polygon									
Point 1				138.54	-4,045.78	1,430,110.44	3,318,114.28		
Point 2				42.00	1,261.23	1,435,417.28	3,318,017.75		
Point 3				5,332.01	1,394.77	1,435,550.81	3,323,307.59		
Point 4				5,414.55	-3,876.24	1,430,279.98	3,323,390.13		
Point 5				138.54	-4,045.78	1,430,110.44	3,318,114.28		

North Reference Sheet for Sec. 6-T6N-R62W (Wells Ranch 5 North PAD) - Wells Ranch AE05-69-1HN

All data is in US Feet unless otherwise stated. Directions and Coordinates are relative to Grid North Reference.

Vertical Depths are relative to KB=30' @ 4963.00ft (H&P 321). Northing and Easting are relative to Wells Ranch AE05-69-1HN - Slot A1

Coordinate System is US State Plane 1983, Colorado Northern Zone using datum North American Datum 1983, ellipsoid GRS 1980

Projection method is Lambert Conformal Conic (2 parallel)

Central Meridian is 105° 30' 0.000 W°, Longitude Origin: 0° 0' 0.000 E°, Latitude Origin: 40° 47' 0.000 N°

False Easting: 3,000,000.00ft, False Northing: 1,000,000.00ft, Scale Reduction: 0.99996782

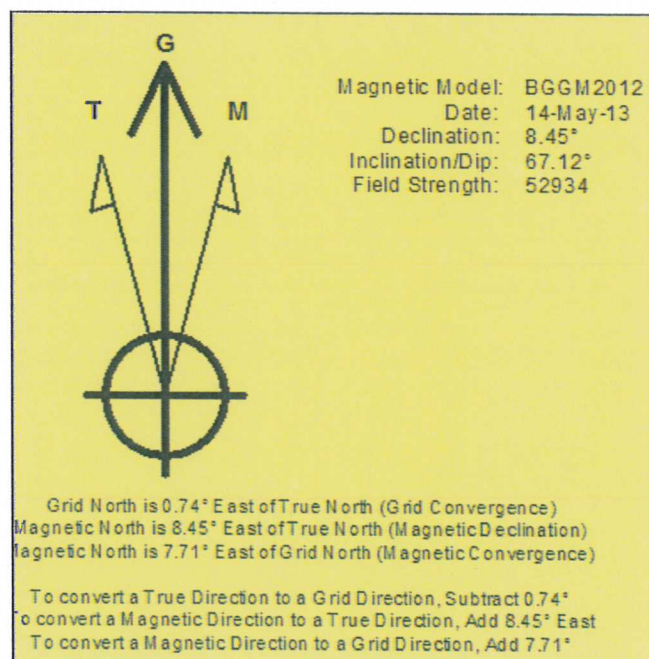
Grid Coordinates of Well: 1,434,156.09 ft N, 3,317,975.75 ft E

Geographical Coordinates of Well: 40° 31' 10.31" N, 104° 21' 22.50" W

Grid Convergence at Surface is: 0.74°

Based upon Minimum Curvature type calculations, at a Measured Depth of 11,211.00ft
the Bottom Hole Displacement is 4,915.13ft in the Direction of 77.64° (Grid).

Magnetic Convergence at surface is: -7.71° (14 May 2013, , BGGM2012)

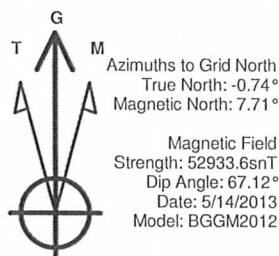


Project: Weld County, CO (NAD 83)
 Site: Sec. 6-T6N-R62W (Wells Ranch 5 North PAD)
 Well: Wells Ranch AE05-69-1HN

Noble Energy

HALLIBURTON

Sperry Drilling

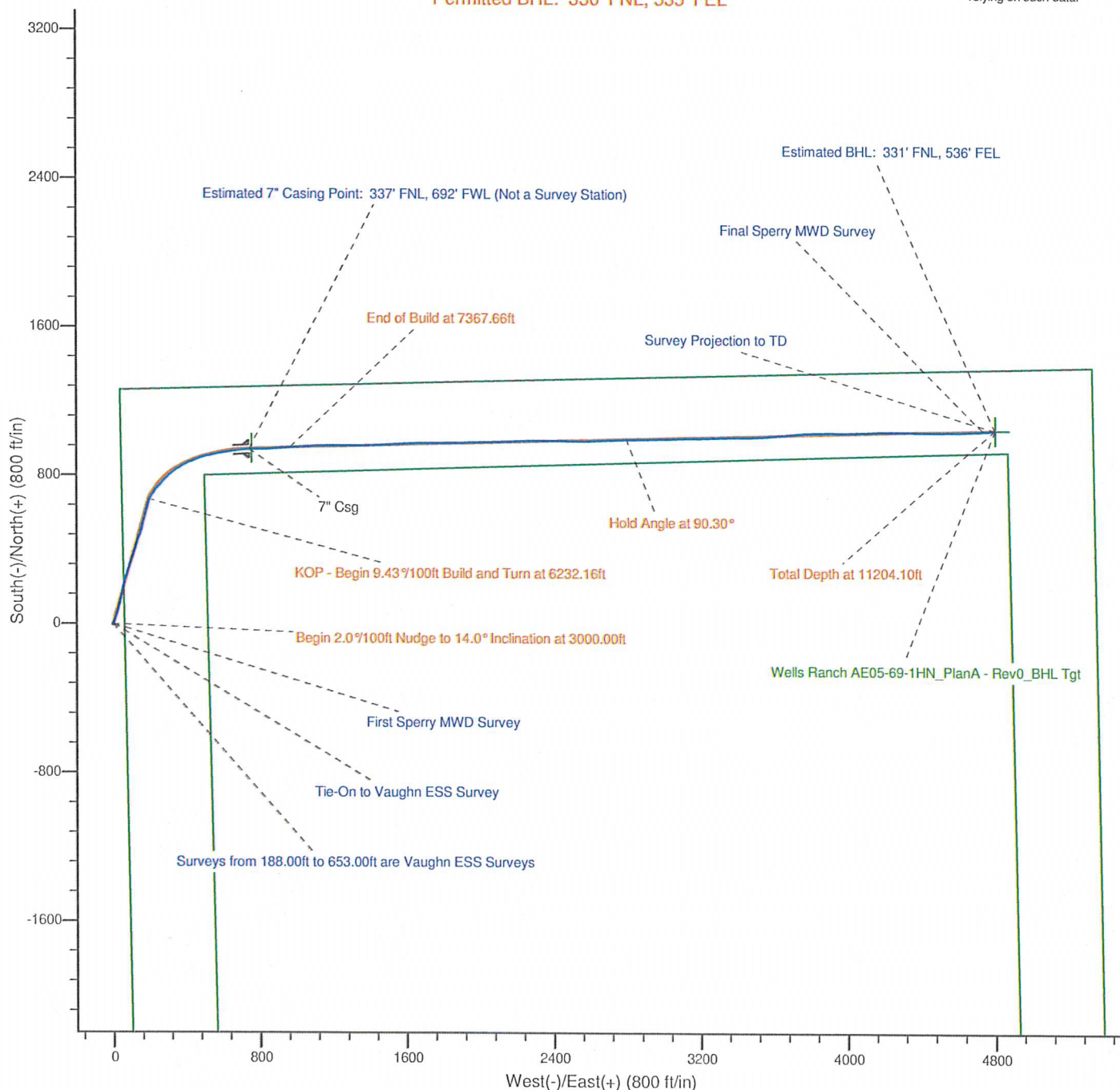


LEGEND

- Wells Ranch AE05-69-1HN, Plan A, Plan A - Rev 0 Proposal V0
- Vaughn ESS and Sperry MWD Survey

Halliburton Energy Services, Inc. ("Halliburton") recently completed directional drilling and MWD operations at the Wells Ranch AE05-69-1HN well located at Weld County, CO. At the conclusion of the job Halliburton performed a final survey on the well. Noble Energy has requested that Halliburton provide them the distances from BHL to section lines from that final survey to allow Noble Energy to meet its requirements under Colorado law. These distances are generated by a mathematical algorithm based on rough data collected after the well is drilled. Halliburton considers it to be a rough estimate only and it is not to be relied upon in any application where accurate data is required. In consideration for Halliburton releasing this data to Noble Energy, Noble Energy agrees to release Halliburton from any consequences of it or anyone else relying on such data.

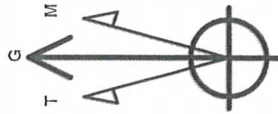
Permitted BHL: 330' FNL, 535' FEL



Project: Weld County, CO (NAD 83)
Site: Sec. 6-T6N-R62W (Wells Ranch 5 North PAD)
Well: Wells Ranch AE05-69-1HN

Noble Energy

HALLIBURTON
Sperry Drilling



Azimuths to Grid North
True North: -0.74°
Magnetic North: 7.71°

Magnetic Field
Strength: 52933.6snT
Dip Angle: 67.12°
Date: 5/14/2013
Model: BGGM2012

LEGEND

- Wells Ranch AE05-69-1HN, Plan A, Plan A - Rev 0 Proposal VO
- Vaughn ESS and Sperry MWD Survey

Halliburton Energy Services, Inc. ("Halliburton") recently completed directional drilling and MWD operations at the Wells Ranch AE05-69-1HN well located at Weld County, CO. At the conclusion of the job Halliburton performed a final survey on the well. Noble Energy has requested that Halliburton provide them the distances from BHL to section lines from that final survey to allow Noble Energy to meet its requirements under Colorado law. These distances are generated by a mathematical algorithm based on rough data collected after the well is drilled. Halliburton considers it to be a rough estimate only and it is not to be relied upon in any application where accurate data is required. In consideration for Halliburton releasing this data to Noble Energy, Noble Energy agrees to release Halliburton from any consequences of it or anyone else relying on such data.

