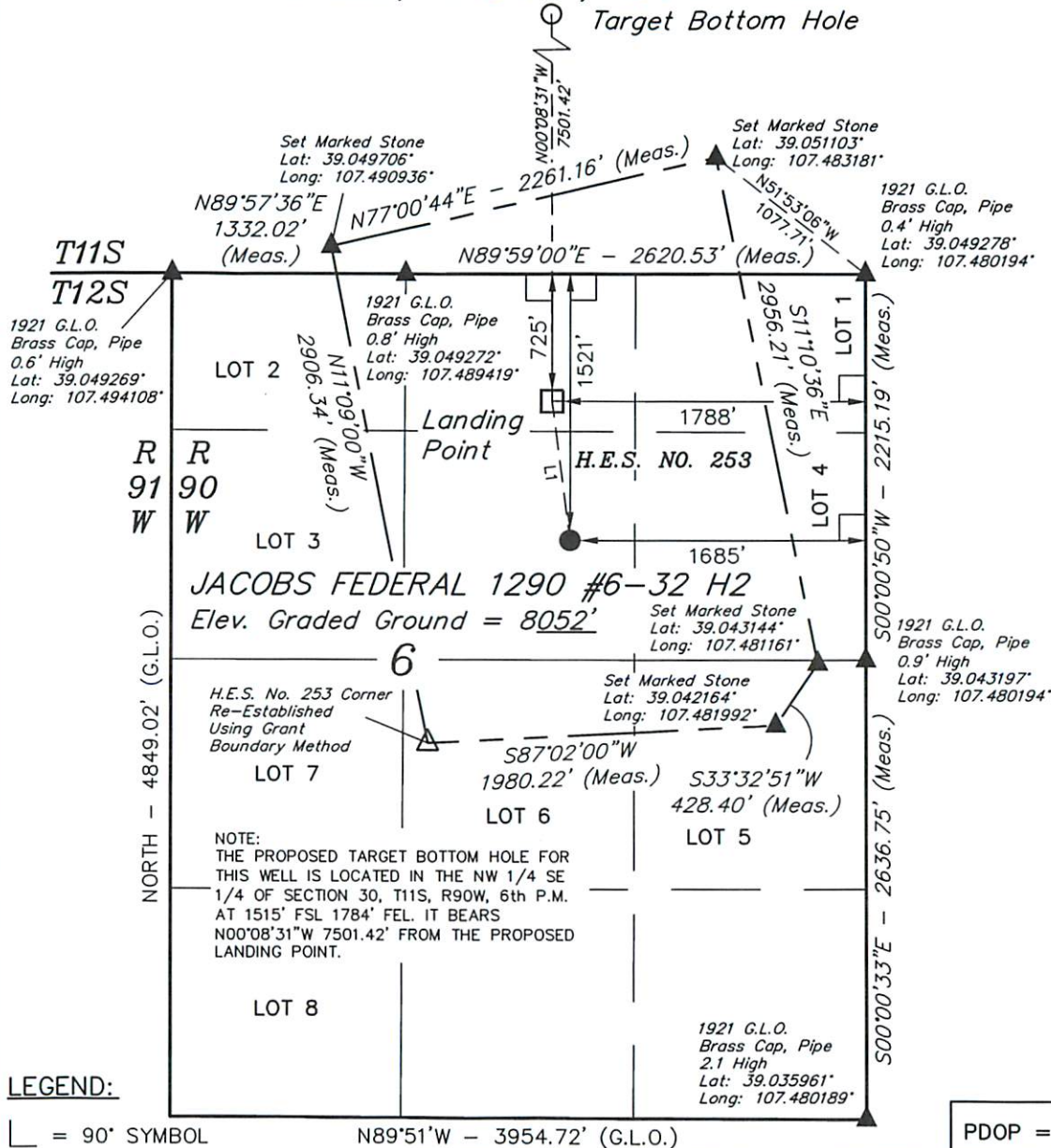


T12S, R90W, 6th P.M.

Target Bottom Hole



GUNNISON ENERGY CORPORATION

Well location, JACOBS FEDERAL 1290 #6-32 H2
(SURFACE LOCATION), located as shown in the SW
1/4 NE 1/4 of Section 6, T12S, R90W, 6th P.M.,
Gunnison County, Colorado.

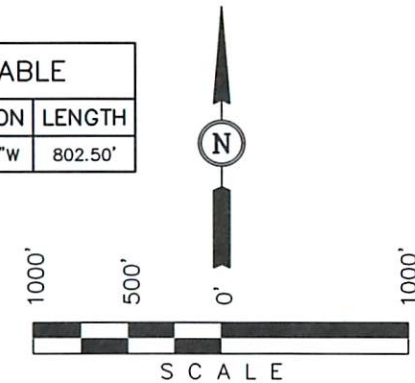
BASIS OF ELEVATION

SPOT ELEVATION LOCATED IN THE NE 1/4 OF SECTION
9, T11S, R90W, 6th P.M. TAKEN FROM THE BULL MOUNTAIN,
QUADRANGLE, COLORADO, GUNNISON COUNTY, 7.5 MINUTE
QUAD (TOPOGRAPHIC MAP) PUBLISHED BY THE UNITED STATES
DEPARTMENT OF THE INTERIOR, GEOLOGICAL SURVEY. SAID
ELEVATION IS MARKED AS BEING 7487 FEET.

BASIS OF BEARINGS

BASIS OF BEARINGS IS A G.P.S. OBSERVATION.

LINE TABLE		
LINE	DIRECTION	LENGTH
L1	N07°21'55"W	802.50'



CERTIFICATE

THIS IS TO CERTIFY THAT THE ABOVE PLAT WAS PREPARED FROM
FIELD NOTES OF ACTUAL SURVEYS MADE BY ME OR UNDER MY
SUPERVISION AND THAT THE SAME ARE TRUE AND CORRECT TO THE
BEST OF MY KNOWLEDGE AND BELIEF.

REGISTERED LAND SURVEYOR
REGISTRATION NO. 17490
STATE OF COLORADO

REVISED: 06-26-13 T.B.

UINTAH ENGINEERING & LAND SURVEYING

85 SOUTH 200 EAST - VERNAL, UTAH 84078

(435) 789-1017

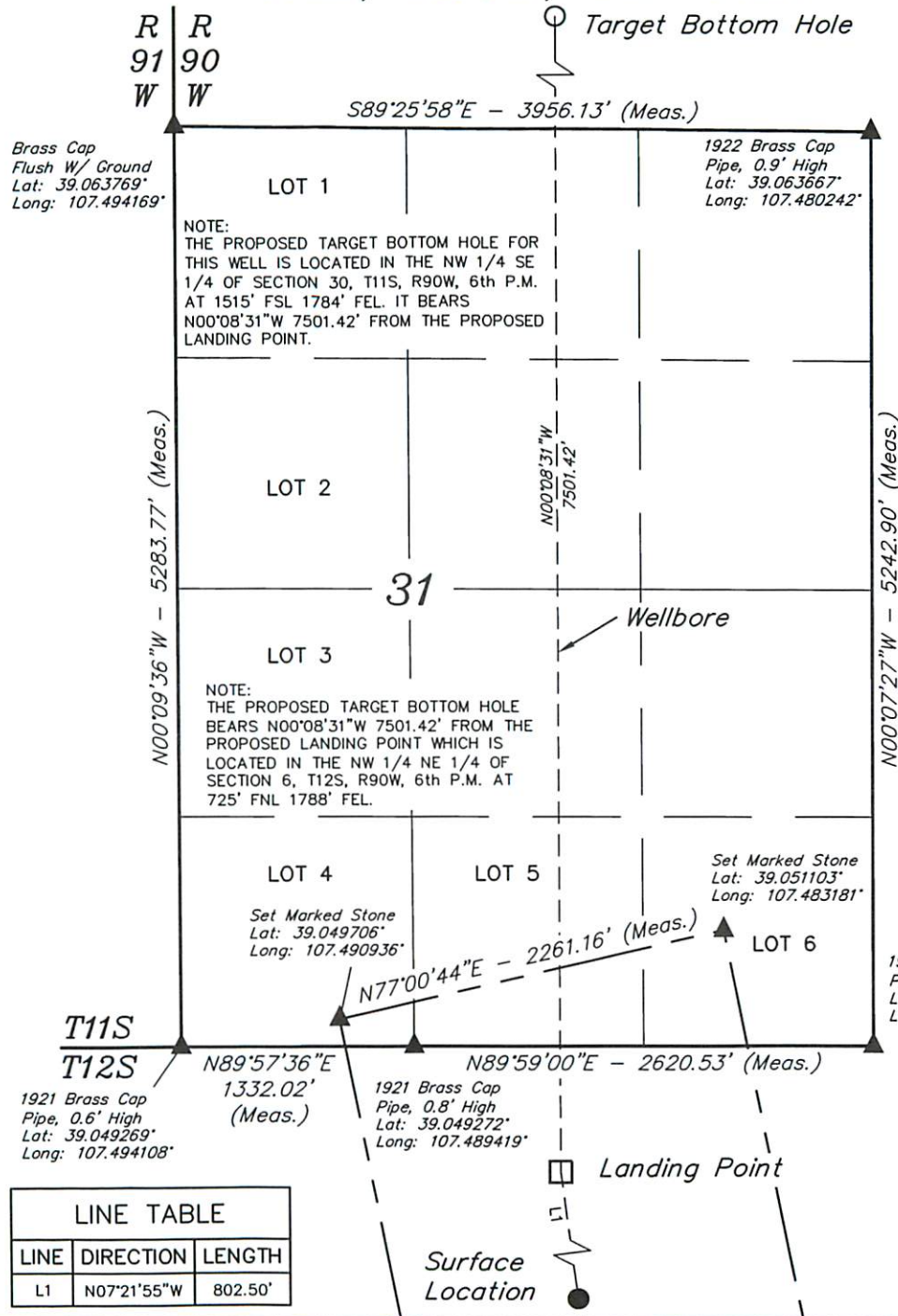
SCALE 1" = 1000'	DATE SURVEYED: 06-14-13	DATE DRAWN: 06-17-13
PARTY B.B. B.J. T.B.	REFERENCES G.L.O. PLAT	
WEATHER WARM	FILE GUNNISON ENERGY CORPORATION	

N89°51'W - 3954.72' (G.L.O.)

PDOP = 1.9

NAD 83 (LANDING POINT)	NAD 83 (SURFACE LOCATION)
LATITUDE = 39°02'50.23" (39.047286)	LATITUDE = 39°02'42.37" (39.045103)
LONGITUDE = 107°29'11.36" (107.486489)	LONGITUDE = 107°29'10.05" (107.486125)
NAD 27 (LANDING POINT)	NAD 27 (SURFACE LOCATION)
LATITUDE = 39°02'50.28" (39.047300)	LATITUDE = 39°02'42.41" (39.045114)
LONGITUDE = 107°29'09.16" (107.485878)	LONGITUDE = 107°29'07.86" (107.485517)
UTM COORD.: NAD 1927/ZONE 13 N = 14188811.45 E = 934601.75	UTM COORD.: NAD 1927/ZONE 13 N = 14188013.26 E = 934683.16

T11S, R90W, 6th P.M.



GUNNISON ENERGY CORPORATION

Well location, JACOBS FEDERAL 1290 #6-32 H2 (WELLBORE), located as shown in the E 1/2 of Section 31, T11S, R90W, 6th P.M., Gunnison County, Colorado.

BASIS OF ELEVATION

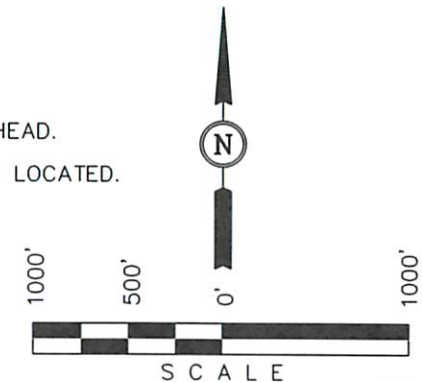
SPOT ELEVATION LOCATED IN THE NE 1/4 OF SECTION 9, T11S, R90W, 6th P.M. TAKEN FROM THE BULL MOUNTAIN, QUADRANGLE, COLORADO, GUNNISON COUNTY, 7.5 MINUTE QUAD (TOPOGRAPHIC MAP) PUBLISHED BY THE UNITED STATES DEPARTMENT OF THE INTERIOR, GEOLOGICAL SURVEY. SAID ELEVATION IS MARKED AS BEING 7487 FEET.

BASIS OF BEARINGS

BASIS OF BEARINGS IS A G.P.S. OBSERVATION.

LEGEND:

- └─ = 90° SYMBOL
- = PROPOSED WELL HEAD.
- ▲ = SECTION CORNERS LOCATED.



CERTIFICATE

THIS IS TO CERTIFY THAT THE ABOVE PLAT WAS PREPARED FROM FIELD NOTES OF ACTUAL SURVEYS MADE BY ME OR UNDER MY SUPERVISION AND THAT THE SAME ARE TRUE AND CORRECT TO THE BEST OF MY KNOWLEDGE AND BELIEF.

REGISTERED LAND SURVEYOR
REGISTRATION NO. 14900
STATE OF COLORADO
09-16-13

UINTAH ENGINEERING & LAND SURVEYING

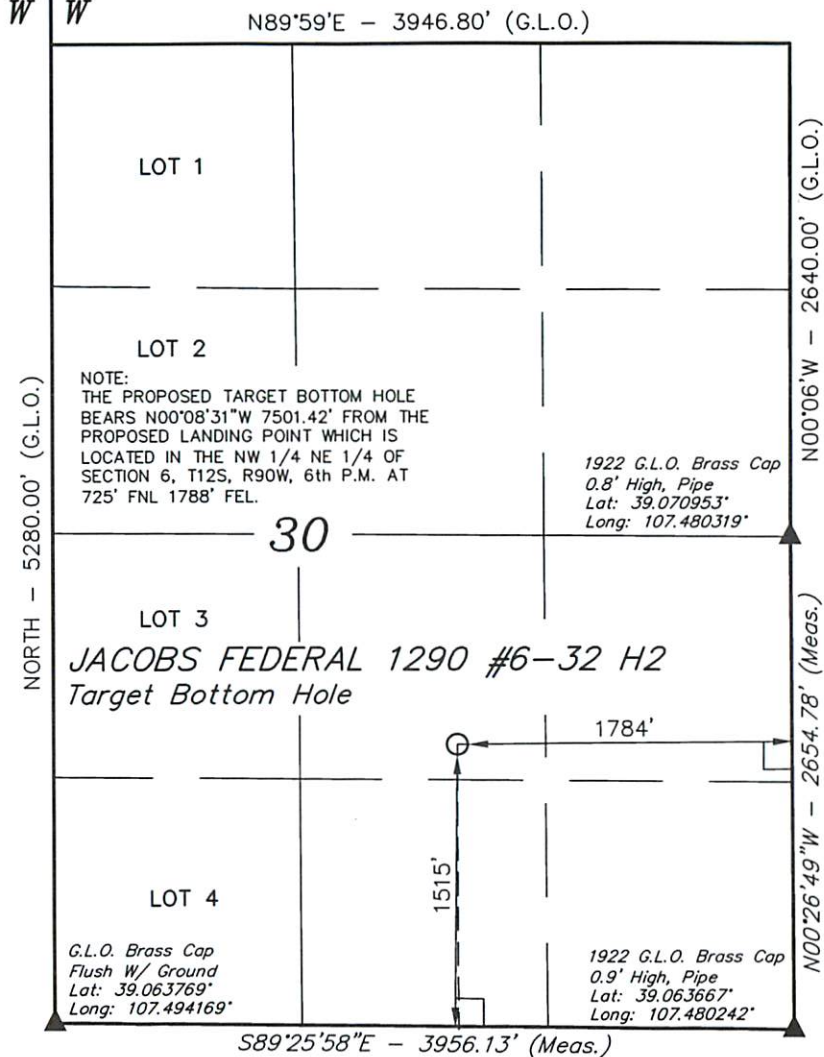
85 SOUTH 200 EAST - VERNAL, UTAH 84078

(435) 789-1017

SCALE 1" = 1000'	DATE SURVEYED: 06-14-13	DATE DRAWN: 09-16-13
PARTY B.B. B.J. T.B.	REFERENCES G.L.O. PLAT	
WEATHER WARM	FILE GUNNISON ENERGY CORPORATION	

R R
91 90
W W

T11S, R90W, 6th P.M.



LEGEND:

- └─┘ = 90° SYMBOL
- = PROPOSED WELL HEAD.
- ▲ = SECTION CORNERS LOCATED.

Landing Point

Surface
Location

NAD 83 (TARGET BOTTOM HOLE)
LATITUDE = 39°04'04.34" (39.067872)
LONGITUDE = 107°29'11.64" (107.486567)
NAD 27 (TARGET BOTTOM HOLE)
LATITUDE = 39°04'04.39" (39.067886)
LONGITUDE = 107°29'09.44" (107.485956)
UTM COORD.: NAD 1927/ZONE 13
N = 14196309.09 E = 934784.91

GUNNISON ENERGY CORPORATION

Well location, JACOBS FEDERAL 1290 #6-32 H2
(TARGET BOTTOM HOLE), located as shown in the
NW 1/4 SE 1/4 of Section 30, T11S, R90W, 6th
P.M., Gunnison County, Colorado.

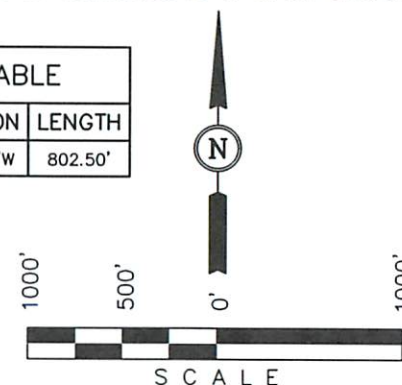
BASIS OF ELEVATION

SPOT ELEVATION LOCATED IN THE NE 1/4 OF SECTION
9, T11S, R90W, 6th P.M. TAKEN FROM THE BULL MOUNTAIN,
QUADRANGLE, COLORADO, GUNNISON COUNTY, 7.5 MINUTE
QUAD (TOPOGRAPHIC MAP) PUBLISHED BY THE UNITED STATES
DEPARTMENT OF THE INTERIOR, GEOLOGICAL SURVEY. SAID
ELEVATION IS MARKED AS BEING 7487 FEET.

BASIS OF BEARINGS

BASIS OF BEARINGS IS A G.P.S. OBSERVATION.

LINE TABLE		
LINE	DIRECTION	LENGTH
L1	N07°21'55"W	802.50'



CERTIFICATE

THIS IS TO CERTIFY THAT THE ABOVE PLAT WAS PREPARED FROM
FIELD NOTES OF ACTUAL SURVEYS MADE BY ME OR UNDER MY
SUPERVISION AND THAT THE SAME ARE TRUE AND CORRECT TO THE
BEST OF MY KNOWLEDGE AND BELIEF.

REGISTERED LAND SURVEYOR
REGISTRATION NO. 14908
STATE OF COLORADO
06-20-13

UINTAH ENGINEERING & LAND SURVEYING

85 SOUTH 200 EAST - VERNAL, UTAH 84078

(435) 789-1017

SCALE 1" = 1000'	DATE SURVEYED: 06-14-13	DATE DRAWN: 06-17-13
PARTY B.B. B.J. T.B.	REFERENCES G.L.O. PLAT	
WEATHER WARM	FILE GUNNISON ENERGY CORPORATION	