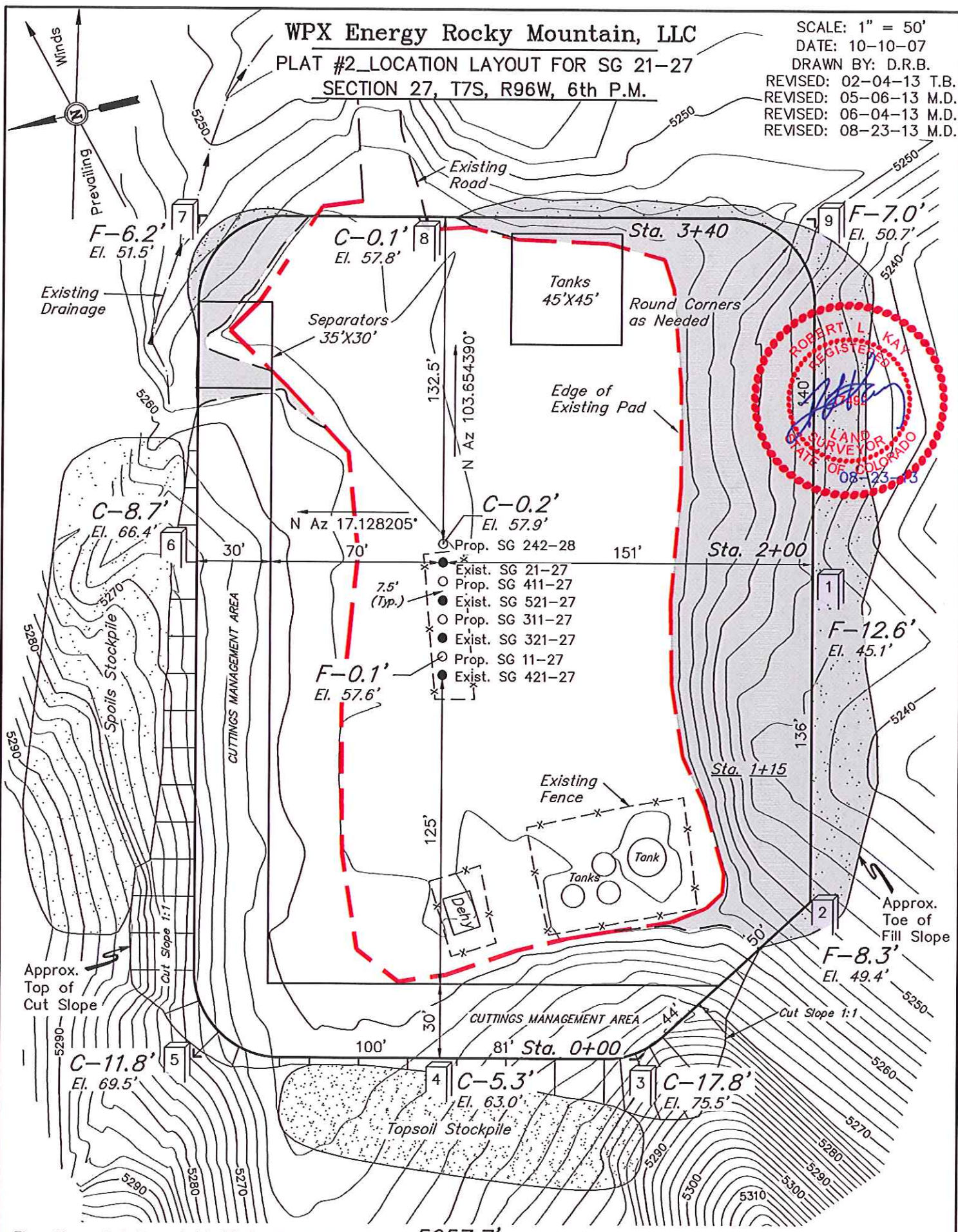


WPX Energy Rocky Mountain, LLC
 PLAT #2_LOCATION LAYOUT FOR SG 21-27
 SECTION 27, T7S, R96W, 6th P.M.

SCALE: 1" = 50'
 DATE: 10-10-07
 DRAWN BY: D.R.B.
 REVISED: 02-04-13 T.B.
 REVISED: 05-06-13 M.D.
 REVISED: 06-04-13 M.D.
 REVISED: 08-23-13 M.D.



Elev. Ungraded Ground At SG 21-27 Well Head = 5257.7'
 FINISHED GRADE ELEV. AT SG 21-27 WELL HEAD = 5257.7'

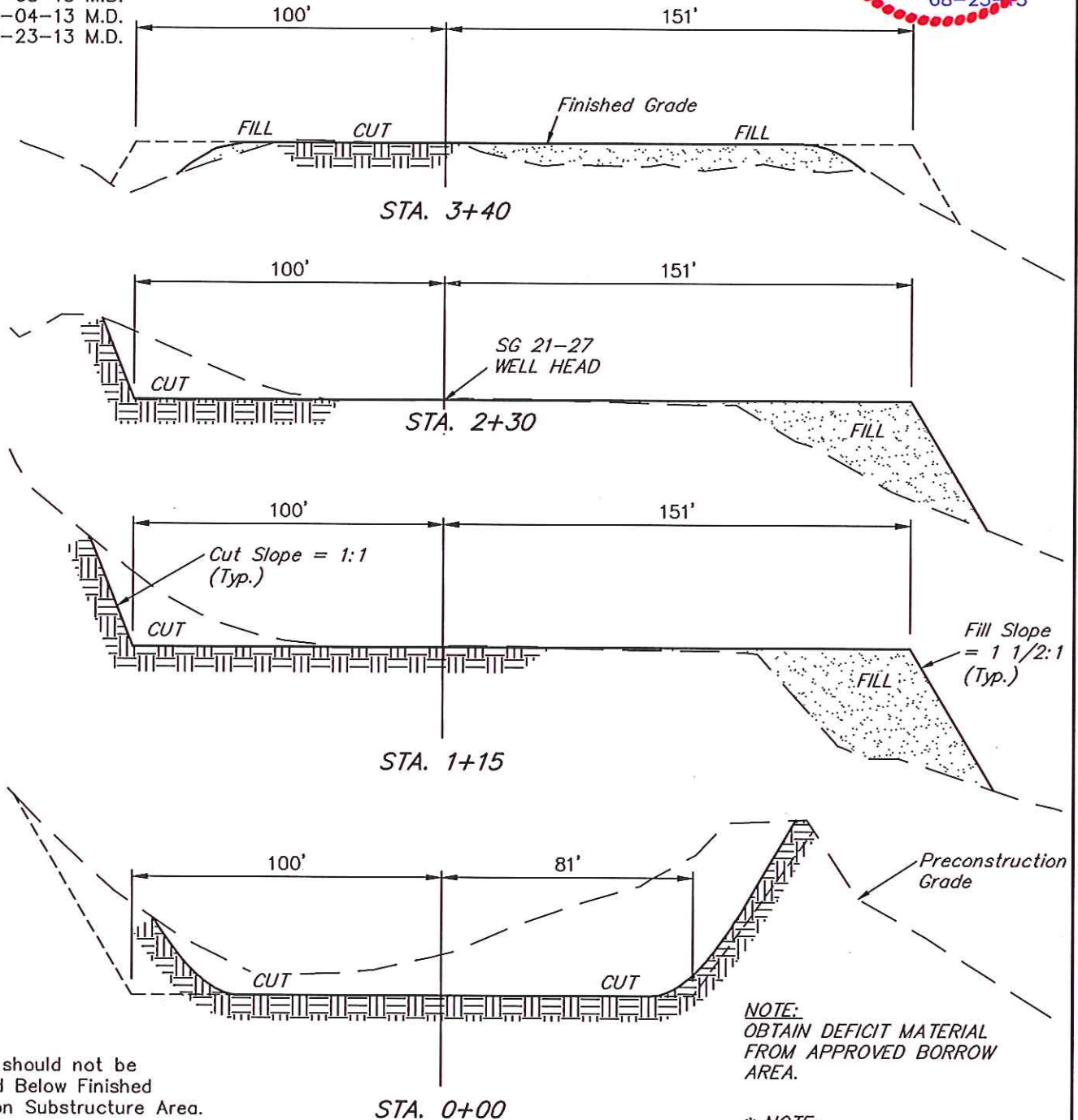
UINTAH ENGINEERING & LAND SURVEYING
 85 So. 200 East * Vernal, Utah 84078 * (435) 789-1017

1" = 20'
X-Section
Scale
1" = 50'

WPX Energy Rocky Mountain, LLC
CONSTRUCTION LAYOUT CROSS SECTIONS FOR
PLAT #3_TYPICAL CROSS SECTION FOR SG 21-27
SECTION 27, T7S, R96W, 6th P.M.



DATE: 10-10-07
DRAWN BY: D.R.B.
REVISED: 02-04-13 T.B.
REVISED: 05-08-13 M.D.
REVISED: 06-04-13 M.D.
REVISED: 08-23-13 M.D.



APPROXIMATE YARDAGES

(6") Topsoil Stripping = 1,040 Cu. Yds.
(New Construction Only)
Remaining Location = 4,480 Cu. Yds.
TOTAL CUT = 5,520 CU. YDS.
FILL = 6,590 CU. YDS.

DEFICIT MATERIAL = <1,070> Cu. Yds.
Topsoil = 1,040 Cu. Yds.
EXCESS UNBALANCE = <2,110> Cu. Yds.
(After Interim Rehabilitation)

UINTAH ENGINEERING & LAND SURVEYING
85 So. 200 East * Vernal, Utah 84078 * (435) 789-1017