

W.C. 1912 Brass  
Cap 1.0' High  
Lat: 39.502482°  
Long: 108.104239°

Well location, GM 521-28, located as shown in LOT 4 of Section 28, T6S, R96W, 6th P.M., Garfield County, Colorado.

SPOT ELEVATION AT THE NORTHWEST CORNER OF SECTION 30, T5S, R9SW, 6th P.M. TAKEN FROM THE FORKED GULCH QUADRANGLE, COLORADO, GARFIELD COUNTY, 7.5 MINUTE SERIES (TOPOGRAPHICAL MAP) PUBLISHED BY THE UNITED STATES DEPARTMENT OF THE INTERIOR, GEOLOGICAL SURVEY. SAID ELEVATION IS MARKED AS BEING 5966 FEET.

BASIS OF BEARINGS IS A G.P.S. OBSERVATION.

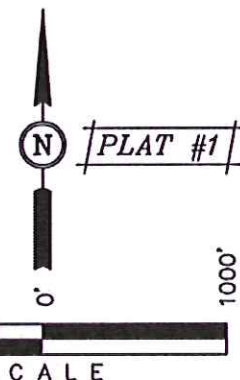
**LEGEND:**

**L = 90° SYMBOL**

● = PROPOSED WELL HEAD.

▲ = SECTION CORNERS LOCATED.

△ = SECTION CORNERS  
RE-ESTABLISHED.  
(Not Set on Ground.)



## CERTIFICATE

THIS IS TO CERTIFY THAT THE ABOVE PLAT WAS PREPARED AND  
LOCATION AS SHOWN WAS STAKED ON THE GROUND FROM FIELD  
NOTES OF ACTUAL SURVEYS MADE BY ME OR UNDER MY  
SUPERVISION AND THAT THE SAME ARE TRUE AND CORRECT TO THE  
BEST OF MY KNOWLEDGE AND BELIEF.

REGISTERED LAND SURVEYOR  
REGISTRATION NO. 17492  
STATE OF COLORADO

(435) 789-1017

SCALE  
1" = 1000'

DATE SURVEYED:	04-13-12
----------------	----------

DATE DRAWN:  
07-02-13

PARTY	B.B.	C.C.	M.D.
-------	------	------	------

REFERENCES	G.I.O. PLAT
------------	-------------

WEATHER	WARM
---------	------

FILE	WPX Energy Rocky Mountain, LLC
------	--------------------------------

LINE	DIRECTION	LENGTH
L1	S89°56'58"W	158.40'
L2	S89°56'58"W	16.50'
L3	S89°54'43"W	1300.69'
L4	S82°44'03"W	681.90'

PDOP = 1.8

<b>NAD 83 (TARGET BOTTOM HOLE)</b>	<b>NAD 83 (SURFACE LOCATION)</b>
<b>LATITUDE = 39°29'57.04" (39.499178)</b>	<b>LATITUDE = 39°29'56.19" (39.498942)</b>
<b>LONGITUDE = 108°07'01.06" (108.116961)</b>	<b>LONGITUDE = 108°07'09.69" (108.119358)</b>
<b>STATE PLANE--(COLO. CENTRAL--NAD 83)</b>	<b>STATE PLANE--(COLO. CENTRAL--NAD 83)</b>
<b>N = 1617340.41</b>	<b>N = 1617273.65</b>
<b>E = 2261627.46</b>	<b>E = 2260949.05</b>