



Physical Address: 345 Comanche St.
Mail to: Box 384, Kiowa, CO 80117
Ph. 303-621-8672 - Fax 303-621-7749
www.highprairiesurvey.com

Job # 12151 Pelger #1-12A

Inv # 2642

High Prairie Surveying of Kiowa, Colorado, in accordance with a request from Ted Pagano of Investment Equipment PLC, has determined the location of Pelger #1-12A to be 699 feet FNL, and 662 feet FEL, (90° off Section lines) of SECTION 12, Township 13s, Range 51w of the 6th Principal Meridian, Cheyenne County, Colorado.

Date: Staked on 08/12/13 drawn on 08/19/13.

Re: Staked by Elijah Frane

Drawn: Drawn by Dustin Cotter

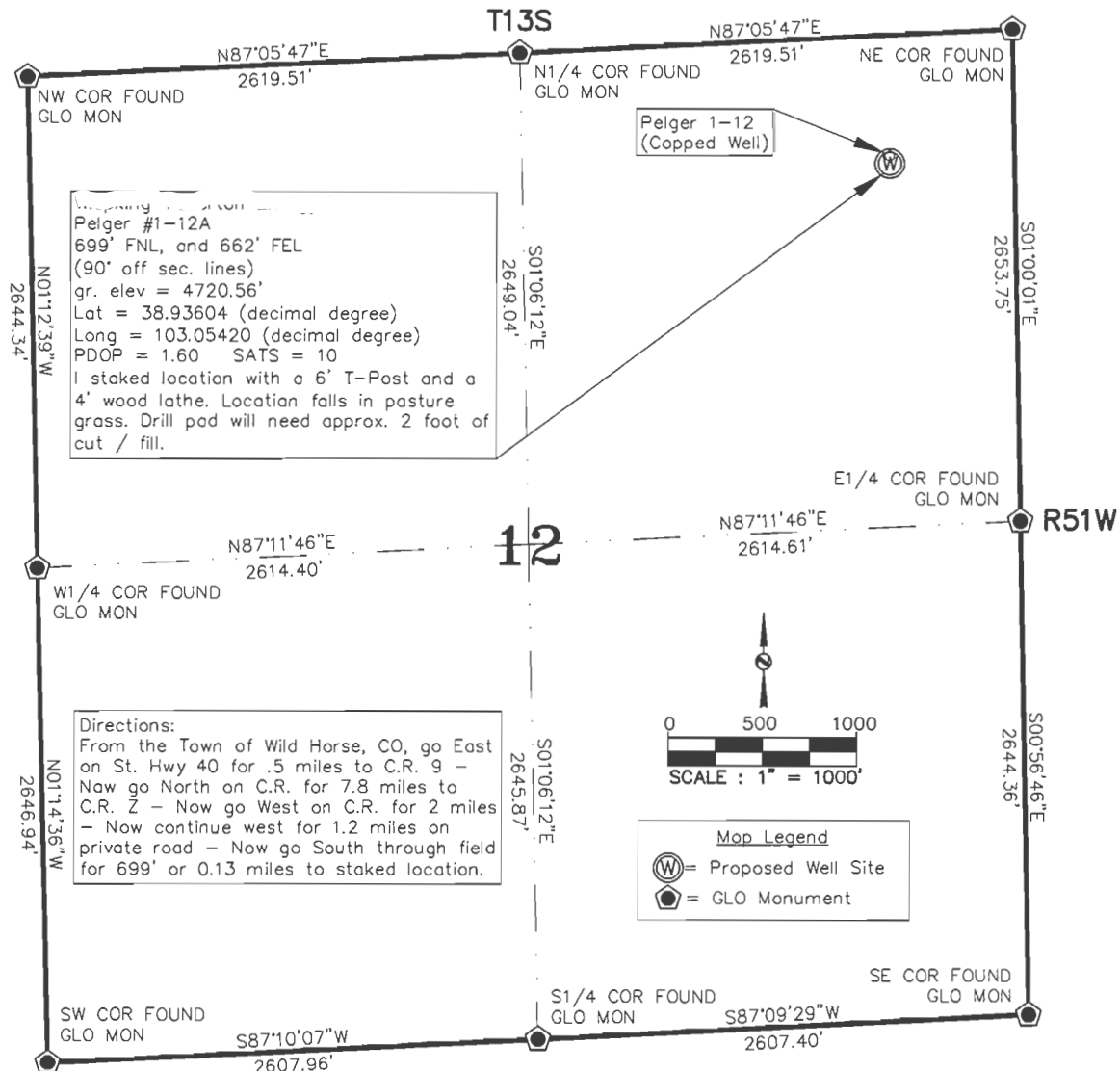
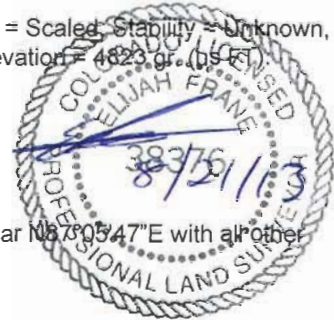
Basis of Elevation Spot: USGS BM = SINK, PID = JJ0902, H-Order = Second, V-Order = Scaled, Stability = Unknown, P-DOP = 1.60, Sats = 10, US NAD 83 CO-zone, Lat. = 38.93724, Long. = 103.09187, Elevation = 4823 gr. (bs-ft)

Notes: See Location Drawing for improvements.

The ground elevation at staked location = 4720.56' gr.

This drawing does not represent a monumented survey or Land Survey Plat.

Basis of Bearing: Bearings were determined based on the North line of Section 12 to bear N87°05'47"E with all other bearings contained herein relative thereto.





Physical Address: 345 Comanche St.
Mail to: Box 384, Kiowa, CO 80117
Ph. 303-621-8672 - Fax 303-621-7749
www.highprairiesurvey.com

Job # 12151 Pelger #1-12A

Inv # 2642

High Prairie Surveying of Kiowa, Colorado, in accordance with a request from **Ted Pagano of Investment Equipment PLC**, has determined the location of **Pelger #1-12A** to be **699 feet FNL**, and **662 feet FEL**, (90° off Section lines) of **SECTION 12**, Township **13S**, Range **51W** of the 6th Principal Meridian, **Cheyenne County**, Colorado.

Date: Staked on 08/12/13 drawn on 08/19/13.

Re: Staked by Elijah Frane

Drawn: Drawn by Dustin Cotter

Basis of Elevation Spot: USGS BM = SINK, PID = JJ0902, H-Order = Second, V-Order = Second, Stability = Unknown, P-DOP = 1.60, Sats = 10, US NAD 83 CO-zone, Lat. = 38.93724, Long. = 103.09187, Elevation = 4820.00 (in FT).

Notes: See Location Drawing for improvements.

The ground elevation at staked location = 4720.56' gr.

This drawing does not represent a monumented survey or Land Survey Plat.

Basis of Bearing: Bearings were determined based on the North line of Section 12 to 584' N87°05'47"E, with all other bearings contained herein relative thereto.

