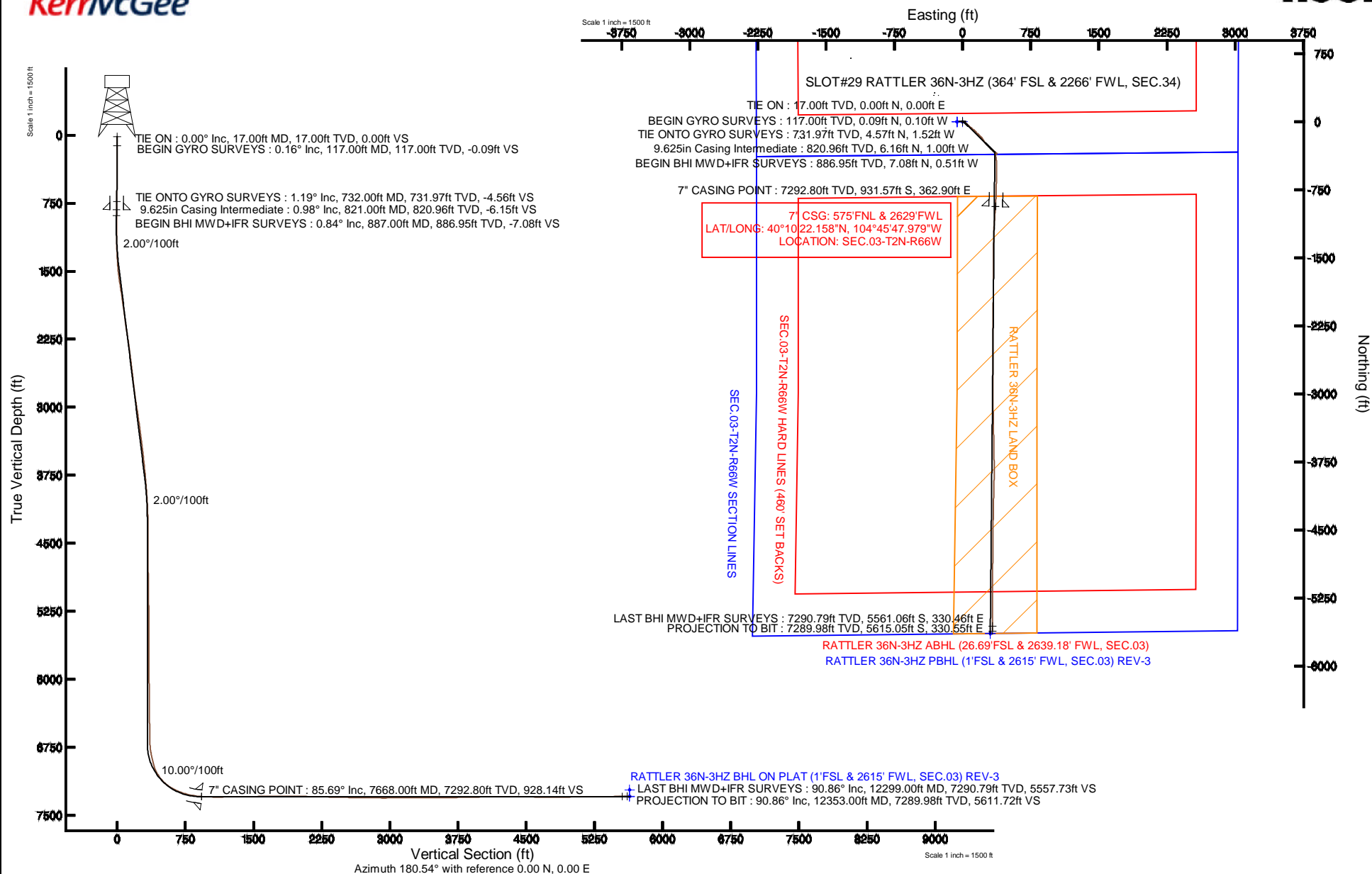


Location:	COLORADO	Slot:	SLOT#29 RATTLER 36N-3HZ (364' FSL & 2266' FWL, SEC.34)
Field:	WELD COUNTY (KERR MCGEE)	Well:	RATTLER 36N-3HZ
Facility:	SEC.34-T3N-R66W	Wellbore:	RATTLER 36N-3HZ PWB

True vertical depths are referenced to XTREME 8 (17' RKB) (RKB)	Grid System: NAD83 / Lambert Colorado SP, Northern Zone (501), US feet
Measured depths are referenced to XTREME 8 (17' RKB) (RKB)	North Reference: True north
XTREME 8 (17' RKB) (RKB) to Mean Sea Level: 5008 feet	Scale: True distance
Mean Sea Level to Mud line (At Slot: S102129 RATTLER 36N-3HZ (364' FSL & 2266' FWL, SEC.34): 0 feet	Depths are in feet
Coordinates are in feet referenced to Slot	Created by: robalo01 on 01/Sep/2013





Actual Wellpath Report

RATTLER 36N-3HZ AWP

Page 1 of 7



REFERENCE WELLPATH IDENTIFICATION

Operator	KERR-MCGEE OIL & GAS ONSHORE LP	Slot	SLOT#29 RATTLER 36N-3HZ (364' FSL & 2266' FWL, SEC.34)
Area	COLORADO	Well	RATTLER 36N-3HZ
Field	WELD COUNTY (KERR MCGEE)	Wellbore	RATTLER 36N-3HZ AWP
Facility	SEC.34-T3N-R66W		

REPORT SETUP INFORMATION

Projection System	NAD83 / Lambert Colorado SP, Northern Zone (501), US feet	Software System	WellArchitect® 4.0.0
North Reference	True	User	Robiale01
Scale	0.999958	Report Generated	11/Sep/2013 at 14:12
Convergence at slot	n/a	Database/Source file	WA_ANADARKO/RATTLER_36N-3HZ_AWP.xml

WELLPATH LOCATION

	Local coordinates		Grid coordinates		Geographic coordinates	
	North[ft]	East[ft]	Easting[US ft]	Northing[US ft]	Latitude	Longitude
Slot Location	-1555.90	1613.49	3205485.47	1307585.46	40°10'31.364"N	104°45'52.654"W
Facility Reference Pt			3203859.31	1309127.97	40°10'46.740"N	104°46'13.440"W
Field Reference Pt			3197771.84	1268891.29	40°04'09.600"N	104°47'36.000"W

WELLPATH DATUM

Calculation method	Minimum curvature	XTREME 8 (17' RKB) (RKB) to Facility Vertical Datum	5008.00ft
Horizontal Reference Pt	Slot	XTREME 8 (17' RKB) (RKB) to Mean Sea Level	5008.00ft
Vertical Reference Pt	XTREME 8 (17' RKB) (RKB)	XTREME 8 (17' RKB) (RKB) to Mud Line at Slot (SLOT#29 RATTLER 36N-3HZ (364' FSL & 2266' FWL, SEC.34))	5008.00ft
MD Reference Pt	XTREME 8 (17' RKB) (RKB)	Section Origin	N 0.00, E 0.00 ft
Field Vertical Reference	Mean Sea Level	Section Azimuth	180.54°



Actual Wellpath Report

RATTLER 36N-3HZ AWP

Page 2 of 7



REFERENCE WELLPATH IDENTIFICATION

Operator	KERR-MCGEE OIL & GAS ONSHORE LP	Slot	SLOT#29 RATTLER 36N-3HZ (364' FSL & 2266' FWL, SEC.34)
Area	COLORADO	Well	RATTLER 36N-3HZ
Field	WELD COUNTY (KERR MCGEE)	Wellbore	RATTLER 36N-3HZ AWP
Facility	SEC.34-T3N-R66W		

WELLPATH DATA (137 stations) † = interpolated/extrapolated station

MD [ft]	Inclination [°]	Azimuth [°]	TVD [ft]	Vert Sect [ft]	North [ft]	East [ft]	Latitude	Longitude	DLS [°/100ft]	Comments
0.00†	0.000	311.450	0.00	0.00	0.00	0.00	40°10'31.364"N	104°45'52.654"W	0.00	
17.00	0.000	311.450	17.00	0.00	0.00	0.00	40°10'31.364"N	104°45'52.654"W	0.00	TIE ON
117.00	0.160	311.450	117.00	-0.09	0.09	-0.10	40°10'31.365"N	104°45'52.655"W	0.16	BEGIN GYRO SURVEYS
217.00	0.380	319.140	217.00	-0.43	0.44	-0.43	40°10'31.368"N	104°45'52.659"W	0.22	
317.00	0.370	304.390	317.00	-0.86	0.87	-0.91	40°10'31.373"N	104°45'52.666"W	0.10	
417.00	0.390	298.880	416.99	-1.20	1.22	-1.47	40°10'31.376"N	104°45'52.673"W	0.04	
517.00	0.520	352.470	516.99	-1.81	1.83	-1.83	40°10'31.382"N	104°45'52.678"W	0.43	
617.00	0.690	0.070	616.99	-2.86	2.88	-1.89	40°10'31.392"N	104°45'52.678"W	0.19	
717.00	0.990	19.540	716.98	-4.28	4.30	-1.60	40°10'31.406"N	104°45'52.675"W	0.41	
732.00	1.190	13.900	731.97	-4.56	4.57	-1.52	40°10'31.409"N	104°45'52.674"W	1.51	TIE ONTO GYRO SURVEYS
887.00	0.840	33.180	886.95	-7.08	7.08	-0.51	40°10'31.434"N	104°45'52.661"W	0.31	BEGIN BHI MWD+IFR SURVEYS
979.00	1.220	94.190	978.94	-7.59	7.58	0.83	40°10'31.439"N	104°45'52.643"W	1.19	
1072.00	2.550	101.500	1071.88	-7.13	7.09	3.85	40°10'31.434"N	104°45'52.604"W	1.45	
1161.00	3.770	107.420	1160.75	-5.90	5.82	8.58	40°10'31.422"N	104°45'52.543"W	1.42	
1252.00	4.270	117.540	1251.52	-3.49	3.36	14.44	40°10'31.397"N	104°45'52.468"W	0.95	
1343.00	5.420	128.080	1342.20	0.66	-0.86	20.83	40°10'31.356"N	104°45'52.386"W	1.59	
1434.00	7.040	126.720	1432.66	6.57	-6.84	28.68	40°10'31.296"N	104°45'52.285"W	1.79	
1525.00	9.590	130.540	1522.70	14.74	-15.11	38.91	40°10'31.215"N	104°45'52.153"W	2.87	
1616.00	12.500	132.620	1612.00	26.22	-26.70	51.92	40°10'31.100"N	104°45'51.985"W	3.23	
1707.00	13.390	133.720	1700.69	40.03	-40.65	66.79	40°10'30.962"N	104°45'51.794"W	1.01	
1798.00	12.350	133.180	1789.40	53.83	-54.60	81.50	40°10'30.824"N	104°45'51.604"W	1.15	
1890.00	12.210	128.860	1879.30	66.53	-67.43	96.25	40°10'30.698"N	104°45'51.414"W	1.01	
1980.00	12.120	127.530	1967.28	78.12	-79.16	111.15	40°10'30.582"N	104°45'51.222"W	0.33	
2071.00	11.890	130.530	2056.29	89.89	-91.07	125.85	40°10'30.464"N	104°45'51.033"W	0.73	
2162.00	11.630	136.710	2145.38	102.54	-103.84	139.27	40°10'30.338"N	104°45'50.860"W	1.41	
2253.00	12.030	137.210	2234.45	116.05	-117.48	152.00	40°10'30.203"N	104°45'50.696"W	0.45	
2344.00	10.680	135.580	2323.66	128.92	-130.46	164.34	40°10'30.075"N	104°45'50.537"W	1.52	
2435.00	11.290	134.070	2413.00	141.02	-142.68	176.65	40°10'29.954"N	104°45'50.378"W	0.74	
2526.00	10.720	132.480	2502.32	152.81	-154.59	189.29	40°10'29.836"N	104°45'50.215"W	0.71	
2616.00	8.580	139.770	2591.05	163.50	-165.37	199.80	40°10'29.730"N	104°45'50.080"W	2.73	
2707.00	8.580	135.410	2681.03	173.43	-175.39	208.95	40°10'29.631"N	104°45'49.962"W	0.71	
2797.00	8.560	143.910	2770.03	183.54	-185.58	217.61	40°10'29.530"N	104°45'49.851"W	1.41	
2886.00	9.490	143.890	2857.93	194.74	-196.86	225.83	40°10'29.419"N	104°45'49.745"W	1.04	
2971.00	10.790	145.440	2941.60	206.88	-209.07	234.48	40°10'29.298"N	104°45'49.633"W	1.56	
3056.00	10.260	147.240	3025.17	219.71	-221.99	243.09	40°10'29.170"N	104°45'49.522"W	0.73	
3141.00	10.120	138.530	3108.83	231.59	-233.95	252.13	40°10'29.052"N	104°45'49.406"W	1.82	
3226.00	10.980	140.650	3192.39	243.35	-245.81	262.21	40°10'28.935"N	104°45'49.276"W	1.11	
3312.00	10.270	132.970	3276.92	254.81	-257.37	273.01	40°10'28.821"N	104°45'49.137"W	1.84	
3397.00	11.070	133.400	3360.45	265.47	-268.14	284.48	40°10'28.714"N	104°45'48.989"W	0.95	
3482.00	9.560	138.400	3444.08	276.26	-279.03	295.10	40°10'28.607"N	104°45'48.852"W	2.06	
3568.00	9.110	132.560	3528.94	286.11	-288.97	304.86	40°10'28.508"N	104°45'48.727"W	1.22	
3653.00	8.960	131.240	3612.89	294.94	-297.89	314.79	40°10'28.420"N	104°45'48.599"W	0.30	
3738.00	9.030	130.480	3696.84	303.53	-306.58	324.84	40°10'28.334"N	104°45'48.469"W	0.16	
3823.00	7.940	130.840	3780.91	311.62	-314.75	334.36	40°10'28.254"N	104°45'48.347"W	1.28	
3909.00	7.150	128.440	3866.16	318.75	-321.96	343.04	40°10'28.182"N	104°45'48.235"W	0.99	



Actual Wellpath Report

RATTLER 36N-3HZ AWP

Page 3 of 7



REFERENCE WELLPATH IDENTIFICATION

Operator	KERR-MCGEE OIL & GAS ONSHORE LP	Slot	SLOT#29 RATTLER 36N-3HZ (364' FSL & 2266' FWL, SEC.34)
Area	COLORADO	Well	RATTLER 36N-3HZ
Field	WELD COUNTY (KERR MCGEE)	Wellbore	RATTLER 36N-3HZ AWP
Facility	SEC.34-T3N-R66W		

WELLPATH DATA (137 stations) † = interpolated/extrapolated station

MD [ft]	Inclination [°]	Azimuth [°]	TVD [ft]	Vert Sect [ft]	North [ft]	East [ft]	Latitude	Longitude	DLS [°/100ft]	Comments
3994.00	6.570	129.870	3950.56	325.08	-328.37	350.92	40°10'28.119"N	104°45'48.133"W	0.71	
4080.00	4.700	133.770	4036.14	330.61	-333.96	357.24	40°10'28.064"N	104°45'48.052"W	2.22	
4165.00	3.150	132.640	4120.93	334.56	-337.95	361.47	40°10'28.024"N	104°45'47.997"W	1.83	
4250.00	1.570	152.290	4205.86	337.15	-340.56	363.73	40°10'27.999"N	104°45'47.968"W	2.06	
4335.00	0.510	292.510	4290.85	338.04	-341.45	363.92	40°10'27.990"N	104°45'47.966"W	2.34	
4676.00	2.270	104.200	4631.78	339.07	-342.53	369.07	40°10'27.979"N	104°45'47.899"W	0.81	
4762.00	1.690	134.570	4717.73	340.35	-343.83	371.62	40°10'27.966"N	104°45'47.867"W	1.37	
4847.00	0.410	200.610	4802.71	341.51	-345.00	372.41	40°10'27.955"N	104°45'47.856"W	1.85	
4932.00	0.710	170.780	4887.71	342.31	-345.80	372.39	40°10'27.947"N	104°45'47.857"W	0.48	
5017.00	0.430	98.180	4972.71	342.87	-346.37	372.79	40°10'27.941"N	104°45'47.852"W	0.84	
5102.00	1.850	133.150	5057.69	343.84	-347.35	374.10	40°10'27.931"N	104°45'47.835"W	1.79	
5273.00	2.600	130.750	5228.56	348.22	-351.77	379.06	40°10'27.888"N	104°45'47.771"W	0.44	
5358.00	1.110	157.770	5313.51	350.22	-353.79	380.83	40°10'27.868"N	104°45'47.748"W	1.99	
5443.00	0.640	277.790	5398.51	350.92	-354.49	380.67	40°10'27.861"N	104°45'47.750"W	1.80	
5528.00	1.440	283.070	5483.49	350.63	-354.18	379.16	40°10'27.864"N	104°45'47.769"W	0.95	
5613.00	1.320	276.310	5568.47	350.30	-353.84	377.15	40°10'27.867"N	104°45'47.795"W	0.24	
5699.00	1.220	281.180	5654.45	350.03	-353.55	375.26	40°10'27.870"N	104°45'47.820"W	0.17	
5869.00	0.400	249.530	5824.43	349.91	-353.41	372.93	40°10'27.872"N	104°45'47.850"W	0.53	
6040.00	1.490	243.630	5995.40	351.13	-354.60	370.38	40°10'27.860"N	104°45'47.883"W	0.64	
6210.00	0.990	228.160	6165.36	353.12	-356.56	367.31	40°10'27.840"N	104°45'47.922"W	0.35	
6551.00	0.590	167.310	6506.34	356.81	-360.24	365.50	40°10'27.804"N	104°45'47.945"W	0.26	
6721.00	1.200	190.020	6676.31	359.42	-362.85	365.38	40°10'27.778"N	104°45'47.947"W	0.41	
6764.00	4.330	182.960	6719.26	361.49	-364.91	365.22	40°10'27.758"N	104°45'47.949"W	7.31	
6807.00	6.190	175.320	6762.08	365.42	-368.85	365.32	40°10'27.719"N	104°45'47.948"W	4.61	
6849.00	10.040	173.210	6803.65	371.31	-374.74	365.94	40°10'27.661"N	104°45'47.940"W	9.19	
6892.00	11.880	174.820	6845.86	379.43	-382.87	366.78	40°10'27.580"N	104°45'47.929"W	4.34	
6935.00	13.590	172.050	6887.80	388.83	-392.28	367.88	40°10'27.487"N	104°45'47.915"W	4.22	
6977.00	13.840	167.870	6928.61	398.61	-402.08	369.62	40°10'27.391"N	104°45'47.892"W	2.43	
7020.00	18.590	170.120	6969.88	410.38	-413.87	371.88	40°10'27.274"N	104°45'47.863"W	11.14	
7062.00	24.510	173.600	7008.93	425.62	-429.14	374.00	40°10'27.123"N	104°45'47.836"W	14.41	
7105.00	30.850	176.540	7046.99	445.50	-449.03	375.66	40°10'26.927"N	104°45'47.815"W	15.08	
7148.00	36.660	178.810	7082.73	469.35	-472.89	376.59	40°10'26.691"N	104°45'47.803"W	13.82	
7191.00	42.550	180.340	7115.85	496.74	-500.28	376.77	40°10'26.420"N	104°45'47.800"W	13.88	
7233.00	48.510	180.670	7145.26	526.70	-530.24	376.51	40°10'26.124"N	104°45'47.804"W	14.20	
7276.00	54.330	180.710	7172.06	560.30	-563.84	376.10	40°10'25.792"N	104°45'47.809"W	13.54	
7318.00	59.230	181.760	7195.06	595.42	-598.95	375.33	40°10'25.445"N	104°45'47.819"W	11.85	
7361.00	63.370	181.860	7215.71	633.12	-636.64	374.14	40°10'25.073"N	104°45'47.834"W	9.63	
7404.00	67.060	181.930	7233.73	672.15	-675.66	372.85	40°10'24.687"N	104°45'47.851"W	8.58	
7446.00	70.550	181.800	7248.91	711.29	-714.79	371.58	40°10'24.300"N	104°45'47.867"W	8.31	
7489.00	73.940	181.300	7262.02	752.23	-755.72	370.47	40°10'23.896"N	104°45'47.881"W	7.96	
7532.00	77.590	181.400	7272.60	793.90	-797.38	369.49	40°10'23.484"N	104°45'47.894"W	8.49	
7575.00	79.580	182.420	7281.11	836.03	-839.50	368.08	40°10'23.068"N	104°45'47.912"W	5.18	
7617.00	82.340	183.120	7287.71	877.47	-880.93	366.08	40°10'22.659"N	104°45'47.938"W	6.77	
7634.00	83.950	183.750	7289.73	894.33	-897.78	365.07	40°10'22.492"N	104°45'47.951"W	10.16	
7668.00†	85.687	183.584	7292.80	928.14	-931.57	362.90	40°10'22.158"N	104°45'47.979"W	5.13	7" CASING POINT



Actual Wellpath Report

RATTLER 36N-3HZ AWP

Page 4 of 7



REFERENCE WELLPATH IDENTIFICATION

Operator	KERR-MCGEE OIL & GAS ONSHORE LP	Slot	SLOT#29 RATTLER 36N-3HZ (364' FSL & 2266' FWL, SEC.34)
Area	COLORADO	Well	RATTLER 36N-3HZ
Field	WELD COUNTY (KERR MCGEE)	Wellbore	RATTLER 36N-3HZ AWP
Facility	SEC.34-T3N-R66W		

WELLPATH DATA (137 stations)

MD [ft]	Inclination [°]	Azimuth [°]	TVD [ft]	Vert Sect [ft]	North [ft]	East [ft]	Latitude	Longitude	DLS [°/100ft]	Comments
7716.00	88.140	183.350	7295.39	976.00	-979.41	360.00	40°10'21.685"N	104°45'48.016"W	5.13	
7758.00	88.400	184.100	7296.66	1017.92	-1021.30	357.28	40°10'21.271"N	104°45'48.052"W	1.89	
7843.00	90.340	184.190	7297.59	1102.74	-1106.07	351.13	40°10'20.434"N	104°45'48.131"W	2.28	
7929.00	90.120	182.130	7297.25	1188.64	-1191.93	346.39	40°10'19.585"N	104°45'48.192"W	2.41	
8014.00	90.680	181.460	7296.65	1273.62	-1276.89	343.73	40°10'18.746"N	104°45'48.226"W	1.03	
8099.00	90.680	180.040	7295.64	1358.61	-1361.87	342.62	40°10'17.906"N	104°45'48.240"W	1.67	
8184.00	90.960	180.420	7294.43	1443.60	-1446.86	342.28	40°10'17.066"N	104°45'48.245"W	0.56	
8269.00	91.480	180.520	7292.62	1528.58	-1531.84	341.58	40°10'16.226"N	104°45'48.254"W	0.62	
8354.00	90.270	180.310	7291.32	1613.57	-1616.82	340.96	40°10'15.386"N	104°45'48.262"W	1.44	
8440.00	90.180	180.280	7290.98	1699.57	-1702.82	340.52	40°10'14.537"N	104°45'48.267"W	0.11	
8525.00	90.000	179.840	7290.85	1784.57	-1787.82	340.43	40°10'13.697"N	104°45'48.269"W	0.56	
8610.00	91.080	181.030	7290.05	1869.56	-1872.81	339.79	40°10'12.857"N	104°45'48.277"W	1.89	
8695.00	88.980	180.800	7290.00	1954.55	-1957.80	338.43	40°10'12.017"N	104°45'48.294"W	2.49	
8781.00	89.010	180.940	7291.51	2040.54	-2043.77	337.12	40°10'11.167"N	104°45'48.311"W	0.17	
8866.00	88.370	180.410	7293.45	2125.51	-2128.75	336.12	40°10'10.328"N	104°45'48.324"W	0.98	
8951.00	89.170	180.290	7295.28	2210.49	-2213.72	335.60	40°10'09.488"N	104°45'48.331"W	0.95	
9036.00	88.770	180.200	7296.81	2295.48	-2298.71	335.24	40°10'08.648"N	104°45'48.336"W	0.48	
9121.00	88.770	179.970	7298.63	2380.46	-2383.69	335.11	40°10'07.808"N	104°45'48.337"W	0.27	
9292.00	88.520	180.130	7302.68	2551.40	-2554.64	334.97	40°10'06.119"N	104°45'48.339"W	0.17	
9377.00	88.830	180.550	7304.64	2636.38	-2639.62	334.46	40°10'05.279"N	104°45'48.346"W	0.61	
9463.00	89.780	179.850	7305.68	2722.37	-2725.61	334.16	40°10'04.429"N	104°45'48.350"W	1.37	
9633.00	89.260	179.470	7307.11	2892.34	-2895.60	335.17	40°10'02.750"N	104°45'48.337"W	0.38	
9718.00	90.590	179.400	7307.22	2977.32	-2980.59	336.01	40°10'01.910"N	104°45'48.326"W	1.57	
9803.00	91.050	179.670	7306.00	3062.30	-3065.58	336.70	40°10'01.070"N	104°45'48.317"W	0.63	
9974.00	90.920	179.040	7303.06	3233.24	-3236.54	338.62	40°09'59.380"N	104°45'48.292"W	0.38	
10144.00	88.830	178.740	7303.43	3403.16	-3406.50	341.92	40°09'57.701"N	104°45'48.250"W	1.24	
10230.00	89.420	178.390	7304.75	3489.10	-3492.46	344.07	40°09'56.851"N	104°45'48.222"W	0.80	
10315.00	91.020	179.310	7304.42	3574.06	-3577.44	345.78	40°09'56.012"N	104°45'48.200"W	2.17	
10400.00	90.490	179.120	7303.30	3659.03	-3662.43	346.94	40°09'55.172"N	104°45'48.185"W	0.66	
10570.00	91.290	179.740	7300.66	3828.97	-3832.40	348.63	40°09'53.492"N	104°45'48.163"W	0.60	
10741.00	91.200	181.640	7296.94	3999.92	-4003.33	346.57	40°09'51.803"N	104°45'48.190"W	1.11	
10911.00	91.200	181.190	7293.38	4169.87	-4173.25	342.37	40°09'50.124"N	104°45'48.244"W	0.26	
10996.00	89.820	181.320	7292.63	4254.85	-4258.22	340.51	40°09'49.284"N	104°45'48.268"W	1.63	
11082.00	88.830	181.010	7293.64	4340.84	-4344.19	338.76	40°09'48.435"N	104°45'48.291"W	1.21	
11167.00	88.920	181.040	7295.31	4425.82	-4429.16	337.24	40°09'47.595"N	104°45'48.310"W	0.11	
11252.00	89.220	180.670	7296.69	4510.81	-4514.14	335.98	40°09'46.755"N	104°45'48.327"W	0.56	
11338.00	89.900	180.730	7297.35	4596.81	-4600.13	334.93	40°09'45.905"N	104°45'48.340"W	0.79	
11508.00	89.660	180.200	7298.00	4766.80	-4770.13	333.55	40°09'44.225"N	104°45'48.358"W	0.34	
11593.00	89.880	180.500	7298.34	4851.80	-4855.12	333.03	40°09'43.385"N	104°45'48.365"W	0.44	
11678.00	90.680	180.980	7297.93	4936.80	-4940.12	331.93	40°09'42.546"N	104°45'48.379"W	1.10	
11764.00	90.740	180.120	7296.86	5022.79	-5026.10	331.10	40°09'41.696"N	104°45'48.389"W	1.00	
11934.00	90.560	179.540	7294.93	5192.77	-5196.09	331.61	40°09'40.016"N	104°45'48.383"W	0.36	
12019.00	90.620	180.580	7294.06	5277.76	-5281.09	331.52	40°09'39.176"N	104°45'48.384"W	1.23	
12105.00	90.250	180.020	7293.41	5363.76	-5367.08	331.07	40°09'38.326"N	104°45'48.390"W	0.78	
12190.00	90.950	180.400	7292.52	5448.75	-5452.08	330.76	40°09'37.486"N	104°45'48.394"W	0.94	



Actual Wellpath Report

RATTLER 36N-3HZ AWP

Page 5 of 7



REFERENCE WELLPATH IDENTIFICATION

Operator	KERR-MCGEE OIL & GAS ONSHORE LP	Slot	SLOT#29 RATTLER 36N-3HZ (364' FSL & 2266' FWL, SEC.34)
Area	COLORADO	Well	RATTLER 36N-3HZ
Field	WELD COUNTY (KERR MCGEE)	Wellbore	RATTLER 36N-3HZ AWP
Facility	SEC.34-T3N-R66W		

WELLPATH DATA (137 stations)

MD [ft]	Inclination [°]	Azimuth [°]	TVD [ft]	Vert Sect [ft]	North [ft]	East [ft]	Latitude	Longitude	DLS [°/100ft]	Comments
12299.00	90.860	179.910	7290.79	5557.73	-5561.06	330.46	40°09'36.409"N	104°45'48.398"W	0.46	LAST BHI MWD+IFR SURVEYS
12353.00	90.860	179.910	7289.98	5611.72	-5615.05	330.55	40°09'35.876"N	104°45'48.397"W	0.00	PROJECTION TO BIT

HOLE & CASING SECTIONS - Ref Wellbore: RATTLER 36N-3HZ AWP Ref Wellpath: RATTLER 36N-3HZ AWP

String/Diameter	Start MD [ft]	End MD [ft]	Interval [ft]	Start TVD [ft]	End TVD [ft]	Start N/S [ft]	Start E/W [ft]	End N/S [ft]	End E/W [ft]
13.5in Open Hole	17.00	821.00	804.00	17.00	820.96	0.00	0.00	6.16	-1.00
9.625in Casing Intermediate	17.00	821.00	804.00	17.00	820.96	0.00	0.00	6.16	-1.00
8.75in Open Hole	821.00	7680.00	6859.00	820.96	7293.64	6.16	-1.00	-943.51	362.16
7in Casing Intermediate	17.00	7668.00	7651.00	17.00	7292.80	0.00	0.00	-931.57	362.90
6.125in Open Hole	7680.00	12353.00	4673.00	7293.64	7289.98	-943.51	362.16	-5615.05	330.55



Actual Wellpath Report

RATTLER 36N-3HZ AWP

Page 6 of 7



REFERENCE WELLPATH IDENTIFICATION

Operator	KERR-MCGEE OIL & GAS ONSHORE LP	Slot	SLOT#29 RATTLER 36N-3HZ (364' FSL & 2266' FWL, SEC.34)
Area	COLORADO	Well	RATTLER 36N-3HZ
Field	WELD COUNTY (KERR MCGEE)	Wellbore	RATTLER 36N-3HZ AWB
Facility	SEC.34-T3N-R66W		

TARGETS

Name	MD [ft]	TVD [ft]	North [ft]	East [ft]	Grid East [US ft]	Grid North [US ft]	Latitude	Longitude	Shape
SEC.03-T2N-R66W HARD LINES (460' SET BACKS)		5008.00	-0.71	-60.08	3205425.40	1307584.26	40°10'31.357"N	104°45'53.428"W	polygon
SEC.03-T2N-R66W SECTION LINES		5008.00	-0.71	-60.08	3205425.40	1307584.26	40°10'31.357"N	104°45'53.428"W	polygon
SEC.34-T3N-R66W HARD LINES (460' SET BACKS)		5008.00	-0.71	-60.08	3205425.40	1307584.26	40°10'31.357"N	104°45'53.428"W	polygon
SEC.34-T3N-R66W SECTION LINES		5008.00	-0.71	-60.08	3205425.40	1307584.26	40°10'31.357"N	104°45'53.428"W	polygon
CANNON RED W3-10		7053.00	-3472.80	900.36	3206414.56	1304120.40	40°09'57.046"N	104°45'41.057"W	circle
RATTLER 36N-3HZ BHL ON PLAT (1'FSL & 2615' FWL, SEC.34) REV-1		7218.00	-5640.74	306.37	3205838.60	1301947.71	40°09'35.622"N	104°45'48.708"W	point
RATTLER 36N-3HZ LAND BOX		7218.00	0.00	0.00	3205485.47	1307585.46	40°10'31.364"N	104°45'52.654"W	polygon
CANNON RED W3-12		7237.00	-3651.92	-1875.81	3203640.09	1303918.27	40°09'55.275"N	104°46'16.816"W	circle
CANNON RED W3-11		7271.00	-3452.38	-410.02	3205104.12	1304129.96	40°09'57.247"N	104°45'57.935"W	circle
RATTLER 36N-3HZ BHL ON PLAT (1'FSL & 2615' FWL, SEC.03) REV-2		7288.00	-5640.74	306.37	3205838.60	1301947.71	40°09'35.622"N	104°45'48.708"W	point
RATTLER 36N-3HZ BHL ON PLAT (1'FSL & 2615' FWL, SEC.03) REV-3		7293.00	-5640.74	306.37	3205838.60	1301947.71	40°09'35.622"N	104°45'48.708"W	point
CANNON RED W3-15		7318.00	-5124.70	889.42	3206417.32	1302468.54	40°09'40.721"N	104°45'41.198"W	circle
CANNON RED W3-4D		7347.00	-3909.21	1961.24	3207478.97	1303692.83	40°09'52.732"N	104°45'27.392"W	circle

WELLPATH COMPOSITION - Ref Wellbore: RATTLER 36N-3HZ AWB Ref Wellpath: RATTLER 36N-3HZ AWP

Start MD [ft]	End MD [ft]	Positional Uncertainty Model	Log Name/Comment	Wellbore
17.00	732.00	Generic gyro - continuous (Standard)	MS WIRELINE GYRO SURVEYS <117-732>	RATTLER 36N-3HZ AWB
732.00	7634.00	NaviTrak (MAGCORR,IFR)	BHI NAVITRAK MWD+IFR 8.75" HOLE <887-7634>	RATTLER 36N-3HZ AWB
7634.00	12299.00	NaviTrak (MAGCORR,IFR)	BHI NAVITRAK MWD+IFR 6 1/8" HOLE <7716-12299>	RATTLER 36N-3HZ AWB
12299.00	12353.00	Blind Drilling (std)	Projection to bit	RATTLER 36N-3HZ AWB



Actual Wellpath Report

RATTLER 36N-3HZ AWP

Page 7 of 7



REFERENCE WELLPATH IDENTIFICATION

Operator	KERR-MCGEE OIL & GAS ONSHORE LP	Slot	SLOT#29 RATTLER 36N-3HZ (364' FSL & 2266' FWL, SEC.34)
Area	COLORADO	Well	RATTLER 36N-3HZ
Field	WELD COUNTY (KERR MCGEE)	Wellbore	RATTLER 36N-3HZ AWP
Facility	SEC.34-T3N-R66W		

WELLPATH COMMENTS

MD [ft]	Inclination [°]	Azimuth [°]	TVD [ft]	Comment
17.00	0.000	311.450	17.00	TIE ON
117.00	0.160	311.450	117.00	BEGIN GYRO SURVEYS
732.00	1.190	13.900	731.97	TIE ONTO GYRO SURVEYS
887.00	0.840	33.180	886.95	BEGIN BHI MWD+IFR SURVEYS
7668.00	85.687	183.584	7292.80	7" CASING POINT
12299.00	90.860	179.910	7290.79	LAST BHI MWD+IFR SURVEYS
12353.00	90.860	179.910	7289.98	PROJECTION TO BIT