

Crew										
Name	Arrive	Depart		Name	Arrive	Depart		Name	Arrive	Depart
	Wellsite	Wellsite			Wellsite	Wellsite			Wellsite	Wellsite
Nicholas Roosen	19/Jul/2013	27/Jul/2013		Gregory Dore	24/Jul/2013	27/Jul/2013		Kevin Sheridan	19/Jul/2013	24/Jul/2013

Mud Properties Record

Date / Time		LWD Run No.	Measured Depth (ft.)	Mud Type	Density (ppg)	Viscosity (cps)	pH	Fluid Loss (cc)	Oil / Water	Source	Total Chlorides (ppm)	K+ (%)
23/Jul/2013	07:31	2	7345.0	Water Based Mud	10.0	41	7.5	N/A	N/A	Flowline	2100	N/A
24/Jul/2013	7:33	2	7680.0	Water Based Mud	9.7	35	7.0	N/A	N/A	Flowline	1900	N/A
26/Jul/2013	7:30	3	9428.0	Water Based Mud	10.2	41	7.0	N/A	N/A	Flowline	2000	N/A
26/Jul/2013	17:30	3	10900.0	Water Based Mud	10.3	41	7.0	N/A	N/A	Flowline	2300	N/A

Mnemonics

Curve	Description	Units
GRAX	Gamma Ray Apparent, 0.5 ft. Avg	API
GRIX	Gamma Ray Data Density	points
GRTX	Gamma Time Since Drilled	min
TCDX	Downhole Temperature	degF
ROP_AVG	Rate of Penetration, 3.0 ft. Avg	ft/hr
WOB_AVG	Surface Weight on Bit, 1.0 ft. Avg	klbs
GRSI	Gamma Ray Sliding Indicator	unitless

Equipment and Service Data

LWD Run No.	Tool	Serial Number	Measurement	Bit Offset (ft.)	Max O.D. (in.)	Min I.D. (in.)
1	DIR	12011873	Directional	46.14	6.750	4.250
1	SRIG	12622668	Gamma	42.89	6.750	4.250
2	DIR	12011873	Directional	43.45	6.750	4.250
2	SRIG	12622668	Gamma	40.20	6.750	4.250
3	DIR	12373461	Directional	51.06	4.750	2.688
3	SRIG	12041110	Gamma	47.68	2.688	2.688

Service and Tool Mnemonics

Mnemonic	Name	Description
DIR	Directional	Wellbore directional survey
SRIG	Inclination and Gamma	Probe based gamma ray and inclination module

Comments

<p>(1) Baker Hughes INTEQ run 1 and 2, utilized 6 1/2 inch NaviGamma services (Gamma Ray and Directional) behind an 8 3/4 inch bit and steerable assembly from 842 to 7680 feet MD (842 to 7294 feet TVD)</p> <p>(2) Baker Hughes INTEQ run 3 utilized 4 3/4 inch NaviGamma services (Gamma Ray, Directional) behind a 6 1/8 inch bit and steerable assembly from 7680 to 12353 feet MD (7294 to 7290 feet TVD)</p> <p>(3) A sliding indicator is shown to the right edge of track 1 as a heavy line.</p>

Remarks

Number	Measured Depth (m.)	Hole Section (in.)	LWD Run No.	Remark
1	6950	8.500	1	The interval from 6940 to 6983 feet MD (6893 to 6934 feet TVD) was logged up to 26 hours after being drilled due to a trip out of the hole to pick up higher degree bend motor and new bit, build rates were lower than needed.
2	7660	8.500	1	The interval from 7640 to 7680 feet MD (7290 to 7294 feet TVD) was logged up to 60 hours after being drilled due to a trip out of the hole for casing and cement operations and picking up the lateral assembly.
3	12280	6.125	2	The interval from 12305 to 12353 feet MD (7291 to 7290 feet TVD) was not logged due to sensor offsets to bit at TD.

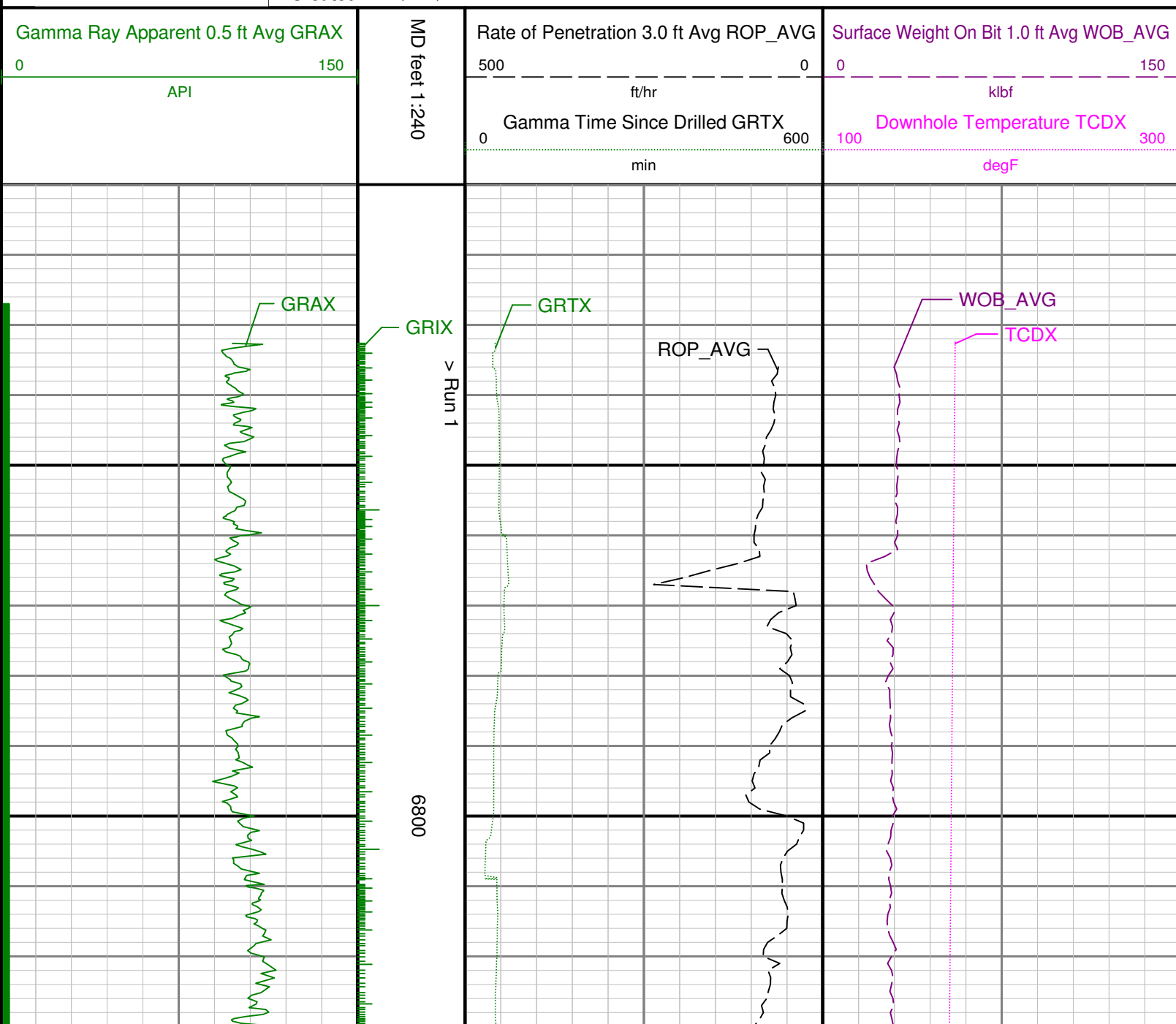


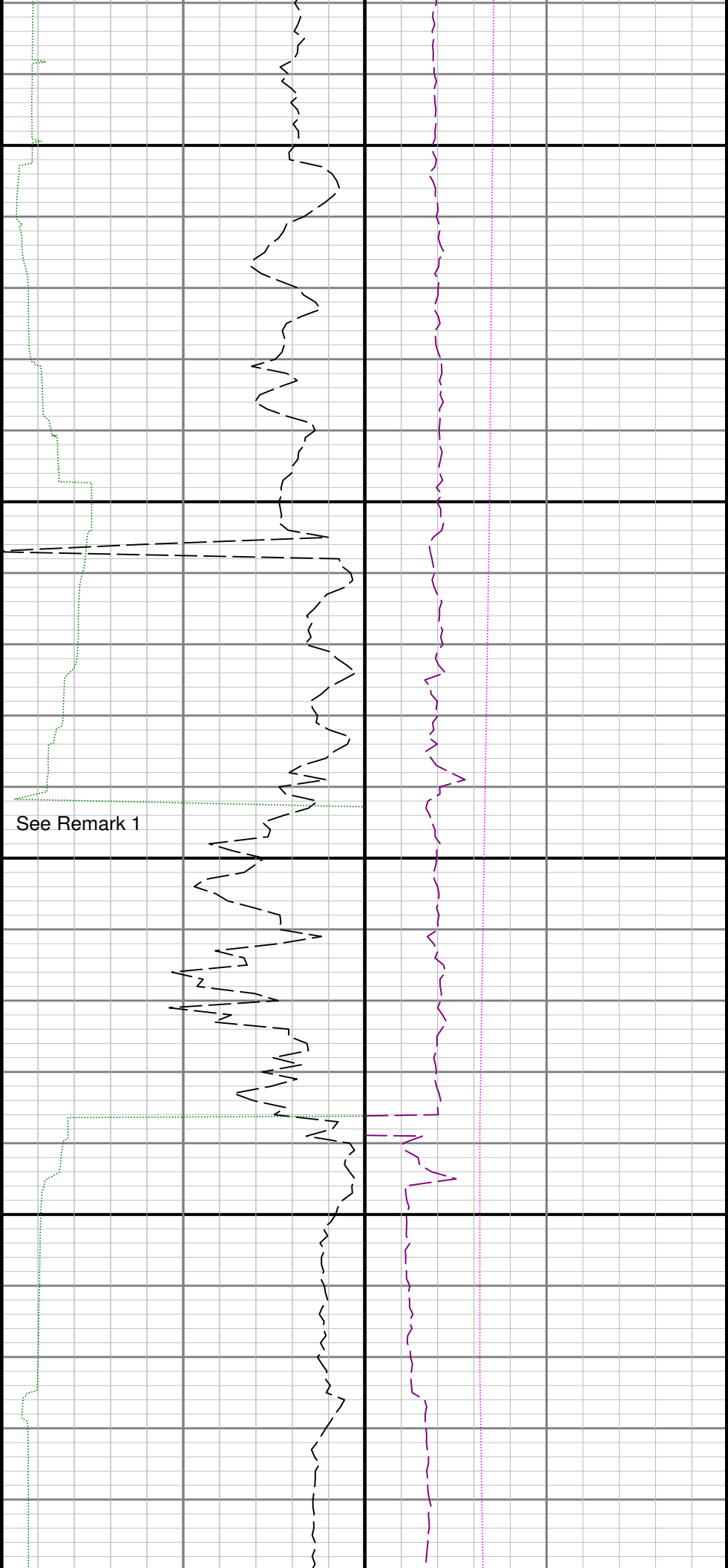
Company : Anadarko E&P

Well : Rattler 36N-3HZ

Interval : 6710.00 - 12370.00 feet

Created : 27/Jul/2013 4:35:59 AM



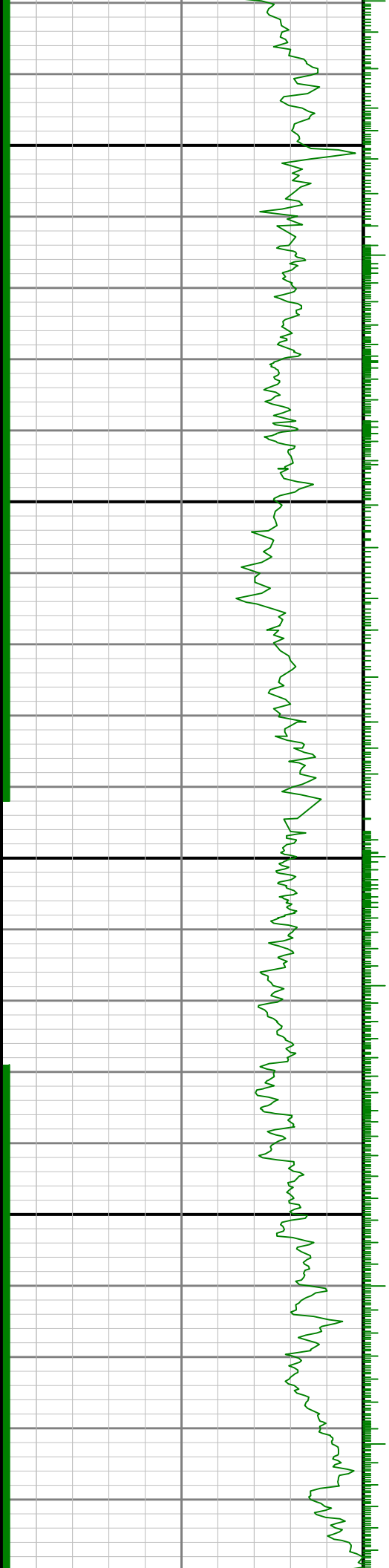


See Remark 1

6900

Run 1 < > Run 2

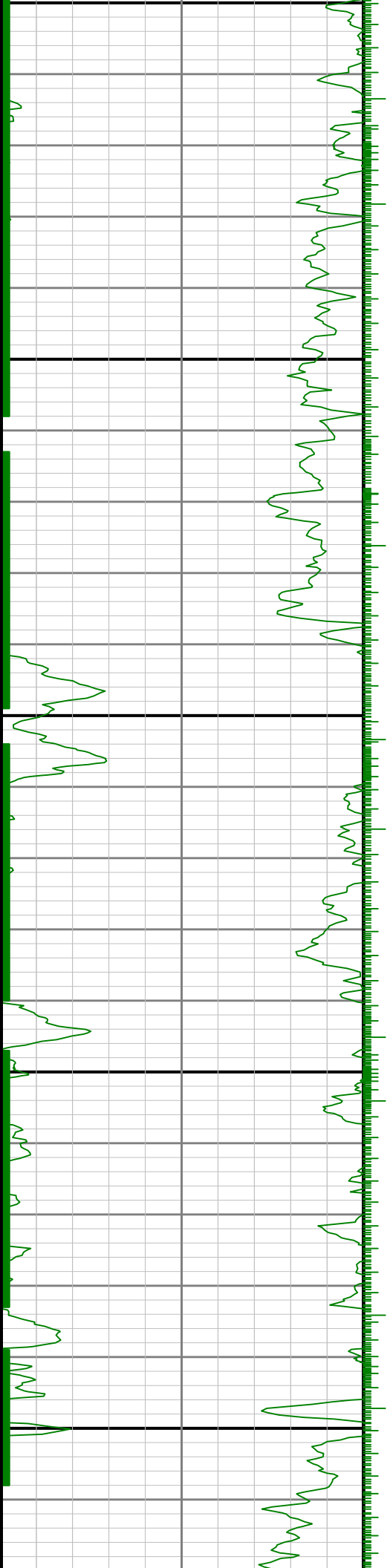
7000

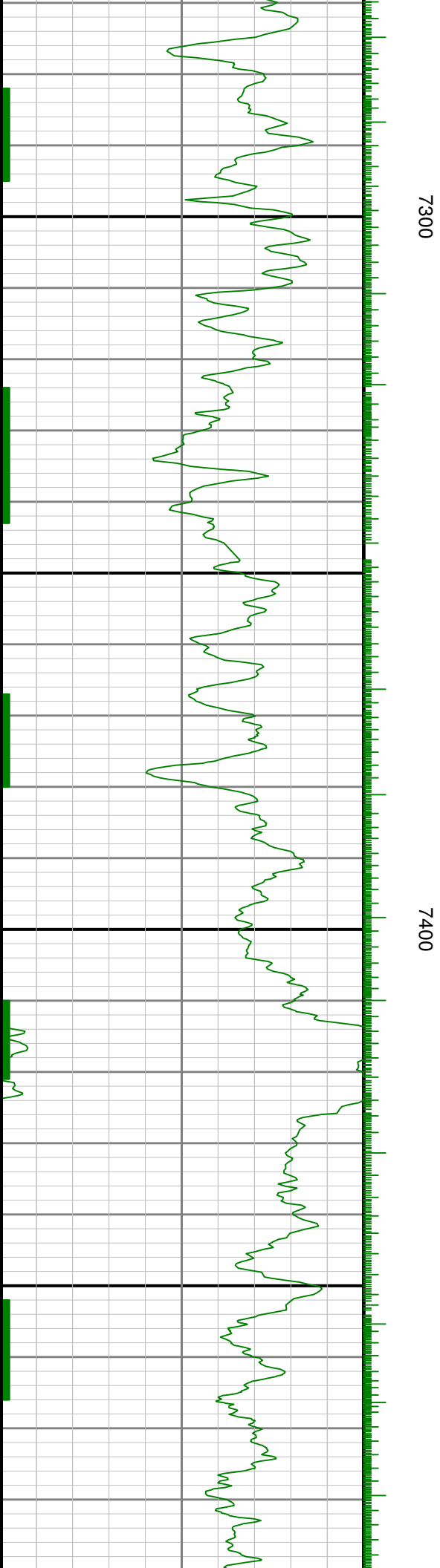
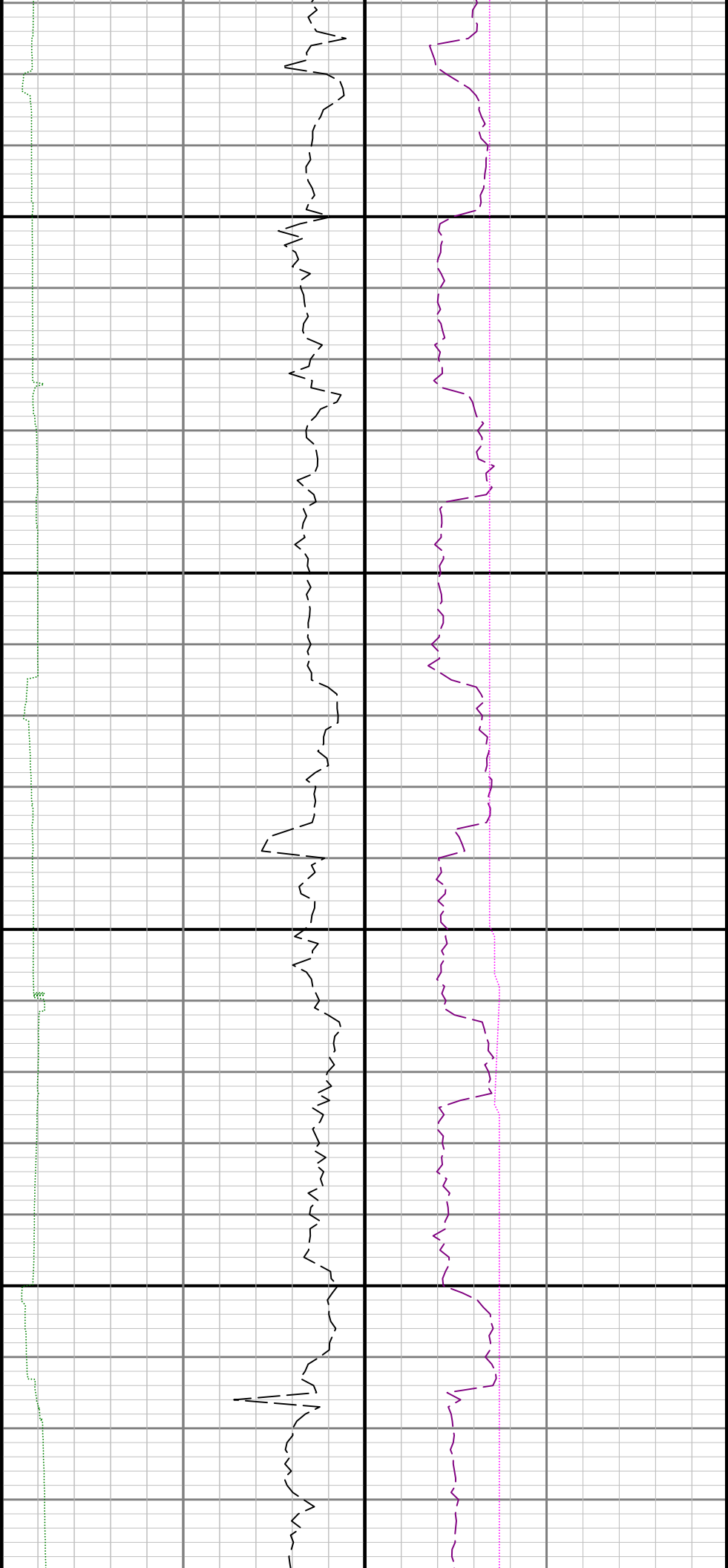


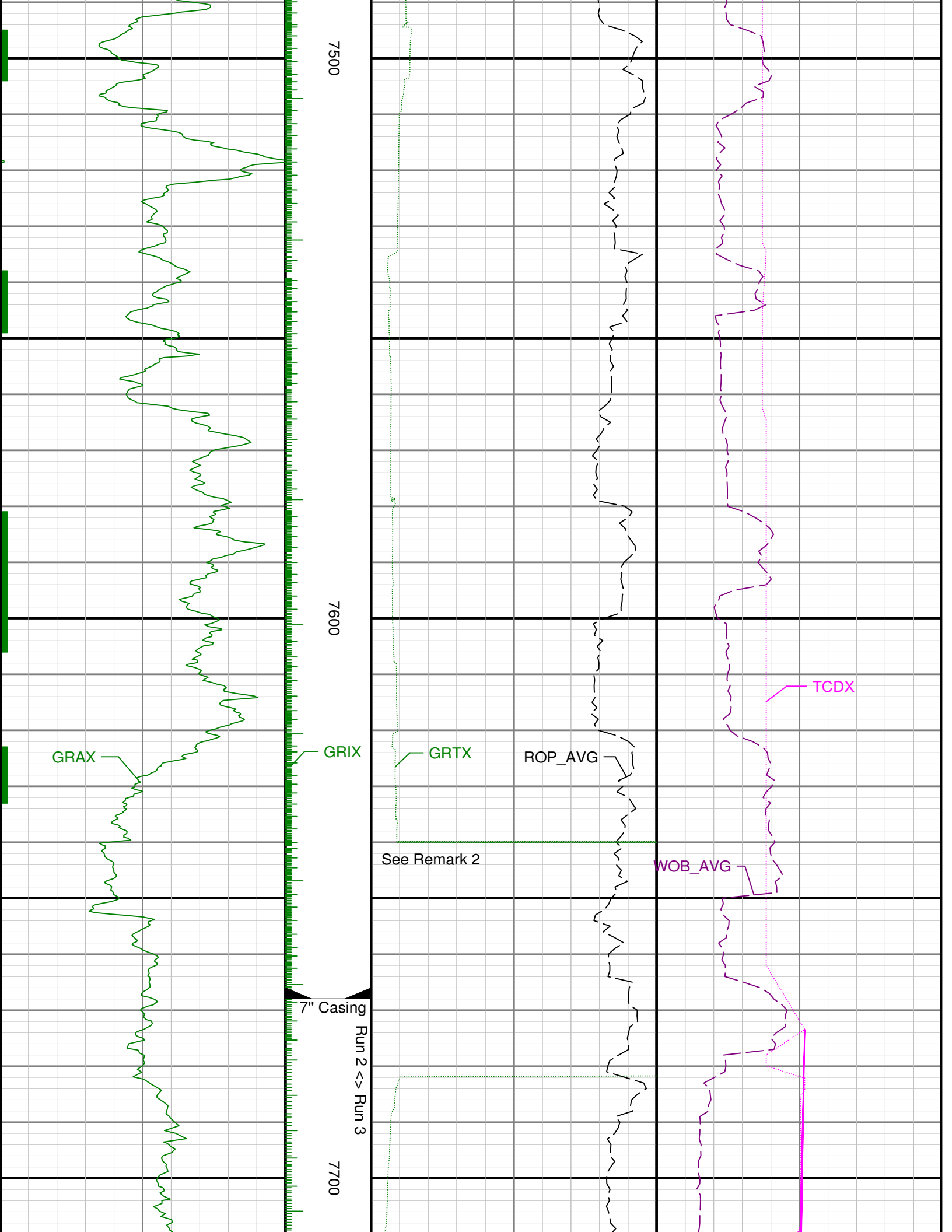


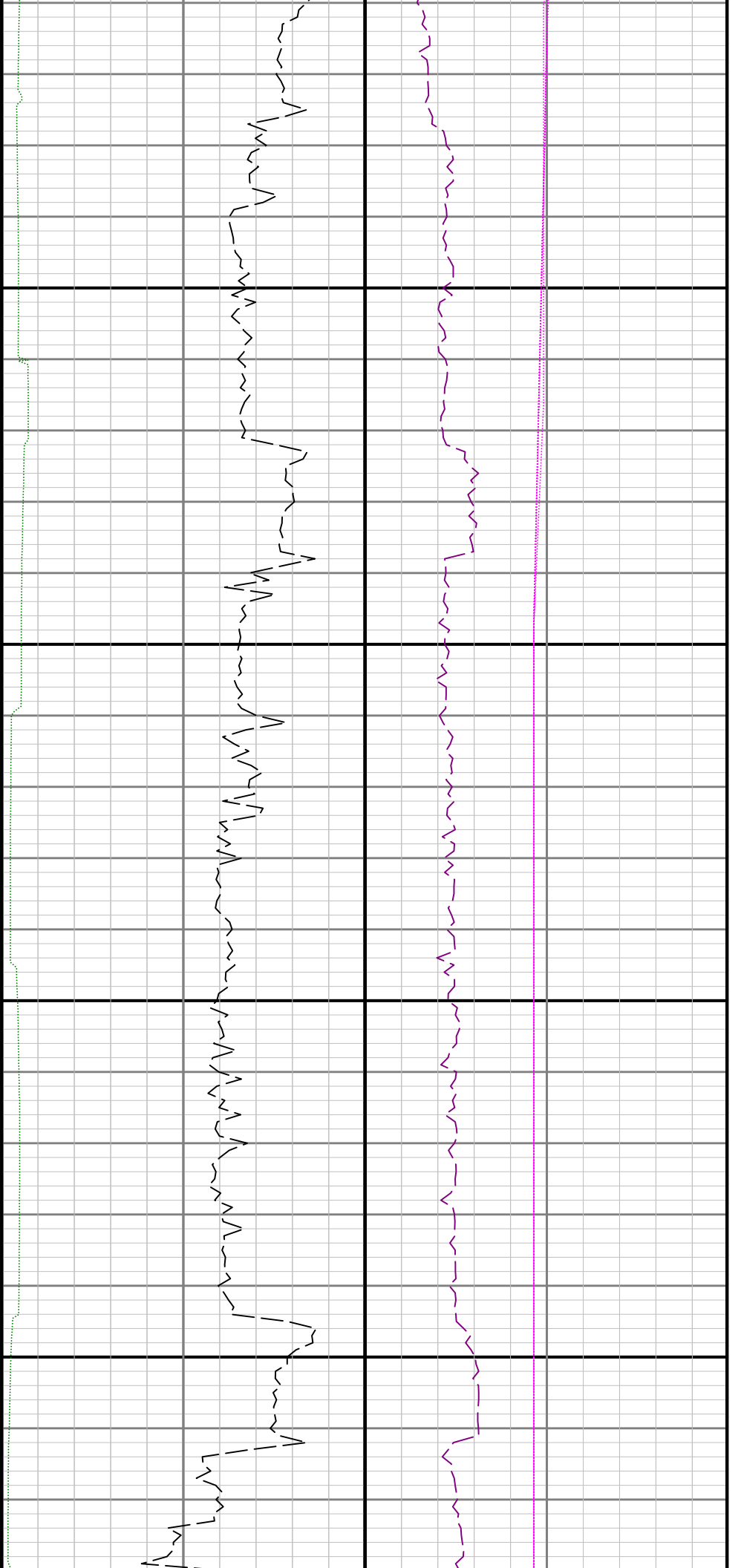
7100

7200



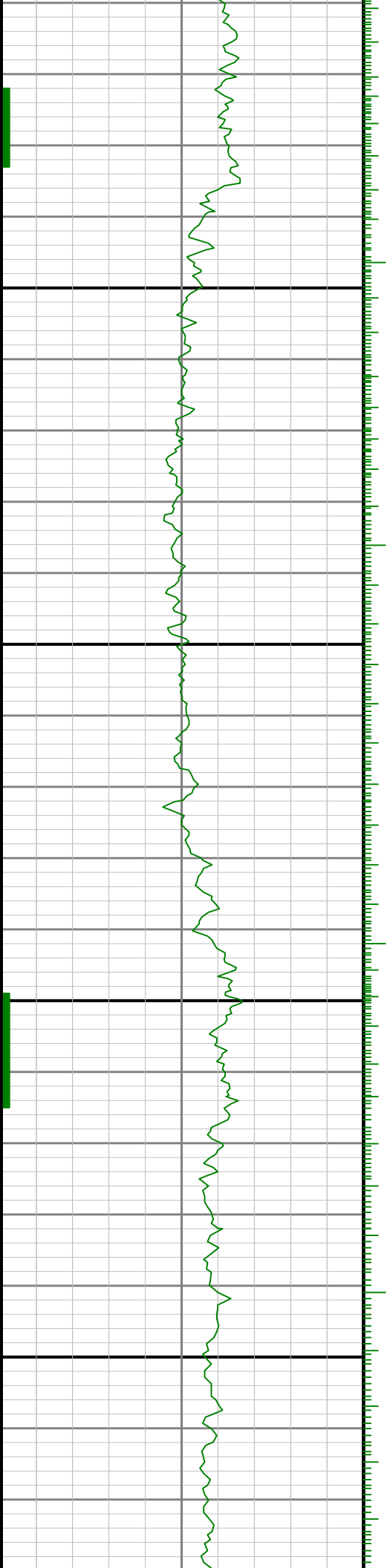


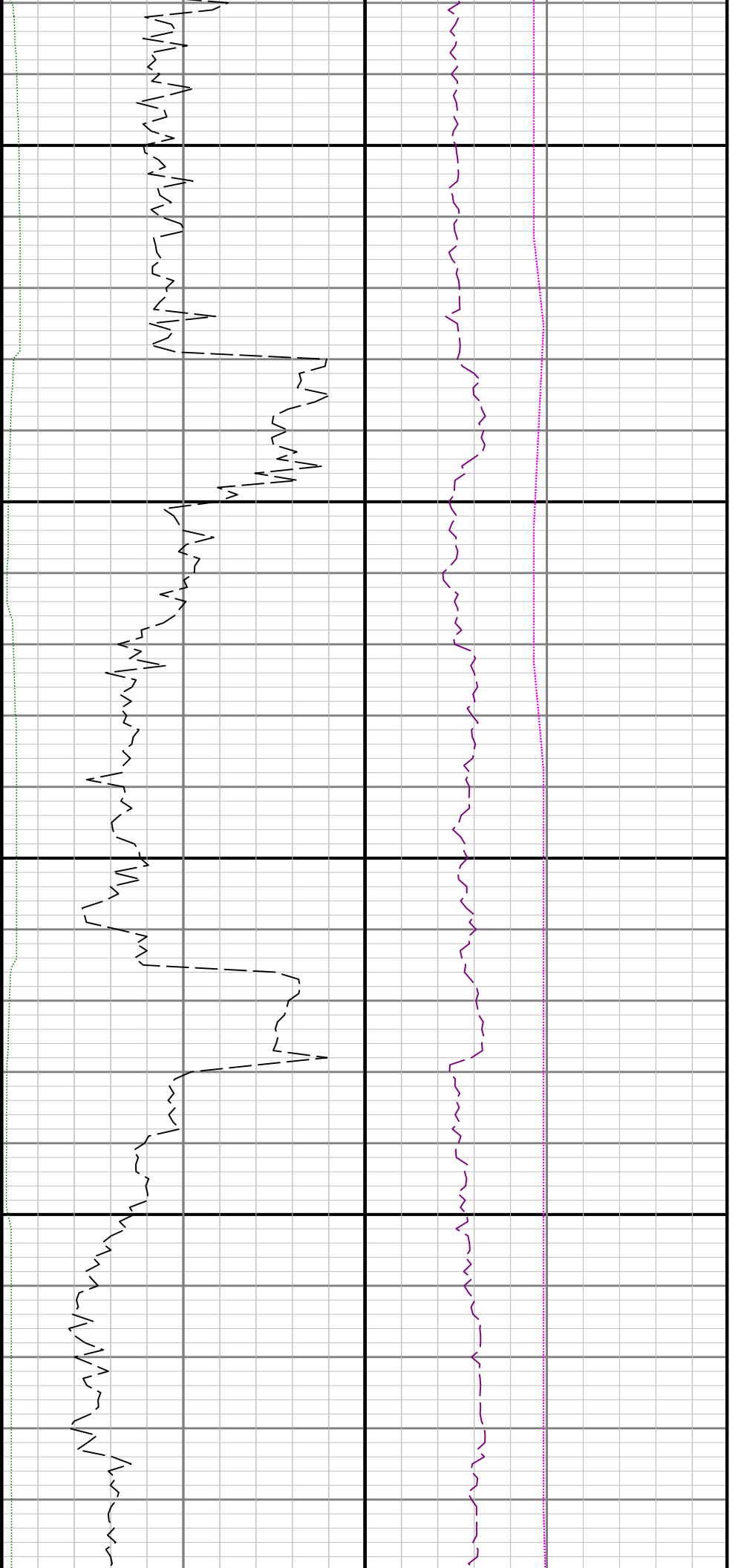




7800

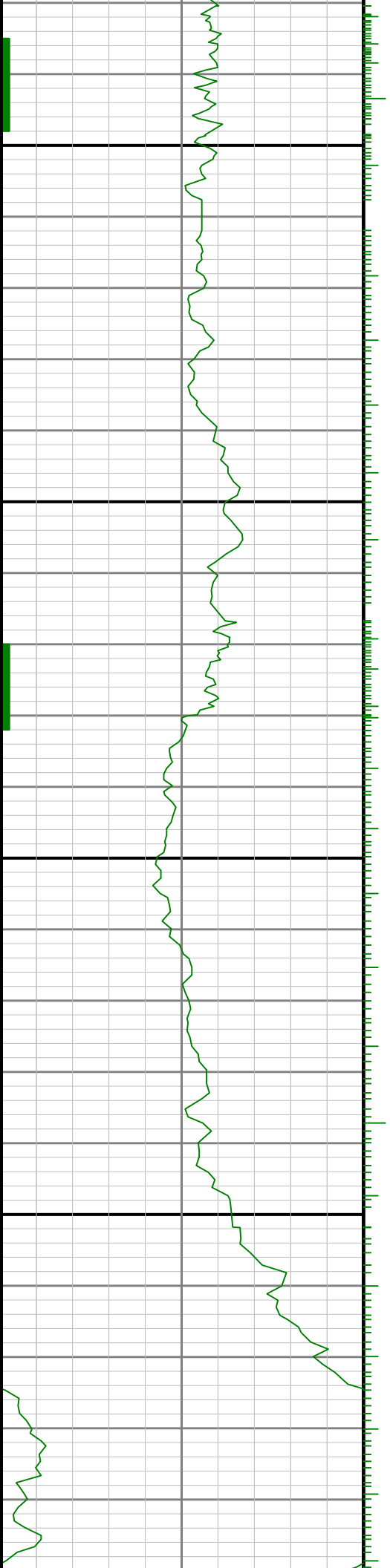
7900

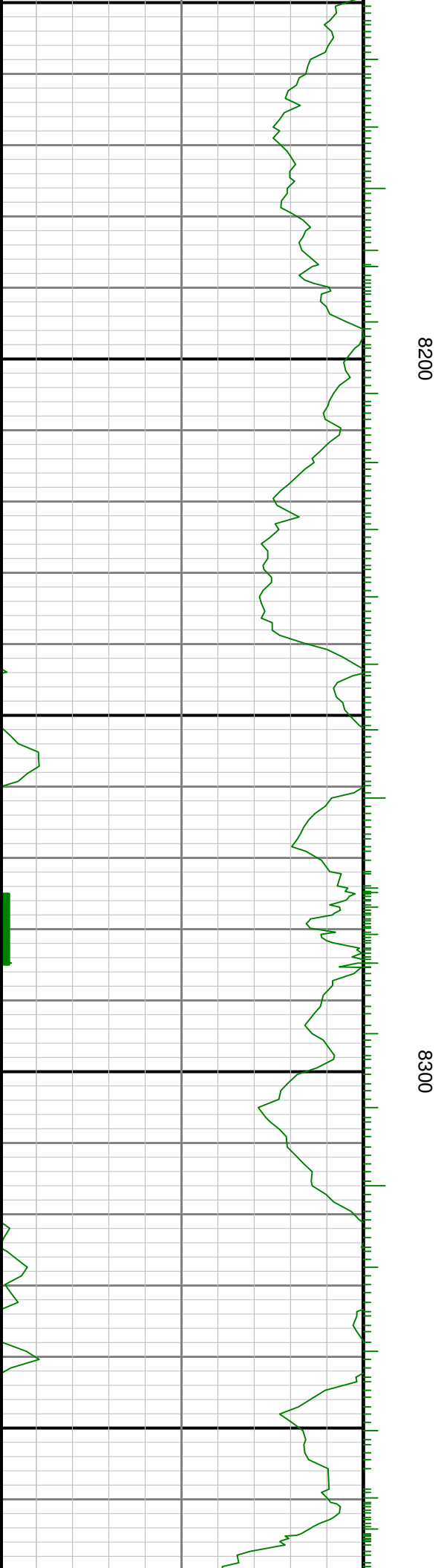
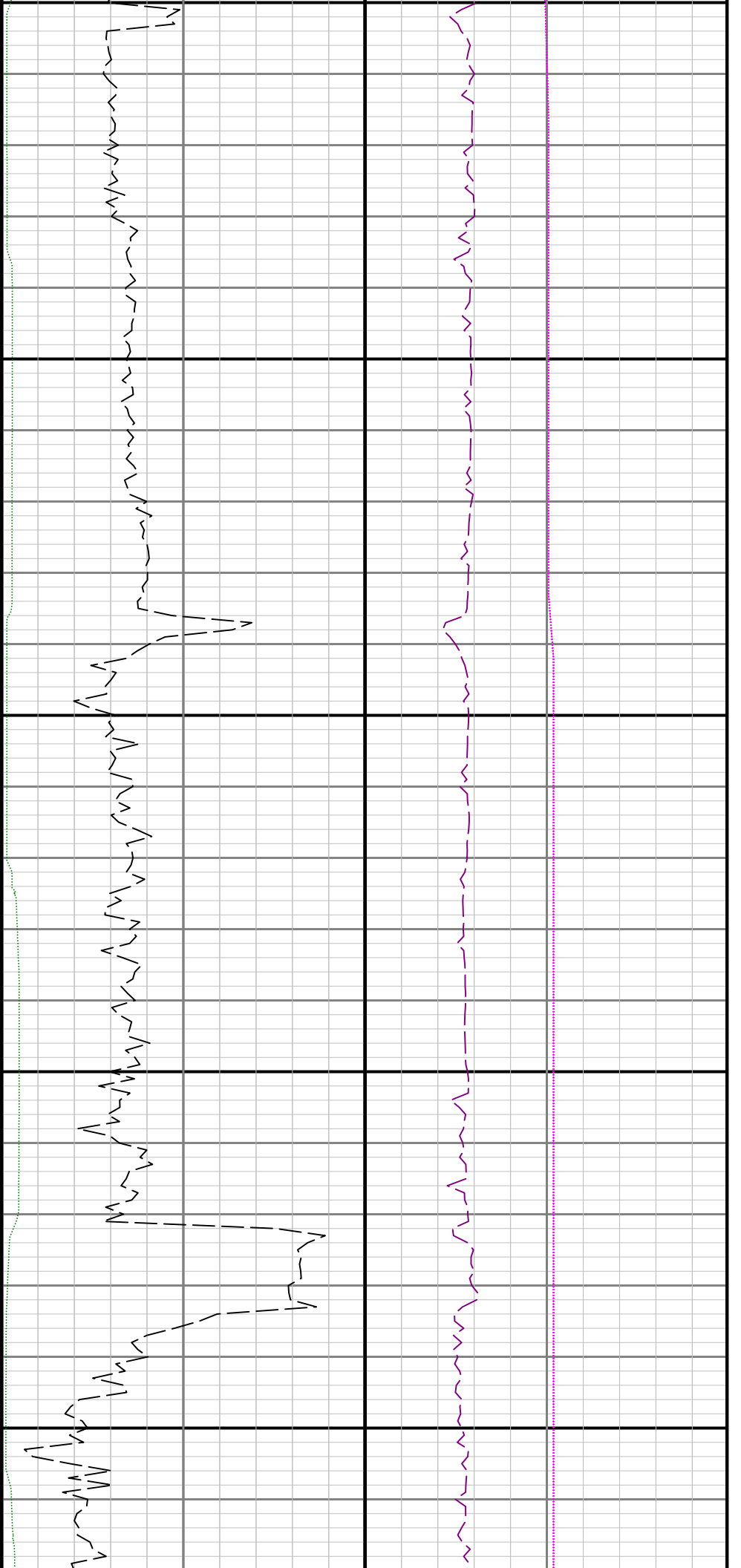


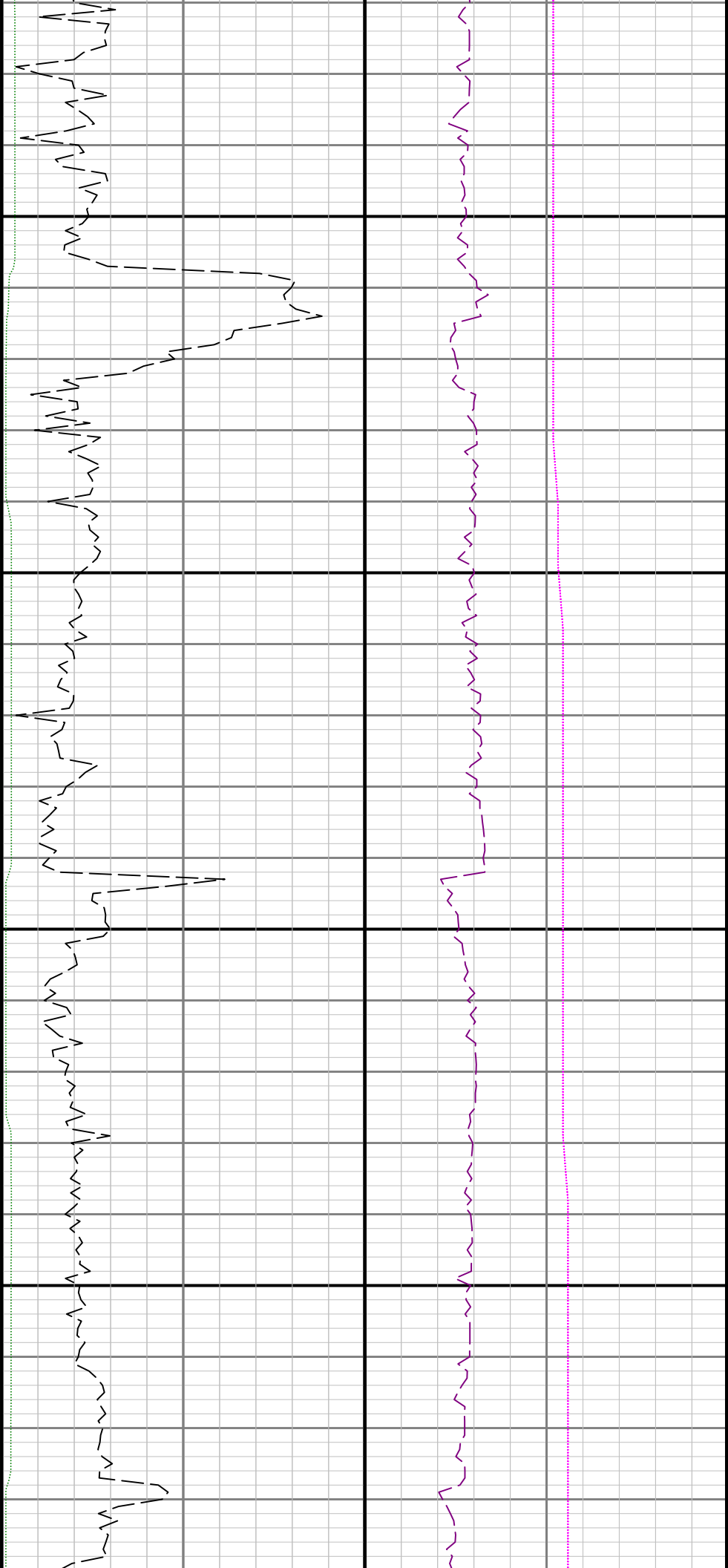


8000

8100

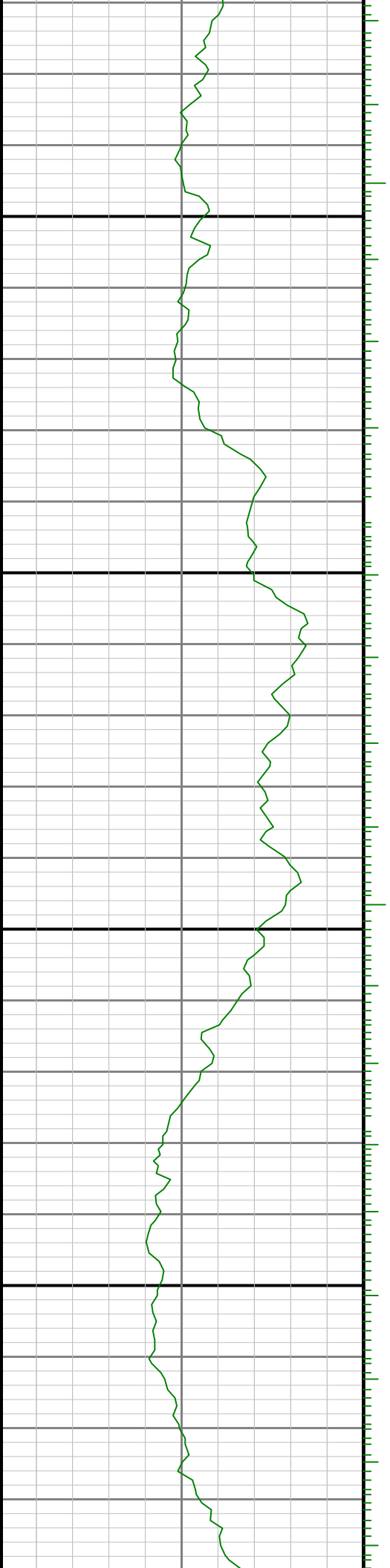


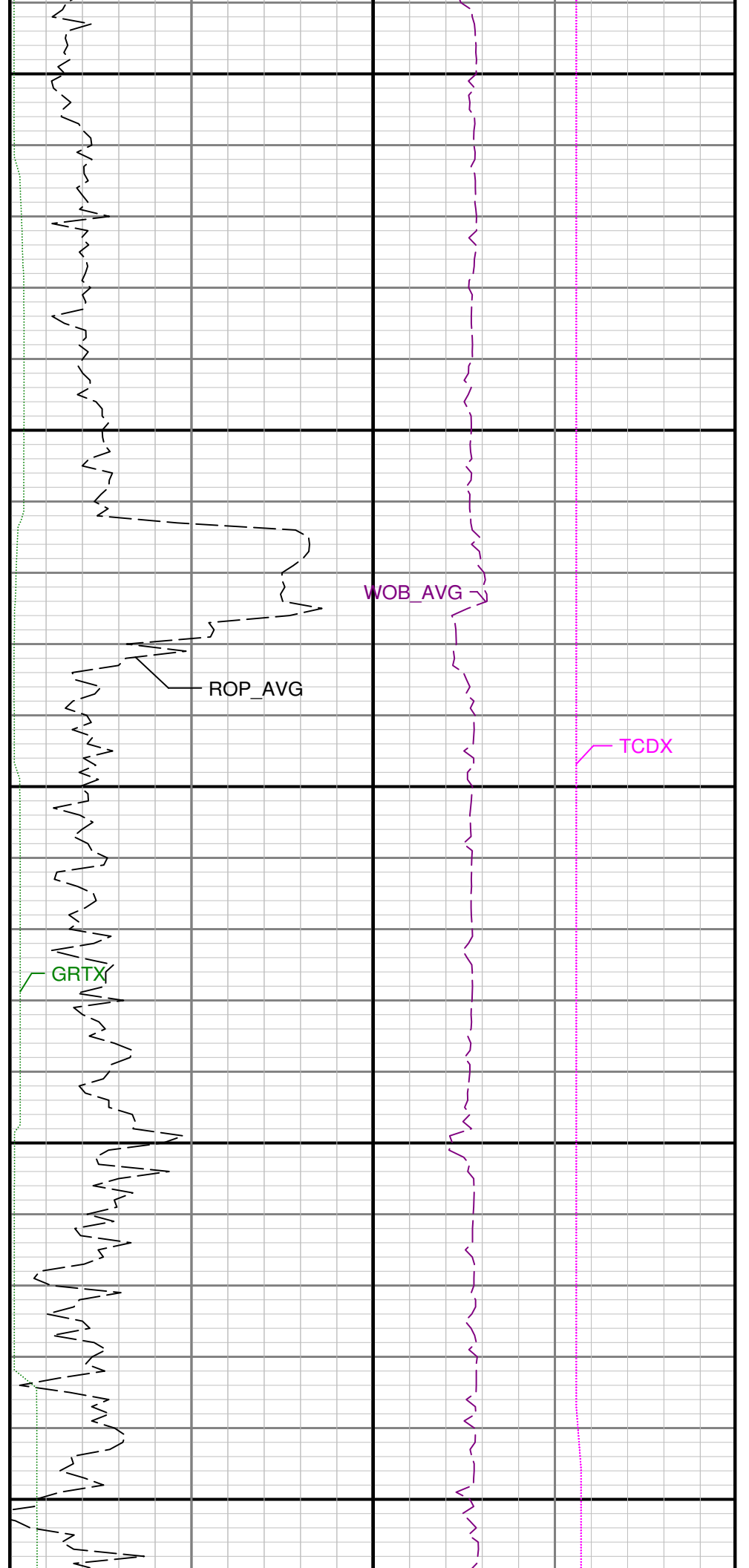
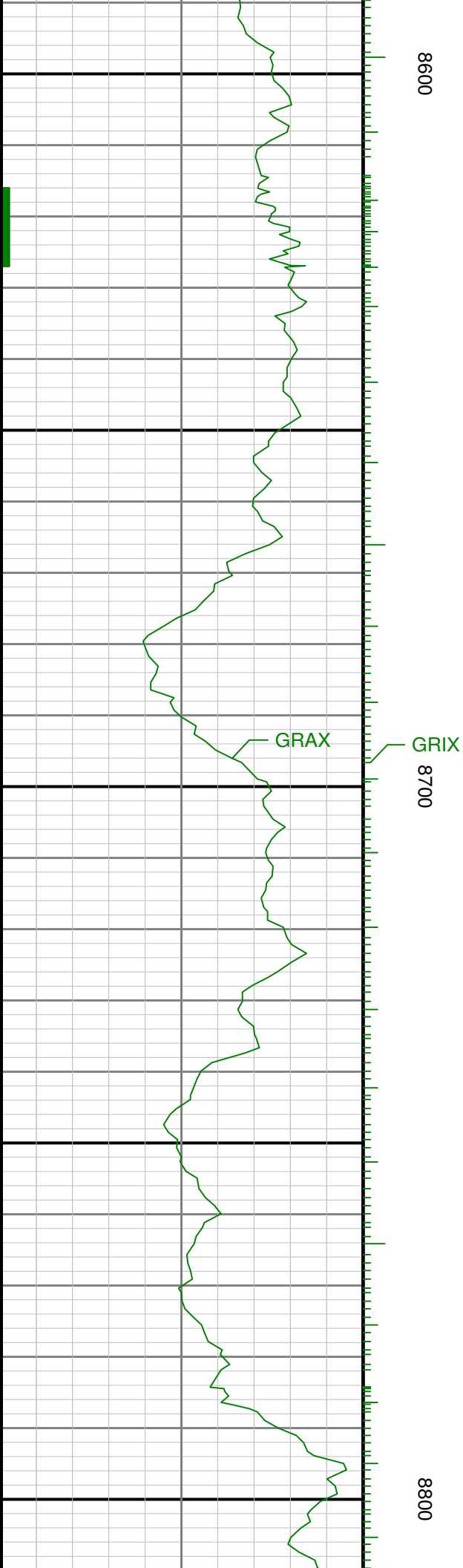


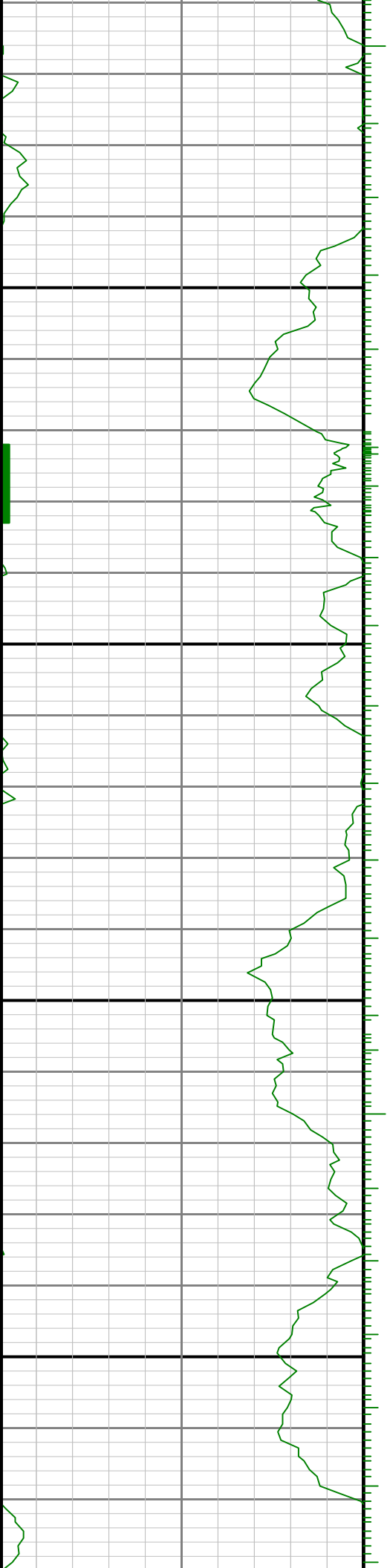


8400

8500

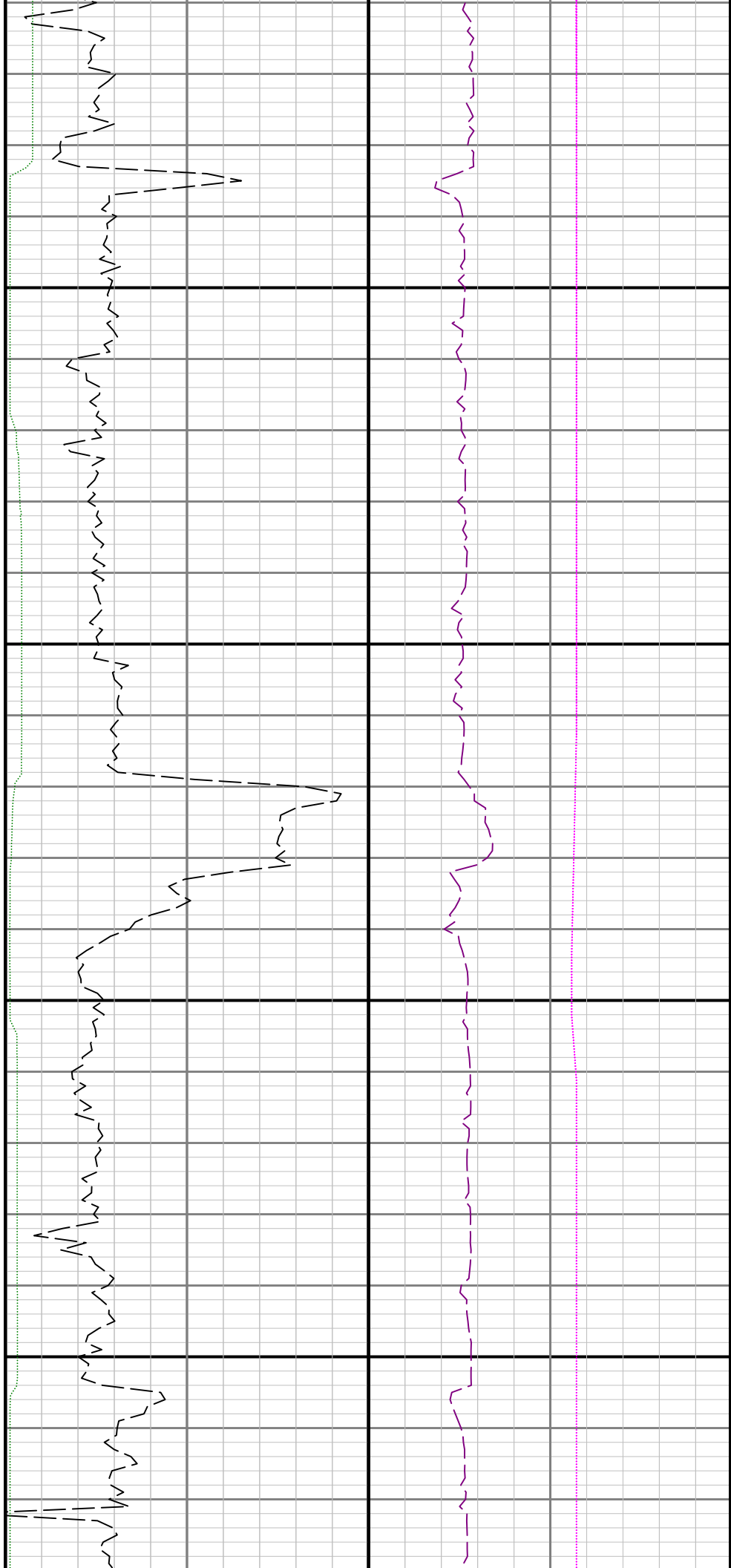


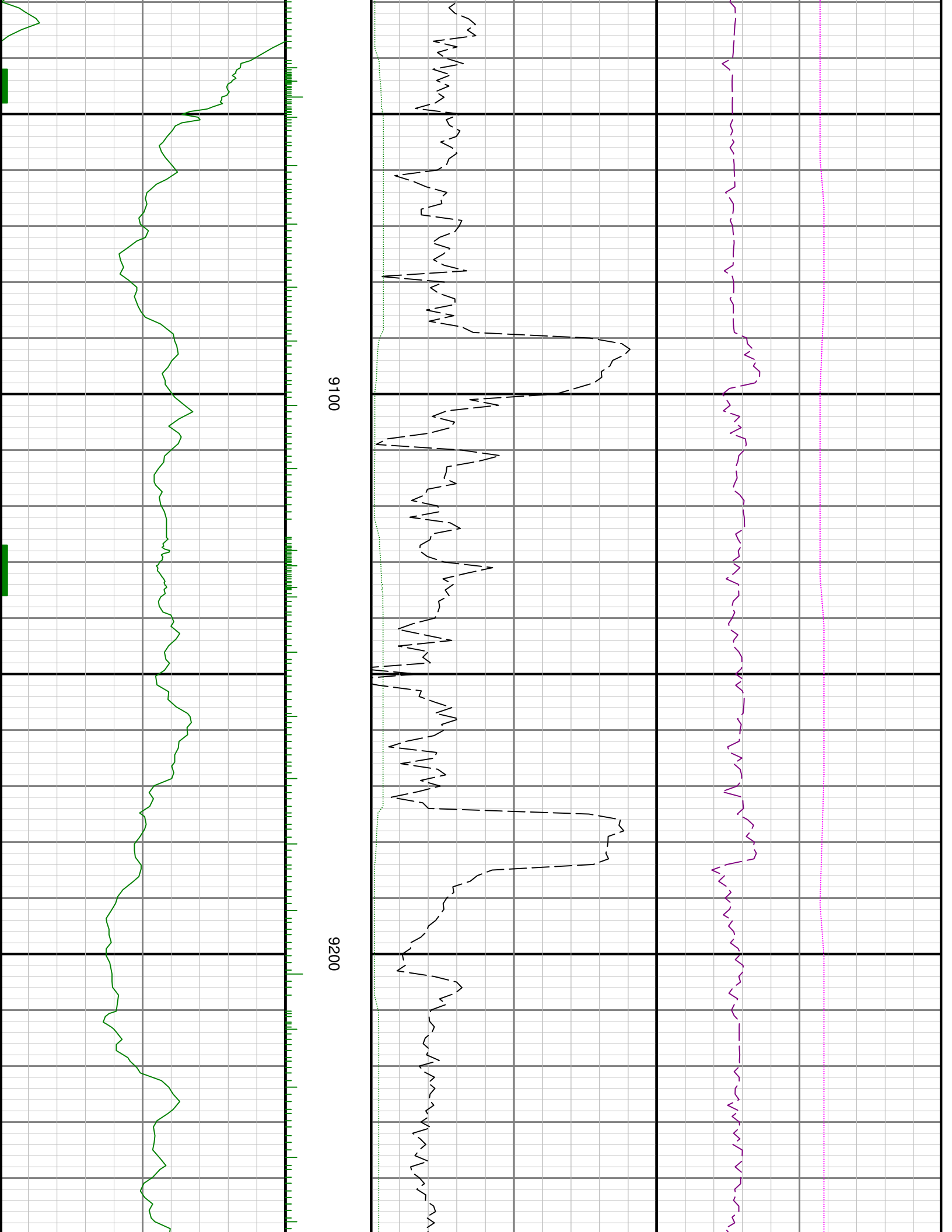


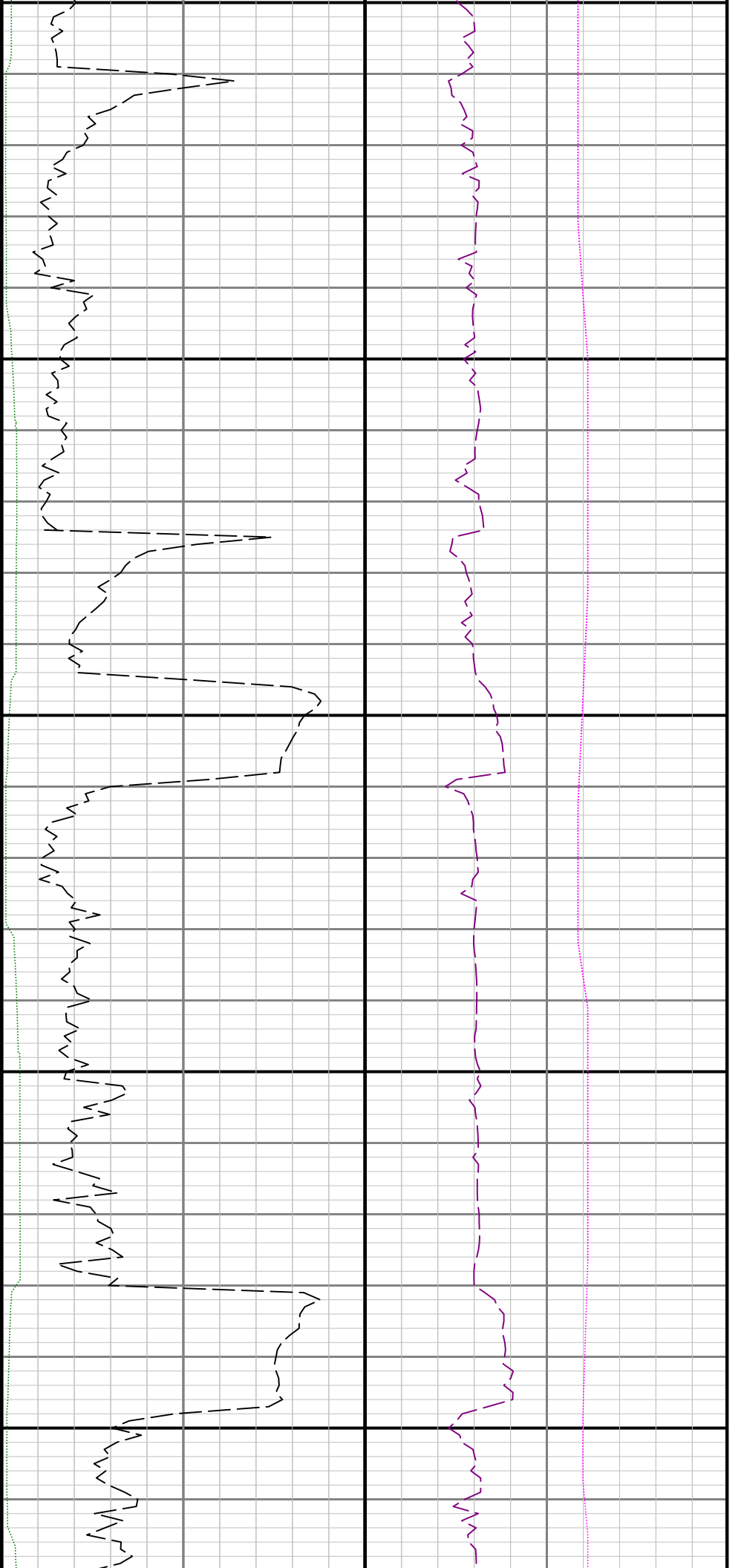


0006

0068

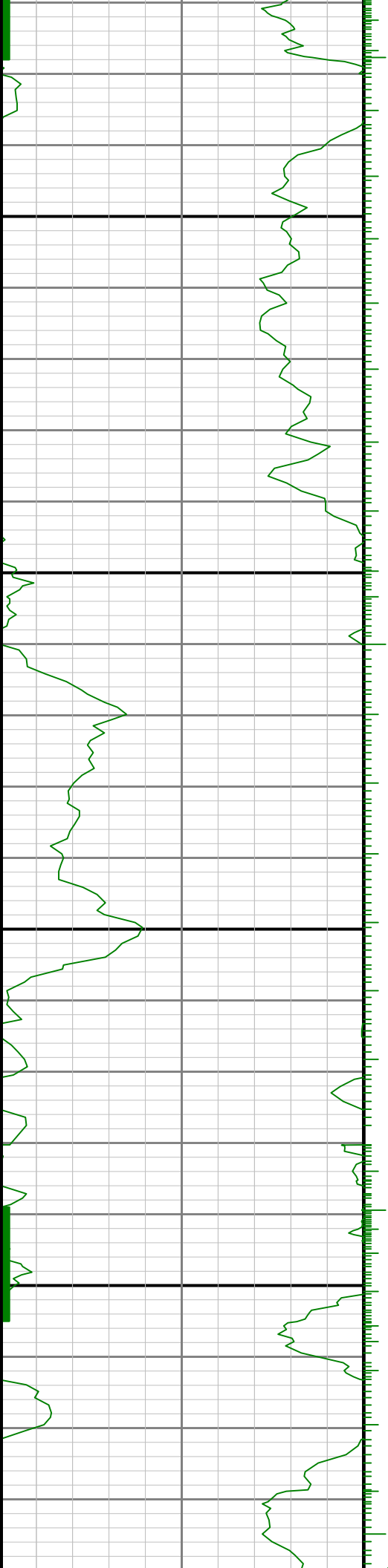






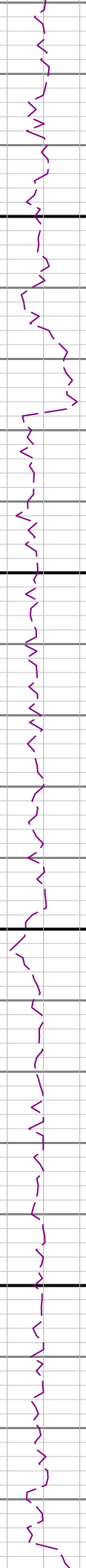
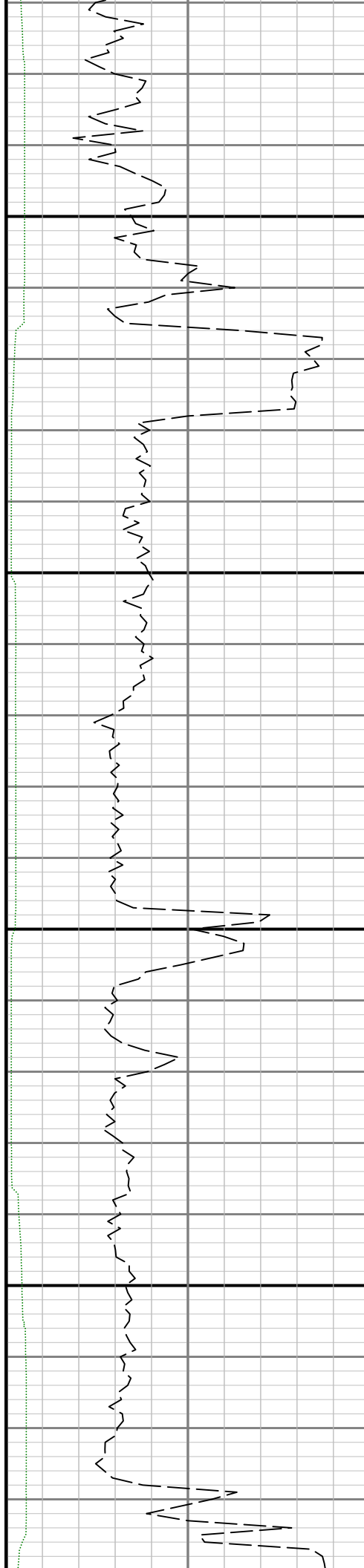
9300

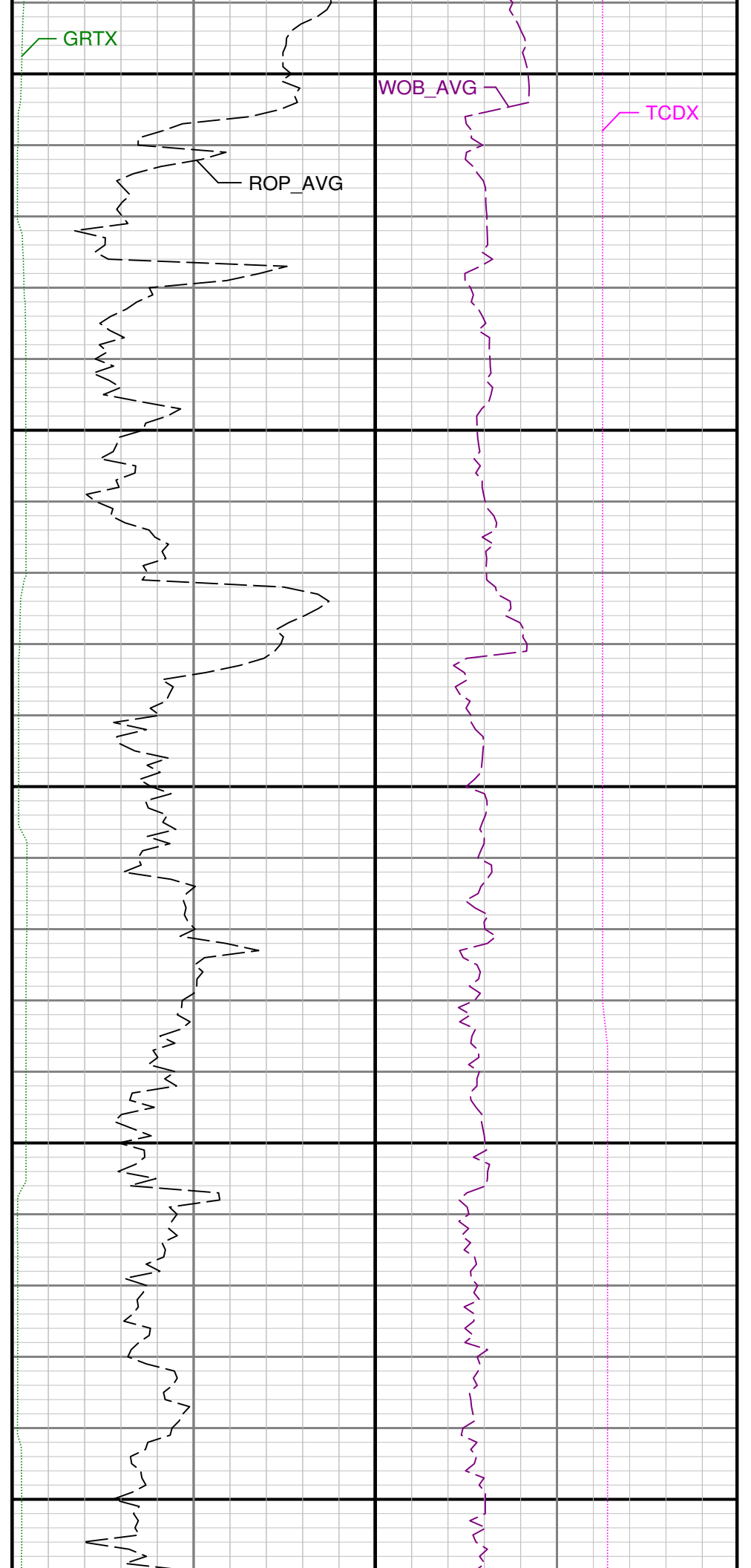
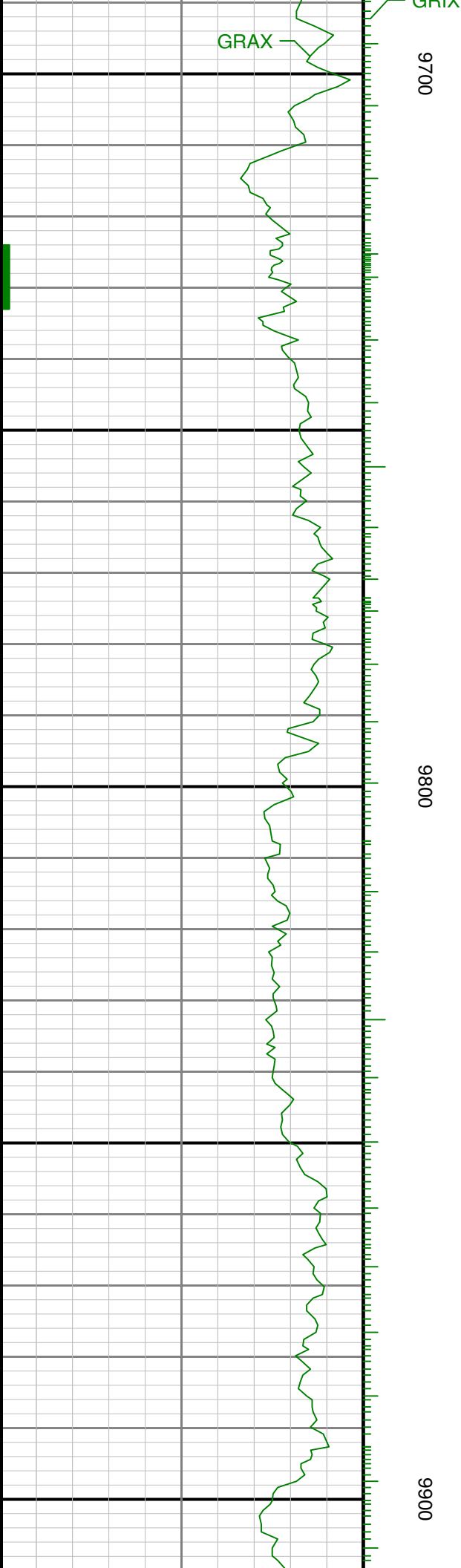
9400

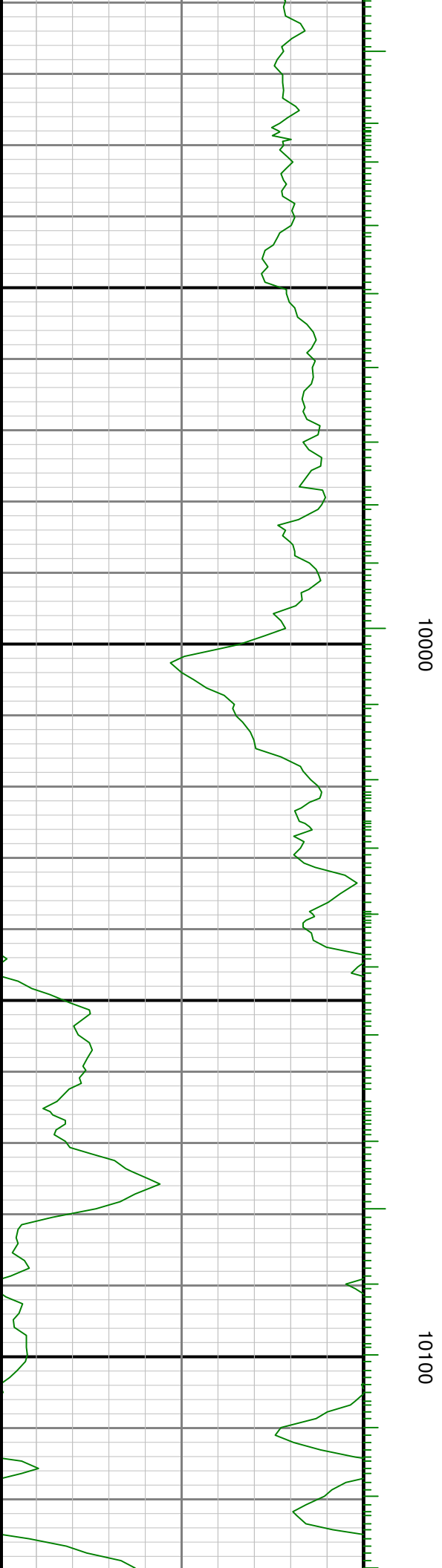
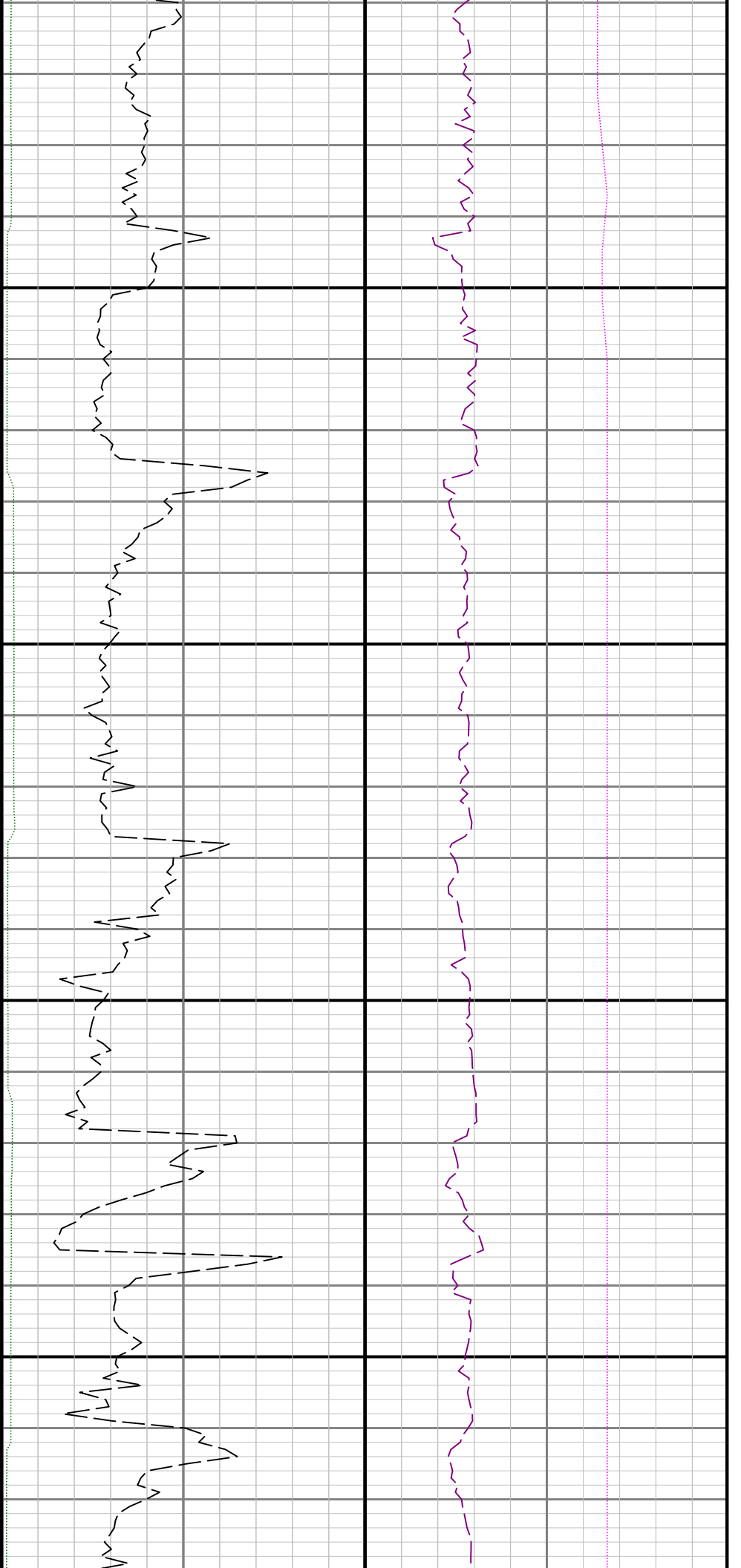


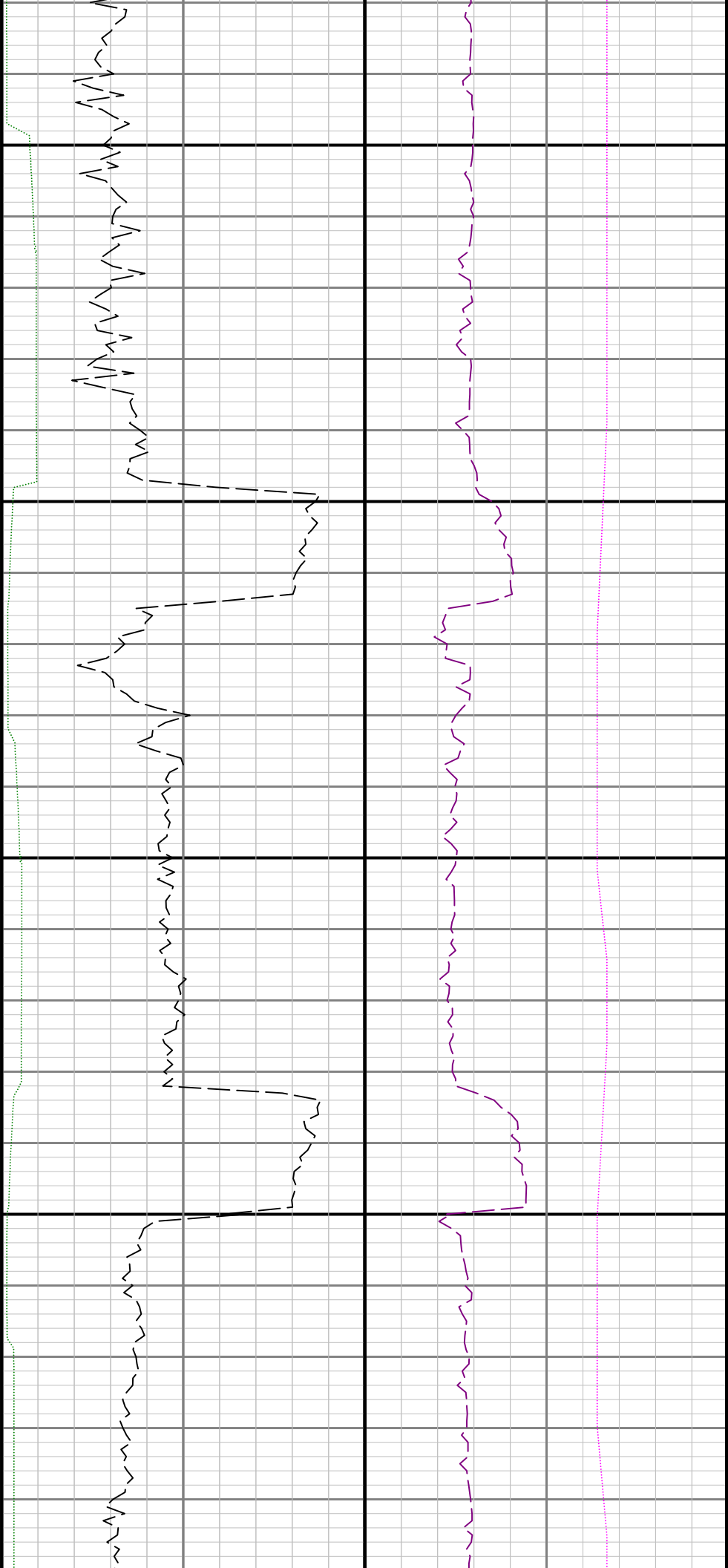
9500

9600



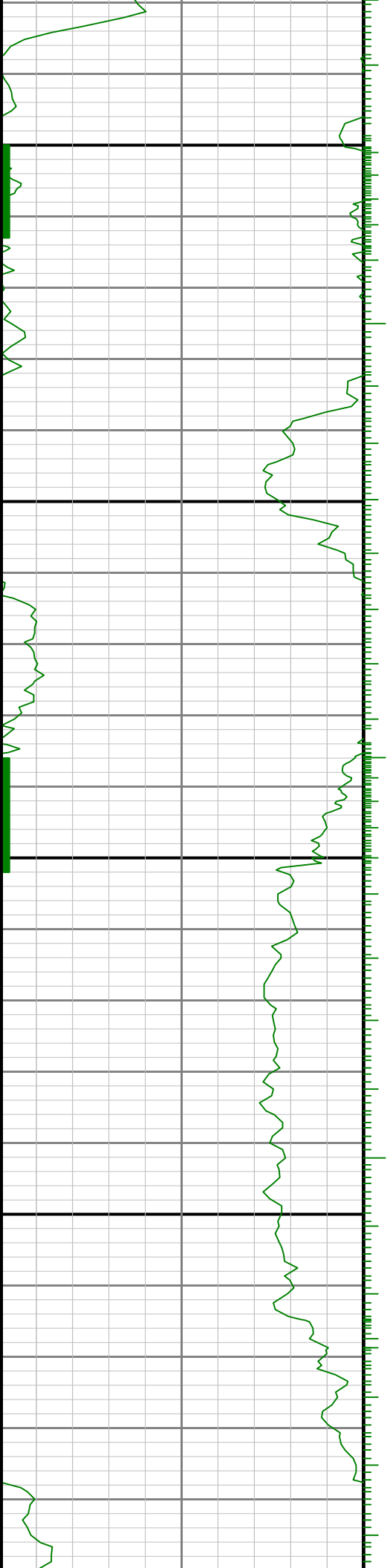


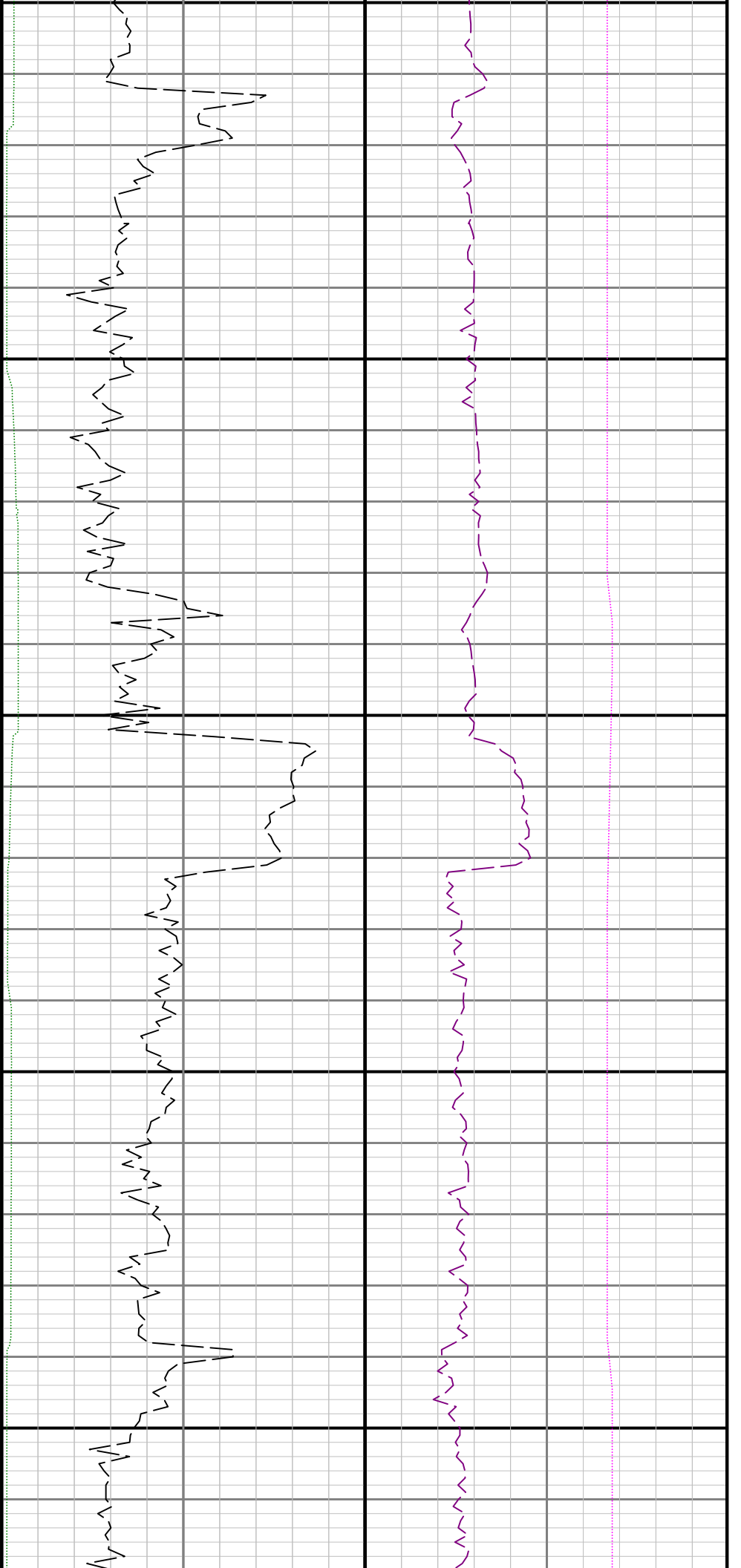




10200

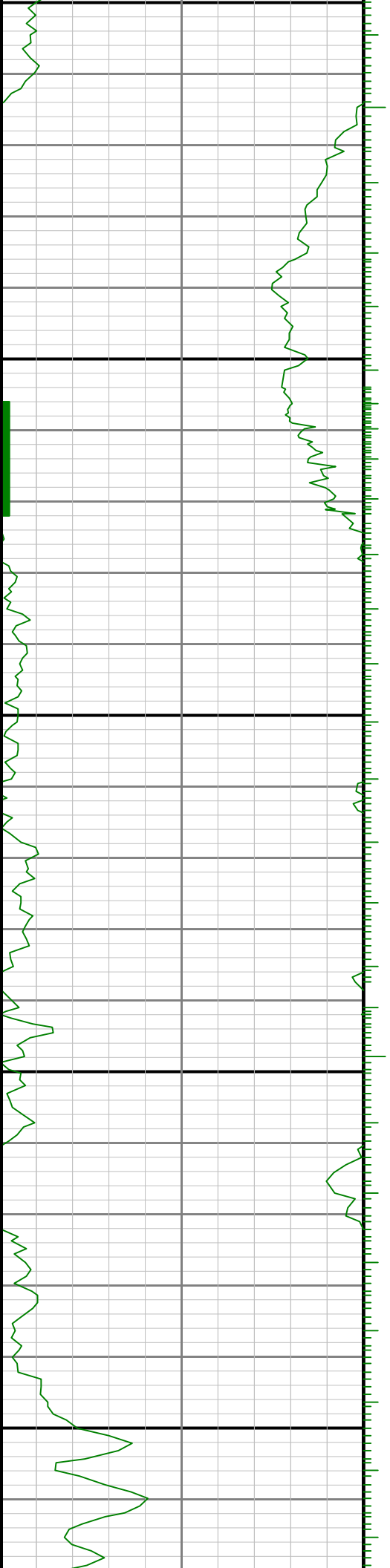
10300

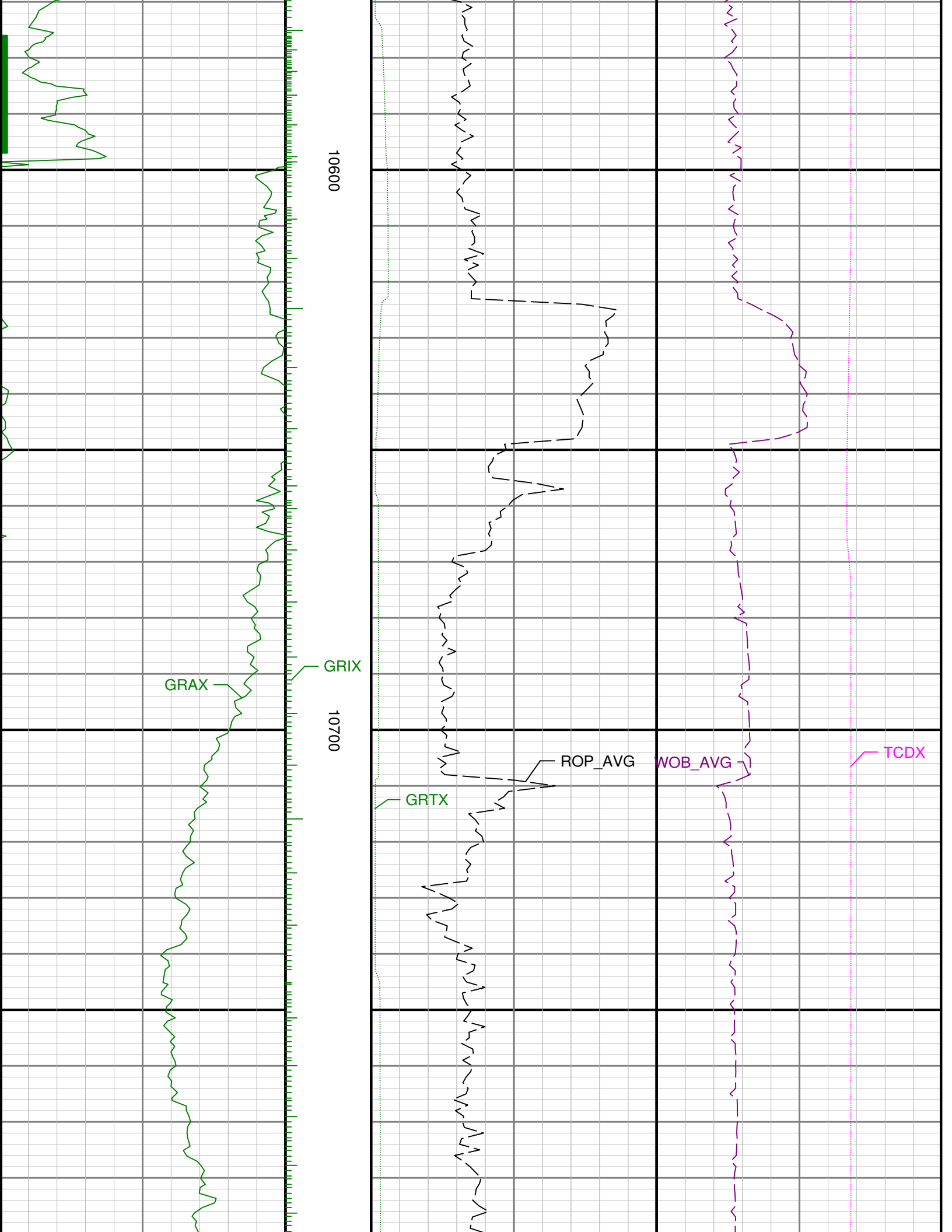


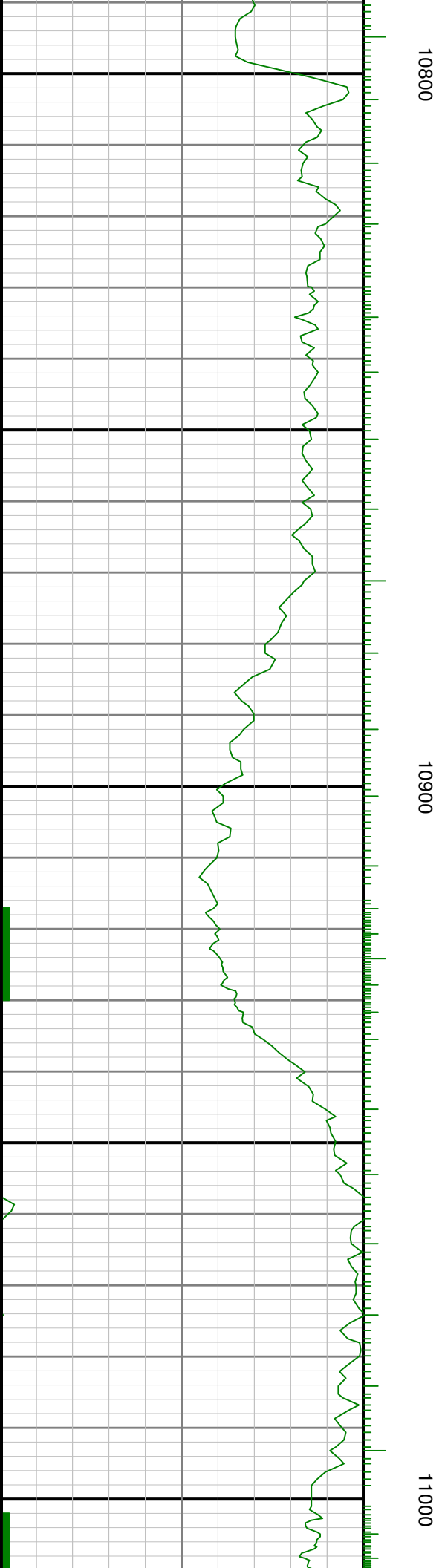
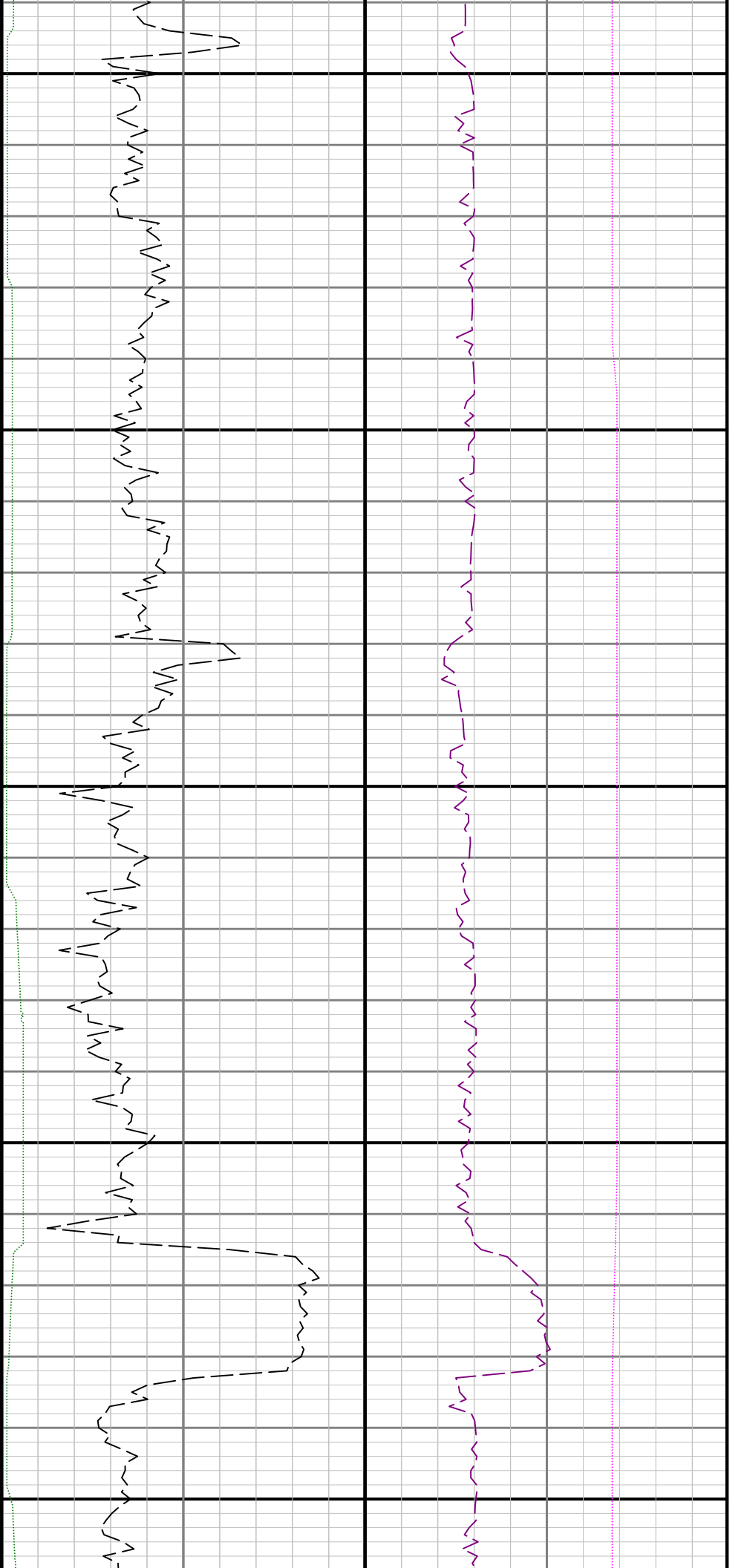


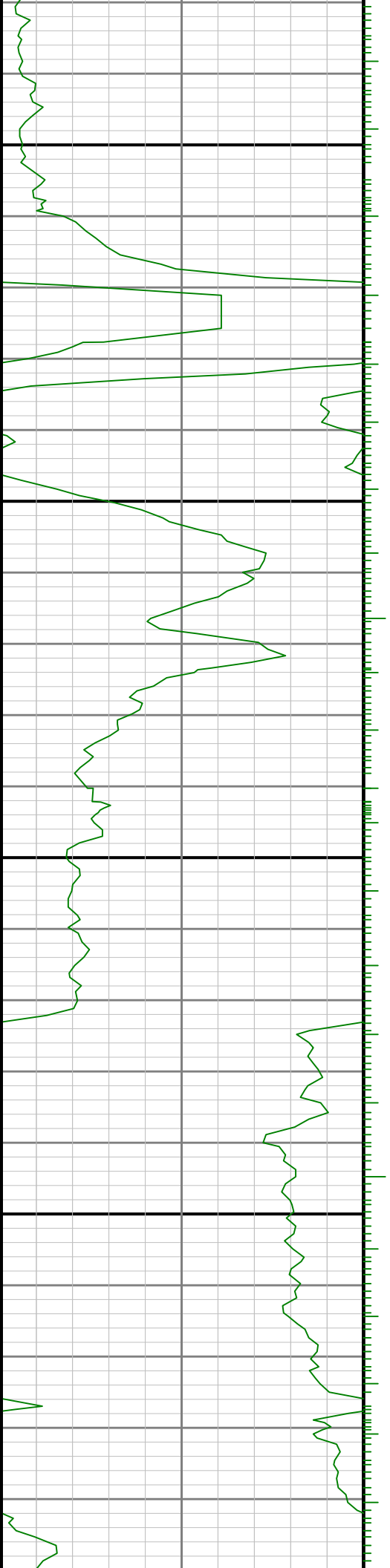
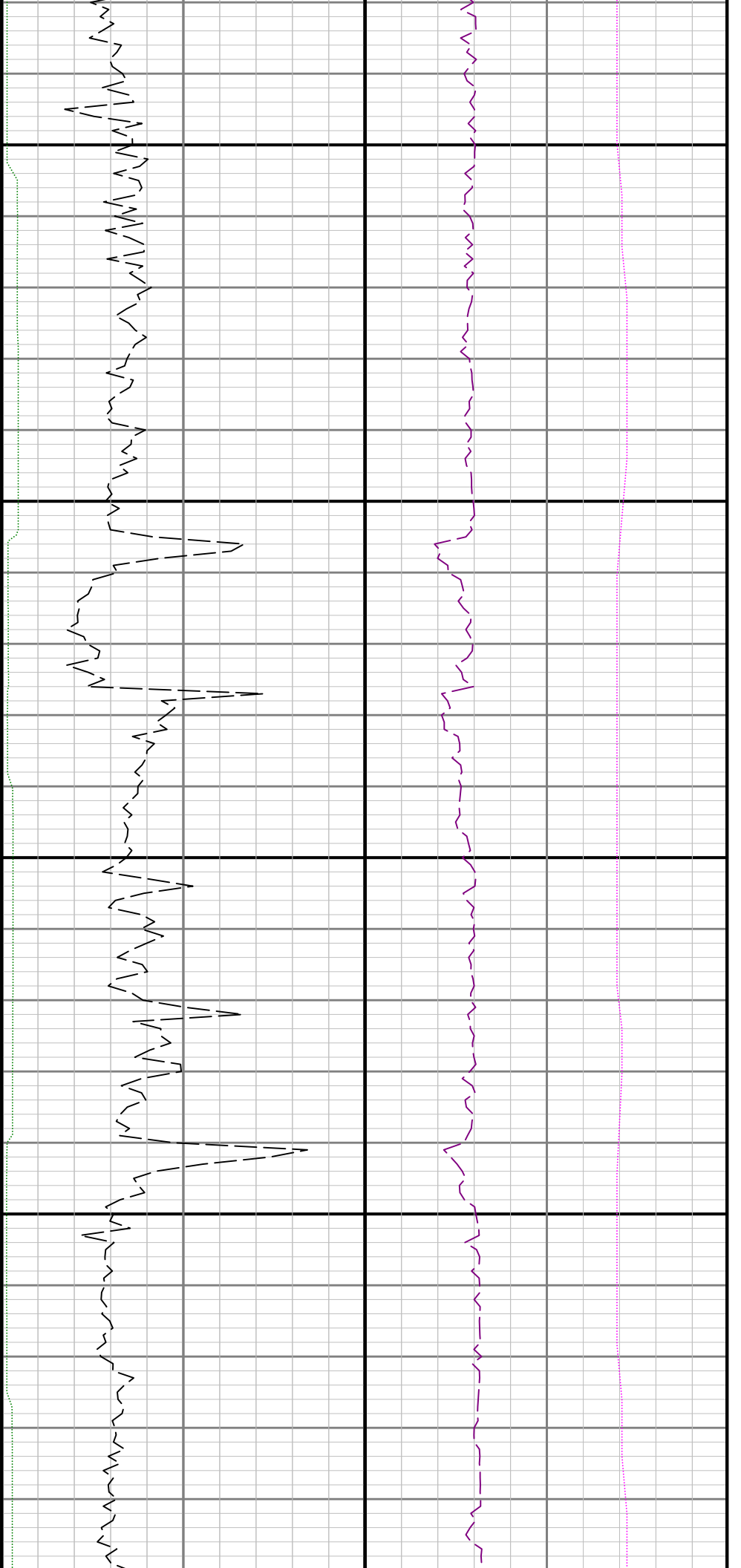
10400

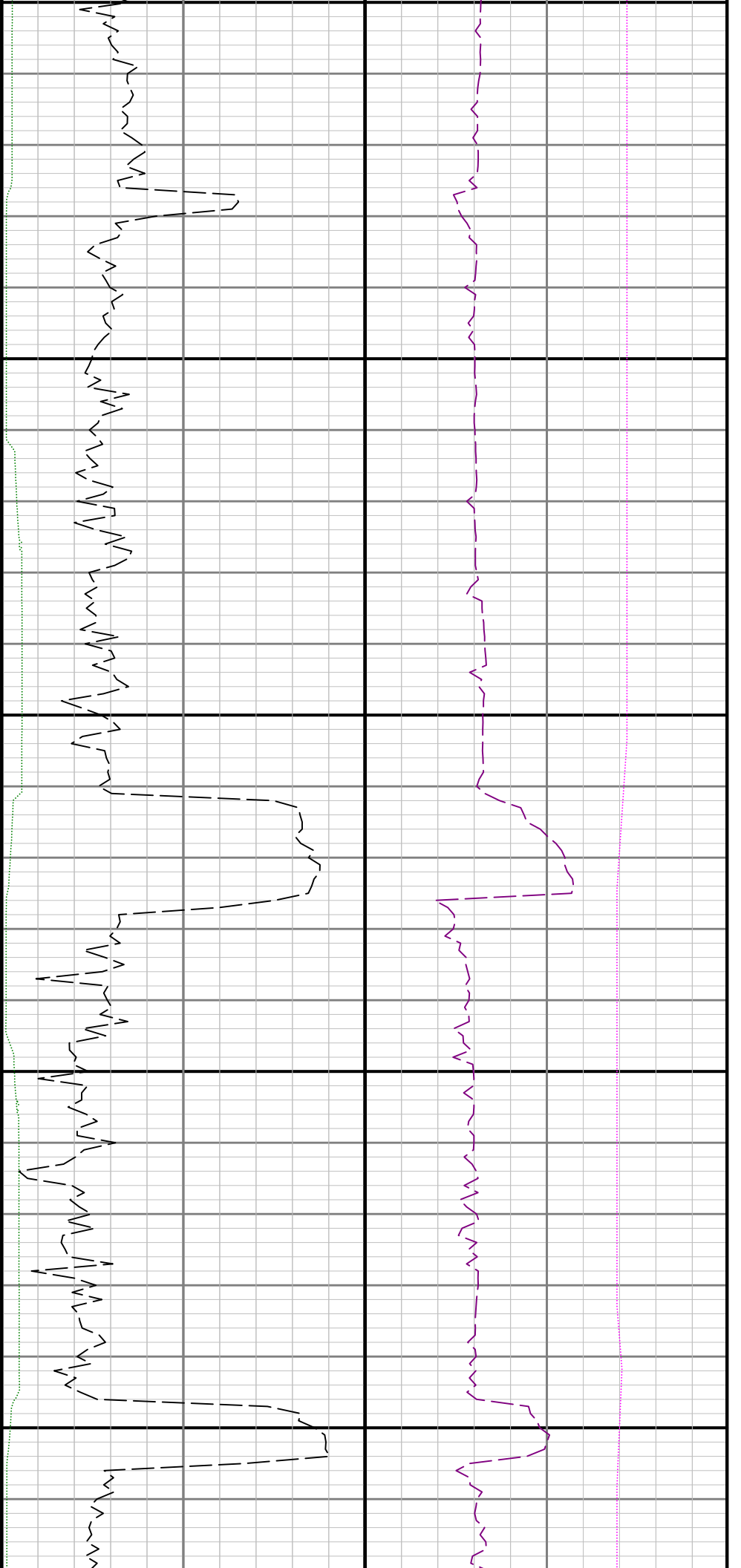
10500











11500

11600

