

T7N, R91W, 6th. P.M.

AXIA ENERGY

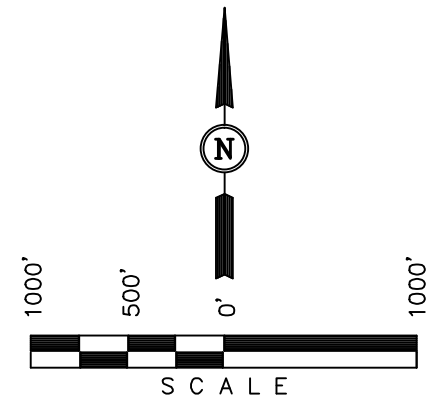
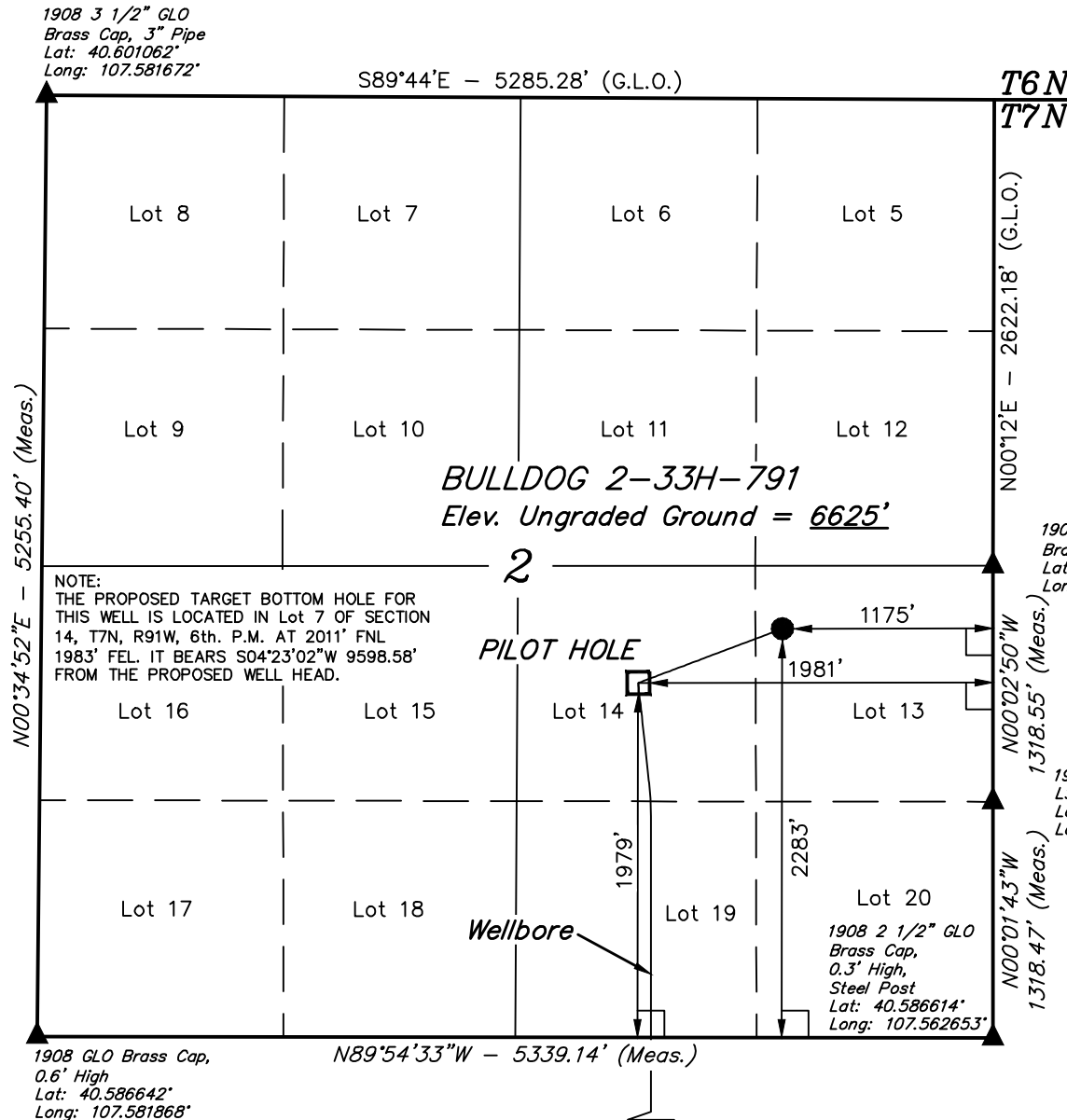
Well location, BULLDOG #2-33H-791 (Surface Location), located as shown in Lot 13 of Section 2, T7N, R91W, 6th. P.M., Moffat County, Colorado.

### BASIS OF ELEVATION

SPOT ELEVATION LOCATED AT THE SOUTHWEST CORNER OF SECTION 15, T7N, R91W, 6th P.M. TAKEN FROM THE CRAIG QUADRANGLE, COLORADO, MOFFAT COUNTY, 7.5 MINUTE QUAD (TOPOGRAPHIC MAP) PUBLISHED BY THE UNITED STATES DEPARTMENT OF THE INTERIOR, GEOLOGICAL SURVEY. SAID ELEVATION IS MARKED AS BEING 6672 FEET.

### BASIS OF BEARINGS

BASIS OF BEARINGS IS A G.P.S. OBSERVATION.



### CERTIFICATE

THIS IS TO CERTIFY THAT THE ABOVE PLAT WAS PREPARED FROM FIELD NOTES OF ACTUAL SURVEYS MADE BY ME OR UNDER MY SUPERVISION AND THAT THE SAME ARE TRUE AND CORRECT TO THE BEST OF MY KNOWLEDGE AND BELIEF.

REGISTERED LAND SURVEYOR  
REGISTRATION NO. 17492  
STATE OF COLORADO

REVISED: 08-01-13 M.D.

REVISED: 07-26-13 T.B.

UINTAH ENGINEERING & LAND SURVEYING

85 SOUTH 200 EAST - VERNAL, UTAH 84078

(435) 789-1017

Target Bottom Hole

NAD 83 (PILOT HOLE)	NAD 83 (SURFACE LOCATION)
LATITUDE = 40°35'31.40" (40.592056)	LATITUDE = 40°35'34.39" (40.592886)
LONGITUDE = 107°34'11.22" (107.569783)	LONGITUDE = 107°34'00.78" (107.566884)
NAD 27 (PILOT HOLE)	NAD 27 (SURFACE LOCATION)
LATITUDE = 40°35'31.51" (40.592086)	LATITUDE = 40°35'34.50" (40.592916)
LONGITUDE = 107°34'08.98" (107.569161)	LONGITUDE = 107°33'58.55" (107.566263)
STATE PLANE NAD 83	STATE PLANE NAD 83
N: 1465235.55 E: 2425229.45	N: 1465519.30 E: 2426041.12
STATE PLANE NAD 27	STATE PLANE NAD 27
N: 465234.32 E: 1425387.07	N: 465518.07 E: 1426198.74

### LEGEND:

└─┘ = 90° SYMBOL

● = PROPOSED WELL HEAD.

▲ = SECTION CORNERS LOCATED.

SCALE 1" = 1000'	DATE SURVEYED: 1-17-13	DATE DRAWN: 01-18-13
PARTY G.M. M.A. J.G.G.	REFERENCES G.L.O. PLAT	
WEATHER COLD	FILE AXIA ENERGY	