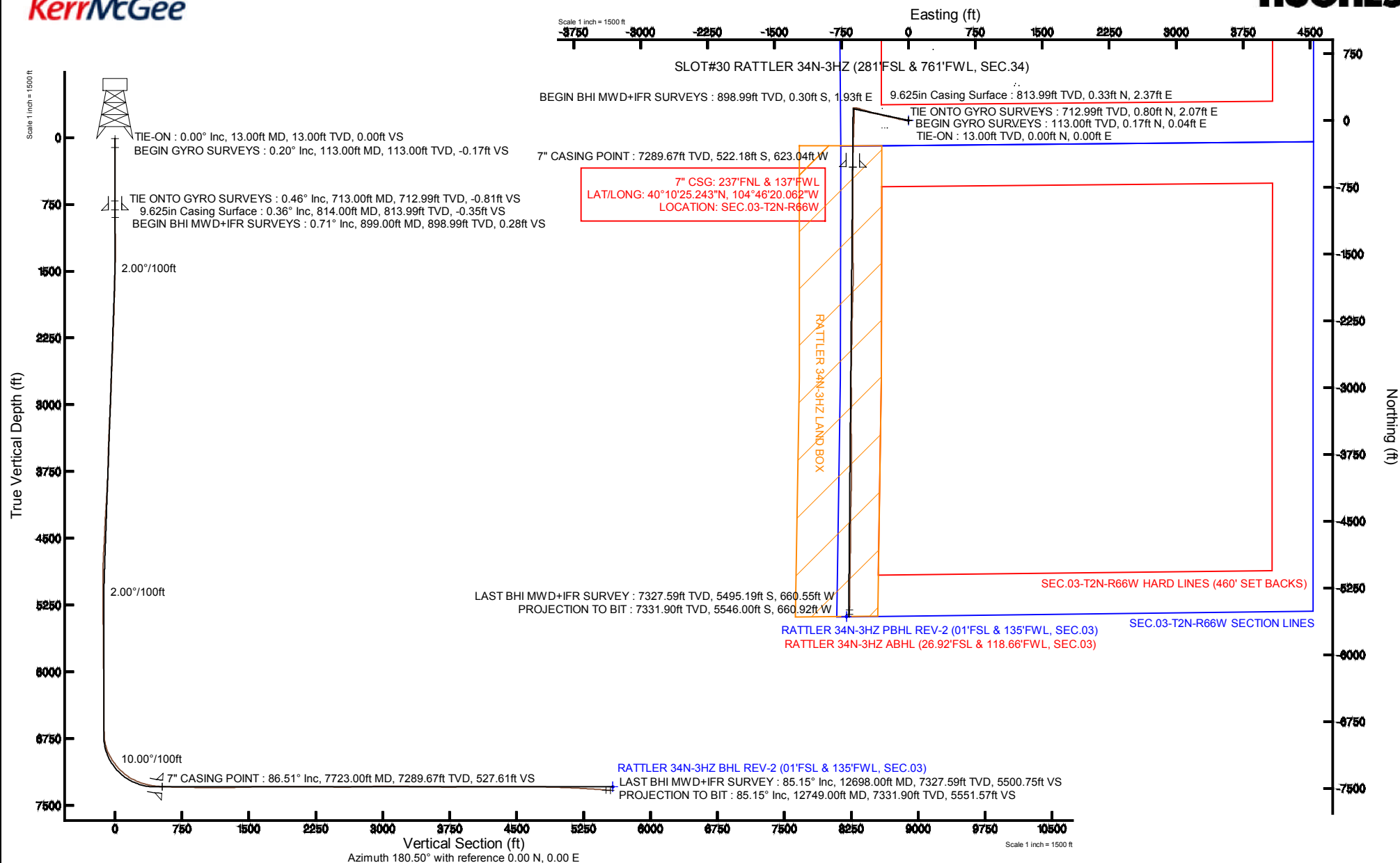


Location:	COLORADO	Slot:	SLOT#30 RATTLER 34N-3HZ (281'FSL & 761'FWL, SEC.34)
Field:	WELD COUNTY (KERR MCGEE)	Well:	RATTLER 34N-3HZ
Facility:	SEC.34-T3N-R66W	Wellbore:	RATTLER 34N-3HZ PWB

True vertical depths are referenced to ENSIGN 145 (13KB) (RKB)	Grid System: NAD83 / Lambert Colorado SP, Northern Zone (501), US feet
Measured depths are referenced to ENSIGN 145 (13KB) (RKB)	North Reference: True north
ENSIGN 145 (13KB) (RKB) to Mean Sea Level: 4983 feet	Scale: True distance
Mean Sea Level to Mud line (At Slot: SLOTH30 RATTLER 34N-3HZ (281'FSL & 761'FWL, SEC.34): 0 feet	Depths are in feet
Coordinates are in feet referenced to Slot	Created by: robaleo1 on 11/Sep/2013





# Actual Wellpath Report

RATTLER 34N-3HZ AWP

Page 1 of 7



## REFERENCE WELLPATH IDENTIFICATION

Operator	KERR-MCGEE OIL & GAS ONSHORE LP	Slot	SLOT#30 RATTLER 34N-3HZ (281'FSL & 761'FWL, SEC.34)
Area	COLORADO	Well	RATTLER 34N-3HZ
Field	WELD COUNTY (KERR MCGEE)	Wellbore	RATTLER 34N-3HZ AWB
Facility	SEC.34-T3N-R66W		

## REPORT SETUP INFORMATION

Projection System	NAD83 / Lambert Colorado SP, Northern Zone (501), US feet	Software System	WellArchitect® 4.0.0
North Reference	True	User	Robiale01
Scale	0.999958	Report Generated	11/Sep/2013 at 14:17
Convergence at slot	n/a	Database/Source file	WA_ANADARKO/RATTLER_34N-3HZ_AWB.xml

## WELLPATH LOCATION

	Local coordinates		Grid coordinates		Geographic coordinates	
	North[ft]	East[ft]	Easting[US ft]	Northing[US ft]	Latitude	Longitude
Slot Location	-1653.20	108.98	3203981.89	1307475.79	40°10'30.403"N	104°46'12.036"W
Facility Reference Pt			3203859.31	1309127.97	40°10'46.740"N	104°46'13.440"W
Field Reference Pt			3197771.84	1268891.29	40°04'09.600"N	104°47'36.000"W

## WELLPATH DATUM

Calculation method	Minimum curvature	ENSIGN 145 (13'KB) (RKB) to Facility Vertical Datum	4983.00ft
Horizontal Reference Pt	Slot	ENSIGN 145 (13'KB) (RKB) to Mean Sea Level	4983.00ft
Vertical Reference Pt	ENSIGN 145 (13'KB) (RKB)	ENSIGN 145 (13'KB) (RKB) to Mud Line at Slot (SLOT#30 RATTLER 34N-3HZ (281'FSL & 761'FWL, SEC.34))	4983.00ft
MD Reference Pt	ENSIGN 145 (13'KB) (RKB)	Section Origin	N 0.00, E 0.00 ft
Field Vertical Reference	Mean Sea Level	Section Azimuth	180.50°



# Actual Wellpath Report

RATTLER 34N-3HZ AWP

Page 2 of 7



## REFERENCE WELLPATH IDENTIFICATION

Operator	KERR-MCGEE OIL & GAS ONSHORE LP	Slot	SLOT#30 RATTLER 34N-3HZ (281'FSL & 761'FWL, SEC.34)
Area	COLORADO	Well	RATTLER 34N-3HZ
Field	WELD COUNTY (KERR MCGEE)	Wellbore	RATTLER 34N-3HZ AWP
Facility	SEC.34-T3N-R66W		

## WELLPATH DATA (136 stations) † = interpolated/extrapolated station

MD [ft]	Inclination [°]	Azimuth [°]	TVD [ft]	Vert Sect [ft]	North [ft]	East [ft]	Latitude	Longitude	DLS [°/100ft]	Comments
0.00†	0.000	11.670	0.00	0.00	0.00	0.00	40°10'30.403"N	104°46'12.036"W	0.00	
13.00	0.000	11.670	13.00	0.00	0.00	0.00	40°10'30.403"N	104°46'12.036"W	0.00	TIE-ON
113.00	0.200	11.670	113.00	-0.17	0.17	0.04	40°10'30.405"N	104°46'12.036"W	0.20	BEGIN GYRO SURVEYS
213.00	0.190	358.740	213.00	-0.51	0.51	0.07	40°10'30.408"N	104°46'12.035"W	0.05	
313.00	0.130	35.150	313.00	-0.77	0.77	0.13	40°10'30.411"N	104°46'12.034"W	0.12	
413.00	0.110	64.320	413.00	-0.90	0.90	0.28	40°10'30.412"N	104°46'12.032"W	0.06	
513.00	0.350	98.870	513.00	-0.90	0.90	0.67	40°10'30.412"N	104°46'12.027"W	0.27	
613.00	0.420	82.000	613.00	-0.91	0.90	1.33	40°10'30.412"N	104°46'12.019"W	0.13	
713.00	0.460	112.500	712.99	-0.81	0.80	2.07	40°10'30.411"N	104°46'12.009"W	0.23	TIE ONTO GYRO SURVEYS
899.00	0.710	225.580	898.99	0.28	-0.30	1.93	40°10'30.400"N	104°46'12.011"W	0.53	BEGIN BHI MWD+IFR SURVEYS
992.00	0.790	220.340	991.98	1.18	-1.19	1.11	40°10'30.391"N	104°46'12.022"W	0.11	
1086.00	0.980	211.050	1085.97	2.37	-2.37	0.27	40°10'30.380"N	104°46'12.032"W	0.25	
1180.00	1.850	252.260	1179.94	3.54	-3.52	-1.59	40°10'30.368"N	104°46'12.056"W	1.37	
1273.00	1.770	277.500	1272.90	3.83	-3.79	-4.44	40°10'30.366"N	104°46'12.093"W	0.85	
1367.00	4.190	281.830	1366.76	2.98	-2.90	-9.24	40°10'30.374"N	104°46'12.155"W	2.58	
1461.00	5.730	279.800	1460.41	1.55	-1.40	-17.23	40°10'30.389"N	104°46'12.258"W	1.65	
1554.00	7.130	286.910	1552.82	-0.84	1.07	-27.32	40°10'30.414"N	104°46'12.388"W	1.73	
1648.00	9.220	282.660	1645.86	-4.07	4.42	-40.26	40°10'30.447"N	104°46'12.555"W	2.31	
1742.00	8.740	277.170	1738.71	-6.49	6.96	-54.69	40°10'30.472"N	104°46'12.741"W	1.04	
1835.00	9.950	276.310	1830.47	-8.12	8.73	-69.69	40°10'30.489"N	104°46'12.934"W	1.31	
1929.00	9.690	279.330	1923.10	-10.16	10.90	-85.56	40°10'30.511"N	104°46'13.138"W	0.61	
2019.00	10.420	285.630	2011.72	-13.44	14.32	-100.88	40°10'30.545"N	104°46'13.336"W	1.47	
2109.00	10.200	283.000	2100.27	-17.29	18.31	-116.48	40°10'30.584"N	104°46'13.537"W	0.58	
2199.00	9.890	284.100	2188.89	-20.83	21.99	-131.74	40°10'30.620"N	104°46'13.733"W	0.41	
2289.00	9.120	283.150	2277.65	-24.21	25.49	-146.18	40°10'30.655"N	104°46'13.919"W	0.87	
2379.00	8.330	282.050	2366.61	-27.08	28.47	-159.50	40°10'30.684"N	104°46'14.091"W	0.90	
2469.00	9.820	287.980	2455.48	-30.69	32.21	-173.18	40°10'30.721"N	104°46'14.267"W	1.95	
2559.00	10.550	282.550	2544.06	-34.72	36.36	-188.52	40°10'30.762"N	104°46'14.465"W	1.34	
2649.00	9.800	280.060	2632.65	-37.71	39.49	-204.11	40°10'30.793"N	104°46'14.665"W	0.97	
2739.00	10.130	282.260	2721.29	-40.59	42.51	-219.38	40°10'30.823"N	104°46'14.862"W	0.56	
2829.00	11.720	282.690	2809.66	-44.14	46.20	-236.04	40°10'30.860"N	104°46'15.077"W	1.77	
2919.00	11.450	280.980	2897.82	-47.69	49.91	-253.72	40°10'30.896"N	104°46'15.305"W	0.49	
3009.00	11.200	279.710	2986.07	-50.71	53.09	-271.11	40°10'30.928"N	104°46'15.529"W	0.39	
3099.00	10.490	288.140	3074.47	-54.60	57.11	-287.51	40°10'30.967"N	104°46'15.740"W	1.93	
3189.00	10.120	287.620	3163.02	-59.41	62.06	-302.83	40°10'31.016"N	104°46'15.937"W	0.42	
3279.00	9.740	286.830	3251.67	-63.87	66.65	-317.66	40°10'31.062"N	104°46'16.128"W	0.45	
3369.00	8.890	286.290	3340.48	-67.91	70.81	-331.62	40°10'31.103"N	104°46'16.308"W	0.95	
3459.00	9.010	281.820	3429.39	-71.18	74.20	-345.19	40°10'31.136"N	104°46'16.483"W	0.78	
3549.00	9.450	277.920	3518.22	-73.52	76.66	-359.41	40°10'31.161"N	104°46'16.666"W	0.85	
3639.00	9.940	278.650	3606.94	-75.57	78.85	-374.40	40°10'31.182"N	104°46'16.859"W	0.56	
3729.00	9.610	280.310	3695.63	-77.95	81.36	-389.47	40°10'31.207"N	104°46'17.053"W	0.48	
3819.00	9.920	283.020	3784.33	-80.91	84.45	-404.42	40°10'31.238"N	104°46'17.246"W	0.62	
3909.00	10.630	287.970	3872.88	-85.09	88.76	-419.87	40°10'31.280"N	104°46'17.445"W	1.26	
3999.00	9.500	286.380	3961.50	-89.61	93.42	-434.89	40°10'31.326"N	104°46'17.639"W	1.29	
4089.00	10.150	288.800	4050.18	-94.13	98.07	-449.52	40°10'31.372"N	104°46'17.827"W	0.86	



# Actual Wellpath Report

RATTLER 34N-3HZ AWP

Page 3 of 7



## REFERENCE WELLPATH IDENTIFICATION

Operator	KERR-MCGEE OIL & GAS ONSHORE LP	Slot	SLOT#30 RATTLER 34N-3HZ (281'FSL & 761'FWL, SEC.34)
Area	COLORADO	Well	RATTLER 34N-3HZ
Field	WELD COUNTY (KERR MCGEE)	Wellbore	RATTLER 34N-3HZ AWP
Facility	SEC.34-T3N-R66W		

## WELLPATH DATA (136 stations) † = interpolated/extrapolated station

MD [ft]	Inclination [°]	Azimuth [°]	TVD [ft]	Vert Sect [ft]	North [ft]	East [ft]	Latitude	Longitude	DLS [°/100ft]	Comments
4179.00	11.960	289.550	4138.50	-99.67	103.74	-465.82	40°10'31.428"N	104°46'18.037"W	2.02	
4269.00	11.520	288.770	4226.62	-105.53	109.76	-483.12	40°10'31.488"N	104°46'18.260"W	0.52	
4359.00	10.160	284.450	4315.01	-110.26	114.63	-499.31	40°10'31.536"N	104°46'18.468"W	1.76	
4450.00	9.980	285.560	4404.61	-114.24	118.75	-514.68	40°10'31.576"N	104°46'18.666"W	0.29	
4540.00	9.280	288.760	4493.34	-118.54	123.17	-529.07	40°10'31.620"N	104°46'18.852"W	0.98	
4630.00	9.930	288.960	4582.08	-123.27	128.03	-543.28	40°10'31.668"N	104°46'19.035"W	0.72	
4720.00	9.280	287.390	4670.82	-127.84	132.72	-557.54	40°10'31.714"N	104°46'19.219"W	0.78	
4810.00	9.140	287.650	4759.66	-132.05	137.05	-571.28	40°10'31.757"N	104°46'19.396"W	0.16	
4900.00	7.820	279.660	4848.68	-135.14	140.25	-584.13	40°10'31.789"N	104°46'19.561"W	1.96	
4990.00	6.990	275.880	4937.93	-136.62	141.84	-595.61	40°10'31.805"N	104°46'19.709"W	1.07	
5080.00	5.140	267.620	5027.42	-136.94	142.23	-605.09	40°10'31.808"N	104°46'19.831"W	2.27	
5170.00	3.330	263.400	5117.17	-136.41	141.76	-611.71	40°10'31.804"N	104°46'19.916"W	2.04	
5260.00	2.170	249.470	5207.07	-135.48	140.87	-615.90	40°10'31.795"N	104°46'19.970"W	1.48	
5350.00	0.590	184.310	5297.04	-134.40	139.81	-617.53	40°10'31.784"N	104°46'19.992"W	2.22	
5710.00	0.690	198.760	5657.02	-130.49	135.91	-618.37	40°10'31.746"N	104°46'20.002"W	0.05	
6070.00	0.500	141.200	6017.00	-127.22	132.63	-618.08	40°10'31.714"N	104°46'19.999"W	0.17	
6430.00	0.550	151.920	6376.99	-124.49	129.88	-616.29	40°10'31.686"N	104°46'19.975"W	0.03	
6691.00	0.890	102.640	6637.97	-122.96	128.33	-613.72	40°10'31.671"N	104°46'19.942"W	0.26	
6790.00	3.490	164.580	6736.90	-119.90	125.26	-612.17	40°10'31.641"N	104°46'19.922"W	3.20	
6835.00	9.130	174.140	6781.61	-115.03	120.38	-611.44	40°10'31.593"N	104°46'19.913"W	12.71	
6880.00	14.490	173.710	6825.64	-105.89	111.23	-610.46	40°10'31.502"N	104°46'19.900"W	11.91	
6925.00	19.660	176.420	6868.64	-92.74	98.07	-609.37	40°10'31.372"N	104°46'19.886"W	11.62	
6970.00	23.780	178.360	6910.44	-76.11	81.44	-608.63	40°10'31.208"N	104°46'19.877"W	9.29	
7015.00	28.690	180.050	6950.79	-56.23	61.55	-608.38	40°10'31.011"N	104°46'19.874"W	11.04	
7060.00	34.190	181.040	6989.17	-32.77	38.09	-608.62	40°10'30.779"N	104°46'19.877"W	12.28	
7105.00	37.950	181.260	7025.53	-6.28	11.61	-609.16	40°10'30.518"N	104°46'19.884"W	8.36	
7150.00	39.650	181.840	7060.60	21.91	-16.58	-609.92	40°10'30.239"N	104°46'19.893"W	3.86	
7195.00	42.170	180.710	7094.61	51.37	-46.04	-610.57	40°10'29.948"N	104°46'19.902"W	5.84	
7240.00	47.310	182.110	7126.56	83.03	-77.69	-611.37	40°10'29.635"N	104°46'19.912"W	11.63	
7285.00	52.990	182.640	7155.39	117.55	-112.19	-612.80	40°10'29.294"N	104°46'19.930"W	12.65	
7330.00	57.630	181.960	7180.99	154.52	-149.15	-614.28	40°10'28.929"N	104°46'19.950"W	10.39	
7375.00	61.290	181.720	7203.85	193.26	-187.88	-615.52	40°10'28.546"N	104°46'19.965"W	8.15	
7420.00	65.340	181.320	7224.06	233.45	-228.07	-616.59	40°10'28.149"N	104°46'19.979"W	9.03	
7465.00	70.340	181.410	7241.03	275.11	-269.72	-617.58	40°10'27.738"N	104°46'19.992"W	11.11	
7510.00	74.140	181.990	7254.75	317.95	-312.55	-618.85	40°10'27.314"N	104°46'20.008"W	8.53	
7540.00	76.010	181.690	7262.48	346.93	-341.52	-619.79	40°10'27.028"N	104°46'20.020"W	6.31	
7570.00	77.610	181.740	7269.32	376.13	-370.71	-620.66	40°10'26.740"N	104°46'20.032"W	5.34	
7600.00	79.750	181.390	7275.21	405.54	-400.12	-621.46	40°10'26.449"N	104°46'20.042"W	7.22	
7630.00	81.720	181.090	7280.04	435.14	-429.72	-622.10	40°10'26.156"N	104°46'20.050"W	6.64	
7660.00	82.890	180.620	7284.06	464.87	-459.44	-622.55	40°10'25.863"N	104°46'20.056"W	4.20	
7690.00	84.990	180.360	7287.22	494.70	-489.27	-622.80	40°10'25.568"N	104°46'20.059"W	7.05	
7723.00†	86.514	180.466	7289.67	527.61	-522.18	-623.04	40°10'25.243"N	104°46'20.062"W	4.63	7" CASING POINT
7787.00	89.470	180.670	7291.91	591.56	-586.13	-623.67	40°10'24.611"N	104°46'20.070"W	4.63	
7877.00	88.980	179.380	7293.13	681.55	-676.12	-623.71	40°10'23.721"N	104°46'20.071"W	1.53	
7967.00	89.070	180.190	7294.66	771.53	-766.11	-623.37	40°10'22.832"N	104°46'20.066"W	0.91	



# Actual Wellpath Report

## RATTLER 34N-3HZ AWP

Page 4 of 7



### REFERENCE WELLPATH IDENTIFICATION

Operator	KERR-MCGEE OIL & GAS ONSHORE LP	Slot	SLOT#30 RATTLER 34N-3HZ (281'FSL & 761'FWL, SEC.34)
Area	COLORADO	Well	RATTLER 34N-3HZ
Field	WELD COUNTY (KERR MCGEE)	Wellbore	RATTLER 34N-3HZ AWP
Facility	SEC.34-T3N-R66W		

### WELLPATH DATA (136 stations)

MD [ft]	Inclination [°]	Azimuth [°]	TVD [ft]	Vert Sect [ft]	North [ft]	East [ft]	Latitude	Longitude	DLS [°/100ft]	Comments
8057.00	88.480	178.920	7296.58	861.49	-856.08	-622.68	40°10'21.943"N	104°46'20.057"W	1.56	
8147.00	89.190	179.740	7298.41	951.46	-946.06	-621.62	40°10'21.054"N	104°46'20.044"W	1.21	
8237.00	89.840	180.230	7299.18	1041.45	-1036.05	-621.60	40°10'20.165"N	104°46'20.043"W	0.90	
8327.00	90.430	180.470	7298.96	1131.45	-1126.05	-622.15	40°10'19.275"N	104°46'20.051"W	0.71	
8417.00	90.430	179.570	7298.29	1221.44	-1216.05	-622.18	40°10'18.386"N	104°46'20.051"W	1.00	
8507.00	90.330	179.120	7297.69	1311.42	-1306.04	-621.15	40°10'17.497"N	104°46'20.038"W	0.51	
8597.00	92.620	180.550	7295.37	1401.38	-1396.00	-620.89	40°10'16.608"N	104°46'20.034"W	3.00	
8687.00	90.800	179.970	7292.69	1491.33	-1485.95	-621.30	40°10'15.719"N	104°46'20.039"W	2.12	
8777.00	90.640	179.390	7291.56	1581.31	-1575.95	-620.80	40°10'14.829"N	104°46'20.033"W	0.67	
8867.00	90.710	179.160	7290.50	1671.29	-1665.93	-619.66	40°10'13.940"N	104°46'20.018"W	0.27	
8957.00	90.030	180.450	7289.92	1761.28	-1755.93	-619.35	40°10'13.051"N	104°46'20.014"W	1.62	
9047.00	90.640	180.650	7289.39	1851.27	-1845.92	-620.22	40°10'12.161"N	104°46'20.025"W	0.71	
9137.00	89.500	181.850	7289.28	1941.26	-1935.90	-622.18	40°10'11.272"N	104°46'20.051"W	1.84	
9317.00	90.000	181.660	7290.07	2121.22	-2115.81	-627.69	40°10'09.494"N	104°46'20.122"W	0.30	
9497.00	89.560	180.900	7290.76	2301.20	-2295.76	-631.71	40°10'07.716"N	104°46'20.173"W	0.49	
9677.00	89.190	180.970	7292.72	2481.18	-2475.73	-634.65	40°10'05.938"N	104°46'20.211"W	0.21	
9857.00	91.170	181.450	7292.16	2661.16	-2655.68	-638.45	40°10'04.159"N	104°46'20.260"W	1.13	
10037.00	91.350	180.320	7288.20	2841.11	-2835.61	-641.23	40°10'02.381"N	104°46'20.296"W	0.64	
10217.00	90.030	179.110	7286.03	3021.07	-3015.59	-640.34	40°10'00.603"N	104°46'20.284"W	0.99	
10307.00	89.930	180.030	7286.06	3111.06	-3105.58	-639.66	40°09'59.713"N	104°46'20.275"W	1.03	
10397.00	89.500	180.510	7286.51	3201.05	-3195.58	-640.08	40°09'58.824"N	104°46'20.281"W	0.72	
10487.00	89.500	180.190	7287.29	3291.05	-3285.57	-640.63	40°09'57.935"N	104°46'20.288"W	0.36	
10578.00	88.820	179.910	7288.63	3382.04	-3376.56	-640.71	40°09'57.036"N	104°46'20.289"W	0.81	
10668.00	89.500	180.140	7289.95	3472.02	-3466.55	-640.75	40°09'56.146"N	104°46'20.289"W	0.80	
10757.00	88.940	178.990	7291.16	3561.00	-3555.54	-640.08	40°09'55.267"N	104°46'20.281"W	1.44	
10847.00	89.590	179.290	7292.31	3650.97	-3645.52	-638.73	40°09'54.378"N	104°46'20.263"W	0.80	
10937.00	89.620	179.270	7292.93	3740.95	-3735.51	-637.60	40°09'53.488"N	104°46'20.249"W	0.04	
11027.00	91.170	180.570	7292.31	3830.93	-3825.51	-637.47	40°09'52.599"N	104°46'20.247"W	2.25	
11117.00	90.890	179.800	7290.70	3920.92	-3915.49	-637.76	40°09'51.710"N	104°46'20.251"W	0.91	
11207.00	90.240	181.020	7289.81	4010.91	-4005.48	-638.40	40°09'50.821"N	104°46'20.259"W	1.54	
11297.00	90.300	180.280	7289.38	4100.91	-4095.47	-639.42	40°09'49.931"N	104°46'20.272"W	0.82	
11387.00	90.890	182.340	7288.45	4190.89	-4185.44	-641.48	40°09'49.042"N	104°46'20.299"W	2.38	
11477.00	89.720	181.090	7287.97	4280.86	-4275.40	-644.18	40°09'48.153"N	104°46'20.333"W	1.90	
11568.00	89.750	181.580	7288.39	4371.85	-4366.37	-646.30	40°09'47.254"N	104°46'20.361"W	0.54	
11748.00	89.660	179.920	7289.32	4551.84	-4546.35	-648.65	40°09'45.476"N	104°46'20.391"W	0.92	
11927.00	89.380	180.150	7290.82	4730.83	-4725.34	-648.76	40°09'43.707"N	104°46'20.392"W	0.20	
12018.00	88.950	180.980	7292.14	4821.82	-4816.32	-649.66	40°09'42.808"N	104°46'20.404"W	1.03	
12108.00	87.870	180.770	7294.64	4911.78	-4906.28	-651.03	40°09'41.919"N	104°46'20.421"W	1.22	
12198.00	88.300	180.650	7297.65	5001.73	-4996.22	-652.15	40°09'41.030"N	104°46'20.436"W	0.50	
12288.00	87.250	181.720	7301.14	5091.65	-5086.13	-654.01	40°09'40.142"N	104°46'20.460"W	1.67	
12378.00	86.910	181.430	7305.73	5181.52	-5175.98	-656.48	40°09'39.254"N	104°46'20.491"W	0.50	
12468.00	86.480	180.910	7310.92	5271.37	-5265.81	-658.31	40°09'38.366"N	104°46'20.515"W	0.75	
12558.00	86.020	180.380	7316.80	5361.17	-5355.61	-659.32	40°09'37.479"N	104°46'20.528"W	0.78	
12648.00	85.450	180.610	7323.50	5450.92	-5445.36	-660.10	40°09'36.592"N	104°46'20.538"W	0.68	
12698.00	85.150	180.420	7327.59	5500.75	-5495.19	-660.55	40°09'36.099"N	104°46'20.544"W	0.71	LAST BHI MWD+IFR SURVEY





# Actual Wellpath Report

RATTLER 34N-3HZ AWP

Page 5 of 7



## REFERENCE WELLPATH IDENTIFICATION

Operator	KERR-MCGEE OIL & GAS ONSHORE LP	Slot	SLOT#30 RATTLER 34N-3HZ (281'FSL & 761'FWL, SEC.34)
Area	COLORADO	Well	RATTLER 34N-3HZ
Field	WELD COUNTY (KERR MCGEE)	Wellbore	RATTLER 34N-3HZ AWB
Facility	SEC.34-T3N-R66W		

## WELLPATH DATA (136 stations)

MD [ft]	Inclination [°]	Azimuth [°]	TVD [ft]	Vert Sect [ft]	North [ft]	East [ft]	Latitude	Longitude	DLS [°/100ft]	Comments
12749.00	85.150	180.420	7331.90	5551.57	-5546.00	-660.92	40°09'35.597"N	104°46'20.548"W	0.00	PROJECTION TO BIT

## HOLE & CASING SECTIONS - Ref Wellbore: RATTLER 34N-3HZ AWB Ref Wellpath: RATTLER 34N-3HZ AWP

String/Diameter	Start MD [ft]	End MD [ft]	Interval [ft]	Start TVD [ft]	End TVD [ft]	Start N/S [ft]	Start E/W [ft]	End N/S [ft]	End E/W [ft]
13.5in Open Hole	13.00	814.00	801.00	13.00	813.99	0.00	0.00	0.33	2.37
9.625in Casing Surface	13.00	814.00	801.00	13.00	813.99	0.00	0.00	0.33	2.37
8.75in Open Hole	814.00	7743.00	6929.00	813.99	7290.72	0.33	2.37	-542.15	-623.21
7in Casing Intermediate	13.00	7723.00	7710.00	13.00	7289.67	0.00	0.00	-522.18	-623.04
6.125in Open Hole	7743.00	12749.00	5006.00	7290.72	7331.90	-542.15	-623.21	-5546.00	-660.92

## TARGETS

Name	MD [ft]	TVD [ft]	North [ft]	East [ft]	Grid East [US ft]	Grid North [US ft]	Latitude	Longitude	Shape
CANNON RED W 3-12 (150' RADIUS)		-3.00	-3568.73	-310.05	3203701.24	1303904.79	40°09'55.137"N	104°46'16.030"W	circle
SEC.03-T2N-R66W HARD LINES (460' SET BACKS)		4983.00	96.58	1444.42	3205425.40	1307584.26	40°10'31.357"N	104°45'53.428"W	polygon
SEC.03-T2N-R66W SECTION LINES		4983.00	96.58	1444.42	3205425.40	1307584.26	40°10'31.357"N	104°45'53.428"W	polygon
SEC.34-T3N-R66W HARD LINES (460' SET BACKS)		4983.00	96.58	1444.42	3205425.40	1307584.26	40°10'31.357"N	104°45'53.428"W	polygon
SEC.34-T3N-R66W SECTION LINES		4983.00	96.58	1444.42	3205425.40	1307584.26	40°10'31.357"N	104°45'53.428"W	polygon
RATTLER 34N-3HZ BHL ON PLAT REV-1 (01'FSL & 110'FWL, SEC.03)		7291.00	-5571.90	-694.58	3203333.23	1301898.61	40°09'35.341"N	104°46'20.982"W	point
RATTLER 34N-3HZ BHL REV-2 (01'FSL & 135'FWL, SEC.03)		7291.00	-5571.92	-694.58	3203333.23	1301898.59	40°09'35.341"N	104°46'20.982"W	point
RATTLER 34N-3HZ LAND BOX		7297.00	0.00	0.00	3203981.89	1307475.79	40°10'30.403"N	104°46'12.036"W	polygon



# Actual Wellpath Report

RATTLER 34N-3HZ AWP

Page 6 of 7



## REFERENCE WELLPATH IDENTIFICATION

Operator	KERR-MCGEE OIL & GAS ONSHORE LP	Slot	SLOT#30 RATTLER 34N-3HZ (281'FSL & 761'FWL, SEC.34)
Area	COLORADO	Well	RATTLER 34N-3HZ
Field	WELD COUNTY (KERR MCGEE)	Wellbore	RATTLER 34N-3HZ AWB
Facility	SEC.34-T3N-R66W		

## WELLPATH COMPOSITION - Ref Wellbore: RATTLER 34N-3HZ AWB Ref Wellpath: RATTLER 34N-3HZ AWP

Start MD [ft]	End MD [ft]	Positional Uncertainty Model	Log Name/Comment	Wellbore
13.00	713.00	Generic gyro - continuous (Standard)	MS GYRODATA SURVEYS <116-716>	RATTLER 34N-3HZ AWB
713.00	7690.00	NaviTrak (MAGCORR,IFR)	BHI MWD+IFR SURVEYS 8 3/4" HOLE <889-7690>	RATTLER 34N-3HZ AWB
7690.00	12698.00	OnTrak (MAGCORR,IFR)	BHI MWD+IFR SURVEYS 6/18" HOLE <7787-12698>	RATTLER 34N-3HZ AWB
12698.00	12749.00	Blind Drilling (std)	Projection to bit	RATTLER 34N-3HZ AWB



# Actual Wellpath Report

RATTLER 34N-3HZ AWP

Page 7 of 7



## REFERENCE WELLPATH IDENTIFICATION

Operator	KERR-MCGEE OIL & GAS ONSHORE LP	Slot	SLOT#30 RATTLER 34N-3HZ (281'FSL & 761'FWL, SEC.34)
Area	COLORADO	Well	RATTLER 34N-3HZ
Field	WELD COUNTY (KERR MCGEE)	Wellbore	RATTLER 34N-3HZ AWP
Facility	SEC.34-T3N-R66W		

## WELLPATH COMMENTS

MD [ft]	Inclination [°]	Azimuth [°]	TVD [ft]	Comment
13.00	0.000	11.670	13.00	TIE-ON
113.00	0.200	11.670	113.00	BEGIN GYRO SURVEYS
713.00	0.460	112.500	712.99	TIE ONTO GYRO SURVEYS
899.00	0.710	225.580	898.99	BEGIN BHI MWD+IFR SURVEYS
7723.00	86.514	180.466	7289.67	7" CASING POINT
12698.00	85.150	180.420	7327.59	LAST BHI MWD+IFR SURVEY
12749.00	85.150	180.420	7331.90	PROJECTION TO BIT