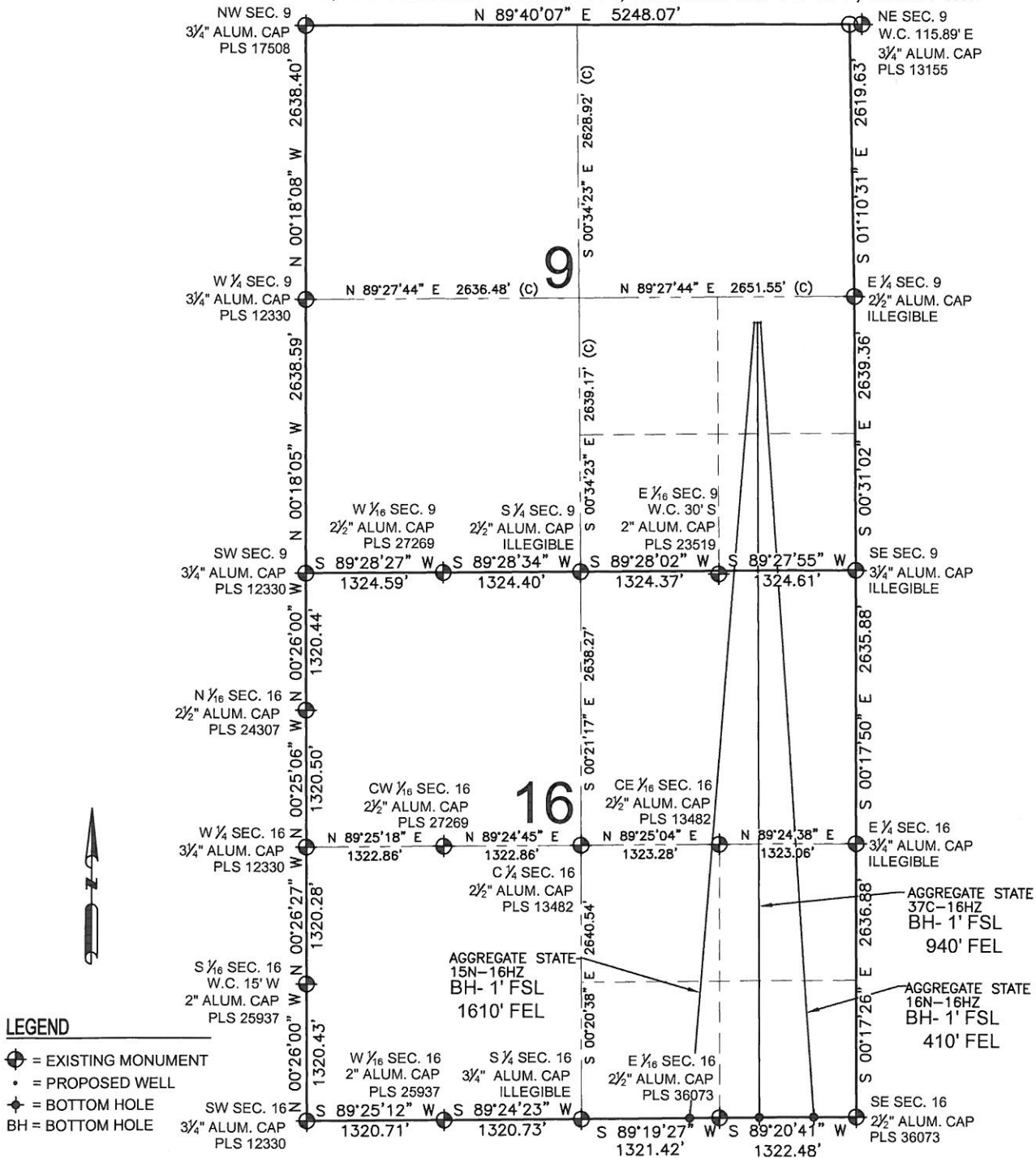


AGGREGATE STATE 37C-16HZ MULTI-WELL PLAN

SECTION 9, TOWNSHIP 2 NORTH, RANGE 66 WEST, 6TH P.M.



LEGEND

- ⊙ = EXISTING MONUMENT
- = PROPOSED WELL
- ⊕ = BOTTOM HOLE
- BH = BOTTOM HOLE

NOTES:

AGGREGATE STATE 15N-16HZ TO BE AT 2389' FSL, 970' FEL.
 BOTTOM HOLE AT 1' FSL & 1610' FEL, SEC 16
 AGGREGATE STATE 37C-16HZ TO BE AT 2389' FSL, 940' FEL.
 BOTTOM HOLE AT 1' FSL & 940' FEL, SEC 16
 AGGREGATE STATE 16N-16HZ TO BE AT 2389' FSL, 910' FEL.
 BOTTOM HOLE AT 1' FSL & 410' FEL, SEC 16

PREPARED BY:



KERR-MCGEE OIL & GAS ONSHORE LP

FIELD DATE: 05-30-13	SURFACE LOCATION: NE 1/4 SE 1/4, SEC. 9, T2N, R66W, 6TH P.M.
DRAWING DATE: 06-05-13	WELD COUNTY, COLORADO