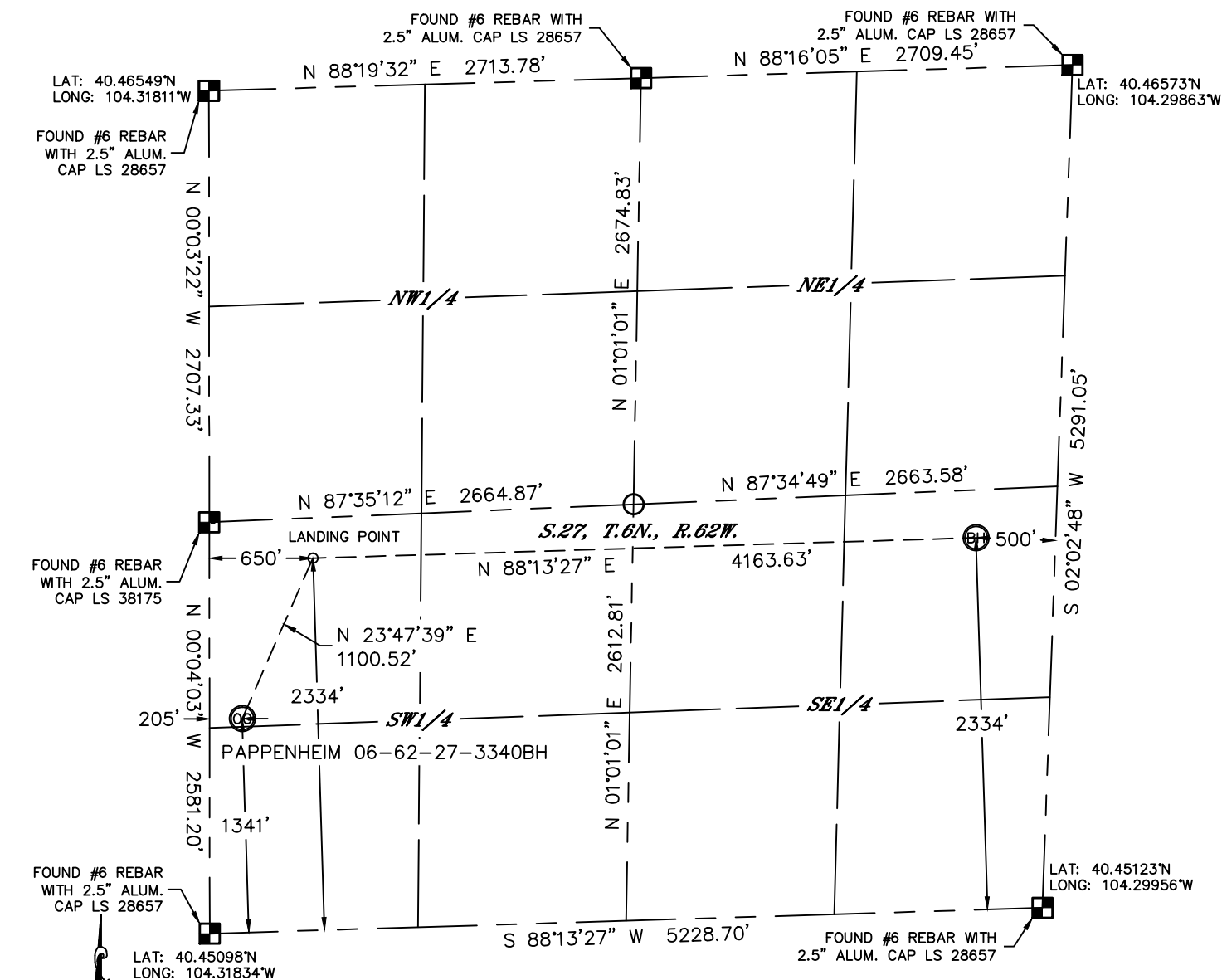


Lat40°, Inc. 1635 Foxtrail Drive, Suite 325 Loveland, CO 970-776-3321

# WELL LOCATION CERTIFICATE

THIS MAP DOES NOT REPRESENT A BOUNDARY SURVEY

SECTION: 27  
TOWNSHIP: 6N  
RANGE: 62W



In accordance with a request from Jeff Fandrich with BILL BARRETT CORPORATION Lat40', Inc. has determined the surface location of the PAPPENHEIM 06-62-27-3340BH to be 1341' from the SOUTH line and 205' from the WEST line and the bottom hole to be 2334' from the SOUTH line and 500' from the EAST line as measured at right angles from the section lines of Section 27, Township 6 North, Range 62 West of the Sixth Principal Meridian, County of Weld, State of Colorado.

I hereby state that this Well Location Certificate was prepared by me, or under my direct supervision, that the fieldwork was completed on 2/11/2013, for and on behalf of BILL BARRETT CORPORATION. That this is not a Land Survey Plat or an Improvement Survey Plat, and that it is not to be relied upon for establishment of fence, building, or other future improvement lines.

SURFACE LOCATION

LAT: 40.45467°N (40°27'16.8"N)  
 LONG: 104.31755°W (104°19'03.2"W)  
 PDOP: 2.0  
 ELEV: 4725'  
 1/4,1/4: NW1/4SW1/4

BOTTOM HOLE

LAT: 40.45761°N (40°27'27.4"N)  
LONG: 104.30095°W (104°18'03.4"W)

LANDING POINT

LAT: 40.45741°N (40°27'26.7"N)  
LONG: 104.31591°W (104°18'57.3"W)

NOTE:

1) Bearings shown are Grid Bearings of the Colorado State Plane Coordinate System, North Zone, North American Datum 1983/2007. The lineal dimensions as contained herein are based upon the "U.S. Survey Foot."

2) Ground elevations are based on an observed GPS elevation (NAVD 1988 DATUM).

3) IMPROVEMENTS: See LOCATION DRAWING for all visible improvements within 500' of disturbed area.

4) SURFACE USE: RANGELAND

5) INSTRUMENT OPERATOR: WYATT HALL

6) NEAREST EXISTING WELL: NONE IN SECTION

NEAREST CULTURAL ITEMS:

BUILDING: 4950'+/-

BUILDING UNIT: 5180'+/-

HIGH OCCUPANCY BUILDING UNIT: 5280'+

DESIGNATED OUTSIDE ACT

PUBLIC ROAD: 4970'+/-

ABOVEGROUND UTILITIES

RAILROAD: 5280'+

### LEGEND

 = ALIQUOT MONUMENT AS DESCRIBED

○ = CALCULATED POSITION

Kyle E. Rutz—On behalf of Lat49, Inc.

Colorado Licensed Professional

Land Surveyor No. 38307

DATE: rev.8/27/2013  
PROJECT#: 2013018

