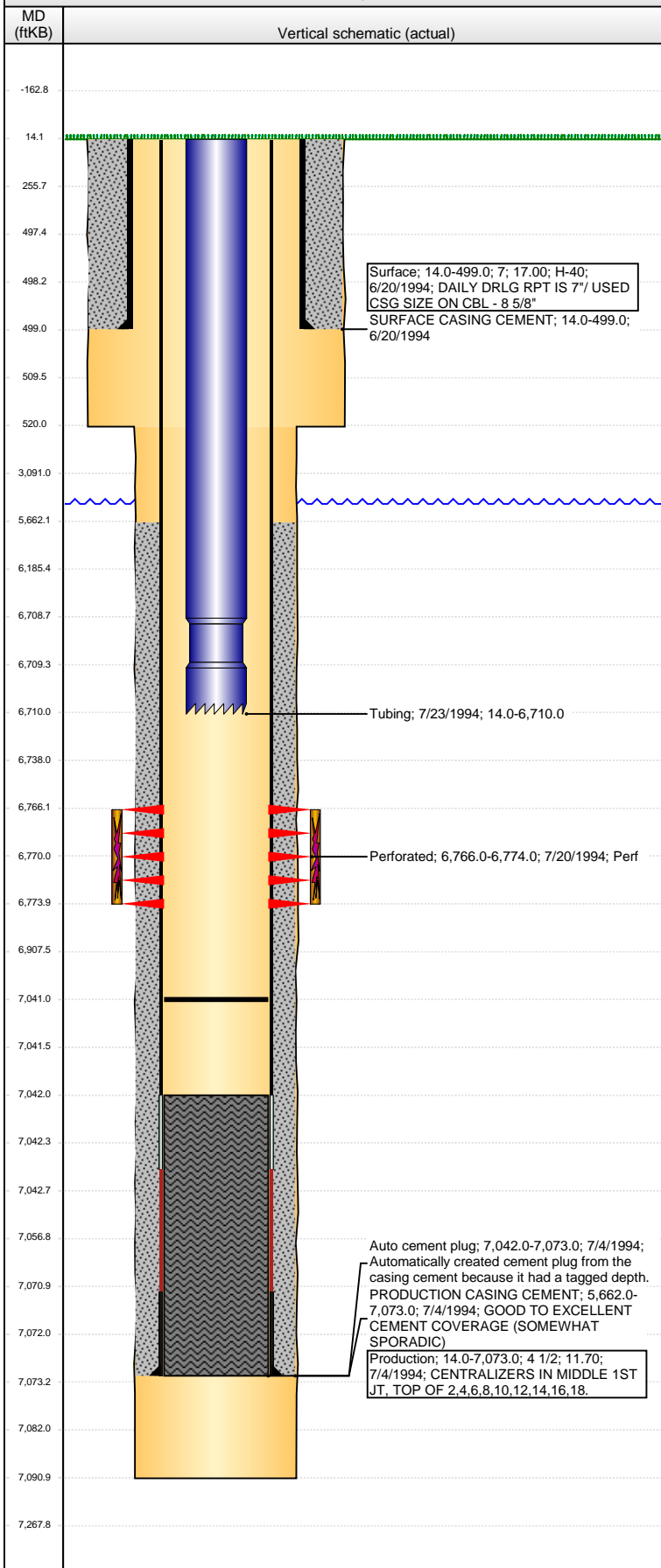


Well Name: STATE 26-10J2

VERTICAL - ORIGINAL HOLE, 9/11/2013 4:00:54 PM



Well Header							
API 05-123-18337		Business Unit WATTENBERG		District 15		Well Config VERTICAL	
Original KB Elevation (ft) 4,709.00		KB - GL / MSL (ftKB) 14.00		Spud Date 6/19/1994		P & A Date	
Comment STATE REPORTS DIFFERENT HOLE SIZES (12.25" FOR SURFACE AND 7 7/8" FOR PRODUCTION)							
Directions To Well							
Congressional Location							
Quarter 1	Quarter 2	Quarter 3	Quarter 4	Section	Township	Twnshp N...	Range Rng E/W Dir
		NW	SE	26	3	N	62 W
Bottom Hole Location							
North-South Distance (ft)		From N or S Line		East-West Distance (ft)		From E or W Line	
Plug Back Total Depths							
Date	Depth (ftKB)	Method		Com			
7/4/1994	7,042.0	CASING TALLY		LATCH DOWN BAFFLE REPORTED @ 7042'			
7/20/1994	7,031.0	CASED HOLE LOG		DEPTH LOGGER ON CBL			
7/23/1994	7,041.0	TAG		TAGGED FILL @6876", BAILED 165' TO PBTD @7...			
Wellbore Sections							
Section Des		Size (in)		Act Top (ftKB)		Act Btm (ftKB)	
SURFACE		9 7/8		14.0		520.0	
PRODUCTION		6 1/4		520.0		7,091.0	
Zone Statuses							
Zone Name	Status Date	Status		Job			
J SAND	8/8/1994	PR		DRILLING/COMPLETION - ORIGINAL, 6/19/1994 00:00			
Casing Strings							
Surface, 499.0ftKB							
Casing Description	Run Date	OD (in)	Wt/Len (l...	Grade	Top (ftKB)	MD (ftKB)	
Surface	6/20/1994	7	17.00	H-40	14.0	499.0	
Production, 7,073.0ftKB							
Casing Description	Run Date	OD (in)	Wt/Len (l...	Grade	Top (ftKB)	MD (ftKB)	
Production	7/4/1994	4 1/2	11.70		14.0	7,073.0	
Cement							
Description				Top Depth (ftKB)		Bottom Depth (ftKB)	
SURFACE CASING CEMENT				14.0		499.0	
Description				Top Depth (ftKB)		Bottom Depth (ftKB)	
PRODUCTION CASING CEMENT				5,662.0		7,073.0	
Tubing Components							
Item Des	OD (in)	Wt (lb/ft)	Grade	Jts	Len (ft)	Btm (ftKB)	Btm (TVD) (ftKB)
EUE 8rd Tubing	2 3/8			215	6,694.50	6,708.5	
Notched collar	2 3/8				1.50	6,710.0	
Perforation Data							
Zone	Bnch/St g	Entered Shot Total	Top (ftKB)	Btm (ftKB)	Date		
J SAND, ORIGINAL HOLE		32	6,766.00	6,774.00	7/20/1994		
Stimulations & Treatments							
Date	Zone	Primary Job Type					
7/21/1994	J SAND, ORIGINAL HOLE	DRILLING/COMPLETION - ORIGINAL					
Technical Result		Tech Result Details			Tech Result Note		
Comment DATE IMPORTED, CANNOT CONFIRM							
Other In Hole							
Run Date	Des			OD (in)	Top (ftKB)	Btm (ftKB)	
Logs							
Date	Type				Top (ftKB)	Btm (ftKB)	
7/3/1994	COMPENSATED DENSITY				3,750.0	7,078.0	
7/3/1994	INDUCTION				478.0	7,078.0	
7/20/1994	CEMENT BOND				5,550.0	7,026.0	