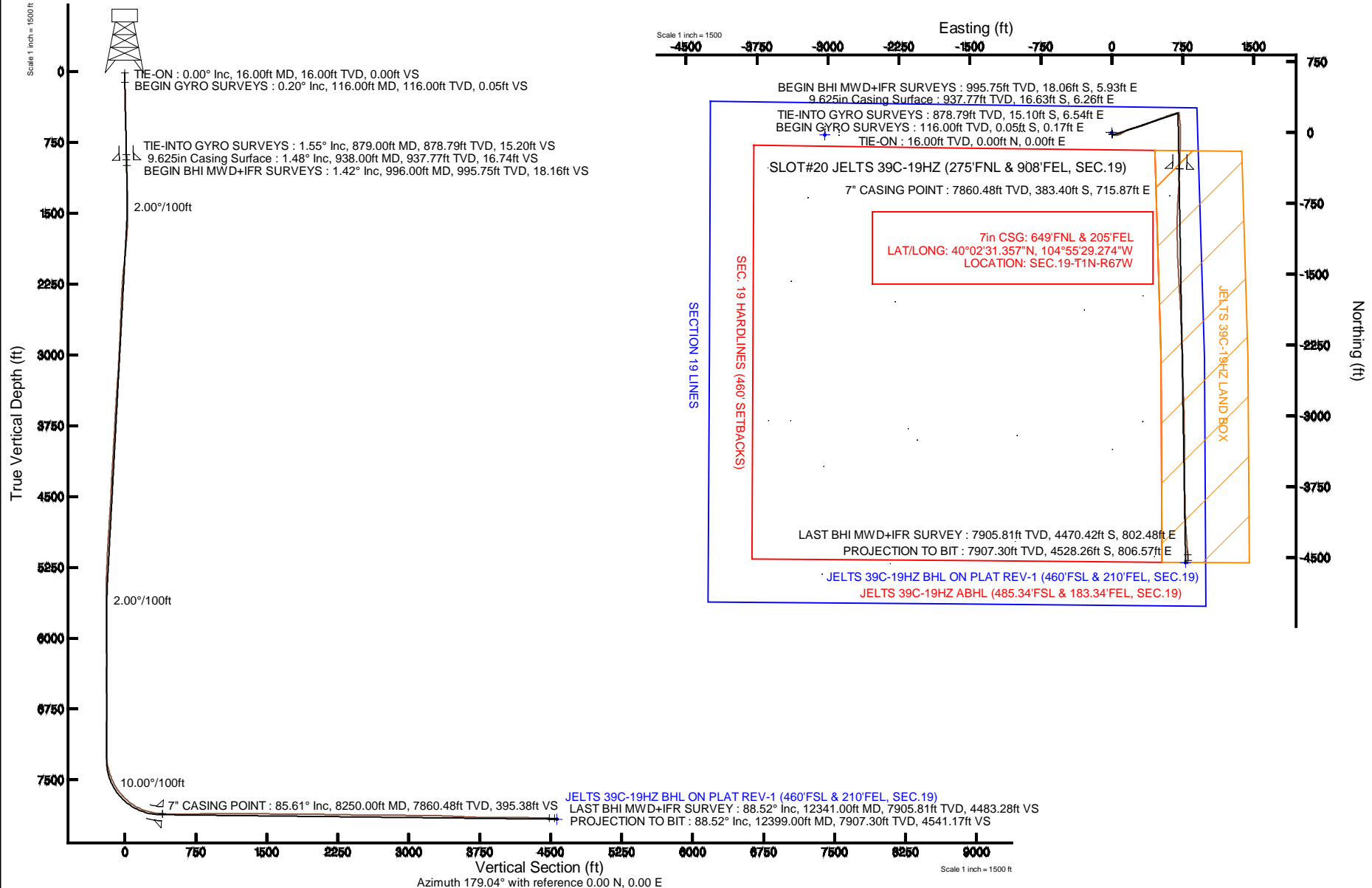


KERR-MCGEE OIL & GAS ONSHORE LP

Location: COLORADO Slot: SLOT#20 JELTS 39C-19HZ (275'FNL & 908'FEL, SEC.19)
 Field: WELD COUNTY (KERR MCGEE) Well: JELTS 39C-19HZ
 Facility: SEC.19-T1N-R67W Wellbore: JELTS 39C-19HZ PWB

Plot reference wellpath is JELTS 39C-19HZ (REV-A.1) PWP

True vertical depths are referenced to XTREME 24 (RKB)	Grid System: NAD83 / Lambert Colorado SP, Northern Zone (501), US feet
Measured depths are referenced to XTREME 24 (RKB)	North Reference: True north
XTREME 24 (RKB) to Mean Sea Level: 5174 feet	Scale: True distance
Mean Sea Level to Mud line (At Slot: SLOT#20 JELTS 39C-19HZ (275'FNL & 908'FEL, SEC.19)): 0 feet	Depths are in feet
Coordinates are in feet referenced to Slot	Created by: robale01 on 11/Jul/2013





Actual Wellpath Report

JELTS 39C-19HZ AWP

Page 1 of 7



REFERENCE WELLPATH IDENTIFICATION

Operator	KERR-MCGEE OIL & GAS ONSHORE LP	Slot	SLOT#20 JELTS 39C-19HZ (275'FNL & 908'FEL, SEC.19)
Area	COLORADO	Well	JELTS 39C-19HZ
Field	WELD COUNTY (KERR MCGEE)	Wellbore	JELTS 39C-19HZ AWB
Facility	SEC.19-T1N-R67W		

REPORT SETUP INFORMATION

Projection System	NAD83 / Lambert Colorado SP, Northern Zone (501), US feet	Software System	WellArchitect® 4.0.0
North Reference	True	User	Robiale01
Scale	0.999963	Report Generated	11/Jul/2013 at 14:17
Convergence at slot	n/a	Database/Source file	WA_ANADARKO/JELTS_39C-19HZ_AWB.xml

WELLPATH LOCATION

	Local coordinates		Grid coordinates		Geographic coordinates	
	North[ft]	East[ft]	Easting[US ft]	Northing[US ft]	Latitude	Longitude
Slot Location	25.99	3032.65	3160326.06	1259063.33	40°02'35.146"N	104°55'38.478"W
Facility Reference Pt			3157293.75	1259018.13	40°02'34.891"N	104°56'17.471"W
Field Reference Pt			3197771.84	1268891.29	40°04'09.600"N	104°47'36.000"W

WELLPATH DATUM

Calculation method	Minimum curvature	XTREME 24 (RKB) to Facility Vertical Datum	5174.00ft
Horizontal Reference Pt	Slot	XTREME 24 (RKB) to Mean Sea Level	5174.00ft
Vertical Reference Pt	XTREME 24 (RKB)	XTREME 24 (RKB) to Mud Line at Slot (SLOT#20 JELTS 39C-19HZ (275'FNL & 908'FEL, SEC.19))	5174.00ft
MD Reference Pt	XTREME 24 (RKB)	Section Origin	N 0.00, E 0.00 ft
Field Vertical Reference	Mean Sea Level	Section Azimuth	169.90°



Actual Wellpath Report

JELTS 39C-19HZ AWP

Page 2 of 7



REFERENCE WELLPATH IDENTIFICATION

Operator	KERR-MCGEE OIL & GAS ONSHORE LP	Slot	SLOT#20 JELTS 39C-19HZ (275'FNL & 908'FEL, SEC.19)
Area	COLORADO	Well	JELTS 39C-19HZ
Field	WELD COUNTY (KERR MCGEE)	Wellbore	JELTS 39C-19HZ AWP
Facility	SEC.19-T1N-R67W		

WELLPATH DATA (147 stations) † = interpolated/extrapolated station

MD [ft]	Inclination [°]	Azimuth [°]	TVD [ft]	Vert Sect [ft]	North [ft]	East [ft]	Latitude	Longitude	DLS [°/100ft]	Comments
0.00†	0.000	105.060	0.00	0.00	0.00	0.00	40°02'35.146"N	104°55'38.478"W	0.00	
16.00	0.000	105.060	16.00	0.00	0.00	0.00	40°02'35.146"N	104°55'38.478"W	0.00	TIE-ON
116.00	0.200	105.060	116.00	0.07	-0.05	0.17	40°02'35.146"N	104°55'38.476"W	0.20	BEGIN GYRO SURVEYS
216.00	0.850	140.690	216.00	0.80	-0.66	0.81	40°02'35.139"N	104°55'38.468"W	0.70	
316.00	1.480	145.170	315.97	2.62	-2.30	2.01	40°02'35.123"N	104°55'38.452"W	0.64	
416.00	2.130	146.510	415.92	5.49	-4.91	3.78	40°02'35.097"N	104°55'38.429"W	0.65	
516.00	1.760	156.760	515.87	8.70	-7.87	5.41	40°02'35.068"N	104°55'38.408"W	0.51	
616.00	0.880	163.920	615.84	10.96	-10.02	6.23	40°02'35.047"N	104°55'38.398"W	0.89	
716.00	1.270	170.190	715.82	12.83	-11.85	6.63	40°02'35.029"N	104°55'38.393"W	0.41	
816.00	0.930	186.410	815.80	14.71	-13.75	6.73	40°02'35.010"N	104°55'38.392"W	0.46	
879.00	1.550	188.820	878.79	16.01	-15.10	6.54	40°02'34.997"N	104°55'38.394"W	0.99	TIE-INTO GYRO SURVEYS
996.00	1.420	194.560	995.75	18.82	-18.06	5.93	40°02'34.967"N	104°55'38.402"W	0.17	BEGIN BHI MWD+IFR SURVEYS
1090.00	1.840	144.740	1089.71	21.25	-20.42	6.51	40°02'34.944"N	104°55'38.394"W	1.52	
1185.00	3.870	114.140	1184.60	24.43	-22.98	10.32	40°02'34.919"N	104°55'38.345"W	2.60	
1279.00	5.030	107.880	1278.31	28.15	-25.54	17.13	40°02'34.894"N	104°55'38.258"W	1.34	
1373.00	6.270	102.070	1371.85	32.02	-27.88	26.08	40°02'34.870"N	104°55'38.143"W	1.45	
1467.00	8.340	92.380	1465.09	35.43	-29.24	37.91	40°02'34.857"N	104°55'37.991"W	2.56	
1562.00	9.480	82.040	1558.95	37.21	-28.44	52.54	40°02'34.865"N	104°55'37.802"W	2.06	
1656.00	11.080	70.730	1651.45	36.06	-24.39	68.74	40°02'34.905"N	104°55'37.594"W	2.73	
1750.00	10.880	66.450	1743.73	32.56	-17.86	85.40	40°02'34.969"N	104°55'37.380"W	0.89	
1844.00	10.760	61.440	1836.06	27.72	-10.12	101.24	40°02'35.046"N	104°55'37.176"W	1.01	
1938.00	10.980	58.490	1928.37	21.67	-1.25	116.58	40°02'35.134"N	104°55'36.979"W	0.64	
2033.00	10.530	53.870	2021.70	14.56	8.60	131.30	40°02'35.231"N	104°55'36.790"W	1.02	
2124.00	11.060	59.070	2111.10	7.81	17.99	145.50	40°02'35.324"N	104°55'36.607"W	1.22	
2216.00	10.650	64.180	2201.45	2.36	26.23	160.73	40°02'35.405"N	104°55'36.411"W	1.14	
2307.00	9.790	71.550	2291.01	-1.04	32.34	175.64	40°02'35.466"N	104°55'36.220"W	1.72	
2397.00	10.310	73.860	2379.63	-3.00	37.00	190.63	40°02'35.512"N	104°55'36.027"W	0.73	
2489.00	10.460	73.670	2470.12	-4.77	41.64	206.55	40°02'35.557"N	104°55'35.822"W	0.17	
2580.00	10.690	77.390	2559.58	-6.04	45.80	222.72	40°02'35.599"N	104°55'35.614"W	0.79	
2672.00	9.820	79.160	2650.11	-6.51	49.14	238.75	40°02'35.632"N	104°55'35.408"W	1.01	
2763.00	10.310	74.380	2739.71	-7.39	52.79	254.21	40°02'35.668"N	104°55'35.209"W	1.06	
2854.00	10.550	73.360	2829.20	-9.13	57.37	270.04	40°02'35.713"N	104°55'35.006"W	0.33	
2945.00	10.910	74.330	2918.61	-10.91	62.08	286.31	40°02'35.759"N	104°55'34.797"W	0.44	
3036.00	10.040	73.170	3008.10	-12.68	66.70	302.20	40°02'35.805"N	104°55'34.592"W	0.98	
3127.00	10.250	70.370	3097.67	-14.95	71.72	317.42	40°02'35.855"N	104°55'34.397"W	0.59	
3218.00	10.480	67.460	3187.19	-18.07	77.61	332.69	40°02'35.913"N	104°55'34.200"W	0.63	
3310.00	10.600	67.410	3277.64	-21.70	84.07	348.23	40°02'35.977"N	104°55'34.001"W	0.13	
3402.00	11.270	70.370	3367.97	-25.02	90.34	364.51	40°02'36.039"N	104°55'33.791"W	0.95	
3493.00	10.290	66.960	3457.36	-28.31	96.51	380.36	40°02'36.100"N	104°55'33.587"W	1.28	
3584.00	10.410	67.850	3546.88	-31.85	102.79	395.46	40°02'36.162"N	104°55'33.393"W	0.22	
3677.00	9.200	70.540	3638.52	-34.81	108.44	410.25	40°02'36.218"N	104°55'33.203"W	1.39	
3770.00	9.540	72.490	3730.28	-37.02	113.23	424.61	40°02'36.265"N	104°55'33.018"W	0.50	
3863.00	10.140	69.060	3821.91	-39.55	118.48	439.60	40°02'36.317"N	104°55'32.826"W	0.90	
3957.00	9.940	66.530	3914.47	-42.98	124.66	454.77	40°02'36.378"N	104°55'32.631"W	0.52	
4050.00	9.290	73.270	4006.17	-45.71	130.02	469.33	40°02'36.431"N	104°55'32.444"W	1.40	



Actual Wellpath Report

JELTS 39C-19HZ AWP

Page 3 of 7



REFERENCE WELLPATH IDENTIFICATION

Operator	KERR-MCGEE OIL & GAS ONSHORE LP	Slot	SLOT#20 JELTS 39C-19HZ (275'FNL & 908'FEL, SEC.19)
Area	COLORADO	Well	JELTS 39C-19HZ
Field	WELD COUNTY (KERR MCGEE)	Wellbore	JELTS 39C-19HZ AWP
Facility	SEC.19-T1N-R67W		

WELLPATH DATA (147 stations)

MD [ft]	Inclination [°]	Azimuth [°]	TVD [ft]	Vert Sect [ft]	North [ft]	East [ft]	Latitude	Longitude	DLS [°/100ft]	Comments
4144.00	8.100	64.070	4099.09	-48.39	135.10	482.55	40°02'36.481"N	104°55'32.273"W	1.94	
4237.00	8.950	62.910	4191.06	-52.29	141.26	494.88	40°02'36.542"N	104°55'32.115"W	0.93	
4330.00	9.430	71.960	4282.87	-55.46	146.92	508.57	40°02'36.598"N	104°55'31.939"W	1.64	
4423.00	9.040	71.060	4374.67	-57.63	151.65	522.72	40°02'36.645"N	104°55'31.757"W	0.45	
4516.00	9.510	76.350	4466.45	-59.23	155.83	537.10	40°02'36.686"N	104°55'31.572"W	1.05	
4610.00	10.140	71.340	4559.08	-60.94	160.31	552.48	40°02'36.730"N	104°55'31.374"W	1.13	
4703.00	10.430	65.520	4650.58	-64.25	166.42	567.90	40°02'36.791"N	104°55'31.176"W	1.16	
4788.00	10.220	66.640	4734.21	-67.89	172.60	581.83	40°02'36.852"N	104°55'30.997"W	0.34	
4873.00	10.510	72.290	4817.82	-70.65	177.95	596.14	40°02'36.904"N	104°55'30.813"W	1.24	
4958.00	11.460	70.950	4901.27	-72.99	183.06	611.50	40°02'36.955"N	104°55'30.615"W	1.16	
5044.00	11.470	70.260	4985.55	-75.75	188.74	627.63	40°02'37.011"N	104°55'30.408"W	0.16	
5129.00	10.740	72.240	5068.96	-78.22	194.01	643.12	40°02'37.063"N	104°55'30.209"W	0.97	
5214.00	8.870	75.160	5152.71	-79.82	198.10	657.00	40°02'37.104"N	104°55'30.030"W	2.28	
5299.00	7.850	72.160	5236.81	-81.14	201.56	668.86	40°02'37.138"N	104°55'29.878"W	1.30	
5384.00	7.230	73.280	5321.07	-82.54	204.88	679.51	40°02'37.171"N	104°55'29.741"W	0.75	
5470.00	6.330	75.340	5406.47	-83.54	207.63	689.28	40°02'37.198"N	104°55'29.615"W	1.08	
5555.00	4.800	89.190	5491.07	-83.34	208.87	697.37	40°02'37.210"N	104°55'29.511"W	2.38	
5640.00	3.310	79.400	5575.86	-82.79	209.37	703.34	40°02'37.215"N	104°55'29.435"W	1.93	
5726.00	3.020	96.700	5661.73	-82.16	209.56	708.03	40°02'37.217"N	104°55'29.374"W	1.16	
5811.00	1.560	107.660	5746.66	-80.97	208.95	711.36	40°02'37.211"N	104°55'29.332"W	1.79	
5896.00	0.500	136.600	5831.64	-80.12	208.33	712.71	40°02'37.205"N	104°55'29.314"W	1.35	
5981.00	0.520	182.180	5916.64	-79.43	207.67	712.95	40°02'37.198"N	104°55'29.311"W	0.47	
6151.00	0.250	145.310	6086.64	-78.34	206.60	713.14	40°02'37.188"N	104°55'29.309"W	0.21	
6407.00	0.320	297.660	6342.64	-78.27	206.47	712.82	40°02'37.186"N	104°55'29.313"W	0.22	
6620.00	0.370	241.800	6555.63	-78.42	206.42	711.69	40°02'37.186"N	104°55'29.327"W	0.15	
6833.00	0.060	321.230	6768.63	-78.31	206.18	711.01	40°02'37.183"N	104°55'29.336"W	0.17	
7090.00	0.410	316.010	7025.63	-79.19	206.95	710.29	40°02'37.191"N	104°55'29.345"W	0.14	
7175.00	0.380	7.940	7110.63	-79.71	207.45	710.12	40°02'37.196"N	104°55'29.347"W	0.41	
7260.00	0.410	317.850	7195.63	-80.24	207.95	709.95	40°02'37.201"N	104°55'29.350"W	0.39	
7303.00	0.870	172.260	7238.62	-80.04	207.74	709.89	40°02'37.199"N	104°55'29.350"W	2.86	
7345.00	4.270	170.960	7280.58	-78.16	205.88	710.18	40°02'37.180"N	104°55'29.347"W	8.10	
7388.00	9.590	174.620	7323.25	-72.98	200.73	710.77	40°02'37.130"N	104°55'29.339"W	12.41	
7431.00	14.580	173.090	7365.28	-64.00	191.79	711.76	40°02'37.041"N	104°55'29.326"W	11.63	
7473.00	17.250	175.090	7405.67	-52.52	180.33	712.92	40°02'36.928"N	104°55'29.311"W	6.49	
7516.00	19.430	175.660	7446.48	-39.05	166.85	714.01	40°02'36.795"N	104°55'29.297"W	5.09	
7559.00	21.830	174.700	7486.72	-23.97	151.75	715.29	40°02'36.646"N	104°55'29.281"W	5.64	
7601.00	26.090	172.920	7525.09	-6.96	134.81	717.15	40°02'36.478"N	104°55'29.257"W	10.29	
7644.00	29.750	173.710	7563.08	13.14	114.81	719.49	40°02'36.280"N	104°55'29.227"W	8.55	
7687.00	34.580	174.780	7599.47	35.95	92.04	721.77	40°02'36.055"N	104°55'29.198"W	11.31	
7729.00	38.690	175.280	7633.17	60.91	67.08	723.93	40°02'35.809"N	104°55'29.170"W	9.81	
7772.00	43.130	177.480	7665.66	88.88	38.98	725.69	40°02'35.531"N	104°55'29.147"W	10.85	
7815.00	46.220	179.870	7696.23	118.74	8.77	726.37	40°02'35.233"N	104°55'29.139"W	8.18	
7857.00	49.180	180.130	7724.50	149.32	-22.29	726.37	40°02'34.926"N	104°55'29.139"W	7.06	
7900.00	53.670	180.850	7751.30	182.36	-55.90	726.07	40°02'34.593"N	104°55'29.142"W	10.52	
7942.00	58.520	182.140	7774.72	216.49	-90.74	725.15	40°02'34.249"N	104°55'29.154"W	11.83	



Actual Wellpath Report

JELTS 39C-19HZ AWP

Page 4 of 7



REFERENCE WELLPATH IDENTIFICATION

Operator	KERR-MCGEE OIL & GAS ONSHORE LP	Slot	SLOT#20 JELTS 39C-19HZ (275'FNL & 908'FEL, SEC.19)
Area	COLORADO	Well	JELTS 39C-19HZ
Field	WELD COUNTY (KERR MCGEE)	Wellbore	JELTS 39C-19HZ AWP
Facility	SEC.19-T1N-R67W		

WELLPATH DATA (147 stations) † = interpolated/extrapolated station

MD [ft]	Inclination [°]	Azimuth [°]	TVD [ft]	Vert Sect [ft]	North [ft]	East [ft]	Latitude	Longitude	DLS [°/100ft]	Comments
7985.00	63.640	182.200	7795.51	253.26	-128.33	723.73	40°02'33.878"N	104°55'29.173"W	11.91	
8028.00	68.180	181.660	7813.06	291.64	-167.56	722.41	40°02'33.490"N	104°55'29.190"W	10.62	
8070.00	72.200	181.810	7827.29	330.31	-207.04	721.21	40°02'33.100"N	104°55'29.205"W	9.58	
8113.00	75.300	181.210	7839.32	370.74	-248.31	720.13	40°02'32.692"N	104°55'29.219"W	7.33	
8155.00	79.300	181.430	7848.55	410.89	-289.26	719.18	40°02'32.287"N	104°55'29.231"W	9.54	
8201.00	83.010	182.230	7855.62	455.36	-334.68	717.73	40°02'31.838"N	104°55'29.250"W	8.25	
8250.00†	85.613	182.151	7860.48	502.99	-383.40	715.87	40°02'31.357"N	104°55'29.274"W	5.32	7" CASING POINT
8300.00	88.270	182.070	7863.15	551.79	-433.29	714.03	40°02'30.864"N	104°55'29.297"W	5.32	
8385.00	89.350	183.000	7864.91	634.71	-518.19	710.27	40°02'30.025"N	104°55'29.346"W	1.68	
8470.00	90.490	183.260	7865.03	717.45	-603.06	705.63	40°02'29.186"N	104°55'29.405"W	1.38	
8556.00	91.660	183.930	7863.42	800.99	-688.87	700.24	40°02'28.338"N	104°55'29.475"W	1.57	
8641.00	91.780	182.090	7860.87	883.73	-773.71	695.77	40°02'27.500"N	104°55'29.532"W	2.17	
8726.00	91.540	181.930	7858.40	966.81	-858.63	692.79	40°02'26.661"N	104°55'29.571"W	0.34	
8811.00	90.550	180.690	7856.85	1050.11	-943.59	690.85	40°02'25.821"N	104°55'29.596"W	1.87	
8896.00	90.270	179.440	7856.25	1133.77	-1028.58	690.76	40°02'24.981"N	104°55'29.597"W	1.51	
8982.00	90.030	179.170	7856.02	1218.62	-1114.58	691.80	40°02'24.131"N	104°55'29.583"W	0.42	
9067.00	89.840	179.040	7856.12	1302.52	-1199.56	693.13	40°02'23.292"N	104°55'29.566"W	0.27	
9152.00	89.320	177.950	7856.74	1386.56	-1284.53	695.36	40°02'22.452"N	104°55'29.538"W	1.42	
9237.00	88.700	177.240	7858.21	1470.79	-1369.44	698.92	40°02'21.613"N	104°55'29.492"W	1.11	
9322.00	89.100	177.590	7859.84	1555.04	-1454.34	702.76	40°02'20.774"N	104°55'29.443"W	0.63	
9408.00	89.160	176.410	7861.15	1640.37	-1540.21	707.26	40°02'19.925"N	104°55'29.385"W	1.37	
9493.00	89.260	176.000	7862.32	1724.85	-1625.02	712.88	40°02'19.087"N	104°55'29.313"W	0.50	
9578.00	90.000	176.610	7862.87	1809.31	-1709.84	718.36	40°02'18.249"N	104°55'29.242"W	1.13	
9663.00	89.780	176.680	7863.03	1893.73	-1794.69	723.34	40°02'17.410"N	104°55'29.178"W	0.27	
9749.00	89.780	178.140	7863.36	1978.98	-1880.60	727.22	40°02'16.561"N	104°55'29.128"W	1.70	
9834.00	89.590	178.320	7863.83	2063.09	-1965.56	729.85	40°02'15.722"N	104°55'29.095"W	0.31	
9919.00	89.100	177.150	7864.80	2147.29	-2050.49	733.21	40°02'14.882"N	104°55'29.051"W	1.49	
10004.00	88.760	177.320	7866.39	2231.58	-2135.37	737.31	40°02'14.044"N	104°55'28.999"W	0.45	
10089.00	89.070	177.030	7868.00	2315.88	-2220.25	741.49	40°02'13.205"N	104°55'28.945"W	0.50	
10175.00	88.920	177.300	7869.51	2401.17	-2306.13	745.75	40°02'12.356"N	104°55'28.890"W	0.36	
10260.00	89.350	178.970	7870.79	2485.28	-2391.08	748.51	40°02'11.517"N	104°55'28.855"W	2.03	
10345.00	89.630	179.070	7871.55	2569.21	-2476.06	749.97	40°02'10.677"N	104°55'28.836"W	0.35	
10430.00	89.070	179.480	7872.51	2653.06	-2561.05	751.04	40°02'09.837"N	104°55'28.822"W	0.82	
10515.00	89.440	178.590	7873.61	2736.98	-2646.03	752.47	40°02'08.997"N	104°55'28.804"W	1.13	
10600.00	89.530	178.120	7874.38	2821.05	-2730.99	754.91	40°02'08.158"N	104°55'28.773"W	0.56	
10686.00	89.660	178.360	7874.99	2906.14	-2816.95	757.55	40°02'07.308"N	104°55'28.739"W	0.32	
10771.00	89.840	177.530	7875.36	2990.30	-2901.89	760.60	40°02'06.469"N	104°55'28.700"W	1.00	
10856.00	88.640	179.230	7876.48	3074.36	-2986.84	763.01	40°02'05.629"N	104°55'28.669"W	2.45	
10942.00	89.040	178.800	7878.23	3159.26	-3072.81	764.48	40°02'04.780"N	104°55'28.650"W	0.68	
11027.00	89.690	178.590	7879.17	3243.25	-3157.78	766.42	40°02'03.940"N	104°55'28.625"W	0.80	
11113.00	89.750	179.540	7879.59	3328.15	-3243.77	767.82	40°02'03.090"N	104°55'28.607"W	1.11	
11198.00	88.760	180.190	7880.69	3411.86	-3328.76	768.02	40°02'02.250"N	104°55'28.604"W	1.39	
11283.00	87.380	180.050	7883.56	3495.46	-3413.71	767.84	40°02'01.411"N	104°55'28.607"W	1.63	
11369.00	87.500	179.620	7887.40	3580.09	-3499.63	768.09	40°02'00.562"N	104°55'28.603"W	0.52	
11454.00	87.410	179.500	7891.17	3663.80	-3584.54	768.74	40°01'59.723"N	104°55'28.595"W	0.18	



Actual Wellpath Report

JELTS 39C-19HZ AWP

Page 5 of 7



REFERENCE WELLPATH IDENTIFICATION

Operator	KERR-MCGEE OIL & GAS ONSHORE LP	Slot	SLOT#20 JELTS 39C-19HZ (275'FNL & 908'FEL, SEC.19)
Area	COLORADO	Well	JELTS 39C-19HZ
Field	WELD COUNTY (KERR MCGEE)	Wellbore	JELTS 39C-19HZ AWB
Facility	SEC.19-T1N-R67W		

WELLPATH DATA (147 stations)

MD [ft]	Inclination [°]	Azimuth [°]	TVD [ft]	Vert Sect [ft]	North [ft]	East [ft]	Latitude	Longitude	DLS [°/100ft]	Comments
11539.00	87.780	179.680	7894.74	3747.51	-3669.46	769.35	40°01'58.883"N	104°55'28.587"W	0.48	
11625.00	88.480	178.980	7897.54	3832.31	-3755.41	770.36	40°01'58.034"N	104°55'28.574"W	1.15	
11710.00	88.890	178.160	7899.50	3916.31	-3840.36	772.48	40°01'57.194"N	104°55'28.547"W	1.08	
11795.00	89.780	179.220	7900.48	4000.31	-3925.33	774.42	40°01'56.355"N	104°55'28.522"W	1.63	
11880.00	90.060	178.660	7900.60	4084.25	-4010.31	775.99	40°01'55.515"N	104°55'28.502"W	0.74	
11966.00	89.930	177.860	7900.61	4169.34	-4096.27	778.60	40°01'54.665"N	104°55'28.469"W	0.94	
12051.00	90.180	177.080	7900.53	4253.59	-4181.19	782.36	40°01'53.826"N	104°55'28.420"W	0.96	
12136.00	89.320	175.780	7900.90	4338.04	-4266.02	787.65	40°01'52.988"N	104°55'28.352"W	1.83	
12221.00	88.360	175.510	7902.62	4422.59	-4350.76	794.10	40°01'52.151"N	104°55'28.269"W	1.17	
12307.00	88.550	176.350	7904.94	4508.09	-4436.51	800.20	40°01'51.303"N	104°55'28.191"W	1.00	
12341.00	88.520	175.960	7905.81	4541.87	-4470.42	802.48	40°01'50.968"N	104°55'28.162"W	1.15	LAST BHI MWD+IFR SURVEY
12399.00	88.520	175.960	7907.30	4599.53	-4528.26	806.57	40°01'50.396"N	104°55'28.109"W	0.00	PROJECTION TO BIT

HOLE & CASING SECTIONS - Ref Wellbore: JELTS 39C-19HZ AWB Ref Wellpath: JELTS 39C-19HZ AWP

String/Diameter	Start MD [ft]	End MD [ft]	Interval [ft]	Start TVD [ft]	End TVD [ft]	Start N/S [ft]	Start E/W [ft]	End N/S [ft]	End E/W [ft]
13.5in Open Hole	16.00	938.00	922.00	16.00	937.77	0.00	0.00	-16.63	6.26
9.625in Casing Surface	16.00	938.00	922.00	16.00	937.77	0.00	0.00	-16.63	6.26
8.75in Open Hole	938.00	8260.00	7322.00	937.77	7861.20	-16.63	6.26	-393.37	715.49
7in Casing Intermediate	16.00	8250.00	8234.00	16.00	7860.48	0.00	0.00	-383.40	715.87
6.125in Open Hole	8260.00	12399.00	4139.00	7861.20	7907.30	-393.37	715.49	-4528.26	806.57



Actual Wellpath Report

JELTS 39C-19HZ AWP

Page 6 of 7



REFERENCE WELLPATH IDENTIFICATION

Operator	KERR-MCGEE OIL & GAS ONSHORE LP	Slot	SLOT#20 JELTS 39C-19HZ (275'FNL & 908'FEL, SEC.19)
Area	COLORADO	Well	JELTS 39C-19HZ
Field	WELD COUNTY (KERR MCGEE)	Wellbore	JELTS 39C-19HZ AWB
Facility	SEC.19-T1N-R67W		

TARGETS

Name	MD [ft]	TVD [ft]	North [ft]	East [ft]	Grid East [US ft]	Grid North [US ft]	Latitude	Longitude	Shape
SECTION 19 LINES		41.00	-25.72	-3032.58	3157293.83	1259018.03	40°02'34.890"N	104°56'17.470"W	polygon
JELTS 39C-19HZ BHL ON PLAT REV-1 (460'FSL & 210'FEL, SEC.19)		7917.00	-4553.60	779.91	3161135.32	1254515.03	40°01'50.146"N	104°55'28.452"W	point
JELTS 39C-19HZ LAND BOX		8041.00	0.00	0.00	3160326.06	1259063.33	40°02'35.146"N	104°55'38.478"W	polygon
SEC. 19 HARDLINES (460' SETBACKS)		8041.00	-25.72	-3032.58	3157293.83	1259018.03	40°02'34.890"N	104°56'17.470"W	polygon

WELLPATH COMPOSITION - Ref Wellbore: JELTS 39C-19HZ AWB Ref Wellpath: JELTS 39C-19HZ AWP

Start MD [ft]	End MD [ft]	Positional Uncertainty Model	Log Name/Comment	Wellbore
16.00	879.00	Generic gyro - continuous (Standard)	MS GYRO SURVEYS <116-879>	JELTS 39C-19HZ AWB
879.00	8201.00	NaviTrak (MAGCORR,IFR)	BHI MWD+IFR SURVEYS 8 3/4" HOLE <996-8201>	JELTS 39C-19HZ AWB
8201.00	12341.00	OnTrak (MAGCORR,IFR)	BHI MWD+IFR SURVEYS 6 1/8" HOLE <8300-12341>	JELTS 39C-19HZ AWB
12341.00	12399.00	Blind Drilling (std)	Projection to bit	JELTS 39C-19HZ AWB



Actual Wellpath Report

JELTS 39C-19HZ AWP

Page 7 of 7



REFERENCE WELLPATH IDENTIFICATION

Operator	KERR-MCGEE OIL & GAS ONSHORE LP	Slot	SLOT#20 JELTS 39C-19HZ (275'FNL & 908'FEL, SEC.19)
Area	COLORADO	Well	JELTS 39C-19HZ
Field	WELD COUNTY (KERR MCGEE)	Wellbore	JELTS 39C-19HZ AWB
Facility	SEC.19-T1N-R67W		

WELLPATH COMMENTS

MD [ft]	Inclination [°]	Azimuth [°]	TVD [ft]	Comment
16.00	0.000	105.060	16.00	TIE-ON
116.00	0.200	105.060	116.00	BEGIN GYRO SURVEYS
879.00	1.550	188.820	878.79	TIE-INTO GYRO SURVEYS
996.00	1.420	194.560	995.75	BEGIN BHI MWD+IFR SURVEYS
8250.00	85.613	182.151	7860.48	7" CASING POINT
12341.00	88.520	175.960	7905.81	LAST BHI MWD+IFR SURVEY
12399.00	88.520	175.960	7907.30	PROJECTION TO BIT