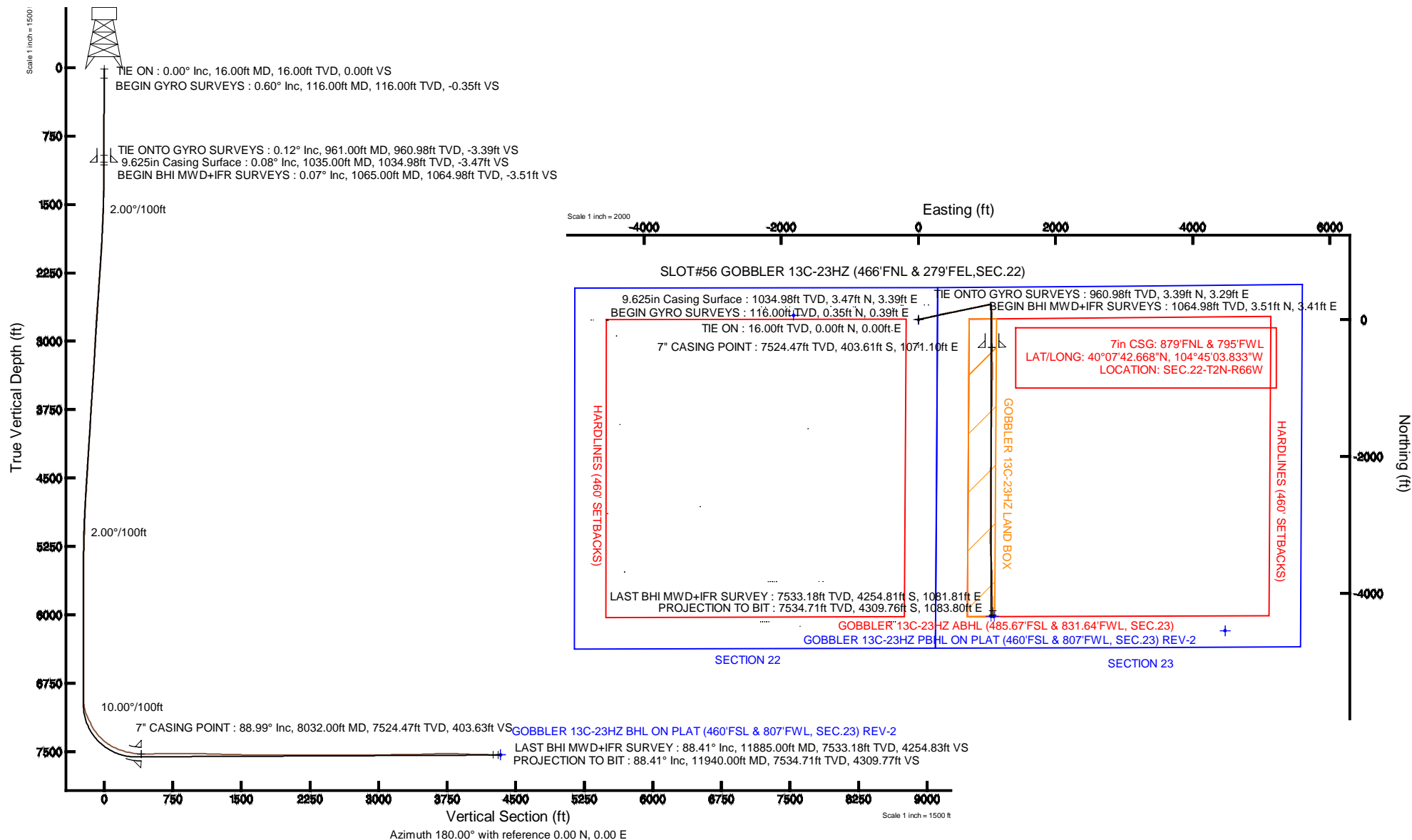


Location:	COLORADO	Slot:	SLOT#56 GOBBLER 13C-23HZ (466'FNL & 279'FEL,SEC.22)
Field:	WELD COUNTY (KERR MCGEE)	Well:	GOBBLER 13C-23HZ
Facility:	SEC.22-T2N-R66W	Wellbore:	GOBBLER 13C-23HZ PWB

Plot reference wellpath is GOBBLER 13C-234Z (REV-B.0) PWP	
True vertical depths are referenced to XTREME 20 (16' RKB) (RKB)	Grid System: NAD83 / Lambert Colorado SP, Northern Zone (501), US feet
Measured depths are referenced to XTREME 20 (16' RKB) (RKB)	North Reference: True north
XTREME 20 (16' RKB) (RKB) to Mean Sea Level: 5100 feet	Scale: True distance
Mean Sea Level to Mud line (At Slot: SLOT#56 GOBBLER 13C-234Z (466FNL & 279FEL,SEC.22): 0 feet	Depths are in feet
Coordinates are in feet referenced to Slot	Created by: robaleo01 on 18/Jul/2013





Actual Wellpath Report

GOBBLER 13C-23HZ AWP

Page 1 of 7



REFERENCE WELLPATH IDENTIFICATION

Operator	KERR-MCGEE OIL & GAS ONSHORE LP	Slot	SLOT#56 GOBBLER 13C-23HZ (466'FNL & 279'FEL,SEC.22)
Area	COLORADO	Well	GOBBLER 13C-23HZ
Field	WELD COUNTY (KERR MCGEE)	Wellbore	GOBBLER 13C-23HZ AWP
Facility	SEC.22-T2N-R66W		

REPORT SETUP INFORMATION

Projection System	NAD83 / Lambert Colorado SP, Northern Zone (501), US feet	Software System	WellArchitect® 4.0.0
North Reference	True	User	Robiale01
Scale	0.999959	Report Generated	18/Jul/2013 at 16:08
Convergence at slot	n/a	Database/Source file	WA_ANADARKO/GOBBLER_13C-23HZ_AWP.xml

WELLPATH LOCATION

	Local coordinates		Grid coordinates		Geographic coordinates	
	North[ft]	East[ft]	Easting[US ft]	Northing[US ft]	Latitude	Longitude
Slot Location	6.18	4544.04	3208344.62	1290942.21	40°07'46.657"N	104°45'17.622"W
Facility Reference Pt			3203800.98	1290898.68	40°07'46.600"N	104°46'16.122"W
Field Reference Pt			3197771.84	1268891.29	40°04'09.600"N	104°47'36.000"W

WELLPATH DATUM

Calculation method	Minimum curvature	XTREME 20 (16' RKB) (RKB) to Facility Vertical Datum	5100.00ft
Horizontal Reference Pt	Slot	XTREME 20 (16' RKB) (RKB) to Mean Sea Level	5100.00ft
Vertical Reference Pt	XTREME 20 (16' RKB) (RKB)	XTREME 20 (16' RKB) (RKB) to Mud Line at Slot (SLOT#56 GOBBLER 13C-23HZ (466'FNL & 279'FEL,SEC.22))	5100.00ft
MD Reference Pt	XTREME 20 (16' RKB) (RKB)	Section Origin	N 0.00, E 0.00 ft
Field Vertical Reference	Mean Sea Level	Section Azimuth	165.88°



Actual Wellpath Report

GOBBLER 13C-23HZ AWP

Page 2 of 7



REFERENCE WELLPATH IDENTIFICATION

Operator	KERR-MCGEE OIL & GAS ONSHORE LP	Slot	SLOT#56 GOBBLER 13C-23HZ (466'FNL & 279'FEL,SEC.22)
Area	COLORADO	Well	GOBBLER 13C-23HZ
Field	WELD COUNTY (KERR MCGEE)	Wellbore	GOBBLER 13C-23HZ AWB
Facility	SEC.22-T2N-R66W		

WELLPATH DATA (154 stations) † = interpolated/extrapolated station

MD [ft]	Inclination [°]	Azimuth [°]	TVD [ft]	Vert Sect [ft]	North [ft]	East [ft]	Latitude	Longitude	DLS [°/100ft]	Comments
0.00†	0.000	47.790	0.00	0.00	0.00	0.00	40°07'46.657"N	104°45'17.622"W	0.00	
16.00	0.000	47.790	16.00	0.00	0.00	0.00	40°07'46.657"N	104°45'17.622"W	0.00	TIE ON
116.00	0.600	47.790	116.00	-0.25	0.35	0.39	40°07'46.660"N	104°45'17.617"W	0.60	BEGIN GYRO SURVEYS
216.00	0.450	18.440	215.99	-0.82	1.08	0.90	40°07'46.668"N	104°45'17.610"W	0.30	
316.00	0.310	61.170	315.99	-1.22	1.58	1.26	40°07'46.673"N	104°45'17.606"W	0.31	
416.00	0.420	60.020	415.99	-1.39	1.89	1.82	40°07'46.676"N	104°45'17.599"W	0.11	
516.00	0.310	74.000	515.99	-1.50	2.15	2.39	40°07'46.678"N	104°45'17.591"W	0.14	
616.00	0.270	66.200	615.99	-1.55	2.32	2.87	40°07'46.680"N	104°45'17.585"W	0.06	
716.00	0.170	16.490	715.99	-1.72	2.56	3.13	40°07'46.682"N	104°45'17.582"W	0.21	
816.00	0.210	11.680	815.99	-2.01	2.88	3.21	40°07'46.685"N	104°45'17.581"W	0.04	
916.00	0.240	1.650	915.98	-2.38	3.27	3.25	40°07'46.689"N	104°45'17.580"W	0.05	
961.00	0.120	54.370	960.98	-2.48	3.39	3.29	40°07'46.690"N	104°45'17.580"W	0.43	TIE ONTO GYRO SURVEYS
1065.00	0.070	32.630	1064.98	-2.57	3.51	3.41	40°07'46.692"N	104°45'17.578"W	0.06	BEGIN BHI MWD+IFR SURVEYS
1159.00	1.620	80.600	1158.97	-2.50	3.77	4.75	40°07'46.694"N	104°45'17.561"W	1.67	
1251.00	3.360	71.480	1250.88	-2.60	4.84	8.59	40°07'46.705"N	104°45'17.511"W	1.93	
1343.00	5.310	74.450	1342.61	-2.91	6.84	15.25	40°07'46.725"N	104°45'17.426"W	2.13	
1433.00	6.680	75.830	1432.12	-3.02	9.24	24.34	40°07'46.748"N	104°45'17.309"W	1.53	
1524.00	7.760	79.190	1522.40	-2.67	11.68	35.51	40°07'46.772"N	104°45'17.165"W	1.27	
1616.00	8.850	76.870	1613.43	-2.19	14.46	48.50	40°07'46.800"N	104°45'16.998"W	1.24	
1708.00	9.840	78.520	1704.21	-1.71	17.63	63.10	40°07'46.831"N	104°45'16.810"W	1.11	
1800.00	11.890	79.250	1794.56	-0.79	20.96	80.11	40°07'46.864"N	104°45'16.591"W	2.23	
1885.00	13.510	79.780	1877.47	0.40	24.36	98.49	40°07'46.898"N	104°45'16.354"W	1.91	
1970.00	14.680	79.000	1959.91	1.66	28.17	118.83	40°07'46.935"N	104°45'16.092"W	1.39	
2055.00	15.690	78.330	2041.94	2.73	32.55	140.66	40°07'46.979"N	104°45'15.811"W	1.21	
2140.00	16.270	75.940	2123.66	3.24	37.77	163.47	40°07'47.030"N	104°45'15.518"W	1.03	
2225.00	17.520	75.440	2204.99	3.15	43.88	187.40	40°07'47.091"N	104°45'15.209"W	1.48	
2310.00	17.410	77.340	2286.07	3.37	49.88	212.19	40°07'47.150"N	104°45'14.890"W	0.68	
2395.00	17.740	75.890	2367.10	3.70	55.83	237.16	40°07'47.209"N	104°45'14.569"W	0.64	
2480.00	17.430	75.410	2448.13	3.59	62.19	262.04	40°07'47.272"N	104°45'14.249"W	0.40	
2565.00	16.980	74.310	2529.33	3.15	68.76	286.31	40°07'47.336"N	104°45'13.936"W	0.65	
2650.00	17.280	75.360	2610.56	2.69	75.30	310.47	40°07'47.401"N	104°45'13.625"W	0.51	
2735.00	17.130	76.080	2691.75	2.62	81.50	334.84	40°07'47.462"N	104°45'13.311"W	0.31	
2820.00	16.540	77.230	2773.11	2.94	87.19	358.79	40°07'47.519"N	104°45'13.003"W	0.80	
2905.00	16.110	80.240	2854.69	4.12	91.86	382.21	40°07'47.565"N	104°45'12.701"W	1.12	
2990.00	16.240	80.530	2936.32	5.98	95.82	405.56	40°07'47.604"N	104°45'12.401"W	0.18	
3075.00	16.930	80.300	3017.78	7.90	99.86	429.48	40°07'47.644"N	104°45'12.093"W	0.82	
3159.00	18.230	81.350	3097.86	10.09	103.90	454.53	40°07'47.684"N	104°45'11.770"W	1.59	
3244.00	18.080	81.530	3178.63	12.65	107.84	480.72	40°07'47.723"N	104°45'11.433"W	0.19	
3329.00	17.310	80.500	3259.61	14.97	111.87	506.23	40°07'47.762"N	104°45'11.105"W	0.98	
3414.00	17.510	77.870	3340.71	16.43	116.64	531.21	40°07'47.810"N	104°45'10.783"W	0.96	
3499.00	17.740	77.640	3421.72	17.27	122.10	556.36	40°07'47.864"N	104°45'10.459"W	0.28	
3584.00	17.460	78.130	3502.74	18.17	127.50	581.49	40°07'47.917"N	104°45'10.136"W	0.37	
3669.00	17.840	76.750	3583.74	18.86	133.10	606.64	40°07'47.972"N	104°45'09.812"W	0.66	
3754.00	17.420	78.140	3664.75	19.56	138.70	631.77	40°07'48.028"N	104°45'09.489"W	0.70	
3839.00	16.940	79.700	3745.96	20.89	143.53	656.40	40°07'48.075"N	104°45'09.171"W	0.78	



Actual Wellpath Report

GOBBLER 13C-23HZ AWP

Page 3 of 7



REFERENCE WELLPATH IDENTIFICATION			
Operator	KERR-MCGEE OIL & GAS ONSHORE LP	Slot	SLOT#56 GOBBLER 13C-23HZ (466'FNL & 279'FEL,SEC.22)
Area	COLORADO	Well	GOBBLER 13C-23HZ
Field	WELD COUNTY (KERR MCGEE)	Wellbore	GOBBLER 13C-23HZ AWP
Facility	SEC.22-T2N-R66W		

WELLPATH DATA (154 stations)										
MD [ft]	Inclination [°]	Azimuth [°]	TVD [ft]	Vert Sect [ft]	North [ft]	East [ft]	Latitude	Longitude	DLS [°/100ft]	Comments
3924.00	17.190	80.020	3827.22	22.62	147.92	680.96	40°07'48.119"N	104°45'08.855"W	0.31	
4009.00	17.540	81.560	3908.34	24.79	151.98	706.00	40°07'48.159"N	104°45'08.533"W	0.68	
4094.00	17.730	77.250	3989.35	26.36	156.72	731.29	40°07'48.206"N	104°45'08.207"W	1.55	
4179.00	16.620	76.220	4070.56	26.74	162.47	755.72	40°07'48.262"N	104°45'07.893"W	1.35	
4264.00	17.270	77.730	4151.87	27.22	168.05	779.86	40°07'48.318"N	104°45'07.582"W	0.92	
4349.00	18.290	80.390	4232.81	28.68	172.95	805.34	40°07'48.366"N	104°45'07.254"W	1.53	
4434.00	18.110	80.340	4313.56	30.75	177.40	831.51	40°07'48.410"N	104°45'06.917"W	0.21	
4519.00	17.950	80.180	4394.38	32.76	181.85	857.44	40°07'48.454"N	104°45'06.583"W	0.20	
4603.00	17.070	78.930	4474.49	34.38	186.42	882.29	40°07'48.499"N	104°45'06.263"W	1.14	
4688.00	15.230	76.300	4556.13	35.13	191.46	905.39	40°07'48.549"N	104°45'05.966"W	2.33	
4773.00	14.590	75.180	4638.27	35.08	196.85	926.58	40°07'48.602"N	104°45'05.693"W	0.83	
4858.00	13.890	74.980	4720.66	34.78	202.23	946.79	40°07'48.655"N	104°45'05.433"W	0.83	
4943.00	12.650	79.700	4803.39	35.24	206.54	965.80	40°07'48.698"N	104°45'05.188"W	1.94	
5028.00	11.640	79.630	4886.49	36.42	209.74	983.39	40°07'48.730"N	104°45'04.962"W	1.19	
5113.00	10.720	80.580	4969.87	37.63	212.58	999.63	40°07'48.758"N	104°45'04.753"W	1.10	
5198.00	8.760	79.810	5053.65	38.72	215.02	1013.80	40°07'48.782"N	104°45'04.570"W	2.31	
5283.00	8.300	79.000	5137.70	39.50	217.34	1026.19	40°07'48.805"N	104°45'04.411"W	0.56	
5368.00	6.940	75.260	5221.95	39.77	219.81	1037.18	40°07'48.829"N	104°45'04.269"W	1.70	
5453.00	5.500	80.010	5306.45	40.01	221.83	1046.16	40°07'48.849"N	104°45'04.154"W	1.80	
5538.00	4.380	80.540	5391.13	40.57	223.07	1053.37	40°07'48.861"N	104°45'04.061"W	1.32	
5623.00	3.130	77.430	5475.95	40.89	224.11	1058.84	40°07'48.871"N	104°45'03.990"W	1.49	
5708.00	1.690	109.240	5560.88	41.64	224.20	1062.29	40°07'48.872"N	104°45'03.946"W	2.25	
5793.00	1.020	169.160	5645.85	43.09	223.04	1063.61	40°07'48.861"N	104°45'03.929"W	1.73	
5878.00	0.390	302.030	5730.85	43.64	222.45	1063.51	40°07'48.855"N	104°45'03.930"W	1.55	
5963.00	0.620	303.670	5815.85	43.09	222.86	1062.88	40°07'48.859"N	104°45'03.938"W	0.27	
6048.00	1.000	321.260	5900.84	42.07	223.69	1062.03	40°07'48.867"N	104°45'03.949"W	0.53	
6133.00	0.480	171.620	5985.84	41.75	223.92	1061.62	40°07'48.870"N	104°45'03.955"W	1.69	
6218.00	0.490	182.750	6070.83	42.45	223.21	1061.66	40°07'48.863"N	104°45'03.954"W	0.11	
6303.00	0.280	214.460	6155.83	42.94	222.67	1061.52	40°07'48.857"N	104°45'03.956"W	0.34	
6388.00	0.220	15.710	6240.83	42.93	222.66	1061.45	40°07'48.857"N	104°45'03.957"W	0.58	
6473.00	0.090	16.100	6325.83	42.74	222.88	1061.51	40°07'48.859"N	104°45'03.956"W	0.15	
6558.00	0.280	165.360	6410.83	42.89	222.74	1061.58	40°07'48.858"N	104°45'03.955"W	0.42	
6643.00	0.220	228.380	6495.83	43.17	222.43	1061.51	40°07'48.855"N	104°45'03.956"W	0.31	
6728.00	0.160	232.890	6580.83	43.29	222.25	1061.30	40°07'48.853"N	104°45'03.959"W	0.07	
6813.00	0.370	313.820	6665.83	43.10	222.37	1061.00	40°07'48.854"N	104°45'03.963"W	0.45	
6898.00	0.550	314.090	6750.83	42.52	222.84	1060.51	40°07'48.859"N	104°45'03.969"W	0.21	
6983.00	0.470	313.660	6835.82	41.88	223.37	1059.97	40°07'48.864"N	104°45'03.976"W	0.09	
7068.00	0.560	293.660	6920.82	41.33	223.78	1059.33	40°07'48.868"N	104°45'03.984"W	0.23	
7111.00	3.740	174.730	6963.79	42.59	222.46	1059.27	40°07'48.855"N	104°45'03.985"W	9.40	
7153.00	8.440	175.860	7005.54	46.98	218.02	1059.62	40°07'48.811"N	104°45'03.980"W	11.19	
7196.00	15.380	175.060	7047.59	55.73	209.18	1060.34	40°07'48.724"N	104°45'03.971"W	16.14	
7238.00	20.210	175.500	7087.57	68.39	196.39	1061.39	40°07'48.598"N	104°45'03.958"W	11.50	
7281.00	26.050	174.180	7127.09	85.07	179.58	1062.93	40°07'48.431"N	104°45'03.938"W	13.63	
7323.00	26.430	174.410	7164.77	103.44	161.10	1064.78	40°07'48.249"N	104°45'03.914"W	0.94	
7366.00	25.810	174.760	7203.37	122.15	142.26	1066.56	40°07'48.063"N	104°45'03.891"W	1.49	



Actual Wellpath Report

GOBBLER 13C-23HZ AWP

Page 4 of 7



REFERENCE WELLPATH IDENTIFICATION

Operator	KERR-MCGEE OIL & GAS ONSHORE LP	Slot	SLOT#56 GOBBLER 13C-23HZ (466'FNL & 279'FEL,SEC.22)
Area	COLORADO	Well	GOBBLER 13C-23HZ
Field	WELD COUNTY (KERR MCGEE)	Wellbore	GOBBLER 13C-23HZ AWP
Facility	SEC.22-T2N-R66W		

WELLPATH DATA (154 stations) † = interpolated/extrapolated station

MD [ft]	Inclination [°]	Azimuth [°]	TVD [ft]	Vert Sect [ft]	North [ft]	East [ft]	Latitude	Longitude	DLS [°/100ft]	Comments
7408.00	29.610	175.520	7240.55	141.42	122.80	1068.21	40°07'47.870"N	104°45'03.870"W	9.09	
7451.00	35.720	177.390	7276.73	164.22	99.65	1069.61	40°07'47.642"N	104°45'03.852"W	14.40	
7493.00	40.730	177.220	7309.72	189.68	73.70	1070.84	40°07'47.385"N	104°45'03.836"W	11.93	
7536.00	43.760	178.630	7341.55	217.95	44.81	1071.87	40°07'47.100"N	104°45'03.823"W	7.38	
7578.00	48.200	179.630	7370.73	247.34	14.62	1072.32	40°07'46.801"N	104°45'03.817"W	10.71	
7621.00	53.930	180.800	7397.74	279.73	-18.81	1072.18	40°07'46.471"N	104°45'03.819"W	13.49	
7663.00	57.730	180.790	7421.32	313.30	-53.55	1071.70	40°07'46.128"N	104°45'03.825"W	9.05	
7706.00	61.940	181.370	7442.93	349.17	-90.71	1070.99	40°07'45.760"N	104°45'03.834"W	9.86	
7748.00	66.070	181.120	7461.33	385.56	-128.44	1070.18	40°07'45.387"N	104°45'03.845"W	9.85	
7791.00	69.690	180.990	7477.52	424.00	-168.27	1069.44	40°07'44.994"N	104°45'03.854"W	8.42	
7834.00	73.260	179.900	7491.18	463.46	-209.03	1069.13	40°07'44.591"N	104°45'03.858"W	8.64	
7877.00	76.470	179.180	7502.41	503.79	-250.53	1069.47	40°07'44.181"N	104°45'03.854"W	7.64	
7919.00	78.270	179.740	7511.59	543.63	-291.51	1069.85	40°07'43.776"N	104°45'03.849"W	4.48	
7962.00	82.230	179.310	7518.87	584.80	-333.88	1070.20	40°07'43.357"N	104°45'03.844"W	9.26	
7984.00	83.940	179.460	7521.52	606.04	-355.72	1070.44	40°07'43.142"N	104°45'03.841"W	7.80	
8032.00†	88.995	178.965	7524.47	652.64	-403.61	1071.10	40°07'42.668"N	104°45'03.833"W	10.58	7" CASING POINT
8050.00	90.890	178.780	7524.49	670.18	-421.60	1071.45	40°07'42.490"N	104°45'03.828"W	10.58	
8083.00	91.100	179.510	7523.92	702.29	-454.59	1071.94	40°07'42.164"N	104°45'03.822"W	2.30	
8168.00	91.630	178.280	7521.89	785.09	-539.55	1073.58	40°07'41.325"N	104°45'03.801"W	1.58	
8253.00	91.480	179.330	7519.59	867.90	-624.50	1075.35	40°07'40.485"N	104°45'03.778"W	1.25	
8338.00	90.270	179.470	7518.29	950.54	-709.48	1076.24	40°07'39.646"N	104°45'03.767"W	1.43	
8423.00	89.690	180.430	7518.32	1032.99	-794.48	1076.32	40°07'38.806"N	104°45'03.766"W	1.32	
8508.00	90.370	181.130	7518.27	1115.13	-879.47	1075.16	40°07'37.966"N	104°45'03.781"W	1.15	
8593.00	89.000	180.140	7518.74	1197.33	-964.46	1074.22	40°07'37.126"N	104°45'03.793"W	1.99	
8678.00	88.980	180.770	7520.24	1279.58	-1049.45	1073.54	40°07'36.286"N	104°45'03.802"W	0.74	
8763.00	88.550	181.530	7522.07	1361.56	-1134.41	1071.84	40°07'35.446"N	104°45'03.824"W	1.03	
8848.00	88.000	181.470	7524.63	1443.38	-1219.34	1069.61	40°07'34.607"N	104°45'03.852"W	0.65	
8933.00	87.950	180.570	7527.63	1525.38	-1304.28	1068.10	40°07'33.768"N	104°45'03.872"W	1.06	
9018.00	89.050	181.690	7529.86	1607.36	-1389.23	1066.43	40°07'32.928"N	104°45'03.894"W	1.85	
9102.00	88.980	181.650	7531.30	1688.18	-1473.18	1063.98	40°07'32.099"N	104°45'03.925"W	0.10	
9187.00	88.490	180.980	7533.18	1770.10	-1558.13	1062.03	40°07'31.259"N	104°45'03.950"W	0.98	
9272.00	89.380	180.410	7534.76	1852.26	-1643.11	1061.00	40°07'30.419"N	104°45'03.964"W	1.24	
9357.00	90.710	180.110	7534.69	1934.59	-1728.11	1060.61	40°07'29.579"N	104°45'03.969"W	1.60	
9442.00	91.020	180.650	7533.41	2016.88	-1813.10	1060.05	40°07'28.740"N	104°45'03.976"W	0.73	
9527.00	90.370	180.620	7532.38	2099.07	-1898.09	1059.11	40°07'27.900"N	104°45'03.988"W	0.77	
9612.00	90.090	180.970	7532.04	2181.21	-1983.08	1057.93	40°07'27.060"N	104°45'04.003"W	0.53	
9697.00	89.820	180.700	7532.10	2263.33	-2068.07	1056.69	40°07'26.220"N	104°45'04.019"W	0.45	
9782.00	89.750	181.280	7532.42	2345.39	-2153.05	1055.22	40°07'25.380"N	104°45'04.038"W	0.69	
9866.00	89.530	181.650	7532.95	2426.30	-2237.02	1053.07	40°07'24.550"N	104°45'04.066"W	0.51	
9951.00	89.630	180.500	7533.57	2508.33	-2322.01	1051.48	40°07'23.710"N	104°45'04.087"W	1.36	
10036.00	88.950	180.110	7534.63	2590.64	-2407.00	1051.02	40°07'22.871"N	104°45'04.092"W	0.92	
10121.00	89.450	180.360	7535.81	2672.98	-2491.99	1050.68	40°07'22.031"N	104°45'04.097"W	0.66	
10206.00	89.880	179.960	7536.31	2755.36	-2576.99	1050.44	40°07'21.191"N	104°45'04.100"W	0.69	
10292.00	90.770	179.760	7535.82	2838.81	-2662.98	1050.65	40°07'20.341"N	104°45'04.097"W	1.06	
10377.00	90.400	179.260	7534.96	2921.41	-2747.98	1051.38	40°07'19.501"N	104°45'04.088"W	0.73	



Actual Wellpath Report

GOBBLER 13C-23HZ AWP

Page 5 of 7



REFERENCE WELLPATH IDENTIFICATION

Operator	KERR-MCGEE OIL & GAS ONSHORE LP	Slot	SLOT#56 GOBBLER 13C-23HZ (466'FNL & 279'FEL,SEC.22)
Area	COLORADO	Well	GOBBLER 13C-23HZ
Field	WELD COUNTY (KERR MCGEE)	Wellbore	GOBBLER 13C-23HZ AWB
Facility	SEC.22-T2N-R66W		

WELLPATH DATA (154 stations)

MD [ft]	Inclination [°]	Azimuth [°]	TVD [ft]	Vert Sect [ft]	North [ft]	East [ft]	Latitude	Longitude	DLS [°/100ft]	Comments
10461.00	90.710	180.400	7534.14	3002.93	-2831.97	1051.63	40°07'18.671"N	104°45'04.085"W	1.41	
10547.00	90.590	180.740	7533.17	3086.12	-2917.96	1050.77	40°07'17.821"N	104°45'04.096"W	0.42	
10632.00	90.060	180.680	7532.68	3168.28	-3002.95	1049.72	40°07'16.981"N	104°45'04.110"W	0.63	
10717.00	90.460	180.910	7532.30	3250.42	-3087.94	1048.54	40°07'16.141"N	104°45'04.125"W	0.54	
10802.00	91.050	179.920	7531.18	3332.69	-3172.93	1047.92	40°07'15.302"N	104°45'04.133"W	1.36	
10887.00	90.520	179.420	7530.01	3415.24	-3257.92	1048.41	40°07'14.462"N	104°45'04.127"W	0.86	
10971.00	90.650	178.210	7529.16	3497.10	-3341.90	1050.15	40°07'13.632"N	104°45'04.104"W	1.45	
11056.00	90.990	176.720	7527.94	3580.36	-3426.80	1053.91	40°07'12.793"N	104°45'04.056"W	1.80	
11141.00	92.180	175.680	7525.59	3663.95	-3511.58	1059.54	40°07'11.955"N	104°45'03.983"W	1.86	
11226.00	92.120	176.430	7522.40	3747.56	-3596.32	1065.38	40°07'11.118"N	104°45'03.908"W	0.88	
11311.00	91.100	178.130	7520.01	3830.84	-3681.19	1069.41	40°07'10.279"N	104°45'03.856"W	2.33	
11396.00	88.850	178.790	7520.05	3913.80	-3766.15	1071.70	40°07'09.439"N	104°45'03.827"W	2.76	
11481.00	89.070	179.810	7521.59	3996.46	-3851.13	1072.74	40°07'08.600"N	104°45'03.814"W	1.23	
11567.00	87.490	179.830	7524.17	4079.89	-3937.09	1073.01	40°07'07.750"N	104°45'03.810"W	1.84	
11652.00	87.750	177.980	7527.70	4162.63	-4021.99	1074.63	40°07'06.911"N	104°45'03.789"W	2.20	
11737.00	88.830	178.430	7530.24	4245.64	-4106.91	1077.29	40°07'06.072"N	104°45'03.755"W	1.38	
11822.00	89.070	178.280	7531.80	4328.62	-4191.86	1079.73	40°07'05.232"N	104°45'03.724"W	0.33	
11885.00	88.410	177.930	7533.18	4390.17	-4254.81	1081.81	40°07'04.610"N	104°45'03.697"W	1.19	LAST BHI MWD+IFR SURVEY
11940.00	88.410	177.930	7534.71	4443.94	-4309.76	1083.80	40°07'04.067"N	104°45'03.672"W	0.00	PROJECTION TO BIT

HOLE & CASING SECTIONS - Ref Wellbore: GOBBLER 13C-23HZ AWB Ref Wellpath: GOBBLER 13C-23HZ AWP

String/Diameter	Start MD [ft]	End MD [ft]	Interval [ft]	Start TVD [ft]	End TVD [ft]	Start N/S [ft]	Start E/W [ft]	End N/S [ft]	End E/W [ft]
13.5in Open Hole	16.00	1035.00	1019.00	16.00	1034.98	0.00	0.00	3.47	3.39
9.625in Casing Surface	16.00	1035.00	1019.00	16.00	1034.98	0.00	0.00	3.47	3.39
8.75in Open Hole	1035.00	8042.00	7007.00	1034.98	7524.56	3.47	3.39	-413.60	1071.29
7in Casing Intermediate	16.00	8032.00	8016.00	16.00	7524.47	0.00	0.00	-403.61	1071.10
6.125in Open Hole	8042.00	11940.00	3898.00	7524.56	7534.71	-413.60	1071.29	-4309.76	1083.80



Actual Wellpath Report

GOBBLER 13C-23HZ AWP

Page 6 of 7



REFERENCE WELLPATH IDENTIFICATION				
Operator	KERR-MCGEE OIL & GAS ONSHORE LP	Slot	SLOT#56 GOBBLER 13C-23HZ (466'FNL & 279'FEL,SEC.22)	
Area	COLORADO	Well	GOBBLER 13C-23HZ	
Field	WELD COUNTY (KERR MCGEE)	Wellbore	GOBBLER 13C-23HZ AWB	
Facility	SEC.22-T2N-R66W			

TARGETS									
Name	MD [ft]	TVD [ft]	North [ft]	East [ft]	Grid East [US ft]	Grid North [US ft]	Latitude	Longitude	Shape
GOBBLER 1N-23HZ1N-23HZ/1C-23HZ SECTION LINES		-3.00	-4544.88	4471.84	3212854.29	1286435.25	40°07'01.740"N	104°44'20.062"W	polygon
GOBBLER SECTION 22		30.00	65.66	-1820.97	3206523.24	1290992.56	40°07'47.305"N	104°45'41.065"W	polygon
GOBBLER 1N-23HZ/1C-23HZ HARDLINES (460' SETBACKS)		7233.00	-4544.88	4471.84	3212854.29	1286435.25	40°07'01.740"N	104°44'20.062"W	polygon
VICTOR USX #23-5		7378.00	-1679.90	709.40	3209068.07	1289268.40	40°07'30.056"N	104°45'08.490"W	circle
GOBBLER HARDLINES (460' SETBACKS)		7430.00	65.66	-1820.97	3206523.24	1290992.56	40°07'47.305"N	104°45'41.065"W	polygon
VICTOR #21-23		7484.47	153.16	2461.90	3210805.04	1291116.04	40°07'48.169"N	104°44'45.927"W	circle
GOBBLER 13C-23HZ BHL ON PLAT (460'FSL & 850'FWL, SEC.23) REV-1		7530.00	-4335.08	1101.95	3209482.90	1286616.72	40°07'03.817"N	104°45'03.438"W	point
GOBBLER 13C-23HZ BHL ON PLAT (460'FSL & 807'FWL, SEC.23) REV-2		7535.00	-4335.43	1059.16	3209440.12	1286616.02	40°07'03.814"N	104°45'03.989"W	point
VICTOR USX #23-6		7553.00	-1641.52	2016.35	3210374.60	1289317.76	40°07'30.435"N	104°44'51.665"W	circle
VICTOR USX #23-4		7558.00	-464.34	1268.55	3209616.97	1290488.56	40°07'42.068"N	104°45'01.291"W	circle
ARROWHEAD FARMS #31-23		7573.00	-420.07	3498.51	3211846.38	1290551.56	40°07'42.503"N	104°44'32.583"W	circle
ARROWHEAD FARMS #32-23		7582.00	-1382.66	3575.12	3211931.07	1289589.69	40°07'32.991"N	104°44'31.598"W	circle
GOBBLER 13C-23HZ LAND BOX		12200.50	0.00	0.00	3208344.62	1290942.21	40°07'46.657"N	104°45'17.622"W	polygon

WELLPATH COMPOSITION - Ref Wellbore: GOBBLER 13C-23HZ AWB Ref Wellpath: GOBBLER 13C-23HZ AWP				
Start MD [ft]	End MD [ft]	Positional Uncertainty Model	Log Name/Comment	Wellbore
16.00	961.00	Generic gyro - continuous (Standard)	ME ENERGY WIRELINE GYRO SURVEYS <116-961>	GOBBLER 13C-23HZ AWB
961.00	7984.00	NaviTrak (MAGCORR,IFR)	BHI NAVITRAK MWD+IFR 8.75" HOLE <1065-7984>	GOBBLER 13C-23HZ AWB
7984.00	11885.00	NaviTrak (MAGCORR,IFR)	BHI NAVITRAK MWD+IFR 6 1/8" HOLE <8050-11885>	GOBBLER 13C-23HZ AWB
11885.00	11940.00	Blind Drilling (std)	Projection to bit	GOBBLER 13C-23HZ AWB



Actual Wellpath Report

GOBBLER 13C-23HZ AWP

Page 7 of 7



REFERENCE WELLPATH IDENTIFICATION

Operator	KERR-MCGEE OIL & GAS ONSHORE LP	Slot	SLOT#56 GOBBLER 13C-23HZ (466'FNL & 279'FEL,SEC.22)
Area	COLORADO	Well	GOBBLER 13C-23HZ
Field	WELD COUNTY (KERR MCGEE)	Wellbore	GOBBLER 13C-23HZ AWB
Facility	SEC.22-T2N-R66W		

WELLPATH COMMENTS

MD [ft]	Inclination [°]	Azimuth [°]	TVD [ft]	Comment
16.00	0.000	47.790	16.00	TIE ON
116.00	0.600	47.790	116.00	BEGIN GYRO SURVEYS
961.00	0.120	54.370	960.98	TIE ONTO GYRO SURVEYS
1065.00	0.070	32.630	1064.98	BEGIN BHI MWD+IFR SURVEYS
8032.00	88.995	178.965	7524.47	7" CASING POINT
11885.00	88.410	177.930	7533.18	LAST BHI MWD+IFR SURVEY
11940.00	88.410	177.930	7534.71	PROJECTION TO BIT