

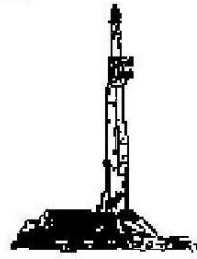
GOOLSBY BROTHERS and associates, inc.

575 Union Blvd, Suite 208
Lakewood, CO 80228
303-945-2860 Office



**Geological Wellsite
Supervision**

www.goolsbybrothers.com



**Scale 1:240 (5"=100') Imperial
True Vertical Depth Log**

Well Name: Gobbler 13C-23HZ (Vertical Hole Section)
Location: Section 22, T2N, R66W, Weld County, CO.
License Number: API: 05-123-36477 **Region:** Wattenberg, DJ Basin
Spud Date: July 2, 2013 **Drilling Completed:** July 11, 2013
Surface Coordinates: NENE Sec 22 T2N R66W; 466' FNL 279' FEL
Lat N 40.129627 Long W -104.754895
Bottom Hole Coordinates: SWSW Sec 23 T2N R66W; 505' FSL; 804' FWL
Ground Elevation (ft): 5085' **K.B. Elevation (ft):** 5102'
Logged Interval (ft): 7080' **To:** 11940' **Total Depth (ft):** 11940' DMTD
Formation: Pierre Sands/Shales, Niobrara, Codell Target
Type of Drilling Fluid: Water & Poly to 7080', LSND 7080'-11940'

Printed by STRIP.LOG from WellSight Systems 1-800-447-1534 www.WellSight.com

OPERATOR

Company: Kerr-McGee Oil & Gas Onshore LP
Address: Granite Tower - 1099 18th St, Ste 1800
Denver, CO 80202
CO Geologist, Tom Birmingham

GEOLOGIST

Name: Larry Goolsby, Ian Harris, & Andrew Krueger
Company: Goolsby Brothers & Assoc. (GBA), Inc. (www.goolsbybrothers.com)
Address: 575 Union Blvd.
Suite 208,
Lakewood CO. 80228

E-Logs

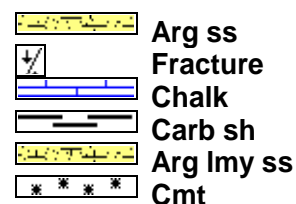
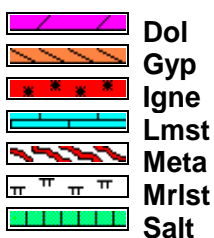
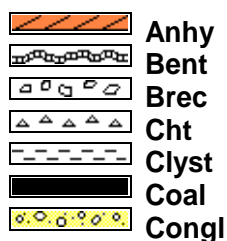
MWD GR 7080' - 11940'

Comments

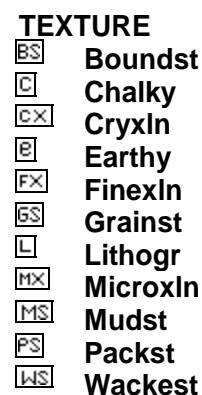
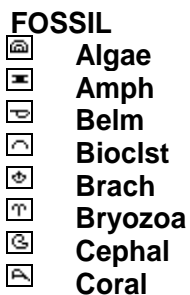
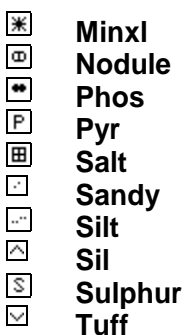
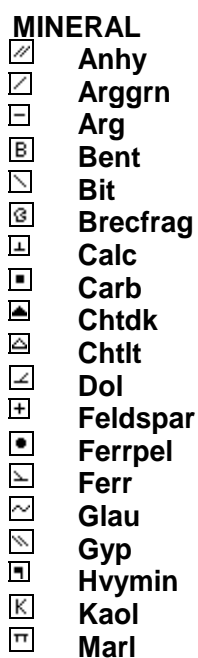
- 1) Drilling Contractor: Xtreme Drilling, Rig #20
Toolpusher: Shaun Cox
- 2) Company Man: James Adkins, Charlie Daigle
- 3) Mud Company : AES
Engineer: Ray Brewer
- 4) Directional Drilling: Baker Hughes
Pulse Tool
Drillers: Travis Wilcox & Scott Sanford
MWD: Adam Schlenz & Octave Parfait
- 5) Gas Equipment: Mudlogging Systems Inc.
by Terra Services
Redbox # ML-333 & Ratcliff Agitator
- 6) Wellsite Geology: Goolsby Brothers & Associates

Geologists: Larry Goolsby, Ian Harris, Andrew Krueger

ROCK TYPES



ACCESSORIES



OTHER SYMBOLS

POROSITY

- Earthy
- Fenest
- Fracture
- Inter
- Moldic
- Organic
- Pinpoint
- Vuggy

SORTING

- Well
- Moderate
- Poor

ROUNDING

- Rounded
- Subrnd
- Subang
- Angular

OIL SHOW

- Even
- Spotted
- Ques
- Dead

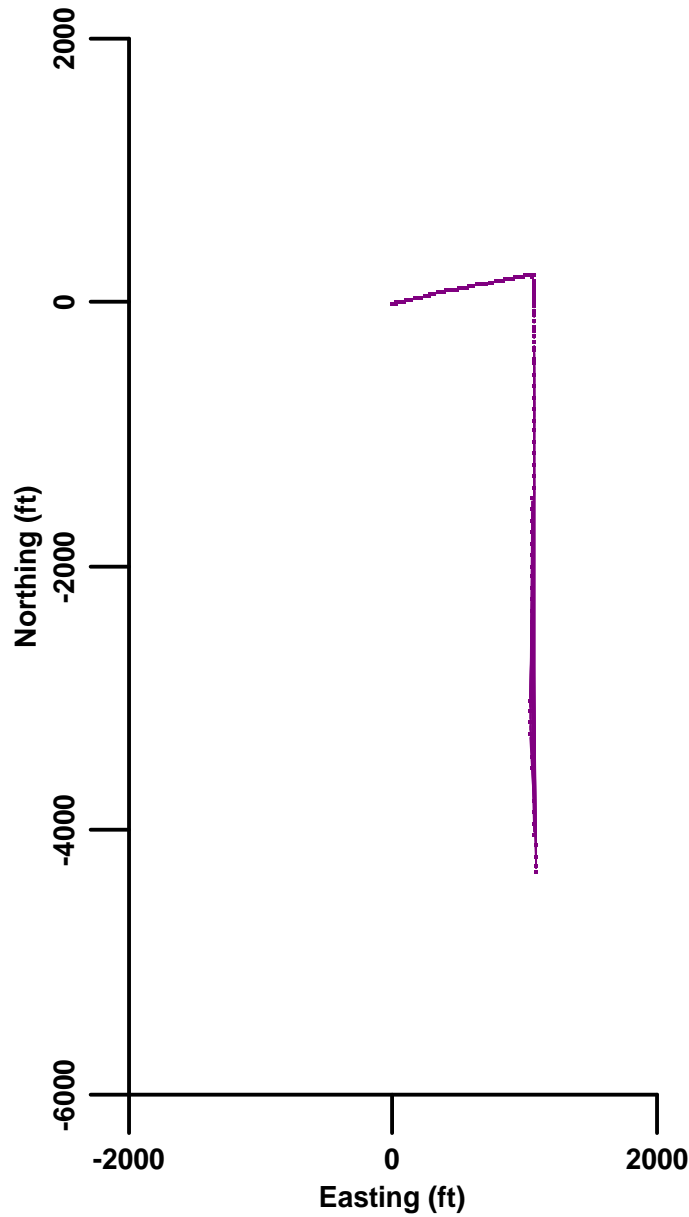
INTERVAL

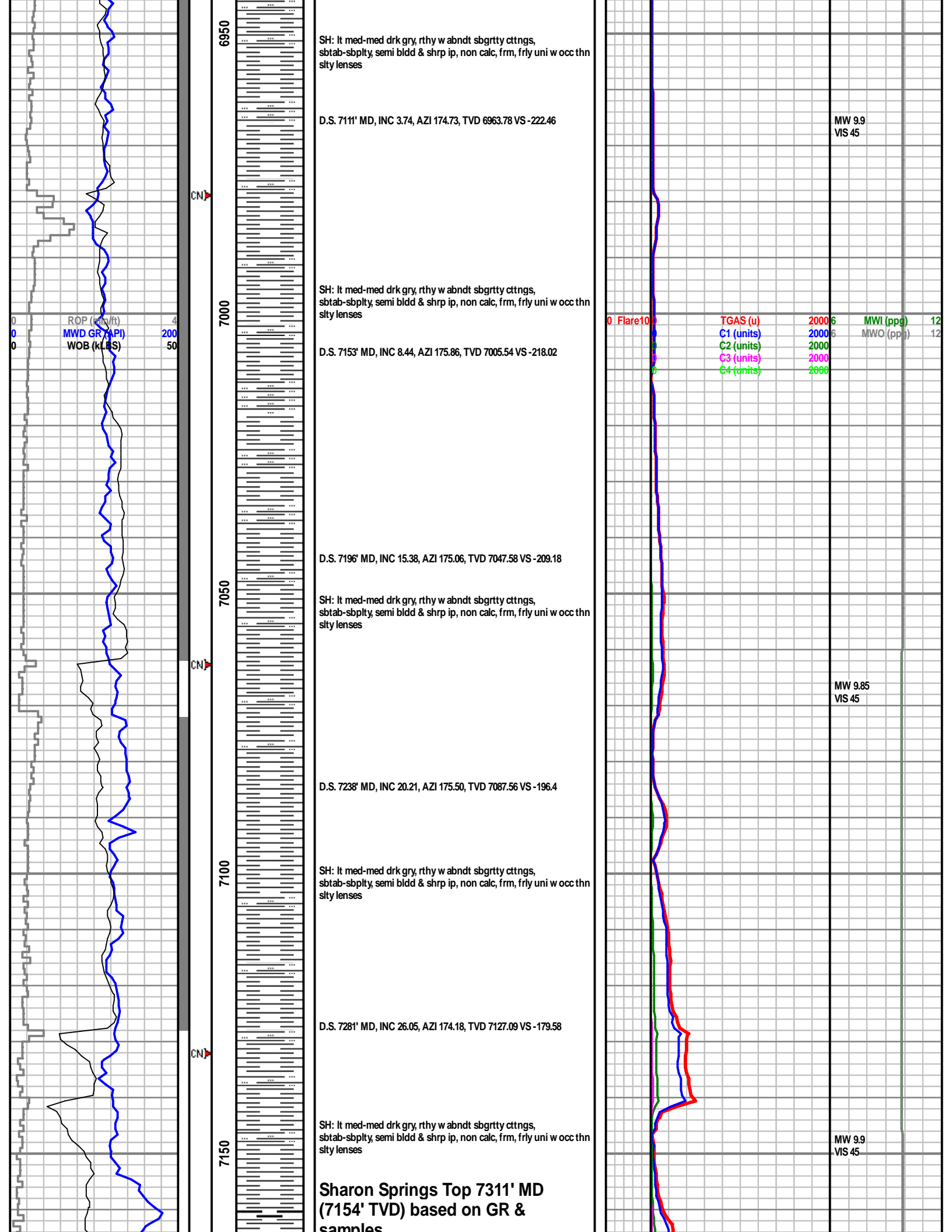
- Core
- Dst

EVENT

- New bit
- Rft
- Off btm
- Conn
- Casing
- Casing_right

Plan





SH: It med-med drk gry, rthy w abndt sbgrtty ctngs, sbtab-sbplty, semi bldd & shrp ip, non calc, frm, frly uni w occ thn slty lenses

D.S. 7111' MD, INC 3.74, AZI 174.73, TVD 6963.78 VS -222.46

MW 9.9
VIS 45

SH: It med-med drk gry, rthy w abndt sbgrtty ctngs, sbtab-sbplty, semi bldd & shrp ip, non calc, frm, frly uni w occ thn slty lenses

D.S. 7153' MD, INC 8.44, AZI 175.86, TVD 7005.54 VS -218.02

0 Flare1000
TGAS (u) 20006
C1 (units) 20006
C2 (units) 20006
C3 (units) 20006
C4 (units) 20006
MWI (ppg) 12
MWO (ppg) 12

D.S. 7196' MD, INC 15.38, AZI 175.06, TVD 7047.58 VS -209.18

SH: It med-med drk gry, rthy w abndt sbgrtty ctngs, sbtab-sbplty, semi bldd & shrp ip, non calc, frm, frly uni w occ thn slty lenses

MW 9.85
VIS 45

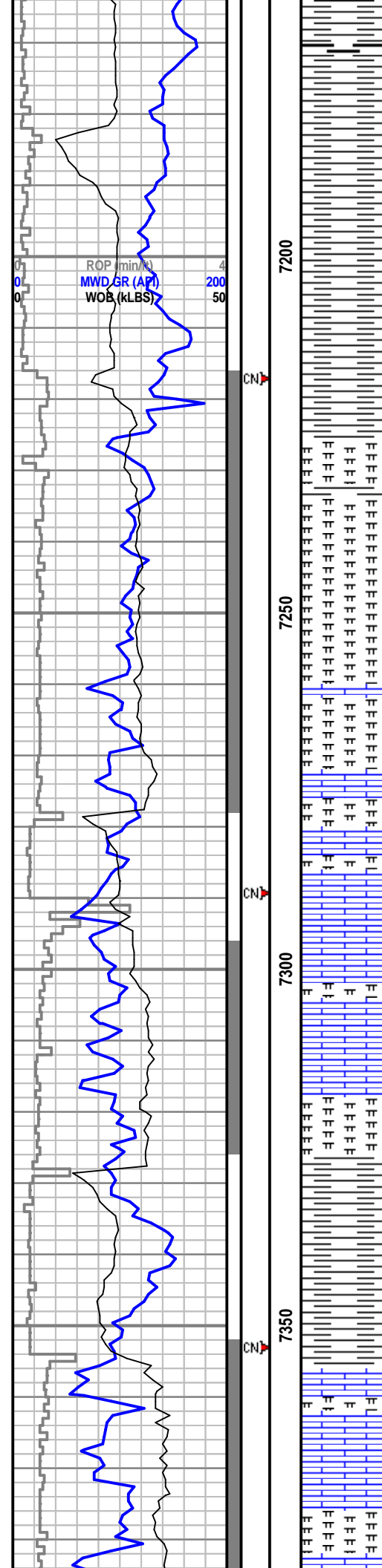
D.S. 7238' MD, INC 20.21, AZI 175.50, TVD 7087.56 VS -196.4

SH: It med-med drk gry, rthy w abndt sbgrtty ctngs, sbtab-sbplty, semi bldd & shrp ip, non calc, frm, frly uni w occ thn slty lenses

D.S. 7281' MD, INC 26.05, AZI 174.18, TVD 7127.09 VS -179.58

MW 9.9
VIS 45

Sharon Springs Top 7311' MD
(7154' TVD) based on GR &
samples



Samples
D.S. 7323' MD, INC 26.43, AZI 174.41, TVD 7164.76 VS -161.11

SH: drk gry-gryblk, dcrrng med gry, sbrthy-sbwxy, sm/slky feel, pred plty-sbblyk, hghly fiss thru, frm, non-v sl calc, w cmt

D.S. 7366' MD, INC 25.81, AZI 174.76, TVD 7203.37 VS -142.26

Niobrara A Top 7386' MD (7221' TVD) based on GR & samples

MRLSTN: drk gry-sl gry blk, sbrthy-sbwxy, plty-sb plnr tab thru, jggd, rr calct frac fil, no vis por or perm, infrrd frac por, no ini fl, pred wk cuts, shly ip.

D.S. 7408' MD, INC 29.61, AZI 175.52, TVD 7240.55 VS -122.8

Niobrara B Top 7428' MD (7258' TVD) based on GR & samples

MRLSTN: drk gry-sl gry blk, sbrthy-sbwxy, plty-sb plnr tab thru, jggd, rr calct frac fil, no vis por or perm, infrrd frac por, no ini fl, pred wk cuts, shly ip.

D.S. 7451' MD, INC 35.72, AZI 177.39, TVD 7276.73 VS -99.65

Niobrara B Chalk Top 7464' MD (7287' TVD) based on GR & samples

D.S. 7493' MD, INC 40.73, AZI 177.22, TVD 7309.71 VS -73.7

CARB CHLK(80%): lt med-med drk gry, hghly mttld w ltr crm mro spcks, chly-v rthy txt, sbblyk occ sbfiss ip, mstly frm, sl crmbly, no pri fluor, slw wk-mod wht cut fl w/occ strms, no vis cut, mod ylw resid rng fl, abndt MRLSTN(20%) thru.

Niobrara B Shale Top 7511' MD (7323' TVD) based on GR & samples

D.S. 7536' MD, INC 43.76, AZI 178.63, TVD 7341.54 VS -44.81

CARB SH(70%): med drk gry-gryblk ip, sbrthy-sl grtty & rgh, sbplty-plty, abndt jggd/shrp ctngs thru, frm-sl hd, pred non-wk calc, no vis por or perm, no ini fluor, wk mlky dul yel cuts, dim hzy ylw oily res. Strng petro odor. CHLK (20%). Marlstn(10%)

Niobrara C Chalk Top 7557' MD (7356' TVD) based on GR & samples

D.S. 7578' MD, INC 48.2, AZI 179.63, TVD 7370.72 VS -14.62

CARB CHALK (micrite): med-med drk gry, abndt ltr crvbrn.

