

09 September 2013

Colorado Oil and Gas Conservation  
Commission  
The Chancery Building  
1120 Lincoln Street, Suite 801  
Denver, CO 80203



410 17th Street, Suite 1400  
Denver, CO 80202  
(720) 440-6100 phone  
(720) 305-0804 fax

[BonanzaCrk.com](http://BonanzaCrk.com)

Attn: Matthew Lepore, Director

Re: Notice of 318A(I).a(4).D Well Proposal  
State North Platte P41-T44-26HNB  
SHL: NENE (818' FNL, 763' FEL) Sec 26-5N-63W, 6<sup>TH</sup> PM  
Top of Production: NENE (631' FNL, 1125' FEL) Sec 26-5N-63W, 6<sup>TH</sup> PM  
Bottom of Production: SESE (470' FSL, 1125' FEL) Sec 26-5N-63W, 6<sup>TH</sup> PM  
Weld County, Colorado

Mr. Director:

Bonanza Creek Energy, Inc. (Bonanza) intends to permit, drill and operate the referenced Niobrara Horizontal Well. As defined by Colorado Oil and Gas Conservation Commission (COGCC) Rule 318A(I).a.(4)D., Bonanza proposes the following wellbore spacing unit:

E/2 Section 26-T5N-R63W, 6<sup>TH</sup> PM, Weld County, CO – 320 Acres

Bonanza is the sole mineral lease holder in the proposed spacing unit, and no mineral owner notifications were required.

Bonanza respectfully requests that you review the enclosed wellbore spacing unit documentation and approve the referenced APD.

Please do not hesitate to call or email me, directly, at (720) 440-6112 or [KCaplan@BonanzaCRK.com](mailto:KCaplan@BonanzaCRK.com), should you have any questions pertaining to this matter.

Thank you for your cooperation.

Sincerely,

**BONANZA CREEK ENERGY, INC.**  
**BONANZA CREEK ENERGY OPERATING COMPANY, LLC.**

Keith S. Caplan  
Sr. Regulatory Specialist

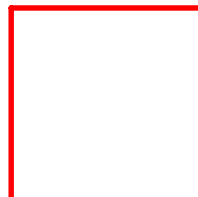
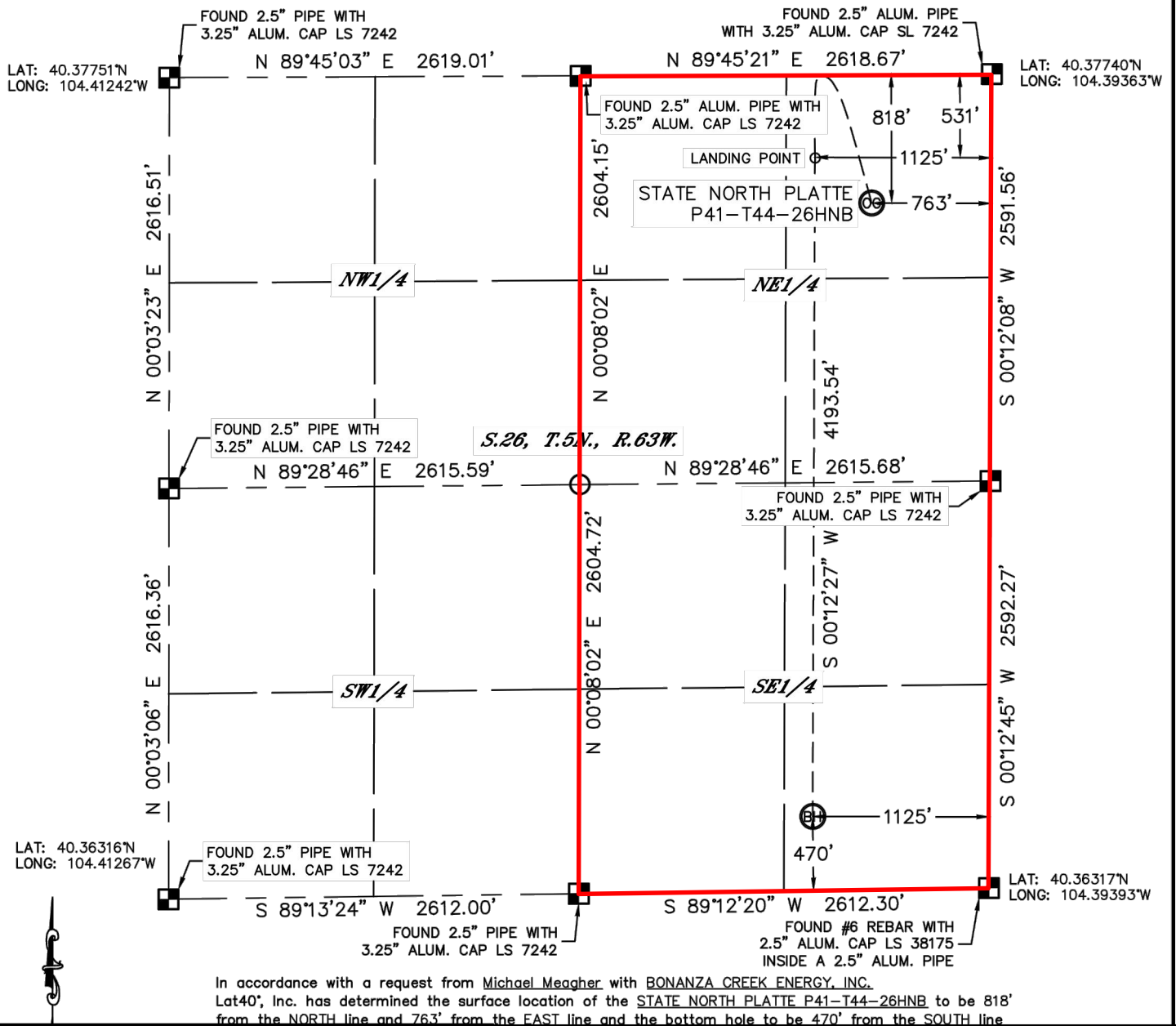


Lat40°, Inc. 1635 Foxtrail Drive, Suite 325 Loveland, CO 970-776-3321

## WELL LOCATION CERTIFICATE

THIS MAP DOES NOT REPRESENT A BOUNDARY SURVEY

SECTION: 26  
TOWNSHIP: 5N  
RANGE: 63W



Wellbore Spacing Unit Outline



### Wellbore Spacing Unit Map

09 September 2013 ksc

State North Platte P41-T44-26HNB  
E/2 Sec 26-T5N-R63W 6th PM  
Weld County, Colorado