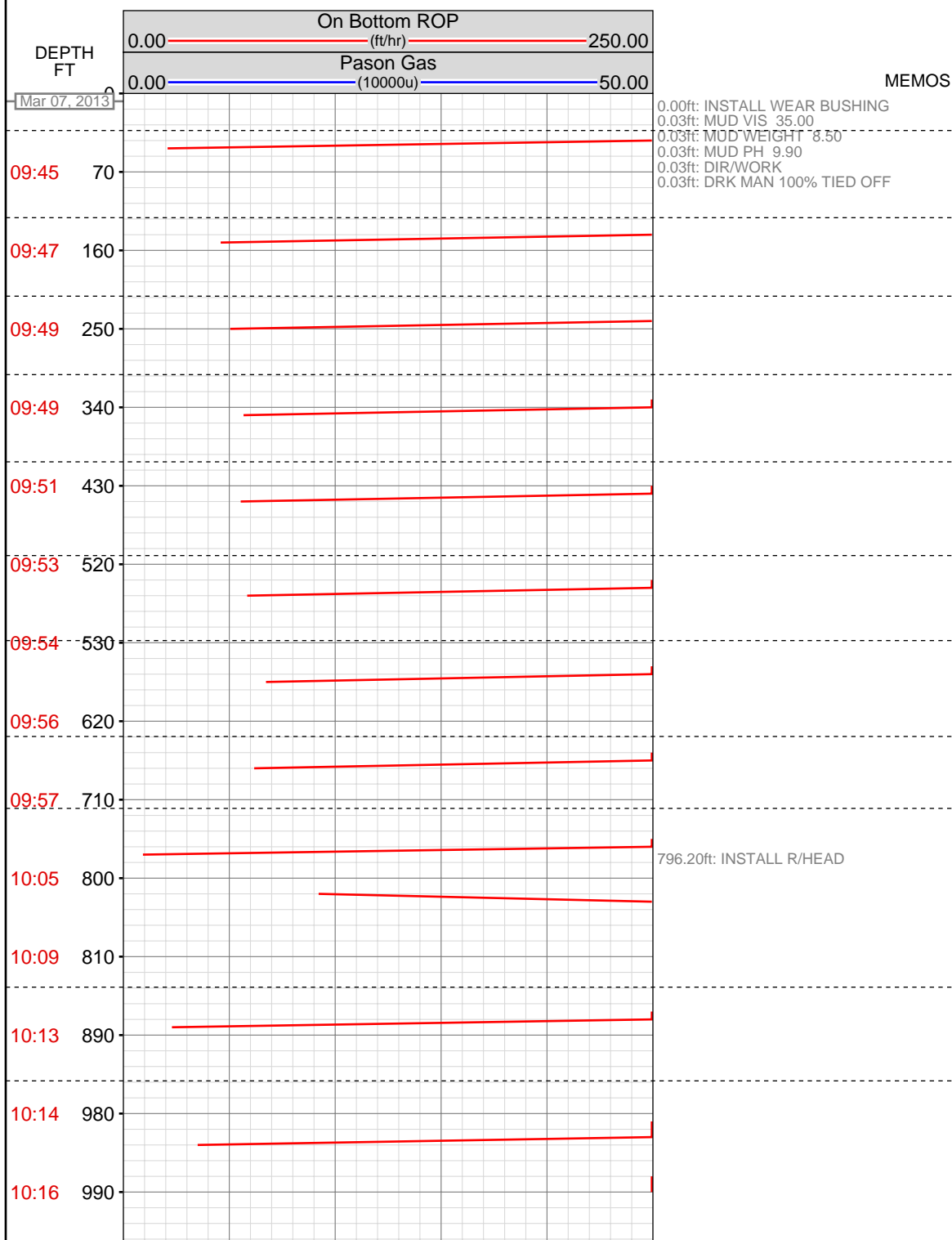


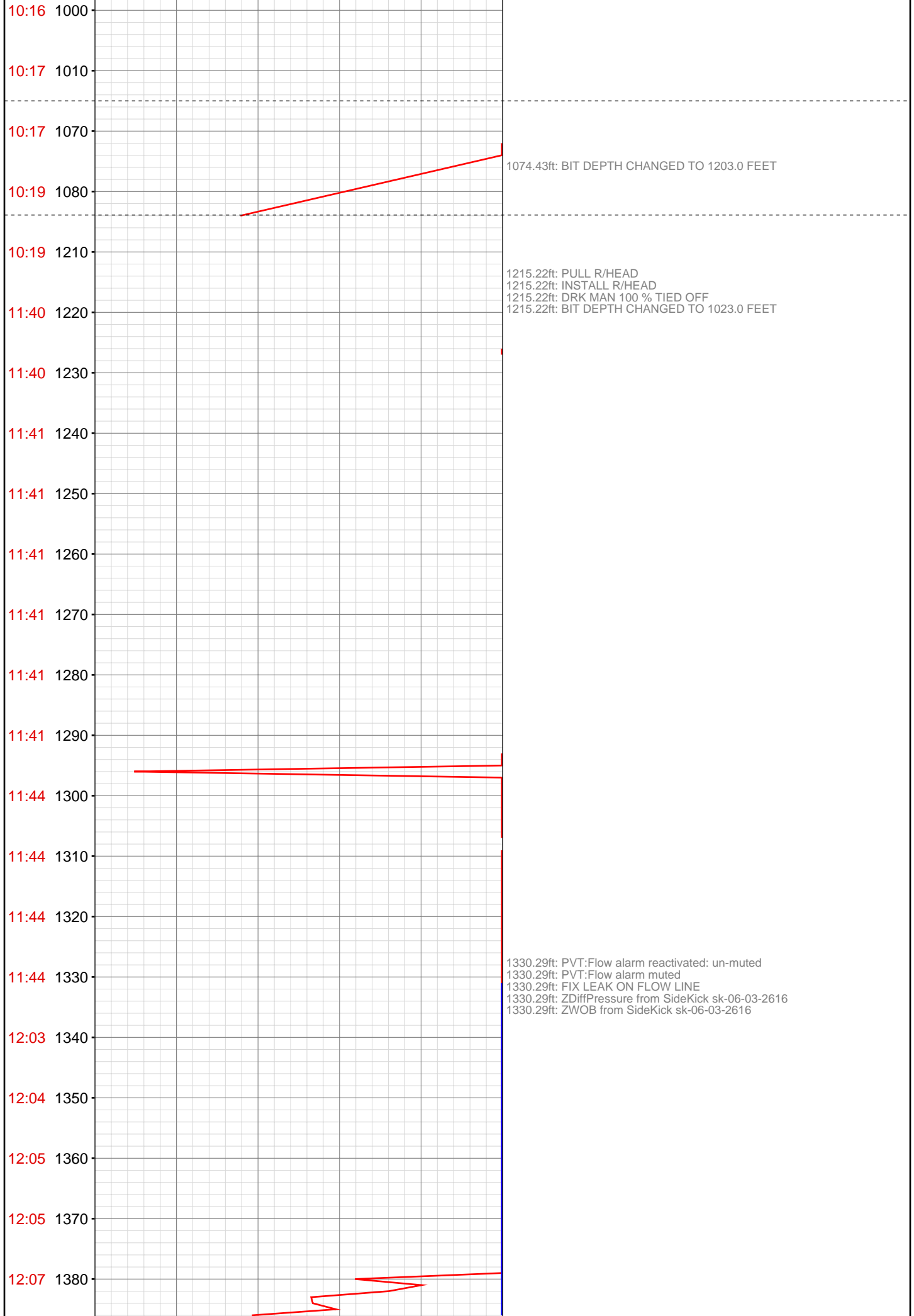
# DataHub EDR Log

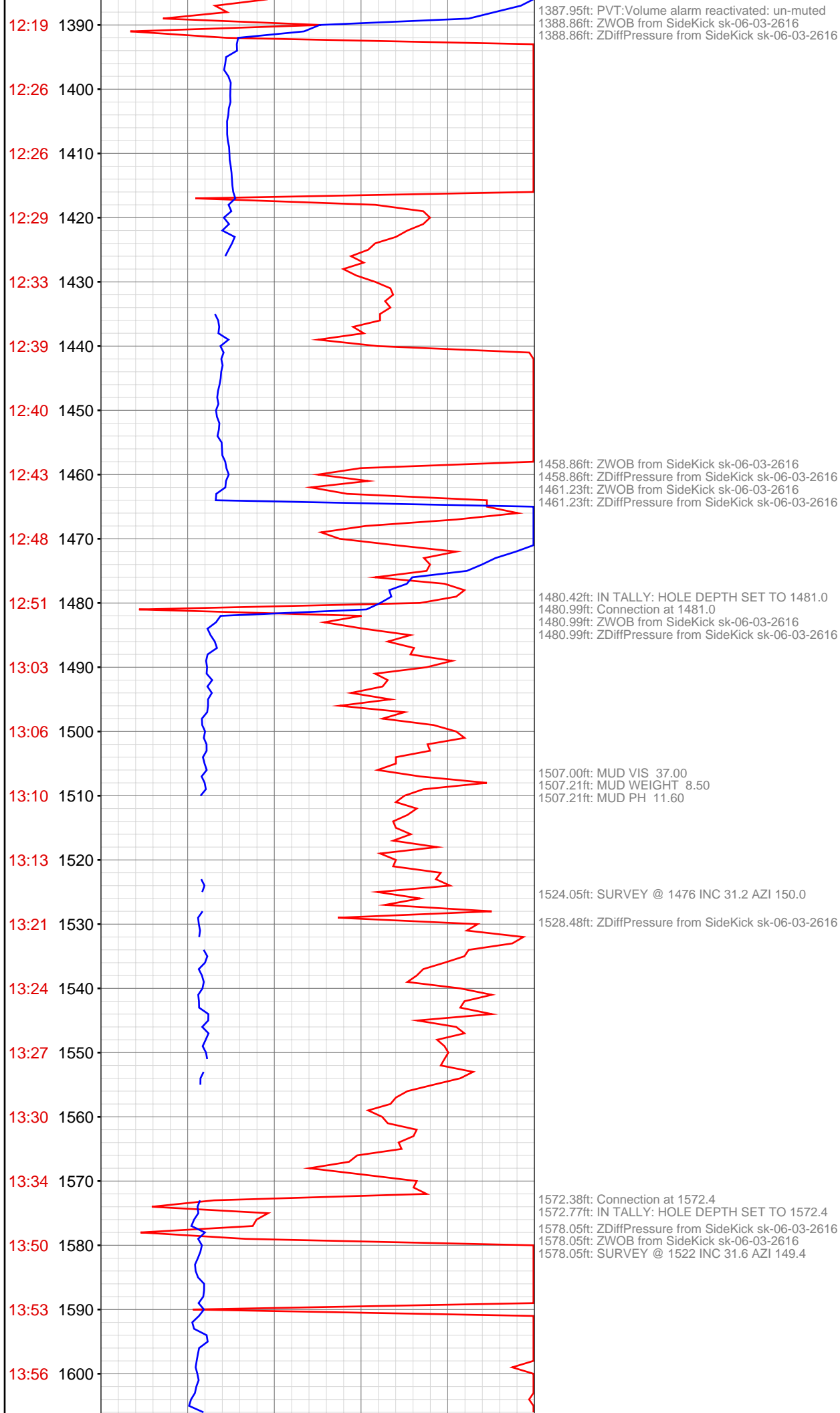
Mon Mar 11, 2013 09:42:38  
Well Dossier 5635942  
Greg Veregin

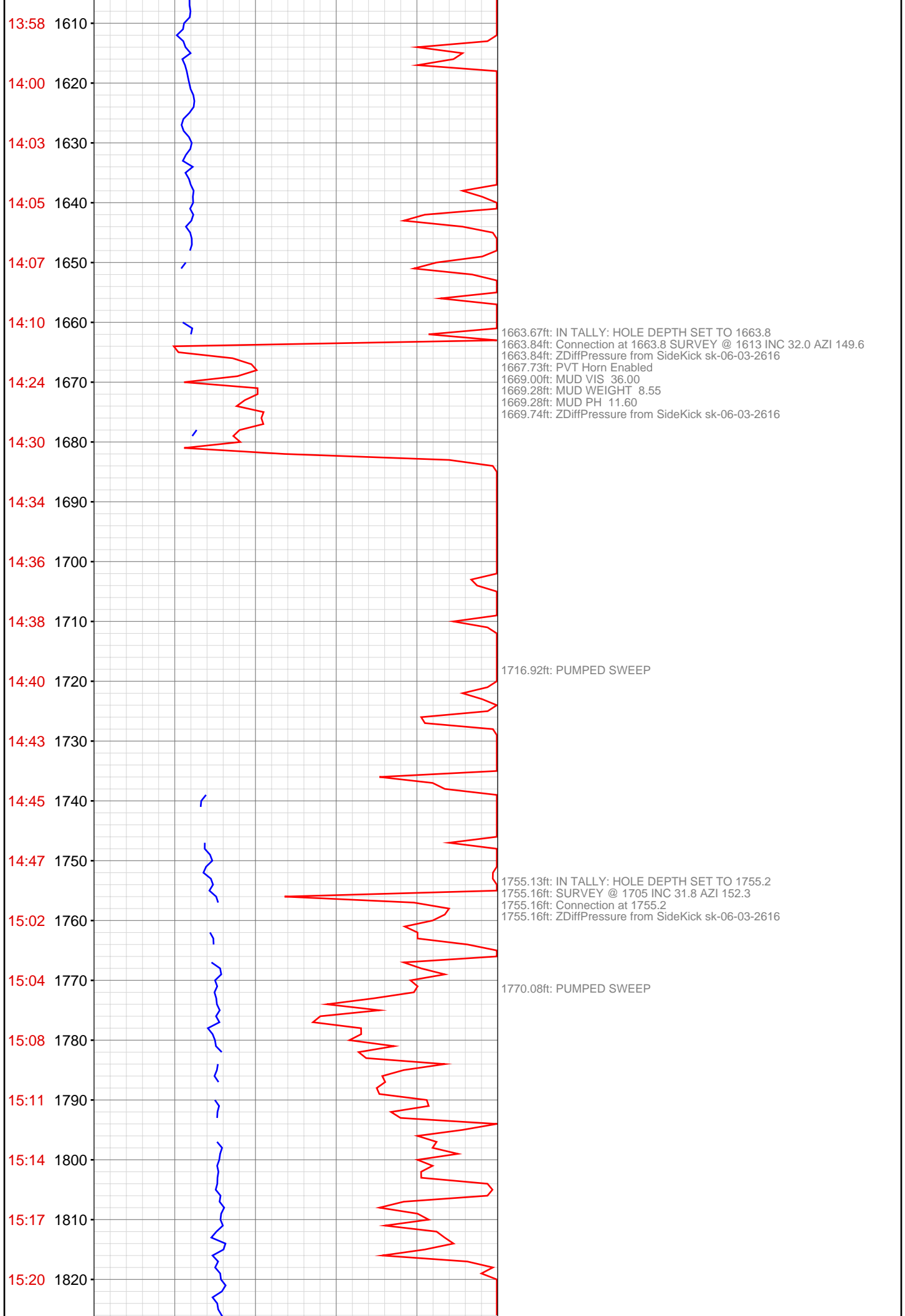
**OPERATOR:** EnCana Oil & Gas (USA), Inc.  
**WELL:** Shideler 30-8b  
**FIELD:**  
**LOCATION:** Sec19 Twp 7s Rng 92w  
**COUNTRY:** USA  
**RIG:** Pat-UTI 308

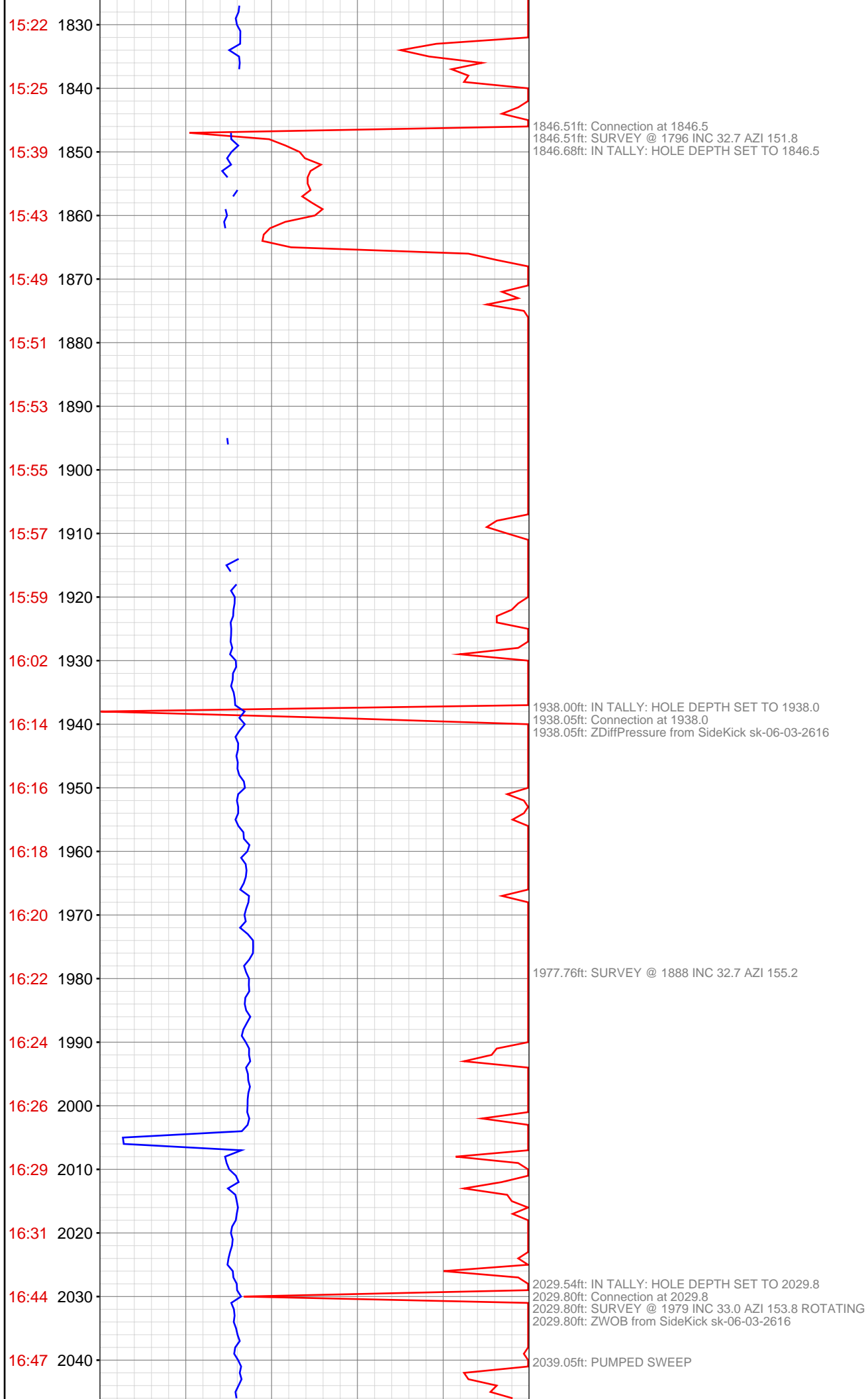
**CONTRACTOR:** Patterson-UTI Drilling Company  
**UNIQUE WELL ID:** 05-045-21873  
**SPUD DATE:** Mar 07, 2013 11:00  
**RELEASE DATE:**

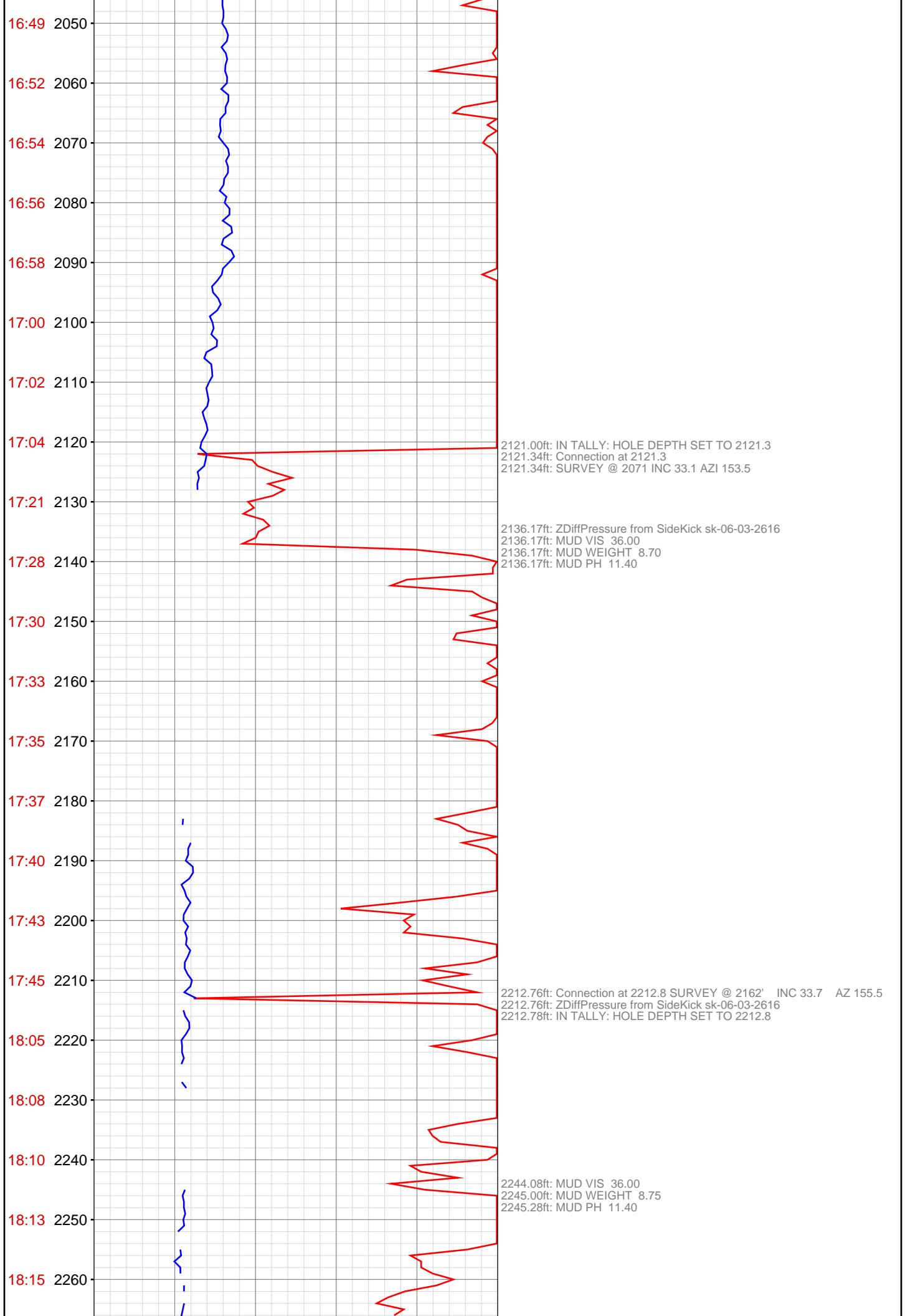


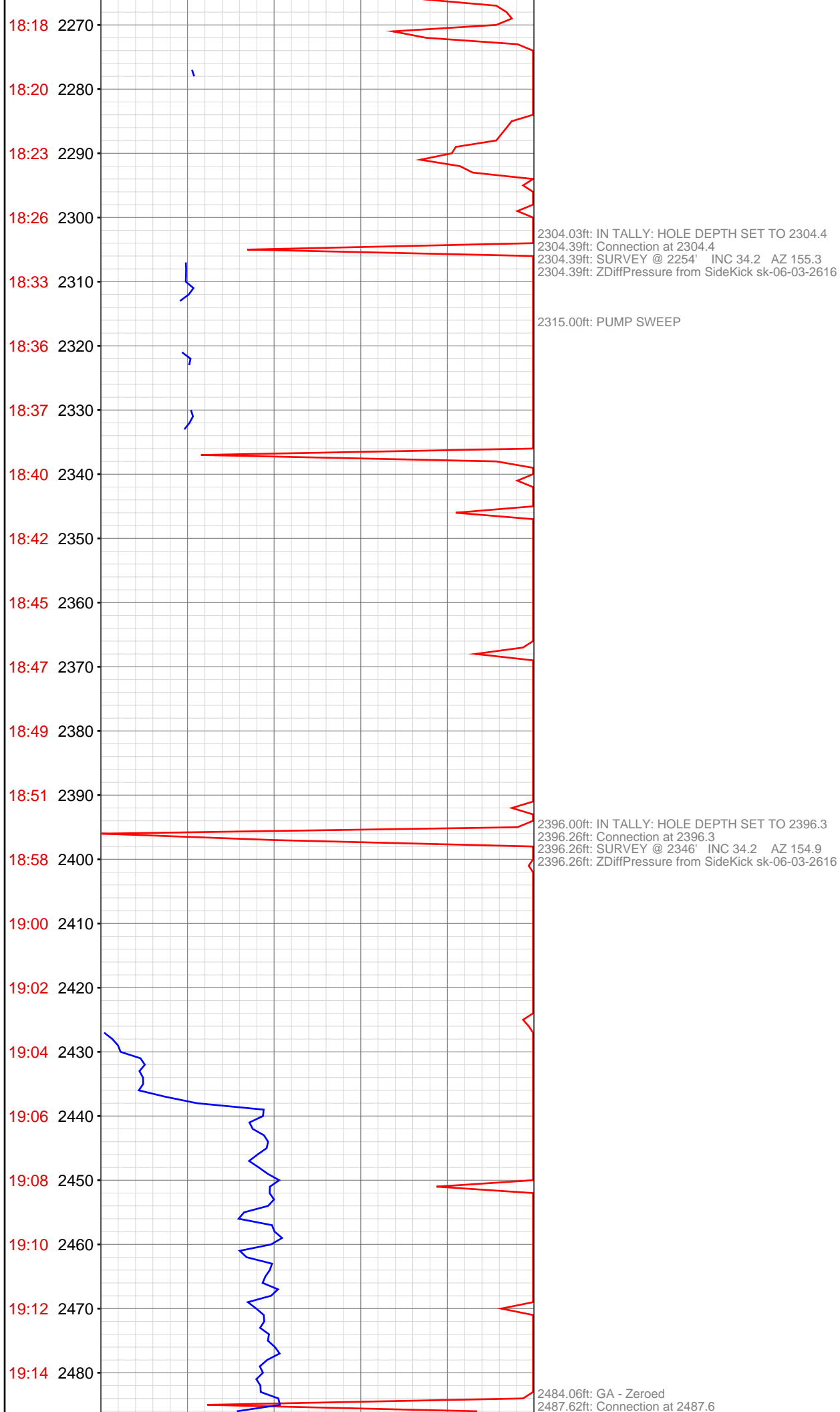


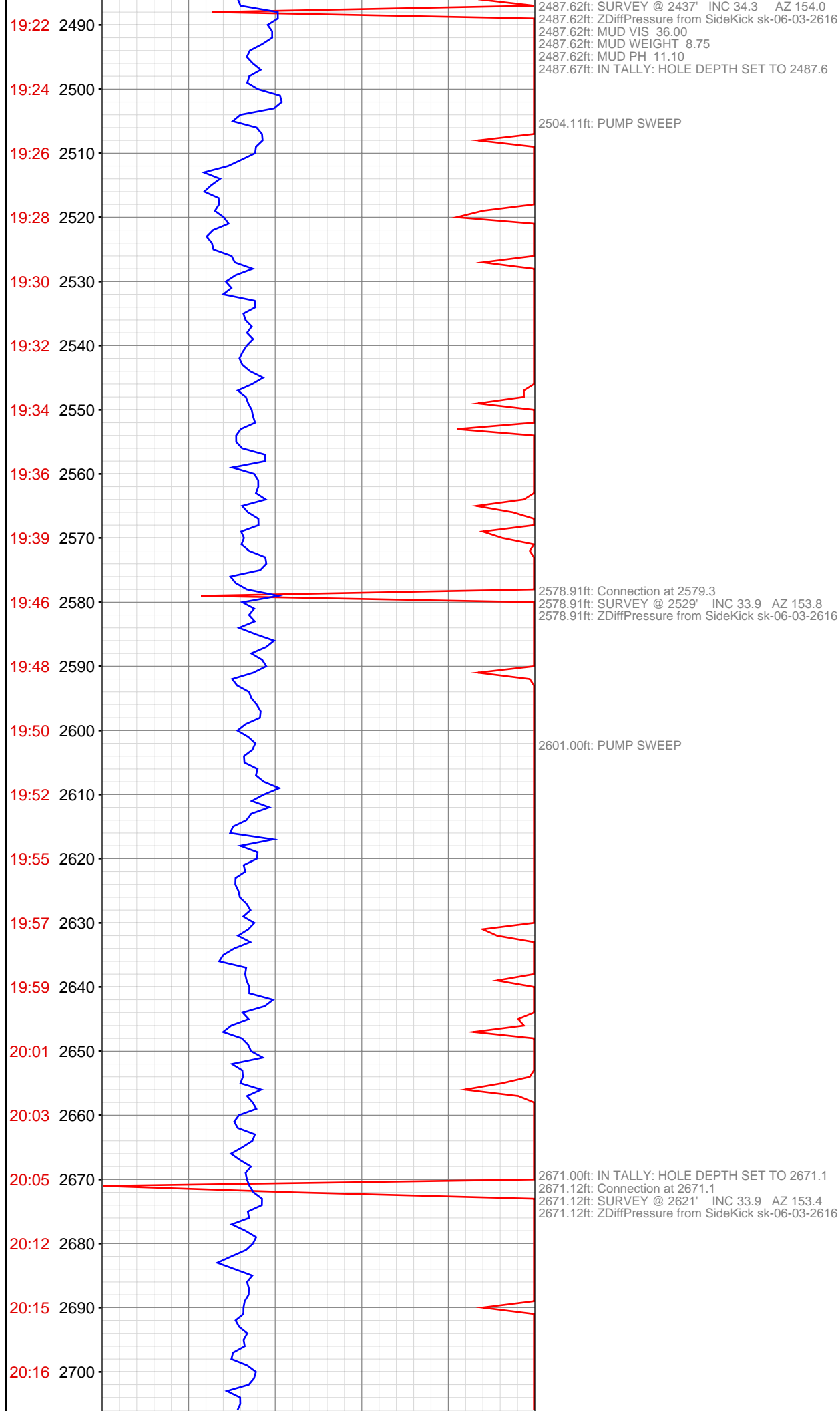




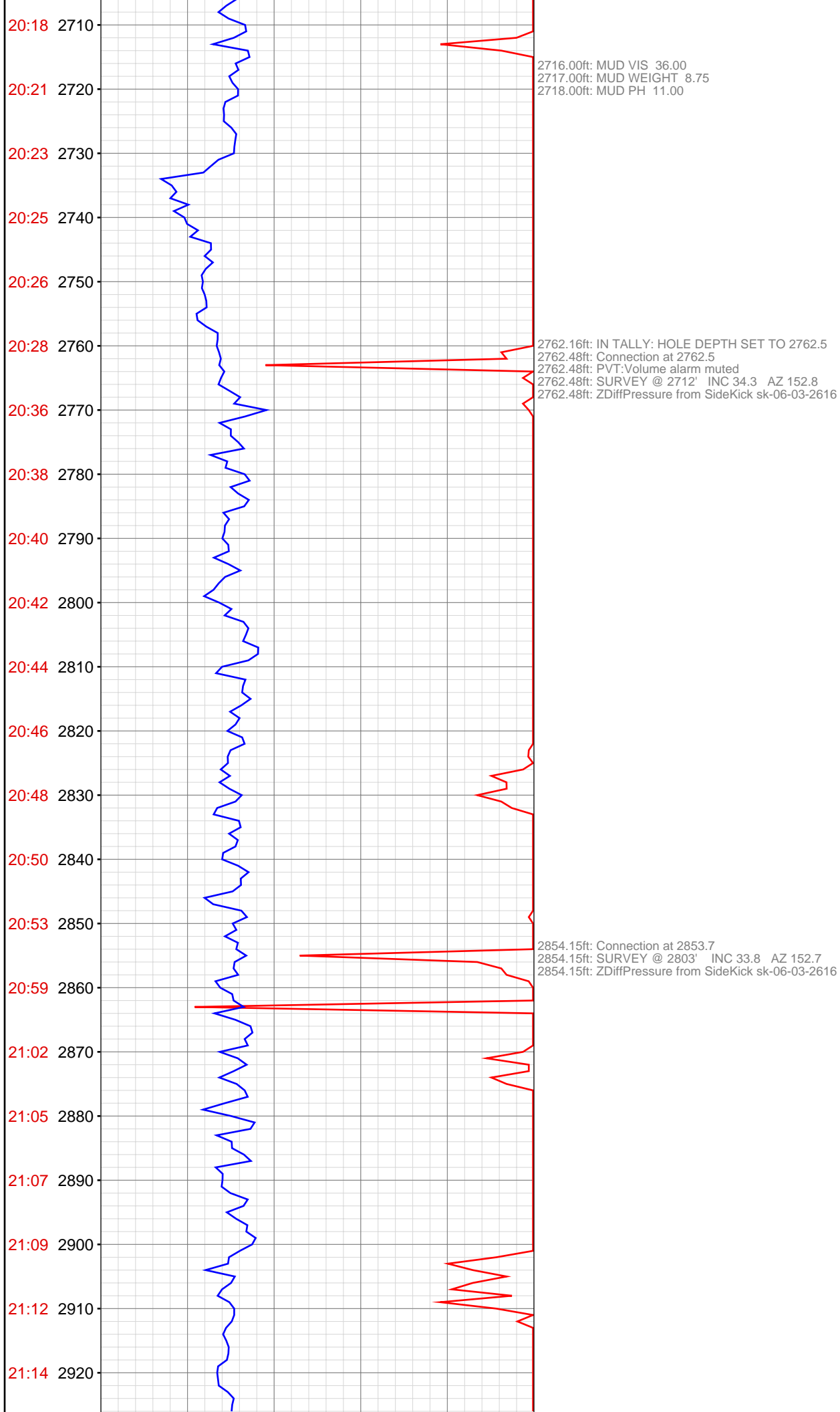


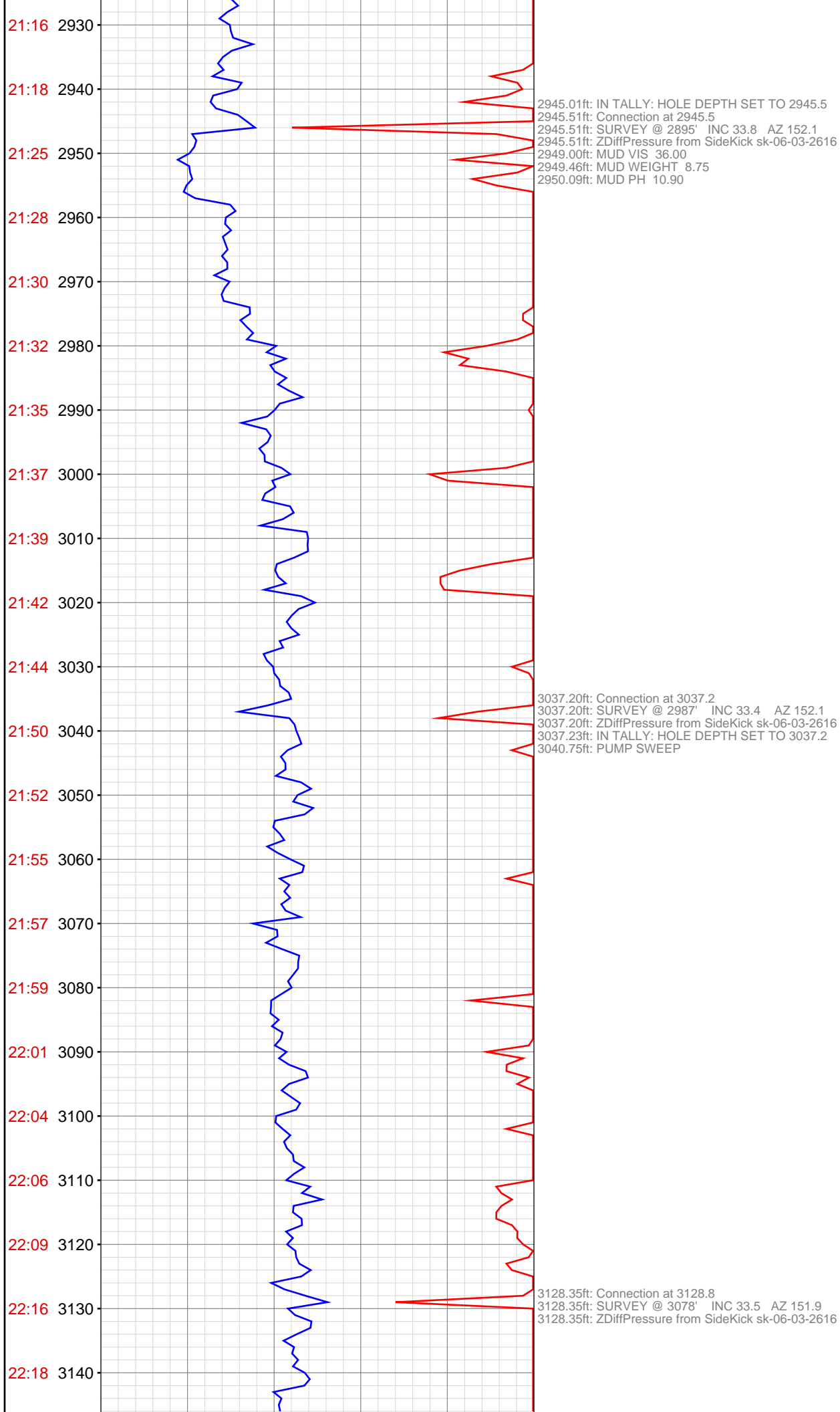


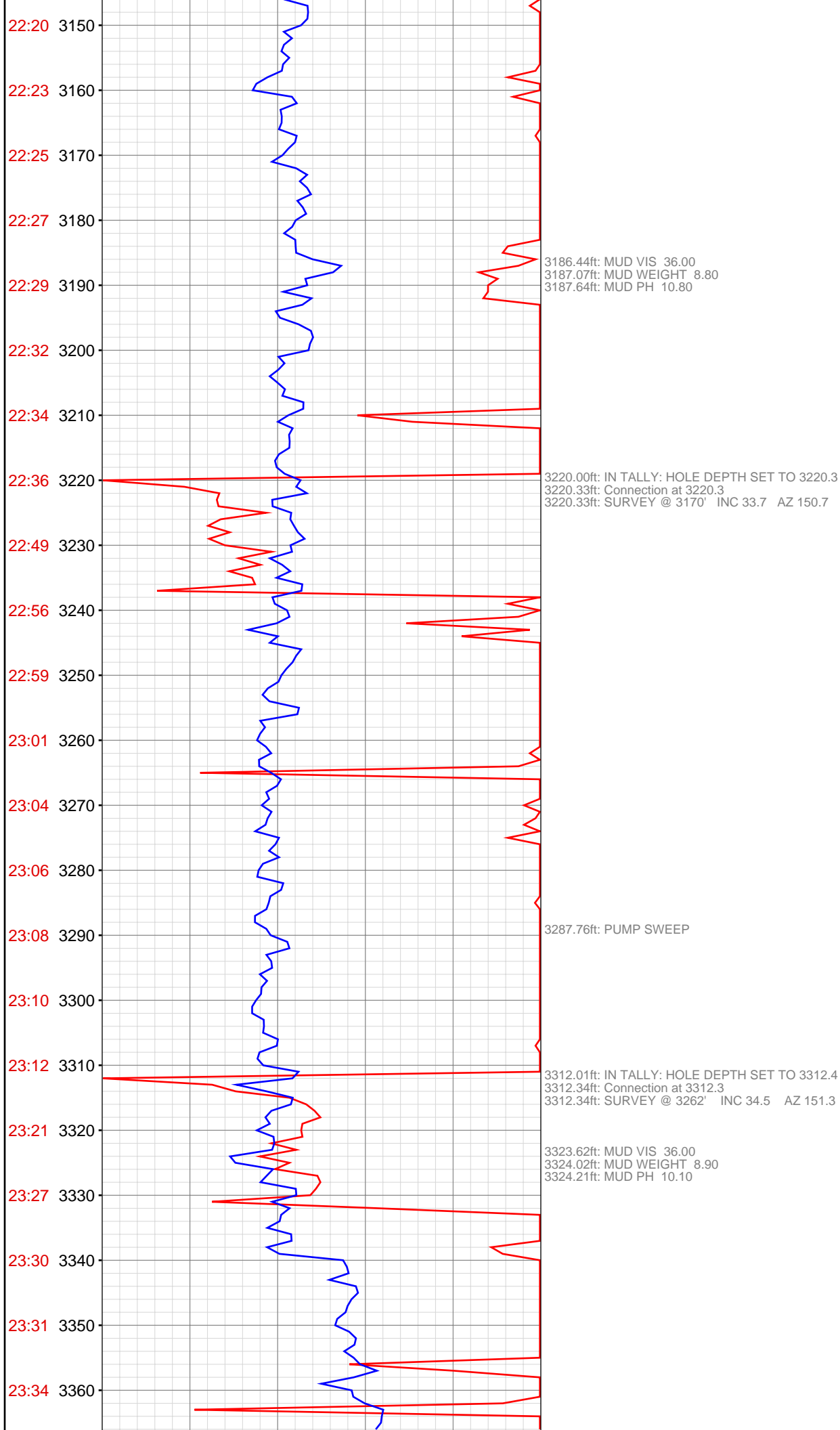


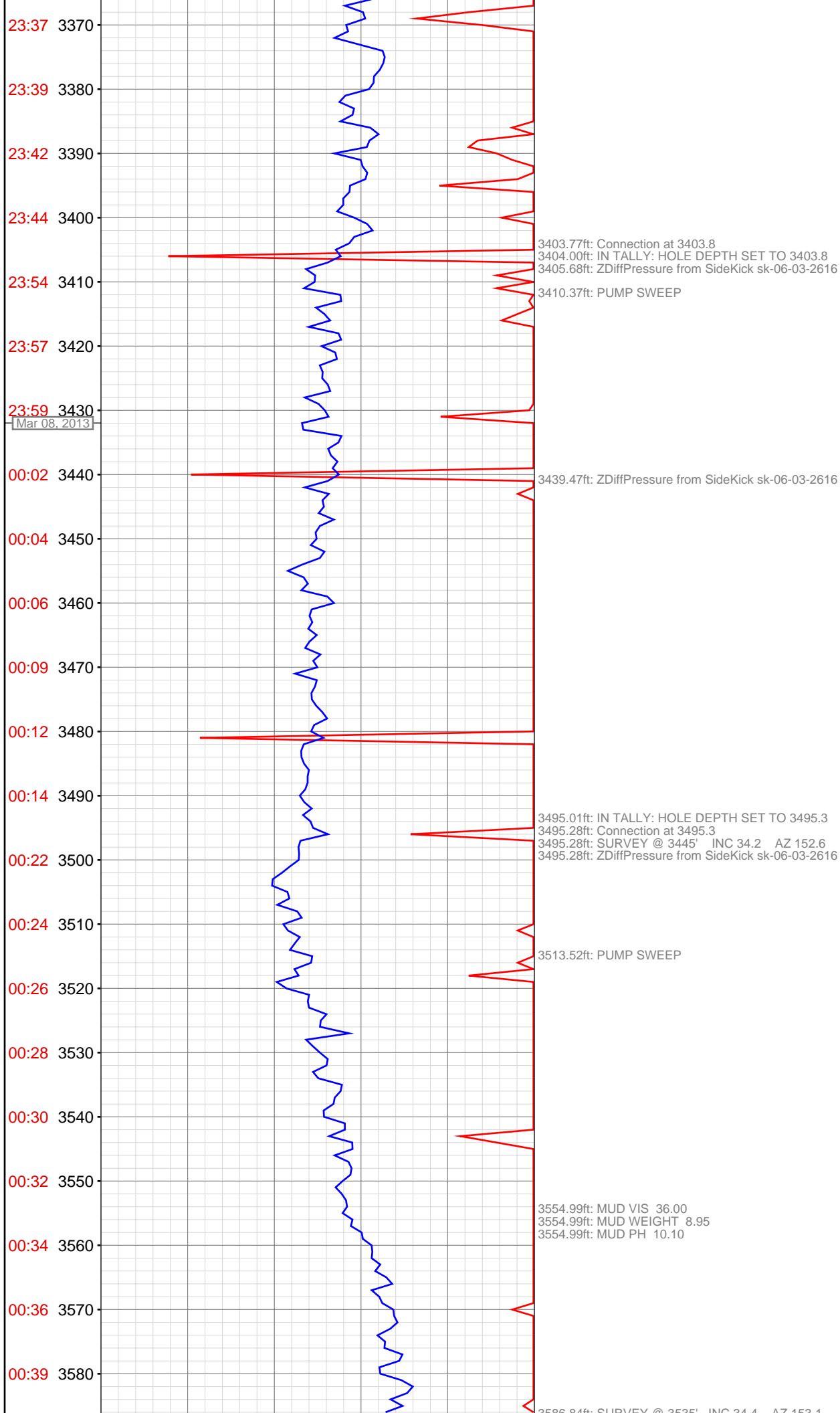


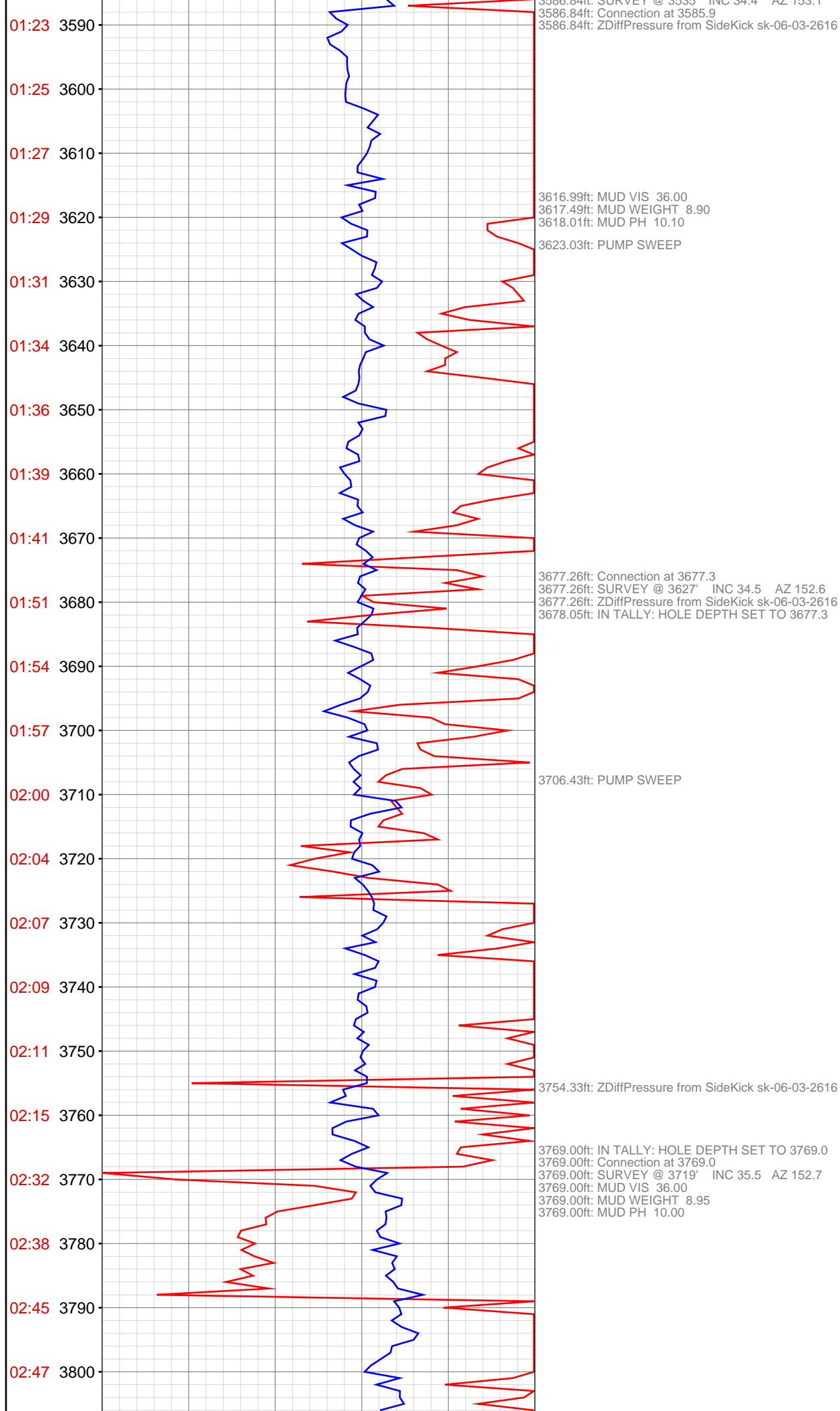


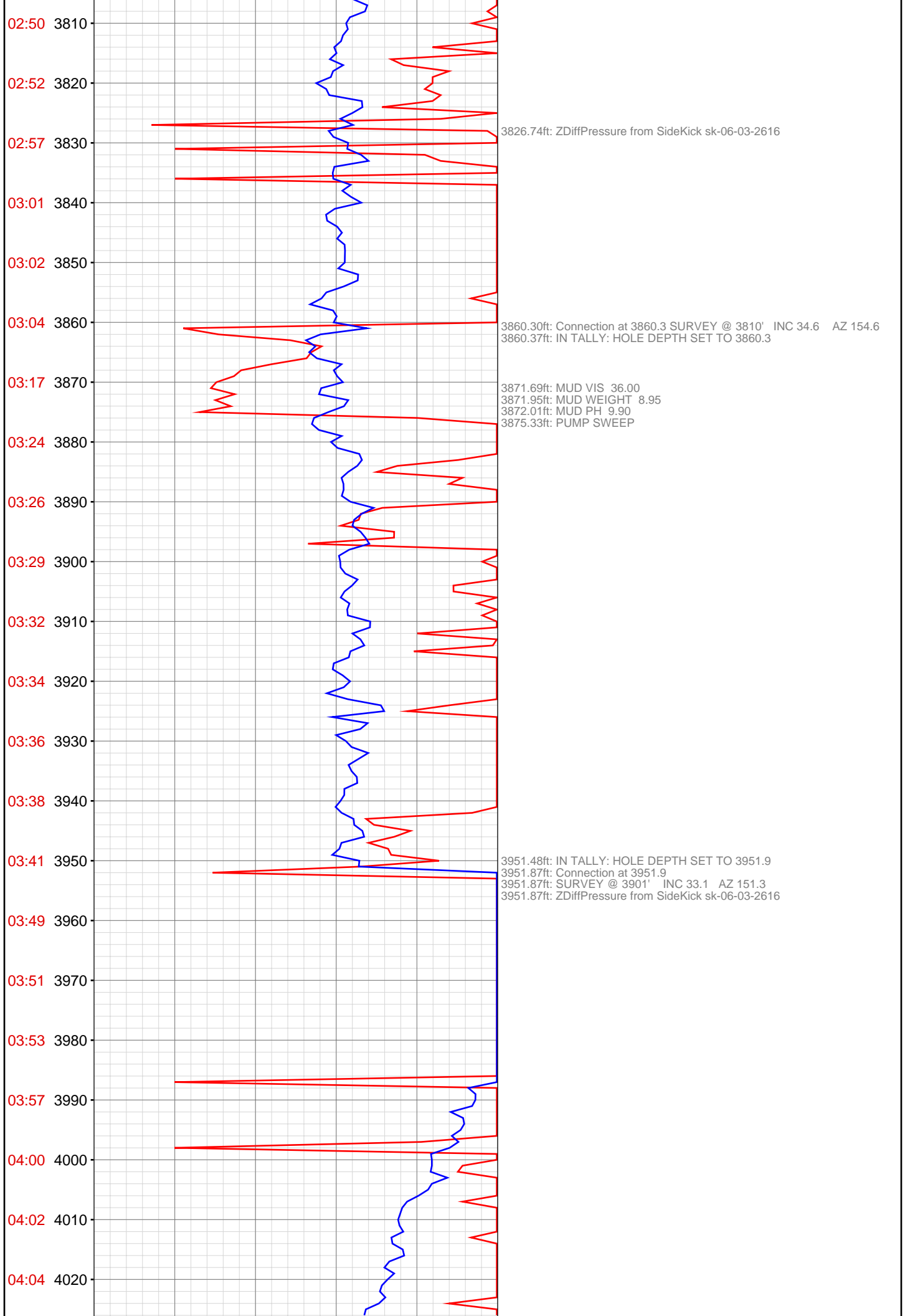


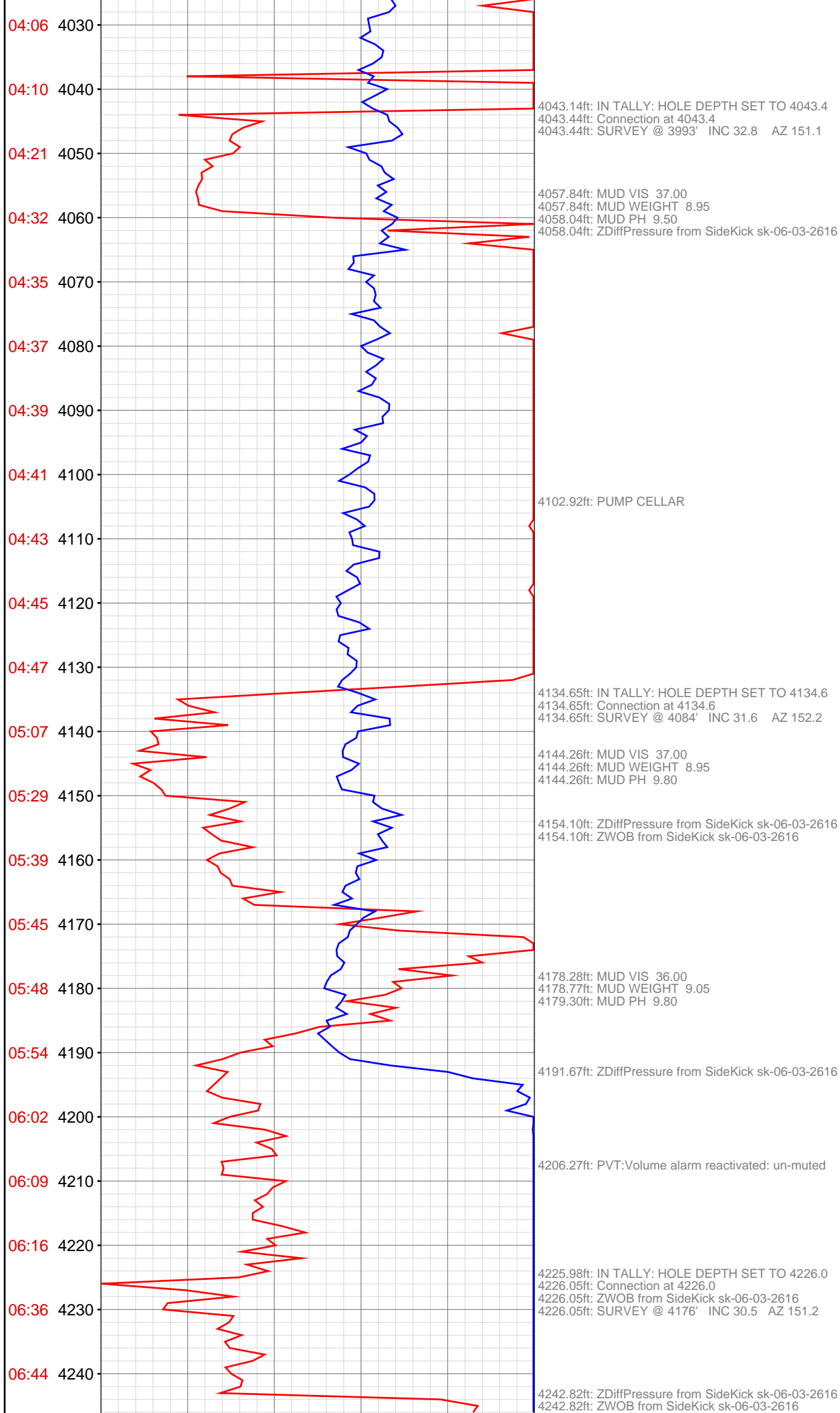


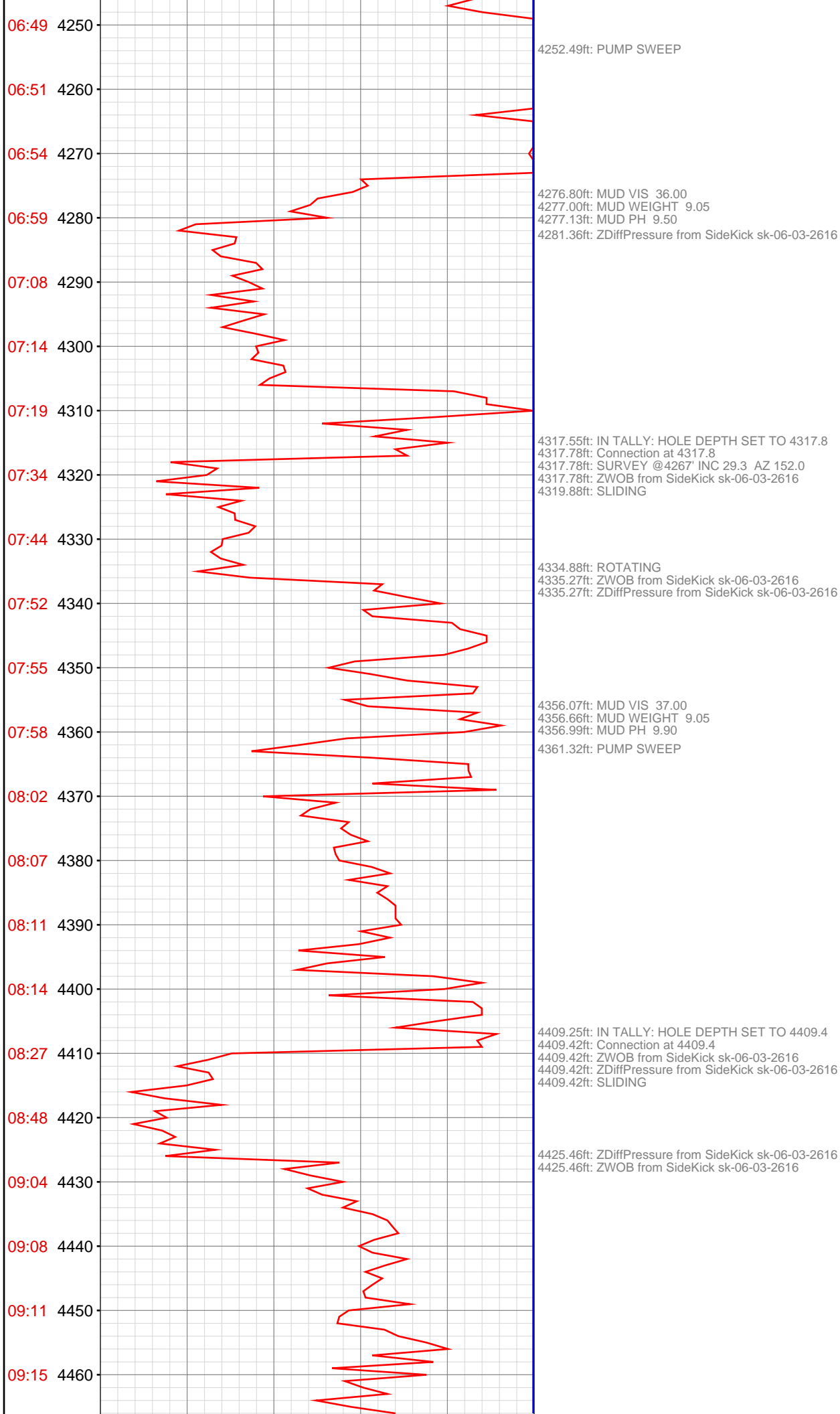




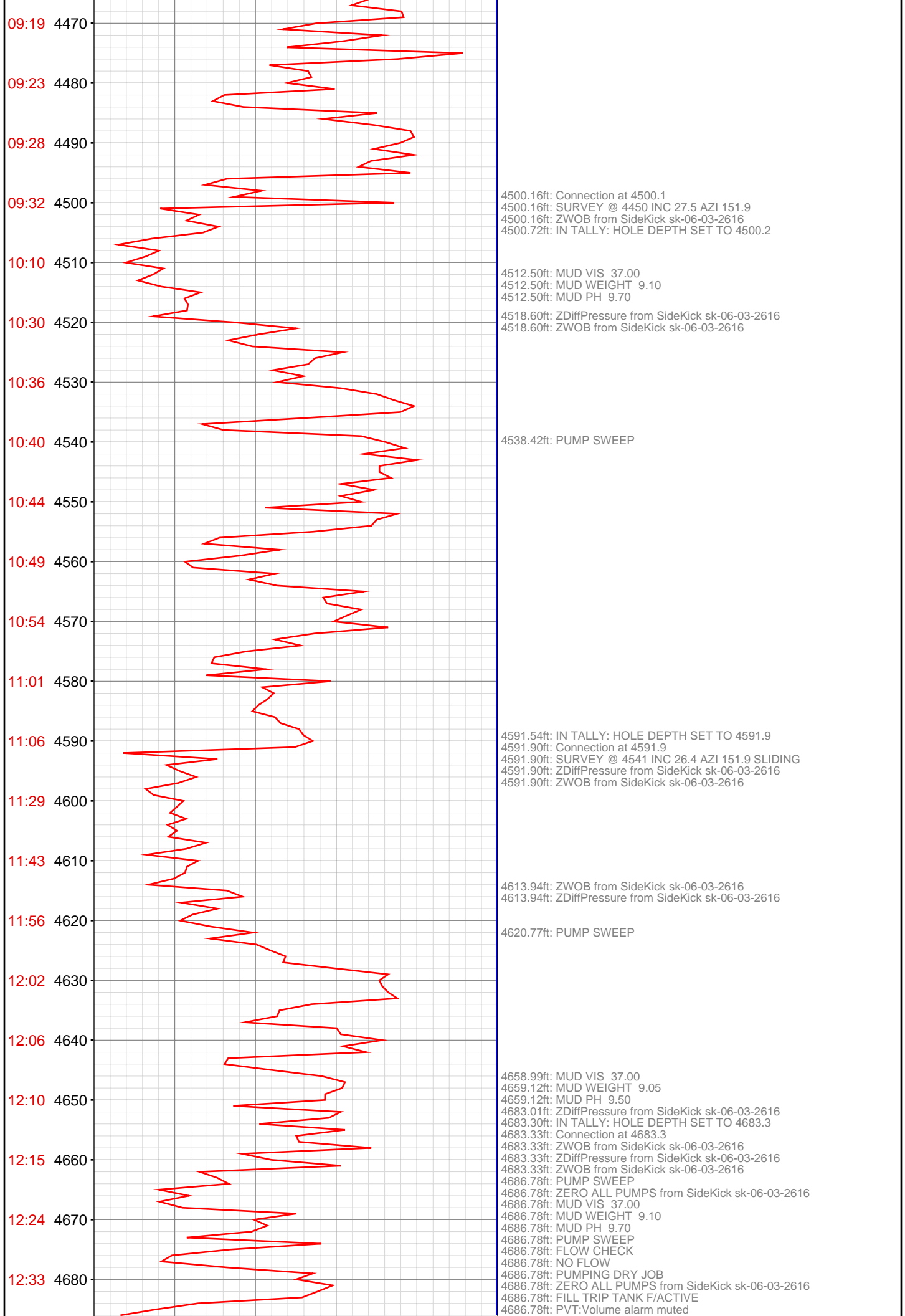


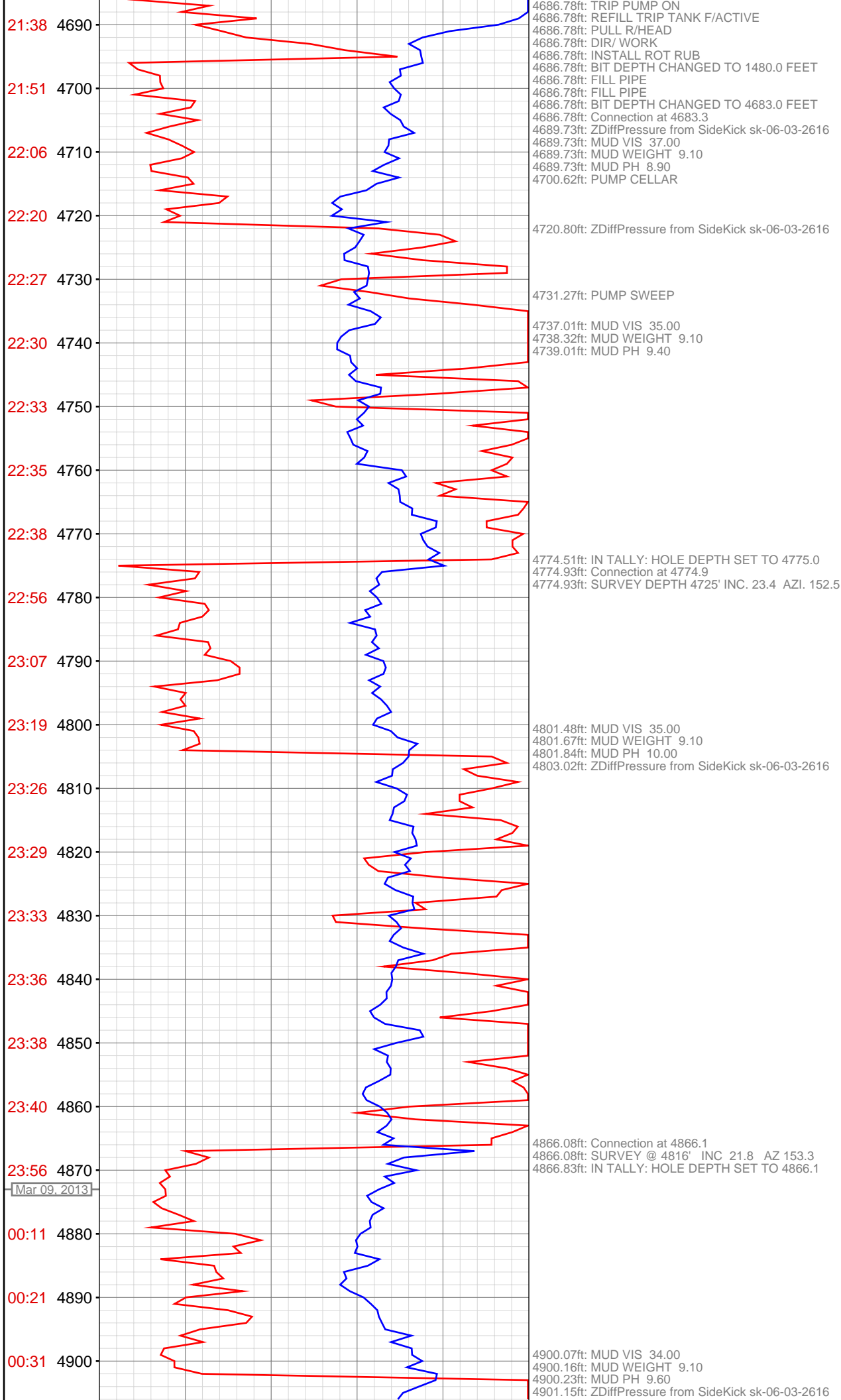


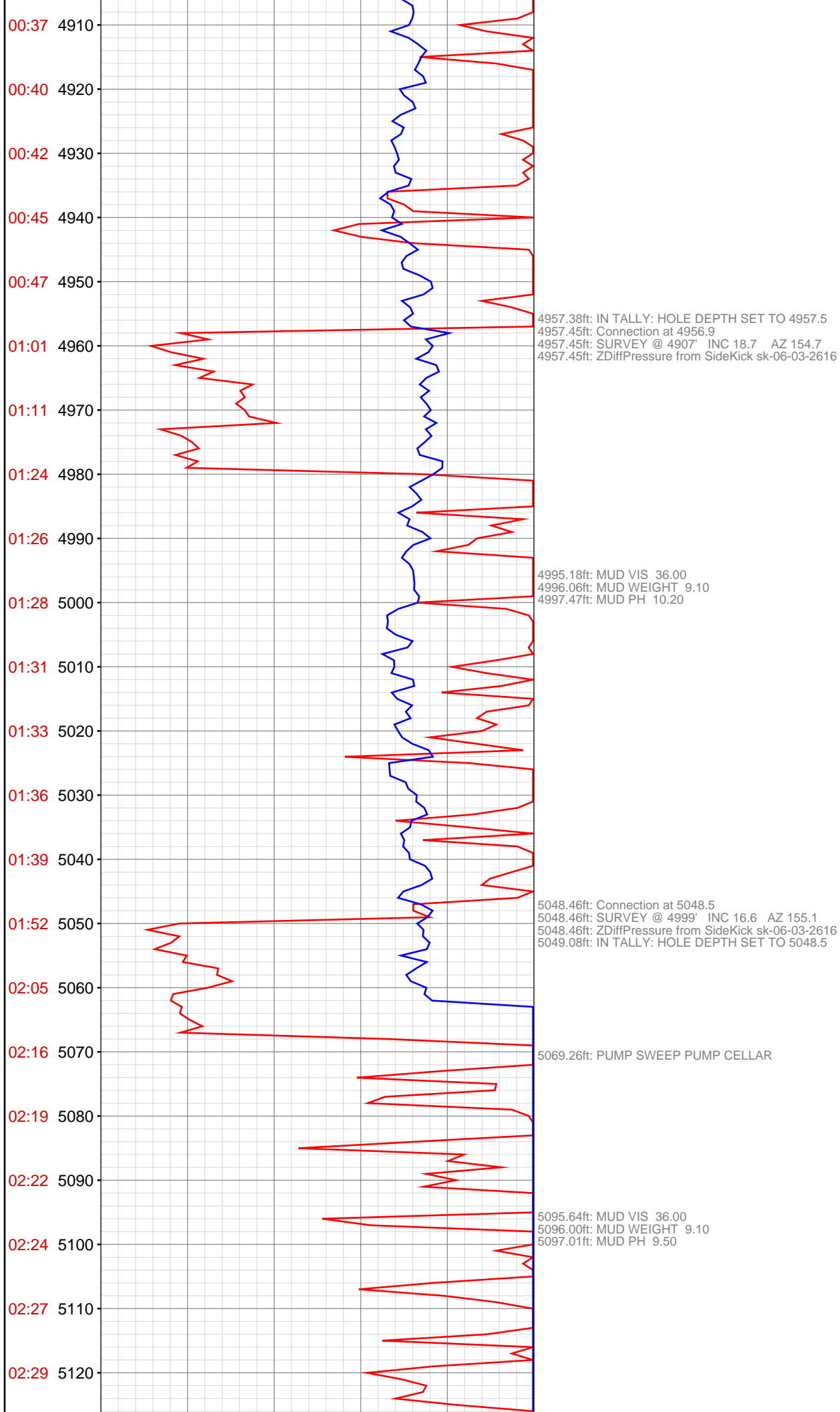


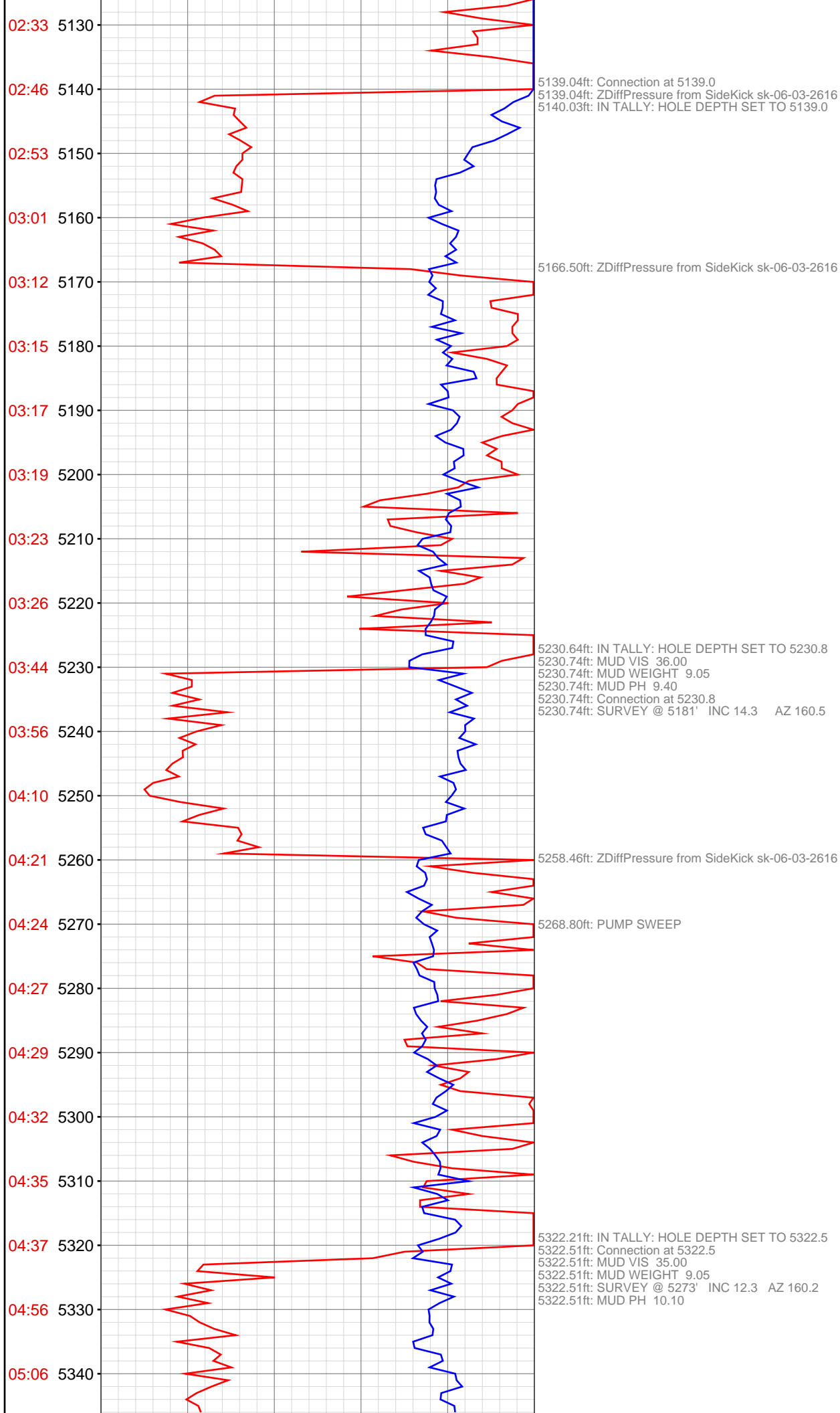


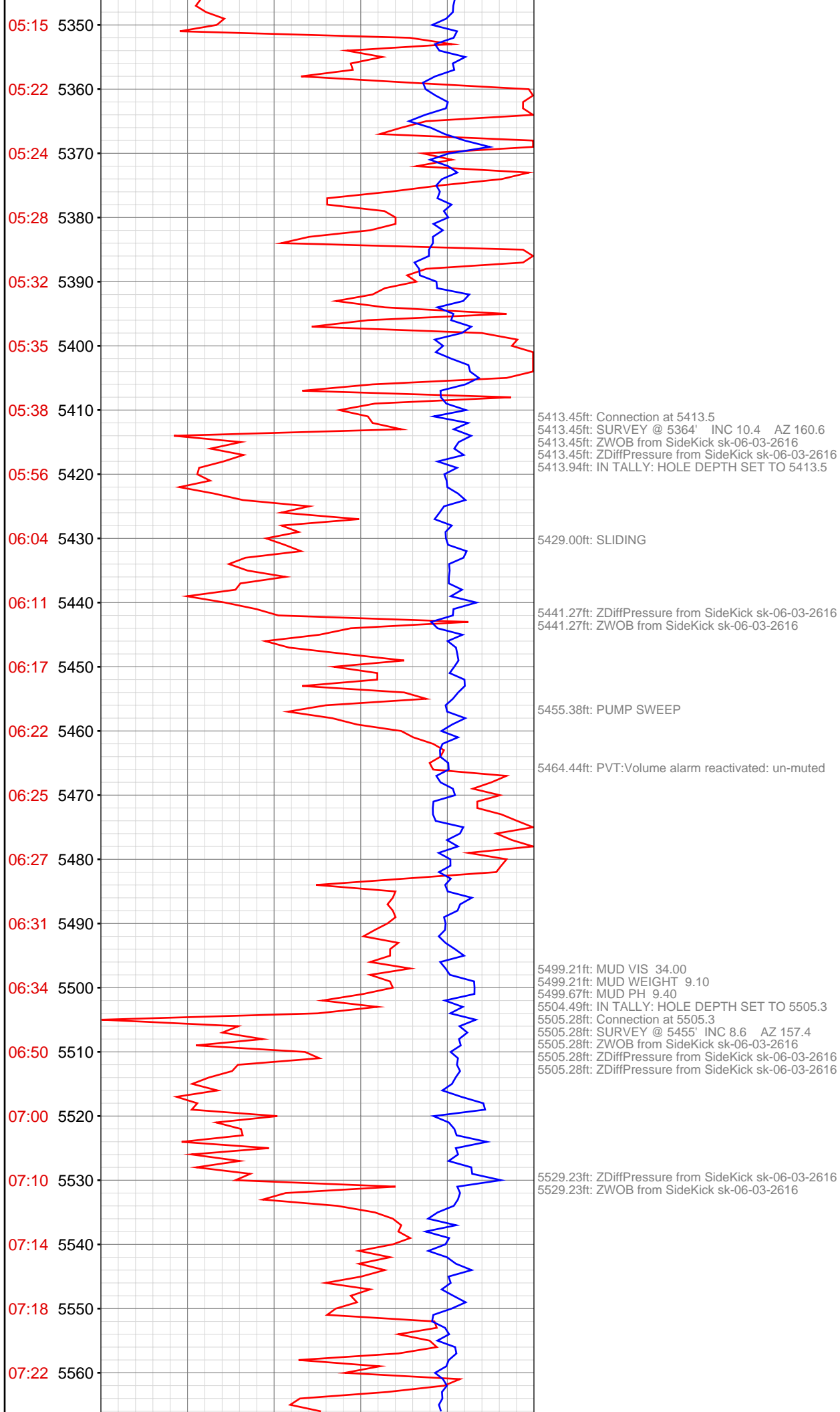


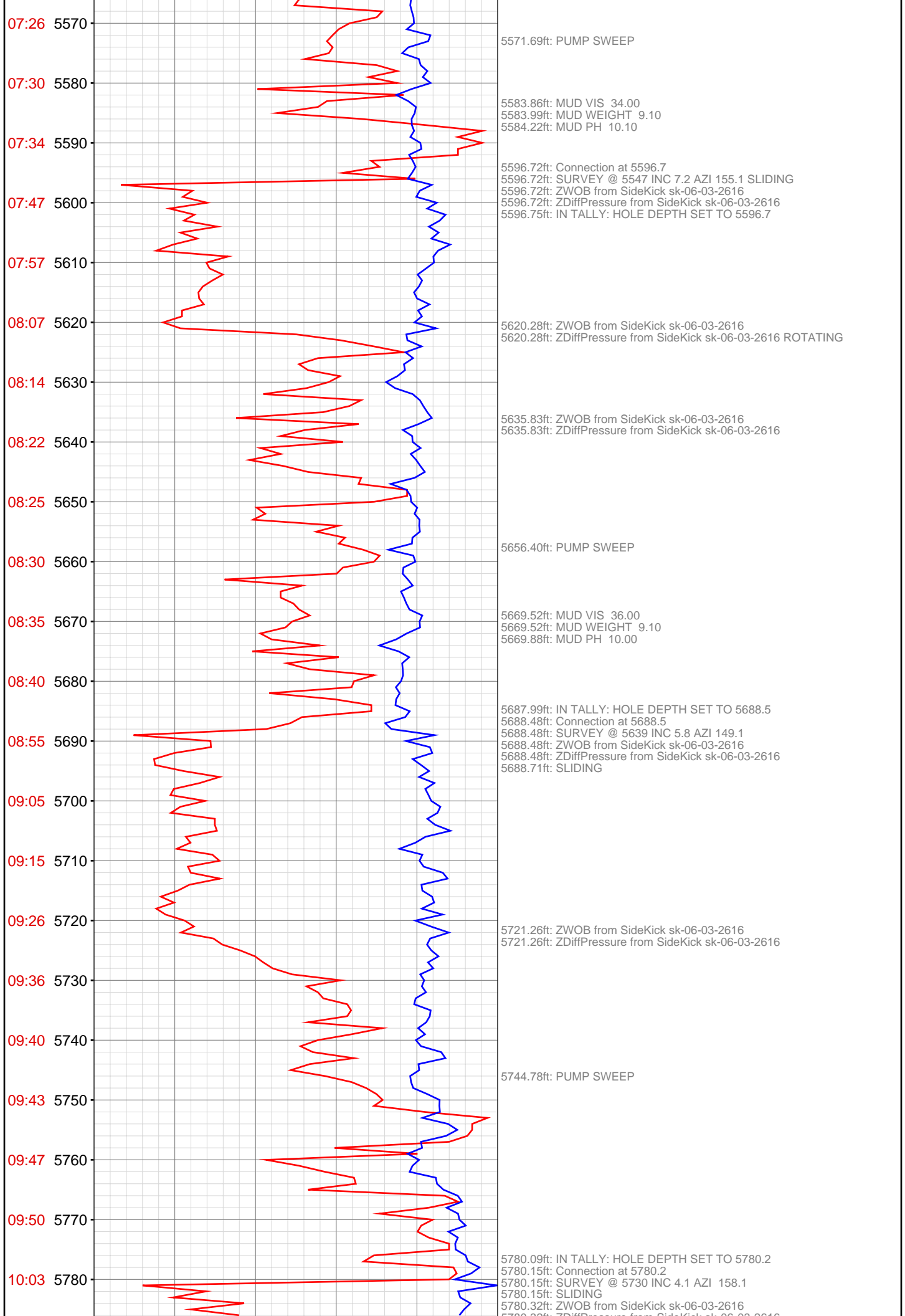


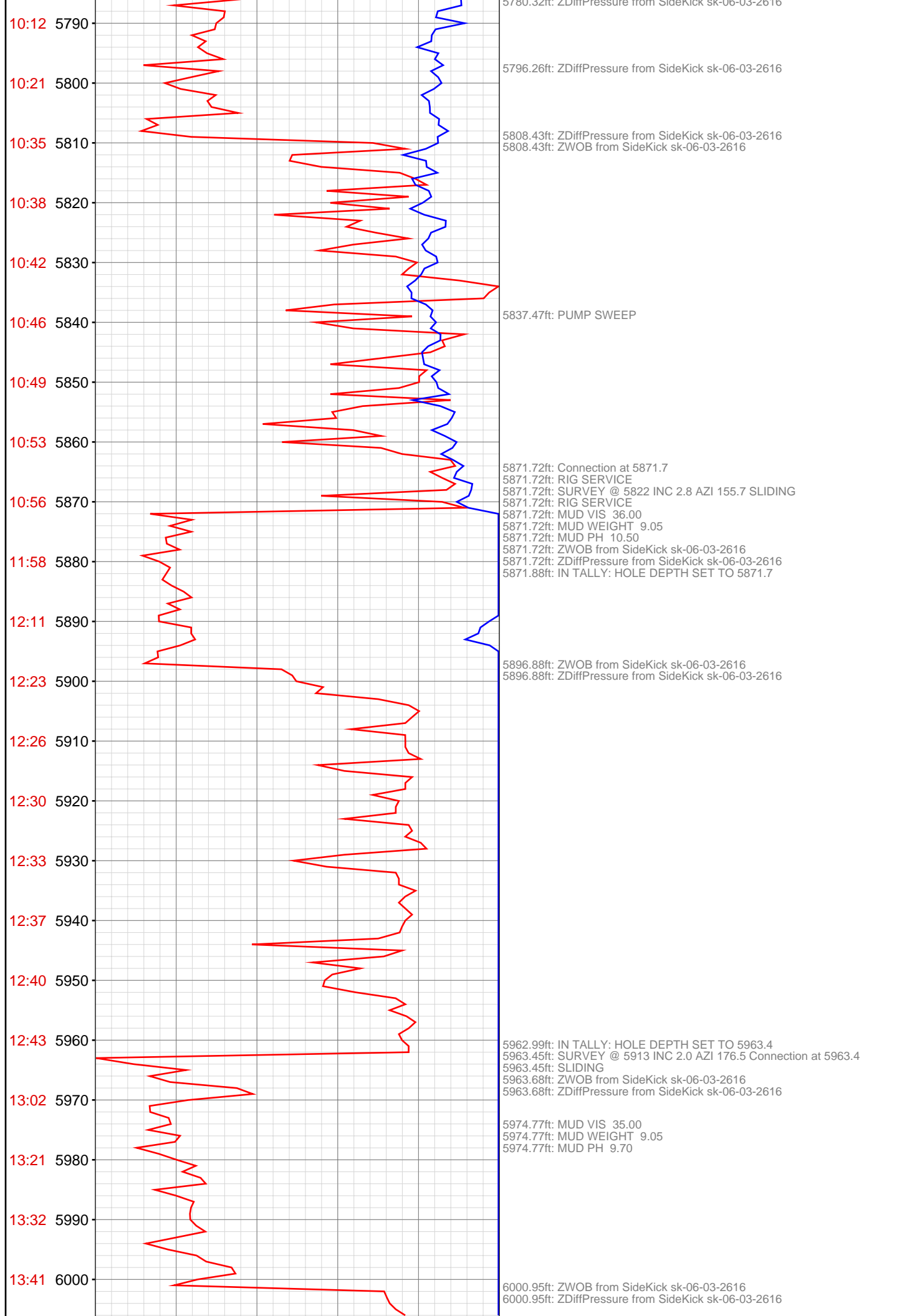


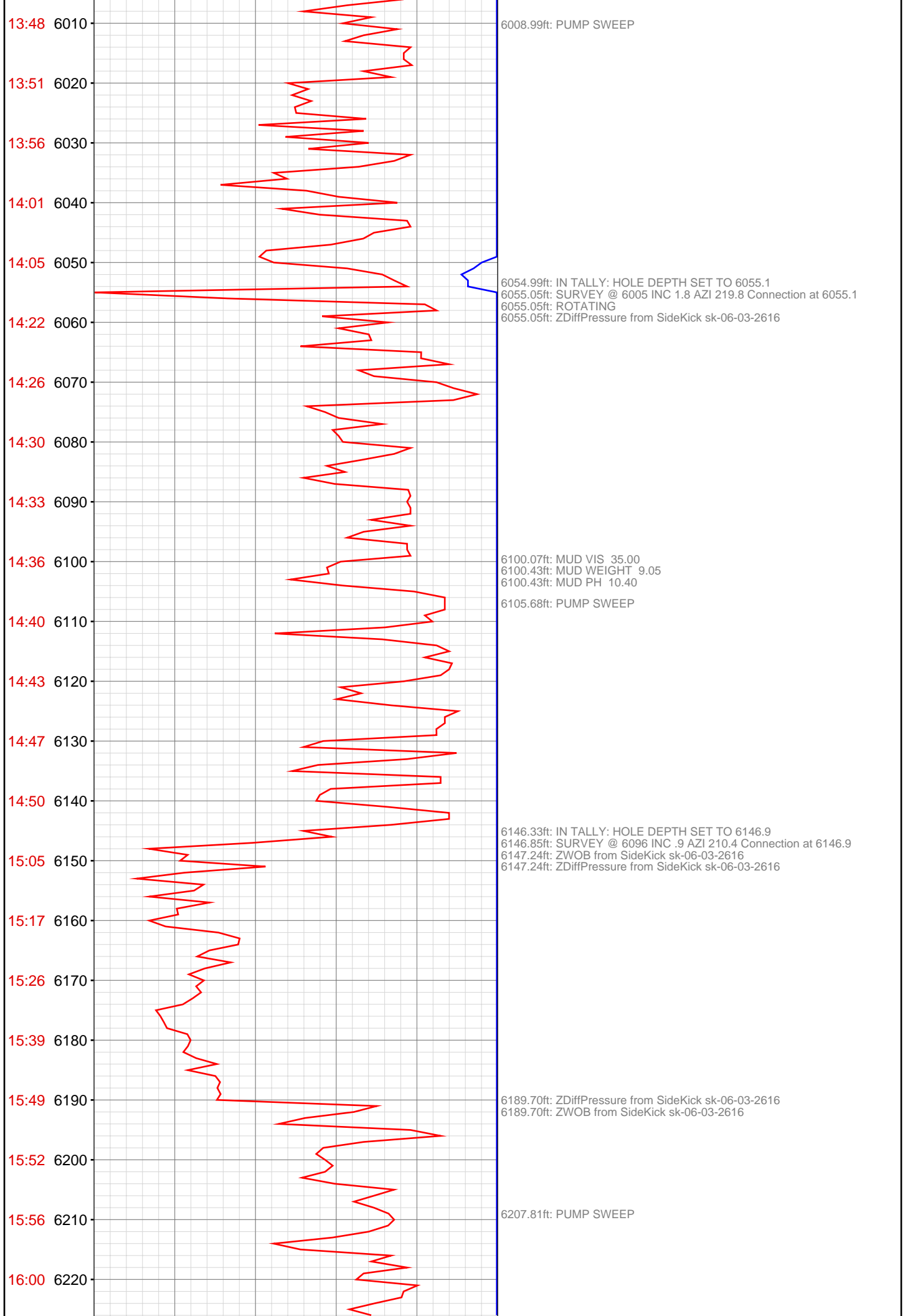














16:04 6230  
16:19 6240  
16:22 6250  
16:27 6260  
16:31 6270  
16:36 6280  
16:40 6290  
16:44 6300  
16:48 6310  
16:52 6320  
17:10 6330  
17:14 6340  
17:18 6350  
17:22 6360  
17:25 6370  
17:29 6380  
17:33 6390  
17:37 6400  
17:41 6410  
17:45 6420  
18:04 6430  
18:08 6440

6238.39ft: SURVEY @ 6188 INC .7 AZI 297.7 Connection at 6238.4  
6238.39ft: ROTATING  
6238.39ft: ZWOB from SideKick sk-06-03-2616  
6238.39ft: ZDiffPressure from SideKick sk-06-03-2616  
6238.55ft: IN TALLY: HOLE DEPTH SET TO 6238.4

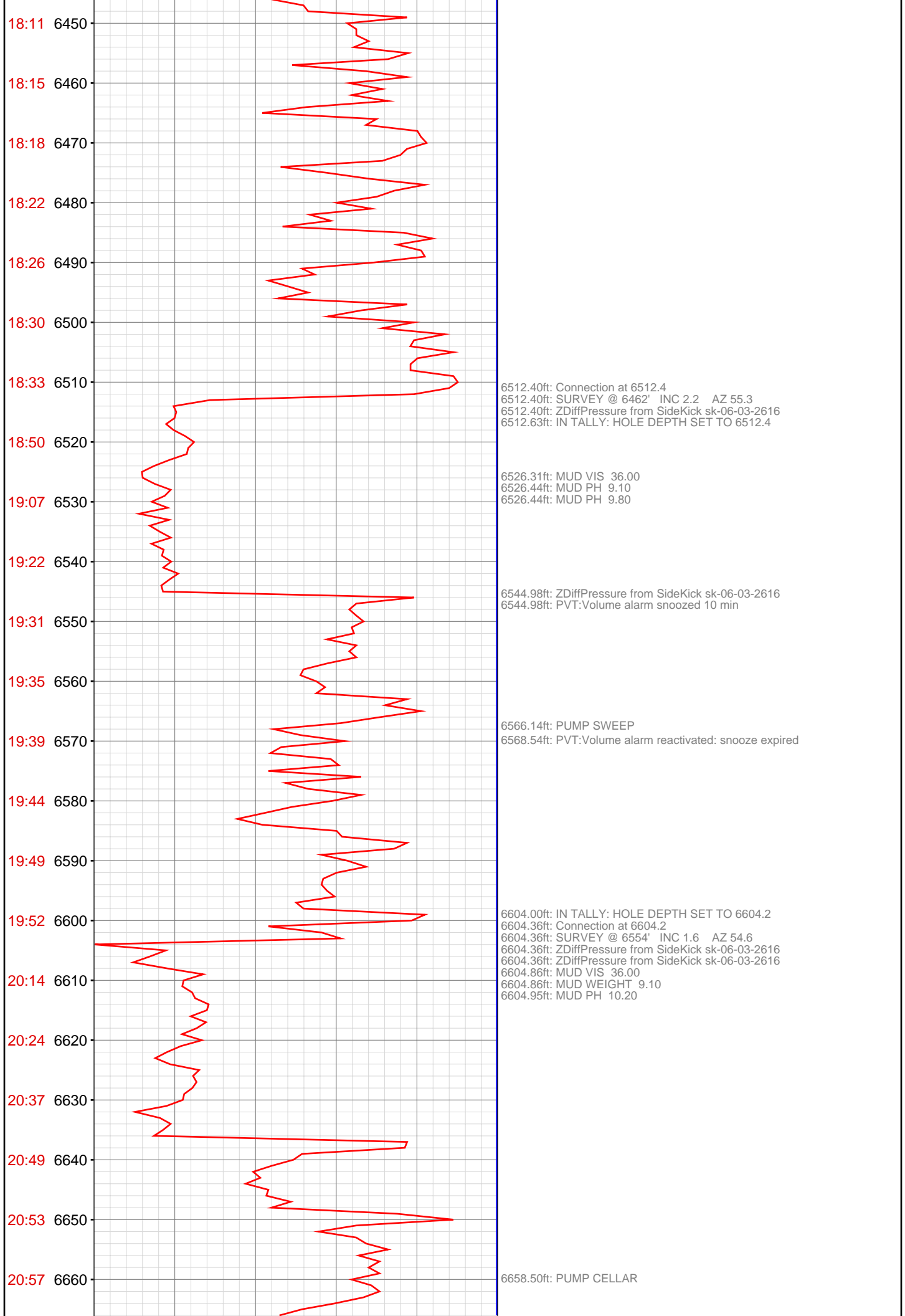
6289.60ft: PUMP SWEEP

6329.30ft: SURVEY @ @ 6279 INC .7 AZI 343.0  
6329.30ft: ROTATING  
6329.30ft: Connection at 6329.3  
6329.30ft: ZDiffPressure from SideKick sk-06-03-2616  
6329.82ft: IN TALLY: HOLE DEPTH SET TO 6329.3

6345.44ft: PUMPING CELLAR

6382.68ft: END OF CELLAR

6420.87ft: IN TALLY: HOLE DEPTH SET TO 6421.0  
6421.00ft: Connection at 6421.0  
6421.00ft: SURVEY @ 6370' INC 1.2 AZ 31.2  
6421.00ft: ZDiffPressure from SideKick sk-06-03-2616  
6426.54ft: MUD VIS 36.00  
6427.03ft: MUD WEIGHT 9.05  
6428.02ft: MUD PH 10.30  
6428.48ft: ZDiffPressure from SideKick sk-06-03-2616



21:01 6670  
21:06 6680  
21:10 6690  
21:27 6700  
21:42 6710  
21:53 6720  
22:07 6730  
22:11 6740  
22:15 6750  
22:20 6760  
22:24 6770  
22:28 6780  
22:42 6790  
22:46 6800  
22:51 6810  
22:55 6820  
23:01 6830  
23:06 6840  
23:10 6850  
23:15 6860  
23:20 6870  
23:38 6880

6673.00ft: MUD VIS 36.00  
6673.00ft: MUD WEIGHT 9.10  
6673.36ft: MUD PH 9.90

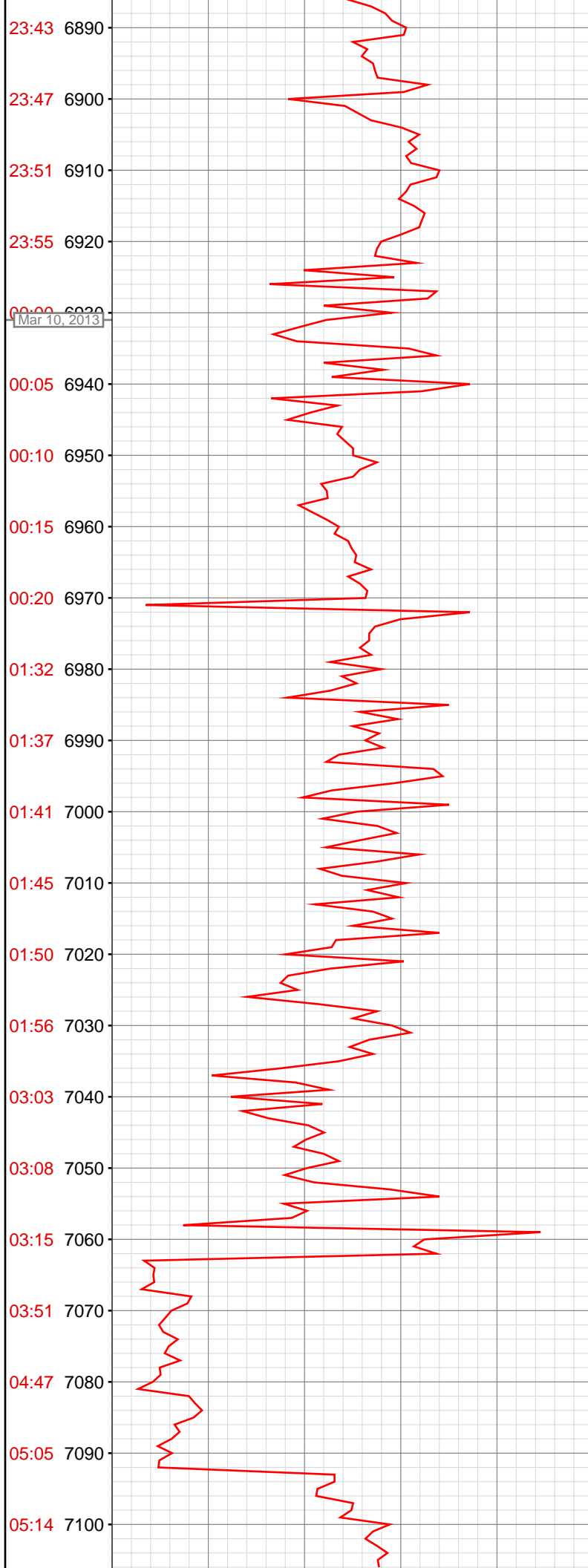
6696.00ft: IN TALLY: HOLE DEPTH SET TO 6696.1  
6696.06ft: Connection at 6696.1  
6696.06ft: SURVEY @ 6646' INC 0.3 AZ 57.6  
6696.06ft: ZDiffPressure from SideKick sk-06-03-2616

6727.95ft: ZDiffPressure from SideKick sk-06-03-2616

6742.42ft: MUD VIS 36.00  
6743.01ft: MUD WEIGHT 9.10  
6743.18ft: MUD PH 9.60

6787.63ft: IN TALLY: HOLE DEPTH SET TO 6787.8  
6787.80ft: Connection at 6787.8  
6787.80ft: SURVEY @ 6737' INC 1.0 AZ 228.0  
6787.80ft: ZDiffPressure from SideKick sk-06-03-2616

6879.00ft: IN TALLY: HOLE DEPTH SET TO 6879.5  
6879.49ft: CIRCULATE OUT GAS  
6879.49ft: Connection at 6879.5  
6879.49ft: SURVEY @ 6829' INC 0.6 AZ 170.7  
6879.49ft: ZDiffPressure from SideKick sk-06-03-2616



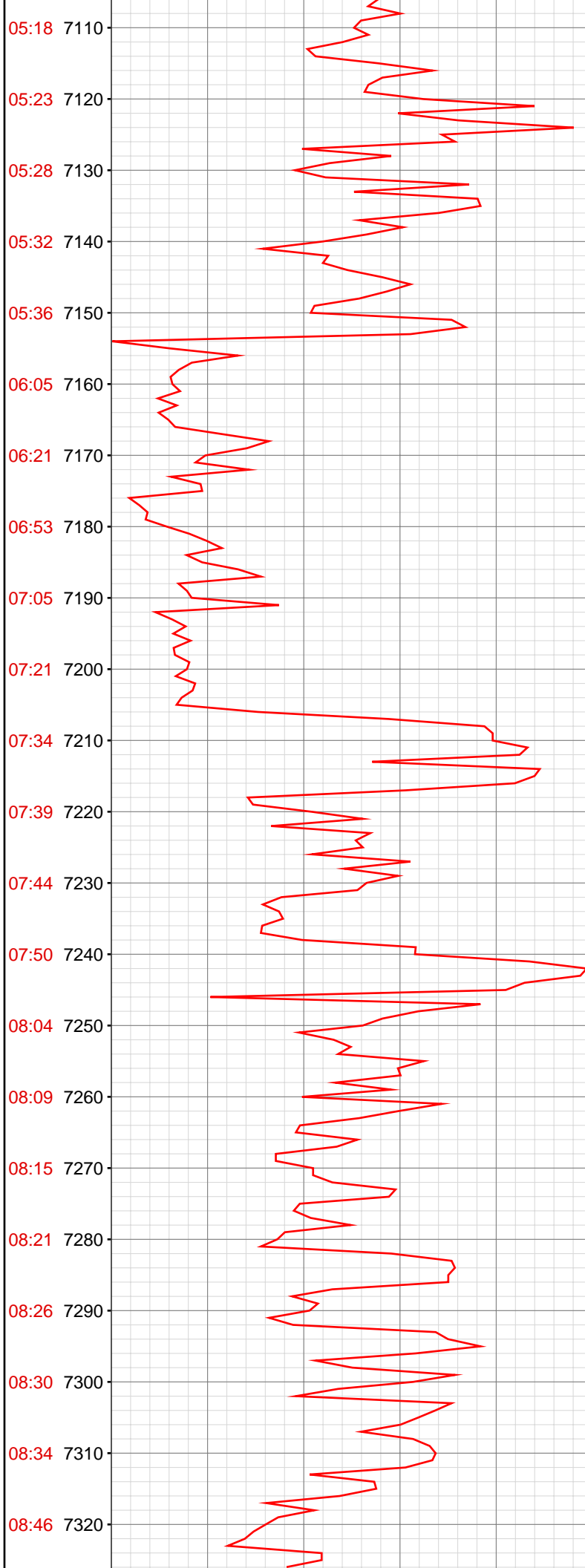
6959.15ft: MUD VIS 40.00  
6959.45ft: MUD WEIGHT 9.30  
6960.11ft: MUD PH 9.90  
  
6970.93ft: IN TALLY: HOLE DEPTH SET TO 6970.9  
6970.93ft: CIRCULATE OUT GAS  
6970.93ft: MUD VIS 38.00  
6970.93ft: MUD WEIGHT 9.40  
6970.93ft: MUD PH 9.70  
6970.93ft: Connection at 6970.9  
6970.93ft: SURVEY @ 6920' INC 0.8 AZ 96.5

7030.18ft: MUD VIS 40.00  
7030.61ft: MUD WEIGHT 9.40  
7031.07ft: MUD PH 9.60

7057.02ft: ZDiffPressure from SideKick sk-06-03-2616  
7062.60ft: IN TALLY: HOLE DEPTH SET TO 7062.7  
7062.66ft: CIRCULATE GAS OUT  
7062.66ft: Connection at 7062.7 SURVEY @ 7012' INC 1.5 AZ 105.3  
7066.11ft: MUD VIS 40.00  
7066.21ft: MUD WEIGHT 9.40  
7066.21ft: MUD PH 9.80

7074.97ft: ZDiffPressure from SideKick sk-06-03-2616  
7080.05ft: MUD VIS 40.00  
7080.05ft: MUD WEIGHT 9.40  
7080.05ft: MUD PH 9.70  
7080.05ft: ZDiffPressure from SideKick sk-06-03-2616

7091.73ft: ZDiffPressure from SideKick sk-06-03-2616



7153.61ft: IN TALLY: HOLE DEPTH SET TO 7154.5  
7154.46ft: Connection at 7154.5  
7154.46ft: SURVEY @ 7104' INC 0.9 AZ 96.6  
7154.46ft: ZDiffPressure from SideKick sk-06-03-2616  
7157.05ft: ZDiffPressure from SideKick sk-06-03-2616  
7158.04ft: ZDiffPressure from SideKick sk-06-03-2616

7175.20ft: MUD VIS 39.00  
7175.20ft: MUD WEIGHT 9.45  
7175.20ft: MUD PH 9.50  
7175.20ft: ZWOB from SideKick sk-06-03-2616  
7175.20ft: ZDiffPressure from SideKick sk-06-03-2616

7191.27ft: SLIDING

7205.02ft: ZWOB from SideKick sk-06-03-2616  
7205.02ft: ZDiffPressure from SideKick sk-06-03-2616

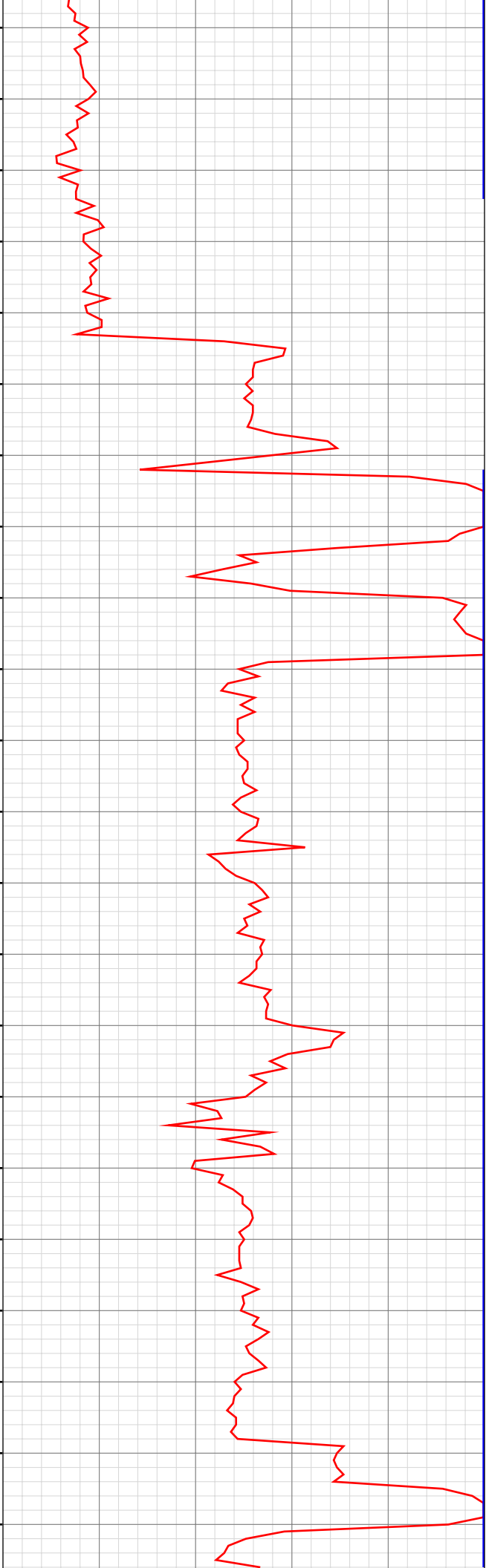
7245.57ft: IN TALLY: HOLE DEPTH SET TO 7245.8  
7245.80ft: Connection at 7245.8  
7245.80ft: ZWOB from SideKick sk-06-03-2616  
7245.80ft: ZDiffPressure from SideKick sk-06-03-2616  
7251.38ft: MUD VIS 39.00  
7251.74ft: MUD WEIGHT 9.45  
7252.00ft: MUD PH 9.80

7316.11ft: ZDiffPressure from SideKick sk-06-03-2616

08:53 7330  
09:14 7340  
09:41 7350  
09:56 7360  
10:16 7370  
10:30 7380  
10:35 7390  
10:39 7400  
10:43 7410  
10:48 7420  
11:06 7430  
11:12 7440  
11:16 7450  
11:22 7460  
11:27 7470  
11:32 7480  
11:35 7490  
11:37 7500  
11:40 7510  
11:44 7520  
12:09 7530  
12:23 7540

7337.27ft: IN TALLY: HOLE DEPTH SET TO 7337.3  
7337.34ft: Connection at 7337.3  
7337.34ft: SURVEY @ 7287 .6 AZI 333.2  
7337.57ft: ZWOB from SideKick sk-06-03-2616  
7337.57ft: ZDiffPressure from SideKick sk-06-03-2616  
7344.72ft: ZDiffPressure from SideKick sk-06-03-2616  
7346.36ft: SLIDING  
7348.39ft: MUD VIS 38.00  
7348.39ft: MUD WEIGHT 9.50  
7348.39ft: MUD PH 9.90  
7348.39ft: MUD WEIGHT 9.50  
  
7374.84ft: ZWOB from SideKick sk-06-03-2616  
7374.84ft: ZDiffPressure from SideKick sk-06-03-2616  
  
7399.15ft: MUD VIS 40.00  
7399.57ft: MUD WEIGHT 9.55  
7399.57ft: MUD PH 9.80  
7403.81ft: PUMP SWEEP  
  
7429.00ft: IN TALLY: HOLE DEPTH SET TO 7429.0  
7429.07ft: Connection at 7429.0  
7429.07ft: SURVEY @ 7379 INC .8 AZI 326.4 ROTATING  
7429.07ft: ZDiffPressure from SideKick sk-06-03-2616  
  
7477.49ft: PUMP SWEEP  
  
7520.47ft: SURVEY @ 7470 INC .8 AZI 64.8  
7520.64ft: IN TALLY: HOLE DEPTH SET TO 7520.5  
7520.70ft: ZWOB from SideKick sk-06-03-2616  
7520.70ft: ZDiffPressure from SideKick sk-06-03-2616  
7522.05ft: IN TALLY: HOLE DEPTH SET TO 7611.6  
7522.70ft: SLIDING Connection at 7520.5  
  
7538.32ft: MUD VIS 40.00  
7538.32ft: MUD WEIGHT 9.55  
7538.52ft: MUD PH 9.80

12:37 7550  
12:51 7560  
13:08 7570  
13:24 7580  
13:37 7590  
13:46 7600  
14:03 7610  
14:05 7620  
14:09 7630  
14:12 7640  
14:17 7650  
14:22 7660  
14:27 7670  
14:32 7680  
14:36 7690  
14:40 7700  
14:56 7710  
15:01 7720  
15:06 7730  
15:11 7740  
15:15 7750  
15:18 7760



7551.61ft: SLIDING

7592.75ft: ZDiffPressure from SideKick sk-06-03-2616  
7592.75ft: ZWOB from SideKick sk-06-03-2616  
7592.75ft: MUD VIS 40.00  
7592.75ft: MUD WEIGHT 9.55  
7592.75ft: MUD PH 9.70  
7592.75ft: MUD WEIGHT 9.55

7609.58ft: IN TALLY: HOLE DEPTH SET TO 7520.5  
7611.84ft: Connection at 7611.6  
7611.84ft: SURVEY @ 7561 INC .4 AZI 301.1  
7611.84ft: ZDiffPressure from SideKick sk-06-03-2616

7665.98ft: PUMP SWEEP

7703.25ft: Connection at 7703.2  
7703.25ft: SURVEY @ 7653 INC 1.3 AZI 288.0  
7703.25ft: ZDiffPressure from SideKick sk-06-03-2616  
7703.28ft: IN TALLY: HOLE DEPTH SET TO 7703.2

7751.35ft: PUMP SWEEP

