



Lat40°, Inc. 1635 Foxtrail Drive, Suite 325 Loveland, CO 970-776-3321






# LOCATION DRAWING

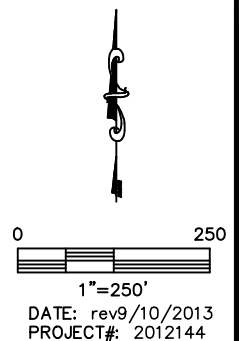
STATE ANTELOPE 34-24 PAD

SECTION: 24  
TOWNSHIP: 5N  
RANGE: 62W



## IMPROVEMENTS:

-  FIELD ROAD 435' S
-  FENCE 421' & 446' S, 567' E
-  GAS MARKERS 419' S, 463' & 556' SW, 465' & 580' SE
-  BARROW DITCH 425' & 445' S
-  LOW AREA 512' NE



NEAREST: BUILDING 5280'+, PUBLIC ROAD 5280'+,  
ABOVE GROUND UTILITY 5280'+, RAILROAD 5280'+, PROPERTY LINE 600' S