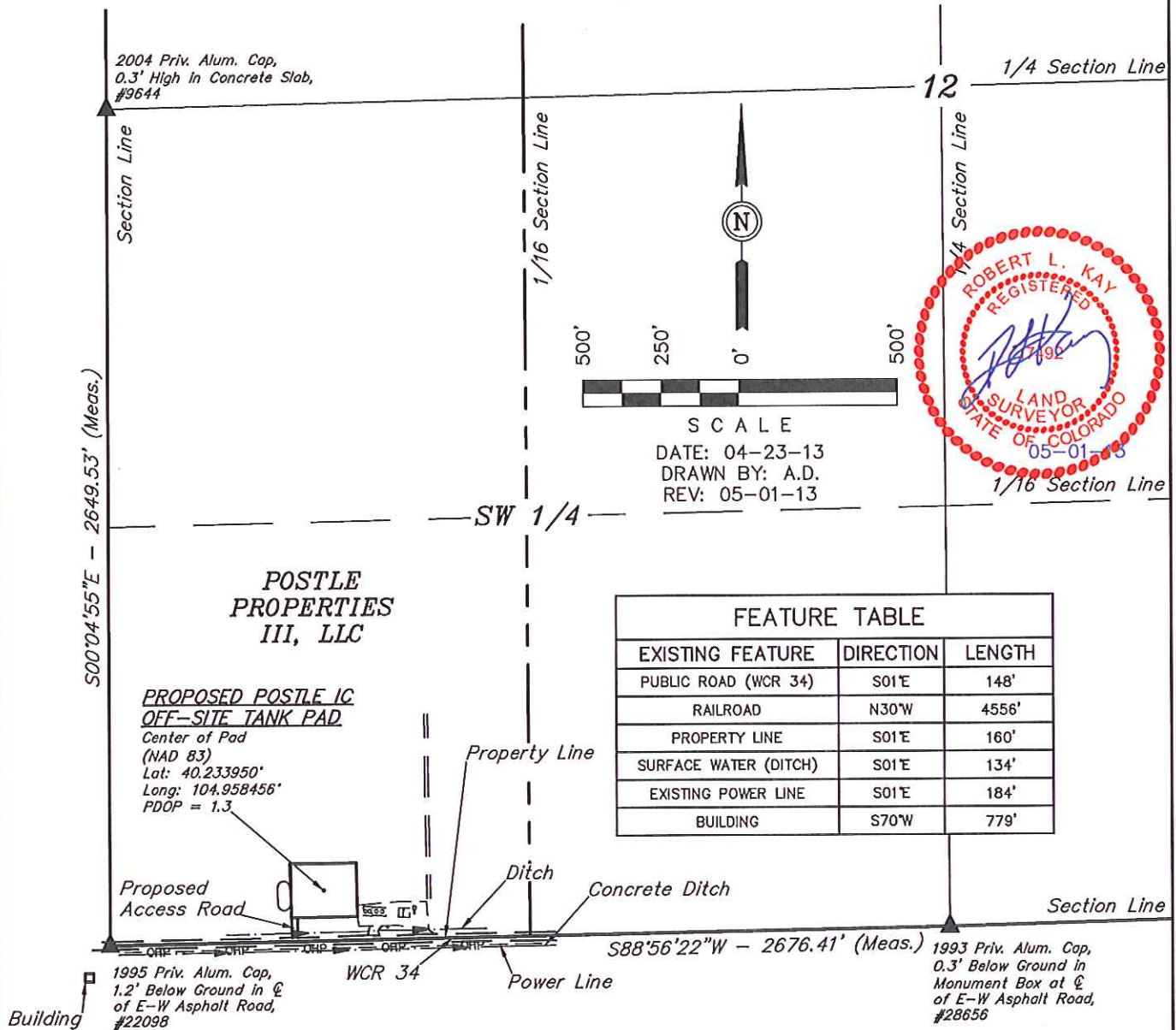


GREAT WESTERN OIL & GAS COMPANY

LOCATION DRAWING FOR

POSTLE IC OFF-SITE TANK PAD
SECTION 12, T3N, R68W, 6th P.M.
160' FSL 681' FWL

FIGURE #4



PLANT COMMUNITY

- ☐ DISTURBED GRASSLAND
- ☐ NATIVE GRASSLAND
- ☐ SHRUB LAND
- ☐ PLAINS RIPARIAN
- ☐ MOUNTAIN RIPARIAN
- ☐ FOREST LAND
- ☐ WETLANDS AQUATIC
- ☐ ALPINE
- ☐ OTHER (Describe): _____

CURRENT LAND USE

- CROP LAND: ☐ IRRIGATED ☐ DRY LAND ☐ IMPROVED PASTURE ☐ HAY MEADOW ☐ CRP
- NON-CROP LAND: ☐ RANGELAND ☐ TIMBER ☐ RECREATIONAL ☐ OTHER (Describe) _____
- SUBDIVIDED: ☐ INDUSTRIAL ☐ COMMERCIAL ☐ RESIDENTIAL _____

FUTURE LAND USE

- CROP LAND: ☐ IRRIGATED ☐ DRY LAND ☐ IMPROVED PASTURE ☐ HAY MEADOW ☐ CRP
- NON-CROP LAND: ☐ RANGELAND ☐ TIMBER ☐ RECREATIONAL ☐ OTHER (Describe) _____
- SUBDIVIDED: ☐ INDUSTRIAL ☐ COMMERCIAL ☐ RESIDENTIAL _____

UINTAH ENGINEERING & LAND SURVEYING
85 So. 200 East * Vernal, Utah 84078 * (435) 789-1017

GREAT WESTERN OIL & GAS COMPANY

LOCATION DRAWING DETAIL FOR
POSTLE IC OFF-SITE TANK PAD
SECTION 12, T3N, R68W, 6th P.M.
160' FSL 681' FWL

FIGURE #4A

SCALE: 1" = 200'
DATE: 04-23-13
DRAWN BY: A.D.
REV: 05-01-13

LINE TABLE			LINE TABLE		
LINE	DIRECTION	LENGTH	LINE	DIRECTION	LENGTH
L1	S01°E	134'	L7	S02°E	57'
L2	S01°E	148'	L8	S01°E	95'
L3	S01°E	184'	L9	S01°E	101'
L4	S01°E	192'	L10	N89°E	222'
L5	N89°E	329'	L11	S63°E	143'
L6	S02°E	46'			

