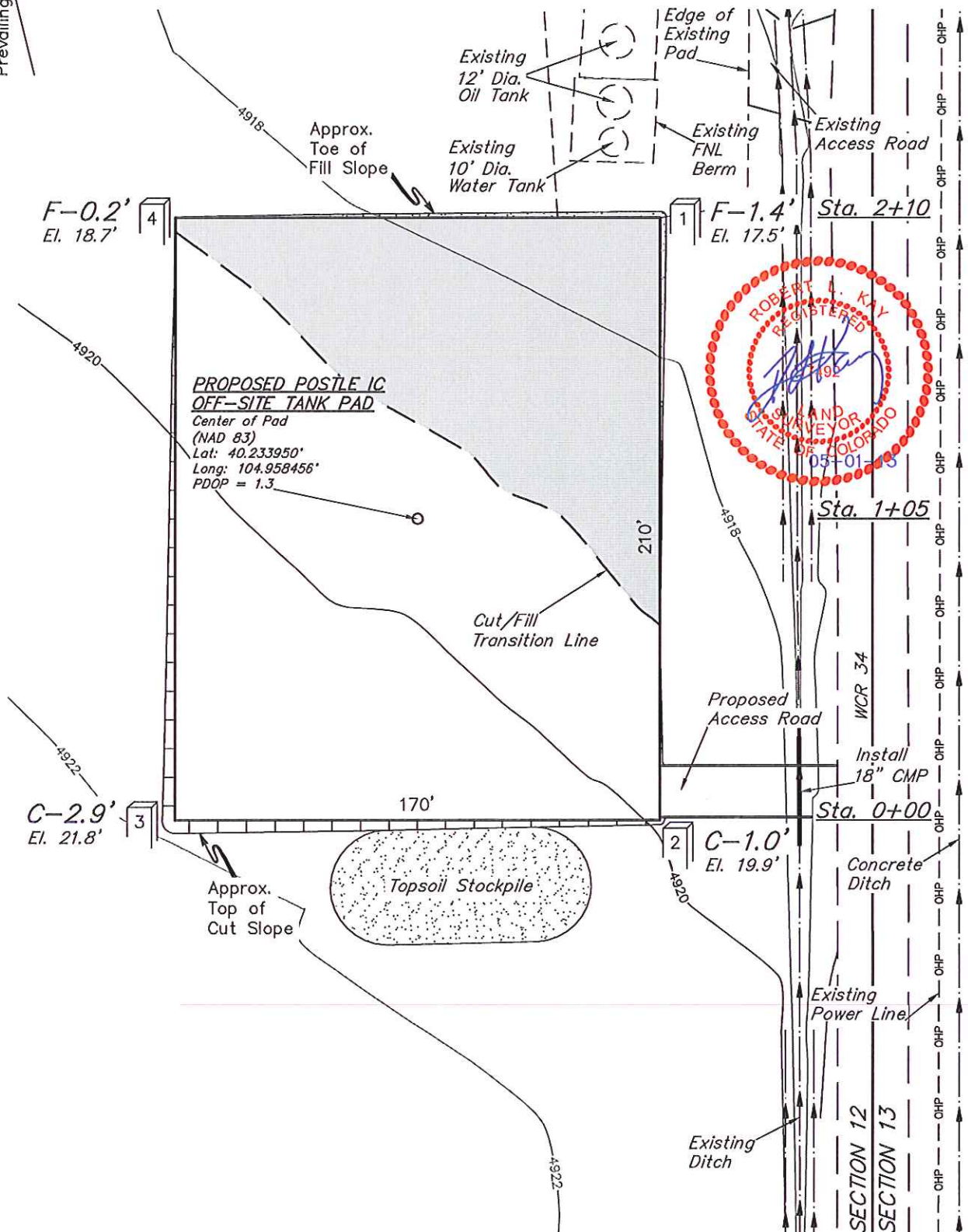
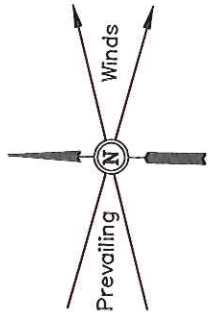


**GREAT WESTERN OIL & GAS COMPANY**  
**CONSTRUCTION LAYOUT FOR**  
**POSTLE IC OFF-SITE TANK PAD**  
**SECTION 12, T3N, R68W, 6th P.M.**  
**160' FSL 681' FWL**

**FIGURE #1**

SCALE: 1" = 50'  
 DATE: 04-23-13  
 DRAWN BY: A.D.  
 REV: 05-01-13



Elev. Ungraded Ground At Center of Tank Pad = 4919.4'  
 FINISHED GRADE ELEV. AT CENTER OF TANK PAD = 4918.9'

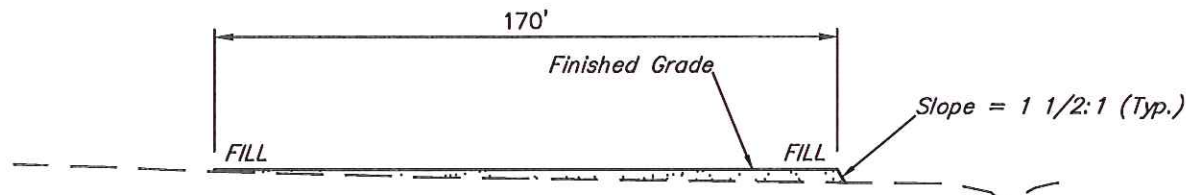
**UINTAH ENGINEERING & LAND SURVEYING**  
 85 So. 200 East \* Vernal, Utah 84078 \* (435) 789-1017

**GREAT WESTERN OIL & GAS COMPANY**  
**CONSTRUCTION LAYOUT CROSS SECTIONS FOR**  
**POSTLE IC OFF-SITE TANK PAD**  
**SECTION 12, T3N, R68W, 6th P.M.**  
**160' FSL 681' FWL**

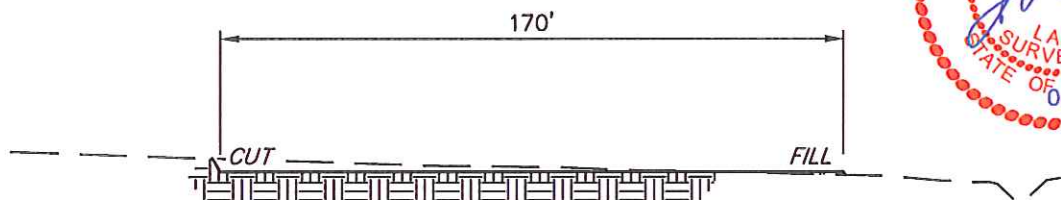
**FIGURE #2**

1" = 20'  
X-Section  
Scale  
1" = 50'

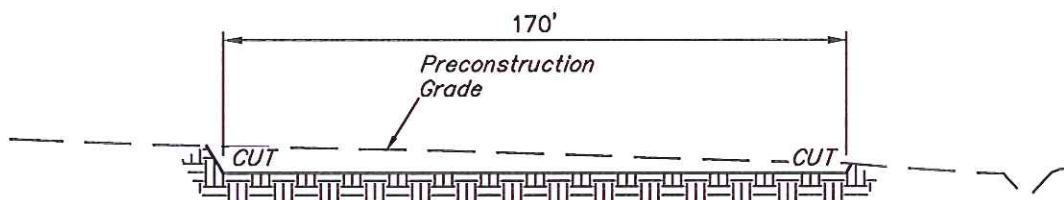
DATE: 04-23-13  
DRAWN BY: A.D.  
REV: 05-01-13



STA. 2+10



STA. 1+05



STA. 0+00



**NOTE:**

Topsail should not be Stripped Below Finished Grade on Substructure Area.

**APPROXIMATE ACREAGE**

OFF-SITE TANK PAD DISTURBANCE = ± 0.929 ACRES  
ACCESS ROAD DISTURBANCE = ± 0.043 ACRES  
TOTAL = ± 0.972 ACRES

\* NOTE:  
FILL QUANTITY INCLUDES 5% FOR COMPACTION

**APPROXIMATE YARDAGES**

(6") Topsoil Stripping = 690 Cu. Yds.  
Remaining Location = 570 Cu. Yds.  
TOTAL CUT = 1,260 CU. YDS.  
FILL = 570 CU. YDS.

EXCESS MATERIAL = 690 Cu. Yds.  
Topsoil = 690 Cu. Yds.

EXCESS UNBALANCE = 0 Cu. Yds.  
(After Interim Rehabilitation)

**UINTAH ENGINEERING & LAND SURVEYING**  
85 So. 200 East \* Vernal, Utah 84078 \* (435) 789-1017