

LEGEND:

PROPOSED LOCATION

GREAT WESTERN OIL & GAS COMPANY

**POSTLE IC OFF-SITE TANK PAD
SECTION 12, T3N, R68W, 6th P.M.
160' FSL 681' FWL**



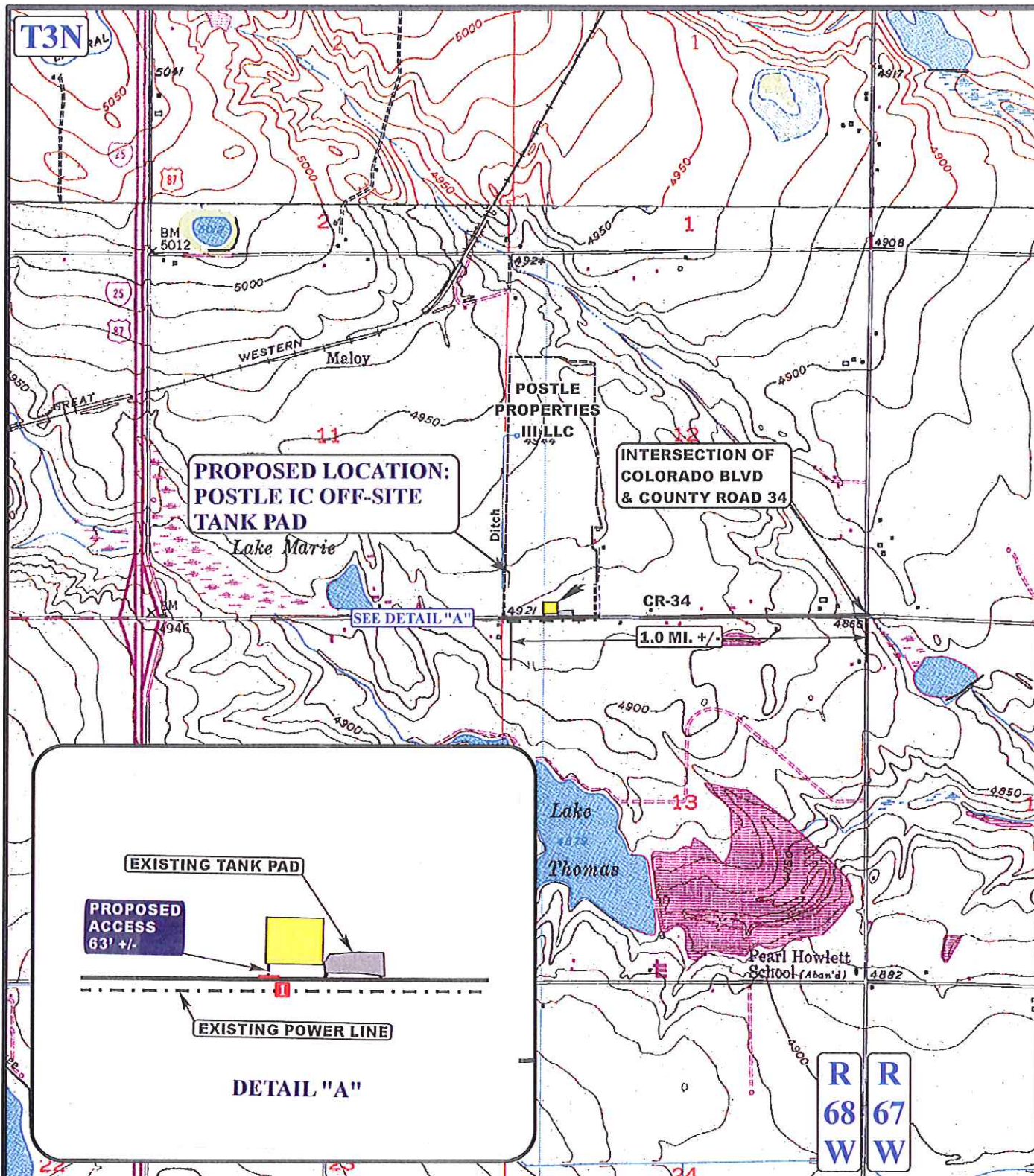
Uintah Engineering & Land Surveying
85 South 200 East Vernal, Utah 84078
(435) 789-1017 * FAX (435) 789-1813

**ACCESS ROAD
MAP**

04 23 13
MONTH DAY YEAR

SCALE: 1:100,000 | DRAWN BY: J.L.H. | REVISED: 08-14-13





LEGEND:

- EXISTING ROADS
- PROPOSED ACCESS ROAD
- 24" CMP REQUIRED

GREAT WESTERN OIL & GAS COMPANY

**POSTLE IC OFF-SITE TANK PAD
SECTION 12, T3N, R68W, 6th P.M.
160' FSL 681' FWL**



Uintah Engineering & Land Surveying
85 South 200 East Vernal, Utah 84078
(435) 789-1017 * FAX (435) 789-1813

**ACCESS ROAD
MAP**

04 23 13
MONTH DAY YEAR

SCALE: 1"=2000' DRAWN BY: J.L.H. REVISED: 08-14-13

**B
TOPO**