

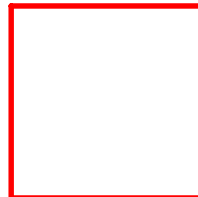
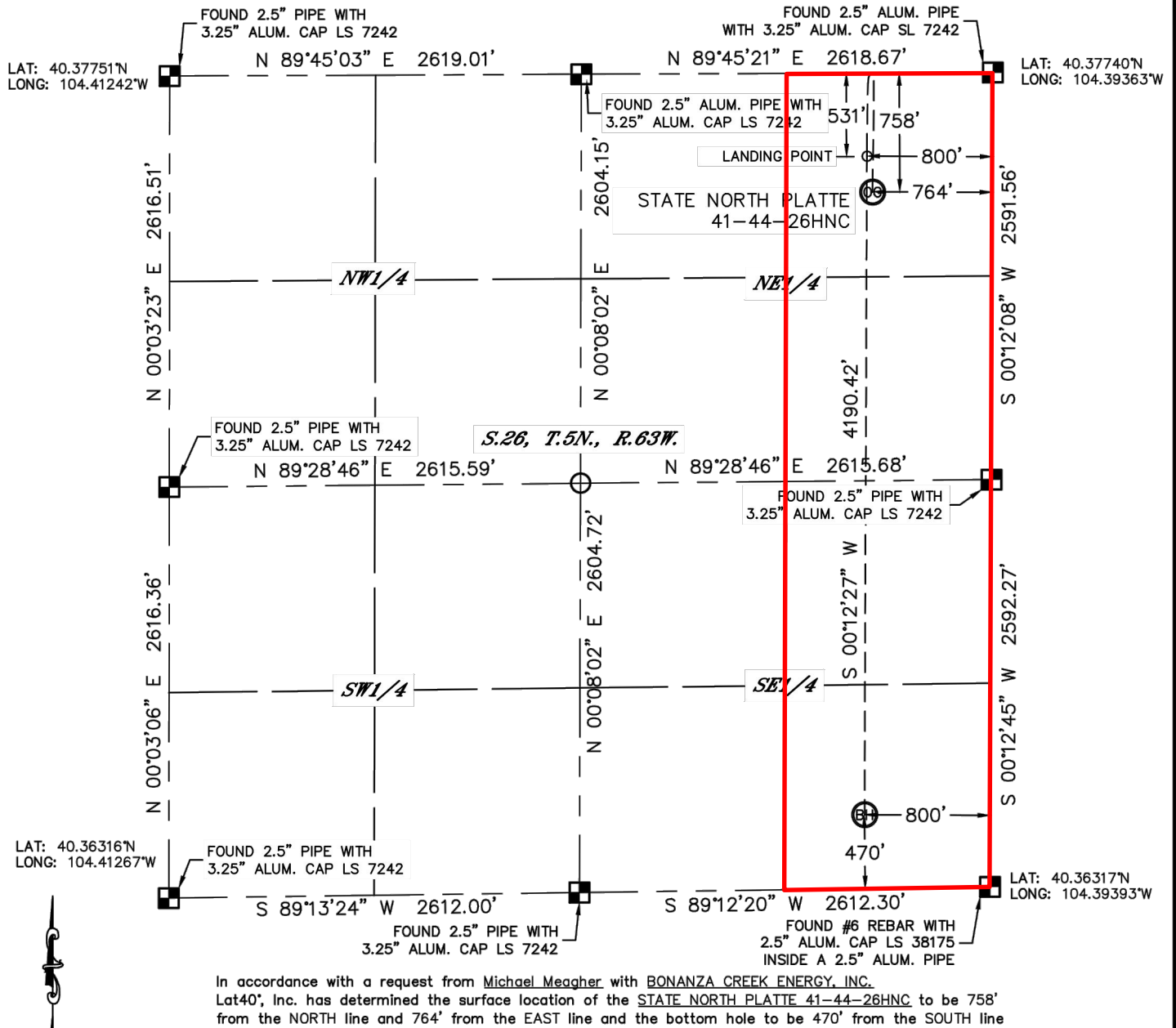


Lat40°, Inc. 1635 Foxtrail Drive, Suite 325 Loveland, CO 970-776-3321

WELL LOCATION CERTIFICATE

THIS MAP DOES NOT REPRESENT A BOUNDARY SURVEY

SECTION: 26
TOWNSHIP: 5N
RANGE: 63W



Wellbore Spacing Unit Outline



Wellbore Spacing Unit Map

09 September 2013 ksc

State North Platte 41-44-26HNC
E/2 E/2 Sec 26-T5N-R63W 6th PM
Weld County, Colorado