

Company: Omimex Petroleum Inc.

Well: Bledsoe 12-6-5-44

Field: Ballyneal

County: Yuma State: Colorado

Platform Express

Triple Combo

Linear

County: Yuma
Field: Ballyneal
Location: Sec. 6, Twp. 5N, Rng. 44W
Well: Bledsoe 12-6-5-44
Company: Omimex Petroleum Inc.

| Location: | | Elev. | | K.B. | |
|-----------------------------------|----------|----------------------|--|------------------|--|
| Sec. 6, Twp. 5N, Rng. 44W | | FSL 1981' x FWL 861' | | G.L. | |
| Lat: 40.430400, Long: -102.317290 | | D.F. | | 3758.50 ft | |
| Permanent Datum: | | Ground Level | | Elev.: 3753.50 f | |
| Log Measured From: | | Kelly Bushing | | 6.00 ft | |
| Drilling Measured From: | | Kelly Bushing | | above Perm.Datum | |
| API Serial No. | Section: | Township: | | Range: | |
| 05-125-11965-0000 | 6 | 5N | | 44W | |

Logging Date 27-Jan-2013

Run Number Run 1

Depth Driller 2637.00 ft

Schlumberger Depth 2632.00 ft

Bottom Log Interval 2632.00 ft

Top Log Interval

Casing Driller Size @ Depth 7 in @ 462.00 ft

Casing Schlumberger 462 ft

Bit Size 6.25 in

Type Fluid In Hole Fresh Water

Density 8.6 lbm/gal

Fluid Loss PH 32 s

MUD

RM @ Meas Temp 0.19 ohm.m @ 74.6 degF

RMF @ Meas Temp 0.14 ohm.m @ 74.6 degF

RMC @ Meas Temp 0.24 ohm.m @ 74.6 degF

Source RMF RMC Calculated

RM @ BHT RMF @ BHT 0.07 @ 212 0.05 @ 212

Max Recorded Temperatures

Circulation Stopped 28-Jan-2013 11:15:00

Logger on Bottom Time

Unit Number 3030 Location: Fort Morgan, CO

Recorded By Arvin Shi/Max Pace

Witnessed By Paul

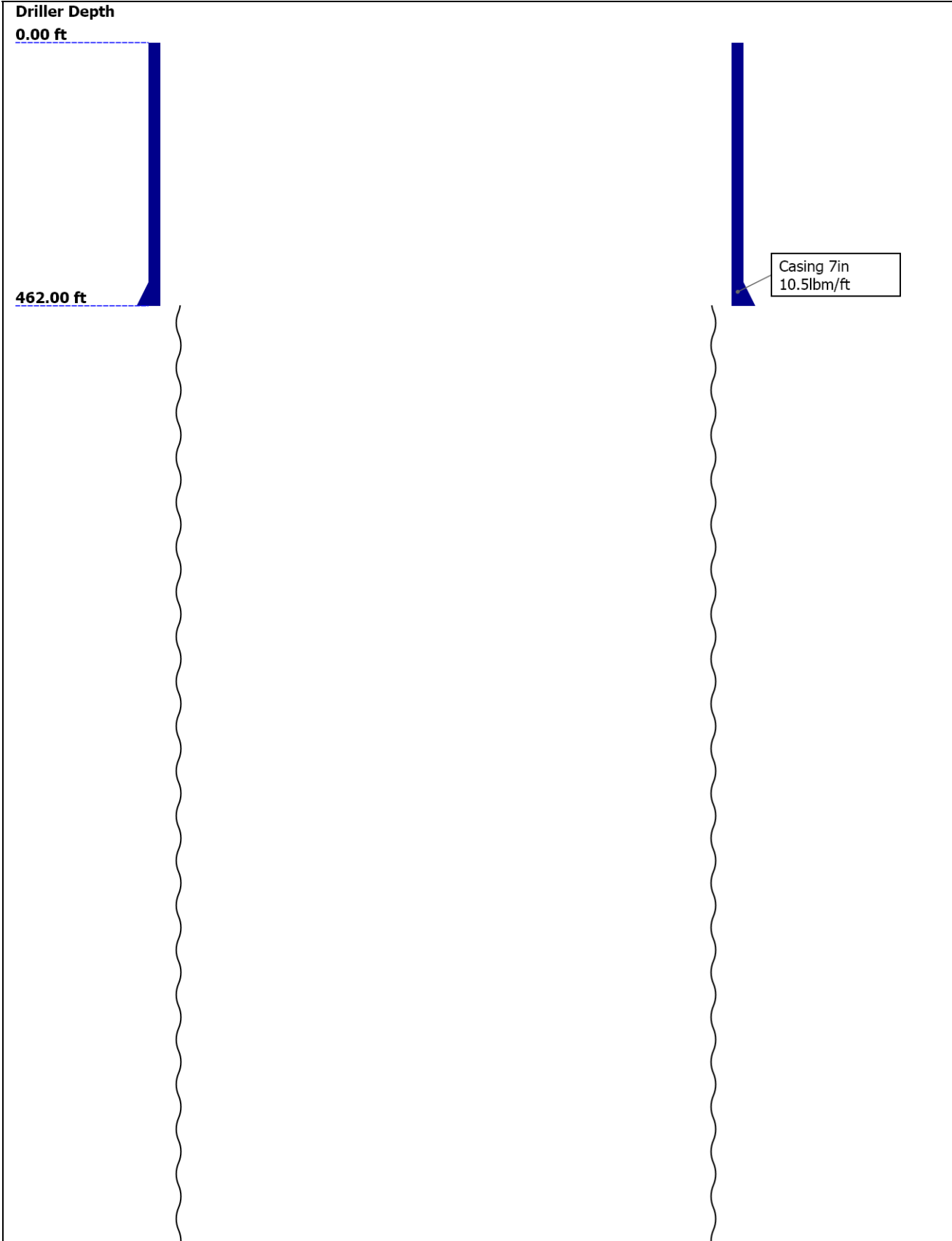
Disclaimer

THE USE OF AND RELIANCE UPON THIS RECORDED-DATA BY THE HEREIN NAMED COMPANY (AND ANY OF ITS AFFILIATES, PARTNERS, REPRESENTATIVES, AGENTS, CONSULTANTS AND EMPLOYEES) IS SUBJECT TO THE TERMS AND CONDITIONS AGREED UPON BETWEEN SCHLUMBERGER AND THE COMPANY, INCLUDING: (a) RESTRICTIONS ON USE OF THE RECORDED-DATA; (b) DISCLAIMERS AND WAIVERS OF WARRANTIES AND REPRESENTATIONS REGARDING COMPANY'S USE AND RELIANCE UPON THE RECORDED-DATA; AND (c) CUSTOMER'S FULL AND SOLE RESPONSIBILITY FOR ANY INFERENCE DRAWN OR DECISION MADE IN CONNECTION WITH THE USE OF THIS RECORDED-DATA.

Contents

1. Header
2. Disclaimer
3. Contents
4. Well Sketch
5. Borehole Size/Casing/Tubing Record
6. Run 1 5" Triple Combo
 - 6.1 Integration Summary
 - 6.2 Software Version
 - 6.3 Composite Summary
 - 6.4 Log (EMD 5in Triple Combo)
 - 6.5 Parameter Listing
7. Tail

Well Sketch





Borehole Size/Casing/Tubing Record

| | | | | | | |
|-----------------------|------|--|--|--|--|--|
| Bit | | | | | | |
| Bit Size (in) | 6.25 | | | | | |
| Top Driller (ft) | 462 | | | | | |
| Top Logger (ft) | 462 | | | | | |
| Bottom Driller (ft) | 2637 | | | | | |
| Bottom Logger (ft) | 2632 | | | | | |
| Casing | | | | | | |
| Size (in) | 7 | | | | | |
| Weight (lbm/ft) | 10.5 | | | | | |
| Inner Diameter (in) | 6.72 | | | | | |
| Top Driller (ft) | 0 | | | | | |
| Top Logger (ft) | 0 | | | | | |
| Bottom Driller (ft) | 462 | | | | | |
| Bottom Logger (ft) | 462 | | | | | |

Run 1

5" Triple Combo

Integration Summary

| Output Channel(s) | Output Description | Input Parameter | Output Value | Unit |
|-------------------|--------------------|-----------------|--------------|------|
|-------------------|--------------------|-----------------|--------------|------|

Software Version

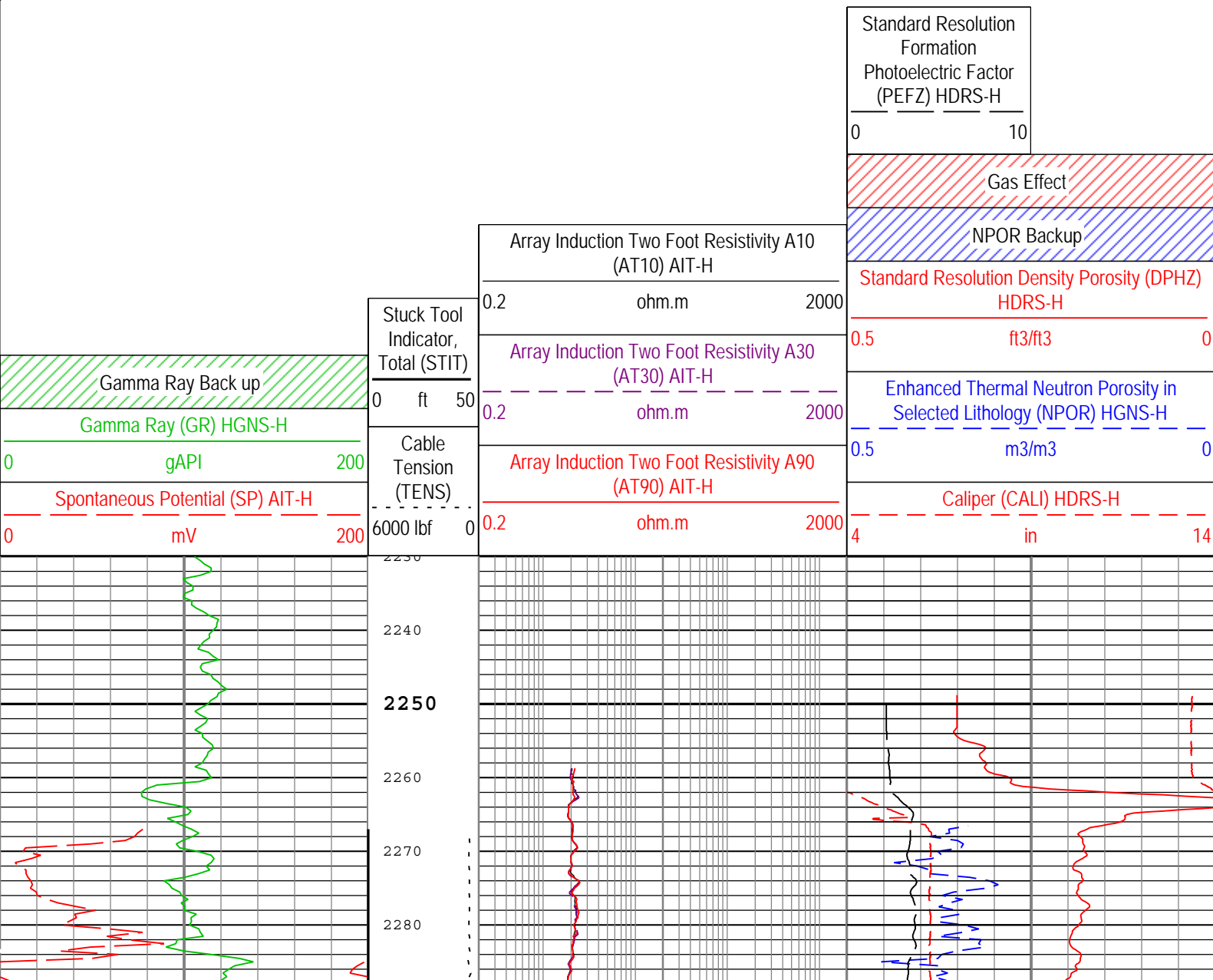
| Acquisition System | Version |
|--------------------|--------------------------------|
| MaxWell | 3.1.9755.0 |
| Application Patch | SP-20120723-3.1.9755.1112 |
| | EXP_APL-MASTAXIS-3.1.9755.1221 |

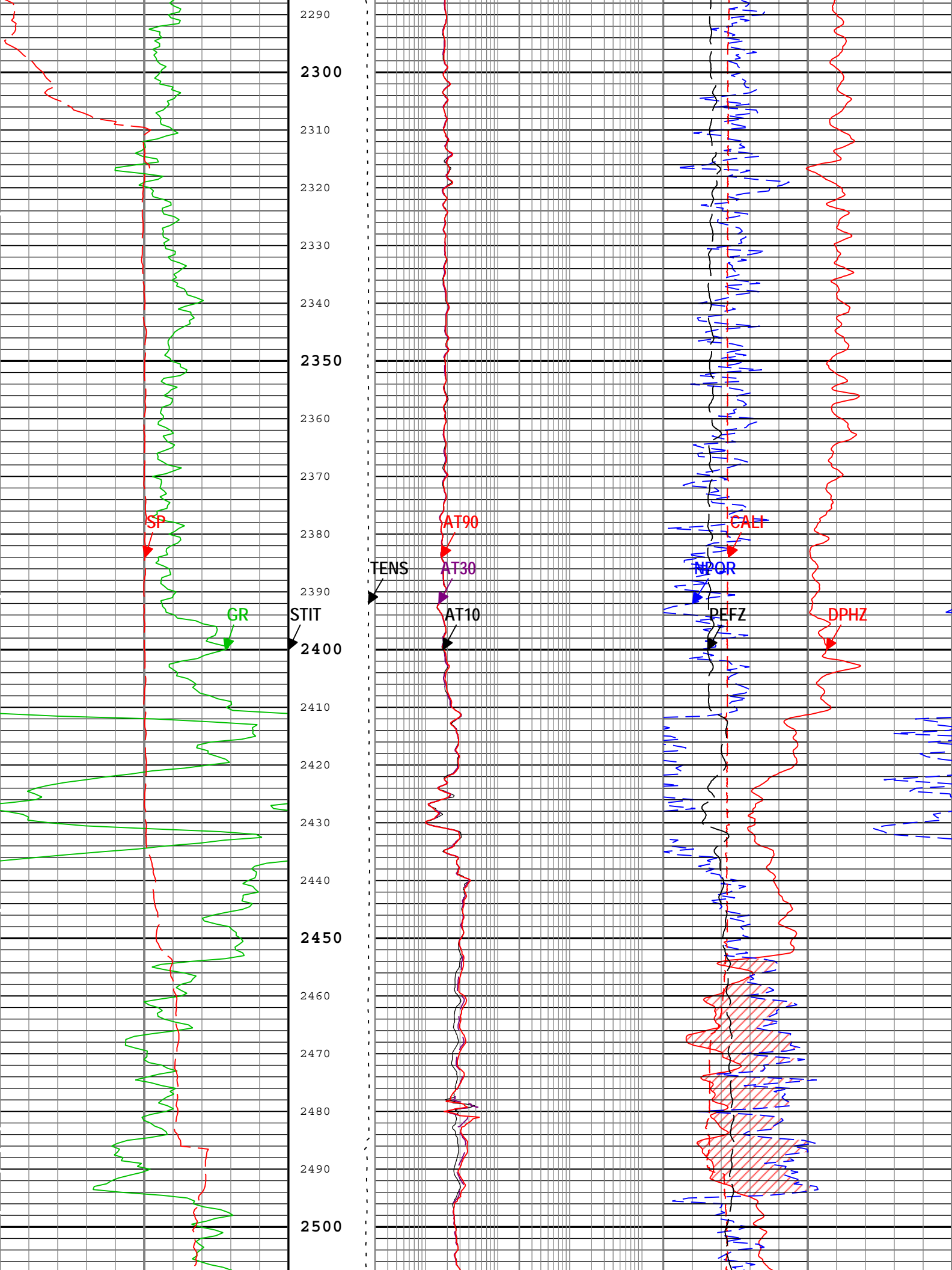
| Computation | Description | Version |
|-----------------|---|------------|
| HENVIR | Computation Ensemble for the HGNS Neutron environmental corrections | 3.1.9755.0 |
| DepthCorrection | DepthCorrection | 3.1.9755.0 |

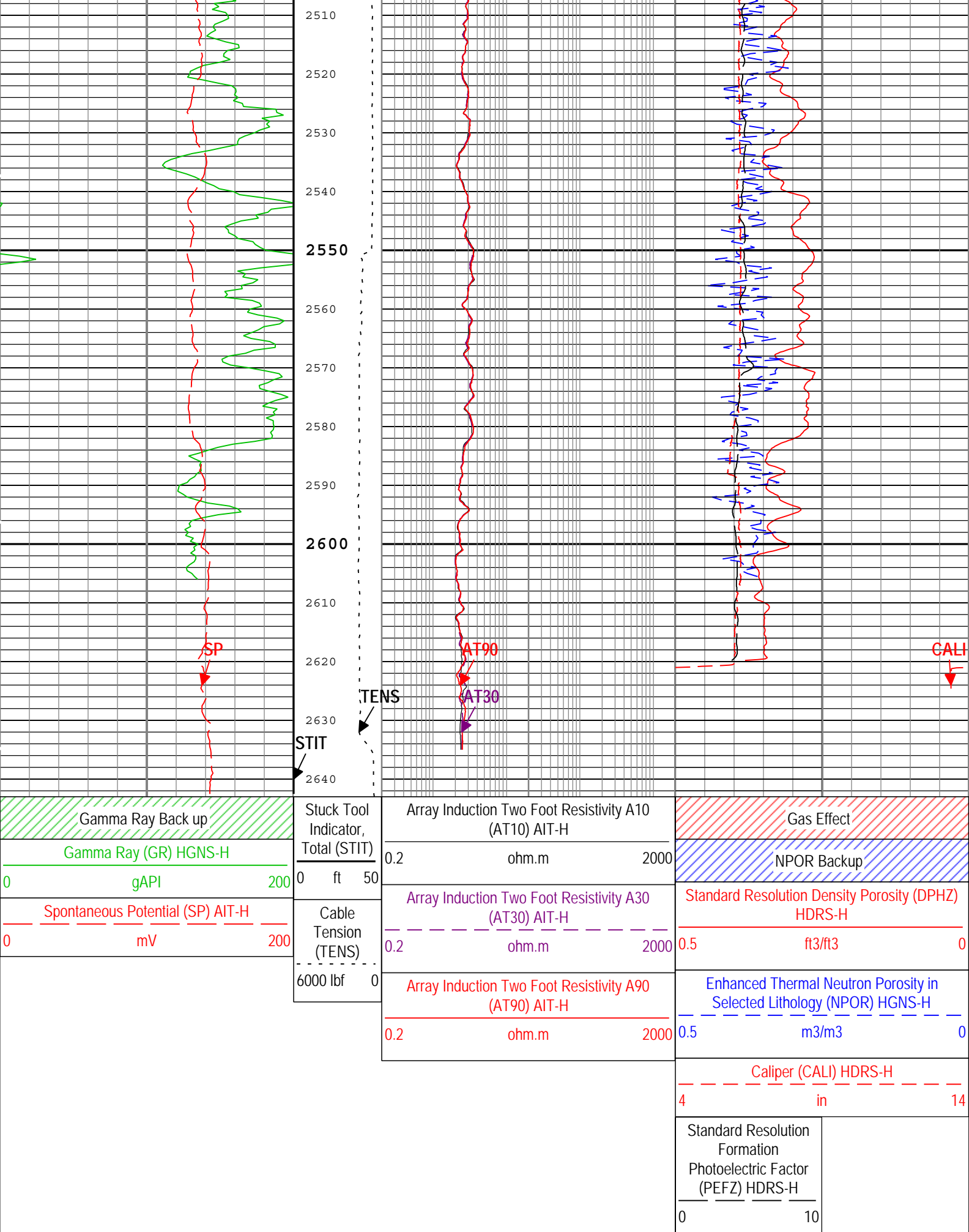
| Tool Elements | Description | Software Version | Firmware Version |
|---------------|---|------------------|------------------|
| HRCC-H | HILT High-Resolution Control Cartridge, 150 degC | 3.1.9755.0 | 2.0 |
| HGNS-H | HILT Gamma-Ray and Neutron Sonde, 150 degC | 3.1.9755.0 | 2.0 |
| AHIS | Array Induction Sonde - H | 3.1.9755.1112 | |
| HRGD-H | HILT Resistivity Gamma-Ray Density Device, 150 degC | 3.1.9755.0 | 3.0 |

Pass Summary

| Run Name | Pass Objective | Direction | Top | Bottom | Start | Stop | Depth Shift | Include Parallel |
|----------|----------------|-----------|-----|--------|-------|------|-------------|------------------|
|----------|----------------|-----------|-----|--------|-------|------|-------------|------------------|








| Channel Processing Parameters | | | | |
|-------------------------------|--|-----------|------------------|---------|
| Parameter | Description | Tool | Value | Unit |
| ABHM | Array Induction Borehole Correction Mode | AIT-H | Compute Standoff | |
| ABLM | Array Induction Basic Logs Mode | AIT-H | Normal | |
| ACDE | Array Induction Casing Detection Enable | AIT-H | Yes | |
| ASTA | Array Induction Tool Standoff | AIT-H | 0.625 | in |
| BARI | Barite Mud Presence Flag | Borehole | No | |
| BHS | Borehole Status (Open or Cased Hole) | Borehole | Open | |
| BS | Bit Size | WLSESSION | 6.25 | in |
| BSAL | Borehole Salinity | Borehole | 33770.04 | ppm |
| CALI_SHIFT | CALI Supplementary Offset | HDRS-H | 0 | in |
| CBLO | Casing Bottom (Logger) | WLSESSION | 462 | ft |
| CDEN | Cement Density | HGNS-H | 2 | g/cm3 |
| DFD | Drilling Fluid Density | Borehole | 8.6 | lbm/gal |
| DFT | Drilling Fluid Type | Borehole | Water | |
| DFT_WATER | Drilling Fluid Water Type | Borehole | Fresh Water | |
| DHC | Density Hole Correction | HDRS-H | Bit Size | |
| FD | Fluid Density | Borehole | 1 | g/cm3 |
| FSAL | Formation Salinity | Borehole | 0 | ppm |
| GCSE_DOWN_PASS | Generalized Caliper Selection for WL Log Down Passes | Borehole | BS | |
| GCSE_UP_PASS | Generalized Caliper Selection for WL Log Up Passes | Borehole | CALI | |
| GRSE | Generalized Mud Resistivity Selection, from Measured or Computed Mud Resistivity | Borehole | AMF | |
| GTSE | Generalized Temperature Selection, from Measured or Computed Temperature | Borehole | CTEM | |
| HSCO | Hole Size Correction Option | HGNS-H | Yes | |
| MATR | Rock Matrix for Neutron Porosity Corrections | Borehole | LIMESTONE | |
| MDEN | Matrix Density for Density Porosity | Borehole | 2.71 | g/cm3 |
| MFST | Mud Filtrate Sample Temperature | Borehole | 74.6 | degF |
| RMFS | Resistivity of Mud Filtrate Sample | Borehole | 0.14 | ohm.m |
| SOCO | Standoff Correction Option | HGNS-H | Yes | |
| SPDR | SP Drift Per Foot | AIT-H | 0 | mV/ft |
| TD | Total Measured Depth | Borehole | 2637 | ft |

| Tool Control Parameters | | | | |
|-------------------------|----------------------------------|-----------|----------|------|
| Parameter | Description | Tool | Value | Unit |
| HMCA_BRD_TYPE | HMCA Board Type | HGNS-H | 1 | |
| HRGD_BRD_TYPE | HRGD Board Type | HDRS-H | WITH_HET | |
| MAX_LOG_SPEED | Toolstring Maximum Logging Speed | WLSESSION | 3600 | ft/h |

| | | |
|----------|-----------------------|---|
| Company: | Omimex Petroleum Inc. |  |
| Well: | Bledsoe 12-6-5-44 | |
| Field: | Ballyneal | |
| County: | Yuma | |
| State: | Colorado | |

Platform Express

Triple Combo

Linear