



Plan Data for FARLEY 30N-23HZ
Field: WATTENBERG_ANADARKO_NAD 83
 Map Unit: USFT Vertical Reference Datum (VRD): Mean Sea Level
 Projected Coordinate System: NAD83 / Colorado North (ftUS)

Slot: FARLEY 30N-23HZ
 Position:
 Offset is from Site centre
 +N/-S: 0.00USft Northing: 1318380.39USft Latitude: 40.204931°
 +E/-W: -0.00USft Easting: 3208978.84USft Longitude: -104.751799°
 Elevation Above VRD: 4939.00USft

Plan Point Information:
 DogLeg Severity Unit: °/100.00ft Position offsets from Slot centre

MD	Inc	Az	TVD	+N/-S	+E/-W	VSec	DLS	Toolface
(USft)	(°)	(°)	(USft)	(USft)	(USft)	(USft)	(DLSU)	(°)
909.00	0.18	348.08	909.00	0.75	-1.26	0.75	0.06	31.5R
1194.00	0.18	348.08	1193.99	1.63	-1.44	1.63	0.00	0.0R
1998.82	16.00	224.32	1988.46	-76.99	-79.69	-76.90	2.00	124.3L
3670.67	16.00	224.32	3595.58	-406.62	-401.54	-406.13	0.00	0.0R
4470.45	0.00	0.00	4385.02	-485.99	-479.03	-485.40	2.00	180.0R
6674.49	0.00	0.00	6589.06	-485.99	-479.03	-485.40	0.00	0.0R
7571.73	89.72	359.93	7162.01	84.21	-479.70	84.79	10.00	0.1L
11717.65	89.72	359.93	7182.01	4230.08	-484.55	4230.67	0.00	0.0R

Plan Data for FARLEY 30N-23HZ

Formation Point Information:

Name	TVD Elevation	MD
(USft)	(USft)	(USft)
FOX HILLS BASE	699.00	4256.00
PARKMAN	4031.00	924.00
SUSSEX	4455.00	500.00
SHARON SPRINGS	7036.00	-2081.00
NIOBRARA A	7104.00	-2149.00
NIOBRARA B	7152.00	-2197.00

Casing Point Information:

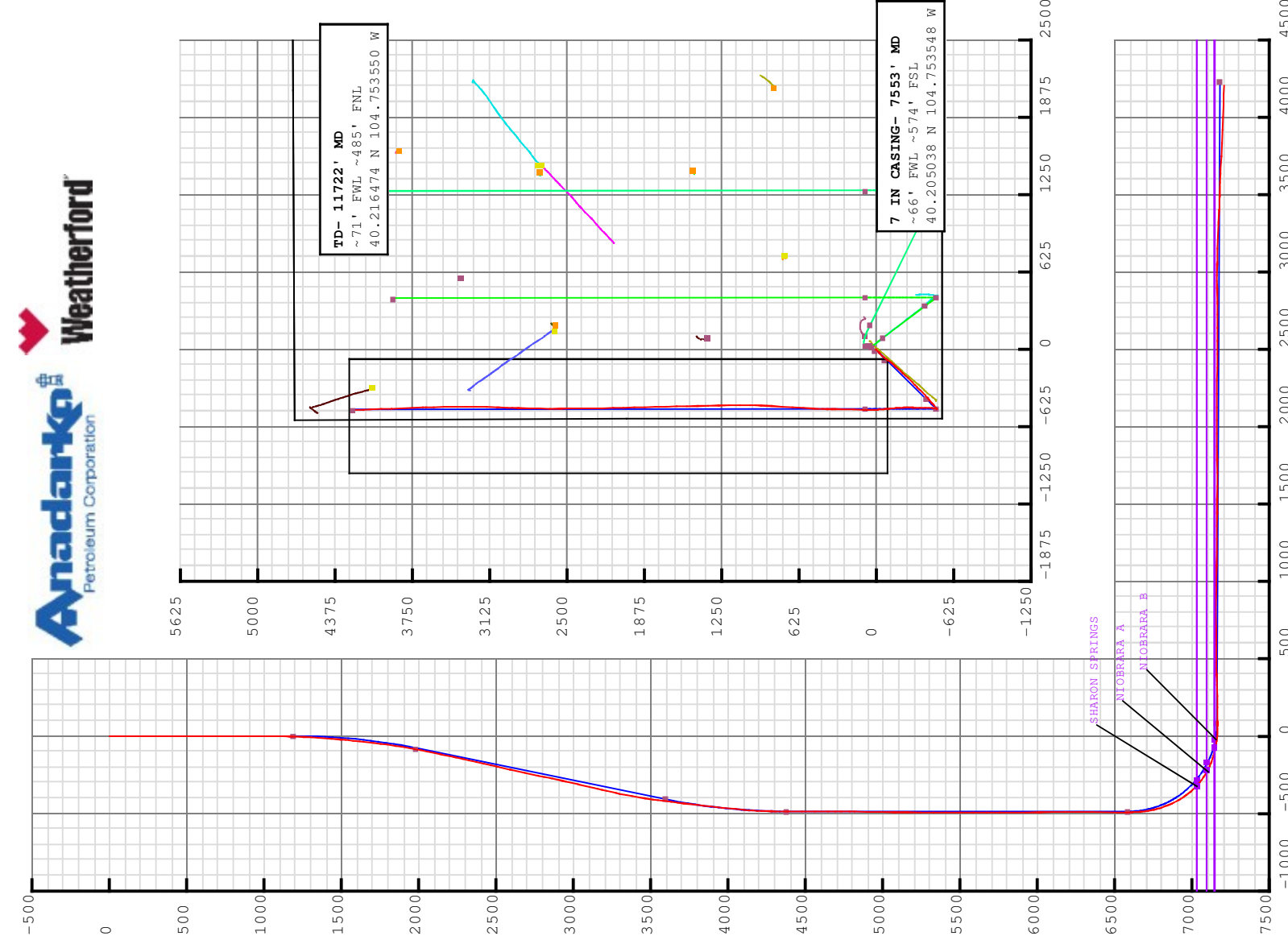
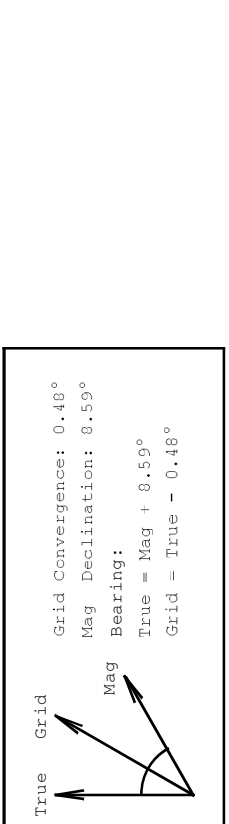
Name	MD	TVD
(USft)	(USft)	(USft)
9 5/8 in	981.00	981.00
7 in	7571.73	7162.01

INNER TOP - 6574.49' MD
 KOP - 6674.49' MD

Plan Data for FARLEY 30N-23HZ

Target Set Information:

Name	TVD	Lat	Long	Shape
(USft)	(°)	(°)	(°)	
PBHL 7182.00	40.216543	-104.753534	Cuboid	





FINAL SURVEYS





5D Survey Report

Anadarko Petroleum

Field Name: WATTENBERG_ANADARKO_NAD 83
Site Name: FARLEY 13-23HZ
Well Name: FARLEY 30N-23HZ
Survey: Definitive Survey



Weatherford®



Surveys for the FARLEY 30N-23HZ

Site Name FARLEY 13-23HZ	Units : US ft North Reference : True Northing : 1318380.39 US ft Easting : 3208978.84 US ft Convergence Angle : 0.48 Latitude : 40.204931 Longitude : -104.751799 Position Elevation above: 4939.00 US ft Comment :
------------------------------------	--

Slot Name FARLEY 30N-23HZ	Position (Offsets relative to Site Centre) Northing : 1318380.39 US ft Easting : 3208978.84 US ft Latitude : 40.204931 Longitude : -104.751799 Slot TVD Reference : Ground Elevation Elevation above : 4939.00 US ft Comment :
-------------------------------------	---

Well Name FARLEY 30N-23HZ	Type : Main well Rig Height <i>Drill Floor</i> : 16.00 US ft Relative to : 4955.00 US ft Closure Distance : 4233.24 US ft Vertical Section (Position of Origin Relative to Slot) +N / -S : 0.00 US ft +E / -W : 0.00 US ft Az : 359.93° UWI : Comment : Closure Azimuth : 353.368°
-------------------------------------	--

5D Survey Report

Target Set

Name : 1 **Number of Targets :** 1

Comment :

TargetName: PBHL	Position (Relative to centre) Latitude : 40°12'59.554800" Longitude : -104°45'12.722400"
Shape: Cuboid	Northing : 1322606.22 US ft Easting : 3208458.64US ft
	TVD (Drill Floor) : 7182.00 US ft
Orientation Dimensions	Azimuth : 0.00° Length : 1.00 US ft
	Inclination : 0.00° Breadth : 1.00 US ft
	Height : 1.00 US ft

Survey Name : Definitive Survey **Survey Tool :** **Company :**

Date : 01/Jul/2013 **Comment :**

Magnetic Model

Model Name: BGGM **Date:** 13/Jul/2013 **Field Strength:** 52782.9 nT **Declination:** 8.59° **Dip:** 66.81°

Survey Tool Ranges

Name **Start MD (us ft)** **End MD (us ft)** **Source Survey**

NSG Static GMS	0.00	909.00	909.00	WFT MWD SURVEYS
MWD	909.00	11722.00	11722.00	

Casing Points (Relative to centre, TVD relative to Drill Floor)

Name	MD (US ft)	Inc (°)	Az (°)	TVD (US ft)	N.Offset (US ft)	E.Offset (US ft)	Latitude (°)	Longitude (°)
7 in	7553.00	87.82	359.25	7164.98	38.95	-488.38	40.205038	-104.753548

Well path created using minimum curvature

Survey Points (Relative to centre, TVD relative to Drill Floor)

MD (US ft)	Inc (°)	Az (°)	TVD (US ft)	N.Offset (US ft)	E.Offset (US ft)	Northing (US ft)	Easting (US ft)	Latitude (°)	Longitude (°)	VS (US ft)	Comment
0.00	0.00	0.00	0.00	0.00	0.00	1318380.39	3208978.84	40.204931	-104.751799	0.00	2
16.00	0.00	0.00	16.00	0.00	0.00	1318380.39	3208978.84	40.204931	-104.751799	0.00	
116.00	0.33	312.13	116.00	0.19	-0.21	1318380.58	3208978.62	40.204932	-104.751800	0.19	
216.00	0.27	264.90	216.00	0.37	-0.66	1318380.75	3208978.18	40.204932	-104.751801	0.37	
316.00	0.26	226.20	316.00	0.19	-1.06	1318380.57	3208977.78	40.204932	-104.751803	0.19	
416.00	0.10	142.60	416.00	-0.04	-1.17	1318380.34	3208977.67	40.204931	-104.751803	-0.04	
516.00	0.18	342.55	516.00	0.04	-1.17	1318380.42	3208977.67	40.204931	-104.751803	0.04	
616.00	0.15	39.39	616.00	0.29	-1.13	1318380.67	3208977.71	40.204932	-104.751803	0.29	

5D Survey Report

Survey Points (Relative to centre, TVD relative to Drill Floor)												
VD (US ft)	Inc (°)	Az (°)	TVD (US ft)	N.Offset (US ft)	E.Offset (US ft)	Northing (US ft)	Easting (US ft)	Latitude (°)	Longitude (°)	V.S. (US ft)	Comment	
716.00	0.06	276.23	716.00	0.40	-1.10	1318380.78	3208977.74	40.204932	-104.751803	0.40		
816.00	0.13	338.75	816.00	0.51	-1.19	1318380.89	3208977.64	40.204932	-104.751803	0.51		
909.00	0.18	348.08	909.00	0.75	-1.26	1318381.13	3208977.57	40.204933	-104.751804	0.75	TIE ON	
1014.00	0.41	240.46	1013.99	0.73	-1.62	1318381.10	3208977.21	40.204933	-104.751805	0.73	FIRST MWD SURVEY	
1075.00	0.53	226.00	1074.99	0.42	-2.01	1318380.80	3208976.82	40.204932	-104.751806	0.43		
1165.00	2.18	230.21	1164.96	-0.96	-3.63	1318379.40	3208975.22	40.204928	-104.751812	-0.96		
1256.00	3.56	220.11	1255.85	-4.23	-6.78	1318376.10	3208972.10	40.204919	-104.751823	-4.22		
1347.00	5.32	225.34	1346.57	-9.36	-11.60	1318370.94	3208967.32	40.204905	-104.751841	-9.34		
1439.00	6.33	223.29	1438.10	-16.04	-18.11	1318364.19	3208960.86	40.204887	-104.751864	-16.02		
1530.00	7.80	228.31	1528.40	-23.80	-26.16	1318356.37	3208952.88	40.204866	-104.751893	-23.77		
1620.00	9.66	229.16	1617.36	-32.80	-36.44	1318347.28	3208942.68	40.204841	-104.751929	-32.76		
1711.00	9.50	229.54	1707.09	-42.67	-47.93	1318337.32	3208931.27	40.204814	-104.751971	-42.61		
1801.00	10.09	218.96	1795.78	-53.62	-58.54	1318326.28	3208920.76	40.204784	-104.752009	-53.55		
1891.00	11.60	216.18	1884.17	-67.06	-68.84	1318312.76	3208910.57	40.204747	-104.752045	-66.97		
1981.00	12.16	214.44	1972.25	-82.18	-79.54	1318297.54	3208900.00	40.204705	-104.752084	-82.08		
2072.00	14.29	215.11	2060.83	-99.27	-91.42	1318280.35	3208888.26	40.204658	-104.752126	-99.16		
2164.00	15.22	217.57	2149.79	-118.13	-105.31	1318261.37	3208874.53	40.204607	-104.752176	-118.00		
2256.00	15.85	221.38	2238.43	-137.13	-120.98	1318242.24	3208859.02	40.204555	-104.752232	-136.98		
2347.00	17.60	224.26	2325.58	-156.31	-138.80	1318222.91	3208841.36	40.204502	-104.752296	-156.14		
2443.00	16.26	219.32	2417.43	-177.10	-157.45	1318201.96	3208822.89	40.204445	-104.752363	-176.91		
2536.00	16.96	225.60	2506.55	-196.67	-175.39	1318182.25	3208805.12	40.204391	-104.752427	-196.45		
2628.00	16.64	222.09	2594.63	-215.83	-193.81	1318162.93	3208786.86	40.204339	-104.752493	-215.60		
2721.00	16.33	222.11	2683.80	-235.41	-211.50	1318143.20	3208769.33	40.204285	-104.752556	-235.16		
2814.00	15.50	220.47	2773.24	-254.57	-228.33	1318123.91	3208752.66	40.204232	-104.752616	-254.29		
2907.00	16.95	227.17	2862.54	-273.24	-246.34	1318105.08	3208734.81	40.204181	-104.752681	-272.94		
3000.00	18.06	224.84	2951.23	-292.68	-266.45	1318085.47	3208714.87	40.204128	-104.752753	-292.35		
3092.00	18.41	228.19	3038.62	-312.48	-287.34	1318065.50	3208694.15	40.204073	-104.752828	-312.12		
3187.00	18.83	226.27	3128.64	-333.07	-309.60	1318044.72	3208672.07	40.204017	-104.752907	-332.70		
3279.00	16.51	219.52	3216.31	-353.43	-328.65	1318024.20	3208653.19	40.203961	-104.752976	-353.02		
3364.00	16.49	224.26	3297.81	-371.38	-344.75	1318006.11	3208637.23	40.203912	-104.753033	-370.96		
3449.00	14.85	227.98	3379.65	-387.32	-361.27	1317990.04	3208620.86	40.203868	-104.753092	-386.87		
3535.00	13.25	229.04	3463.07	-401.15	-376.90	1317976.07	3208605.34	40.203830	-104.753148	-400.69		
3620.00	11.64	230.23	3546.07	-413.03	-390.84	1317964.08	3208591.49	40.203797	-104.753198	-412.55		
3706.00	11.85	229.57	3630.27	-424.30	-404.23	1317952.69	3208578.20	40.203766	-104.753246	-423.81		
3791.00	10.09	231.63	3713.72	-434.59	-416.72	1317942.30	3208565.81	40.203738	-104.753291	-434.08		
3877.00	9.85	229.98	3798.42	-443.99	-428.26	1317932.80	3208554.35	40.203712	-104.753332	-443.47		
3962.00	8.57	221.87	3882.33	-453.38	-438.05	1317923.33	3208544.63	40.203686	-104.753367	-452.85		
4047.00	8.74	227.75	3966.36	-462.44	-447.06	1317914.19	3208535.70	40.203662	-104.753400	-461.90		
4133.00	8.40	226.06	4051.40	-471.19	-456.42	1317905.36	3208526.41	40.203638	-104.753433	-470.64		
4218.00	7.69	235.93	4135.57	-478.69	-465.60	1317897.79	3208517.29	40.203617	-104.753466	-478.12		

5D Survey Report

Survey Points (Relative to centre, TVD relative to Drill Floor)													
VD (US ft)	Inc (°)	Az (°)	TVD (US ft)	N. Offset (US ft)	E. Offset (US ft)	Northing (US ft)	Easting (US ft)	Latitude (°)	Longitude (°)	V.S. (US ft)	Comment		
4304.00	4.63	247.65	4221.06	-483.23	-473.58	1317893.18	3208509.35	40.203604	-104.753494	-482.65			
4389.00	3.21	252.22	4305.86	-485.27	-479.02	1317891.10	3208503.93	40.203599	-104.753514	-484.68			
4474.00	2.25	257.71	4390.76	-486.35	-482.92	1317889.99	3208500.05	40.203596	-104.753528	-485.76			
4560.00	1.79	268.25	4476.71	-486.75	-485.91	1317889.56	3208497.06	40.203595	-104.753539	-486.15			
4645.00	1.61	273.31	4561.67	-486.72	-488.43	1317889.57	3208494.54	40.203595	-104.753548	-486.12			
4730.00	1.81	274.05	4646.64	-486.56	-490.96	1317889.71	3208492.01	40.203595	-104.753557	-485.95			
4816.00	0.38	186.15	4732.62	-486.74	-492.34	1317889.51	3208490.62	40.203595	-104.753562	-486.14			
4901.00	1.75	130.55	4817.61	-487.87	-491.39	1317888.39	3208491.59	40.203592	-104.753558	-487.27			
4987.00	1.75	121.39	4903.57	-489.40	-489.27	1317886.87	3208493.72	40.203588	-104.753551	-488.81			
5072.00	1.44	115.63	4988.53	-490.54	-487.20	1317885.75	3208495.80	40.203584	-104.753543	-489.95			
5157.00	1.02	110.56	5073.51	-491.27	-485.53	1317885.04	3208497.48	40.203582	-104.753537	-490.68			
5243.00	0.88	97.04	5159.50	-491.62	-484.15	1317884.70	3208498.85	40.203581	-104.753532	-491.03			
5328.00	0.93	109.33	5244.49	-491.93	-482.86	1317884.41	3208500.15	40.203581	-104.753528	-491.34			
5413.00	1.20	101.27	5329.48	-492.33	-481.33	1317884.02	3208501.68	40.203579	-104.753522	-491.74			
5498.00	1.20	99.22	5414.46	-492.65	-479.58	1317883.71	3208503.43	40.203579	-104.753516	-492.06			
5584.00	1.00	96.55	5500.44	-492.88	-477.95	1317883.50	3208505.07	40.203578	-104.753510	-492.29			
5669.00	0.76	63.89	5585.43	-492.71	-476.70	1317883.67	3208506.31	40.203578	-104.753506	-492.13			
5755.00	0.90	67.49	5671.42	-492.20	-475.57	1317884.19	3208507.44	40.203580	-104.753502	-491.62			
5840.00	0.14	156.69	5756.42	-492.04	-474.91	1317884.36	3208508.10	40.203580	-104.753499	-491.46			
6011.00	0.36	63.23	5927.42	-491.99	-474.35	1317884.41	3208508.66	40.203580	-104.753497	-491.41			
6096.00	0.53	42.54	6012.41	-491.58	-473.84	1317884.83	3208509.16	40.203582	-104.753495	-491.00			
6182.00	0.89	45.75	6098.41	-490.82	-473.09	1317885.59	3208509.90	40.203584	-104.753493	-490.25			
6267.00	0.31	272.42	6183.41	-490.35	-472.85	1317886.06	3208510.14	40.203585	-104.753492	-489.78			
6352.00	0.43	230.75	6268.40	-490.55	-473.33	1317885.87	3208509.67	40.203584	-104.753494	-489.97			
6438.00	0.28	217.76	6354.40	-490.92	-473.71	1317885.49	3208509.29	40.203583	-104.753495	-490.34			
6607.00	0.40	173.77	6523.40	-491.83	-473.90	1317884.58	3208509.11	40.203581	-104.753496	-491.25			
6695.00	1.19	2.95	6611.39	-491.22	-473.82	1317885.19	3208509.19	40.203583	-104.753495	-490.64			
6780.00	7.23	352.95	6696.13	-485.03	-474.43	1317891.38	3208508.52	40.203600	-104.753498	-484.45			
6866.00	15.87	1.67	6780.31	-467.87	-474.75	1317908.53	3208508.06	40.203647	-104.753499	-467.29			
6951.00	23.62	4.21	6860.25	-439.23	-473.16	1317937.19	3208509.40	40.203725	-104.753493	-438.65			
7037.00	32.30	359.56	6936.15	-398.98	-472.07	1317977.44	3208510.16	40.203836	-104.753489	-398.41			
7122.00	42.34	1.88	7003.67	-347.53	-471.30	1318028.89	3208510.49	40.203977	-104.753486	-346.96			
7207.00	53.27	1.40	7060.67	-284.68	-469.52	1318091.76	3208511.73	40.204150	-104.753480	-284.11			
7293.00	63.94	357.77	7105.42	-211.40	-470.19	1318165.03	3208510.45	40.204351	-104.753482	-210.82			
7378.00	73.05	354.30	7136.55	-132.61	-475.72	1318243.77	3208504.25	40.204567	-104.753502	-132.03			
7463.00	79.74	354.40	7156.53	-50.44	-483.85	1318325.87	3208495.43	40.204793	-104.753531	-49.85			
7505.00	85.18	357.20	7162.04	-8.94	-486.89	1318367.35	3208492.04	40.204906	-104.753542	-8.34			
7553.00	87.82	359.25	7164.98	38.95	-488.38	1318415.21	3208490.15	40.205038	-104.753548	39.54	7 in		
7615.00	91.23	1.89	7165.49	100.93	-487.76	1318477.20	3208490.25	40.205208	-104.753545	101.52			
7700.00	90.56	1.80	7164.16	185.87	-485.02	1318562.16	3208492.27	40.205441	-104.753536	186.46			
7871.00	91.94	359.95	7160.43	356.80	-482.41	1318733.11	3208493.44	40.205910	-104.753526	357.39			

5D Survey Report

Survey Points (Relative to centre, TVD relative to Drill Floor)												
VD (US ft)	Inc (°)	Az (°)	TVD (US ft)	N.Offset (US ft)	E.Offset (US ft)	Northing (US ft)	Easting (US ft)	Latitude (°)	Longitude (°)	V.S. (US ft)	Comment	
8020.00	90.56	3.45	7157.18	505.67	-477.99	131882.01	3208496.60	40.206319	-104.753510	506.25		
8105.00	90.31	3.58	7156.54	590.51	-472.78	1318966.89	3208501.09	40.206552	-104.753492	591.09		
8190.00	90.88	3.48	7155.65	675.34	-467.55	1319051.76	3208505.61	40.206785	-104.753473	675.91		
8276.00	90.06	3.56	7154.95	761.18	-462.27	1319137.64	3208510.17	40.207021	-104.753454	761.74		
8361.00	89.63	3.03	7155.18	846.03	-457.38	1319222.54	3208514.34	40.207253	-104.753437	846.59		
8447.00	89.07	2.48	7156.15	931.93	-453.25	1319308.46	3208517.75	40.207489	-104.753422	932.48		
8532.00	88.95	0.55	7157.62	1016.88	-451.00	1319393.43	3208519.28	40.207722	-104.753414	1017.43		
8618.00	88.89	359.93	7159.24	1102.87	-450.64	1319479.41	3208518.91	40.207958	-104.753412	1103.42		
8703.00	89.21	359.07	7160.65	1187.85	-451.38	1319564.39	3208517.45	40.208192	-104.753415	1188.40		
8789.00	89.63	358.64	7161.52	1273.83	-453.10	1319650.35	3208515.01	40.208428	-104.753421	1274.38		
8874.00	89.69	358.57	7162.03	1358.80	-455.17	1319735.30	3208512.22	40.208661	-104.753429	1359.36		
8959.00	89.88	358.80	7162.35	1443.78	-457.12	1319820.26	3208509.55	40.208894	-104.753436	1444.34		
9045.00	89.82	359.17	7162.57	1529.76	-458.64	1319906.23	3208507.30	40.209130	-104.753441	1530.32		
9130.00	89.94	358.98	7162.75	1614.75	-460.02	1319991.20	3208505.22	40.209364	-104.753446	1615.31		
9216.00	90.09	358.54	7162.73	1700.73	-461.88	1320077.17	3208502.63	40.209600	-104.753453	1701.30		
9301.00	90.26	358.54	7162.47	1785.71	-464.04	1320162.12	3208499.75	40.209833	-104.753461	1786.27		
9386.00	90.18	358.14	7162.14	1870.67	-466.51	1320247.06	3208496.57	40.210066	-104.753469	1871.24		
9472.00	90.49	357.98	7161.64	1956.62	-469.42	1320332.98	3208492.93	40.210302	-104.753480	1957.19		
9557.00	90.31	358.72	7161.04	2041.58	-471.86	1320417.92	3208489.77	40.210535	-104.753489	2042.15		
9642.00	89.56	359.25	7161.14	2126.57	-473.37	1320502.89	3208487.54	40.210769	-104.753494	2127.14		
9728.00	89.75	358.86	7161.66	2212.55	-474.78	1320588.86	3208485.40	40.211005	-104.753499	2213.13		
9813.00	89.51	359.39	7162.21	2297.54	-476.09	1320673.83	3208483.39	40.211238	-104.753504	2298.12		
9898.00	88.77	359.64	7163.48	2382.53	-476.81	1320758.81	3208481.95	40.211471	-104.753506	2383.11		
9984.00	89.26	359.41	7164.96	2468.51	-477.52	1320844.78	3208480.51	40.211707	-104.753509	2469.09		
10069.00	90.18	359.60	7165.38	2553.51	-478.25	1320929.77	3208479.06	40.211941	-104.753511	2554.09		
10155.00	89.74	0.13	7165.44	2639.50	-478.46	1321015.76	3208478.13	40.212177	-104.753512	2640.09		
10240.00	90.25	0.80	7165.44	2724.50	-477.77	1321100.76	3208478.10	40.212410	-104.753510	2725.08		
10325.00	91.32	1.36	7164.28	2809.48	-476.16	1321185.75	3208478.99	40.212643	-104.753504	2810.06		
10410.00	91.23	1.58	7162.39	2894.43	-473.98	1321270.72	3208480.45	40.212877	-104.753496	2895.00		
10496.00	89.69	2.51	7161.70	2980.37	-470.91	1321356.68	3208482.80	40.213112	-104.753485	2980.94		
10581.00	88.71	1.80	7162.89	3065.30	-467.72	1321441.63	3208485.27	40.213346	-104.753474	3065.97		
10667.00	87.96	1.50	7165.38	3151.22	-465.24	1321527.58	3208487.02	40.213581	-104.753465	3151.79		
10752.00	87.97	0.99	7168.40	3236.15	-463.40	1321612.51	3208488.15	40.213815	-104.753458	3236.71		
10838.00	87.04	0.28	7172.15	3322.06	-462.45	1321698.43	3208488.38	40.214050	-104.753455	3322.62		
10923.00	87.53	359.35	7176.17	3406.96	-462.72	1321783.33	3208487.39	40.214284	-104.753456	3407.53		
11009.00	88.34	358.14	7179.27	3492.89	-464.60	1321869.23	3208484.78	40.214519	-104.753463	3493.45		
11094.00	88.40	358.80	7181.69	3577.82	-466.87	1321954.14	3208481.80	40.214753	-104.753471	3578.39		
11179.00	87.10	358.21	7185.03	3662.72	-469.09	1322039.03	3208478.87	40.214986	-104.753479	3663.29		
11264.00	86.91	357.55	7189.47	3747.55	-472.23	1322123.82	3208475.01	40.215218	-104.753490	3748.12		
11350.00	87.41	358.05	7193.73	3833.38	-475.52	1322209.62	3208470.99	40.215454	-104.753502	3833.96		
11435.00	87.66	358.01	7197.38	3918.25	-478.44	1322294.46	3208467.35	40.215687	-104.753512	3918.83		

5D Survey Report

Survey Points (Relative to centre, TVD relative to Drill Floor)												
VD (US ft)	Inc (°)	Az (°)	TVD (US ft)	N.Offset (US ft)	E.Offset (US ft)	Northing (US ft)	Easting (US ft)	Latitude (°)	Longitude (°)	VS (US ft)	Comment	
11519.00	87.97	357.82	7200.59	4002.13	-481.50	1322378.32	3208463.59	40.215917	-104.753523	4002.72		
11605.00	88.27	357.91	7203.41	4088.03	-484.70	1322464.18	3208459.67	40.216153	-104.753535	4088.62		
11664.00	88.46	357.93	7205.09	4146.97	-486.84	1322523.10	3208457.03	40.216315	-104.753542	4147.56	LAST MWD SURVEY	
11722.00	88.46	357.93	7206.65	4204.91	-488.93	1322581.02	3208454.44	40.216474	-104.753550	4205.50	PROJ. TO TC	

Formation Points (Relative to centre, TVD relative to Drill Floor)		
Name	MC (US ft)	TVD (US ft)
FOX HILLS BASE	699.00	699.00
PARKMAN	4112.38	4031.00
SUSSEX	4538.28	4455.00
SHARON SPRINGS	7167.99	7036.00
NIORARA A	7289.80	7104.00
NIORARA B	7439.61	7152.00



DAILY ACTIVITIES

