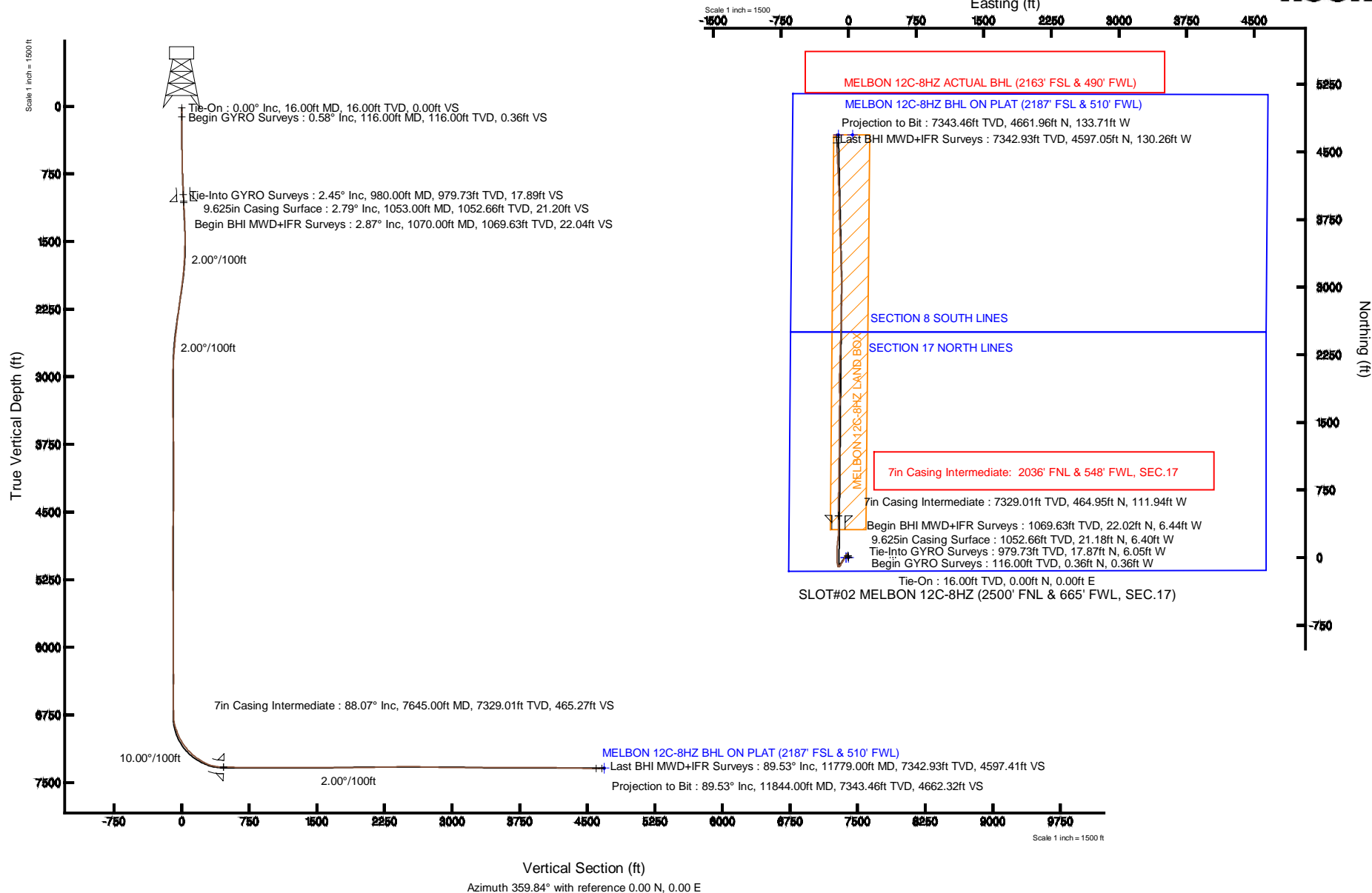


KERR-MCGEE OIL & GAS ONSHORE LP

Location: COLORADO Slot: SLOT#02 MELBON 12C-8HZ (2500' FNL & 665' FWL, SEC.17)
 Field: WELD COUNTY (KERR MCGEE) Well: MELBON 12C-8HZ
 Facility: SEC.17-T2N-R6SW Wellbore: MELBON 12C-8HZ PWB

Plot reference wellpath is MELBON 12C-8HZ (REV-C.0) PWP	
True vertical depths are referenced to XTREME 24 (RKB)	Grid System: NAD83 / Lambert Colorado SP, Northern Zone (501), US feet
Measured depths are referenced to XTREME 24 (RKB)	North Reference: True north
XTREME 24 (RKB) to Mean Sea Level: 4970 feet	Scale: True distance
Mean Sea Level to Mud line (At Slot: SLOT#02 MELBON 12C-8HZ (2500' FNL & 665' FWL, SEC.17)): 0 feet	Depths are in feet
Coordinates are in feet referenced to Slot	Created by: preccain on 6/8/2013





Actual Wellpath Report

MELBON 12C-8HZ AWP

Page 1 of 7



REFERENCE WELLPATH IDENTIFICATION

Operator	KERR-MCGEE OIL & GAS ONSHORE LP	Slot	SLOT#02 MELBON 12C-8HZ (2500' FNL & 665' FWL, SEC.17)
Area	COLORADO	Well	MELBON 12C-8HZ
Field	WELD COUNTY (KERR MCGEE)	Wellbore	MELBON 12C-8HZ AWB
Facility	SEC.17-T2N-R65W		

REPORT SETUP INFORMATION

Projection System	NAD83 / Lambert Colorado SP, Northern Zone (501), US feet	Software System	WellArchitect® 4.0.0
North Reference	True	User	Precain
Scale	0.999959	Report Generated	6/8/2013 at 6:38:29 PM
Convergence at slot	n/a	Database/Source file	WellArchitectDB/MELBON_12C-8HZ_AWB.xml

WELLPATH LOCATION

	Local coordinates		Grid coordinates		Geographic coordinates	
	North[ft]	East[ft]	Easting[US ft]	Northing[US ft]	Latitude	Longitude
Slot Location	-0.60	-340.10	3225069.49	1294538.26	40°08'20.749"N	104°41'41.885"W
Facility Reference Pt			3225409.56	1294541.95	40°08'20.755"N	104°41'37.506"W
Field Reference Pt			3197771.84	1268891.29	40°04'09.600"N	104°47'36.000"W

WELLPATH DATUM

Calculation method	Minimum curvature	XTREME 24 (RKB) to Facility Vertical Datum	4970.00ft
Horizontal Reference Pt	Slot	XTREME 24 (RKB) to Mean Sea Level	4970.00ft
Vertical Reference Pt	XTREME 24 (RKB)	XTREME 24 (RKB) to Mud Line at Slot (SLOT#02 MELBON 12C-8HZ (2500' FNL & 665' FWL, SEC.17))	4970.00ft
MD Reference Pt	XTREME 24 (RKB)	Section Origin	N 0.00, E 0.00 ft
Field Vertical Reference	Mean Sea Level	Section Azimuth	359.84°



Actual Wellpath Report

MELBON 12C-8HZ AWP

Page 2 of 7



REFERENCE WELLPATH IDENTIFICATION

Operator	KERR-MCGEE OIL & GAS ONSHORE LP	Slot	SLOT#02 MELBON 12C-8HZ (2500' FNL & 665' FWL, SEC.17)
Area	COLORADO	Well	MELBON 12C-8HZ
Field	WELD COUNTY (KERR MCGEE)	Wellbore	MELBON 12C-8HZ AWP
Facility	SEC.17-T2N-R6SW		

WELLPATH DATA (151 stations) † = interpolated/extrapolated station

MD [ft]	Inclination [°]	Azimuth [°]	TVD [ft]	Vert Sect [ft]	North [ft]	East [ft]	Latitude	Longitude	DLS [°/100ft]	Comments
0.00†	0.000	315.270	0.00	0.00	0.00	0.00	40°08'20.749"N	104°41'41.885"W	0.00	
16.00	0.000	315.270	16.00	0.00	0.00	0.00	40°08'20.749"N	104°41'41.885"W	0.00	Tie-On
116.00	0.580	315.270	116.00	0.36	0.36	-0.36	40°08'20.753"N	104°41'41.890"W	0.58	Begin GYRO Surveys
216.00	0.580	290.340	215.99	0.90	0.90	-1.19	40°08'20.758"N	104°41'41.900"W	0.25	
316.00	0.660	311.160	315.99	1.46	1.45	-2.10	40°08'20.763"N	104°41'41.912"W	0.24	
416.00	0.820	337.730	415.98	2.50	2.49	-2.80	40°08'20.774"N	104°41'41.921"W	0.37	
516.00	0.900	350.630	515.97	3.94	3.93	-3.20	40°08'20.788"N	104°41'41.926"W	0.21	
616.00	1.340	336.660	615.95	5.79	5.78	-3.79	40°08'20.806"N	104°41'41.934"W	0.51	
716.00	1.710	338.320	715.91	8.25	8.24	-4.80	40°08'20.830"N	104°41'41.947"W	0.37	
816.00	2.030	354.060	815.86	11.40	11.39	-5.54	40°08'20.862"N	104°41'41.956"W	0.60	
916.00	2.360	358.230	915.79	15.22	15.20	-5.79	40°08'20.899"N	104°41'41.959"W	0.37	
980.00	2.450	350.590	979.73	17.89	17.87	-6.05	40°08'20.926"N	104°41'41.963"W	0.52	Tie-Into GYRO Surveys
1070.00	2.870	358.200	1069.63	22.04	22.02	-6.44	40°08'20.967"N	104°41'41.968"W	0.61	Begin BHI MWD+IFR Surveys
1163.00	2.830	352.490	1162.52	26.64	26.62	-6.81	40°08'21.012"N	104°41'41.973"W	0.31	
1257.00	2.550	352.020	1256.42	31.02	31.00	-7.40	40°08'21.055"N	104°41'41.980"W	0.30	
1350.00	1.610	346.240	1349.35	34.34	34.31	-8.00	40°08'21.088"N	104°41'41.988"W	1.03	
1444.00	0.710	284.250	1443.34	35.76	35.74	-8.88	40°08'21.102"N	104°41'41.999"W	1.51	
1537.00	2.280	250.370	1536.30	35.29	35.26	-11.18	40°08'21.097"N	104°41'42.029"W	1.87	
1631.00	3.560	240.120	1630.18	33.22	33.18	-15.47	40°08'21.077"N	104°41'42.084"W	1.47	
1725.00	5.110	230.330	1723.91	29.11	29.05	-21.22	40°08'21.036"N	104°41'42.158"W	1.82	
1819.00	6.350	220.580	1817.44	22.51	22.43	-27.83	40°08'20.971"N	104°41'42.243"W	1.67	
1912.00	7.750	214.140	1909.74	13.43	13.33	-34.69	40°08'20.881"N	104°41'42.332"W	1.73	
1998.00	9.070	209.630	1994.81	2.76	2.64	-41.30	40°08'20.775"N	104°41'42.417"W	1.71	
2083.00	8.710	206.610	2078.79	-8.80	-8.94	-47.50	40°08'20.661"N	104°41'42.497"W	0.69	
2169.00	9.160	211.350	2163.75	-20.45	-20.60	-53.97	40°08'20.545"N	104°41'42.580"W	1.00	
2254.00	9.490	209.790	2247.62	-32.29	-32.46	-60.97	40°08'20.428"N	104°41'42.670"W	0.49	
2339.00	8.290	212.080	2331.60	-43.54	-43.74	-67.71	40°08'20.317"N	104°41'42.757"W	1.47	
2424.00	7.260	209.560	2415.82	-53.39	-53.60	-73.62	40°08'20.219"N	104°41'42.833"W	1.28	
2510.00	7.490	210.630	2501.11	-62.93	-63.15	-79.15	40°08'20.125"N	104°41'42.904"W	0.31	
2595.00	6.760	210.370	2585.45	-71.99	-72.23	-84.50	40°08'20.035"N	104°41'42.973"W	0.86	
2680.00	5.670	206.210	2669.95	-80.07	-80.32	-88.89	40°08'19.955"N	104°41'43.029"W	1.39	
2765.00	4.900	215.270	2754.59	-86.79	-87.05	-92.84	40°08'19.889"N	104°41'43.080"W	1.33	
2851.00	4.520	222.790	2840.30	-92.26	-92.54	-97.26	40°08'19.835"N	104°41'43.137"W	0.84	
2936.00	4.030	236.420	2925.07	-96.35	-96.65	-102.03	40°08'19.794"N	104°41'43.199"W	1.32	
3022.00	2.340	251.450	3010.93	-98.57	-98.88	-106.21	40°08'19.772"N	104°41'43.253"W	2.18	
3107.00	0.840	268.010	3095.90	-99.14	-99.45	-108.48	40°08'19.766"N	104°41'43.282"W	1.83	
3192.00	1.080	279.880	3180.88	-99.02	-99.33	-109.89	40°08'19.767"N	104°41'43.300"W	0.37	
3279.00	0.650	353.140	3267.88	-98.39	-98.70	-110.75	40°08'19.774"N	104°41'43.311"W	1.25	
3364.00	0.650	333.830	3352.87	-97.47	-97.79	-111.02	40°08'19.783"N	104°41'43.315"W	0.26	
3449.00	0.790	340.110	3437.86	-96.49	-96.81	-111.44	40°08'19.792"N	104°41'43.320"W	0.19	
3535.00	0.920	336.590	3523.85	-95.30	-95.62	-111.91	40°08'19.804"N	104°41'43.326"W	0.16	
3620.00	1.410	337.590	3608.84	-93.70	-94.02	-112.58	40°08'19.820"N	104°41'43.335"W	0.58	
3705.00	1.540	16.590	3693.81	-91.64	-91.96	-112.65	40°08'19.840"N	104°41'43.336"W	1.17	
3791.00	1.380	25.640	3779.78	-89.60	-89.92	-111.88	40°08'19.860"N	104°41'43.325"W	0.33	
3876.00	0.890	35.920	3864.77	-88.15	-88.46	-111.05	40°08'19.875"N	104°41'43.315"W	0.62	

REFERENCE WELLPATH IDENTIFICATION

Operator	KERR-MCGEE OIL & GAS ONSHORE LP	Slot	SLOT#02 MELBON 12C-8HZ (2500' FNL & 665' FWL, SEC.17)
Area	COLORADO	Well	MELBON 12C-8HZ
Field	WELD COUNTY (KERR MCGEE)	Wellbore	MELBON 12C-8HZ AWB
Facility	SEC.17-T2N-R65W		

WELLPATH DATA (151 stations)

MD [ft]	Inclination [°]	Azimuth [°]	TVD [ft]	Vert Sect [ft]	North [ft]	East [ft]	Latitude	Longitude	DLS [°/100ft]	Comments
3961.00	0.650	79.680	3949.76	-87.53	-87.84	-110.18	40°08'19.881"N	104°41'43.304"W	0.72	
4046.00	0.600	125.260	4034.75	-87.70	-88.01	-109.35	40°08'19.879"N	104°41'43.293"W	0.57	
4132.00	1.080	51.990	4120.75	-87.47	-87.77	-108.34	40°08'19.882"N	104°41'43.280"W	1.25	
4217.00	0.700	80.000	4205.74	-86.88	-87.19	-107.20	40°08'19.887"N	104°41'43.265"W	0.67	
4302.00	0.720	127.710	4290.73	-87.12	-87.43	-106.26	40°08'19.885"N	104°41'43.253"W	0.68	
4387.00	1.250	157.080	4375.72	-88.31	-88.61	-105.48	40°08'19.873"N	104°41'43.243"W	0.84	
4473.00	1.690	161.810	4461.69	-90.38	-90.68	-104.72	40°08'19.853"N	104°41'43.233"W	0.53	
4558.00	2.010	165.330	4546.65	-93.01	-93.31	-103.95	40°08'19.827"N	104°41'43.223"W	0.40	
4643.00	1.680	161.840	4631.60	-95.64	-95.93	-103.19	40°08'19.801"N	104°41'43.214"W	0.41	
4729.00	1.070	195.680	4717.58	-97.61	-97.91	-103.01	40°08'19.781"N	104°41'43.211"W	1.15	
4814.00	1.270	234.400	4802.56	-98.92	-99.22	-103.99	40°08'19.769"N	104°41'43.224"W	0.94	
4899.00	1.800	250.910	4887.53	-99.90	-100.20	-106.02	40°08'19.759"N	104°41'43.250"W	0.81	
4984.00	1.860	263.520	4972.49	-100.49	-100.80	-108.65	40°08'19.753"N	104°41'43.284"W	0.48	
5069.00	2.230	294.410	5057.44	-99.95	-100.27	-111.53	40°08'19.758"N	104°41'43.321"W	1.35	
5155.00	1.730	306.240	5143.38	-98.48	-98.81	-114.10	40°08'19.773"N	104°41'43.354"W	0.75	
5240.00	1.040	301.270	5228.36	-97.32	-97.65	-115.79	40°08'19.784"N	104°41'43.376"W	0.82	
5325.00	0.300	347.920	5313.35	-96.70	-97.03	-116.50	40°08'19.790"N	104°41'43.385"W	1.01	
5410.00	0.480	32.430	5398.35	-96.18	-96.51	-116.35	40°08'19.795"N	104°41'43.383"W	0.40	
5496.00	0.470	4.470	5484.35	-95.53	-95.86	-116.13	40°08'19.802"N	104°41'43.380"W	0.27	
5581.00	0.900	18.260	5569.34	-94.55	-94.88	-115.90	40°08'19.811"N	104°41'43.377"W	0.54	
5666.00	0.710	78.300	5654.34	-93.81	-94.14	-115.17	40°08'19.819"N	104°41'43.368"W	0.97	
5752.00	0.970	87.460	5740.33	-93.67	-94.00	-113.92	40°08'19.820"N	104°41'43.352"W	0.34	
5837.00	0.900	71.440	5825.31	-93.43	-93.75	-112.57	40°08'19.823"N	104°41'43.334"W	0.32	
5922.00	0.590	49.970	5910.31	-92.94	-93.26	-111.60	40°08'19.827"N	104°41'43.322"W	0.48	
6008.00	0.630	93.230	5996.30	-92.68	-93.00	-110.79	40°08'19.830"N	104°41'43.312"W	0.52	
6093.00	0.180	343.290	6081.30	-92.58	-92.90	-110.36	40°08'19.831"N	104°41'43.306"W	0.84	
6178.00	0.600	328.550	6166.30	-92.07	-92.39	-110.63	40°08'19.836"N	104°41'43.309"W	0.50	
6263.00	0.500	0.200	6251.30	-91.32	-91.64	-110.86	40°08'19.843"N	104°41'43.312"W	0.37	
6349.00	1.210	268.040	6337.29	-90.98	-91.30	-111.77	40°08'19.847"N	104°41'43.324"W	1.54	
6434.00	0.950	263.310	6422.27	-91.09	-91.41	-113.37	40°08'19.846"N	104°41'43.345"W	0.32	
6519.00	0.280	254.630	6507.27	-91.22	-91.55	-114.27	40°08'19.844"N	104°41'43.356"W	0.79	
6605.00	0.360	263.650	6593.27	-91.30	-91.63	-114.74	40°08'19.843"N	104°41'43.362"W	0.11	
6699.00	0.630	290.820	6687.26	-91.15	-91.48	-115.51	40°08'19.845"N	104°41'43.372"W	0.37	
6739.00	0.810	287.300	6727.26	-90.99	-91.32	-115.99	40°08'19.847"N	104°41'43.378"W	0.46	
6781.00	3.110	327.340	6769.23	-89.94	-90.27	-116.89	40°08'19.857"N	104°41'43.390"W	6.06	
6824.00	8.200	341.810	6812.01	-86.03	-86.37	-118.48	40°08'19.895"N	104°41'43.410"W	12.20	
6866.00	13.520	341.740	6853.25	-78.51	-78.86	-120.95	40°08'19.970"N	104°41'43.442"W	12.67	
6909.00	17.860	346.630	6894.63	-67.31	-67.66	-124.05	40°08'20.080"N	104°41'43.482"W	10.54	
6952.00	20.450	351.310	6935.25	-53.46	-53.82	-126.71	40°08'20.217"N	104°41'43.517"W	7.00	
6994.00	23.210	357.110	6974.24	-37.93	-38.30	-128.24	40°08'20.371"N	104°41'43.536"W	8.33	
7037.00	27.440	0.120	7013.10	-19.55	-19.92	-128.65	40°08'20.552"N	104°41'43.541"W	10.28	
7079.00	32.490	359.520	7049.48	1.42	1.05	-128.72	40°08'20.759"N	104°41'43.542"W	12.04	
7122.00	36.360	358.430	7084.94	25.72	25.35	-129.17	40°08'21.000"N	104°41'43.548"W	9.11	
7165.00	38.120	359.630	7119.17	51.74	51.37	-129.60	40°08'21.257"N	104°41'43.554"W	4.43	
7207.00	42.610	0.720	7151.16	78.93	78.56	-129.51	40°08'21.525"N	104°41'43.553"W	10.82	

REFERENCE WELLPATH IDENTIFICATION

Operator	KERR-MCGEE OIL & GAS ONSHORE LP	Slot	SLOT#02 MELBON 12C-8HZ (2500' FNL & 665' FWL, SEC.17)
Area	COLORADO	Well	MELBON 12C-8HZ
Field	WELD COUNTY (KERR MCGEE)	Wellbore	MELBON 12C-8HZ AWP
Facility	SEC.17-T2N-R65W		

WELLPATH DATA (151 stations) † = interpolated/extrapolated station

MD [ft]	Inclination [°]	Azimuth [°]	TVD [ft]	Vert Sect [ft]	North [ft]	East [ft]	Latitude	Longitude	DLS [°/100ft]	Comments
7250.00	48.130	4.250	7181.37	109.47	109.11	-128.14	40°08'21.827"N	104°41'43.535"W	14.10	
7293.00	53.410	5.980	7208.55	142.63	142.27	-125.15	40°08'22.155"N	104°41'43.496"W	12.67	
7335.00	56.460	6.540	7232.68	176.78	176.44	-121.40	40°08'22.493"N	104°41'43.448"W	7.34	
7378.00	58.460	6.540	7255.81	212.78	212.45	-117.27	40°08'22.848"N	104°41'43.395"W	4.65	
7421.00	61.240	4.190	7277.40	249.79	249.46	-113.80	40°08'23.214"N	104°41'43.350"W	8.01	
7463.00	66.960	1.130	7295.75	287.50	287.18	-112.08	40°08'23.587"N	104°41'43.328"W	15.11	
7506.00	73.430	0.220	7310.31	327.93	327.62	-111.61	40°08'23.987"N	104°41'43.322"W	15.18	
7549.00	79.990	359.790	7320.19	369.76	369.44	-111.60	40°08'24.400"N	104°41'43.322"W	15.29	
7599.00	85.580	359.500	7326.46	419.34	419.02	-111.91	40°08'24.890"N	104°41'43.326"W	11.19	
7645.00†	88.074	0.429	7329.01	465.27	464.95	-111.94	40°08'25.344"N	104°41'43.326"W	5.78	7" Casing Point
7656.00	88.670	0.650	7329.32	476.26	475.94	-111.84	40°08'25.452"N	104°41'43.325"W	5.78	
7741.00	89.130	0.880	7330.96	561.23	560.92	-110.70	40°08'26.292"N	104°41'43.310"W	0.61	
7826.00	89.310	359.920	7332.11	646.22	645.91	-110.11	40°08'27.132"N	104°41'43.303"W	1.15	
7912.00	89.380	0.760	7333.10	732.21	731.90	-109.60	40°08'27.982"N	104°41'43.296"W	0.98	
7998.00	89.500	0.870	7333.94	818.19	817.89	-108.38	40°08'28.831"N	104°41'43.280"W	0.19	
8083.00	89.500	0.860	7334.68	903.18	902.88	-107.09	40°08'29.671"N	104°41'43.264"W	0.01	
8168.00	90.060	0.730	7335.00	988.16	987.87	-105.91	40°08'30.511"N	104°41'43.249"W	0.68	
8254.00	90.270	0.690	7334.76	1074.15	1073.86	-104.85	40°08'31.361"N	104°41'43.235"W	0.25	
8339.00	90.340	1.280	7334.30	1159.14	1158.85	-103.39	40°08'32.201"N	104°41'43.216"W	0.70	
8425.00	90.360	0.670	7333.78	1245.12	1244.83	-101.92	40°08'33.051"N	104°41'43.197"W	0.71	
8510.00	90.180	0.140	7333.38	1330.11	1329.83	-101.32	40°08'33.890"N	104°41'43.190"W	0.66	
8595.00	89.960	0.320	7333.27	1415.11	1414.83	-100.98	40°08'34.730"N	104°41'43.185"W	0.33	
8681.00	90.180	0.190	7333.17	1501.11	1500.83	-100.60	40°08'35.580"N	104°41'43.180"W	0.30	
8766.00	90.120	0.640	7332.95	1586.10	1585.82	-99.98	40°08'36.420"N	104°41'43.172"W	0.53	
8851.00	90.210	0.290	7332.70	1671.10	1670.82	-99.29	40°08'37.260"N	104°41'43.164"W	0.43	
8936.00	90.000	0.350	7332.55	1756.09	1755.82	-98.82	40°08'38.100"N	104°41'43.157"W	0.26	
9022.00	88.730	358.820	7333.50	1842.08	1841.81	-99.44	40°08'38.950"N	104°41'43.165"W	2.31	
9107.00	90.400	359.720	7334.14	1927.07	1926.79	-100.52	40°08'39.790"N	104°41'43.179"W	2.23	
9192.00	90.860	1.150	7333.21	2012.06	2011.78	-99.88	40°08'40.630"N	104°41'43.171"W	1.77	
9277.00	90.520	0.790	7332.19	2097.04	2096.77	-98.44	40°08'41.469"N	104°41'43.153"W	0.58	
9363.00	91.780	1.950	7330.46	2182.99	2182.72	-96.38	40°08'42.319"N	104°41'43.126"W	1.99	
9448.00	91.940	1.970	7327.70	2267.88	2267.63	-93.48	40°08'43.158"N	104°41'43.089"W	0.19	
9533.00	90.150	2.190	7326.15	2352.80	2352.55	-90.39	40°08'43.997"N	104°41'43.049"W	2.12	
9619.00	91.010	1.930	7325.28	2438.73	2438.49	-87.30	40°08'44.846"N	104°41'43.009"W	1.04	
9704.00	90.610	2.590	7324.08	2523.64	2523.42	-83.95	40°08'45.686"N	104°41'42.966"W	0.91	
9789.00	88.230	0.780	7324.94	2608.59	2608.36	-81.45	40°08'46.525"N	104°41'42.934"W	3.52	
9874.00	88.490	0.870	7327.37	2693.54	2693.32	-80.23	40°08'47.365"N	104°41'42.918"W	0.32	
9956.00	88.700	1.490	7329.38	2775.49	2775.28	-78.54	40°08'48.175"N	104°41'42.896"W	0.80	
10041.00	87.810	0.000	7331.97	2860.44	2860.23	-77.44	40°08'49.014"N	104°41'42.882"W	2.04	
10127.00	88.850	0.080	7334.48	2946.40	2946.19	-77.38	40°08'49.863"N	104°41'42.881"W	1.21	
10212.00	90.000	359.930	7335.33	3031.39	3031.19	-77.37	40°08'50.703"N	104°41'42.881"W	1.36	
10297.00	89.440	358.170	7335.75	3116.38	3116.17	-78.78	40°08'51.543"N	104°41'42.899"W	2.17	
10382.00	90.270	358.500	7335.96	3201.35	3201.13	-81.25	40°08'52.383"N	104°41'42.931"W	1.05	
10468.00	90.210	357.960	7335.60	3287.32	3287.09	-83.90	40°08'53.232"N	104°41'42.965"W	0.63	
10553.00	89.900	358.290	7335.52	3372.28	3372.04	-86.68	40°08'54.072"N	104°41'43.001"W	0.53	



Actual Wellpath Report

MELBON 12C-8HZ AWP

Page 5 of 7



REFERENCE WELLPATH IDENTIFICATION

Operator	KERR-MCGEE OIL & GAS ONSHORE LP	Slot	SLOT#02 MELBON 12C-8HZ (2500' FNL & 665' FWL, SEC.17)
Area	COLORADO	Well	MELBON 12C-8HZ
Field	WELD COUNTY (KERR MCGEE)	Wellbore	MELBON 12C-8HZ AWP
Facility	SEC.17-T2N-R65W		

WELLPATH DATA (151 stations)

MD [ft]	Inclination [°]	Azimuth [°]	TVD [ft]	Vert Sect [ft]	North [ft]	East [ft]	Latitude	Longitude	DLS [°/100ft]	Comments
10638.00	90.800	357.440	7335.00	3457.22	3456.98	-89.85	40°08'54.911"N	104°41'43.042"W	1.46	
10724.00	90.330	358.290	7334.15	3543.17	3542.92	-93.05	40°08'55.760"N	104°41'43.083"W	1.13	
10809.00	90.300	358.000	7333.68	3628.13	3627.87	-95.81	40°08'56.600"N	104°41'43.119"W	0.34	
10894.00	90.480	358.240	7333.11	3713.09	3712.82	-98.59	40°08'57.439"N	104°41'43.155"W	0.35	
10979.00	91.040	358.860	7331.98	3798.06	3797.79	-100.75	40°08'58.279"N	104°41'43.182"W	0.98	
11065.00	89.870	359.360	7331.30	3884.05	3883.77	-102.08	40°08'59.129"N	104°41'43.200"W	1.48	
11150.00	89.600	358.610	7331.69	3969.04	3968.76	-103.59	40°08'59.969"N	104°41'43.219"W	0.94	
11235.00	88.300	357.690	7333.25	4053.98	4053.70	-106.33	40°09'00.808"N	104°41'43.254"W	1.87	
11320.00	88.180	357.270	7335.86	4138.87	4138.57	-110.07	40°09'01.647"N	104°41'43.302"W	0.51	
11406.00	88.390	357.980	7338.43	4224.77	4224.46	-113.63	40°09'02.495"N	104°41'43.348"W	0.86	
11491.00	89.260	357.090	7340.17	4309.68	4309.36	-117.28	40°09'03.334"N	104°41'43.395"W	1.46	
11576.00	89.290	357.290	7341.25	4394.58	4394.25	-121.45	40°09'04.173"N	104°41'43.449"W	0.24	
11662.00	89.530	357.600	7342.14	4480.50	4480.16	-125.28	40°09'05.022"N	104°41'43.498"W	0.46	
11748.00	89.690	357.700	7342.72	4566.44	4566.09	-128.81	40°09'05.871"N	104°41'43.544"W	0.22	
11779.00	89.530	356.950	7342.93	4597.41	4597.05	-130.26	40°09'06.177"N	104°41'43.562"W	2.47	Last BHI MWD+IFR Surveys
11844.00	89.530	356.950	7343.46	4662.32	4661.96	-133.71	40°09'06.819"N	104°41'43.607"W	0.00	Projection to Bit

HOLE & CASING SECTIONS - Ref Wellbore: MELBON 12C-8HZ AWP Ref Wellpath: MELBON 12C-8HZ AWP

String/Diameter	Start MD [ft]	End MD [ft]	Interval [ft]	Start TVD [ft]	End TVD [ft]	Start N/S [ft]	Start E/W [ft]	End N/S [ft]	End E/W [ft]
13.5in Open Hole	16.00	1053.00	1037.00	16.00	1052.66	0.00	0.00	21.18	-6.40
9.625in Casing Surface	16.00	1053.00	1037.00	16.00	1052.66	0.00	0.00	21.18	-6.40
8.75in Open Hole	1053.00	7655.00	6602.00	1052.66	7329.30	21.18	-6.40	474.94	-111.85
7in Casing Intermediate	16.00	7645.00	7629.00	16.00	7329.01	0.00	0.00	464.95	-111.94
6.125in Open Hole	16.00	11844.00	11828.00	16.00	7343.46	0.00	0.00	4661.96	-133.71



Actual Wellpath Report

MELBON 12C-8HZ AWP

Page 6 of 7



REFERENCE WELLPATH IDENTIFICATION

Operator	KERR-MCGEE OIL & GAS ONSHORE LP	Slot	SLOT#02 MELBON 12C-8HZ (2500' FNL & 665' FWL, SEC.17)
Area	COLORADO	Well	MELBON 12C-8HZ
Field	WELD COUNTY (KERR MCGEE)	Wellbore	MELBON 12C-8HZ AWB
Facility	SEC.17-T2N-R65W		

TARGETS

Name	MD [ft]	TVD [ft]	North [ft]	East [ft]	Grid East [US ft]	Grid North [US ft]	Latitude	Longitude	Shape
FIELDS X8-12 150' RADIUS		7200.00	4688.69	43.87	3225070.80	1299226.95	40°09'07.083"N	104°41'41.320"W	circle
MELBON 12C-8HZ LAND BOX		7200.00	0.00	0.00	3225069.49	1294538.25	40°08'20.749"N	104°41'41.885"W	polygon
SECTION 17 NORTH LINES		7200.00	0.00	-29.90	3225039.60	1294537.98	40°08'20.749"N	104°41'42.270"W	polygon
SECTION 8 SOUTH LINES		7200.00	0.00	-29.90	3225039.60	1294537.98	40°08'20.749"N	104°41'42.270"W	polygon
MELBON 12C-8HZ BHL ON PLAT (2187' FSL & 510' FWL)		7341.00	4687.07	-112.90	3224914.05	1299223.91	40°09'07.067"N	104°41'43.339"W	point

WELLPATH COMPOSITION - Ref Wellbore: MELBON 12C-8HZ AWB Ref Wellpath: MELBON 12C-8HZ AWP

Start MD [ft]	End MD [ft]	Positional Uncertainty Model	Log Name/Comment	Wellbore
16.00	980.00	Generic gyro - continuous (Standard)	MS ENERGY GYRODATA SURVEYS <116-980>	MELBON 12C-8HZ AWB
980.00	7599.00	NaviTrak (MAGCORR,IFR)	BHI MWD+IFR SURVEYS 8 3/4" HOLE <1070-7599>	MELBON 12C-8HZ AWB
7599.00	11779.00	OnTrak (MAGCORR,IFR)	BHI MWD+IFR SURVEYS 6 1/8" HOLE <7656-11779>	MELBON 12C-8HZ AWB
11779.00	11844.00	Blind Drilling (std)	Projection to bit	MELBON 12C-8HZ AWB



Actual Wellpath Report

MELBON 12C-8HZ AWP

Page 7 of 7



REFERENCE WELLPATH IDENTIFICATION

Operator	KERR-MCGEE OIL & GAS ONSHORE LP	Slot	SLOT#02 MELBON 12C-8HZ (2500' FNL & 665' FWL, SEC.17)
Area	COLORADO	Well	MELBON 12C-8HZ
Field	WELD COUNTY (KERR MCGEE)	Wellbore	MELBON 12C-8HZ AWP
Facility	SEC.17-T2N-R65W		

WELLPATH COMMENTS

MD [ft]	Inclination [°]	Azimuth [°]	TVD [ft]	Comment
16.00	0.000	315.270	16.00	Tie-On
116.00	0.580	315.270	116.00	Begin GYRO Surveys
980.00	2.450	350.590	979.73	Tie-Into GYRO Surveys
1070.00	2.870	358.200	1069.63	Begin BHI MWD+IFR Surveys
7645.00	88.074	0.429	7329.01	7" Casing Point
11779.00	89.530	356.950	7342.93	Last BHI MWD+IFR Surveys
11844.00	89.530	356.950	7343.46	Projection to Bit