



# Weatherford®



---

## END OF WELL REPORT

FINAL SURVEYS

SECTION 1

DAILY ACTIVITIES

SECTION 2

BHA REPORTS

SECTION 3

MOTOR REPORTS

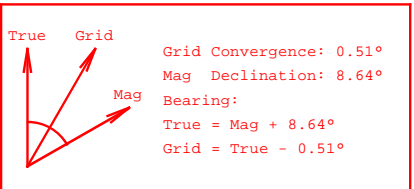
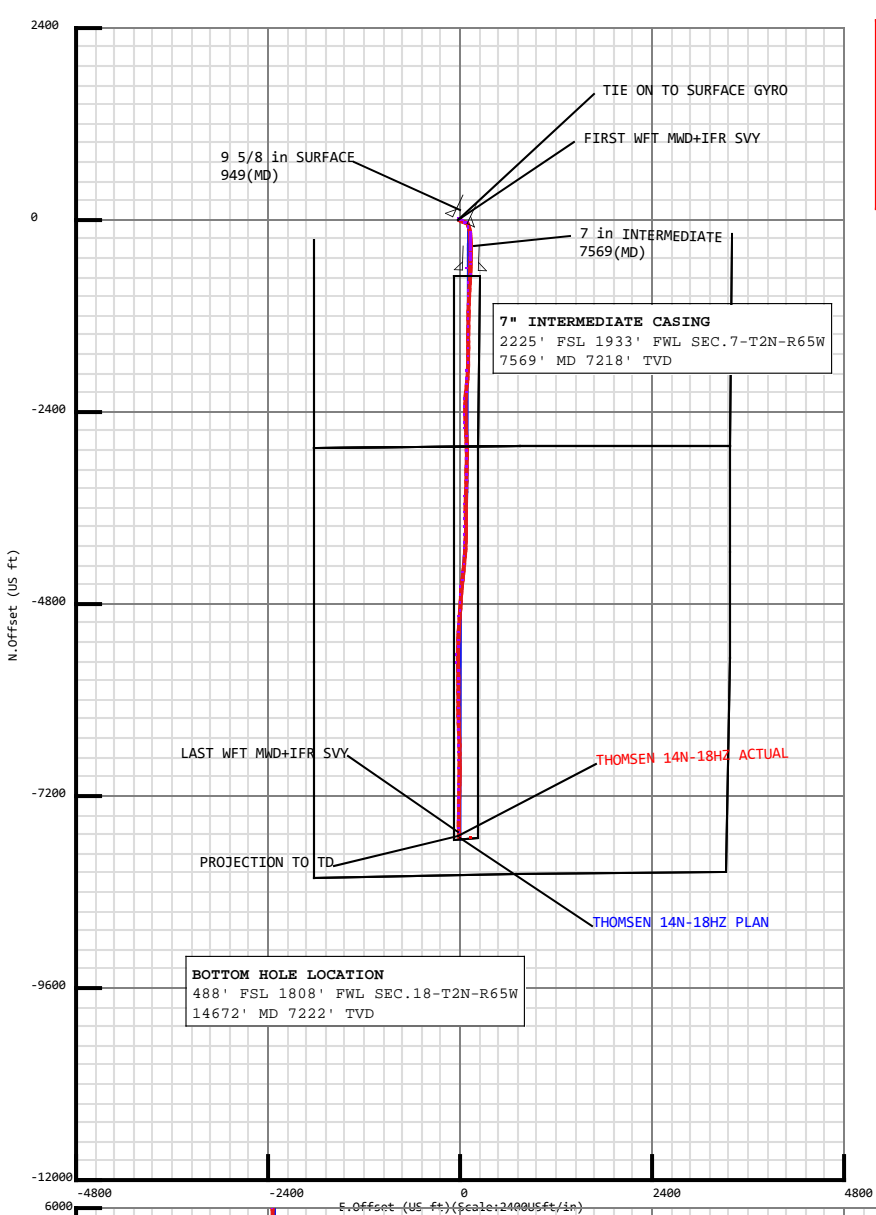
SECTION 4

SLIDE SHEET REPORTS

SECTION 5

ADDITIONAL REPORTS

SECTION 6



Survey Data for THOMSEN 14N-18HZ

**Field: Wattenberg**  
 Map Unit: USFt Vertical Reference Datum (VRD): MeanSeaLevel  
 Projected Coordinate System: NAD83/ColoradoNorth(ftUS)

**Site: THOMSEN 6-7HZ Pad**  
 Unit: USFeet TVD Reference:  
 Company Name:  
 Position: Northing: 1299840.67USft Latitude: 40.153754°  
 Easting: 3220948.57USft Longitude: -104.709538°  
 North Reference: True Grid Convergence: 0.51°  
 Elevation Above VRD: 4952.00USft

**Slot: THOMSEN 14N-18HZ**  
 Position:  
 Offset is from Site centre  
 +N/-S: 0.37USft Northing: 1299841.31USft Latitude: 40.153755°  
 +E/-W: 30.19USft Easting: 3220978.76USft Longitude: -104.709430°  
 Elevation Above VRD: 4951.00USft



**Casing Point Information:**

Name	MD (USft)	TVD (USft)
95/8inSURFACE	949.00	948.99
7inINTERMEDIATE	7569.00	7218.23

**Formation Point Information:**

Name	TVD Elevation (USft)	MD (USft)
SUSSEX	4646.00	330.00 4652.89
SHARONSPRINGS	7021.00	-2045.00 7058.00
TOPNIOBRARA	7091.00	-2115.00 7155.75
NIOBRARAB	7116.00	-2140.00 7195.55
NIOBRARAC	7219.00	-2243.00 7447.43

**Target Set Information:**

Name: 14N-18HZ

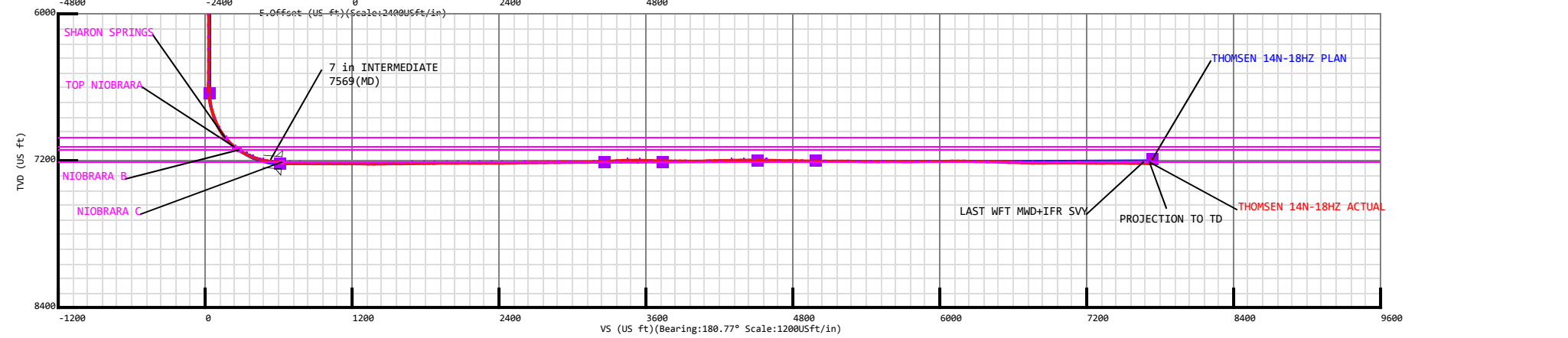
Position offsets from Slot centre

Name	TVD (USft)	+N/-S (USft)	+E/-W (USft)	Lat (°)	Long (°)
14N-18HZPBHL	7196.00	-7748.24	133.10	40.132485	-104.708954
14N-18HZRev.PBHL	7196.00	-7748.24	5.00	40.132485	-104.709412

Survey Data for THOMSEN 14N-18HZ

**Survey Point Information:**  
 DogLeg Severity Unit: °/100.00ft

MD (USft)	Inc (°)	Az (°)	TVD (USft)	+N/-S (USft)	+E/-W (USft)	VSec (USft)	DLS (DLSU)	Toolface (°)	Build (DLSU)	Turn (DLSU)	Annotation
865.00	0.19	188.07	864.99	-1.30	-0.95	1.32	0.66	136.6L	-0.15	-179.73	TIE ON TO SURFACE GYRO
1134.00	0.22	239.90	1133.99	-2.00	-1.46	2.02	0.07	107.4R	0.01	19.27	FIRST WFT MWD+IFR SVY
14621.00	89.75	177.57	7222.34	-7671.58	-10.38	7671.02	1.14	35.5R	0.92	0.66	LAST WFT MWD+IFR SVY
14672.00	90.22	177.91	7222.35	-7722.54	-8.37	7721.95	1.14	35.9R	0.92	0.67	PROJECTION TO TD





## FINAL SURVEYS

---



**5D Survey Report****Andarko Petroleum**

**Field Name:** *Wattenberg*  
**Site Name:** *THOMSEN 6-7HZ Pad*  
**Well Name:** *THOMSEN 14N-18HZ*  
**Survey:** *Definitive Survey*





## Surveys for the THOMSEN 14N-18HZ

<b>Site Name</b> THOMSEN 6-7HZ Pad	<b>Units :</b> US ft	<b>North Reference :</b> True	<b>Convergence Angle :</b> 0.51	
	<b>Position</b>	<b>Northing :</b> 1299840.67 US ft	<b>Latitude :</b> 40.153754	
		<b>Easting :</b> 3220948.57 US ft	<b>Longitude :</b> -104.709538	
	<b>Elevation above:</b> 4952.00 US ft			
	<b>Comment :</b>			
<b>Slot Name</b> THOMSEN 14N-18HZ	<b>Position (Offsets relative to Site Centre)</b>			
	<b>+N / -S :</b> 0.37 US ft	<b>Northing :</b> 1299841.31 US ft	<b>Latitude :</b> 40.153755	
	<b>+E / -W :</b> 30.19 US ft	<b>Easting :</b> 3220978.76 US ft	<b>Longitude :</b> -104.709430	
	<b>Elevation above :</b> 4951.00 US ft			
	<b>Comment :</b>			
<b>Well Name</b> THOMSEN 14N-18HZ	<b>Type :</b> Main well	<b>UWI :</b>		
	<b>Rig Height</b> <i>Well TVD Reference</i> : 25.00 US ft	<b>Comment :</b>		
	<b>Relative to :</b> 4976.00 US ft	<b>Closure Azimuth :</b> 180.062°		
	<b>Closure Distance :</b> 7722.54 US ft	<b>Vertical Section (Position of Origin Relative to Slot )</b>		
	<b>+N / -S :</b> 0.00 US ft	<b>+E / -W :</b> 0.00 US ft	<b>Az :</b> 180.77°	

<b>Survey Name :Definitive Survey</b>			
<b>Date :</b> 04/Mar/2013	<b>Survey Tool :</b>	<b>Comment :</b>	<b>Company :</b>
<b>Magnetic Model</b>			
<b>Model Name:</b> BGGM	<b>Date:</b> 26/Feb/2013	<b>Field Strength:</b> 52775.5 nT	<b>Declination:</b> 8.64°
			<b>Dip:</b> 66.78°

## 5D Survey Report

Survey Tool Ranges			
Name	Start MD (us ft)	End MD (us ft)	Source Survey
NSG Static GMS	0.00	865.00	SURFACE GYRO
MWD + IFR	865.00	14672.00	MWD+IFR

## Well path created using minimum curvature

Survey Points (Relative to centre, TVD relative to Well TVD Reference )											
MD (US ft)	Inc (°)	Az (°)	TVD (US ft)	N.Offset (US ft)	E.Offset (US ft)	Latitude (°)	Longitude (°)	DLS (°/100 US ft)	CL (US ft)	VS (US ft)	Comment
0.00	0.00	0.00	0.00	0.00	0.00	40.153755	-104.709430	0.00	0.00	-0.00	
25.00	0.00	0.00	25.00	0.00	0.00	40.153755	-104.709430	0.00	25.00	-0.00	
125.00	0.44	240.77	125.00	-0.19	-0.34	40.153754	-104.709431	0.44	100.00	0.19	
225.00	0.23	350.81	225.00	-0.18	-0.70	40.153755	-104.709433	0.56	100.00	0.19	
325.00	0.20	69.32	325.00	0.08	-0.57	40.153755	-104.709432	0.27	100.00	-0.08	
425.00	0.22	144.48	425.00	-0.01	-0.30	40.153755	-104.709431	0.26	100.00	0.02	
525.00	0.25	174.34	525.00	-0.39	-0.16	40.153754	-104.709431	0.12	100.00	0.39	
625.00	0.23	220.40	625.00	-0.76	-0.27	40.153753	-104.709431	0.19	100.00	0.76	
725.00	0.21	221.06	724.99	-1.05	-0.52	40.153752	-104.709432	0.02	100.00	1.05	
825.00	0.25	259.96	824.99	-1.22	-0.86	40.153752	-104.709433	0.16	100.00	1.23	
865.00	0.19	188.07	864.99	-1.30	-0.95	40.153751	-104.709433	0.66	40.00	1.32	TIE ON TO SURFACE GYRO
1134.00	0.22	239.90	1133.99	-2.00	-1.46	40.153750	-104.709435	0.07	269.00	2.02	FIRST WFT MWD+IFR SVY
1316.00	0.21	236.39	1315.99	-2.36	-2.04	40.153749	-104.709437	0.01	182.00	2.39	
1408.00	0.35	300.04	1407.99	-2.32	-2.43	40.153749	-104.709439	0.35	92.00	2.35	
1591.00	0.07	249.63	1590.99	-2.08	-3.01	40.153749	-104.709441	0.17	183.00	2.12	
1775.00	0.41	283.52	1774.99	-1.96	-3.76	40.153750	-104.709443	0.19	184.00	2.01	
1867.00	0.53	259.17	1866.98	-1.96	-4.50	40.153750	-104.709446	0.25	92.00	2.02	
1958.00	0.64	263.17	1957.98	-2.10	-5.42	40.153749	-104.709449	0.13	91.00	2.18	
2141.00	1.13	265.51	2140.96	-2.37	-8.23	40.153749	-104.709459	0.27	183.00	2.48	
2232.00	0.47	208.15	2231.95	-2.77	-9.30	40.153747	-104.709463	1.06	91.00	2.89	
2325.00	0.07	47.46	2324.95	-3.06	-9.44	40.153747	-104.709464	0.58	93.00	3.19	
2510.00	0.56	270.08	2509.94	-2.99	-10.26	40.153747	-104.709467	0.33	185.00	3.12	
2602.00	0.14	63.24	2601.94	-2.93	-10.61	40.153747	-104.709468	0.75	92.00	3.08	
2694.00	0.30	208.83	2693.94	-3.09	-10.62	40.153747	-104.709468	0.46	92.00	3.24	
2787.00	0.30	144.14	2786.94	-3.51	-10.60	40.153745	-104.709468	0.35	93.00	3.65	
2882.00	0.59	126.94	2881.94	-4.00	-10.06	40.153744	-104.709466	0.33	95.00	4.14	
2978.00	1.28	89.90	2977.93	-4.30	-8.59	40.153743	-104.709461	0.92	96.00	4.41	
3072.00	1.46	96.74	3071.90	-4.43	-6.36	40.153743	-104.709453	0.26	94.00	4.52	
3167.00	1.44	109.02	3166.87	-4.97	-4.03	40.153741	-104.709444	0.33	95.00	5.02	
3262.00	1.79	111.38	3261.83	-5.90	-1.52	40.153739	-104.709435	0.37	95.00	5.92	
3357.00	2.46	121.62	3356.77	-7.51	1.60	40.153734	-104.709424	0.81	95.00	7.48	
3452.00	3.60	111.45	3451.63	-9.67	6.11	40.153728	-104.709408	1.32	95.00	9.58	

## 5D Survey Report

Survey Points (Relative to centre, TVD relative to Well TVD Reference )											
MD (US ft)	Inc (°)	Az (°)	TVD (US ft)	N.Offset (US ft)	E.Offset (US ft)	Latitude (°)	Longitude (°)	DLS (°/100 US ft)	CL (US ft)	VS (US ft)	Comment
3547.00	4.41	111.77	3546.40	-12.11	12.28	40.153722	-104.709386	0.85	95.00	11.94	
3642.00	3.29	106.90	3641.18	-14.26	18.28	40.153716	-104.709365	1.23	95.00	14.01	
3737.00	3.69	111.19	3736.01	-16.16	23.74	40.153711	-104.709345	0.50	95.00	15.83	
3832.00	4.01	114.95	3830.79	-18.66	29.60	40.153704	-104.709324	0.43	95.00	18.26	
3927.00	4.50	109.01	3925.53	-21.28	36.14	40.153697	-104.709301	0.69	95.00	20.79	
4022.00	4.85	107.44	4020.22	-23.69	43.49	40.153690	-104.709274	0.39	95.00	23.11	
4116.00	6.14	109.91	4113.78	-26.60	52.01	40.153682	-104.709244	1.39	94.00	25.90	
4211.00	5.30	111.67	4208.31	-29.95	60.87	40.153673	-104.709212	0.90	95.00	29.13	
4306.00	5.07	116.86	4302.92	-33.46	68.69	40.153663	-104.709184	0.55	95.00	32.54	
4400.00	3.52	112.53	4396.65	-36.45	75.06	40.153655	-104.709161	1.68	94.00	35.43	
4495.00	2.82	110.87	4491.51	-38.40	79.94	40.153650	-104.709144	0.74	95.00	37.32	
4590.00	1.68	119.72	4586.43	-39.92	83.33	40.153645	-104.709132	1.25	95.00	38.80	
4684.00	1.38	128.05	4680.40	-41.30	85.42	40.153642	-104.709124	0.40	94.00	40.15	
4779.00	0.78	147.26	4775.38	-42.55	86.67	40.153638	-104.709120	0.73	95.00	41.38	
4873.00	0.84	44.86	4869.38	-42.60	87.50	40.153638	-104.709117	1.34	94.00	41.42	
4968.00	0.89	312.38	4964.37	-41.61	87.45	40.153641	-104.709117	1.32	95.00	40.43	
5063.00	0.74	321.32	5059.36	-40.63	86.52	40.153643	-104.709120	0.21	95.00	39.47	
5157.00	0.84	29.67	5153.35	-39.56	86.48	40.153646	-104.709121	0.95	94.00	38.39	
5252.00	1.73	61.43	5248.33	-38.27	88.09	40.153650	-104.709115	1.17	95.00	37.08	
5347.00	1.73	49.06	5343.29	-36.64	90.43	40.153654	-104.709106	0.39	95.00	35.42	
5442.00	1.60	49.01	5438.25	-34.83	92.51	40.153659	-104.709099	0.14	95.00	33.59	
5536.00	1.26	40.43	5532.22	-33.19	94.17	40.153664	-104.709093	0.43	94.00	31.92	
5631.00	1.10	64.72	5627.20	-32.00	95.67	40.153667	-104.709088	0.55	95.00	30.71	
5726.00	0.70	55.00	5722.19	-31.28	96.97	40.153669	-104.709083	0.45	95.00	29.97	
5820.00	0.74	7.10	5816.18	-30.35	97.52	40.153672	-104.709081	0.62	94.00	29.03	
5915.00	0.49	273.90	5911.17	-29.71	97.19	40.153673	-104.709082	0.96	95.00	28.40	
6010.00	1.70	265.66	6006.16	-29.79	95.38	40.153673	-104.709089	1.28	95.00	28.51	
6104.00	0.88	228.91	6100.13	-30.37	93.45	40.153672	-104.709096	1.20	94.00	29.11	
6199.00	0.22	130.34	6195.13	-30.97	93.04	40.153670	-104.709097	0.99	95.00	29.71	
6294.00	0.25	5.18	6290.13	-30.88	93.19	40.153670	-104.709097	0.44	95.00	29.62	
6388.00	0.70	311.62	6384.13	-30.29	92.78	40.153672	-104.709098	0.62	94.00	29.04	
6483.00	0.35	27.84	6479.12	-29.65	92.48	40.153674	-104.709099	0.74	95.00	28.41	
6578.00	0.35	33.78	6574.12	-29.15	92.78	40.153675	-104.709098	0.04	95.00	27.90	
6672.00	5.54	183.81	6667.98	-33.45	92.64	40.153663	-104.709099	6.22	94.00	32.20	
6767.00	14.59	162.93	6761.45	-49.50	95.85	40.153619	-104.709087	10.12	95.00	48.21	
6861.00	20.79	160.01	6850.96	-76.52	105.04	40.153545	-104.709054	6.66	94.00	75.10	
6956.00	29.76	162.74	6936.78	-114.96	117.83	40.153439	-104.709008	9.52	95.00	113.37	
7050.00	39.67	175.78	7014.06	-167.36	126.99	40.153296	-104.708976	13.12	94.00	165.64	
7082.00	43.74	177.58	7037.94	-188.61	128.21	40.153237	-104.708971	13.26	32.00	186.87	
7114.00	46.15	177.14	7060.59	-211.19	129.25	40.153175	-104.708968	7.59	32.00	209.43	
7145.00	49.40	175.77	7081.42	-234.10	130.68	40.153112	-104.708962	10.98	31.00	232.32	

## 5D Survey Report

Survey Points (Relative to centre, TVD relative to Well TVD Reference )											
MD (US ft)	Inc (°)	Az (°)	TVD (US ft)	N.Offset (US ft)	E.Offset (US ft)	Latitude (°)	Longitude (°)	DLS (°/100 US ft)	CL (US ft)	VS (US ft)	Comment
7177.00	53.29	176.52	7101.41	-259.03	132.36	40.153044	-104.708956	12.29	32.00	257.22	
7208.00	57.68	177.20	7118.97	-284.52	133.75	40.152974	-104.708951	14.28	31.00	282.70	
7240.00	62.22	178.04	7134.99	-312.19	134.90	40.152898	-104.708947	14.37	32.00	310.35	
7271.00	64.03	179.61	7149.00	-339.84	135.46	40.152822	-104.708945	7.38	31.00	337.98	
7303.00	66.48	180.65	7162.40	-368.89	135.39	40.152742	-104.708946	8.21	32.00	367.04	
7334.00	69.58	180.86	7173.99	-397.64	135.01	40.152663	-104.708947	10.02	31.00	395.79	
7366.00	73.13	181.12	7184.22	-427.95	134.49	40.152580	-104.708949	11.12	32.00	426.10	
7397.00	76.09	182.00	7192.45	-457.82	133.67	40.152498	-104.708952	9.93	31.00	455.98	
7429.00	78.11	182.03	7199.59	-488.99	132.58	40.152413	-104.708956	6.31	32.00	487.17	
7460.00	80.46	181.33	7205.36	-519.44	131.68	40.152329	-104.708959	7.90	31.00	517.62	
7505.00	82.99	181.07	7211.83	-563.96	130.75	40.152207	-104.708962	5.65	45.00	562.15	
7635.00	88.15	182.70	7221.87	-693.45	126.48	40.151851	-104.708978	4.16	130.00	691.69	
7727.00	89.01	182.83	7224.15	-785.31	122.05	40.151599	-104.708993	0.95	92.00	783.60	
7818.00	89.91	182.88	7225.01	-876.19	117.51	40.151350	-104.709010	0.99	91.00	874.54	
7910.00	89.91	182.53	7225.15	-968.09	113.17	40.151097	-104.709025	0.38	92.00	966.48	
8002.00	89.56	181.47	7225.58	-1060.03	109.96	40.150845	-104.709037	1.21	92.00	1058.46	
8094.00	90.62	181.72	7225.43	-1152.00	107.40	40.150593	-104.709046	1.18	92.00	1150.45	
8184.00	89.01	180.74	7225.72	-1241.97	105.47	40.150346	-104.709053	2.09	90.00	1240.44	
8277.00	89.32	180.73	7227.08	-1334.95	104.28	40.150090	-104.709057	0.33	93.00	1333.43	
8368.00	91.17	181.43	7226.69	-1425.93	102.56	40.149841	-104.709063	2.17	91.00	1424.43	
8460.00	89.94	179.23	7225.80	-1517.92	102.03	40.149588	-104.709065	2.74	92.00	1516.41	
8551.00	90.55	180.43	7225.41	-1608.92	102.30	40.149338	-104.709064	1.48	91.00	1607.40	
8643.00	90.56	180.54	7224.52	-1700.91	101.52	40.149086	-104.709067	0.12	92.00	1699.39	
8735.00	90.97	180.41	7223.29	-1792.90	100.76	40.148833	-104.709070	0.47	92.00	1791.38	
8827.00	90.68	182.94	7221.96	-1884.84	98.07	40.148581	-104.709079	2.77	92.00	1883.35	
8919.00	90.74	183.78	7220.82	-1976.67	92.68	40.148329	-104.709098	0.92	92.00	1975.25	
9010.00	90.25	186.26	7220.04	-2067.31	84.72	40.148080	-104.709127	2.78	91.00	2065.99	
9100.00	89.63	185.70	7220.13	-2156.82	75.34	40.147834	-104.709160	0.93	90.00	2155.62	
9192.00	89.75	182.27	7220.63	-2248.59	68.95	40.147582	-104.709183	3.73	92.00	2247.46	
9284.00	90.53	180.76	7220.41	-2340.55	66.52	40.147330	-104.709192	1.85	92.00	2339.44	
9377.00	89.75	177.92	7220.18	-2433.53	67.59	40.147075	-104.709188	3.17	93.00	2432.41	
9470.00	91.67	177.83	7219.03	-2526.46	71.04	40.146820	-104.709176	2.07	93.00	2525.28	
9562.00	91.30	177.35	7216.64	-2618.35	74.90	40.146567	-104.709162	0.66	92.00	2617.10	
9653.00	89.94	176.86	7215.66	-2709.22	79.50	40.146318	-104.709146	1.59	91.00	2707.91	
9746.00	90.93	177.98	7214.95	-2802.12	83.69	40.146063	-104.709131	1.61	93.00	2800.74	
9839.00	90.19	179.32	7214.04	-2895.09	85.88	40.145808	-104.709123	1.65	93.00	2893.67	
9933.00	90.12	181.54	7213.79	-2989.08	85.17	40.145550	-104.709125	2.36	94.00	2987.67	
10028.00	90.06	181.43	7213.64	-3084.05	82.71	40.145289	-104.709134	0.13	95.00	3082.66	
10122.00	93.08	181.12	7211.06	-3177.98	80.62	40.145031	-104.709142	3.23	94.00	3176.61	
10217.00	92.96	181.32	7206.06	-3272.82	78.60	40.144771	-104.709149	0.25	95.00	3271.47	
10312.00	92.66	181.53	7201.40	-3367.68	76.24	40.144510	-104.709157	0.39	95.00	3366.35	

## 5D Survey Report

Survey Points (Relative to centre, TVD relative to Well TVD Reference )											
MD (US ft)	Inc (°)	Az (°)	TVD (US ft)	N.Offset (US ft)	E.Offset (US ft)	Latitude (°)	Longitude (°)	DLS (°/100 US ft)	CL (US ft)	VS (US ft)	Comment
10406.00	90.62	181.67	7198.71	-3461.60	73.61	40.144252	-104.709167	2.18	94.00	3460.30	
10501.00	89.63	180.44	7198.50	-3556.58	71.87	40.143992	-104.709173	1.66	95.00	3555.29	
10595.00	87.41	179.16	7200.93	-3650.54	72.19	40.143734	-104.709172	2.73	94.00	3649.24	
10690.00	89.21	179.00	7203.73	-3745.48	73.72	40.143473	-104.709166	1.90	95.00	3744.16	
10785.00	90.37	180.06	7204.08	-3840.48	74.50	40.143212	-104.709164	1.65	95.00	3839.13	
10879.00	88.46	181.25	7205.04	-3934.46	73.42	40.142954	-104.709167	2.39	94.00	3933.12	
10974.00	91.05	182.16	7205.45	-4029.41	70.60	40.142694	-104.709177	2.89	95.00	4028.10	
11068.00	92.04	183.07	7202.91	-4123.27	66.31	40.142436	-104.709193	1.43	94.00	4122.01	
11163.00	91.42	185.34	7200.04	-4217.97	59.35	40.142176	-104.709218	2.48	95.00	4216.79	
11258.00	90.92	185.47	7198.10	-4312.53	50.40	40.141917	-104.709250	0.54	95.00	4311.46	
11352.00	89.45	185.63	7197.80	-4406.08	41.31	40.141660	-104.709282	1.57	94.00	4405.13	
11447.00	91.17	187.19	7197.29	-4500.48	30.70	40.141401	-104.709320	2.44	95.00	4499.66	
11541.00	87.84	185.37	7198.10	-4593.90	20.42	40.141144	-104.709357	4.04	94.00	4593.21	
11636.00	89.63	183.39	7200.20	-4688.59	13.17	40.140884	-104.709383	2.81	95.00	4687.99	
11731.00	88.58	182.85	7201.68	-4783.43	8.00	40.140624	-104.709401	1.24	95.00	4782.89	
11825.00	89.51	184.77	7203.25	-4877.21	1.76	40.140366	-104.709424	2.27	94.00	4876.74	
11920.00	89.14	184.19	7204.37	-4971.91	-5.66	40.140106	-104.709450	0.72	95.00	4971.54	
12014.00	89.38	183.16	7205.58	-5065.71	-11.69	40.139849	-104.709472	1.13	94.00	5065.41	
12109.00	90.86	183.09	7205.38	-5160.56	-16.87	40.139589	-104.709490	1.56	95.00	5160.32	
12204.00	88.83	181.97	7205.64	-5255.46	-21.06	40.139328	-104.709505	2.44	95.00	5255.27	
12298.00	88.70	181.94	7207.66	-5349.39	-24.27	40.139070	-104.709517	0.14	94.00	5349.23	
12393.00	90.00	180.23	7208.74	-5444.36	-26.06	40.138809	-104.709523	2.26	95.00	5444.22	
12487.00	91.36	179.16	7207.63	-5538.35	-25.56	40.138551	-104.709521	1.84	94.00	5538.19	
12582.00	89.14	177.85	7207.21	-5633.31	-23.09	40.138291	-104.709513	2.71	95.00	5633.11	
12677.00	89.57	179.13	7208.28	-5728.26	-20.58	40.138030	-104.709504	1.42	95.00	5728.02	
12771.00	91.42	180.85	7207.47	-5822.25	-20.57	40.137772	-104.709504	2.69	94.00	5822.00	
12866.00	90.06	180.18	7206.24	-5917.24	-21.42	40.137511	-104.709507	1.60	95.00	5916.99	
12961.00	90.00	179.68	7206.19	-6012.24	-21.30	40.137251	-104.709506	0.53	95.00	6011.98	
13055.00	90.99	179.24	7205.38	-6106.23	-20.42	40.136993	-104.709503	1.15	94.00	6105.95	
13150.00	88.82	179.00	7205.54	-6201.21	-18.96	40.136732	-104.709498	2.30	95.00	6200.91	
13244.00	88.52	178.14	7207.72	-6295.16	-16.61	40.136474	-104.709489	0.97	94.00	6294.81	
13339.00	89.26	177.90	7209.56	-6390.08	-13.33	40.136213	-104.709478	0.82	95.00	6389.68	
13434.00	88.21	177.73	7211.66	-6484.99	-9.71	40.135953	-104.709465	1.12	95.00	6484.53	
13528.00	87.91	178.92	7214.84	-6578.89	-6.96	40.135695	-104.709455	1.30	94.00	6578.39	
13623.00	88.33	179.48	7217.96	-6673.83	-5.64	40.135434	-104.709450	0.74	95.00	6673.30	
13717.00	89.51	179.37	7219.73	-6767.81	-4.70	40.135176	-104.709447	1.26	94.00	6767.26	
13812.00	91.24	180.94	7219.11	-6862.80	-4.95	40.134916	-104.709448	2.46	95.00	6862.25	
13906.00	89.51	180.00	7218.49	-6956.79	-5.72	40.134658	-104.709450	2.09	94.00	6956.24	
14001.00	90.12	181.74	7218.80	-7051.77	-7.17	40.134397	-104.709456	1.94	95.00	7051.23	
14096.00	89.81	181.01	7218.86	-7146.75	-9.45	40.134136	-104.709464	0.83	95.00	7146.23	
14190.00	89.26	182.15	7219.62	-7240.70	-12.04	40.133878	-104.709473	1.35	94.00	7240.21	

## 5D Survey Report

Survey Points (Relative to centre, TVD relative to Well TVD Reference )											
MD (US ft)	Inc (°)	Az (°)	TVD (US ft)	N.Offset (US ft)	E.Offset (US ft)	Latitude (°)	Longitude (°)	DLS (°/100 US ft)	CL (US ft)	VS (US ft)	Comment
14285.00	89.91	179.71	7220.31	-7335.68	-13.58	40.133618	-104.709479	2.66	95.00	7335.20	
14379.00	90.25	180.64	7220.18	-7429.68	-13.87	40.133359	-104.709480	1.05	94.00	7429.20	
14474.00	89.21	180.41	7220.62	-7524.67	-14.74	40.133099	-104.709483	1.12	95.00	7524.19	
14568.00	89.26	177.22	7221.88	-7618.63	-12.79	40.132841	-104.709476	3.39	94.00	7618.12	
14621.00	89.75	177.57	7222.34	-7671.58	-10.38	40.132695	-104.709467	1.14	53.00	7671.02	LAST WFT MWD+IFR SVY
14672.00	90.22	177.91	7222.35	-7722.54	-8.37	40.132556	-104.709460	1.14	51.00	7721.95	PROJECTION TO TD



## DAILY ACTIVITIES

---