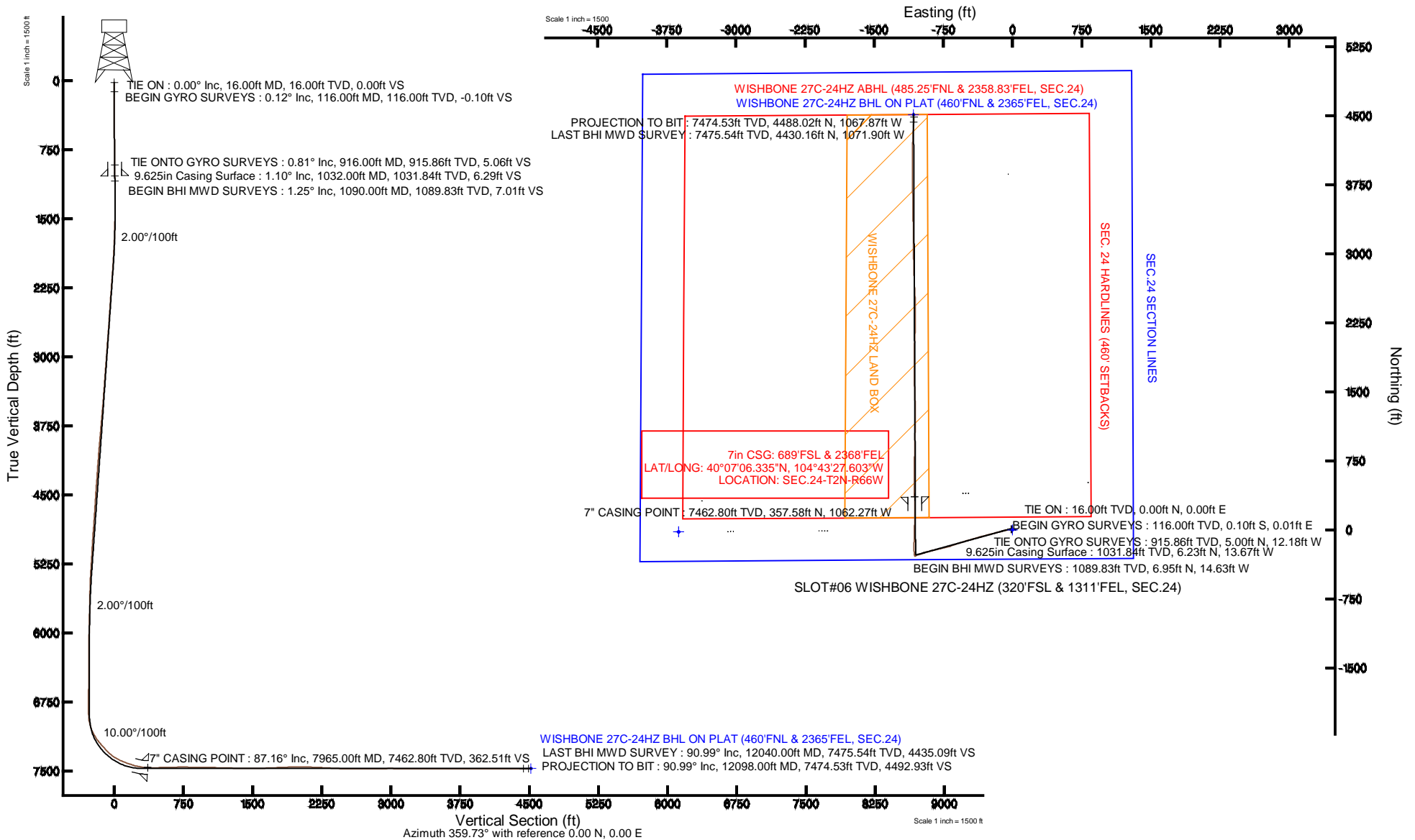


KERR-MCGEE OIL & GAS ONSHORE LP

Location: COLORADO Slot: SLOT#06 WISHBONE 27C-24HZ (320'FSL & 1311'FEL, SEC.24)
 Field: WELD COUNTY (KERR MCGEE) Well: WISHBONE 27C-24HZ
 Facility: SEC.24-T2N-R66W Wellbore: WISHBONE 27C-24HZ PWB

Plot reference wellpath is WISHBONE 27C-24HZ (REV-C.0) PWP

True vertical depths are referenced to XTREME 20 (RKB)	Grid System: NAD83 / Lambert Colorado SP, Northern Zone (501), US feet
Measured depths are referenced to XTREME 20 (RKB)	North Reference: True north
XTREME 20 (RKB) to Mean Sea Level: 5088 feet	Scale: True distance
Mean Sea Level to Mud line (At Slot: SLOT#06 WISHBONE 27C-24HZ (320'FSL & 1311'FEL, SEC.24)): 0 feet	Depths are in feet
Coordinates are in feet referenced to Slot	Created by: robale01 on 10/Jul/2013





Actual Wellpath Report

WISHBONE 27C-24HZ AWP

Page 1 of 7



REFERENCE WELLPATH IDENTIFICATION

Operator	KERR-MCGEE OIL & GAS ONSHORE LP	Slot	SLOT#06 WISHBONE 27C-24HZ (320'FSL & 1311'FEL, SEC.24)
Area	COLORADO	Well	WISHBONE 27C-24HZ
Field	WELD COUNTY (KERR MCGEE)	Wellbore	WISHBONE 27C-24HZ AWP
Facility	SEC.24-T2N-R66W		

REPORT SETUP INFORMATION

Projection System	NAD83 / Lambert Colorado SP, Northern Zone (501), US feet	Software System	WellArchitect® 4.0.0
North Reference	True	User	Robiale01
Scale	0.99996	Report Generated	10/Jul/2013 at 14:44
Convergence at slot	n/a	Database/Source file	WA_ANADARKO/WISHBONE_27C-24HZ_AWP.xml

WELLPATH LOCATION

	Local coordinates		Grid coordinates		Geographic coordinates	
	North[ft]	East[ft]	Easting[US ft]	Northing[US ft]	Latitude	Longitude
Slot Location	21.82	3620.49	3217990.74	1286587.34	40°07'02.802"N	104°43'13.930"W
Facility Reference Pt			3214370.72	1286534.23	40°07'02.589"N	104°44'00.532"W
Field Reference Pt			3197771.84	1268891.29	40°04'09.600"N	104°47'36.000"W

WELLPATH DATUM

Calculation method	Minimum curvature	XTREME 20 (RKB) to Facility Vertical Datum	5068.00ft
Horizontal Reference Pt	Slot	XTREME 20 (RKB) to Mean Sea Level	5068.00ft
Vertical Reference Pt	XTREME 20 (RKB)	XTREME 20 (RKB) to Mud Line at Slot (SLOT#06 WISHBONE 27C-24HZ (320'FSL & 1311'FEL, SEC.24))	5068.00ft
MD Reference Pt	XTREME 20 (RKB)	Section Origin	N 0.00, E 0.00 ft
Field Vertical Reference	Mean Sea Level	Section Azimuth	359.73°



Actual Wellpath Report

WISHBONE 27C-24HZ AWP

Page 2 of 7



REFERENCE WELLPATH IDENTIFICATION

Operator	KERR-MCGEE OIL & GAS ONSHORE LP	Slot	SLOT#06 WISHBONE 27C-24HZ (320'FSL & 1311'FEL, SEC.24)
Area	COLORADO	Well	WISHBONE 27C-24HZ
Field	WELD COUNTY (KERR MCGEE)	Wellbore	WISHBONE 27C-24HZ AWP
Facility	SEC.24-T2N-R66W		

WELLPATH DATA (154 stations) † = interpolated/extrapolated station

MD [ft]	Inclination [°]	Azimuth [°]	TVD [ft]	Vert Sect [ft]	North [ft]	East [ft]	Latitude	Longitude	DLS [°/100ft]	Comments
0.00†	0.000	175.220	0.00	0.00	0.00	0.00	40°07'02.802"N	104°43'13.930"W	0.00	
16.00	0.000	175.220	16.00	0.00	0.00	0.00	40°07'02.802"N	104°43'13.930"W	0.00	TIE ON
116.00	0.120	175.220	116.00	-0.10	-0.10	0.01	40°07'02.801"N	104°43'13.930"W	0.12	BEGIN GYRO SURVEYS
216.00	0.540	314.740	216.00	0.12	0.12	-0.32	40°07'02.803"N	104°43'13.934"W	0.64	
316.00	0.640	248.140	315.99	0.25	0.25	-1.17	40°07'02.804"N	104°43'13.945"W	0.65	
416.00	1.050	271.650	415.98	0.08	0.07	-2.60	40°07'02.803"N	104°43'13.964"W	0.53	
516.00	0.880	288.150	515.97	0.35	0.33	-4.25	40°07'02.805"N	104°43'13.985"W	0.32	
616.00	1.520	310.420	615.95	1.46	1.43	-5.99	40°07'02.816"N	104°43'14.007"W	0.78	
716.00	1.690	301.620	715.91	3.10	3.06	-8.25	40°07'02.832"N	104°43'14.036"W	0.30	
816.00	1.290	288.070	815.87	4.23	4.19	-10.58	40°07'02.843"N	104°43'14.066"W	0.53	
916.00	0.810	311.720	915.86	5.06	5.00	-12.18	40°07'02.851"N	104°43'14.087"W	0.64	TIE ONTO GYRO SURVEYS
1090.00	1.250	306.240	1089.83	7.01	6.95	-14.63	40°07'02.871"N	104°43'14.118"W	0.26	BEGIN BHI MWD SURVEYS
1156.00	1.190	300.080	1155.81	7.79	7.71	-15.80	40°07'02.878"N	104°43'14.133"W	0.22	
1247.00	1.090	299.090	1246.80	8.69	8.61	-17.38	40°07'02.887"N	104°43'14.154"W	0.11	
1335.00	1.550	278.410	1334.77	9.28	9.19	-19.28	40°07'02.893"N	104°43'14.178"W	0.74	
1420.00	3.400	251.410	1419.69	8.66	8.55	-22.81	40°07'02.887"N	104°43'14.224"W	2.52	
1505.00	5.190	257.300	1504.45	7.04	6.91	-28.95	40°07'02.870"N	104°43'14.303"W	2.17	
1590.00	6.530	259.570	1589.01	5.36	5.19	-37.45	40°07'02.853"N	104°43'14.412"W	1.60	
1675.00	7.770	257.970	1673.34	3.33	3.11	-47.83	40°07'02.833"N	104°43'14.546"W	1.48	
1760.00	9.360	255.030	1757.39	0.41	0.13	-60.13	40°07'02.803"N	104°43'14.704"W	1.94	
1846.00	11.810	254.070	1841.92	-3.74	-4.09	-75.35	40°07'02.762"N	104°43'14.900"W	2.86	
1931.00	13.000	254.780	1924.94	-8.56	-8.99	-92.94	40°07'02.713"N	104°43'15.126"W	1.41	
2016.00	14.800	255.100	2007.44	-13.77	-14.29	-112.66	40°07'02.661"N	104°43'15.380"W	2.12	
2101.00	16.190	255.330	2089.35	-19.46	-20.09	-134.61	40°07'02.604"N	104°43'15.663"W	1.64	
2186.00	16.250	255.870	2170.97	-25.26	-25.99	-157.61	40°07'02.545"N	104°43'15.959"W	0.19	
2272.00	16.280	254.890	2253.53	-31.23	-32.07	-180.91	40°07'02.485"N	104°43'16.259"W	0.32	
2357.00	16.000	255.740	2335.18	-37.11	-38.06	-203.77	40°07'02.426"N	104°43'16.553"W	0.43	
2442.00	15.760	255.120	2416.93	-42.86	-43.91	-226.28	40°07'02.368"N	104°43'16.843"W	0.35	
2528.00	15.200	255.490	2499.81	-48.58	-49.73	-248.48	40°07'02.311"N	104°43'17.128"W	0.66	
2612.00	14.840	255.870	2580.94	-53.87	-55.12	-269.57	40°07'02.257"N	104°43'17.400"W	0.44	
2698.00	15.640	254.440	2663.92	-59.56	-60.92	-291.42	40°07'02.200"N	104°43'17.681"W	1.03	
2783.00	15.110	254.450	2745.88	-65.51	-66.96	-313.13	40°07'02.140"N	104°43'17.961"W	0.62	
2868.00	16.360	255.090	2827.69	-71.45	-73.01	-335.38	40°07'02.080"N	104°43'18.247"W	1.48	
2954.00	16.090	255.360	2910.26	-77.47	-79.14	-358.61	40°07'02.020"N	104°43'18.546"W	0.33	
3039.00	15.750	254.270	2992.00	-83.47	-85.24	-381.11	40°07'01.960"N	104°43'18.836"W	0.53	
3124.00	15.580	254.070	3073.85	-89.63	-91.51	-403.19	40°07'01.898"N	104°43'19.120"W	0.21	
3209.00	15.590	254.750	3155.72	-95.67	-97.64	-425.19	40°07'01.837"N	104°43'19.403"W	0.22	
3294.00	15.300	253.960	3237.65	-101.67	-103.75	-446.99	40°07'01.777"N	104°43'19.683"W	0.42	
3379.00	15.020	252.680	3319.69	-107.95	-110.12	-468.28	40°07'01.714"N	104°43'19.958"W	0.51	
3465.00	16.340	254.660	3402.49	-114.36	-116.64	-490.58	40°07'01.649"N	104°43'20.245"W	1.66	
3550.00	16.080	253.620	3484.11	-120.74	-123.12	-513.41	40°07'01.585"N	104°43'20.538"W	0.46	
3635.00	15.780	252.540	3565.85	-127.42	-129.91	-535.73	40°07'01.518"N	104°43'20.826"W	0.50	
3720.00	15.120	251.080	3647.78	-134.39	-136.97	-557.24	40°07'01.448"N	104°43'21.103"W	0.90	
3806.00	15.890	253.600	3730.65	-141.24	-143.94	-579.15	40°07'01.380"N	104°43'21.385"W	1.19	
3891.00	15.310	252.220	3812.52	-147.86	-150.65	-600.99	40°07'01.313"N	104°43'21.666"W	0.81	



Actual Wellpath Report

WISHBONE 27C-24HZ AWP

Page 3 of 7



REFERENCE WELLPATH IDENTIFICATION

Operator	KERR-MCGEE OIL & GAS ONSHORE LP	Slot	SLOT#06 WISHBONE 27C-24HZ (320'FSL & 1311'FEL, SEC.24)
Area	COLORADO	Well	WISHBONE 27C-24HZ
Field	WELD COUNTY (KERR MCGEE)	Wellbore	WISHBONE 27C-24HZ AWB
Facility	SEC.24-T2N-R66W		

WELLPATH DATA (154 stations)

MD [ft]	Inclination [°]	Azimuth [°]	TVD [ft]	Vert Sect [ft]	North [ft]	East [ft]	Latitude	Longitude	DLS [°/100ft]	Comments
3976.00	14.710	249.430	3894.62	-154.98	-157.87	-621.78	40°07'01.242"N	104°43'21.933"W	1.10	
4061.00	14.460	251.200	3976.88	-162.10	-165.08	-641.93	40°07'01.171"N	104°43'22.193"W	0.60	
4147.00	14.430	250.220	4060.16	-169.09	-172.16	-662.18	40°07'01.101"N	104°43'22.453"W	0.29	
4232.00	15.010	252.950	4142.37	-175.80	-178.98	-682.67	40°07'01.033"N	104°43'22.717"W	1.06	
4317.00	15.400	257.700	4224.40	-181.34	-184.61	-704.22	40°07'00.978"N	104°43'22.994"W	1.54	
4402.00	16.970	255.970	4306.03	-186.64	-190.02	-727.29	40°07'00.924"N	104°43'23.291"W	1.93	
4487.00	17.020	256.150	4387.32	-192.51	-196.00	-751.40	40°07'00.865"N	104°43'23.602"W	0.09	
4572.00	16.710	256.130	4468.66	-198.31	-201.91	-775.34	40°07'00.807"N	104°43'23.910"W	0.36	
4657.00	16.530	257.410	4550.11	-203.77	-207.48	-799.01	40°07'00.752"N	104°43'24.214"W	0.48	
4743.00	16.150	256.790	4632.64	-209.06	-212.88	-822.59	40°07'00.698"N	104°43'24.518"W	0.49	
4828.00	15.930	256.700	4714.33	-214.33	-218.26	-845.45	40°07'00.645"N	104°43'24.812"W	0.26	
4913.00	15.440	254.970	4796.16	-219.85	-223.88	-867.73	40°07'00.589"N	104°43'25.099"W	0.80	
4998.00	15.590	254.240	4878.06	-225.78	-229.92	-889.65	40°07'00.530"N	104°43'25.381"W	0.29	
5083.00	14.270	254.730	4960.19	-231.55	-235.78	-910.75	40°07'00.472"N	104°43'25.653"W	1.56	
5168.00	11.990	254.090	5042.97	-236.64	-240.96	-929.35	40°07'00.421"N	104°43'25.892"W	2.69	
5253.00	11.850	252.800	5126.13	-241.56	-245.96	-946.18	40°07'00.371"N	104°43'26.109"W	0.35	
5338.00	11.360	250.980	5209.40	-246.80	-251.27	-962.43	40°07'00.319"N	104°43'26.318"W	0.72	
5424.00	10.410	251.390	5293.85	-251.97	-256.51	-977.80	40°07'00.267"N	104°43'26.516"W	1.11	
5509.00	10.040	251.880	5377.50	-256.65	-261.26	-992.12	40°07'00.220"N	104°43'26.700"W	0.45	
5594.00	8.760	254.860	5461.35	-260.59	-265.26	-1005.41	40°07'00.180"N	104°43'26.871"W	1.61	
5679.00	7.290	261.590	5545.52	-263.01	-267.74	-1016.99	40°07'00.156"N	104°43'27.020"W	2.05	
5764.00	6.040	260.130	5629.95	-264.52	-269.29	-1026.74	40°07'00.141"N	104°43'27.146"W	1.48	
5849.00	4.860	253.590	5714.56	-266.27	-271.08	-1034.60	40°07'00.123"N	104°43'27.247"W	1.57	
5934.00	3.210	246.280	5799.35	-268.22	-273.05	-1040.23	40°07'00.103"N	104°43'27.319"W	2.03	
6019.00	2.930	243.190	5884.23	-270.14	-274.99	-1044.35	40°07'00.084"N	104°43'27.372"W	0.38	
6105.00	1.850	224.020	5970.15	-272.11	-276.98	-1047.27	40°07'00.065"N	104°43'27.410"W	1.55	
6190.00	1.360	223.750	6055.12	-273.82	-278.69	-1048.92	40°07'00.048"N	104°43'27.431"W	0.58	
6275.00	0.260	170.790	6140.11	-274.74	-279.61	-1049.59	40°07'00.039"N	104°43'27.440"W	1.44	
6360.00	0.373	186.360	6225.11	-275.20	-280.08	-1049.59	40°07'00.034"N	104°43'27.440"W	0.17	
6445.00	0.480	226.540	6310.10	-275.72	-280.60	-1049.88	40°07'00.029"N	104°43'27.444"W	0.36	
6530.00	0.670	231.430	6395.10	-276.27	-281.15	-1050.53	40°07'00.023"N	104°43'27.452"W	0.23	
6615.00	0.810	241.370	6480.09	-276.87	-281.75	-1051.44	40°07'00.017"N	104°43'27.464"W	0.22	
6700.00	0.880	235.090	6565.08	-277.52	-282.41	-1052.50	40°07'00.011"N	104°43'27.477"W	0.14	
6786.00	0.990	246.080	6651.07	-278.20	-283.09	-1053.73	40°07'00.004"N	104°43'27.493"W	0.24	
6871.00	1.190	246.170	6736.06	-278.84	-283.74	-1055.20	40°07'00.000"N	104°43'27.512"W	0.24	
6956.00	1.300	238.980	6821.04	-279.69	-284.60	-1056.84	40°06'59.989"N	104°43'27.533"W	0.22	
7041.00	3.950	330.580	6905.96	-277.62	-282.54	-1059.10	40°07'00.010"N	104°43'27.562"W	4.93	
7084.00	8.730	344.860	6948.69	-273.17	-278.10	-1060.68	40°07'00.054"N	104°43'27.583"W	11.62	
7126.00	13.460	346.650	6989.89	-265.33	-270.26	-1062.65	40°07'00.131"N	104°43'27.608"W	11.29	
7169.00	19.390	349.720	7031.12	-253.41	-258.36	-1065.08	40°07'00.249"N	104°43'27.639"W	13.93	
7211.00	23.980	355.480	7070.14	-238.03	-242.98	-1067.00	40°07'00.401"N	104°43'27.664"W	12.03	
7254.00	30.490	359.490	7108.36	-218.38	-223.34	-1067.78	40°07'00.595"N	104°43'27.674"W	15.72	
7296.00	33.620	359.410	7143.95	-196.09	-201.05	-1068.00	40°07'00.815"N	104°43'27.677"W	7.45	
7339.00	38.380	359.580	7178.73	-170.83	-175.79	-1068.22	40°07'01.065"N	104°43'27.680"W	11.07	
7381.00	41.260	1.690	7210.98	-143.94	-148.90	-1067.90	40°07'01.330"N	104°43'27.676"W	7.57	



Actual Wellpath Report

WISHBONE 27C-24HZ AWP

Page 4 of 7



REFERENCE WELLPATH IDENTIFICATION

Operator	KERR-MCGEE OIL & GAS ONSHORE LP	Slot	SLOT#06 WISHBONE 27C-24HZ (320'FSL & 1311'FEL, SEC.24)
Area	COLORADO	Well	WISHBONE 27C-24HZ
Field	WELD COUNTY (KERR MCGEE)	Wellbore	WISHBONE 27C-24HZ AWP
Facility	SEC.24-T2N-R66W		

WELLPATH DATA (154 stations) † = interpolated/extrapolated station

MD [ft]	Inclination [°]	Azimuth [°]	TVD [ft]	Vert Sect [ft]	North [ft]	East [ft]	Latitude	Longitude	DLS [°/100ft]	Comments
7421.00	41.190	0.670	7241.07	-117.59	-122.54	-1067.36	40°07'01.591"N	104°43'27.669"W	1.69	
7466.00	44.680	1.500	7274.01	-86.95	-91.90	-1066.77	40°07'01.894"N	104°43'27.661"W	7.86	
7509.00	47.150	1.520	7303.92	-56.08	-61.03	-1065.96	40°07'02.199"N	104°43'27.651"W	5.74	
7552.00	51.140	1.380	7332.05	-23.58	-28.52	-1065.14	40°07'02.520"N	104°43'27.640"W	9.28	
7595.00	58.220	1.910	7356.89	11.47	6.53	-1064.12	40°07'02.866"N	104°43'27.627"W	16.50	
7637.00	64.630	2.050	7376.97	48.30	43.37	-1062.85	40°07'03.230"N	104°43'27.611"W	15.26	
7680.00	66.980	1.870	7394.59	87.49	82.57	-1061.51	40°07'03.618"N	104°43'27.593"W	5.48	
7722.00	70.040	1.470	7409.98	126.55	121.62	-1060.37	40°07'04.004"N	104°43'27.579"W	7.34	
7765.00	70.810	1.160	7424.38	167.05	162.13	-1059.44	40°07'04.404"N	104°43'27.567"W	1.92	
7807.00	73.670	359.790	7437.19	207.03	202.12	-1059.11	40°07'04.799"N	104°43'27.563"W	7.48	
7850.00	77.170	358.900	7448.02	248.64	243.73	-1059.59	40°07'05.210"N	104°43'27.569"W	8.38	
7892.00	81.260	358.850	7455.87	289.89	284.97	-1060.40	40°07'05.618"N	104°43'27.579"W	9.74	
7917.00	83.970	358.510	7459.09	314.67	309.75	-1060.97	40°07'05.863"N	104°43'27.587"W	10.92	
7965.00†	87.161	358.383	7462.80	362.51	357.58	-1062.27	40°07'06.335"N	104°43'27.603"W	6.65	7" CASING POINT
7985.00	88.490	358.330	7463.56	382.49	377.56	-1062.84	40°07'06.533"N	104°43'27.611"W	6.65	
8070.00	91.140	358.540	7463.83	467.46	462.52	-1065.17	40°07'07.372"N	104°43'27.641"W	3.13	
8156.00	91.750	359.710	7461.66	553.43	548.48	-1066.48	40°07'08.222"N	104°43'27.658"W	1.53	
8240.00	91.260	0.780	7459.46	637.39	632.45	-1066.12	40°07'09.052"N	104°43'27.653"W	1.40	
8326.00	90.400	1.780	7458.21	723.35	718.42	-1064.20	40°07'09.901"N	104°43'27.628"W	1.53	
8411.00	88.610	0.540	7458.95	808.32	803.39	-1062.48	40°07'10.741"N	104°43'27.606"W	2.56	
8496.00	88.890	0.840	7460.80	893.28	888.37	-1061.45	40°07'11.581"N	104°43'27.593"W	0.48	
8581.00	89.500	1.430	7461.99	978.25	973.34	-1059.77	40°07'12.420"N	104°43'27.572"W	1.00	
8666.00	89.040	1.900	7463.08	1063.19	1058.30	-1057.30	40°07'13.260"N	104°43'27.540"W	0.77	
8751.00	88.520	1.270	7464.89	1148.13	1143.24	-1054.95	40°07'14.099"N	104°43'27.510"W	0.96	
8836.00	88.180	359.840	7467.33	1233.08	1228.20	-1054.13	40°07'14.939"N	104°43'27.499"W	1.73	
8921.00	89.410	358.820	7469.12	1318.06	1313.17	-1055.12	40°07'15.779"N	104°43'27.512"W	1.88	
9006.00	89.480	358.260	7469.95	1403.04	1398.14	-1057.29	40°07'16.618"N	104°43'27.540"W	0.66	
9091.00	90.060	358.160	7470.29	1488.01	1483.10	-1059.94	40°07'17.458"N	104°43'27.574"W	0.69	
9176.00	90.120	357.100	7470.15	1572.95	1568.03	-1063.46	40°07'18.297"N	104°43'27.619"W	1.25	
9261.00	92.330	359.600	7468.34	1657.89	1652.96	-1065.90	40°07'19.137"N	104°43'27.651"W	3.92	
9347.00	92.890	359.210	7464.42	1743.80	1738.87	-1066.80	40°07'19.985"N	104°43'27.662"W	0.79	
9432.00	92.460	0.090	7460.45	1828.71	1823.77	-1067.32	40°07'20.824"N	104°43'27.669"W	1.15	
9517.00	91.040	0.790	7457.86	1913.66	1908.73	-1066.66	40°07'21.664"N	104°43'27.661"W	1.86	
9602.00	90.210	2.090	7456.93	1998.61	1993.69	-1064.53	40°07'22.504"N	104°43'27.633"W	1.81	
9687.00	89.410	3.440	7457.21	2083.49	2078.59	-1060.43	40°07'23.343"N	104°43'27.581"W	1.85	
9772.00	87.600	2.370	7459.43	2168.33	2163.45	-1056.12	40°07'24.181"N	104°43'27.525"W	2.47	
9857.00	86.640	1.070	7463.70	2253.16	2248.30	-1053.57	40°07'25.020"N	104°43'27.493"W	1.90	
9942.00	86.770	359.550	7468.59	2338.02	2333.15	-1053.11	40°07'25.858"N	104°43'27.487"W	1.79	
10027.00	87.560	358.890	7472.79	2422.91	2418.04	-1054.27	40°07'26.697"N	104°43'27.502"W	1.21	
10112.00	89.040	357.900	7475.31	2507.84	2502.97	-1056.65	40°07'27.536"N	104°43'27.532"W	2.09	
10197.00	90.090	357.210	7475.96	2592.78	2587.88	-1060.27	40°07'28.376"N	104°43'27.579"W	1.48	
10282.00	90.150	357.560	7475.78	2677.71	2672.80	-1064.15	40°07'29.215"N	104°43'27.629"W	0.42	
10368.00	90.240	357.940	7475.49	2763.65	2758.73	-1067.53	40°07'30.064"N	104°43'27.672"W	0.45	
10453.00	90.400	357.870	7475.01	2848.61	2843.67	-1070.64	40°07'30.903"N	104°43'27.713"W	0.21	
10538.00	90.960	359.610	7474.00	2933.59	2928.64	-1072.50	40°07'31.743"N	104°43'27.737"W	2.15	



Actual Wellpath Report

WISHBONE 27C-24HZ AWP

Page 5 of 7



REFERENCE WELLPATH IDENTIFICATION

Operator	KERR-MCGEE OIL & GAS ONSHORE LP	Slot	SLOT#06 WISHBONE 27C-24HZ (320'FSL & 1311'FEL, SEC.24)
Area	COLORADO	Well	WISHBONE 27C-24HZ
Field	WELD COUNTY (KERR MCGEE)	Wellbore	WISHBONE 27C-24HZ AWB
Facility	SEC.24-T2N-R66W		

WELLPATH DATA (154 stations)

MD [ft]	Inclination [°]	Azimuth [°]	TVD [ft]	Vert Sect [ft]	North [ft]	East [ft]	Latitude	Longitude	DLS [°/100ft]	Comments
10623.00	89.540	359.710	7473.63	3018.58	3013.64	-1073.01	40°07'32.583"N	104°43'27.743"W	1.67	
10708.00	89.380	359.100	7474.43	3103.58	3098.63	-1073.89	40°07'33.423"N	104°43'27.755"W	0.74	
10793.00	89.750	359.560	7475.08	3188.57	3183.62	-1074.89	40°07'34.263"N	104°43'27.767"W	0.69	
10878.00	90.060	359.220	7475.22	3273.57	3268.61	-1075.79	40°07'35.103"N	104°43'27.779"W	0.54	
10963.00	90.060	358.190	7475.13	3358.56	3353.59	-1077.71	40°07'35.942"N	104°43'27.804"W	1.21	
11048.00	90.120	359.410	7475.00	3443.54	3438.57	-1079.49	40°07'36.782"N	104°43'27.827"W	1.44	
11134.00	90.090	358.790	7474.84	3529.54	3524.56	-1080.84	40°07'37.632"N	104°43'27.844"W	0.72	
11219.00	90.460	359.500	7474.43	3614.53	3609.55	-1082.11	40°07'38.472"N	104°43'27.861"W	0.94	
11304.00	89.290	358.770	7474.62	3699.53	3694.54	-1083.39	40°07'39.312"N	104°43'27.877"W	1.62	
11389.00	89.260	358.870	7475.69	3784.51	3779.51	-1085.14	40°07'40.151"N	104°43'27.900"W	0.12	
11474.00	89.600	359.910	7476.54	3869.50	3864.50	-1086.05	40°07'40.991"N	104°43'27.911"W	1.29	
11560.00	89.630	359.910	7477.12	3955.50	3950.50	-1086.18	40°07'41.841"N	104°43'27.913"W	0.03	
11645.00	89.810	0.110	7477.53	4040.50	4035.50	-1086.17	40°07'42.681"N	104°43'27.913"W	0.32	
11730.00	90.360	0.980	7477.40	4125.49	4120.49	-1085.36	40°07'43.521"N	104°43'27.903"W	1.21	
11815.00	89.930	2.280	7477.19	4210.44	4205.46	-1082.94	40°07'44.361"N	104°43'27.872"W	1.61	
11901.00	90.180	2.410	7477.11	4296.35	4291.38	-1079.42	40°07'45.210"N	104°43'27.826"W	0.33	
11986.00	90.800	3.190	7476.38	4381.22	4376.28	-1075.27	40°07'46.049"N	104°43'27.773"W	1.17	
12040.00	90.990	3.980	7475.54	4435.09	4430.16	-1071.90	40°07'46.581"N	104°43'27.730"W	1.50	LAST BHI MWD SURVEY
12098.00	90.990	3.980	7474.53	4492.93	4488.02	-1067.87	40°07'47.153"N	104°43'27.678"W	0.00	PROJECTION TO BIT

HOLE & CASING SECTIONS - Ref Wellbore: WISHBONE 27C-24HZ AWB Ref Wellpath: WISHBONE 27C-24HZ AWP

String/Diameter	Start MD [ft]	End MD [ft]	Interval [ft]	Start TVD [ft]	End TVD [ft]	Start N/S [ft]	Start E/W [ft]	End N/S [ft]	End E/W [ft]
13.5in Open Hole	16.00	1032.00	1016.00	16.00	1031.84	0.00	0.00	6.23	-13.67
9.625in Casing Surface	16.00	1032.00	1016.00	16.00	1031.84	0.00	0.00	6.23	-13.67
8.75in Open Hole	1032.00	7975.00	6943.00	1031.84	7463.24	6.23	-13.67	367.57	-1062.56
7in Casing Intermediate	16.00	7965.00	7949.00	16.00	7462.80	0.00	0.00	357.58	-1062.27
6.125in Open Hole	7975.00	12098.00	4123.00	7463.24	7474.53	367.57	-1062.56	4488.02	-1067.87



Actual Wellpath Report

WISHBONE 27C-24HZ AWP

Page 6 of 7



REFERENCE WELLPATH IDENTIFICATION

Operator	KERR-MCGEE OIL & GAS ONSHORE LP	Slot	SLOT#06 WISHBONE 27C-24HZ (320'FSL & 1311'FEL, SEC.24)
Area	COLORADO	Well	WISHBONE 27C-24HZ
Field	WELD COUNTY (KERR MCGEE)	Wellbore	WISHBONE 27C-24HZ AWB
Facility	SEC.24-T2N-R66W		

TARGETS

Name	MD [ft]	TVD [ft]	North [ft]	East [ft]	Grid East [US ft]	Grid North [US ft]	Latitude	Longitude	Shape
SEC.24 SECTION LINES		-9.00	-21.19	-3620.50	3214370.72	1286534.33	40°07'02.590"N	104°44'00.532"W	polygon
WISHBONE 27C-24HZ LAND BOX		5068.00	0.00	0.00	3217990.74	1286587.34	40°07'02.802"N	104°43'13.930"W	polygon
WISHBONE 27C-24HZ BHL ON PLAT (460'FNL & 2365'FEL, SEC.24)		7473.00	4513.27	-1074.04	3216877.12	1291090.80	40°07'47.402"N	104°43'27.757"W	point
SEC. 24 HARDLINES (460' SETBACKS)		7591.00	-21.19	-3620.50	3214370.72	1286534.33	40°07'02.590"N	104°44'00.532"W	polygon

WELLPATH COMPOSITION - Ref Wellbore: WISHBONE 27C-24HZ AWB Ref Wellpath: WISHBONE 27C-24HZ AWP

Start MD [ft]	End MD [ft]	Positional Uncertainty Model	Log Name/Comment	Wellbore
16.00	916.00	Generic gyro - continuous (Standard)	MS ENERGY SERVICES GYRO SURVEYS <116-916>	WISHBONE 27C-24HZ AWB
916.00	7917.00	NaviTrak (MagCorr)	BHI MWD SURVEYS 8 3/4" HOLE <1090-7917>	WISHBONE 27C-24HZ AWB
7917.00	12040.00	OnTrak (MagCorr)	BHI MWD SURVEYS 6 1/8" HOLE <7985-12040>	WISHBONE 27C-24HZ AWB
12040.00	12098.00	Blind Drilling (std)	Projection to bit	WISHBONE 27C-24HZ AWB



Actual Wellpath Report

WISHBONE 27C-24HZ AWP

Page 7 of 7



REFERENCE WELLPATH IDENTIFICATION

Operator	KERR-MCGEE OIL & GAS ONSHORE LP	Slot	SLOT#06 WISHBONE 27C-24HZ (320'FSL & 1311'FEL, SEC.24)
Area	COLORADO	Well	WISHBONE 27C-24HZ
Field	WELD COUNTY (KERR MCGEE)	Wellbore	WISHBONE 27C-24HZ AWB
Facility	SEC.24-T2N-R66W		

WELLPATH COMMENTS

MD [ft]	Inclination [°]	Azimuth [°]	TVD [ft]	Comment
16.00	0.000	175.220	16.00	TIE ON
116.00	0.120	175.220	116.00	BEGIN GYRO SURVEYS
916.00	0.810	311.720	915.86	TIE ONTO GYRO SURVEYS
1090.00	1.250	306.240	1089.83	BEGIN BHI MWD SURVEYS
7965.00	87.161	358.383	7462.80	7" CASING POINT
12040.00	90.990	3.980	7475.54	LAST BHI MWD SURVEY
12098.00	90.990	3.980	7474.53	PROJECTION TO BIT