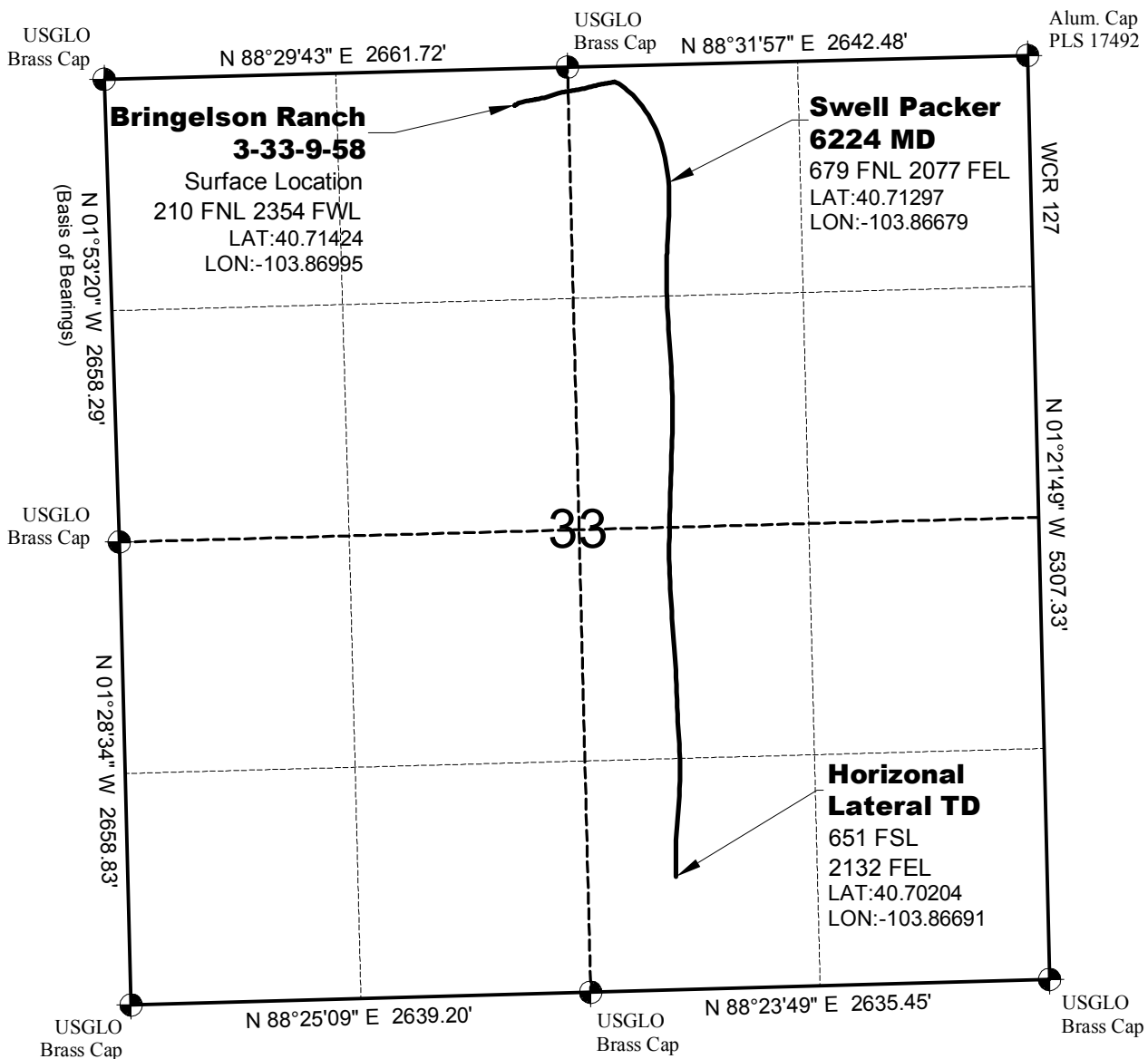


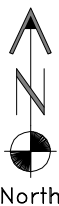
AS-DRILLED MAP

**BRINGELSON RANCH
2-33-9-58 PAD**

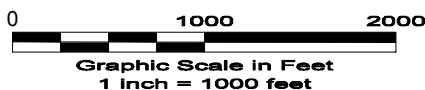


SURVEYOR'S STATEMENT

The undersigned hereby states that the as-drilled lateral as shown hereon was plotted from the directional survey report prepared by Precision Directional Services (See Note 2).



North



NOTES

- 1.) Refer to well location map on record at COGCC.
- 2.) Directional data provided by Precision Directional Services.
Report Date: 4/2/13 Created by: Shane Nelson
- 3.) Distances to nearest section lines are measured perpendicularly.
- 4.) Date of Conductor As-built 1/15/13; Date of Drawing 7/22/13. REV 0
PDOP Reading: 1.7 Instrument Operator: Marc Woodard



**CARRIZO OIL & GAS, INC
BRINGELSON RANCH 3-33-9-58**

**SL NE1/4 NW1/4 SEC.33 T9N R58W
HL TD SW1/4 SE1/4 SEC.33 T9N R58W
6th PM WELD COUNTY COLORADO**