

KERR-MCGEE OIL & GAS ONSHORE LP

Location: COLORADO Slot: SLOT#01 BADDING 37N-35HZ (350'FSL & 704'FEL, SEC.26)
 Field: WELD COUNTY (KERR MCGEE) Well: BADDING 37N-35HZ
 Facility: SEC.26-T2N-R66W Wellbore: BADDING 37N-35HZ PWB

Plot reference wellpath is BADDING 37N-35HZ (PERMIT REV-2) PWP

True vertical depths are referenced to Rig on SLOT#01 BADDING 37N-35HZ (350'FSL & 704'FEL, SEC.26) (RKB)	Grid System: NAD83 / Lambert Colorado SP, Northern Zone (501), US feet
Measured depths are referenced to Rig on SLOT#01 BADDING 37N-35HZ (350'FSL & 704'FEL, SEC.26) (RKB)	North Reference: True north
Rig on SLOT#01 BADDING 37N-35HZ (350'FSL & 704'FEL, SEC.26) (RKB) to Mean Sea Level: 5132 feet	Scale: True distance
Mean Sea Level to Mud line (At Slot: SLOT#01 BADDING 37N-35HZ (350'FSL & 704'FEL, SEC.26)): 0 feet	Depths are in feet
Coordinates are in feet referenced to Slot	Created by: wjlsj02 on 8/22/2013

Location Information

Facility Name	Grid East (US ft)	Grid North (US ft)	Latitude	Longitude		
SEC.26-T2N-R66W	3213324.01	1281285.67	40°06'10.811"N	104°44'14.586"W		
Slot	Local N (ft)	Local E (ft)	Grid East (US ft)	Grid North (US ft)	Latitude	Longitude
SLOT#01 BADDING 37N-35HZ (350'FSL & 704'FEL, SEC.26)	0.00	0.08	3213324.011	1281285.672	40°06'10.811"N	104°44'14.586"W
Rig on SLOT#01 BADDING 37N-35HZ (350'FSL & 704'FEL, SEC.26) (RKB) to Mud line (At Slot: SLOT#01 BADDING 37N-35HZ (350'FSL & 704'FEL, SEC.26))	5132ft					
Mean Sea Level to Mud line (At Slot: SLOT#01 BADDING 37N-35HZ (350'FSL & 704'FEL, SEC.26))	0ft					
Rig on SLOT#01 BADDING 37N-35HZ (350'FSL & 704'FEL, SEC.26) (RKB) to Mean Sea Level	5132ft					

Survey Program

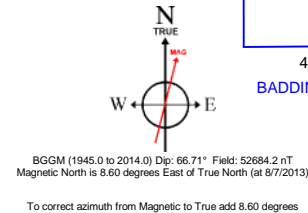
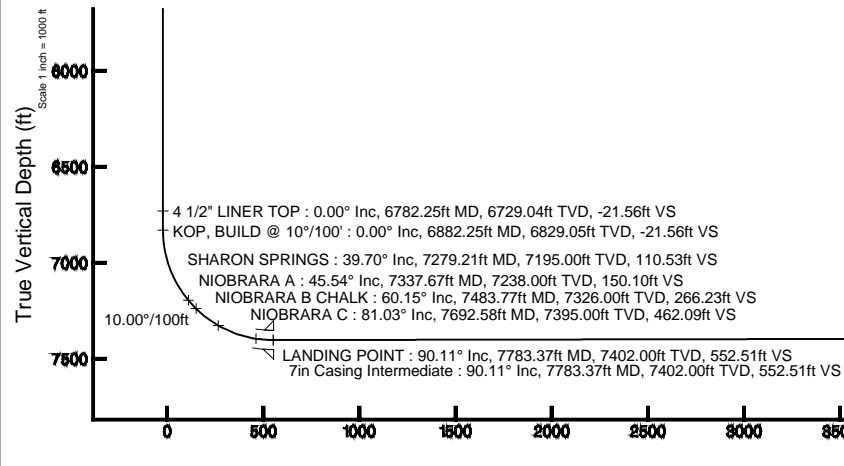
Start MD (ft)	End MD (ft)	Tool	Model	Log Name/Comment	Wellbore
17.00	7783.37	NaviTrak	NaviTrak (Standard)		BADDING 37N-35HZ PWB
7783.37	12925.71	OnTrak	OnTrak (Standard)		BADDING 37N-35HZ PWB

Well Profile Data

Design Comment	MD (ft)	Inc (°)	Az (°)	TVD (ft)	Local N (ft)	Local E (ft)	DLS (°/100ft)	VS (ft)
TIE-ON	17.00	0.000	271.860	17.00	0.00	0.00	0.00	0.00
BEGIN NUDGE	1450.00	0.000	271.860	1450.00	0.00	0.00	0.00	0.00
END NUDGE	1950.00	10.000	271.860	1947.47	1.41	-43.50	2.00	-1.47
BEGIN DROP	5118.67	10.000	271.860	5068.00	19.27	-593.44	0.00	-20.09
END DROP	5618.67	0.000	179.921	5565.47	20.68	-636.94	2.00	-21.56
KOP, BUILD @ 10°/100'	6882.25	0.000	179.921	6829.05	20.68	-636.94	0.00	-21.56
LANDING POINT	7783.37	90.111	179.921	7402.00	-553.39	-636.15	10.00	552.51
TOTAL DEPTH	12925.71	90.111	179.921	7392.00	-5695.71	-629.02	0.00	5694.84

Targets

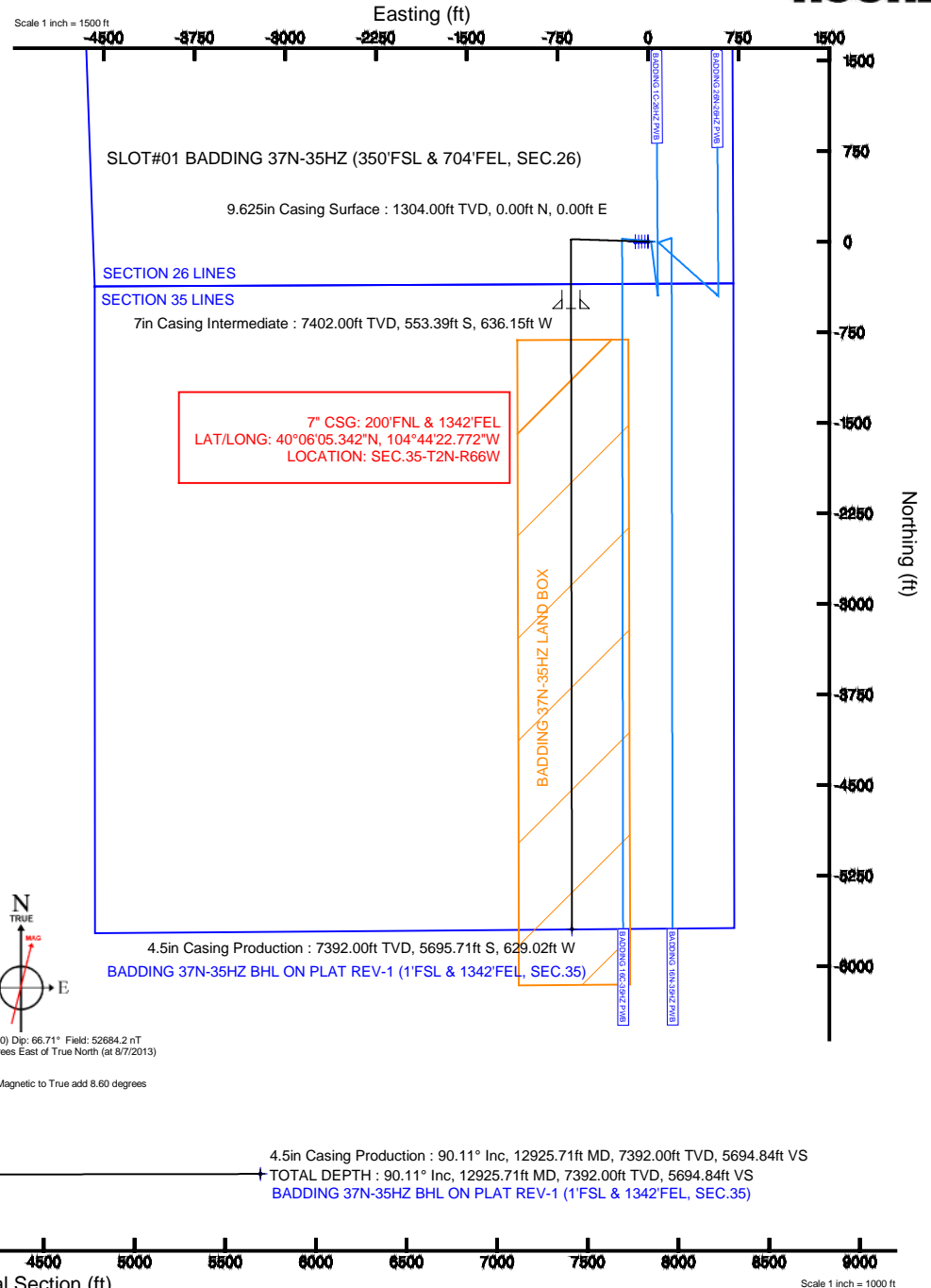
Name	MD (ft)	TVD (ft)	Local N (ft)	Local E (ft)	Grid East (US ft)	Grid North (US ft)	Latitude	Longitude
BADDING SECTION 26 LINES		0.00	0.00	0.00	3213324.01	1281285.67	40°06'10.811"N	104°44'14.586"W
BADDING SECTION 35 LINES		0.00	0.00	0.00	3213324.01	1281285.67	40°06'10.811"N	104°44'14.586"W
BADDING 37N-35HZ BHL ON PLAT REV-1 (1'FSL & 1342'FEL, SEC.35)	12925.71	7392.00	-5695.71	-629.02	3212744.02	1270585.00	40°05'14.525"N	104°44'22.679"W
BADDING 37N-35HZ LAND BOX		7400.00	0.00	0.00	3213324.01	1281285.67	40°06'10.811"N	104°44'14.586"W



4.5in Casing Production : 7392.00ft TVD, 5695.71ft S, 629.02ft W
 BADDING 37N-35HZ BHL ON PLAT REV-1 (1'FSL & 1342'FEL, SEC.35)

4.5in Casing Production : 90.11° Inc, 12925.71ft MD, 7392.00ft TVD, 5694.84ft VS
 TOTAL DEPTH : 90.11° Inc, 12925.71ft MD, 7392.00ft TVD, 5694.84ft VS
 BADDING 37N-35HZ BHL ON PLAT REV-1 (1'FSL & 1342'FEL, SEC.35)

422 Azimuth 179.92° with reference 0.00 N, 0.00 E



Scale 1 inch = 1000 ft



Planned Wellpath Report

BADDING 37N-35HZ (PERMIT REV-2) PWP
Page 1 of 7



REFERENCE WELLPATH IDENTIFICATION

Operator	KERR-MCGEE OIL & GAS ONSHORE LP	Slot	SLOT#01 BADDING 37N-35HZ (350'FSL & 704'FEL, SEC.26)
Area	COLORADO	Well	BADDING 37N-35HZ
Field	WELD COUNTY (KERR MCGEE)	Wellbore	BADDING 37N-35HZ PWB
Facility	SEC.26-T2N-R66W		

REPORT SETUP INFORMATION

Projection System	NAD83 / Lambert Colorado SP, Northern Zone (501), US feet	Software System	WellArchitect® 4.0.0
North Reference	True	User	Wilsjef02
Scale	0.99996	Report Generated	8/22/2013 at 13:12:26
Convergence at slot	n/a	Database/Source file	WellArchitectDB/BADDING_37N-35HZ_PWB.xml

WELLPATH LOCATION

	Local coordinates		Grid coordinates		Geographic coordinates	
	North[ft]	East[ft]	Easting[US ft]	Northing[US ft]	Latitude	Longitude
Slot Location	0.00	0.08	3213324.01	1281285.67	40°06'10.811"N	104°44'14.586"W
Facility Reference Pt			3213323.93	1281285.67	40°06'10.811"N	104°44'14.587"W
Field Reference Pt			3197771.84	1268891.29	40°04'09.600"N	104°47'36.000"W

WELLPATH DATUM

Calculation method	Minimum curvature	Rig on SLOT#01 BADDING 37N-35HZ (350'FSL & 704'FEL, SEC.26) (RKB) to Facility Vertical Datum	5132.00ft
Horizontal Reference Pt	Slot	Rig on SLOT#01 BADDING 37N-35HZ (350'FSL & 704'FEL, SEC.26) (RKB) to Mean Sea Level	5132.00ft
Vertical Reference Pt	Rig on SLOT#01 BADDING 37N-35HZ (350'FSL & 704'FEL, SEC.26) (RKB)	Rig on SLOT#01 BADDING 37N-35HZ (350'FSL & 704'FEL, SEC.26) (RKB) to Mud Line at Slot (SLOT#01 BADDING 37N-35HZ (350'FSL & 704'FEL, SEC.26))	5132.00ft
MD Reference Pt	Rig on SLOT#01 BADDING 37N-35HZ (350'FSL & 704'FEL, SEC.26) (RKB)	Section Origin	N 0.00, E 0.00 ft
Field Vertical Reference	Mean Sea Level	Section Azimuth	179.92°



Planned Wellpath Report

BADDING 37N-35HZ (PERMIT REV-2) PWP

Page 2 of 7



REFERENCE WELLPATH IDENTIFICATION			
Operator	KERR-MCGEE OIL & GAS ONSHORE LP	Slot	SLOT#01 BADDING 37N-35HZ (350'FSL & 704'FEL, SEC.26)
Area	COLORADO	Well	BADDING 37N-35HZ
Field	WELD COUNTY (KERR MCGEE)	Wellbore	BADDING 37N-35HZ PWB
Facility	SEC.26-T2N-R66W		

WELLPATH DATA (146 stations) † = interpolated/extrapolated station										
MD [ft]	Inclination [°]	Azimuth [°]	TVD [ft]	Vert Sect [ft]	North [ft]	East [ft]	Latitude	Longitude	DLS [°/100ft]	Comments
0.00†	0.000	271.860	0.00	0.00	0.00	0.00	40°06'10.811"N	104°44'14.586"W	0.00	
17.00	0.000	271.860	17.00	0.00	0.00	0.00	40°06'10.811"N	104°44'14.586"W	0.00	TIE-ON
117.00†	0.000	271.860	117.00	0.00	0.00	0.00	40°06'10.811"N	104°44'14.586"W	0.00	
217.00†	0.000	271.860	217.00	0.00	0.00	0.00	40°06'10.811"N	104°44'14.586"W	0.00	
317.00†	0.000	271.860	317.00	0.00	0.00	0.00	40°06'10.811"N	104°44'14.586"W	0.00	
417.00†	0.000	271.860	417.00	0.00	0.00	0.00	40°06'10.811"N	104°44'14.586"W	0.00	
517.00†	0.000	271.860	517.00	0.00	0.00	0.00	40°06'10.811"N	104°44'14.586"W	0.00	
617.00†	0.000	271.860	617.00	0.00	0.00	0.00	40°06'10.811"N	104°44'14.586"W	0.00	
717.00†	0.000	271.860	717.00	0.00	0.00	0.00	40°06'10.811"N	104°44'14.586"W	0.00	
817.00†	0.000	271.860	817.00	0.00	0.00	0.00	40°06'10.811"N	104°44'14.586"W	0.00	
917.00†	0.000	271.860	917.00	0.00	0.00	0.00	40°06'10.811"N	104°44'14.586"W	0.00	
1017.00†	0.000	271.860	1017.00	0.00	0.00	0.00	40°06'10.811"N	104°44'14.586"W	0.00	
1117.00†	0.000	271.860	1117.00	0.00	0.00	0.00	40°06'10.811"N	104°44'14.586"W	0.00	
1217.00†	0.000	271.860	1217.00	0.00	0.00	0.00	40°06'10.811"N	104°44'14.586"W	0.00	
1254.00†	0.000	271.860	1254.00	0.00	0.00	0.00	40°06'10.811"N	104°44'14.586"W	0.00	FOX HILLS BASE
1317.00†	0.000	271.860	1317.00	0.00	0.00	0.00	40°06'10.811"N	104°44'14.586"W	0.00	
1417.00†	0.000	271.860	1417.00	0.00	0.00	0.00	40°06'10.811"N	104°44'14.586"W	0.00	
1450.00	0.000	271.860	1450.00	0.00	0.00	0.00	40°06'10.811"N	104°44'14.586"W	0.00	BEGIN NUDGE
1517.00†	1.340	271.860	1516.99	-0.03	0.03	-0.78	40°06'10.811"N	104°44'14.596"W	2.00	
1617.00†	3.340	271.860	1616.91	-0.16	0.16	-4.86	40°06'10.813"N	104°44'14.649"W	2.00	
1717.00†	5.340	271.860	1716.61	-0.42	0.40	-12.43	40°06'10.815"N	104°44'14.746"W	2.00	
1817.00†	7.340	271.860	1816.00	-0.79	0.76	-23.46	40°06'10.819"N	104°44'14.888"W	2.00	
1917.00†	9.340	271.860	1914.93	-1.29	1.23	-37.96	40°06'10.823"N	104°44'15.075"W	2.00	
1950.00	10.000	271.860	1947.47	-1.47	1.41	-43.50	40°06'10.825"N	104°44'15.146"W	2.00	END NUDGE
2017.00†	10.000	271.860	2013.45	-1.87	1.79	-55.13	40°06'10.829"N	104°44'15.295"W	0.00	
2117.00†	10.000	271.860	2111.93	-2.45	2.35	-72.48	40°06'10.834"N	104°44'15.519"W	0.00	
2217.00†	10.000	271.860	2210.41	-3.04	2.92	-89.84	40°06'10.840"N	104°44'15.742"W	0.00	
2317.00†	10.000	271.860	2308.89	-3.63	3.48	-107.19	40°06'10.845"N	104°44'15.965"W	0.00	
2417.00†	10.000	271.860	2407.37	-4.22	4.04	-124.55	40°06'10.851"N	104°44'16.189"W	0.00	
2517.00†	10.000	271.860	2505.85	-4.80	4.61	-141.91	40°06'10.857"N	104°44'16.412"W	0.00	
2617.00†	10.000	271.860	2604.33	-5.39	5.17	-159.26	40°06'10.862"N	104°44'16.636"W	0.00	
2717.00†	10.000	271.860	2702.81	-5.98	5.74	-176.62	40°06'10.868"N	104°44'16.859"W	0.00	
2817.00†	10.000	271.860	2801.29	-6.57	6.30	-193.97	40°06'10.873"N	104°44'17.082"W	0.00	
2917.00†	10.000	271.860	2899.77	-7.15	6.86	-211.33	40°06'10.879"N	104°44'17.306"W	0.00	
3017.00†	10.000	271.860	2998.26	-7.74	7.43	-228.68	40°06'10.884"N	104°44'17.529"W	0.00	
3117.00†	10.000	271.860	3096.74	-8.33	7.99	-246.04	40°06'10.890"N	104°44'17.752"W	0.00	
3217.00†	10.000	271.860	3195.22	-8.92	8.55	-263.40	40°06'10.896"N	104°44'17.976"W	0.00	
3317.00†	10.000	271.860	3293.70	-9.50	9.12	-280.75	40°06'10.901"N	104°44'18.199"W	0.00	
3417.00†	10.000	271.860	3392.18	-10.09	9.68	-298.11	40°06'10.907"N	104°44'18.422"W	0.00	
3517.00†	10.000	271.860	3490.66	-10.68	10.24	-315.46	40°06'10.912"N	104°44'18.646"W	0.00	
3617.00†	10.000	271.860	3589.14	-11.27	10.81	-332.82	40°06'10.918"N	104°44'18.869"W	0.00	
3717.00†	10.000	271.860	3687.62	-11.85	11.37	-350.17	40°06'10.923"N	104°44'19.092"W	0.00	
3817.00†	10.000	271.860	3786.10	-12.44	11.94	-367.53	40°06'10.929"N	104°44'19.316"W	0.00	
3917.00†	10.000	271.860	3884.58	-13.03	12.50	-384.89	40°06'10.934"N	104°44'19.539"W	0.00	
4017.00†	10.000	271.860	3983.06	-13.62	13.06	-402.24	40°06'10.940"N	104°44'19.762"W	0.00	



Planned Wellpath Report

BADDING 37N-35HZ (PERMIT REV-2) PWP

Page 3 of 7



REFERENCE WELLPATH IDENTIFICATION			
Operator	KERR-MCGEE OIL & GAS ONSHORE LP	Slot	SLOT#01 BADDING 37N-35HZ (350'FSL & 704'FEL, SEC.26)
Area	COLORADO	Well	BADDING 37N-35HZ
Field	WELD COUNTY (KERR MCGEE)	Wellbore	BADDING 37N-35HZ PWB
Facility	SEC.26-T2N-R66W		

WELLPATH DATA (146 stations) † = interpolated/extrapolated station										
MD [ft]	Inclination [°]	Azimuth [°]	TVD [ft]	Vert Sect [ft]	North [ft]	East [ft]	Latitude	Longitude	DLS [°/100ft]	Comments
4117.00†	10.000	271.860	4081.54	-14.20	13.63	-419.60	40°06'10.946"N	104°44'19.986"W	0.00	
4217.00†	10.000	271.860	4180.02	-14.79	14.19	-436.95	40°06'10.951"N	104°44'20.209"W	0.00	
4317.00†	10.000	271.860	4278.51	-15.38	14.75	-454.31	40°06'10.957"N	104°44'20.432"W	0.00	
4323.59†	10.000	271.860	4285.00	-15.42	14.79	-455.45	40°06'10.957"N	104°44'20.447"W	0.00	PARKMAN
4417.00†	10.000	271.860	4376.99	-15.97	15.32	-471.66	40°06'10.962"N	104°44'20.656"W	0.00	
4517.00†	10.000	271.860	4475.47	-16.55	15.88	-489.02	40°06'10.968"N	104°44'20.879"W	0.00	
4617.00†	10.000	271.860	4573.95	-17.14	16.44	-506.38	40°06'10.973"N	104°44'21.103"W	0.00	
4706.41†	10.000	271.860	4662.00	-17.67	16.95	-521.89	40°06'10.978"N	104°44'21.302"W	0.00	SUSSEX
4717.00†	10.000	271.860	4672.43	-17.73	17.01	-523.73	40°06'10.979"N	104°44'21.326"W	0.00	
4817.00†	10.000	271.860	4770.91	-18.32	17.57	-541.09	40°06'10.985"N	104°44'21.549"W	0.00	
4917.00†	10.000	271.860	4869.39	-18.91	18.14	-558.44	40°06'10.990"N	104°44'21.773"W	0.00	
5017.00†	10.000	271.860	4967.87	-19.49	18.70	-575.80	40°06'10.996"N	104°44'21.996"W	0.00	
5117.00†	10.000	271.860	5066.35	-20.08	19.26	-593.15	40°06'11.001"N	104°44'22.219"W	0.00	
5118.67	10.000	271.860	5068.00	-20.09	19.27	-593.44	40°06'11.001"N	104°44'22.223"W	0.00	BEGIN DROP
5217.00†	8.033	271.860	5165.11	-20.61	19.77	-608.85	40°06'11.006"N	104°44'22.421"W	2.00	
5317.00†	6.033	271.860	5264.35	-21.03	20.17	-621.08	40°06'11.010"N	104°44'22.579"W	2.00	
5417.00†	4.033	271.860	5363.96	-21.32	20.45	-629.85	40°06'11.013"N	104°44'22.692"W	2.00	
5517.00†	2.033	271.860	5463.81	-21.50	20.63	-635.14	40°06'11.015"N	104°44'22.760"W	2.00	
5617.00†	0.033	271.860	5563.79	-21.56	20.68	-636.94	40°06'11.015"N	104°44'22.783"W	2.00	
5618.67	0.000	179.921	5565.47	-21.56	20.68	-636.94	40°06'11.015"N	104°44'22.783"W	2.00	END DROP
5717.00†	0.000	179.921	5663.79	-21.56	20.68	-636.94	40°06'11.015"N	104°44'22.783"W	0.00	
5817.00†	0.000	179.921	5763.79	-21.56	20.68	-636.94	40°06'11.015"N	104°44'22.783"W	0.00	
5917.00†	0.000	179.921	5863.79	-21.56	20.68	-636.94	40°06'11.015"N	104°44'22.783"W	0.00	
6017.00†	0.000	179.921	5963.79	-21.56	20.68	-636.94	40°06'11.015"N	104°44'22.783"W	0.00	
6117.00†	0.000	179.921	6063.79	-21.56	20.68	-636.94	40°06'11.015"N	104°44'22.783"W	0.00	
6217.00†	0.000	179.921	6163.79	-21.56	20.68	-636.94	40°06'11.015"N	104°44'22.783"W	0.00	
6317.00†	0.000	179.921	6263.79	-21.56	20.68	-636.94	40°06'11.015"N	104°44'22.783"W	0.00	
6417.00†	0.000	179.921	6363.79	-21.56	20.68	-636.94	40°06'11.015"N	104°44'22.783"W	0.00	
6517.00†	0.000	179.921	6463.79	-21.56	20.68	-636.94	40°06'11.015"N	104°44'22.783"W	0.00	
6617.00†	0.000	179.921	6563.79	-21.56	20.68	-636.94	40°06'11.015"N	104°44'22.783"W	0.00	
6717.00†	0.000	179.921	6663.79	-21.56	20.68	-636.94	40°06'11.015"N	104°44'22.783"W	0.00	
6782.25†	0.000	179.921	6729.04	-21.56	20.68	-636.94	40°06'11.015"N	104°44'22.783"W	0.00	4 1/2" LINER TOP
6817.00†	0.000	179.921	6763.79	-21.56	20.68	-636.94	40°06'11.015"N	104°44'22.783"W	0.00	
6882.25	0.000	179.921	6829.05	-21.56	20.68	-636.94	40°06'11.015"N	104°44'22.783"W	0.00	KOP, BUILD @ 10°/100'
6917.00†	3.475	179.921	6863.77	-20.51	19.63	-636.94	40°06'11.005"N	104°44'22.783"W	10.00	
7017.00†	13.475	179.921	6962.55	-5.79	4.91	-636.92	40°06'10.859"N	104°44'22.783"W	10.00	
7117.00†	23.475	179.921	7057.28	25.86	-26.74	-636.88	40°06'10.547"N	104°44'22.782"W	10.00	
7217.00†	33.475	179.921	7145.07	73.47	-74.35	-636.81	40°06'10.076"N	104°44'22.781"W	10.00	
7279.21†	39.696	179.921	7195.00	110.53	-111.41	-636.76	40°06'09.710"N	104°44'22.780"W	10.00	SHARON SPRINGS
7317.00†	43.475	179.921	7223.26	135.61	-136.49	-636.73	40°06'09.462"N	104°44'22.780"W	10.00	
7337.67†	45.542	179.921	7238.00	150.10	-150.98	-636.71	40°06'09.319"N	104°44'22.780"W	10.00	NIOBRARA A
7417.00†	53.475	179.921	7289.47	210.38	-211.26	-636.62	40°06'08.723"N	104°44'22.779"W	10.00	
7483.77†	60.152	179.921	7326.00	266.23	-267.11	-636.54	40°06'08.171"N	104°44'22.778"W	10.00	NIOBRARA B CHALK
7517.00†	63.475	179.921	7341.69	295.52	-296.39	-636.50	40°06'07.882"N	104°44'22.777"W	10.00	
7617.00†	73.475	179.921	7378.34	388.42	-389.30	-636.38	40°06'06.964"N	104°44'22.775"W	10.00	



Planned Wellpath Report

BADDING 37N-35HZ (PERMIT REV-2) PWP

Page 4 of 7



REFERENCE WELLPATH IDENTIFICATION			
Operator	KERR-MCGEE OIL & GAS ONSHORE LP	Slot	SLOT#01 BADDING 37N-35HZ (350'FSL & 704'FEL, SEC.26)
Area	COLORADO	Well	BADDING 37N-35HZ
Field	WELD COUNTY (KERR MCGEE)	Wellbore	BADDING 37N-35HZ PWB
Facility	SEC.26-T2N-R66W		

WELLPATH DATA (146 stations) † = interpolated/extrapolated station										
MD [ft]	Inclination [°]	Azimuth [°]	TVD [ft]	Vert Sect [ft]	North [ft]	East [ft]	Latitude	Longitude	DLS [°/100ft]	Comments
7692.58†	81.033	179.921	7395.00	462.09	-462.96	-636.27	40°06'06.236"N	104°44'22.774"W	10.00	NIOBRARA C
7717.00†	83.475	179.921	7398.29	486.28	-487.16	-636.24	40°06'05.997"N	104°44'22.774"W	10.00	
7783.37	90.111	179.921	7402.00	552.51	-553.39	-636.15	40°06'05.342"N	104°44'22.772"W	10.00	LANDING POINT
7817.00†	90.111	179.921	7401.94	586.14	-587.02	-636.10	40°06'05.010"N	104°44'22.772"W	0.00	
7917.00†	90.111	179.921	7401.74	686.14	-687.02	-635.96	40°06'04.022"N	104°44'22.770"W	0.00	
8017.00†	90.111	179.921	7401.55	786.14	-787.02	-635.82	40°06'03.033"N	104°44'22.768"W	0.00	
8117.00†	90.111	179.921	7401.35	886.14	-887.02	-635.69	40°06'02.045"N	104°44'22.766"W	0.00	
8217.00†	90.111	179.921	7401.16	986.14	-987.02	-635.55	40°06'01.057"N	104°44'22.765"W	0.00	
8317.00†	90.111	179.921	7400.96	1086.14	-1087.02	-635.41	40°06'00.069"N	104°44'22.763"W	0.00	
8417.00†	90.111	179.921	7400.77	1186.14	-1187.02	-635.27	40°05'59.081"N	104°44'22.761"W	0.00	
8517.00†	90.111	179.921	7400.58	1286.14	-1287.02	-635.13	40°05'58.092"N	104°44'22.759"W	0.00	
8617.00†	90.111	179.921	7400.38	1386.14	-1387.02	-634.99	40°05'57.104"N	104°44'22.757"W	0.00	
8717.00†	90.111	179.921	7400.19	1486.14	-1487.02	-634.85	40°05'56.116"N	104°44'22.755"W	0.00	
8817.00†	90.111	179.921	7399.99	1586.14	-1587.02	-634.72	40°05'55.128"N	104°44'22.754"W	0.00	
8917.00†	90.111	179.921	7399.80	1686.14	-1687.02	-634.58	40°05'54.140"N	104°44'22.752"W	0.00	
9017.00†	90.111	179.921	7399.60	1786.14	-1787.02	-634.44	40°05'53.151"N	104°44'22.750"W	0.00	
9117.00†	90.111	179.921	7399.41	1886.14	-1887.02	-634.30	40°05'52.163"N	104°44'22.748"W	0.00	
9217.00†	90.111	179.921	7399.21	1986.14	-1987.01	-634.16	40°05'51.175"N	104°44'22.746"W	0.00	
9317.00†	90.111	179.921	7399.02	2086.14	-2087.01	-634.02	40°05'50.187"N	104°44'22.745"W	0.00	
9417.00†	90.111	179.921	7398.82	2186.14	-2187.01	-633.88	40°05'49.199"N	104°44'22.743"W	0.00	
9517.00†	90.111	179.921	7398.63	2286.14	-2287.01	-633.75	40°05'48.210"N	104°44'22.741"W	0.00	
9617.00†	90.111	179.921	7398.44	2386.14	-2387.01	-633.61	40°05'47.222"N	104°44'22.739"W	0.00	
9717.00†	90.111	179.921	7398.24	2486.14	-2487.01	-633.47	40°05'46.234"N	104°44'22.737"W	0.00	
9817.00†	90.111	179.921	7398.05	2586.14	-2587.01	-633.33	40°05'45.246"N	104°44'22.735"W	0.00	
9917.00†	90.111	179.921	7397.85	2686.14	-2687.01	-633.19	40°05'44.257"N	104°44'22.734"W	0.00	
10017.00†	90.111	179.921	7397.66	2786.14	-2787.01	-633.05	40°05'43.269"N	104°44'22.732"W	0.00	
10117.00†	90.111	179.921	7397.46	2886.14	-2887.01	-632.91	40°05'42.281"N	104°44'22.730"W	0.00	
10217.00†	90.111	179.921	7397.27	2986.14	-2987.01	-632.77	40°05'41.293"N	104°44'22.728"W	0.00	
10317.00†	90.111	179.921	7397.07	3086.14	-3087.01	-632.64	40°05'40.305"N	104°44'22.726"W	0.00	
10417.00†	90.111	179.921	7396.88	3186.14	-3187.01	-632.50	40°05'39.316"N	104°44'22.725"W	0.00	
10517.00†	90.111	179.921	7396.69	3286.14	-3287.01	-632.36	40°05'38.328"N	104°44'22.723"W	0.00	
10617.00†	90.111	179.921	7396.49	3386.14	-3387.01	-632.22	40°05'37.340"N	104°44'22.721"W	0.00	
10717.00†	90.111	179.921	7396.30	3486.14	-3487.01	-632.08	40°05'36.352"N	104°44'22.719"W	0.00	
10817.00†	90.111	179.921	7396.10	3586.14	-3587.01	-631.94	40°05'35.364"N	104°44'22.717"W	0.00	
10917.00†	90.111	179.921	7395.91	3686.14	-3687.01	-631.80	40°05'34.375"N	104°44'22.715"W	0.00	
11017.00†	90.111	179.921	7395.71	3786.14	-3787.01	-631.67	40°05'33.387"N	104°44'22.714"W	0.00	
11117.00†	90.111	179.921	7395.52	3886.13	-3887.01	-631.53	40°05'32.399"N	104°44'22.712"W	0.00	
11217.00†	90.111	179.921	7395.32	3986.13	-3987.01	-631.39	40°05'31.411"N	104°44'22.710"W	0.00	
11317.00†	90.111	179.921	7395.13	4086.13	-4087.01	-631.25	40°05'30.422"N	104°44'22.708"W	0.00	
11417.00†	90.111	179.921	7394.93	4186.13	-4187.01	-631.11	40°05'29.434"N	104°44'22.706"W	0.00	
11517.00†	90.111	179.921	7394.74	4286.13	-4287.01	-630.97	40°05'28.446"N	104°44'22.705"W	0.00	
11617.00†	90.111	179.921	7394.55	4386.13	-4387.01	-630.83	40°05'27.458"N	104°44'22.703"W	0.00	
11717.00†	90.111	179.921	7394.35	4486.13	-4487.01	-630.70	40°05'26.470"N	104°44'22.701"W	0.00	
11817.00†	90.111	179.921	7394.16	4586.13	-4587.01	-630.56	40°05'25.481"N	104°44'22.699"W	0.00	
11917.00†	90.111	179.921	7393.96	4686.13	-4687.01	-630.42	40°05'24.493"N	104°44'22.697"W	0.00	



Planned Wellpath Report

BADDING 37N-35HZ (PERMIT REV-2) PWP

Page 5 of 7



REFERENCE WELLPATH IDENTIFICATION

Operator	KERR-MCGEE OIL & GAS ONSHORE LP	Slot	SLOT#01 BADDING 37N-35HZ (350'FSL & 704'FEL, SEC.26)
Area	COLORADO	Well	BADDING 37N-35HZ
Field	WELD COUNTY (KERR MCGEE)	Wellbore	BADDING 37N-35HZ PWB
Facility	SEC.26-T2N-R66W		

WELLPATH DATA (146 stations) † = interpolated/extrapolated station

MD [ft]	Inclination [°]	Azimuth [°]	TVD [ft]	Vert Sect [ft]	North [ft]	East [ft]	Latitude	Longitude	DLS [°/100ft]	Comments
12017.00†	90.111	179.921	7393.77	4786.13	-4787.01	-630.28	40°05'23.505"N	104°44'22.696"W	0.00	
12117.00†	90.111	179.921	7393.57	4886.13	-4887.01	-630.14	40°05'22.517"N	104°44'22.694"W	0.00	
12217.00†	90.111	179.921	7393.38	4986.13	-4987.01	-630.00	40°05'21.529"N	104°44'22.692"W	0.00	
12317.00†	90.111	179.921	7393.18	5086.13	-5087.01	-629.86	40°05'20.540"N	104°44'22.690"W	0.00	
12417.00†	90.111	179.921	7392.99	5186.13	-5187.01	-629.73	40°05'19.552"N	104°44'22.688"W	0.00	
12517.00†	90.111	179.921	7392.79	5286.13	-5287.01	-629.59	40°05'18.564"N	104°44'22.686"W	0.00	
12617.00†	90.111	179.921	7392.60	5386.13	-5387.01	-629.45	40°05'17.576"N	104°44'22.685"W	0.00	
12717.00†	90.111	179.921	7392.41	5486.13	-5487.00	-629.31	40°05'16.587"N	104°44'22.683"W	0.00	
12817.00†	90.111	179.921	7392.21	5586.13	-5587.00	-629.17	40°05'15.599"N	104°44'22.681"W	0.00	
12917.00†	90.111	179.921	7392.02	5686.13	-5687.00	-629.03	40°05'14.611"N	104°44'22.679"W	0.00	
12925.71	90.111	179.921	7392.00 ¹	5694.84	-5695.71	-629.02	40°05'14.525"N	104°44'22.679"W	0.00	TOTAL DEPTH

HOLE & CASING SECTIONS -

Ref Wellbore: BADDING 37N-35HZ PWB Ref Wellpath: BADDING 37N-35HZ (PERMIT REV-2) PWP									
String/Diameter	Start MD [ft]	End MD [ft]	Interval [ft]	Start TVD [ft]	End TVD [ft]	Start N/S [ft]	Start E/W [ft]	End N/S [ft]	End E/W [ft]
13.5in Open Hole	17.00	1304.00	1287.00	17.00	1304.00	0.00	0.00	0.00	0.00
9.625in Casing Surface	17.00	1304.00	1287.00	17.00	1304.00	0.00	0.00	0.00	0.00
8.75in Open Hole	1304.00	7783.37	6479.37	1304.00	7402.00	0.00	0.00	-553.39	-636.15
7in Casing Intermediate	17.00	7783.37	7766.37	17.00	7402.00	0.00	0.00	-553.39	-636.15
6.125in Open Hole	7783.37	12925.71	5142.34	7402.00	7392.00	-553.39	-636.15	-5695.71	-629.02
4.5in Casing Production	17.00	12925.71	12908.71	17.00	7392.00	0.00	0.00	-5695.71	-629.02



Planned Wellpath Report

BADDING 37N-35HZ (PERMIT REV-2) PWP

Page 6 of 7



REFERENCE WELLPATH IDENTIFICATION

Operator	KERR-MCGEE OIL & GAS ONSHORE LP	Slot	SLOT#01 BADDING 37N-35HZ (350'FSL & 704'FEL, SEC.26)
Area	COLORADO	Well	BADDING 37N-35HZ
Field	WELD COUNTY (KERR MCGEE)	Wellbore	BADDING 37N-35HZ PWB
Facility	SEC.26-T2N-R66W		

TARGETS

Name	MD [ft]	TVD [ft]	North [ft]	East [ft]	Grid East [US ft]	Grid North [US ft]	Latitude	Longitude	Shape
BADDING SECTION 26 LINES		0.00	0.00	0.00	3213324.01	1281285.67	40°06'10.811"N	104°44'14.586"W	polygon
BADDING SECTION 35 LINES		0.00	0.00	0.00	3213324.01	1281285.67	40°06'10.811"N	104°44'14.586"W	polygon
1) BADDING 37N-35HZ BHL ON PLAT REV-1 (1'FSL & 1342'FEL, SEC.35)	12925.71	7392.00	-5695.71	-629.02	3212744.02	1275585.00	40°05'14.525"N	104°44'22.679"W	point
BADDING 37N-35HZ LAND BOX		7400.00	0.00	0.00	3213324.01	1281285.67	40°06'10.811"N	104°44'14.586"W	polygon

SURVEY PROGRAM - Ref Wellbore: BADDING 37N-35HZ PWB Ref Wellpath: BADDING 37N-35HZ (PERMIT REV-2) PWP

Start MD [ft]	End MD [ft]	Positional Uncertainty Model	Log Name/Comment	Wellbore
17.00	7783.37	NaviTrak (Standard)		BADDING 37N-35HZ PWB
7783.37	12925.71	OnTrak (Standard)		BADDING 37N-35HZ PWB



Planned Wellpath Report

BADDING 37N-35HZ (PERMIT REV-2) PWP

Page 7 of 7



REFERENCE WELLPATH IDENTIFICATION

Operator	KERR-MCGEE OIL & GAS ONSHORE LP	Slot	SLOT#01 BADDING 37N-35HZ (350'FSL & 704'FEL, SEC.26)
Area	COLORADO	Well	BADDING 37N-35HZ
Field	WELD COUNTY (KERR MCGEE)	Wellbore	BADDING 37N-35HZ PWB
Facility	SEC.26-T2N-R66W		

WELLPATH COMMENTS

MD [ft]	Inclination [°]	Azimuth [°]	TVD [ft]	Comment
1254.00	0.000	271.860	1254.00	FOX HILLS BASE
4323.59	10.000	271.860	4285.00	PARKMAN
4706.41	10.000	271.860	4662.00	SUSSEX
6782.25	0.000	179.921	6729.04	4 1/2" LINER TOP
7279.21	39.696	179.921	7195.00	SHARON SPRINGS
7337.67	45.542	179.921	7238.00	NIOBRARA A
7483.77	60.152	179.921	7326.00	NIOBRARA B CHALK
7692.58	81.033	179.921	7395.00	NIOBRARA C