

KERR-MCGEE OIL & GAS ONSHORE LP

Location: COLORADO Slot: SLOT#05 BADDING 16N-35HZ (350'FSL & 600'FEL, SEC.26)
Field: WELD COUNTY (KERR MCGEE) Well: BADDING 16N-35HZ
Facility: SEC.26-T2N-R66W Wellbore: BADDING 16N-35HZ PWB

Plot reference wellpath is BADDING 16N-35HZ (PERMIT REV-2) PWP

True vertical depths are referenced to Rig on SLOT#05 BADDING 16N-35HZ (350'FSL & 600'FEL, SEC.26) (RKB)	Grid System: NAD83 / Lambert Colorado SP, Northern Zone (501), US feet
Measured depths are referenced to Rig on SLOT#05 BADDING 16N-35HZ (350'FSL & 600'FEL, SEC.26) (RKB)	North Reference: True north
Rig on SLOT#05 BADDING 16N-35HZ (350'FSL & 600'FEL, SEC.26) (RKB) to Mean Sea Level: 5132 feet	Scale: True distance
Mean Sea Level to Mud line (At Slot: SLOT#05 BADDING 16N-35HZ (350'FSL & 600'FEL, SEC.26)): 0 feet	Depths are in feet
Coordinates are in feet referenced to Slot	Created by: wllg02 on 8/22/2013

Location Information

Facility Name	Grid East (US ft)	Grid North (US ft)	Latitude	Longitude
SEC.26-T2N-R66W	3213323.933	1281285.871	40°06'10.811"N	104°44'14.587"W
Slot	Local N (ft)	Local E (ft)	Grid East (US ft)	Grid North (US ft)
SLOT#05 BADDING 16N-35HZ (350'FSL & 600'FEL, SEC.26)	0.30	104.13	3213428.048	1281286.871
Rig on SLOT#05 BADDING 16N-35HZ (350'FSL & 600'FEL, SEC.26) (RKB) to Mud line (At Slot: SLOT#05 BADDING 16N-35HZ (350'FSL & 600'FEL, SEC.26))				5132ft
Mean Sea Level to Mud line (At Slot: SLOT#05 BADDING 16N-35HZ (350'FSL & 600'FEL, SEC.26))				0ft
Rig on SLOT#05 BADDING 16N-35HZ (350'FSL & 600'FEL, SEC.26) (RKB) to Mean Sea Level				5132ft

Survey Program

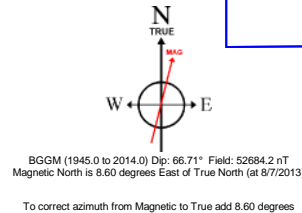
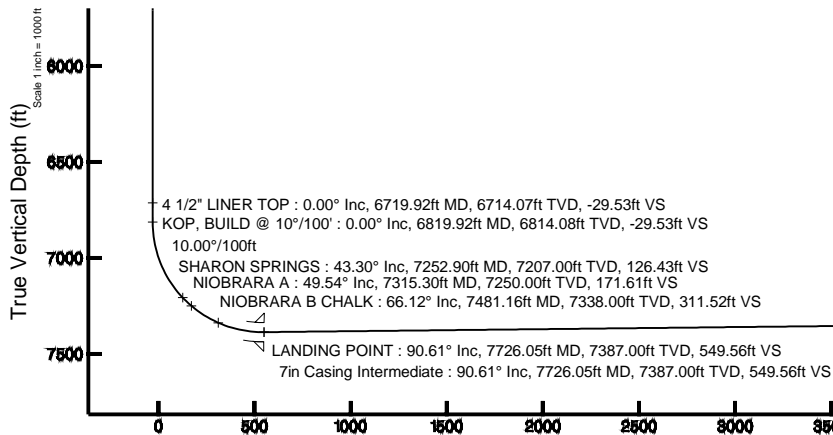
Start MD (ft)	End MD (ft)	Tool	Model	Log Name/Comment	Wellbore
17.00	7726.05	NaviTrak	NaviTrak (Standard)		BADDING 16N-35HZ PWB
7726.05	12866.41	OnTrak	OnTrak (Standard)		BADDING 16N-35HZ PWB

Well Profile Data

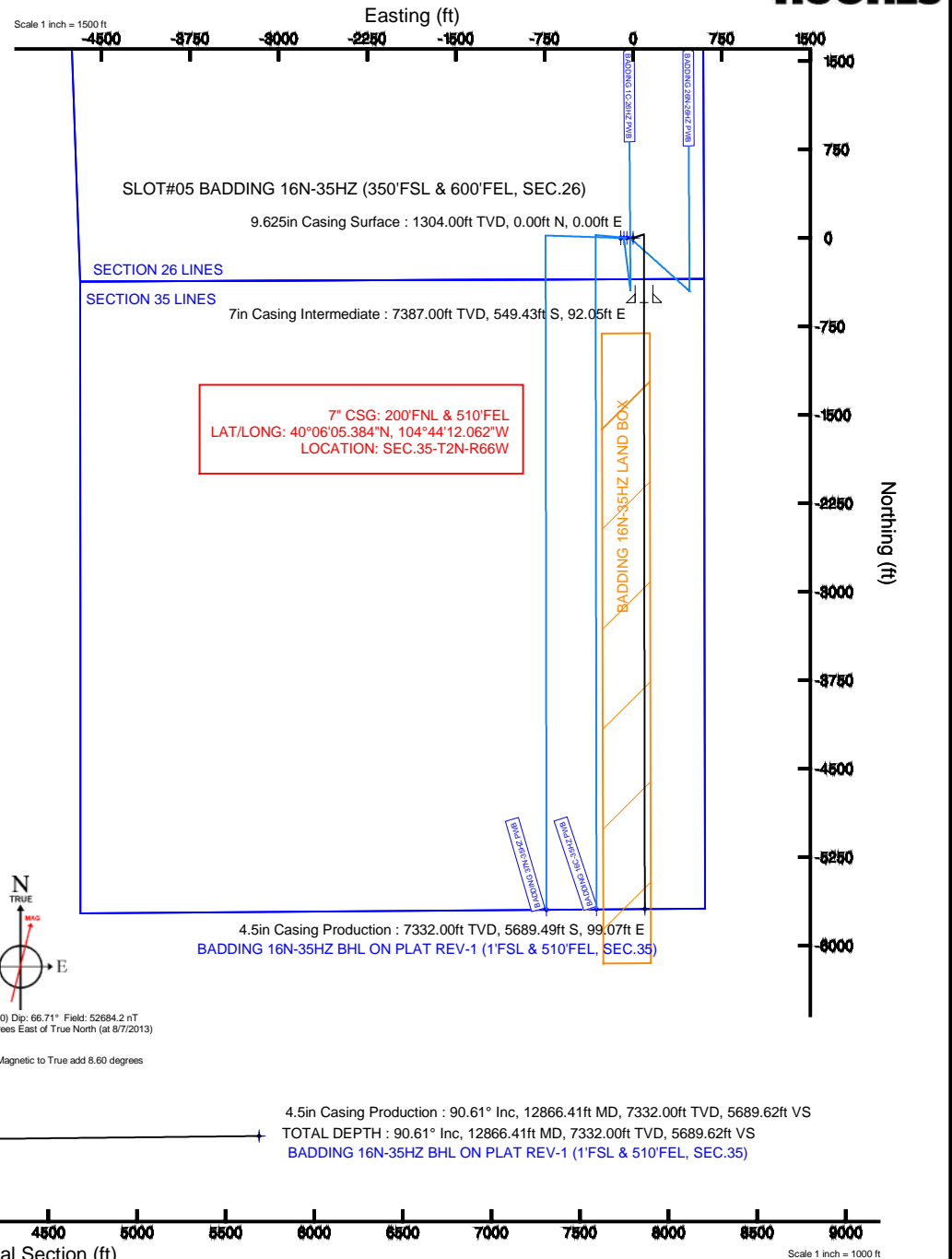
Design Comment	MD (ft)	Inc (°)	Az (°)	TVD (ft)	Local N (ft)	Local E (ft)	DLS (°/100ft)	VS (ft)
TIE-ON	17.00	0.000	72.000	17.00	0.00	0.00	0.00	0.00
BEGIN NUDGE	1450.00	0.000	72.000	1450.00	0.00	0.00	0.00	0.00
END NUDGE	1950.00	10.000	72.000	1947.47	13.45	41.39	2.00	-13.39
BEGIN DROP	2001.31	10.000	72.000	1998.00	16.20	49.87	0.00	-16.13
END DROP	2501.31	0.000	179.922	2495.47	29.65	91.26	2.00	-29.53
KOP, BUILD @ 10°/100'	6819.92	0.000	179.922	6814.08	29.65	91.26	0.00	-29.53
LANDING POINT	7726.05	90.613	179.922	7387.00	-549.44	92.05	10.00	549.56
TOTAL DEPTH	12866.41	90.613	179.922	7332.00	-5689.49	99.07	0.00	5689.62

Targets

Name	MD (ft)	TVD (ft)	Local N (ft)	Local E (ft)	Grid East (US ft)	Grid North (US ft)	Latitude	Longitude
BADDING SECTION 26 LINES		0.00	-0.30	-104.05	3213324.01	1281285.87	40°06'10.811"N	104°44'14.588"W
BADDING SECTION 35 LINES		0.00	-0.30	-104.05	3213324.01	1281285.87	40°06'10.811"N	104°44'14.588"W
BADDING 16N-35HZ BHL ON PLAT REV-1 (1'FSL & 510'FEL, SEC.35)	12866.41	7332.00	-5689.49	99.07	3213576.06	1279598.68	40°05'14.590"N	104°44'11.972"W
BADDING 16N-35HZ LAND BOX		7400.00	0.00	0.00	3213428.05	1281286.87	40°06'10.814"N	104°44'13.247"W



Azimuth 179.92° with reference 0.00 N, 0.00 E





Planned Wellpath Report

BADDING 16N-35HZ (PERMIT REV-2) PWP

Page 1 of 7



REFERENCE WELLPATH IDENTIFICATION

Operator	KERR-MCGEE OIL & GAS ONSHORE LP	Slot	SLOT#05 BADDING 16N-35HZ (350'FSL & 600'FEL, SEC.26)
Area	COLORADO	Well	BADDING 16N-35HZ
Field	WELD COUNTY (KERR MCGEE)	Wellbore	BADDING 16N-35HZ PWB
Facility	SEC.26-T2N-R66W		

REPORT SETUP INFORMATION

Projection System	NAD83 / Lambert Colorado SP, Northern Zone (501), US feet	Software System	WellArchitect® 4.0.0
North Reference	True	User	Wilsjef02
Scale	0.99996	Report Generated	8/22/2013 at 13:41:43
Convergence at slot	n/a	Database/Source file	WellArchitectDB/BADDING_16N-35HZ_PWB.xml

WELLPATH LOCATION

	Local coordinates		Grid coordinates		Geographic coordinates	
	North[ft]	East[ft]	Easting[US ft]	Northing[US ft]	Latitude	Longitude
Slot Location	0.30	104.13	3213428.05	1281286.87	40°06'10.814"N	104°44'13.247"W
Facility Reference Pt			3213323.93	1281285.67	40°06'10.811"N	104°44'14.587"W
Field Reference Pt			3197771.84	1268891.29	40°04'09.600"N	104°47'36.000"W

WELLPATH DATUM

Calculation method	Minimum curvature	Rig on SLOT#05 BADDING 16N-35HZ (350'FSL & 600'FEL, SEC.26) (RKB) to Facility Vertical Datum	5132.00ft
Horizontal Reference Pt	Slot	Rig on SLOT#05 BADDING 16N-35HZ (350'FSL & 600'FEL, SEC.26) (RKB) to Mean Sea Level	5132.00ft
Vertical Reference Pt	Rig on SLOT#05 BADDING 16N-35HZ (350'FSL & 600'FEL, SEC.26) (RKB)	Rig on SLOT#05 BADDING 16N-35HZ (350'FSL & 600'FEL, SEC.26) (RKB) to Mud Line at Slot (SLOT#05 BADDING 16N-35HZ (350'FSL & 600'FEL, SEC.26))	5132.00ft
MD Reference Pt	Rig on SLOT#05 BADDING 16N-35HZ (350'FSL & 600'FEL, SEC.26) (RKB)	Section Origin	N 0.00, E 0.00 ft
Field Vertical Reference	Mean Sea Level	Section Azimuth	179.92°



Planned Wellpath Report

BADDING 16N-35HZ (PERMIT REV-2) PWP

Page 2 of 7



REFERENCE WELLPATH IDENTIFICATION

Operator	KERR-MCGEE OIL & GAS ONSHORE LP	Slot	SLOT#05 BADDING 16N-35HZ (350'FSL & 600'FEL, SEC.26)
Area	COLORADO	Well	BADDING 16N-35HZ
Field	WELD COUNTY (KERR MCGEE)	Wellbore	BADDING 16N-35HZ PWB
Facility	SEC.26-T2N-R66W		

WELLPATH DATA (144 stations) † = interpolated/extrapolated station

MD [ft]	Inclination [°]	Azimuth [°]	TVD [ft]	Vert Sect [ft]	North [ft]	East [ft]	Latitude	Longitude	DLS [°/100ft]	Comments
0.00†	0.000	72.000	0.00	0.00	0.00	0.00	40°06'10.814"N	104°44'13.247"W	0.00	
17.00	0.000	72.000	17.00	0.00	0.00	0.00	40°06'10.814"N	104°44'13.247"W	0.00	TIE-ON
117.00†	0.000	72.000	117.00	0.00	0.00	0.00	40°06'10.814"N	104°44'13.247"W	0.00	
217.00†	0.000	72.000	217.00	0.00	0.00	0.00	40°06'10.814"N	104°44'13.247"W	0.00	
317.00†	0.000	72.000	317.00	0.00	0.00	0.00	40°06'10.814"N	104°44'13.247"W	0.00	
417.00†	0.000	72.000	417.00	0.00	0.00	0.00	40°06'10.814"N	104°44'13.247"W	0.00	
517.00†	0.000	72.000	517.00	0.00	0.00	0.00	40°06'10.814"N	104°44'13.247"W	0.00	
617.00†	0.000	72.000	617.00	0.00	0.00	0.00	40°06'10.814"N	104°44'13.247"W	0.00	
717.00†	0.000	72.000	717.00	0.00	0.00	0.00	40°06'10.814"N	104°44'13.247"W	0.00	
817.00†	0.000	72.000	817.00	0.00	0.00	0.00	40°06'10.814"N	104°44'13.247"W	0.00	
917.00†	0.000	72.000	917.00	0.00	0.00	0.00	40°06'10.814"N	104°44'13.247"W	0.00	
1017.00†	0.000	72.000	1017.00	0.00	0.00	0.00	40°06'10.814"N	104°44'13.247"W	0.00	
1117.00†	0.000	72.000	1117.00	0.00	0.00	0.00	40°06'10.814"N	104°44'13.247"W	0.00	
1217.00†	0.000	72.000	1217.00	0.00	0.00	0.00	40°06'10.814"N	104°44'13.247"W	0.00	
1254.00†	0.000	72.000	1254.00	0.00	0.00	0.00	40°06'10.814"N	104°44'13.247"W	0.00	FOX HILLS BASE
1317.00†	0.000	72.000	1317.00	0.00	0.00	0.00	40°06'10.814"N	104°44'13.247"W	0.00	
1417.00†	0.000	72.000	1417.00	0.00	0.00	0.00	40°06'10.814"N	104°44'13.247"W	0.00	
1450.00	0.000	72.000	1450.00	0.00	0.00	0.00	40°06'10.814"N	104°44'13.247"W	0.00	BEGIN NUDGE
1517.00†	1.340	72.000	1516.99	-0.24	0.24	0.75	40°06'10.816"N	104°44'13.237"W	2.00	
1617.00†	3.340	72.000	1616.91	-1.50	1.50	4.63	40°06'10.829"N	104°44'13.187"W	2.00	
1717.00†	5.340	72.000	1716.61	-3.83	3.84	11.82	40°06'10.852"N	104°44'13.095"W	2.00	
1817.00†	7.340	72.000	1816.00	-7.22	7.25	22.33	40°06'10.886"N	104°44'12.960"W	2.00	
1917.00†	9.340	72.000	1914.93	-11.69	11.74	36.12	40°06'10.930"N	104°44'12.782"W	2.00	
1950.00	10.000	72.000	1947.47	-13.39	13.45	41.39	40°06'10.947"N	104°44'12.714"W	2.00	END NUDGE
2001.31	10.000	72.000	1998.00	-16.13	16.20	49.87	40°06'10.974"N	104°44'12.605"W	0.00	BEGIN DROP
2017.00†	9.686	72.000	2013.45	-16.96	17.03	52.42	40°06'10.982"N	104°44'12.572"W	2.00	
2117.00†	7.686	72.000	2112.30	-21.61	21.70	66.78	40°06'11.028"N	104°44'12.388"W	2.00	
2217.00†	5.686	72.000	2211.62	-25.19	25.30	77.85	40°06'11.064"N	104°44'12.245"W	2.00	
2317.00†	3.686	72.000	2311.28	-27.70	27.82	85.62	40°06'11.089"N	104°44'12.145"W	2.00	
2417.00†	1.686	72.000	2411.16	-29.15	29.27	90.08	40°06'11.103"N	104°44'12.088"W	2.00	
2501.31	0.000	179.922	2495.47	-29.53	29.65	91.26	40°06'11.107"N	104°44'12.073"W	2.00	END DROP
2517.00†	0.000	179.922	2511.15	-29.53	29.65	91.26	40°06'11.107"N	104°44'12.073"W	0.00	
2617.00†	0.000	179.922	2611.15	-29.53	29.65	91.26	40°06'11.107"N	104°44'12.073"W	0.00	
2717.00†	0.000	179.922	2711.15	-29.53	29.65	91.26	40°06'11.107"N	104°44'12.073"W	0.00	
2817.00†	0.000	179.922	2811.15	-29.53	29.65	91.26	40°06'11.107"N	104°44'12.073"W	0.00	
2917.00†	0.000	179.922	2911.15	-29.53	29.65	91.26	40°06'11.107"N	104°44'12.073"W	0.00	
3017.00†	0.000	179.922	3011.15	-29.53	29.65	91.26	40°06'11.107"N	104°44'12.073"W	0.00	
3117.00†	0.000	179.922	3111.15	-29.53	29.65	91.26	40°06'11.107"N	104°44'12.073"W	0.00	
3217.00†	0.000	179.922	3211.15	-29.53	29.65	91.26	40°06'11.107"N	104°44'12.073"W	0.00	
3317.00†	0.000	179.922	3311.15	-29.53	29.65	91.26	40°06'11.107"N	104°44'12.073"W	0.00	
3417.00†	0.000	179.922	3411.15	-29.53	29.65	91.26	40°06'11.107"N	104°44'12.073"W	0.00	
3517.00†	0.000	179.922	3511.15	-29.53	29.65	91.26	40°06'11.107"N	104°44'12.073"W	0.00	
3617.00†	0.000	179.922	3611.15	-29.53	29.65	91.26	40°06'11.107"N	104°44'12.073"W	0.00	
3717.00†	0.000	179.922	3711.15	-29.53	29.65	91.26	40°06'11.107"N	104°44'12.073"W	0.00	
3817.00†	0.000	179.922	3811.15	-29.53	29.65	91.26	40°06'11.107"N	104°44'12.073"W	0.00	



Planned Wellpath Report

BADDING 16N-35HZ (PERMIT REV-2) PWP

Page 3 of 7



REFERENCE WELLPATH IDENTIFICATION

Operator	KERR-MCGEE OIL & GAS ONSHORE LP	Slot	SLOT#05 BADDING 16N-35HZ (350'FSL & 600'FEL, SEC.26)
Area	COLORADO	Well	BADDING 16N-35HZ
Field	WELD COUNTY (KERR MCGEE)	Wellbore	BADDING 16N-35HZ PWB
Facility	SEC.26-T2N-R66W		

WELLPATH DATA (144 stations) † = interpolated/extrapolated station

MD [ft]	Inclination [°]	Azimuth [°]	TVD [ft]	Vert Sect [ft]	North [ft]	East [ft]	Latitude	Longitude	DLS [°/100ft]	Comments
3917.00†	0.000	179.922	3911.15	-29.53	29.65	91.26	40°06'11.107"N	104°44'12.073"W	0.00	
4017.00†	0.000	179.922	4011.15	-29.53	29.65	91.26	40°06'11.107"N	104°44'12.073"W	0.00	
4117.00†	0.000	179.922	4111.15	-29.53	29.65	91.26	40°06'11.107"N	104°44'12.073"W	0.00	
4217.00†	0.000	179.922	4211.15	-29.53	29.65	91.26	40°06'11.107"N	104°44'12.073"W	0.00	
4302.85†	0.000	179.922	4297.00	-29.53	29.65	91.26	40°06'11.107"N	104°44'12.073"W	0.00	PARKMAN
4317.00†	0.000	179.922	4311.15	-29.53	29.65	91.26	40°06'11.107"N	104°44'12.073"W	0.00	
4417.00†	0.000	179.922	4411.15	-29.53	29.65	91.26	40°06'11.107"N	104°44'12.073"W	0.00	
4517.00†	0.000	179.922	4511.15	-29.53	29.65	91.26	40°06'11.107"N	104°44'12.073"W	0.00	
4617.00†	0.000	179.922	4611.15	-29.53	29.65	91.26	40°06'11.107"N	104°44'12.073"W	0.00	
4679.85†	0.000	179.922	4674.00	-29.53	29.65	91.26	40°06'11.107"N	104°44'12.073"W	0.00	SUSSEX
4717.00†	0.000	179.922	4711.15	-29.53	29.65	91.26	40°06'11.107"N	104°44'12.073"W	0.00	
4817.00†	0.000	179.922	4811.15	-29.53	29.65	91.26	40°06'11.107"N	104°44'12.073"W	0.00	
4917.00†	0.000	179.922	4911.15	-29.53	29.65	91.26	40°06'11.107"N	104°44'12.073"W	0.00	
5017.00†	0.000	179.922	5011.15	-29.53	29.65	91.26	40°06'11.107"N	104°44'12.073"W	0.00	
5117.00†	0.000	179.922	5111.15	-29.53	29.65	91.26	40°06'11.107"N	104°44'12.073"W	0.00	
5217.00†	0.000	179.922	5211.15	-29.53	29.65	91.26	40°06'11.107"N	104°44'12.073"W	0.00	
5317.00†	0.000	179.922	5311.15	-29.53	29.65	91.26	40°06'11.107"N	104°44'12.073"W	0.00	
5417.00†	0.000	179.922	5411.15	-29.53	29.65	91.26	40°06'11.107"N	104°44'12.073"W	0.00	
5517.00†	0.000	179.922	5511.15	-29.53	29.65	91.26	40°06'11.107"N	104°44'12.073"W	0.00	
5617.00†	0.000	179.922	5611.15	-29.53	29.65	91.26	40°06'11.107"N	104°44'12.073"W	0.00	
5717.00†	0.000	179.922	5711.15	-29.53	29.65	91.26	40°06'11.107"N	104°44'12.073"W	0.00	
5817.00†	0.000	179.922	5811.15	-29.53	29.65	91.26	40°06'11.107"N	104°44'12.073"W	0.00	
5917.00†	0.000	179.922	5911.15	-29.53	29.65	91.26	40°06'11.107"N	104°44'12.073"W	0.00	
6017.00†	0.000	179.922	6011.15	-29.53	29.65	91.26	40°06'11.107"N	104°44'12.073"W	0.00	
6117.00†	0.000	179.922	6111.15	-29.53	29.65	91.26	40°06'11.107"N	104°44'12.073"W	0.00	
6217.00†	0.000	179.922	6211.15	-29.53	29.65	91.26	40°06'11.107"N	104°44'12.073"W	0.00	
6317.00†	0.000	179.922	6311.15	-29.53	29.65	91.26	40°06'11.107"N	104°44'12.073"W	0.00	
6417.00†	0.000	179.922	6411.15	-29.53	29.65	91.26	40°06'11.107"N	104°44'12.073"W	0.00	
6517.00†	0.000	179.922	6511.15	-29.53	29.65	91.26	40°06'11.107"N	104°44'12.073"W	0.00	
6617.00†	0.000	179.922	6611.15	-29.53	29.65	91.26	40°06'11.107"N	104°44'12.073"W	0.00	
6717.00†	0.000	179.922	6711.15	-29.53	29.65	91.26	40°06'11.107"N	104°44'12.073"W	0.00	
6719.92†	0.000	179.922	6714.07	-29.53	29.65	91.26	40°06'11.107"N	104°44'12.073"W	0.00	4 1/2" LINER TOP
6817.00†	0.000	179.922	6811.15	-29.53	29.65	91.26	40°06'11.107"N	104°44'12.073"W	0.00	
6819.92	0.000	179.922	6814.08	-29.53	29.65	91.26	40°06'11.107"N	104°44'12.073"W	0.00	KOP, BUILD @ 10°/100'
6917.00†	9.708	179.922	6910.69	-21.32	21.45	91.27	40°06'11.026"N	104°44'12.072"W	10.00	
7017.00†	19.708	179.922	7007.29	4.03	-3.91	91.31	40°06'10.775"N	104°44'12.072"W	10.00	
7117.00†	29.708	179.922	7098.02	45.78	-45.65	91.36	40°06'10.363"N	104°44'12.071"W	10.00	
7217.00†	39.708	179.922	7180.12	102.65	-102.52	91.44	40°06'09.801"N	104°44'12.070"W	10.00	
7252.90†	43.297	179.922	7207.00	126.43	-126.30	91.47	40°06'09.566"N	104°44'12.070"W	10.00	SHARON SPRINGS
7315.30†	49.538	179.922	7250.00	171.61	-171.49	91.53	40°06'09.119"N	104°44'12.069"W	10.00	NIOBRARA A
7317.00†	49.708	179.922	7251.10	172.90	-172.78	91.54	40°06'09.107"N	104°44'12.069"W	10.00	
7417.00†	59.708	179.922	7308.80	254.42	-254.30	91.65	40°06'08.301"N	104°44'12.068"W	10.00	
7481.16†	66.124	179.922	7338.00	311.52	-311.39	91.72	40°06'07.737"N	104°44'12.067"W	10.00	NIOBRARA B CHALK
7517.00†	69.708	179.922	7351.47	344.72	-344.60	91.77	40°06'07.409"N	104°44'12.066"W	10.00	
7617.00†	79.708	179.922	7377.81	441.06	-440.93	91.90	40°06'06.457"N	104°44'12.064"W	10.00	



Planned Wellpath Report

BADDING 16N-35HZ (PERMIT REV-2) PWP

Page 4 of 7



REFERENCE WELLPATH IDENTIFICATION				
Operator	KERR-MCGEE OIL & GAS ONSHORE LP	Slot	SLOT#05 BADDING 16N-35HZ (350'FSL & 600'FEL, SEC.26)	
Area	COLORADO	Well	BADDING 16N-35HZ	
Field	WELD COUNTY (KERR MCGEE)	Wellbore	BADDING 16N-35HZ PWB	
Facility	SEC.26-T2N-R66W			

WELLPATH DATA (144 stations) † = interpolated/extrapolated station										
MD [ft]	Inclination [°]	Azimuth [°]	TVD [ft]	Vert Sect [ft]	North [ft]	East [ft]	Latitude	Longitude	DLS [°/100ft]	Comments
7717.00†	89.708	179.922	7387.03	540.51	-540.38	92.04	40°06'05.474"N	104°44'12.063"W	10.00	
7726.05	90.613	179.922	7387.00	549.56	-549.44	92.05	40°06'05.384"N	104°44'12.062"W	10.00	LANDING POINT
7817.00†	90.613	179.922	7386.03	640.50	-640.38	92.17	40°06'04.486"N	104°44'12.061"W	0.00	
7917.00†	90.613	179.922	7384.96	740.49	-740.37	92.31	40°06'03.498"N	104°44'12.059"W	0.00	
8017.00†	90.613	179.922	7383.89	840.49	-840.36	92.45	40°06'02.509"N	104°44'12.057"W	0.00	
8117.00†	90.613	179.922	7382.82	940.48	-940.36	92.58	40°06'01.521"N	104°44'12.056"W	0.00	
8217.00†	90.613	179.922	7381.75	1040.48	-1040.35	92.72	40°06'00.533"N	104°44'12.054"W	0.00	
8317.00†	90.613	179.922	7380.68	1140.47	-1140.35	92.86	40°05'59.545"N	104°44'12.052"W	0.00	
8417.00†	90.613	179.922	7379.61	1240.47	-1240.34	92.99	40°05'58.557"N	104°44'12.050"W	0.00	
8517.00†	90.613	179.922	7378.54	1340.46	-1340.33	93.13	40°05'57.569"N	104°44'12.049"W	0.00	
8617.00†	90.613	179.922	7377.47	1440.45	-1440.33	93.27	40°05'56.580"N	104°44'12.047"W	0.00	
8717.00†	90.613	179.922	7376.40	1540.45	-1540.32	93.40	40°05'55.592"N	104°44'12.045"W	0.00	
8817.00†	90.613	179.922	7375.33	1640.44	-1640.32	93.54	40°05'54.604"N	104°44'12.043"W	0.00	
8917.00†	90.613	179.922	7374.26	1740.44	-1740.31	93.68	40°05'53.616"N	104°44'12.042"W	0.00	
9017.00†	90.613	179.922	7373.19	1840.43	-1840.31	93.81	40°05'52.628"N	104°44'12.040"W	0.00	
9117.00†	90.613	179.922	7372.12	1940.43	-1940.30	93.95	40°05'51.640"N	104°44'12.038"W	0.00	
9217.00†	90.613	179.922	7371.05	2040.42	-2040.29	94.09	40°05'50.652"N	104°44'12.036"W	0.00	
9317.00†	90.613	179.922	7369.98	2140.41	-2140.29	94.22	40°05'49.663"N	104°44'12.035"W	0.00	
9417.00†	90.613	179.922	7368.91	2240.41	-2240.28	94.36	40°05'48.675"N	104°44'12.033"W	0.00	
9517.00†	90.613	179.922	7367.84	2340.40	-2340.28	94.49	40°05'47.687"N	104°44'12.031"W	0.00	
9617.00†	90.613	179.922	7366.77	2440.40	-2440.27	94.63	40°05'46.699"N	104°44'12.029"W	0.00	
9717.00†	90.613	179.922	7365.70	2540.39	-2540.27	94.77	40°05'45.711"N	104°44'12.028"W	0.00	
9817.00†	90.613	179.922	7364.63	2640.39	-2640.26	94.90	40°05'44.723"N	104°44'12.026"W	0.00	
9917.00†	90.613	179.922	7363.56	2740.38	-2740.25	95.04	40°05'43.734"N	104°44'12.024"W	0.00	
10017.00†	90.613	179.922	7362.49	2840.37	-2840.25	95.18	40°05'42.746"N	104°44'12.022"W	0.00	
10117.00†	90.613	179.922	7361.42	2940.37	-2940.24	95.31	40°05'41.758"N	104°44'12.021"W	0.00	
10217.00†	90.613	179.922	7360.35	3040.36	-3040.24	95.45	40°05'40.770"N	104°44'12.019"W	0.00	
10317.00†	90.613	179.922	7359.28	3140.36	-3140.23	95.59	40°05'39.782"N	104°44'12.017"W	0.00	
10417.00†	90.613	179.922	7358.21	3240.35	-3240.22	95.72	40°05'38.794"N	104°44'12.015"W	0.00	
10517.00†	90.613	179.922	7357.14	3340.35	-3340.22	95.86	40°05'37.805"N	104°44'12.014"W	0.00	
10617.00†	90.613	179.922	7356.07	3440.34	-3440.21	96.00	40°05'36.817"N	104°44'12.012"W	0.00	
10717.00†	90.613	179.922	7355.00	3540.33	-3540.21	96.13	40°05'35.829"N	104°44'12.010"W	0.00	
10817.00†	90.613	179.922	7353.93	3640.33	-3640.20	96.27	40°05'34.841"N	104°44'12.008"W	0.00	
10917.00†	90.613	179.922	7352.86	3740.32	-3740.20	96.41	40°05'33.853"N	104°44'12.007"W	0.00	
11017.00†	90.613	179.922	7351.79	3840.32	-3840.19	96.54	40°05'32.865"N	104°44'12.005"W	0.00	
11117.00†	90.613	179.922	7350.72	3940.31	-3940.18	96.68	40°05'31.877"N	104°44'12.003"W	0.00	
11217.00†	90.613	179.922	7349.65	4040.31	-4040.18	96.82	40°05'30.888"N	104°44'12.001"W	0.00	
11317.00†	90.613	179.922	7348.58	4140.30	-4140.17	96.95	40°05'29.900"N	104°44'12.000"W	0.00	
11417.00†	90.613	179.922	7347.51	4240.29	-4240.17	97.09	40°05'28.912"N	104°44'11.998"W	0.00	
11517.00†	90.613	179.922	7346.44	4340.29	-4340.16	97.22	40°05'27.924"N	104°44'11.996"W	0.00	
11617.00†	90.613	179.922	7345.37	4440.28	-4440.15	97.36	40°05'26.936"N	104°44'11.994"W	0.00	
11717.00†	90.613	179.922	7344.30	4540.28	-4540.15	97.50	40°05'25.948"N	104°44'11.993"W	0.00	
11817.00†	90.613	179.922	7343.23	4640.27	-4640.14	97.63	40°05'24.959"N	104°44'11.991"W	0.00	
11917.00†	90.613	179.922	7342.16	4740.27	-4740.14	97.77	40°05'23.971"N	104°44'11.989"W	0.00	
12017.00†	90.613	179.922	7341.09	4840.26	-4840.13	97.91	40°05'22.983"N	104°44'11.987"W	0.00	



Planned Wellpath Report

BADDING 16N-35HZ (PERMIT REV-2) PWP

Page 5 of 7



REFERENCE WELLPATH IDENTIFICATION

Operator	KERR-MCGEE OIL & GAS ONSHORE LP	Slot	SLOT#05 BADDING 16N-35HZ (350'FSL & 600'FEL, SEC.26)
Area	COLORADO	Well	BADDING 16N-35HZ
Field	WELD COUNTY (KERR MCGEE)	Wellbore	BADDING 16N-35HZ PWB
Facility	SEC.26-T2N-R66W		

WELLPATH DATA (144 stations) † = interpolated/extrapolated station

MD [ft]	Inclination [°]	Azimuth [°]	TVD [ft]	Vert Sect [ft]	North [ft]	East [ft]	Latitude	Longitude	DLS [°/100ft]	Comments
12117.00†	90.613	179.922	7340.02	4940.25	-4940.13	98.04	40°05'21.995"N	104°44'11.986"W	0.00	
12217.00†	90.613	179.922	7338.95	5040.25	-5040.12	98.18	40°05'21.007"N	104°44'11.984"W	0.00	
12317.00†	90.613	179.922	7337.88	5140.24	-5140.11	98.32	40°05'20.019"N	104°44'11.982"W	0.00	
12417.00†	90.613	179.922	7336.81	5240.24	-5240.11	98.45	40°05'19.030"N	104°44'11.980"W	0.00	
12517.00†	90.613	179.922	7335.74	5340.23	-5340.10	98.59	40°05'18.042"N	104°44'11.979"W	0.00	
12617.00†	90.613	179.922	7334.67	5440.23	-5440.10	98.73	40°05'17.054"N	104°44'11.977"W	0.00	
12717.00†	90.613	179.922	7333.60	5540.22	-5540.09	98.86	40°05'16.066"N	104°44'11.975"W	0.00	
12817.00†	90.613	179.922	7332.53	5640.21	-5640.08	99.00	40°05'15.078"N	104°44'11.973"W	0.00	
12866.41	90.613	179.922	7332.00 ¹	5689.62	-5689.49	99.07	40°05'14.590"N	104°44'11.972"W	0.00	TOTAL DEPTH

HOLE & CASING SECTIONS -

Ref Wellbore: BADDING 16N-35HZ PWB Ref Wellpath: BADDING 16N-35HZ (PERMIT REV-2) PWP

String/Diameter	Start MD [ft]	End MD [ft]	Interval [ft]	Start TVD [ft]	End TVD [ft]	Start N/S [ft]	Start E/W [ft]	End N/S [ft]	End E/W [ft]
13.5in Open Hole	17.00	1304.00	1287.00	17.00	1304.00	0.00	0.00	0.00	0.00
9.625in Casing Surface	17.00	1304.00	1287.00	17.00	1304.00	0.00	0.00	0.00	0.00
8.75in Open Hole	1304.00	7726.05	6422.05	1304.00	7387.00	0.00	0.00	-549.43	92.05
7in Casing Intermediate	17.00	7726.05	7709.05	17.00	7387.00	0.00	0.00	-549.43	92.05
6.125in Open Hole	7726.05	12866.41	5140.36	7387.00	7332.00	-549.43	92.05	-5689.49	99.07
4.5in Casing Production	17.00	12866.41	12849.41	17.00	7332.00	0.00	0.00	-5689.49	99.07



Planned Wellpath Report

BADDING 16N-35HZ (PERMIT REV-2) PWP

Page 6 of 7



REFERENCE WELLPATH IDENTIFICATION				
Operator	KERR-MCGEE OIL & GAS ONSHORE LP	Slot	SLOT#05 BADDING 16N-35HZ (350'FSL & 600'FEL, SEC.26)	
Area	COLORADO	Well	BADDING 16N-35HZ	
Field	WELD COUNTY (KERR MCGEE)	Wellbore	BADDING 16N-35HZ PWB	
Facility	SEC.26-T2N-R66W			

TARGETS									
Name	MD [ft]	TVD [ft]	North [ft]	East [ft]	Grid East [US ft]	Grid North [US ft]	Latitude	Longitude	Shape
BADDING SECTION 26 LINES		0.00	-0.30	-104.05	3213324.01	1281285.67	40°06'10.811"N	104°44'14.586"W	polygon
BADDING SECTION 35 LINES		0.00	-0.30	-104.05	3213324.01	1281285.67	40°06'10.811"N	104°44'14.586"W	polygon
1) BADDING 16N-35HZ BHL ON PLAT REV-1 (1'FSL & 510'FEL, SEC.35)	12866.41	7332.00	-5689.49	99.07	3213576.06	1275598.68	40°05'14.590"N	104°44'11.972"W	point
BADDING 16N-35HZ LAND BOX		7400.00	0.00	0.00	3213428.05	1281286.87	40°06'10.814"N	104°44'13.247"W	polygon

SURVEY PROGRAM - Ref Wellbore: BADDING 16N-35HZ PWB					Ref Wellpath: BADDING 16N-35HZ (PERMIT REV-2) PWP				
Start MD [ft]	End MD [ft]	Positional Uncertainty Model			Log Name/Comment		Wellbore		
17.00	7726.05	NaviTrak (Standard)					BADDING 16N-35HZ PWB		
7726.05	12866.41	OnTrak (Standard)					BADDING 16N-35HZ PWB		



Planned Wellpath Report

BADDING 16N-35HZ (PERMIT REV-2) PWP

Page 7 of 7



REFERENCE WELLPATH IDENTIFICATION

Operator	KERR-MCGEE OIL & GAS ONSHORE LP	Slot	SLOT#05 BADDING 16N-35HZ (350'FSL & 600'FEL, SEC.26)
Area	COLORADO	Well	BADDING 16N-35HZ
Field	WELD COUNTY (KERR MCGEE)	Wellbore	BADDING 16N-35HZ PWB
Facility	SEC.26-T2N-R66W		

WELLPATH COMMENTS

MD [ft]	Inclination [°]	Azimuth [°]	TVD [ft]	Comment
1254.00	0.000	72.000	1254.00	FOX HILLS BASE
4302.85	0.000	179.922	4297.00	PARKMAN
4679.85	0.000	179.922	4674.00	SUSSEX
6719.92	0.000	179.922	6714.07	4 1/2" LINER TOP
7252.90	43.297	179.922	7207.00	SHARON SPRINGS
7315.30	49.538	179.922	7250.00	NIOBRARA A
7481.16	66.124	179.922	7338.00	NIOBRARA B CHALK