

KERR-MCGEE OIL & GAS ONSHORE LP

Location: COLORADO Slot: SLOT#02 BADDING 1C-26HZ (350'FSL & 678'FEL, SEC.26)
Field: WELD COUNTY (KERR MCGEE) Well: BADDING 1C-26HZ
Facility: SEC.26-T2N-R66W Wellbore: BADDING 1C-26HZ PWB

Plot reference wellpath is BADDING 1C-26HZ (PERMIT REV-1) PWP

| | |
|---------------------------------------------------------------------------------------------------------|------------------------------------------------------------------------|
| True vertical depths are referenced to Rig on SLOT#02 BADDING 1C-26HZ (350'FSL & 678'FEL, SEC.26) (RKB) | Grid System: NAD83 / Lambert Colorado SP, Northern Zone (501), US feet |
| Measured depths are referenced to Rig on SLOT#02 BADDING 1C-26HZ (350'FSL & 678'FEL, SEC.26) (RKB) | North Reference: True north |
| Rig on SLOT#02 BADDING 1C-26HZ (350'FSL & 678'FEL, SEC.26) to Mean Sea Level: 5132 feet | Scale: True distance |
| Mean Sea Level to Mud line (At Slot: SLOT#02 BADDING 1C-26HZ (350'FSL & 678'FEL, SEC.26)): 0 feet | Depths are in feet |
| Coordinates are in feet referenced to Slot | Created by: wllgk02 on 8/12/2013 |

Location Information

| Facility Name | | | Grid East (US ft) | Grid North (US ft) | Latitude | Longitude |
|---------------------------------------------------------------------------------------------------------------------------------------------|--------------|--------------|-------------------|--------------------|----------------|-----------------|
| SEC.26-T2N-R66W | | | 3213323.933 | 1281285.871 | 40°06'10.811"N | 104°44'14.587"W |
| Slot | Local N (ft) | Local E (ft) | Grid East (US ft) | Grid North (US ft) | Latitude | Longitude |
| SLOT#02 BADDING 1C-26HZ (350'FSL & 678'FEL, SEC.26) | 0.00 | 26.11 | 3213350.040 | 1281285.896 | 40°06'10.811"N | 104°44'14.251"W |
| Rig on SLOT#02 BADDING 1C-26HZ (350'FSL & 678'FEL, SEC.26) (RKB) to Mud line (At Slot: SLOT#02 BADDING 1C-26HZ (350'FSL & 678'FEL, SEC.26)) | | | | | 5132R | |
| Mean Sea Level to Mud line (At Slot: SLOT#02 BADDING 1C-26HZ (350'FSL & 678'FEL, SEC.26)) | | | | | 0R | |
| Rig on SLOT#02 BADDING 1C-26HZ (350'FSL & 678'FEL, SEC.26) (RKB) to Mean Sea Level | | | | | 5132R | |

Survey Program

| Start MD (ft) | End MD (ft) | Tool | Model | Log Name/Comment | Wellbore |
|---------------|-------------|----------|---------------------|------------------|---------------------|
| 17.00 | 7937.53 | NaviTrak | NaviTrak (Standard) | | BADDING 1C-26HZ PWB |
| 7937.53 | 12932.70 | OnTrak | OnTrak (Standard) | | BADDING 1C-26HZ PWB |

Well Profile Data

| Design Comment | MD (ft) | Inc (°) | Az (°) | TVD (ft) | Local N (ft) | Local E (ft) | DLS (°/100ft) | VS (ft) |
|-----------------------|----------|---------|---------|----------|--------------|--------------|---------------|---------|
| TIE-ON | 17.00 | 0.000 | 172.960 | 17.00 | 0.00 | 0.00 | 0.00 | 0.00 |
| BEGIN NUDGE | 1450.00 | 0.000 | 172.960 | 1450.00 | 0.00 | 0.00 | 0.00 | 0.00 |
| END NUDGE | 1950.00 | 10.000 | 172.960 | 1947.47 | -43.19 | 5.33 | 2.00 | -43.23 |
| BEGIN DROP | 4075.83 | 10.000 | 172.960 | 4041.00 | -409.56 | 50.58 | 0.00 | -409.86 |
| END DROP | 4575.83 | 0.000 | 359.655 | 4538.47 | -452.75 | 55.91 | 2.00 | -453.08 |
| KOP, BUILD @ 10°/100' | 7037.41 | 0.000 | 359.655 | 7000.05 | -452.75 | 55.91 | 0.00 | -453.08 |
| LANDING POINT | 7937.53 | 90.012 | 359.655 | 7573.00 | 120.31 | 52.46 | 10.00 | 119.99 |
| TOTAL DEPTH | 12932.70 | 90.012 | 359.655 | 7572.00 | 5115.39 | 22.36 | 0.00 | 5115.16 |

Targets

| Name | MD (ft) | TVD (ft) | Local N (ft) | Local E (ft) | Grid East (US ft) | Grid North (US ft) | Latitude | Longitude |
|---------------------------------------------------------------|----------|----------|--------------|--------------|-------------------|--------------------|----------------|-----------------|
| BADDING SECTION 26 LINES | | 0.00 | 0.00 | -26.03 | 3213324.01 | 1281285.87 | 40°06'10.811"N | 104°44'14.588"W |
| SECTION 23 LINES | | 17.00 | 9904.45 | -225.65 | 3215039.23 | 1291187.62 | 40°07'48.688"N | 104°44'17.156"W |
| BADDING 1C-26HZ BHL ON PLAT REV-1 (200'FSL & 625'FEL, SEC.23) | 12932.70 | 7572.00 | 5115.39 | 22.36 | 3213328.40 | 1286401.08 | 40°07'01.362"N | 104°44'13.967"W |
| BADDING 1C-26HZ LAND BOX | | 7600.00 | 0.00 | 0.00 | 3213350.04 | 1281285.90 | 40°06'10.811"N | 104°44'14.251"W |

True Vertical Depth (ft)

Scale 1 inch = 1000 ft

4 1/2" LINER TOP : 0.00° Inc, 6937.41ft MD, 6900.04ft TVD, -453.08ft VS
KOP, BUILD @ 10°/100' : 0.00° Inc, 7037.41ft MD, 7000.05ft TVD, -453.08ft VS
SHARON SPRINGS : 22.47° Inc, 7262.08ft MD, 7219.00ft TVD, -409.59ft VS
NIOBRARA A : 28.79° Inc, 7325.33ft MD, 7276.00ft TVD, -382.25ft VS
NIOBRARA B CHALK : 36.52° Inc, 7402.59ft MD, 7341.00ft TVD, -340.59ft VS
NIOBRARA C : 45.11° Inc, 7488.56ft MD, 7406.00ft TVD, -284.45ft VS
FORT HAYS : 72.67° Inc, 7764.13ft MD, 7547.00ft TVD, -50.77ft VS
CODELL : 82.42° Inc, 7861.64ft MD, 7568.00ft TVD, 44.32ft VS
LANDING POINT : 90.01° Inc, 7937.53ft MD, 7573.00ft TVD, 119.99ft VS
7in Casing Intermediate : 90.01° Inc, 7937.53ft MD, 7573.00ft TVD, 120.00ft VS

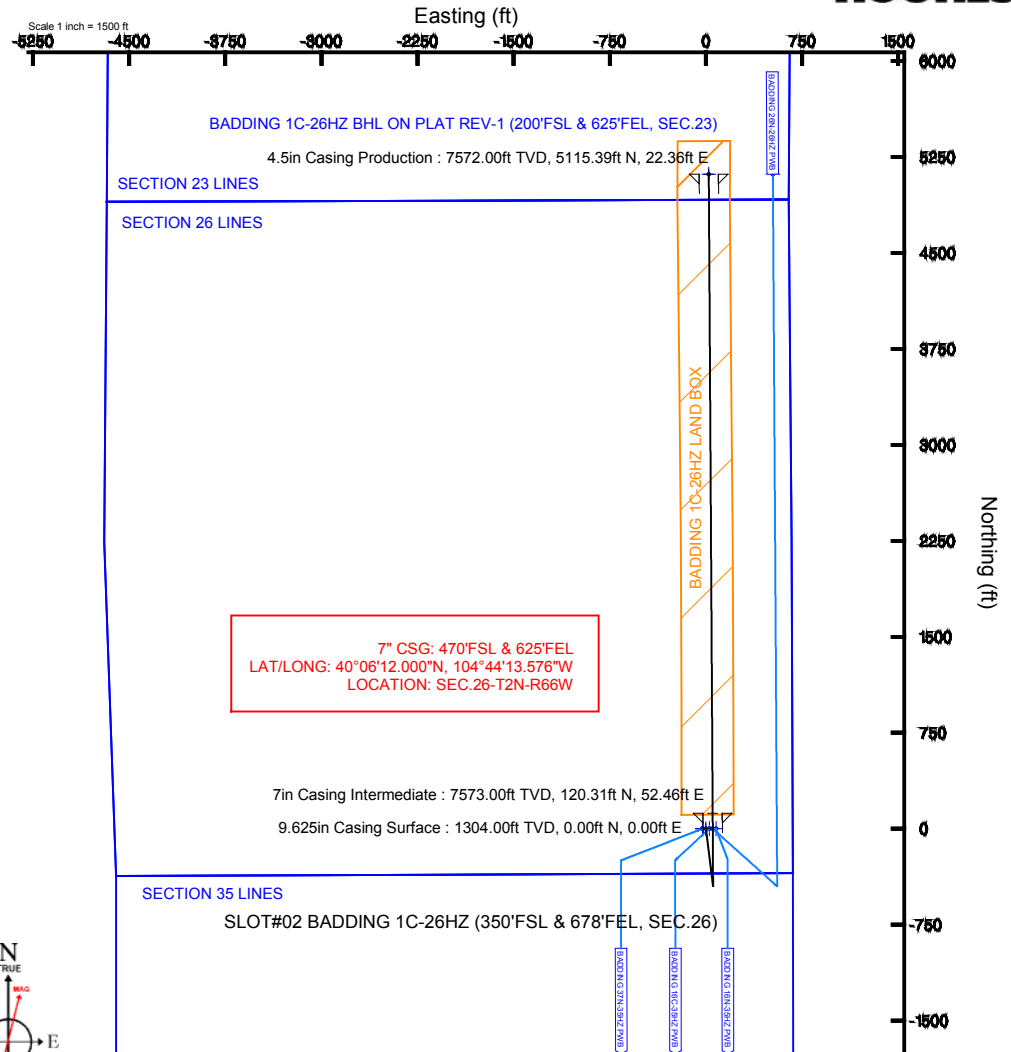


BGGM (1945.0 to 2014.0) Dip: 66.71° Field: 52684.2 nT
Magnetic North is 8.60 degrees East of True North (at 8/7/2013)

To correct azimuth from Magnetic to True add 8.60 degrees

Vertical Section (ft)

Azimuth 359.65° with reference 0.00 N, 0.00 E



7" CSG: 470'FSL & 625'FEL
LAT/LONG: 40°06'12.000"N, 104°44'13.576"W
LOCATION: SEC.26-T2N-R66W

7in Casing Intermediate : 7573.00ft TVD, 120.31ft N, 52.46ft E

9.625in Casing Surface : 1304.00ft TVD, 0.00ft N, 0.00ft E

SECTION 35 LINES

SLOT#02 BADDING 1C-26HZ (350'FSL & 678'FEL, SEC.26)

4.5in Casing Production : 90.01° Inc, 12932.70ft MD, 7572.00ft TVD, 5115.16ft VS
TOTAL DEPTH : 90.01° Inc, 12932.70ft MD, 7572.00ft TVD, 5115.16ft VS
BADDING 1C-26HZ BHL ON PLAT REV-1 (200'FSL & 625'FEL, SEC.23)

Scale 1 inch = 1000 ft



Planned Wellpath Report

BADDING 1C-26HZ (PERMIT REV-1) PWP

Page 1 of 7



REFERENCE WELLPATH IDENTIFICATION

| | | | |
|----------|---------------------------------|----------|-----------------------------------------------------|
| Operator | KERR-MCGEE OIL & GAS ONSHORE LP | Slot | SLOT#02 BADDING 1C-26HZ (350'FSL & 678'FEL, SEC.26) |
| Area | COLORADO | Well | BADDING 1C-26HZ |
| Field | WELD COUNTY (KERR MCGEE) | Wellbore | BADDING 1C-26HZ PWB |
| Facility | SEC.26-T2N-R66W | | |

REPORT SETUP INFORMATION

| | | | |
|---------------------|-----------------------------------------------------------|----------------------|-----------------------------------------|
| Projection System | NAD83 / Lambert Colorado SP, Northern Zone (501), US feet | Software System | WellArchitect® 4.0.0 |
| North Reference | True | User | Wilsjef02 |
| Scale | 0.99996 | Report Generated | 8/12/2013 at 09:39:35 |
| Convergence at slot | n/a | Database/Source file | WellArchitectDB/BADDING_1C-26HZ_PWB.xml |

WELLPATH LOCATION

| | Local coordinates | | Grid coordinates | | Geographic coordinates | |
|-----------------------|-------------------|----------|------------------|-----------------|------------------------|-----------------|
| | North[ft] | East[ft] | Easting[US ft] | Northing[US ft] | Latitude | Longitude |
| Slot Location | 0.00 | 26.11 | 3213350.04 | 1281285.90 | 40°06'10.811"N | 104°44'14.251"W |
| Facility Reference Pt | | | 3213323.93 | 1281285.67 | 40°06'10.811"N | 104°44'14.587"W |
| Field Reference Pt | | | 3197771.84 | 1268891.29 | 40°04'09.600"N | 104°47'36.000"W |

WELLPATH DATUM

| | | | |
|--------------------------|------------------------------------------------------------------|--------------------------------------------------------------------------------------------------------------------------------------------|-------------------|
| Calculation method | Minimum curvature | Rig on SLOT#02 BADDING 1C-26HZ (350'FSL & 678'FEL, SEC.26) (RKB) to Facility Vertical Datum | 5132.00ft |
| Horizontal Reference Pt | Slot | Rig on SLOT#02 BADDING 1C-26HZ (350'FSL & 678'FEL, SEC.26) (RKB) to Mean Sea Level | 5132.00ft |
| Vertical Reference Pt | Rig on SLOT#02 BADDING 1C-26HZ (350'FSL & 678'FEL, SEC.26) (RKB) | Rig on SLOT#02 BADDING 1C-26HZ (350'FSL & 678'FEL, SEC.26) (RKB) to Mud Line at Slot (SLOT#02 BADDING 1C-26HZ (350'FSL & 678'FEL, SEC.26)) | 5132.00ft |
| MD Reference Pt | Rig on SLOT#02 BADDING 1C-26HZ (350'FSL & 678'FEL, SEC.26) (RKB) | Section Origin | N 0.00, E 0.00 ft |
| Field Vertical Reference | Mean Sea Level | Section Azimuth | 359.65° |



Planned Wellpath Report

BADDING 1C-26HZ (PERMIT REV-1) PWP

Page 2 of 7



REFERENCE WELLPATH IDENTIFICATION

| | | | |
|----------|---------------------------------|----------|-----------------------------------------------------|
| Operator | KERR-MCGEE OIL & GAS ONSHORE LP | Slot | SLOT#02 BADDING 1C-26HZ (350'FSL & 678'FEL, SEC.26) |
| Area | COLORADO | Well | BADDING 1C-26HZ |
| Field | WELD COUNTY (KERR MCGEE) | Wellbore | BADDING 1C-26HZ PWB |
| Facility | SEC.26-T2N-R66W | | |

WELLPATH DATA (148 stations) † = interpolated/extrapolated station

| MD [ft] | Inclination [°] | Azimuth [°] | TVD [ft] | Vert Sect [ft] | North [ft] | East [ft] | Latitude | Longitude | DLS [°/100ft] | Comments |
|----------|-----------------|-------------|----------|----------------|------------|-----------|----------------|-----------------|---------------|----------------|
| 0.00† | 0.000 | 172.960 | 0.00 | 0.00 | 0.00 | 0.00 | 40°06'10.811"N | 104°44'14.251"W | 0.00 | |
| 17.00 | 0.000 | 172.960 | 17.00 | 0.00 | 0.00 | 0.00 | 40°06'10.811"N | 104°44'14.251"W | 0.00 | TIE-ON |
| 117.00† | 0.000 | 172.960 | 117.00 | 0.00 | 0.00 | 0.00 | 40°06'10.811"N | 104°44'14.251"W | 0.00 | |
| 217.00† | 0.000 | 172.960 | 217.00 | 0.00 | 0.00 | 0.00 | 40°06'10.811"N | 104°44'14.251"W | 0.00 | |
| 317.00† | 0.000 | 172.960 | 317.00 | 0.00 | 0.00 | 0.00 | 40°06'10.811"N | 104°44'14.251"W | 0.00 | |
| 417.00† | 0.000 | 172.960 | 417.00 | 0.00 | 0.00 | 0.00 | 40°06'10.811"N | 104°44'14.251"W | 0.00 | |
| 517.00† | 0.000 | 172.960 | 517.00 | 0.00 | 0.00 | 0.00 | 40°06'10.811"N | 104°44'14.251"W | 0.00 | |
| 617.00† | 0.000 | 172.960 | 617.00 | 0.00 | 0.00 | 0.00 | 40°06'10.811"N | 104°44'14.251"W | 0.00 | |
| 717.00† | 0.000 | 172.960 | 717.00 | 0.00 | 0.00 | 0.00 | 40°06'10.811"N | 104°44'14.251"W | 0.00 | |
| 817.00† | 0.000 | 172.960 | 817.00 | 0.00 | 0.00 | 0.00 | 40°06'10.811"N | 104°44'14.251"W | 0.00 | |
| 917.00† | 0.000 | 172.960 | 917.00 | 0.00 | 0.00 | 0.00 | 40°06'10.811"N | 104°44'14.251"W | 0.00 | |
| 1017.00† | 0.000 | 172.960 | 1017.00 | 0.00 | 0.00 | 0.00 | 40°06'10.811"N | 104°44'14.251"W | 0.00 | |
| 1117.00† | 0.000 | 172.960 | 1117.00 | 0.00 | 0.00 | 0.00 | 40°06'10.811"N | 104°44'14.251"W | 0.00 | |
| 1217.00† | 0.000 | 172.960 | 1217.00 | 0.00 | 0.00 | 0.00 | 40°06'10.811"N | 104°44'14.251"W | 0.00 | |
| 1254.00† | 0.000 | 172.960 | 1254.00 | 0.00 | 0.00 | 0.00 | 40°06'10.811"N | 104°44'14.251"W | 0.00 | FOX HILLS BASE |
| 1317.00† | 0.000 | 172.960 | 1317.00 | 0.00 | 0.00 | 0.00 | 40°06'10.811"N | 104°44'14.251"W | 0.00 | |
| 1417.00† | 0.000 | 172.960 | 1417.00 | 0.00 | 0.00 | 0.00 | 40°06'10.811"N | 104°44'14.251"W | 0.00 | |
| 1450.00 | 0.000 | 172.960 | 1450.00 | 0.00 | 0.00 | 0.00 | 40°06'10.811"N | 104°44'14.251"W | 0.00 | BEGIN NUDGE |
| 1517.00† | 1.340 | 172.960 | 1516.99 | -0.78 | -0.78 | 0.10 | 40°06'10.803"N | 104°44'14.250"W | 2.00 | |
| 1617.00† | 3.340 | 172.960 | 1616.91 | -4.83 | -4.83 | 0.60 | 40°06'10.763"N | 104°44'14.243"W | 2.00 | |
| 1717.00† | 5.340 | 172.960 | 1716.61 | -12.35 | -12.34 | 1.52 | 40°06'10.689"N | 104°44'14.231"W | 2.00 | |
| 1817.00† | 7.340 | 172.960 | 1816.00 | -23.32 | -23.30 | 2.88 | 40°06'10.581"N | 104°44'14.214"W | 2.00 | |
| 1917.00† | 9.340 | 172.960 | 1914.93 | -37.72 | -37.69 | 4.65 | 40°06'10.439"N | 104°44'14.191"W | 2.00 | |
| 1950.00 | 10.000 | 172.960 | 1947.47 | -43.23 | -43.19 | 5.33 | 40°06'10.384"N | 104°44'14.182"W | 2.00 | END NUDGE |
| 2017.00† | 10.000 | 172.960 | 2013.45 | -54.78 | -54.74 | 6.76 | 40°06'10.270"N | 104°44'14.164"W | 0.00 | |
| 2117.00† | 10.000 | 172.960 | 2111.93 | -72.03 | -71.98 | 8.89 | 40°06'10.100"N | 104°44'14.137"W | 0.00 | |
| 2217.00† | 10.000 | 172.960 | 2210.41 | -89.27 | -89.21 | 11.02 | 40°06'09.929"N | 104°44'14.109"W | 0.00 | |
| 2317.00† | 10.000 | 172.960 | 2308.89 | -106.52 | -106.44 | 13.14 | 40°06'09.759"N | 104°44'14.082"W | 0.00 | |
| 2417.00† | 10.000 | 172.960 | 2407.37 | -123.77 | -123.68 | 15.27 | 40°06'09.589"N | 104°44'14.054"W | 0.00 | |
| 2517.00† | 10.000 | 172.960 | 2505.85 | -141.01 | -140.91 | 17.40 | 40°06'09.419"N | 104°44'14.027"W | 0.00 | |
| 2617.00† | 10.000 | 172.960 | 2604.33 | -158.26 | -158.14 | 19.53 | 40°06'09.248"N | 104°44'14.000"W | 0.00 | |
| 2717.00† | 10.000 | 172.960 | 2702.81 | -175.51 | -175.38 | 21.66 | 40°06'09.078"N | 104°44'13.972"W | 0.00 | |
| 2817.00† | 10.000 | 172.960 | 2801.29 | -192.75 | -192.61 | 23.79 | 40°06'08.908"N | 104°44'13.945"W | 0.00 | |
| 2917.00† | 10.000 | 172.960 | 2899.77 | -210.00 | -209.85 | 25.91 | 40°06'08.737"N | 104°44'13.918"W | 0.00 | |
| 3017.00† | 10.000 | 172.960 | 2998.26 | -227.24 | -227.08 | 28.04 | 40°06'08.567"N | 104°44'13.890"W | 0.00 | |
| 3117.00† | 10.000 | 172.960 | 3096.74 | -244.49 | -244.31 | 30.17 | 40°06'08.397"N | 104°44'13.863"W | 0.00 | |
| 3217.00† | 10.000 | 172.960 | 3195.22 | -261.74 | -261.55 | 32.30 | 40°06'08.226"N | 104°44'13.835"W | 0.00 | |
| 3317.00† | 10.000 | 172.960 | 3293.70 | -278.98 | -278.78 | 34.43 | 40°06'08.056"N | 104°44'13.808"W | 0.00 | |
| 3417.00† | 10.000 | 172.960 | 3392.18 | -296.23 | -296.02 | 36.56 | 40°06'07.886"N | 104°44'13.781"W | 0.00 | |
| 3517.00† | 10.000 | 172.960 | 3490.66 | -313.48 | -313.25 | 38.68 | 40°06'07.715"N | 104°44'13.753"W | 0.00 | |
| 3617.00† | 10.000 | 172.960 | 3589.14 | -330.72 | -330.48 | 40.81 | 40°06'07.545"N | 104°44'13.726"W | 0.00 | |
| 3717.00† | 10.000 | 172.960 | 3687.62 | -347.97 | -347.72 | 42.94 | 40°06'07.375"N | 104°44'13.698"W | 0.00 | |
| 3817.00† | 10.000 | 172.960 | 3786.10 | -365.22 | -364.95 | 45.07 | 40°06'07.204"N | 104°44'13.671"W | 0.00 | |
| 3917.00† | 10.000 | 172.960 | 3884.58 | -382.46 | -382.19 | 47.20 | 40°06'07.034"N | 104°44'13.644"W | 0.00 | |
| 4017.00† | 10.000 | 172.960 | 3983.06 | -399.71 | -399.42 | 49.33 | 40°06'06.864"N | 104°44'13.616"W | 0.00 | |



Planned Wellpath Report

BADDING 1C-26HZ (PERMIT REV-1) PWP

Page 3 of 7



REFERENCE WELLPATH IDENTIFICATION

| | | | |
|----------|---------------------------------|----------|-----------------------------------------------------|
| Operator | KERR-MCGEE OIL & GAS ONSHORE LP | Slot | SLOT#02 BADDING 1C-26HZ (350'FSL & 678'FEL, SEC.26) |
| Area | COLORADO | Well | BADDING 1C-26HZ |
| Field | WELD COUNTY (KERR MCGEE) | Wellbore | BADDING 1C-26HZ PWB |
| Facility | SEC.26-T2N-R66W | | |

WELLPATH DATA (148 stations) † = interpolated/extrapolated station

| MD [ft] | Inclination [°] | Azimuth [°] | TVD [ft] | Vert Sect [ft] | North [ft] | East [ft] | Latitude | Longitude | DLS [°/100ft] | Comments |
|----------|-----------------|-------------|----------|----------------|------------|-----------|----------------|-----------------|---------------|-----------------------|
| 4075.83 | 10.000 | 172.960 | 4041.00 | -409.86 | -409.56 | 50.58 | 40°06'06.764"N | 104°44'13.600"W | 0.00 | BEGIN DROP |
| 4117.00† | 9.177 | 172.960 | 4081.59 | -416.67 | -416.36 | 51.42 | 40°06'06.696"N | 104°44'13.589"W | 2.00 | |
| 4217.00† | 7.177 | 172.960 | 4180.57 | -430.79 | -430.48 | 53.16 | 40°06'06.557"N | 104°44'13.567"W | 2.00 | |
| 4262.74† | 6.262 | 172.960 | 4226.00 | -436.11 | -435.79 | 53.82 | 40°06'06.504"N | 104°44'13.558"W | 2.00 | PARKMAN |
| 4317.00† | 5.177 | 172.960 | 4279.99 | -441.48 | -441.16 | 54.48 | 40°06'06.451"N | 104°44'13.550"W | 2.00 | |
| 4417.00† | 3.177 | 172.960 | 4379.72 | -448.71 | -448.38 | 55.37 | 40°06'06.380"N | 104°44'13.538"W | 2.00 | |
| 4517.00† | 1.177 | 172.960 | 4479.64 | -452.48 | -452.15 | 55.84 | 40°06'06.343"N | 104°44'13.532"W | 2.00 | |
| 4575.83 | 0.000 | 359.655 | 4538.47 | -453.08 | -452.75 | 55.91 | 40°06'06.337"N | 104°44'13.531"W | 2.00 | END DROP |
| 4617.00† | 0.000 | 359.655 | 4579.63 | -453.08 | -452.75 | 55.91 | 40°06'06.337"N | 104°44'13.531"W | 0.00 | |
| 4650.37† | 0.000 | 359.655 | 4613.00 | -453.08 | -452.75 | 55.91 | 40°06'06.337"N | 104°44'13.531"W | 0.00 | SUSSEX |
| 4717.00† | 0.000 | 359.655 | 4679.63 | -453.08 | -452.75 | 55.91 | 40°06'06.337"N | 104°44'13.531"W | 0.00 | |
| 4817.00† | 0.000 | 359.655 | 4779.63 | -453.08 | -452.75 | 55.91 | 40°06'06.337"N | 104°44'13.531"W | 0.00 | |
| 4917.00† | 0.000 | 359.655 | 4879.63 | -453.08 | -452.75 | 55.91 | 40°06'06.337"N | 104°44'13.531"W | 0.00 | |
| 5017.00† | 0.000 | 359.655 | 4979.63 | -453.08 | -452.75 | 55.91 | 40°06'06.337"N | 104°44'13.531"W | 0.00 | |
| 5117.00† | 0.000 | 359.655 | 5079.63 | -453.08 | -452.75 | 55.91 | 40°06'06.337"N | 104°44'13.531"W | 0.00 | |
| 5217.00† | 0.000 | 359.655 | 5179.63 | -453.08 | -452.75 | 55.91 | 40°06'06.337"N | 104°44'13.531"W | 0.00 | |
| 5317.00† | 0.000 | 359.655 | 5279.63 | -453.08 | -452.75 | 55.91 | 40°06'06.337"N | 104°44'13.531"W | 0.00 | |
| 5417.00† | 0.000 | 359.655 | 5379.63 | -453.08 | -452.75 | 55.91 | 40°06'06.337"N | 104°44'13.531"W | 0.00 | |
| 5517.00† | 0.000 | 359.655 | 5479.63 | -453.08 | -452.75 | 55.91 | 40°06'06.337"N | 104°44'13.531"W | 0.00 | |
| 5617.00† | 0.000 | 359.655 | 5579.63 | -453.08 | -452.75 | 55.91 | 40°06'06.337"N | 104°44'13.531"W | 0.00 | |
| 5717.00† | 0.000 | 359.655 | 5679.63 | -453.08 | -452.75 | 55.91 | 40°06'06.337"N | 104°44'13.531"W | 0.00 | |
| 5817.00† | 0.000 | 359.655 | 5779.63 | -453.08 | -452.75 | 55.91 | 40°06'06.337"N | 104°44'13.531"W | 0.00 | |
| 5917.00† | 0.000 | 359.655 | 5879.63 | -453.08 | -452.75 | 55.91 | 40°06'06.337"N | 104°44'13.531"W | 0.00 | |
| 6017.00† | 0.000 | 359.655 | 5979.63 | -453.08 | -452.75 | 55.91 | 40°06'06.337"N | 104°44'13.531"W | 0.00 | |
| 6117.00† | 0.000 | 359.655 | 6079.63 | -453.08 | -452.75 | 55.91 | 40°06'06.337"N | 104°44'13.531"W | 0.00 | |
| 6217.00† | 0.000 | 359.655 | 6179.63 | -453.08 | -452.75 | 55.91 | 40°06'06.337"N | 104°44'13.531"W | 0.00 | |
| 6317.00† | 0.000 | 359.655 | 6279.63 | -453.08 | -452.75 | 55.91 | 40°06'06.337"N | 104°44'13.531"W | 0.00 | |
| 6417.00† | 0.000 | 359.655 | 6379.63 | -453.08 | -452.75 | 55.91 | 40°06'06.337"N | 104°44'13.531"W | 0.00 | |
| 6517.00† | 0.000 | 359.655 | 6479.63 | -453.08 | -452.75 | 55.91 | 40°06'06.337"N | 104°44'13.531"W | 0.00 | |
| 6617.00† | 0.000 | 359.655 | 6579.63 | -453.08 | -452.75 | 55.91 | 40°06'06.337"N | 104°44'13.531"W | 0.00 | |
| 6717.00† | 0.000 | 359.655 | 6679.63 | -453.08 | -452.75 | 55.91 | 40°06'06.337"N | 104°44'13.531"W | 0.00 | |
| 6817.00† | 0.000 | 359.655 | 6779.63 | -453.08 | -452.75 | 55.91 | 40°06'06.337"N | 104°44'13.531"W | 0.00 | |
| 6917.00† | 0.000 | 359.655 | 6879.63 | -453.08 | -452.75 | 55.91 | 40°06'06.337"N | 104°44'13.531"W | 0.00 | |
| 6937.41† | 0.000 | 359.655 | 6900.04 | -453.08 | -452.75 | 55.91 | 40°06'06.337"N | 104°44'13.531"W | 0.00 | 4 1/2" LINER TOP |
| 7017.00† | 0.000 | 359.655 | 6979.63 | -453.08 | -452.75 | 55.91 | 40°06'06.337"N | 104°44'13.531"W | 0.00 | |
| 7037.41 | 0.000 | 359.655 | 7000.05 | -453.08 | -452.75 | 55.91 | 40°06'06.337"N | 104°44'13.531"W | 0.00 | KOP, BUILD @ 10°/100' |
| 7117.00† | 7.959 | 359.655 | 7079.38 | -447.56 | -447.23 | 55.88 | 40°06'06.391"N | 104°44'13.532"W | 10.00 | |
| 7217.00† | 17.959 | 359.655 | 7176.71 | -425.17 | -424.84 | 55.74 | 40°06'06.613"N | 104°44'13.534"W | 10.00 | |
| 7262.08† | 22.467 | 359.655 | 7219.00 | -409.59 | -409.27 | 55.65 | 40°06'06.767"N | 104°44'13.535"W | 10.00 | SHARON SPRINGS |
| 7317.00† | 27.959 | 359.655 | 7268.67 | -386.21 | -385.88 | 55.51 | 40°06'06.998"N | 104°44'13.537"W | 10.00 | |
| 7325.33† | 28.792 | 359.655 | 7276.00 | -382.25 | -381.92 | 55.49 | 40°06'07.037"N | 104°44'13.537"W | 10.00 | NIOBRARA A |
| 7402.59† | 36.518 | 359.655 | 7341.00 | -340.59 | -340.26 | 55.23 | 40°06'07.448"N | 104°44'13.540"W | 10.00 | NIOBRARA B CHALK |
| 7417.00† | 37.959 | 359.655 | 7352.47 | -331.87 | -331.55 | 55.18 | 40°06'07.535"N | 104°44'13.541"W | 10.00 | |
| 7488.56† | 45.115 | 359.655 | 7406.00 | -284.45 | -284.13 | 54.90 | 40°06'08.003"N | 104°44'13.545"W | 10.00 | NIOBRARA C |
| 7517.00† | 47.959 | 359.655 | 7425.56 | -263.81 | -263.49 | 54.77 | 40°06'08.207"N | 104°44'13.546"W | 10.00 | |



Planned Wellpath Report

BADDING 1C-26HZ (PERMIT REV-1) PWP

Page 4 of 7



REFERENCE WELLPATH IDENTIFICATION

| | | | |
|----------|---------------------------------|----------|-----------------------------------------------------|
| Operator | KERR-MCGEE OIL & GAS ONSHORE LP | Slot | SLOT#02 BADDING 1C-26HZ (350'FSL & 678'FEL, SEC.26) |
| Area | COLORADO | Well | BADDING 1C-26HZ |
| Field | WELD COUNTY (KERR MCGEE) | Wellbore | BADDING 1C-26HZ PWB |
| Facility | SEC.26-T2N-R66W | | |

WELLPATH DATA (148 stations) † = interpolated/extrapolated station

| MD [ft] | Inclination [°] | Azimuth [°] | TVD [ft] | Vert Sect [ft] | North [ft] | East [ft] | Latitude | Longitude | DLS [°/100ft] | Comments |
|-----------|-----------------|-------------|----------|----------------|------------|-----------|----------------|-----------------|---------------|---------------|
| 7617.00† | 57.959 | 359.655 | 7485.72 | -184.09 | -183.77 | 54.29 | 40°06'08.995"N | 104°44'13.552"W | 10.00 | |
| 7717.00† | 67.959 | 359.655 | 7531.13 | -95.14 | -94.82 | 53.76 | 40°06'09.874"N | 104°44'13.559"W | 10.00 | |
| 7764.13† | 72.672 | 359.655 | 7547.00 | -50.77 | -50.45 | 53.49 | 40°06'10.312"N | 104°44'13.563"W | 10.00 | FORT HAYS |
| 7817.00† | 77.959 | 359.655 | 7560.40 | 0.35 | 0.67 | 53.18 | 40°06'10.818"N | 104°44'13.567"W | 10.00 | |
| 7861.64† | 82.423 | 359.655 | 7568.00 | 44.32 | 44.64 | 52.91 | 40°06'11.252"N | 104°44'13.570"W | 10.00 | CODELL |
| 7917.00† | 87.959 | 359.655 | 7572.64 | 99.47 | 99.79 | 52.58 | 40°06'11.797"N | 104°44'13.574"W | 10.00 | |
| 7937.53 | 90.012 | 359.655 | 7573.00 | 119.99 | 120.31 | 52.46 | 40°06'12.000"N | 104°44'13.576"W | 10.00 | LANDING POINT |
| 8017.00† | 90.012 | 359.655 | 7572.99 | 199.47 | 199.78 | 51.98 | 40°06'12.785"N | 104°44'13.582"W | 0.00 | |
| 8117.00† | 90.012 | 359.655 | 7572.97 | 299.47 | 299.78 | 51.38 | 40°06'13.773"N | 104°44'13.590"W | 0.00 | |
| 8217.00† | 90.012 | 359.655 | 7572.95 | 399.47 | 399.78 | 50.77 | 40°06'14.762"N | 104°44'13.598"W | 0.00 | |
| 8317.00† | 90.012 | 359.655 | 7572.93 | 499.47 | 499.78 | 50.17 | 40°06'15.750"N | 104°44'13.605"W | 0.00 | |
| 8417.00† | 90.012 | 359.655 | 7572.91 | 599.47 | 599.78 | 49.57 | 40°06'16.738"N | 104°44'13.613"W | 0.00 | |
| 8517.00† | 90.012 | 359.655 | 7572.89 | 699.47 | 699.77 | 48.97 | 40°06'17.726"N | 104°44'13.621"W | 0.00 | |
| 8617.00† | 90.012 | 359.655 | 7572.87 | 799.47 | 799.77 | 48.36 | 40°06'18.714"N | 104°44'13.629"W | 0.00 | |
| 8717.00† | 90.012 | 359.655 | 7572.85 | 899.47 | 899.77 | 47.76 | 40°06'19.703"N | 104°44'13.636"W | 0.00 | |
| 8817.00† | 90.012 | 359.655 | 7572.83 | 999.47 | 999.77 | 47.16 | 40°06'20.691"N | 104°44'13.644"W | 0.00 | |
| 8917.00† | 90.012 | 359.655 | 7572.81 | 1099.47 | 1099.77 | 46.56 | 40°06'21.679"N | 104°44'13.652"W | 0.00 | |
| 9017.00† | 90.012 | 359.655 | 7572.79 | 1199.47 | 1199.76 | 45.95 | 40°06'22.667"N | 104°44'13.660"W | 0.00 | |
| 9117.00† | 90.012 | 359.655 | 7572.77 | 1299.47 | 1299.76 | 45.35 | 40°06'23.655"N | 104°44'13.667"W | 0.00 | |
| 9217.00† | 90.012 | 359.655 | 7572.75 | 1399.47 | 1399.76 | 44.75 | 40°06'24.644"N | 104°44'13.675"W | 0.00 | |
| 9317.00† | 90.012 | 359.655 | 7572.73 | 1499.47 | 1499.76 | 44.15 | 40°06'25.632"N | 104°44'13.683"W | 0.00 | |
| 9417.00† | 90.012 | 359.655 | 7572.71 | 1599.47 | 1599.76 | 43.54 | 40°06'26.620"N | 104°44'13.691"W | 0.00 | |
| 9517.00† | 90.012 | 359.655 | 7572.69 | 1699.47 | 1699.76 | 42.94 | 40°06'27.608"N | 104°44'13.698"W | 0.00 | |
| 9617.00† | 90.012 | 359.655 | 7572.67 | 1799.47 | 1799.75 | 42.34 | 40°06'28.596"N | 104°44'13.706"W | 0.00 | |
| 9717.00† | 90.012 | 359.655 | 7572.65 | 1899.47 | 1899.75 | 41.74 | 40°06'29.585"N | 104°44'13.714"W | 0.00 | |
| 9817.00† | 90.012 | 359.655 | 7572.63 | 1999.47 | 1999.75 | 41.13 | 40°06'30.573"N | 104°44'13.722"W | 0.00 | |
| 9917.00† | 90.012 | 359.655 | 7572.61 | 2099.47 | 2099.75 | 40.53 | 40°06'31.561"N | 104°44'13.729"W | 0.00 | |
| 10017.00† | 90.012 | 359.655 | 7572.59 | 2199.47 | 2199.75 | 39.93 | 40°06'32.549"N | 104°44'13.737"W | 0.00 | |
| 10117.00† | 90.012 | 359.655 | 7572.57 | 2299.47 | 2299.74 | 39.33 | 40°06'33.537"N | 104°44'13.745"W | 0.00 | |
| 10217.00† | 90.012 | 359.655 | 7572.55 | 2399.47 | 2399.74 | 38.72 | 40°06'34.526"N | 104°44'13.753"W | 0.00 | |
| 10317.00† | 90.012 | 359.655 | 7572.53 | 2499.47 | 2499.74 | 38.12 | 40°06'35.514"N | 104°44'13.760"W | 0.00 | |
| 10417.00† | 90.012 | 359.655 | 7572.51 | 2599.47 | 2599.74 | 37.52 | 40°06'36.502"N | 104°44'13.768"W | 0.00 | |
| 10517.00† | 90.012 | 359.655 | 7572.49 | 2699.47 | 2699.74 | 36.92 | 40°06'37.490"N | 104°44'13.776"W | 0.00 | |
| 10617.00† | 90.012 | 359.655 | 7572.47 | 2799.47 | 2799.74 | 36.31 | 40°06'38.478"N | 104°44'13.784"W | 0.00 | |
| 10717.00† | 90.012 | 359.655 | 7572.44 | 2899.47 | 2899.73 | 35.71 | 40°06'39.467"N | 104°44'13.791"W | 0.00 | |
| 10817.00† | 90.012 | 359.655 | 7572.42 | 2999.47 | 2999.73 | 35.11 | 40°06'40.455"N | 104°44'13.799"W | 0.00 | |
| 10917.00† | 90.012 | 359.655 | 7572.40 | 3099.47 | 3099.73 | 34.51 | 40°06'41.443"N | 104°44'13.807"W | 0.00 | |
| 11017.00† | 90.012 | 359.655 | 7572.38 | 3199.47 | 3199.73 | 33.90 | 40°06'42.431"N | 104°44'13.815"W | 0.00 | |
| 11117.00† | 90.012 | 359.655 | 7572.36 | 3299.47 | 3299.73 | 33.30 | 40°06'43.419"N | 104°44'13.822"W | 0.00 | |
| 11217.00† | 90.012 | 359.655 | 7572.34 | 3399.47 | 3399.72 | 32.70 | 40°06'44.408"N | 104°44'13.830"W | 0.00 | |
| 11317.00† | 90.012 | 359.655 | 7572.32 | 3499.47 | 3499.72 | 32.09 | 40°06'45.396"N | 104°44'13.838"W | 0.00 | |
| 11417.00† | 90.012 | 359.655 | 7572.30 | 3599.47 | 3599.72 | 31.49 | 40°06'46.384"N | 104°44'13.846"W | 0.00 | |
| 11517.00† | 90.012 | 359.655 | 7572.28 | 3699.47 | 3699.72 | 30.89 | 40°06'47.372"N | 104°44'13.853"W | 0.00 | |
| 11617.00† | 90.012 | 359.655 | 7572.26 | 3799.47 | 3799.72 | 30.29 | 40°06'48.360"N | 104°44'13.861"W | 0.00 | |
| 11717.00† | 90.012 | 359.655 | 7572.24 | 3899.47 | 3899.72 | 29.68 | 40°06'49.349"N | 104°44'13.869"W | 0.00 | |



Planned Wellpath Report

BADDING 1C-26HZ (PERMIT REV-1) PWP

Page 5 of 7



REFERENCE WELLPATH IDENTIFICATION

| | | | |
|----------|---------------------------------|----------|-----------------------------------------------------|
| Operator | KERR-MCGEE OIL & GAS ONSHORE LP | Slot | SLOT#02 BADDING 1C-26HZ (350'FSL & 678'FEL, SEC.26) |
| Area | COLORADO | Well | BADDING 1C-26HZ |
| Field | WELD COUNTY (KERR MCGEE) | Wellbore | BADDING 1C-26HZ PWB |
| Facility | SEC.26-T2N-R66W | | |

WELLPATH DATA (148 stations) † = interpolated/extrapolated station

| MD [ft] | Inclination [°] | Azimuth [°] | TVD [ft] | Vert Sect [ft] | North [ft] | East [ft] | Latitude | Longitude | DLS [°/100ft] | Comments |
|-----------|-----------------|-------------|----------------------|----------------|------------|-----------|----------------|-----------------|---------------|-------------|
| 11817.00† | 90.012 | 359.655 | 7572.22 | 3999.47 | 3999.71 | 29.08 | 40°06'50.337"N | 104°44'13.877"W | 0.00 | |
| 11917.00† | 90.012 | 359.655 | 7572.20 | 4099.47 | 4099.71 | 28.48 | 40°06'51.325"N | 104°44'13.884"W | 0.00 | |
| 12017.00† | 90.012 | 359.655 | 7572.18 | 4199.47 | 4199.71 | 27.88 | 40°06'52.313"N | 104°44'13.892"W | 0.00 | |
| 12117.00† | 90.012 | 359.655 | 7572.16 | 4299.47 | 4299.71 | 27.27 | 40°06'53.301"N | 104°44'13.900"W | 0.00 | |
| 12217.00† | 90.012 | 359.655 | 7572.14 | 4399.47 | 4399.71 | 26.67 | 40°06'54.290"N | 104°44'13.908"W | 0.00 | |
| 12317.00† | 90.012 | 359.655 | 7572.12 | 4499.47 | 4499.70 | 26.07 | 40°06'55.278"N | 104°44'13.915"W | 0.00 | |
| 12417.00† | 90.012 | 359.655 | 7572.10 | 4599.47 | 4599.70 | 25.47 | 40°06'56.266"N | 104°44'13.923"W | 0.00 | |
| 12517.00† | 90.012 | 359.655 | 7572.08 | 4699.47 | 4699.70 | 24.86 | 40°06'57.254"N | 104°44'13.931"W | 0.00 | |
| 12617.00† | 90.012 | 359.655 | 7572.06 | 4799.47 | 4799.70 | 24.26 | 40°06'58.242"N | 104°44'13.939"W | 0.00 | |
| 12717.00† | 90.012 | 359.655 | 7572.04 | 4899.47 | 4899.70 | 23.66 | 40°06'59.230"N | 104°44'13.946"W | 0.00 | |
| 12817.00† | 90.012 | 359.655 | 7572.02 | 4999.47 | 4999.70 | 23.06 | 40°07'00.219"N | 104°44'13.954"W | 0.00 | |
| 12917.00† | 90.012 | 359.655 | 7572.00 | 5099.47 | 5099.69 | 22.45 | 40°07'01.207"N | 104°44'13.962"W | 0.00 | |
| 12932.70 | 90.012 | 359.655 | 7572.00 ¹ | 5115.16 | 5115.39 | 22.36 | 40°07'01.362"N | 104°44'13.963"W | 0.00 | TOTAL DEPTH |

HOLE & CASING SECTIONS - Ref Wellbore: BADDING 1C-26HZ PWB Ref Wellpath: BADDING 1C-26HZ (PERMIT REV-1) PWP

| String/Diameter | Start MD [ft] | End MD [ft] | Interval [ft] | Start TVD [ft] | End TVD [ft] | Start N/S [ft] | Start E/W [ft] | End N/S [ft] | End E/W [ft] |
|-------------------------|---------------|-------------|---------------|----------------|--------------|----------------|----------------|--------------|--------------|
| 13.5in Open Hole | 17.00 | 1304.00 | 1287.00 | 17.00 | 1304.00 | 0.00 | 0.00 | 0.00 | 0.00 |
| 9.625in Casing Surface | 17.00 | 1304.00 | 1287.00 | 17.00 | 1304.00 | 0.00 | 0.00 | 0.00 | 0.00 |
| 8.75in Open Hole | 1304.00 | 7937.53 | 6633.53 | 1304.00 | 7573.00 | 0.00 | 0.00 | 120.31 | 52.46 |
| 7in Casing Intermediate | 17.00 | 7937.53 | 7920.53 | 17.00 | 7573.00 | 0.00 | 0.00 | 120.31 | 52.46 |
| 6.125in Open Hole | 7937.53 | 12932.70 | 4995.17 | 7573.00 | 7572.00 | 120.31 | 52.46 | 5115.39 | 22.36 |
| 4.5in Casing Production | 17.00 | 12932.70 | 12915.70 | 17.00 | 7572.00 | 0.00 | 0.00 | 5115.39 | 22.36 |



Planned Wellpath Report

BADDING 1C-26HZ (PERMIT REV-1) PWP

Page 6 of 7



REFERENCE WELLPATH IDENTIFICATION

| | | | |
|----------|---------------------------------|----------|-----------------------------------------------------|
| Operator | KERR-MCGEE OIL & GAS ONSHORE LP | Slot | SLOT#02 BADDING 1C-26HZ (350'FSL & 678'FEL, SEC.26) |
| Area | COLORADO | Well | BADDING 1C-26HZ |
| Field | WELD COUNTY (KERR MCGEE) | Wellbore | BADDING 1C-26HZ PWB |
| Facility | SEC.26-T2N-R66W | | |

TARGETS

| Name | MD [ft] | TVD [ft] | North [ft] | East [ft] | Grid East [US ft] | Grid North [US ft] | Latitude | Longitude | Shape |
|------------------------------------------------------------------------|------------|-------------|---------------|--------------|----------------------|-----------------------|----------------|-----------------|---------|
| BADDING SECTION 26 LINES | | 0.00 | 0.00 | -26.03 | 3213324.01 | 1281285.67 | 40°06'10.811"N | 104°44'14.586"W | polygon |
| SECTION 23 LINES | | 17.00 | 9904.45 | -225.65 | 3213039.23 | 1291187.62 | 40°07'48.688"N | 104°44'17.156"W | polygon |
| 1) BADDING 1C-26HZ BHL ON PLAT REV-1 (200'FSL & 625'FEL, SEC.23) | 12932.70 | 7572.00 | 5115.39 | 22.36 | 3213328.40 | 1286401.08 | 40°07'01.362"N | 104°44'13.963"W | point |
| BADDING 1C-26HZ LAND BOX | | 7600.00 | 0.00 | 0.00 | 3213350.04 | 1281285.90 | 40°06'10.811"N | 104°44'14.251"W | polygon |

SURVEY PROGRAM - Ref Wellbore: BADDING 1C-26HZ PWB Ref Wellpath: BADDING 1C-26HZ (PERMIT REV-1) PWP

| Start MD [ft] | End MD [ft] | Positional Uncertainty Model | Log Name/Comment | Wellbore |
|------------------|----------------|------------------------------|------------------|---------------------|
| 17.00 | 7937.53 | NaviTrak (Standard) | | BADDING 1C-26HZ PWB |
| 7937.53 | 12932.70 | OnTrak (Standard) | | BADDING 1C-26HZ PWB |



Planned Wellpath Report

BADDING 1C-26HZ (PERMIT REV-1) PWP

Page 7 of 7



REFERENCE WELLPATH IDENTIFICATION

| | | | |
|----------|---------------------------------|----------|-----------------------------------------------------|
| Operator | KERR-MCGEE OIL & GAS ONSHORE LP | Slot | SLOT#02 BADDING 1C-26HZ (350'FSL & 678'FEL, SEC.26) |
| Area | COLORADO | Well | BADDING 1C-26HZ |
| Field | WELD COUNTY (KERR MCGEE) | Wellbore | BADDING 1C-26HZ PWB |
| Facility | SEC.26-T2N-R66W | | |

WELLPATH COMMENTS

| MD [ft] | Inclination [°] | Azimuth [°] | TVD [ft] | Comment |
|------------|--------------------|----------------|-------------|------------------|
| 1254.00 | 0.000 | 172.960 | 1254.00 | FOX HILLS BASE |
| 4262.74 | 6.262 | 172.960 | 4226.00 | PARKMAN |
| 4650.37 | 0.000 | 359.655 | 4613.00 | SUSSEX |
| 6937.41 | 0.000 | 359.655 | 6900.04 | 4 1/2" LINER TOP |
| 7262.08 | 22.467 | 359.655 | 7219.00 | SHARON SPRINGS |
| 7325.33 | 28.792 | 359.655 | 7276.00 | NIOBRARA A |
| 7402.59 | 36.518 | 359.655 | 7341.00 | NIOBRARA B CHALK |
| 7488.56 | 45.115 | 359.655 | 7406.00 | NIOBRARA C |
| 7764.13 | 72.672 | 359.655 | 7547.00 | FORT HAYS |
| 7861.64 | 82.423 | 359.655 | 7568.00 | CODELL |