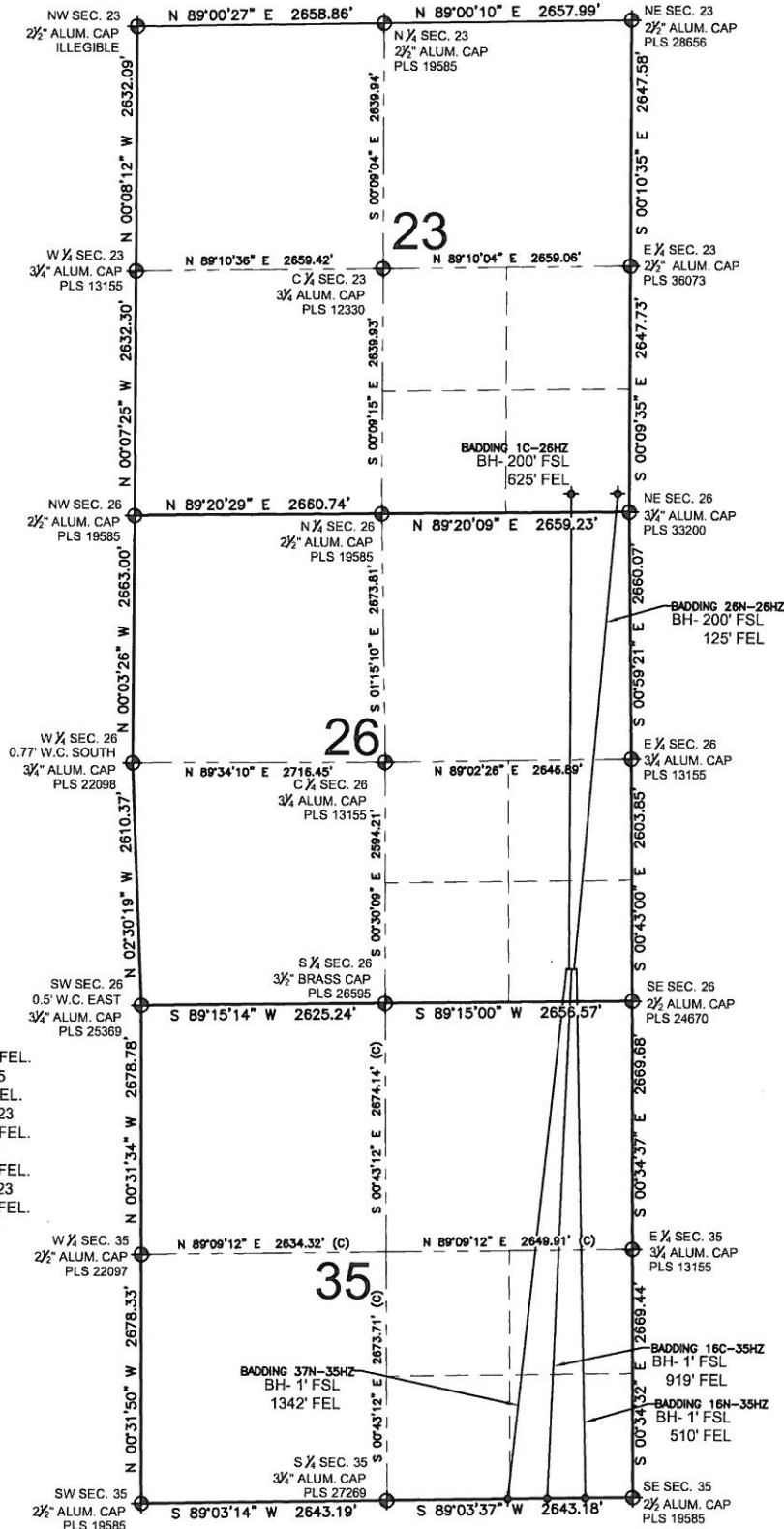


# BADDING 16C-35HZ MULTI-WELL PLAN

SECTION 26, TOWNSHIP 2 NORTH, RANGE 66 WEST, 6TH P.M.



## NOTES:

BADDING 37N-35HZ TO BE AT 350' FSL, 704' FEL.  
BOTTOM HOLE AT 1' FSL & 1342' FEL, SEC 35  
BADDING 1C-26HZ TO BE AT 350' FSL, 678' FEL.  
BOTTOM HOLE AT 200' FSL & 625' FEL, SEC 23  
BADDING 16C-35HZ TO BE AT 350' FSL, 652' FEL.  
BOTTOM HOLE AT 1' FSL & 919' FEL, SEC 35  
BADDING 26N-26HZ TO BE AT 350' FSL, 626' FEL.  
BOTTOM HOLE AT 200' FSL & 125' FEL, SEC 23  
BADDING 16N-35HZ TO BE AT 350' FSL, 600' FEL.  
BOTTOM HOLE AT 1' FSL & 510' FEL, SEC 35

## LEGEND

- ◻ = EXISTING MONUMENT
- = PROPOSED WELL
- ◆ = BOTTOM HOLE
- ◆ = EXISTING WELL
- BH = BOTTOM HOLE

PREPARED BY:

**PFS**



Petroleum Field Services, LLC  
1801 W. 13th Ave.  
Denver, CO 80204

KERR-MCGEE OIL & GAS ONSHORE LP

FIELD DATE:

04-30-13

DRAWING DATE:

07-29-13

SURFACE LOCATION:

SE 1/4 SE 1/4, SEC. 26, T2N, R66W, 6TH P.M.

WELD COUNTY, COLORADO

