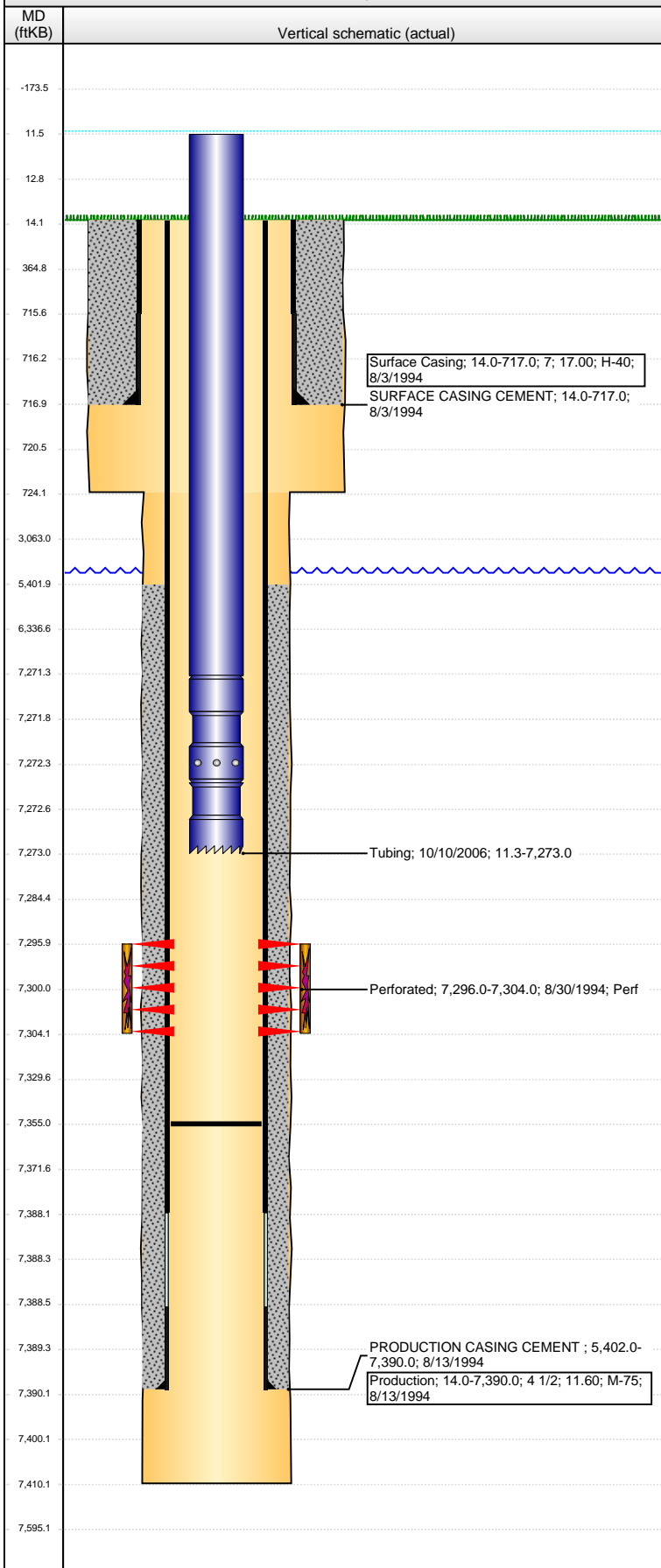


Well Name: UPV 05-07K3

VERTICAL - ORIGINAL HOLE, 9/6/2013 7:30:06 AM



Well Header

API	Business Unit	District	Well Config
05-123-18352	WATTENBERG	15	VERTICAL
Original KB Elevation (ft)	KB - GL / MSL (ftKB)	Spud Date	P & A Date
4,841.00	14.00	8/2/1994	
Comment			

Directions To Well

Congressional Location

Quarter 1	Quarter 2	Quarter 3	Quarter 4	Section	Township	Twonshp N...	Range	Rng E/W Dir
		SW	NE	5	2	N	63	W

Bottom Hole Location

North-South Distance (ft)	From N or S Line	East-West Distance (ft)	From E or W Line

Plug Back Total Depths

Date	Depth (ftKB)	Method	Com
8/13/1994	7,360.0	CASING TALLY	DEPTH LOGGER ON CBL MOST RECENT CLEANOUT
8/30/1994	7,367.0	CASED HOLE LOG	
10/9/2006	7,355.0	TAG	

Wellbore Sections

Section Des	Size (in)	Act Top (ftKB)	Act Btm (ftKB)
SURFACE	11	14.0	724.0
PRODUCTION	6 1/4	724.0	7,410.0

Zone Statuses

Zone Name	Status Date	Status	Job
J SAND	10/31/1994	PR	DRILLING/COMPLETION - ORIGINAL, 8/2/1994 00:00

Casing Strings

Surface Casing, 717.0ftKB

Casing Description	Run Date	OD (in)	Wt/Len (l...)	Grade	Top (ftKB)	MD (ftKB)
Surface Casing	8/3/1994	7	17.00	H-40	14.0	717.0

Production, 7,390.0ftKB

Casing Description	Run Date	OD (in)	Wt/Len (l...)	Grade	Top (ftKB)	MD (ftKB)
Production	8/13/1994	4 1/2	11.60	M-75	14.0	7,390.0

Cement

Description	Top Depth (ftKB)	Bottom Depth (ftKB)
SURFACE CASING CEMENT	14.0	717.0
Description	Top Depth (ftKB)	Bottom Depth (ftKB)
PRODUCTION CASING CEMENT	5,402.0	7,390.0

Tubing Components

Item Des	OD (in)	Wt (lb/ft)	Grade	Jts	Len (ft)	Btm (ftKB)	Btm (TVD) (ftKB)
Tubing	2 3/8	4.70	J-55	231	7,260.00	7,271.4	
Seal Nipple	2 3/8			1	1.10	7,272.5	
Notched collar	2 3/8			1	0.55	7,273.0	

Perforation Data

Zone	Bnch/St g	Entered Shot Total	Top (ftKB)	Btm (ftKB)	Date
J SAND, ORIGINAL HOLE		33	7,296.00	7,304.00	8/30/1994

Stimulations & Treatments

Date	Zone	Primary Job Type
9/2/1994	J SAND, ORIGINAL HOLE	DRILLING/COMPLETION - ORIGINAL
Technical Result	Tech Result Details	Tech Result Note
Comment		

Other In Hole

Run Date	Des	OD (in)	Top (ftKB)	Btm (ftKB)

Logs

Date	Type	Top (ftKB)	Btm (ftKB)
8/9/1994	HYDROCARBON ANALYSIS	7,130.0	7,350.0
8/11/1994	COMPENSATED NEUTRON	4,000.0	7,399.0
8/11/1994	GAMMA RAY	4,000.0	7,375.0
8/11/1994	INDUCTION	0.0	7,375.0
8/30/1994	CBL/CCL/GR	5,270.0	7,362.0