



Scale: 9.60" / 100'
Measured Depth Log

Well Name GP#12(L2)(M-13)

Location Goodman Point, Colorado

State CO

County Montezuma

Country US

Rig Number M-13

API Number 050830663404

Region Goodman Point

Field McElmo Dome

Spud Date May 6, 2013 (2nd lateral)

Drilling Completed May 25, 2013

Surface Coordinates Sec 6, TWN 36N, RNG 17W
793 FNL, 250 FEL

Bottom Hole Coordinates 2209 FSL, 1662 FEL, 315 Azimuth from SHL

Ground Elevation 6860

K.B. Elevation 6880

Logged Interval 7890 **To** 9860

Total Depth TVD 8000'

Formation Leadville

Type of Drilling Fluid Mud

Operator

Company KINDER MORGAN

Geologist

Name Steven Moran

Company Above Enterprise

Other

Chromatograph (Yellow Box) 530

Rock Types

UNKNOWN	ANHYDRITE	DOLOMITE	SHALE GRAY	TILL
GYPSUM	SALT	CHERT	SHALE COLORED	BENTONITE
SIDERITE or LIMONITE	LIMESTONE	COAL	SILTSTONE	TUFF
		MARLSTONE	SANDSTONE	IGNEOUS
		CLAYSTONE	CONGLOMERATE	METAMORPHIC
		SHALE	BRECCIA	

Accessories

Fossils

ALGAE
AMPHIPORA
BELEMNITE
BIOCLASTIC
BRACHIOPOD
BRYOZOA
CEPHALOPOD
CORAL
CRINOID
ECHINOID
FISH
FORAMINIFERA

Fossil

GASTROPOD
OOLITE
OSTRACOD
PELECYPOD
PELLET
PISOLITE
PLANT REMAINS
PLANT SPORES
SCAPHOPOD
STROMATOPOROID

Minerals

ANHYDRITIC

Argillaceous

ARGILLITE GRAIN
BENTONITE
BITUMENOUS SUBSTANCE
BRECCIA FRAGMENTS
CALCAREOUS
CARBONACEOUS FLAKES
CHTDK
CHTLT
COAL - THIN BEDS
DOLOMITIC
FELDSPAR
FERRUGINOUS PELLET
FERRUGINOUS

Glaucconite

GYPSIFEROUS
HEAVY MINERAL
KAOLIN
MARLSTONE
MINERAL CRYSTALS
NODULES
PHOSPHATE PELLETS
PYRITE
SALT CAST
SANDY
SILICEOUS
SILTY
TUFFACEOUS

Stringer

ANHYDRITE STRINGER
BENTONITE STRINGER
COAL STRINGER
DOLOMITE STRINGER
GYPSUM STRINGER
LIMESTONE STRINGER
MARLSTONE (CALC) STRG
MARLSTONE (DOL) STRG
SANDSTONE STRINGER
SHALE STRINGER
SILTSTONE STRINGER

Other Symbols

Oil Show

DEAD
EVEN
QUESTIONABLE
SPOTTED STAINING

Porosity

E EARTHY
F FENESTRAL
F FRACTURE
X INTERCRYSTALLINE
O INTEROOLITIC

Moldic

O ORGANIC
P PINPOINT
V VUGGY

Engineering

BIT
CONNECTION (LEFT)
CONNECTION (RIGHT)
CONNECTION GAS
CORE - LOST
CORE - RECOVERED
DST INTERVAL

Fault

FORMATION TOP
GAS SHOW
MN DEPTH
NORMAL FAULT
OIL SHOW
OVERTURNED STRATA
REVERSE FAULT
SIDEWALL CORE (LEFT)
SIDEWALL CORE (RIGHT)
SLIDE
SURVEY
TRIP GAS

Wireline Tested - Left

WIRELINE TESTED - RT

Rounding

A ANGULAR
R ROUNDED
S SUBANG
SUBRND

Textures

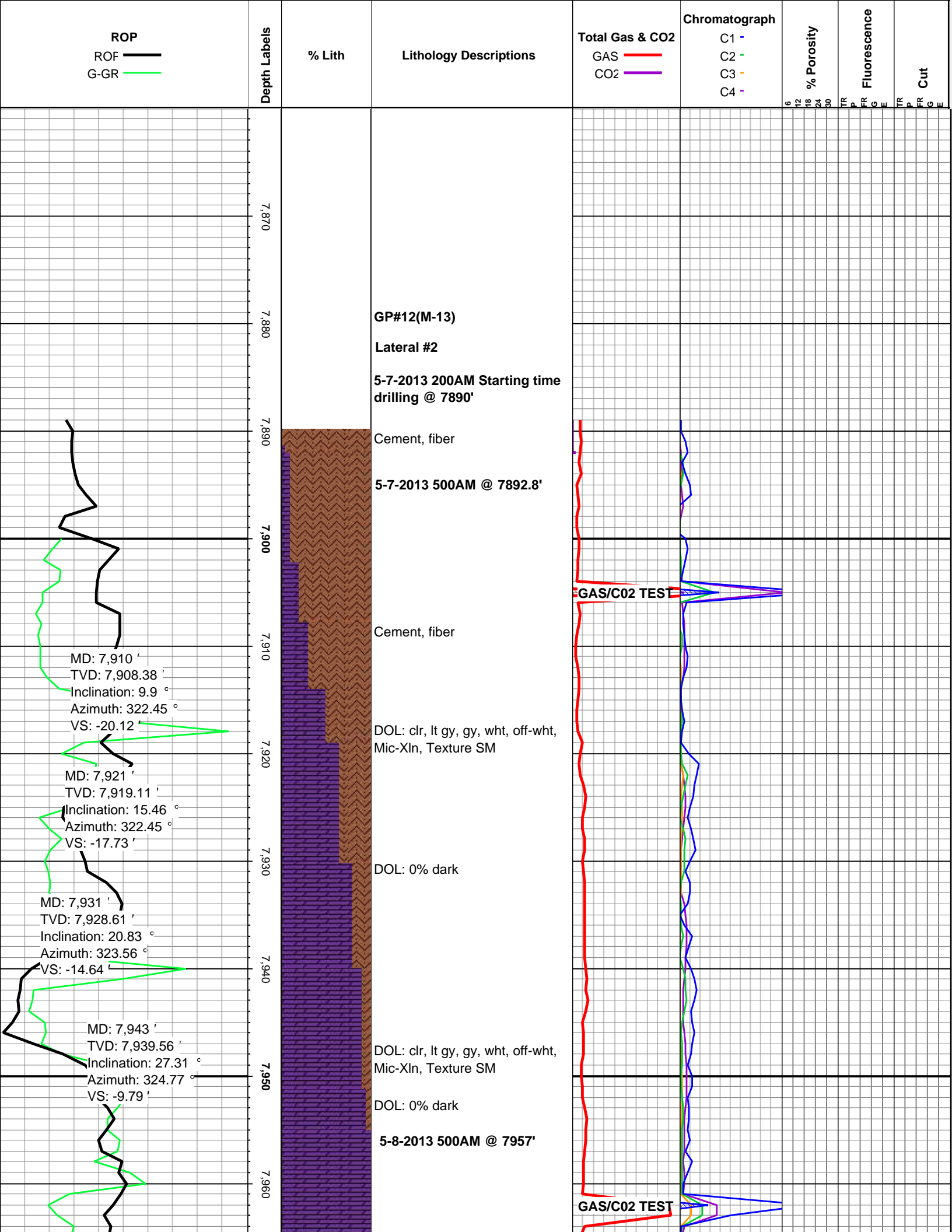
B BOUNDSTONE
C CHALKY
C CRYPTOXLN

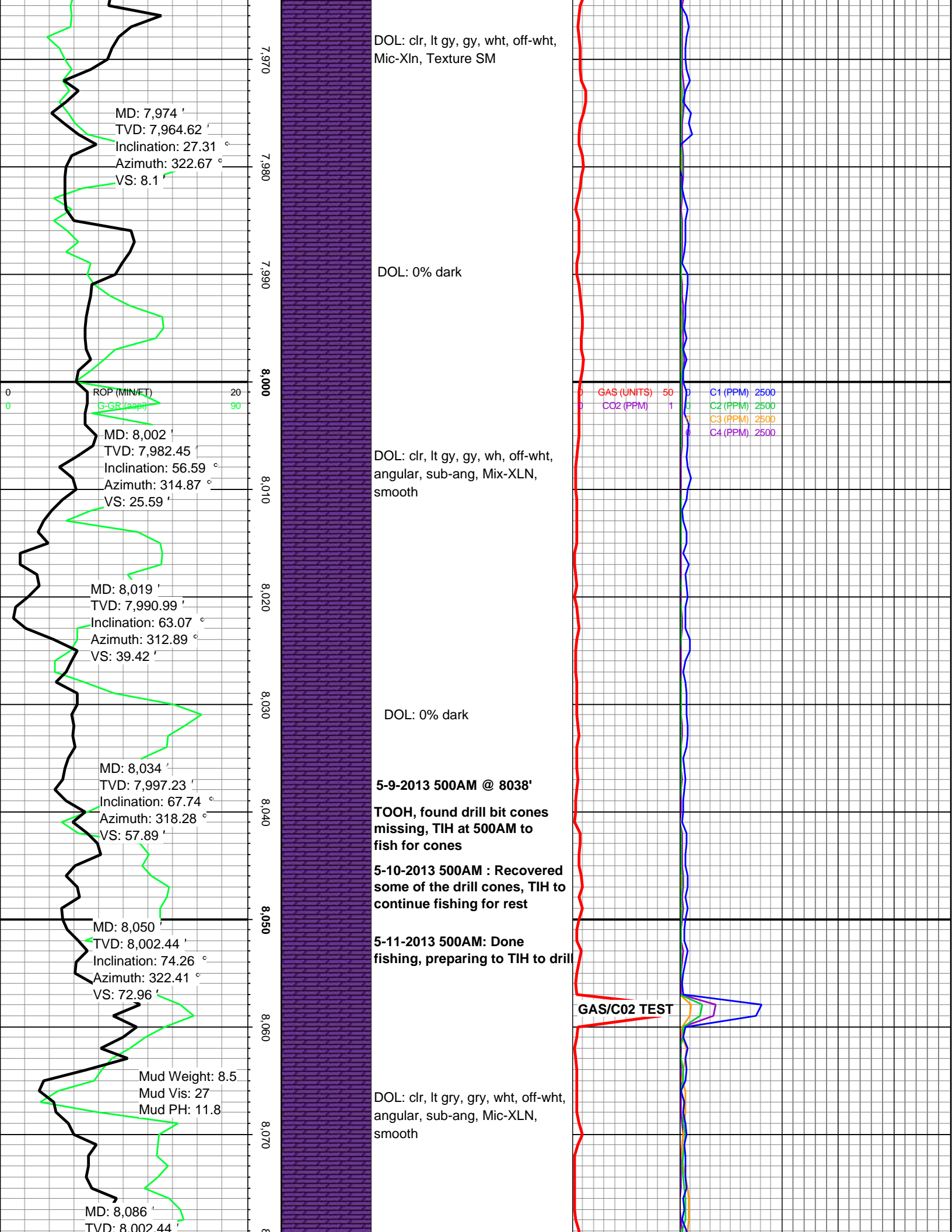
E Earthy

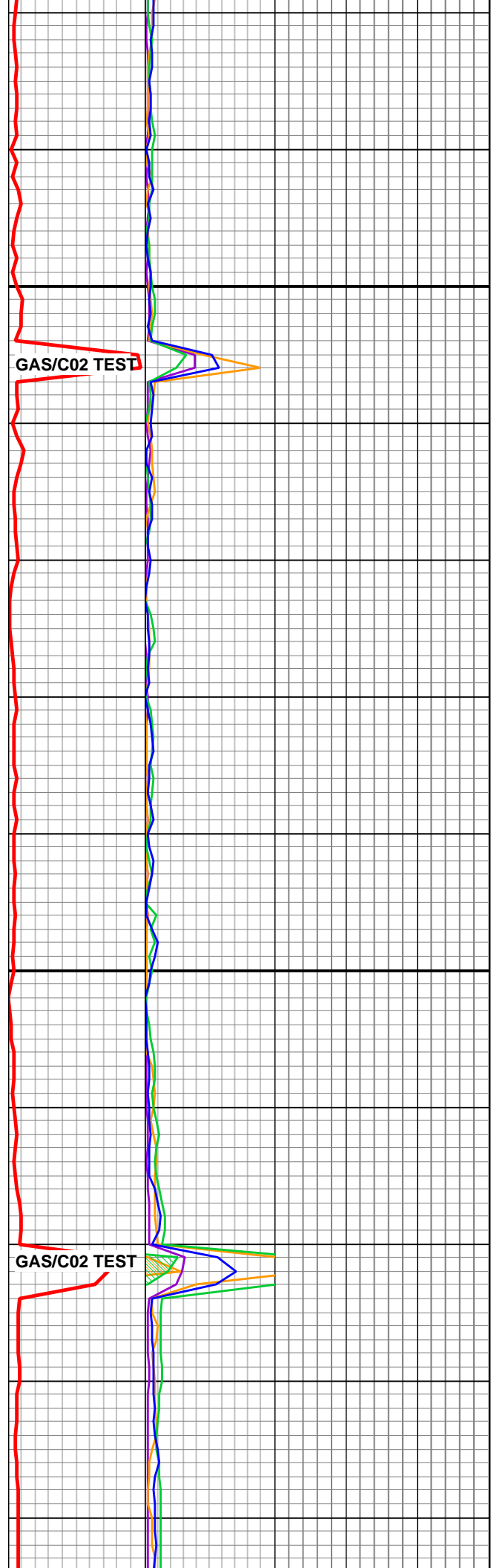
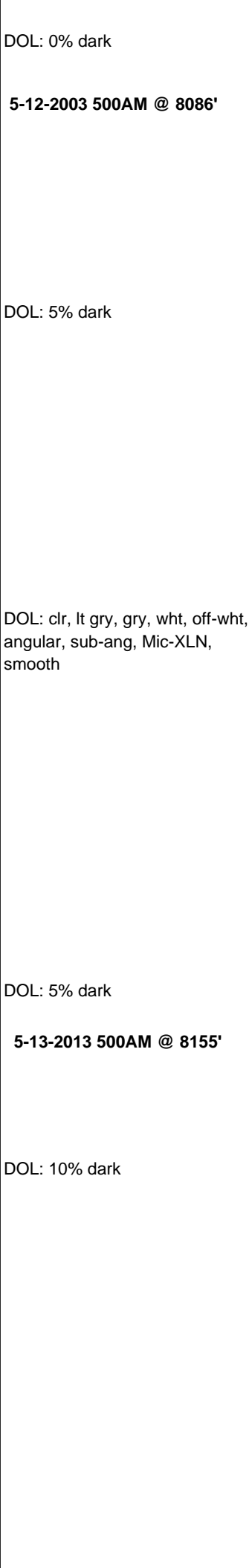
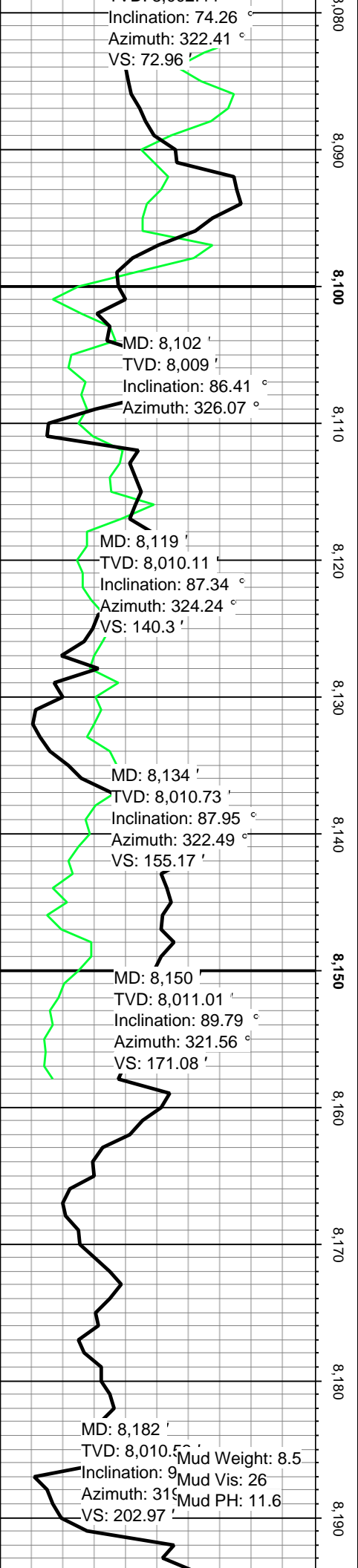
F FINELYXLN
G GRAINSTONE
L LITHOGRAPHIC
M MICROXLN
M MUDSTONE
P PACKSTONE
W WACKESTONE

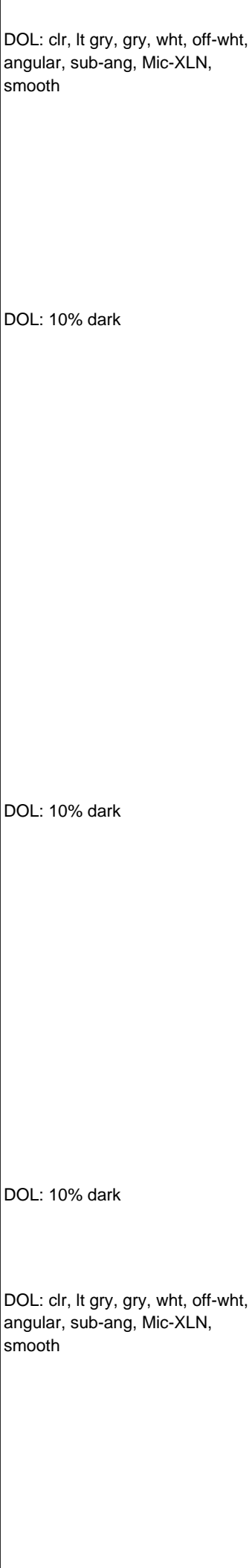
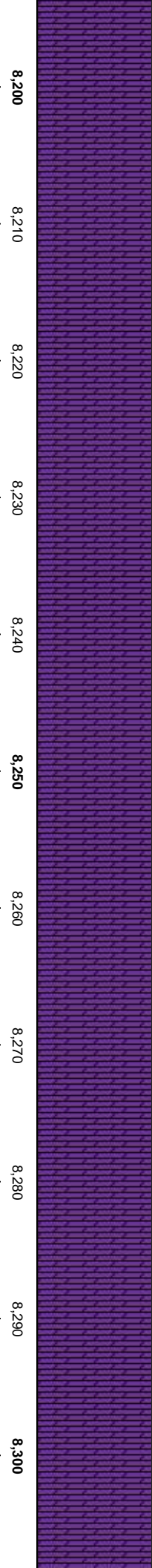
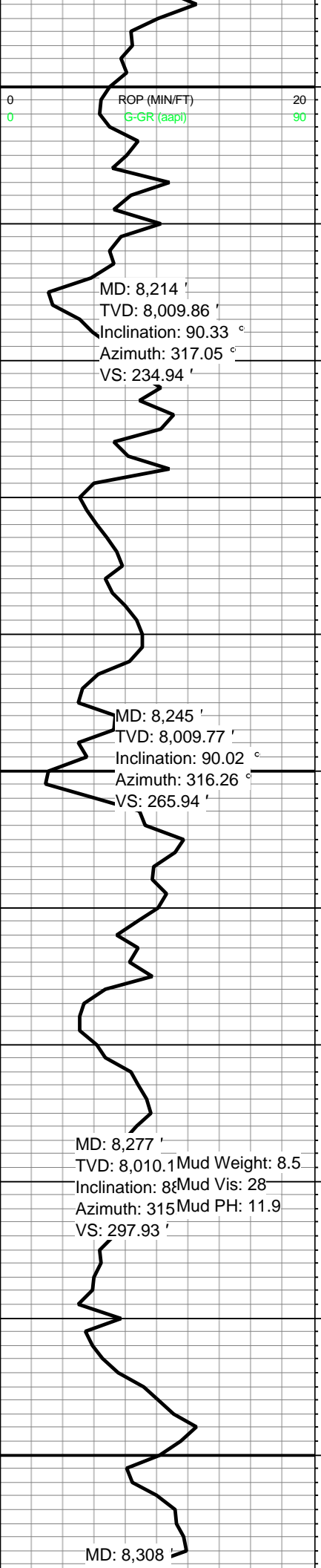
Sorting

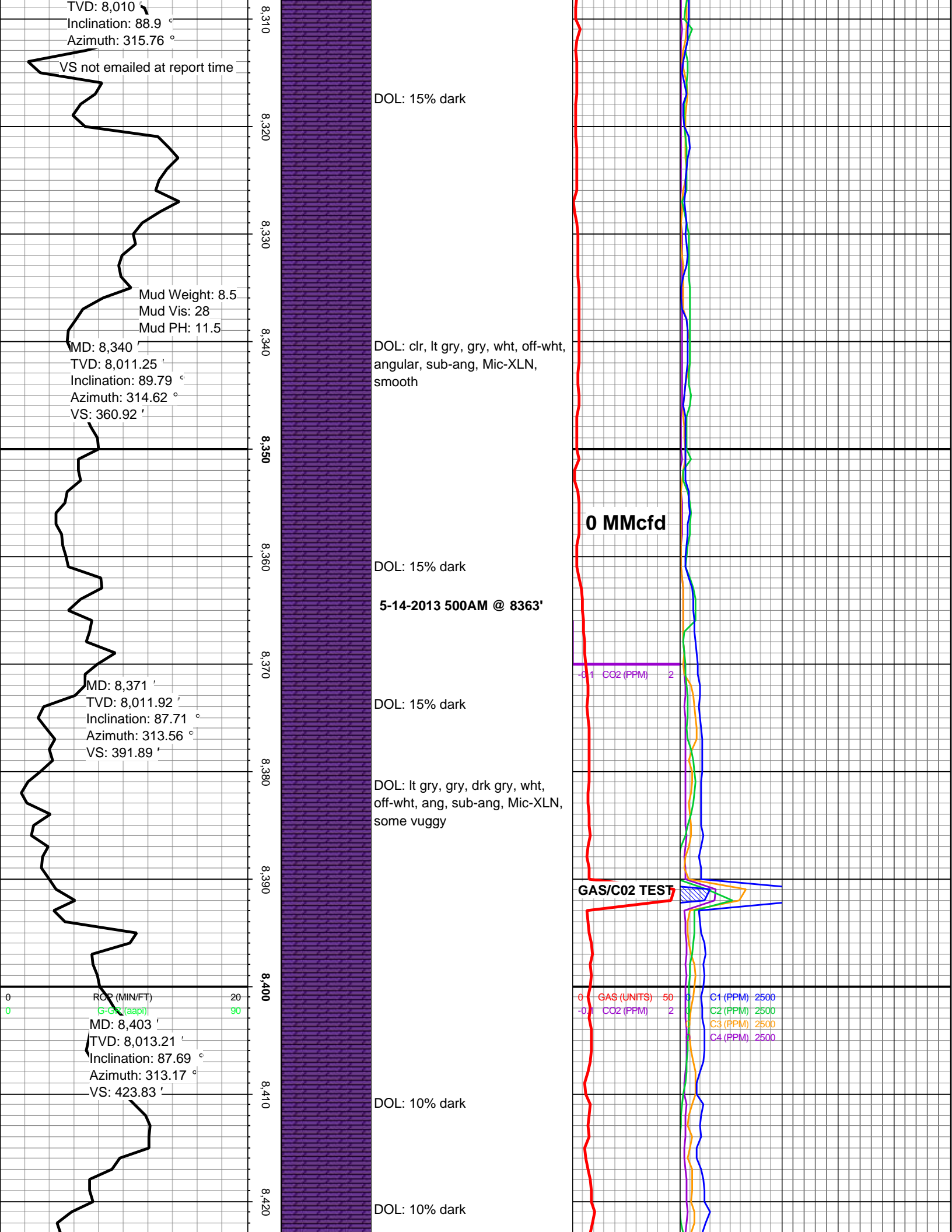
M MODERATE
P POOR
W WELL

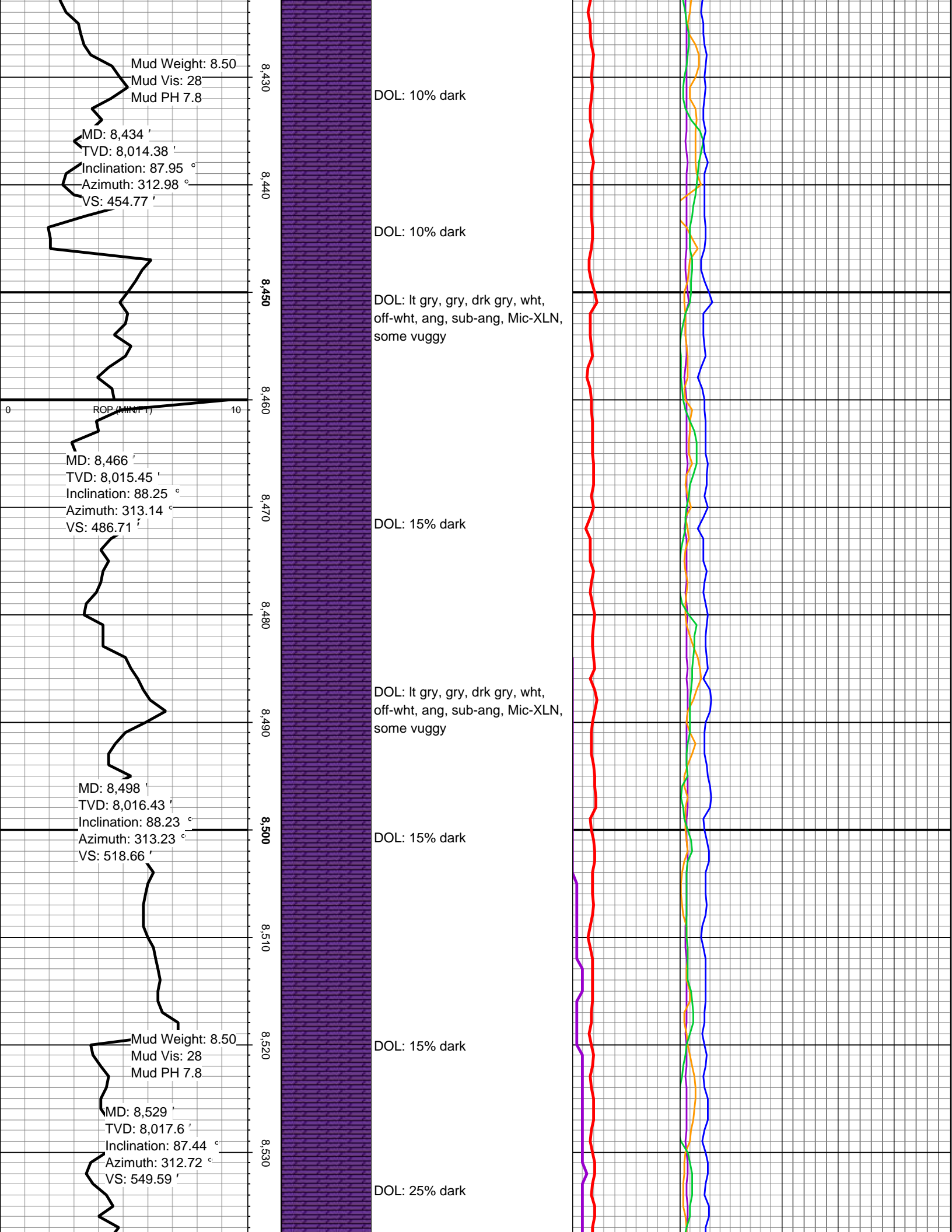


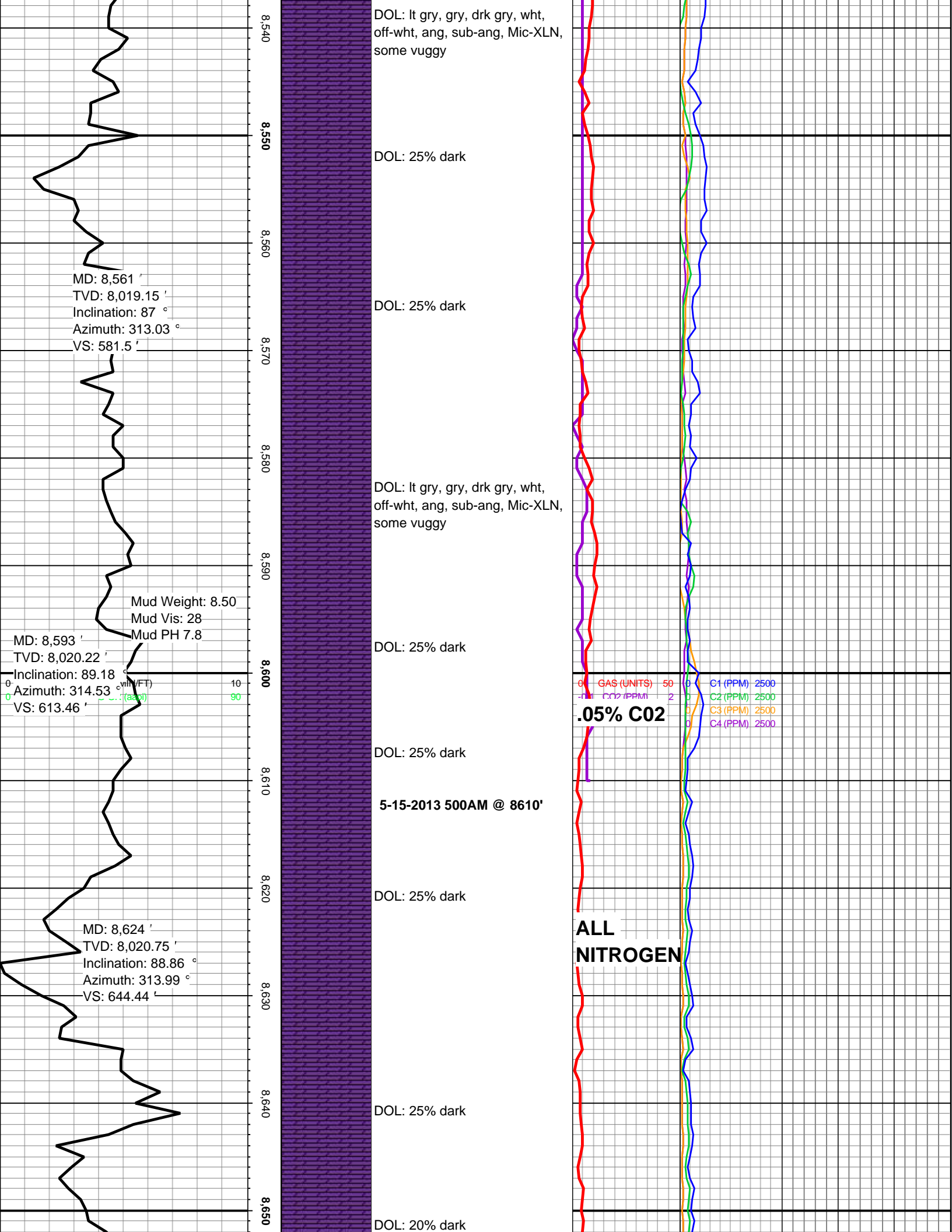


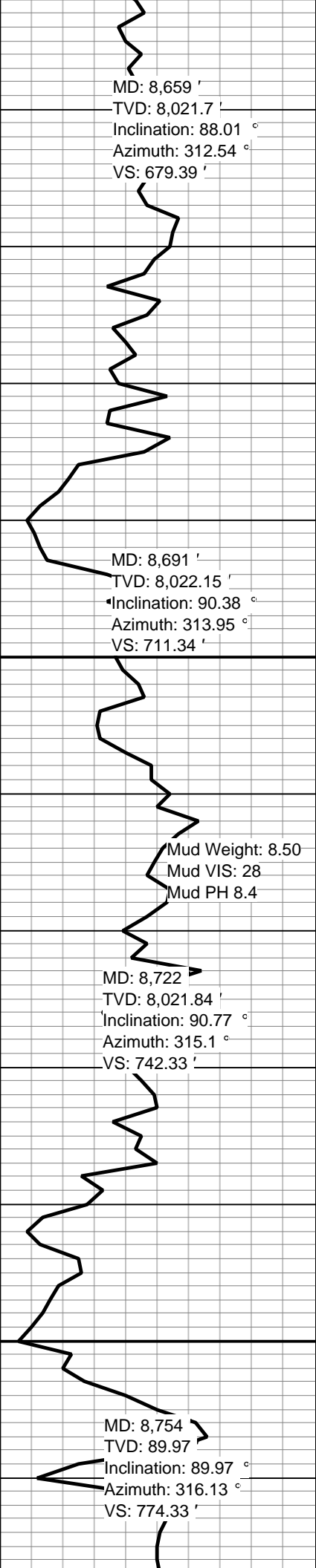












8,660
8,670
8,680
8,690
8,700
8,710
8,720
8,730
8,740
8,750
8,760

DOL: lt gry, gry, drk gry, wht,
off-wht, ang, sub-ang, Mic-XLN,
some vuggy

DOL: 20% dark

5-16-2013 500AM @ 8671'

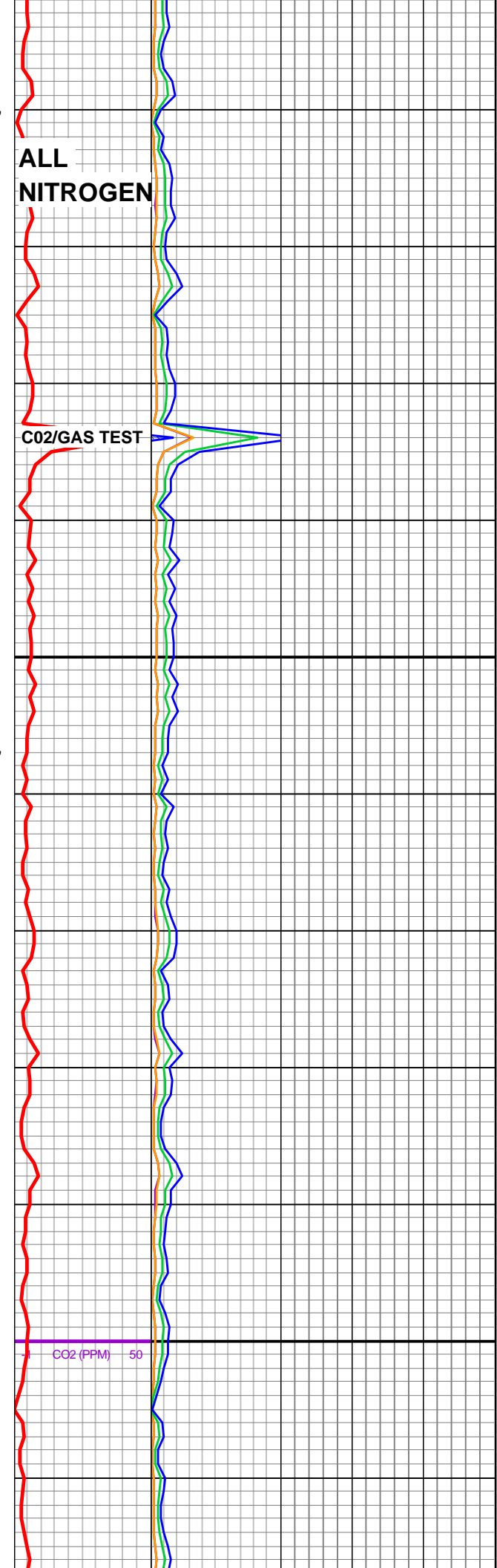
DOL: 20% dark

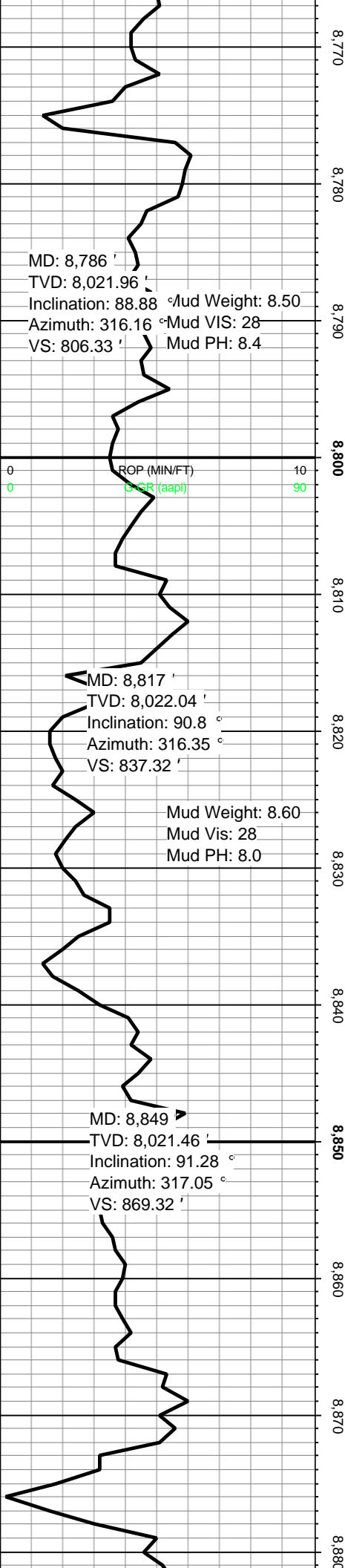
DOL: lt gry, gry, drk gry, wht,
off-wht, ang, sub-ang, Mic-XLN,
some vuggy

DOL: 20% dark

DOL: 20% dark

DOL: 15% dark





DOL: lt gry, gry, drk gry, wht,
off-wht, sub-ang, Mic-XLN

DOL: 15% dark

DOL: 15% dark

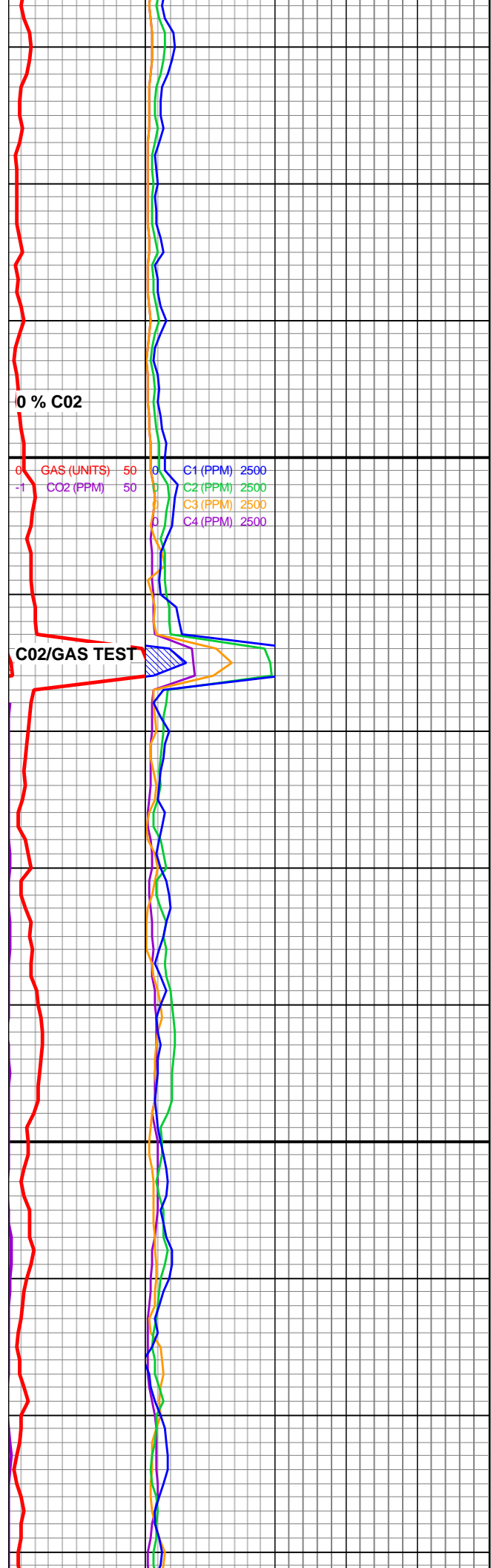
5-17-2013 500AM @ 8803'

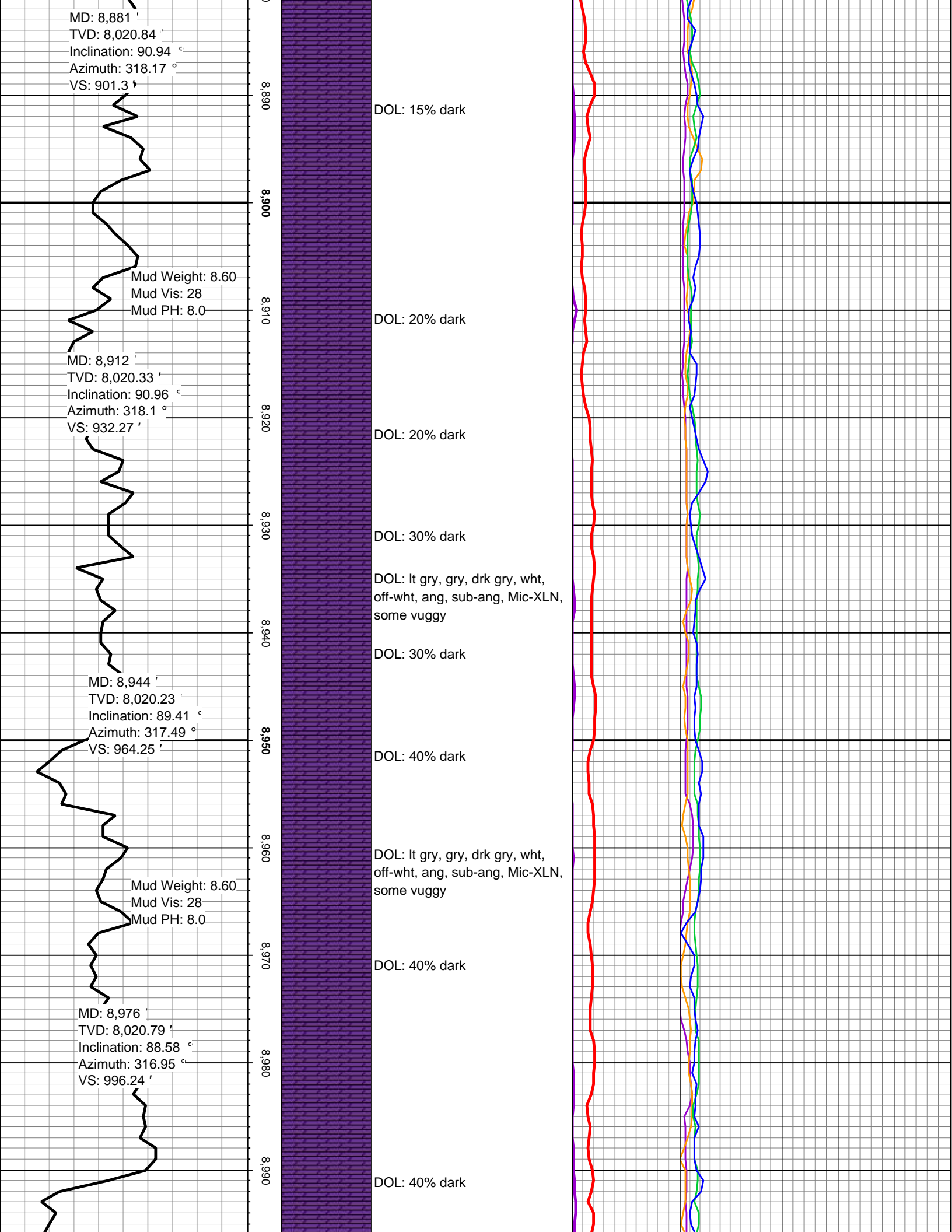
DOL: 15% dark

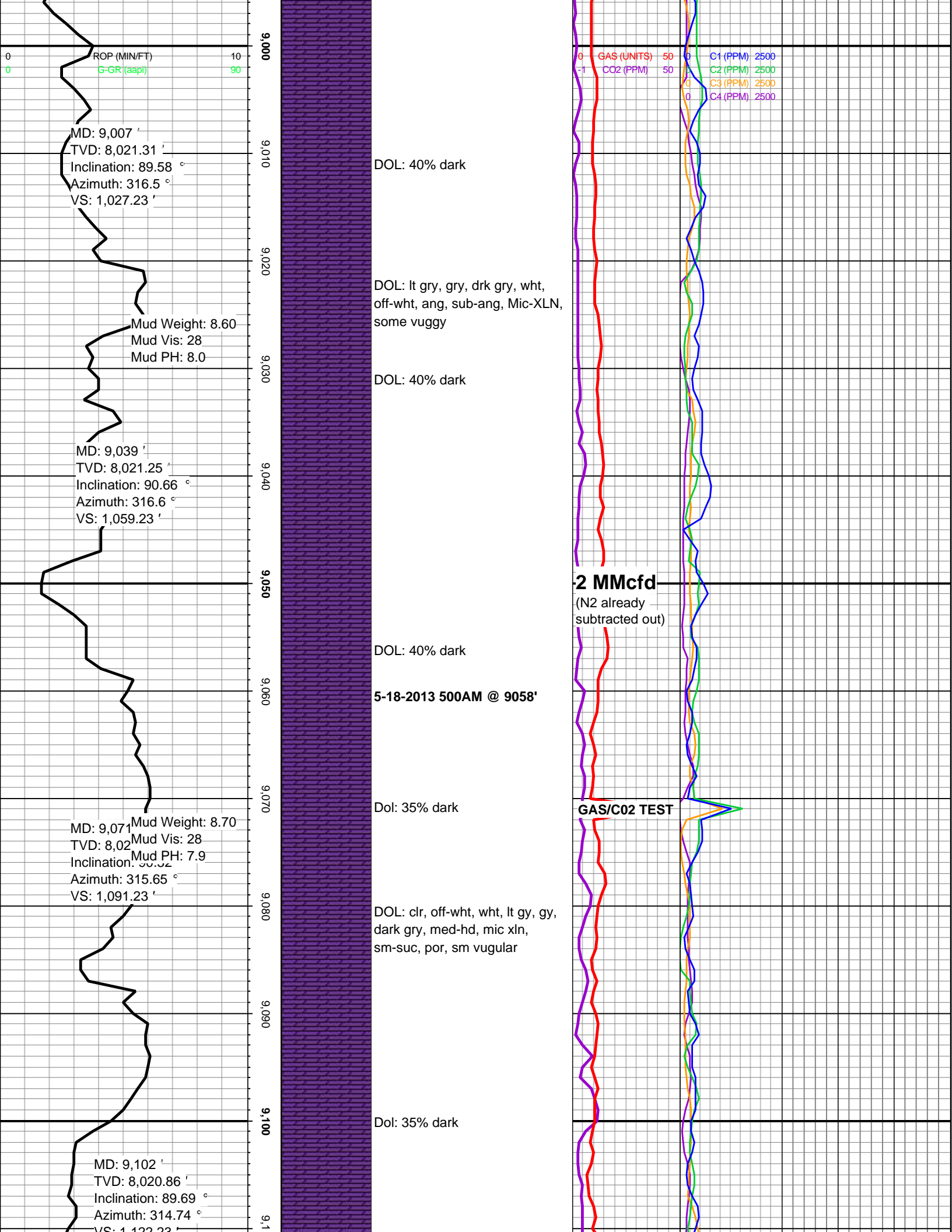
DOL: lt gry, gry, drk gry, wht,
off-wht, sub-ang, Mic-XLN

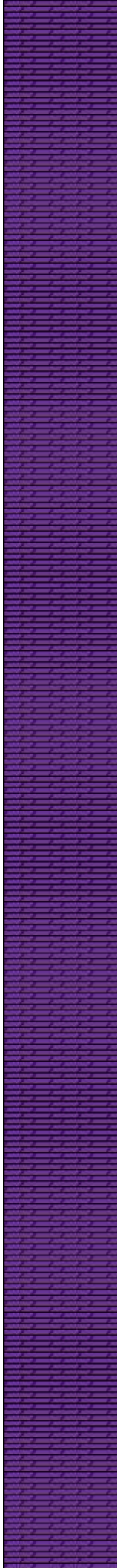
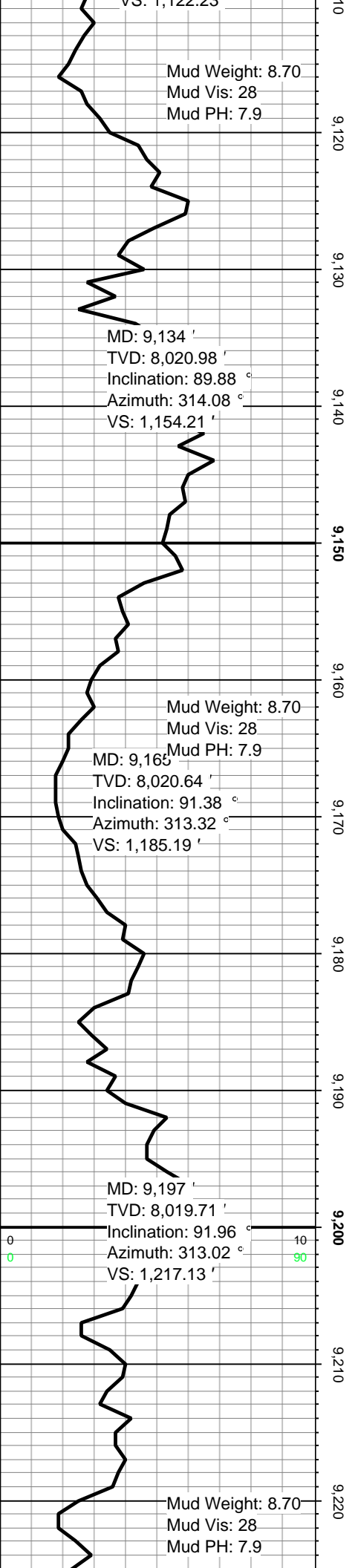
DOL: 15% dark

DOL: lt gry, gry, drk gry, wht,
off-wht, sub-ang, Mic-XLN









DOL: clr, off-wht, wht, lt gy, gy,
dark gry, med-hd, mic xln,
sm-suc, por, sm vugular

Dol: 35% dark

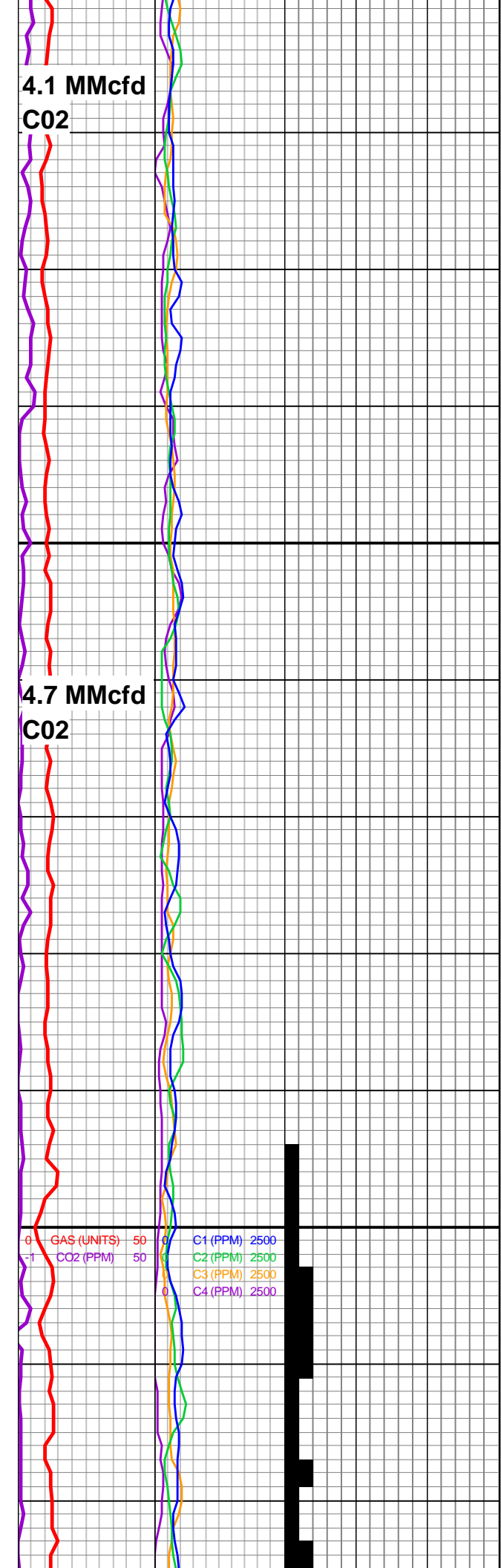
Dol: 35% dark

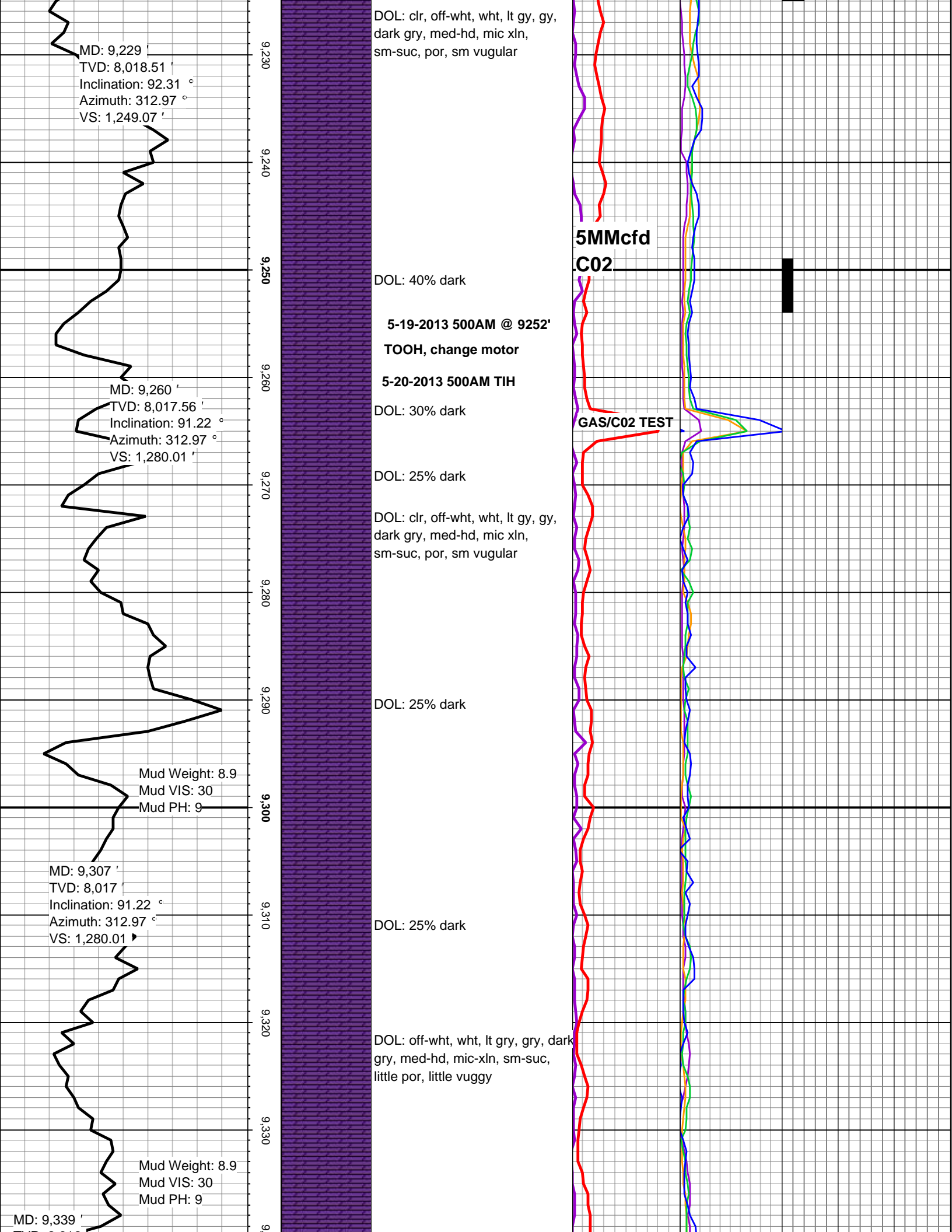
Dol: 35% dark

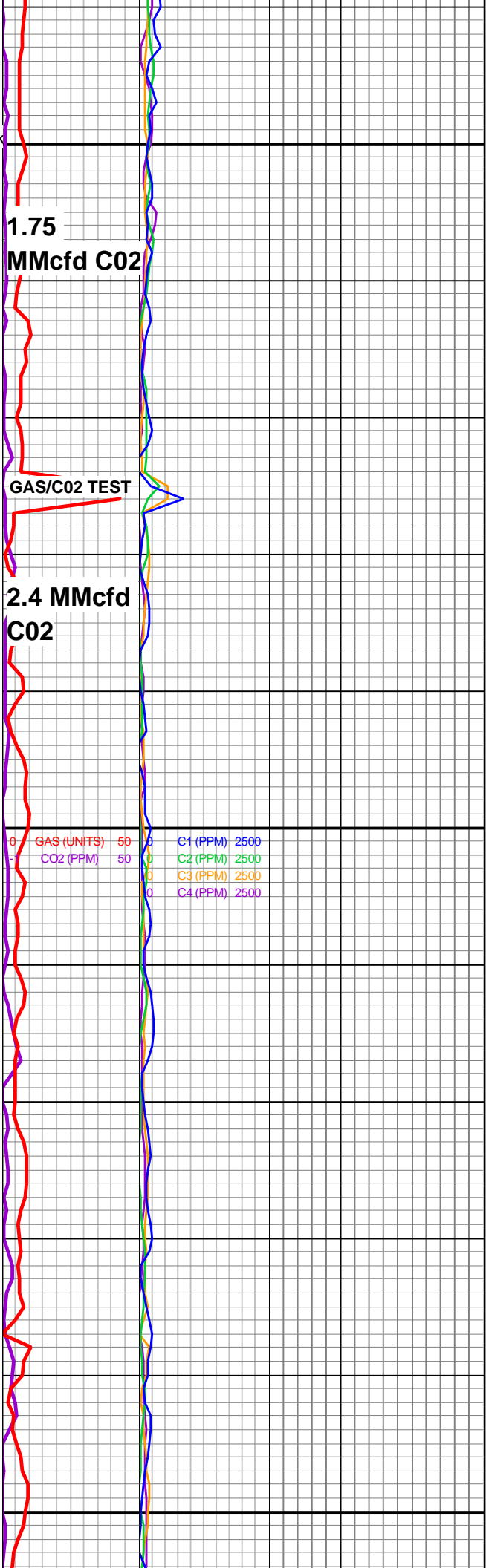
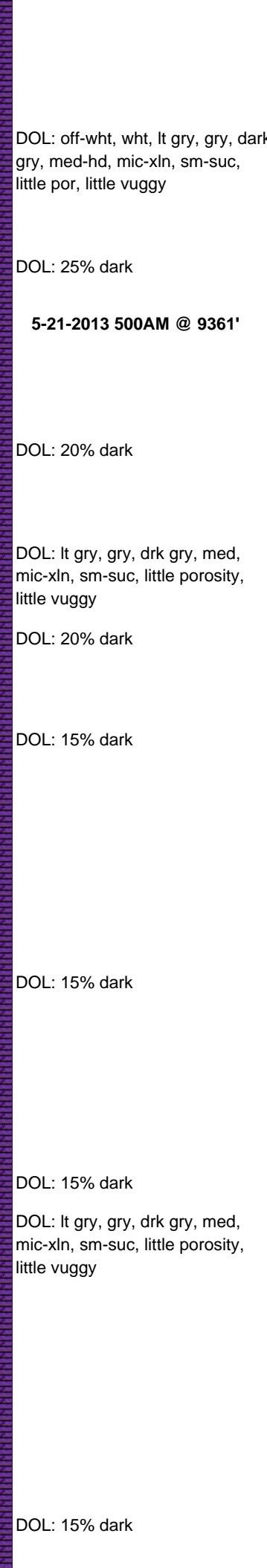
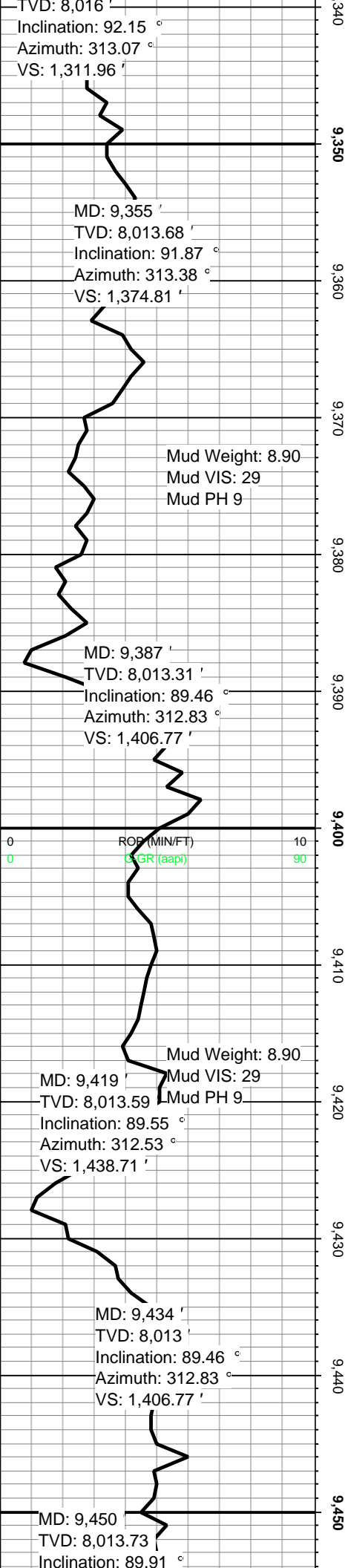
DOL: clr, off-wht, wht, lt gy, gy,
dark gry, med-hd, mic xln,
sm-suc, por, sm vugular

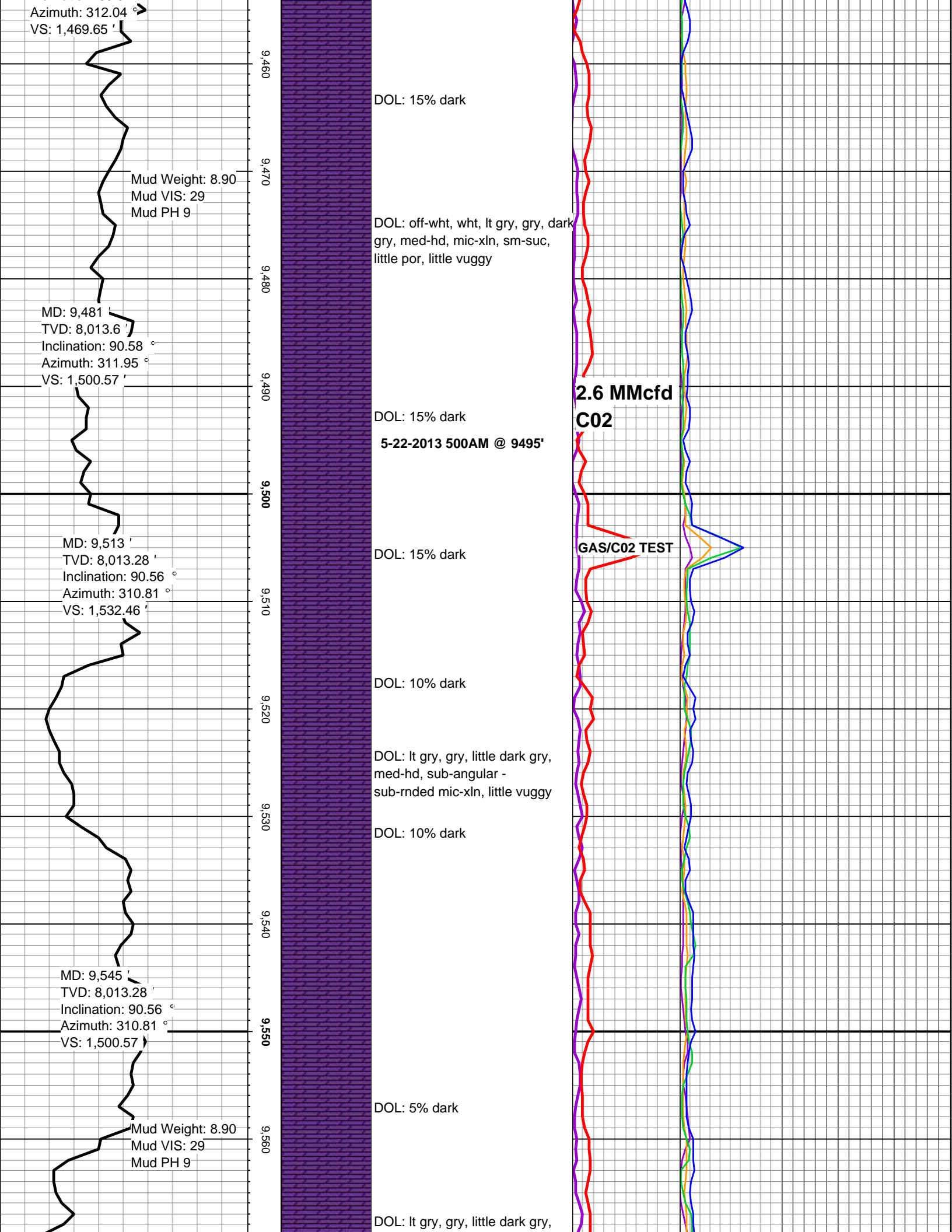
DOL: 45% DARK

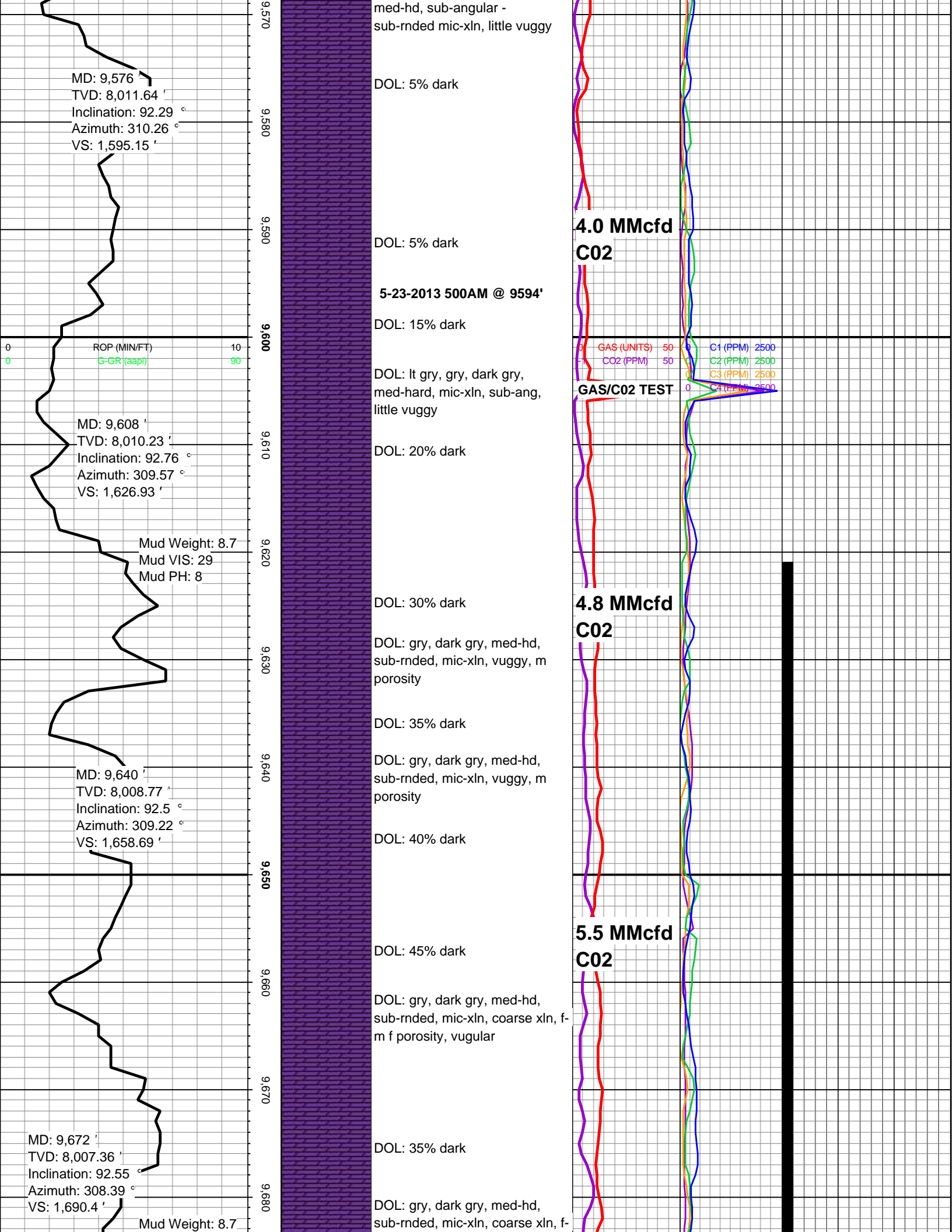
DOL: 45% DARK

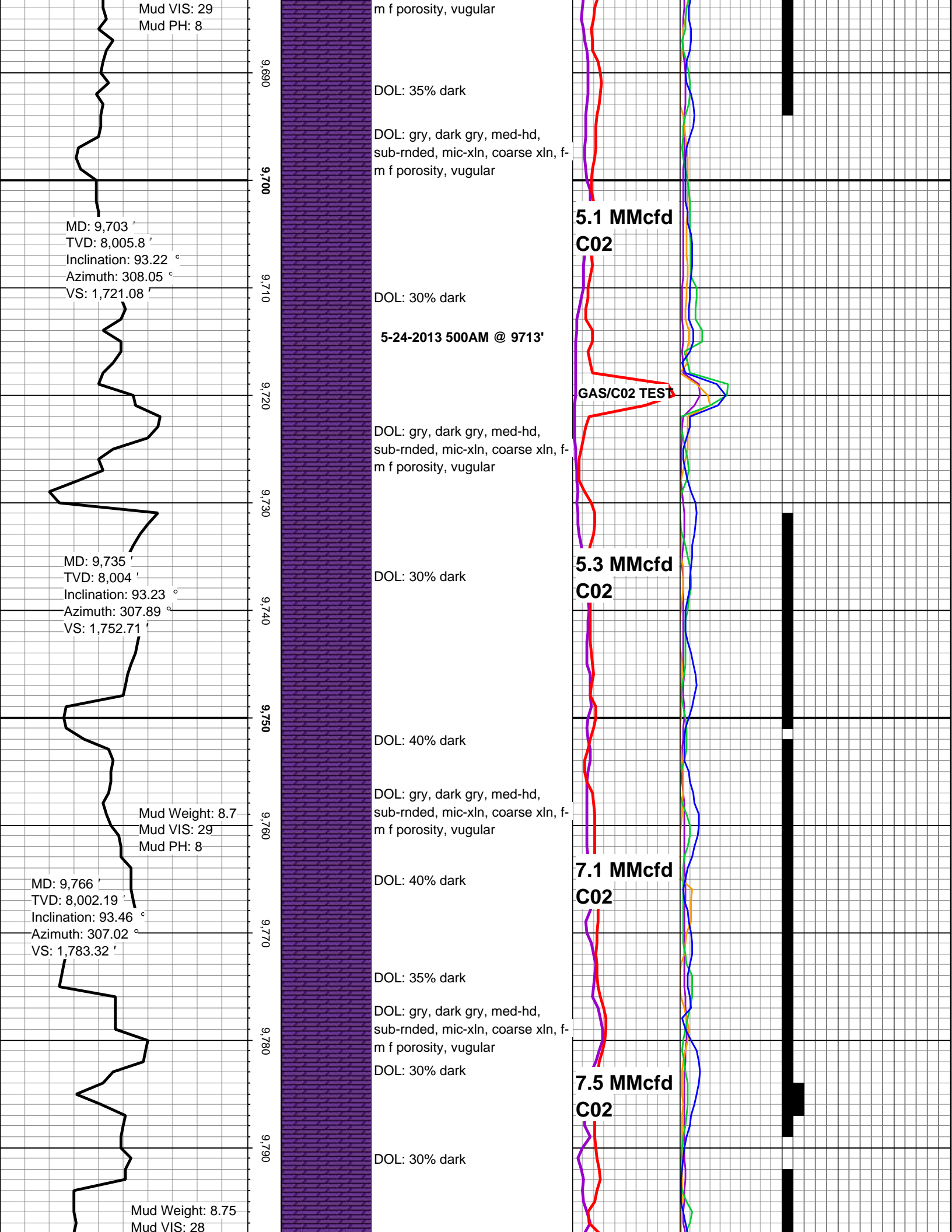


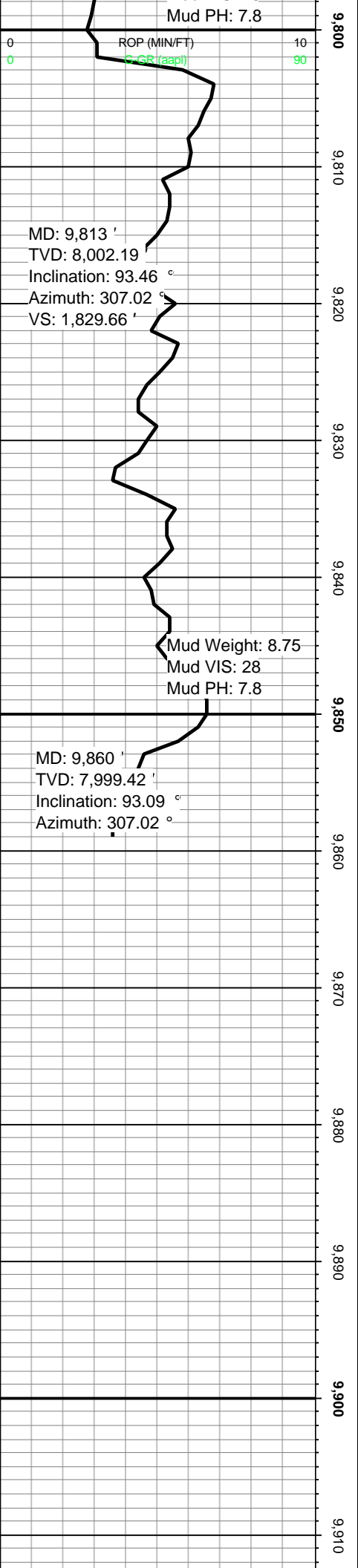












DOL: 30% dark

DOL: lt gry, gry, dark gry, off-wht, med-hd, sub-rnded, sub-angular, mic-axln, coarse xln, f-med porosity, vugular

DOL: 30% dark

5-25-2013 500AM @ 9817'

DOL: 30% dark

DOL: 30% dark

DOL: lt gry, gry, dark gry, off-wht, med-hd, sub-rnded, sub-angular, mic-axln, coarse xln, f-med porosity, vugular

DOL: 30% dark

DOL: 25% dark

DOL: 15% dark

TD-5/25/2013 (SAT)
@ 9860'

Released 5/26/2013 by Dave Moore

