



Scale: 9.60" / 100'
Measured Depth Log

Well Name Doe Canyon #2 (Vertical Sidetrack #2) M-13

State CO

County Dolores

Country US

Rig Number Nabors M-13

Field Doe Canyon

Surface Coordinates SEC 18 TWN 40N RNG 17W

918 FNL, 245 FWL

Bottom Hole Coordinates SEC 13 TWN 40N RNG 18W

Ground Elevation 7272

K.B. Elevation 7292

Type of Drilling Fluid Fresh water

Operator

Company KINDER MORGAN

Geologist

Name Steven Moran

Company Above Enterprise

Rock Types

? UNKNOWN
ANHYDRITE
GYPSUM
SALT
SIDERITE or LIMONITE
LIMESTONE

DOLOMITE
CHERT
COAL
MARLSTONE
CLAYSTONE
SHALE

SHALE GRAY
SHALE COLORED
SILTSTONE
SANDSTONE
CONGLOMERATE
BRECCIA

TILL
BENTONITE
TUFF
IGNEOUS
METAMORPHIC

Accessories

Fossils

- ALGAE
- AMPHIPORA
- BELEMNITE
- BIOCLASTIC
- BRACHIOPOD
- BRYOZOA
- CEPHALOPOD
- CORAL
- CRINOID
- ECHINOID
- FISH
- FORAMINIFERA

F FOSSIL

- GASTROPOD
- LOOLITE
- OSTRACOD
- PELECYPOD
- PELLET
- PISOLITE
- PLANT REMAINS
- PLANT SPORES
- SCAPHOPOD
- STROMATOPOROID

Minerals

- ANHYDRITIC

ARGILLACEOUS

- ARGILLITE GRAIN
- BENTONITE
- BITUMENOUS SUBSTANCE
- BRECCIA FRAGMENTS
- CALCAREOUS
- CARBONACEOUS FLAKES
- CHTDK
- CHTLT
- COAL - THIN BEDS
- DOLOMITIC
- FELDSPAR
- FERRUGINOUS PELLET
- FERRUGINOUS

GLAUCONITE

- GYPHSIFEROUS
- HEAVY MINERAL
- KAOLIN
- MARLSTONE
- MINERAL CRYSTALS
- NODULES
- PHOSPHATE PELLETS
- PYRITE
- SALT CAST
- SANDY
- SILICEOUS
- SILTY
- TUFFACEOUS

Stringer

- ANHYDRITE STRINGER
- BENTONITE STRINGER
- COAL STRINGER
- DOLOMITE STRINGER
- GYPHUM STRINGER
- LIMESTONE STRINGER
- MARLSTONE (CALC) STRG
- MARLSTONE (DOL) STRG
- SANDSTONE STRINGER
- SHALE STRINGER
- SILTSTONE STRINGER

Other Symbols

Oil Show

- DEAD
- EVEN
- QUESTIONABLE
- SPOTTED STAINING

Porosity

- E EARTHY
- FENESTRAL
- FRACTURE
- INTERCRYSTALLINE
- INTEROOLITIC

- MOLDIC
- ORGANIC
- PINPOINT
- VUGGY

Engineering

- BIT
- CONNECTION (LEFT)
- CONNECTION (RIGHT)
- CONNECTION GAS
- CORE - LOST
- CORE - RECOVERED
- DST INTERVAL

- FAULT
- FORMATION TOP
- GAS SHOW
- MN DEPTH
- NORMAL FAULT
- OIL SHOW
- OVERTURNED STRATA
- REVERSE FAULT
- SIDEWALL CORE (LEFT)
- SIDEWALL CORE (RIGHT)
- SLIDE
- SURVEY
- TRIP GAS

- WIRELINE TESTED - LEFT
- WIRELINE TESTED - RT

Rounding

- ANGULAR
- ROUNDED
- SUBANG
- SUBRND

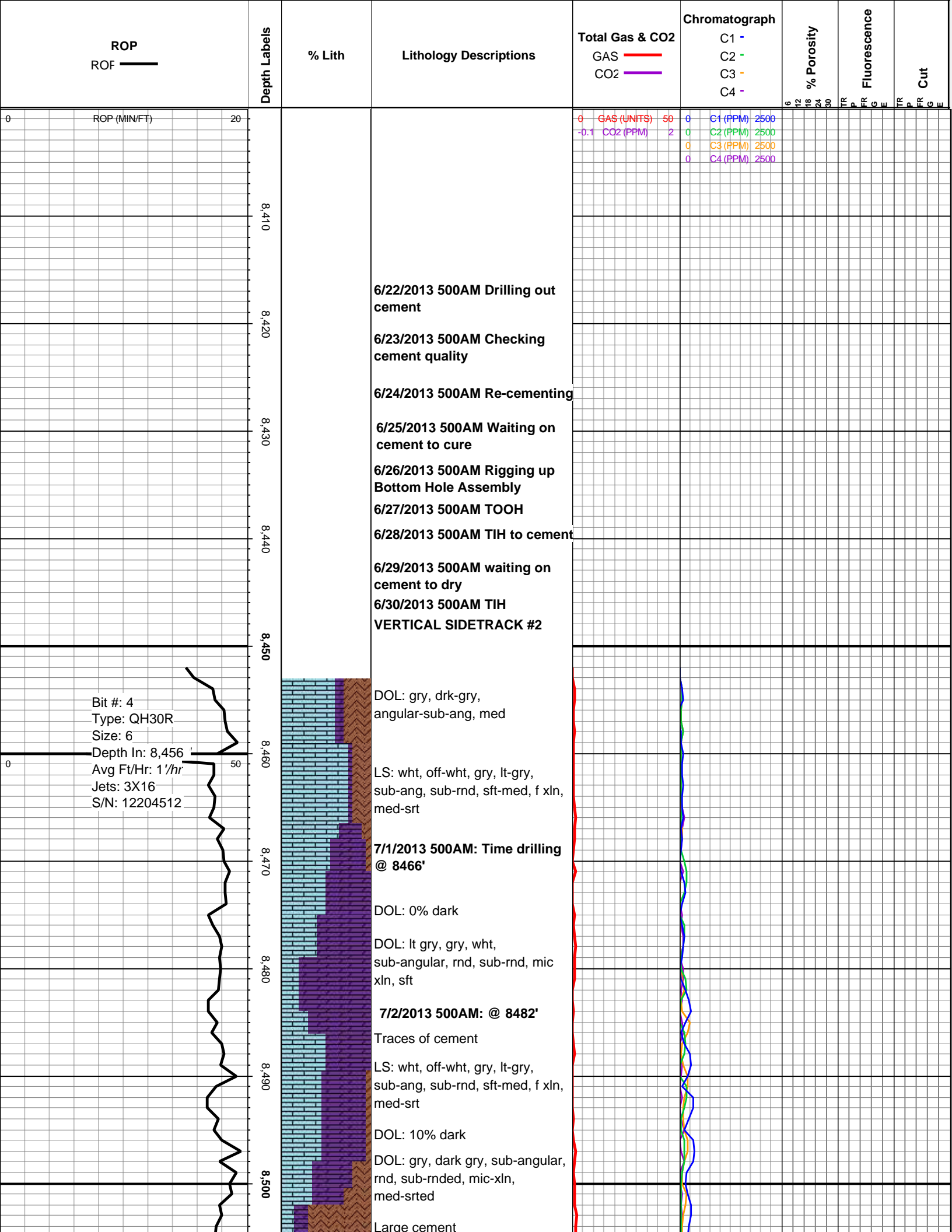
Textures

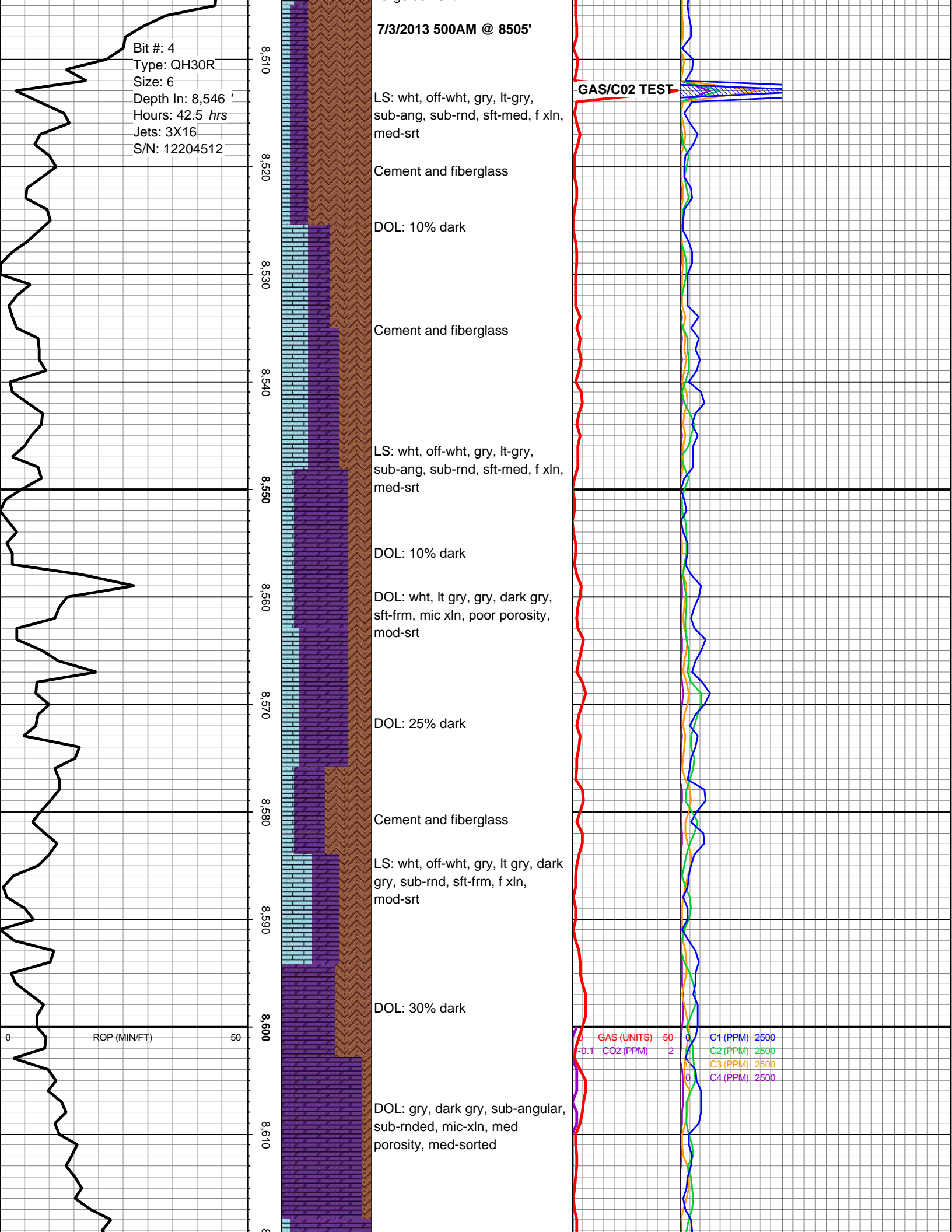
- BOUNDSTONE
- CHALKY
- CRYPTOXLN

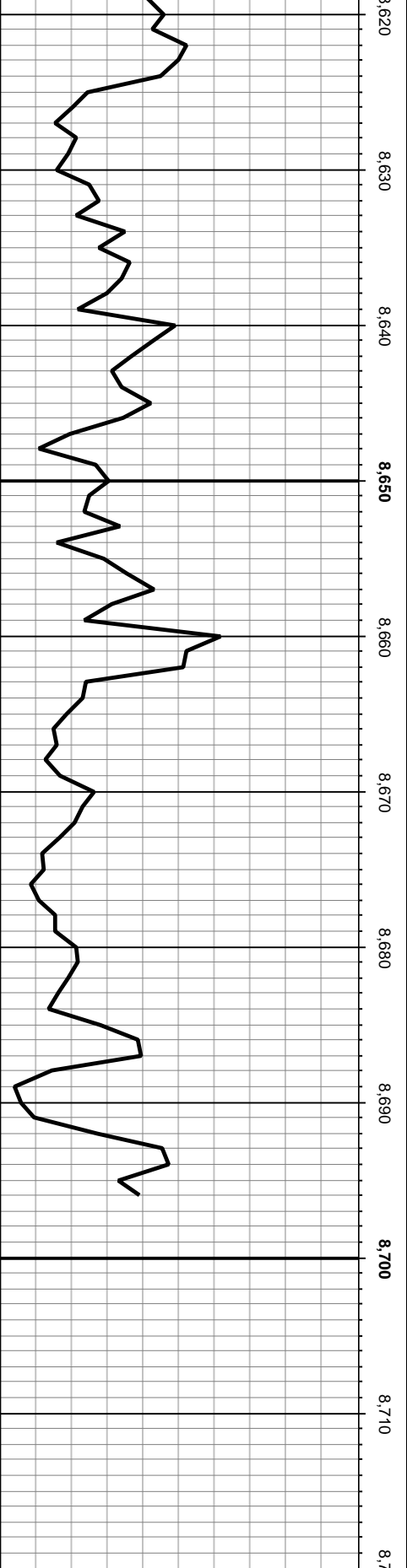
- E EARTHY
- FINELYXLN
- GRAINSTONE
- L LITHOGRAPHIC
- M MICROXLN
- MUDSTONE
- PACKSTONE
- WACKESTONE

Sorting

- M MODERATE
- P POOR
- W WELL







DOL: 50% dark

LS: wht, off-wht, gry, lt gry, dark gry, sub-rnd, sft-frn, f xln, mod-srt

DOL: 90% dark

DOL: gry, dark gry, sub-angular, sub-rnded, mic-xln, med porosity, med-sorted

DOL: 90% dark

DOL: gry, dark gry, sub-angular, sub-rnded, mic-xln, med porosity, med-sorted

DOL: 80% dark

Traces of limestone

DOL: 100% dark

DOL: drk gry, sub-angular, sub-rnded, rnded, f xln, med porosity, med-sorted

Traces of limestone

DOL: 90% dark

7/4/2013 500AM @ 8696'

**TD- 7/4/2013 (THUR)
@ 8700'**

**Released 7/4/2013 by
Company man Scott
Watkins**

