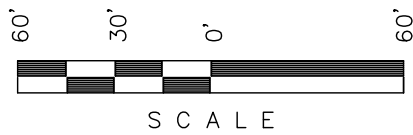
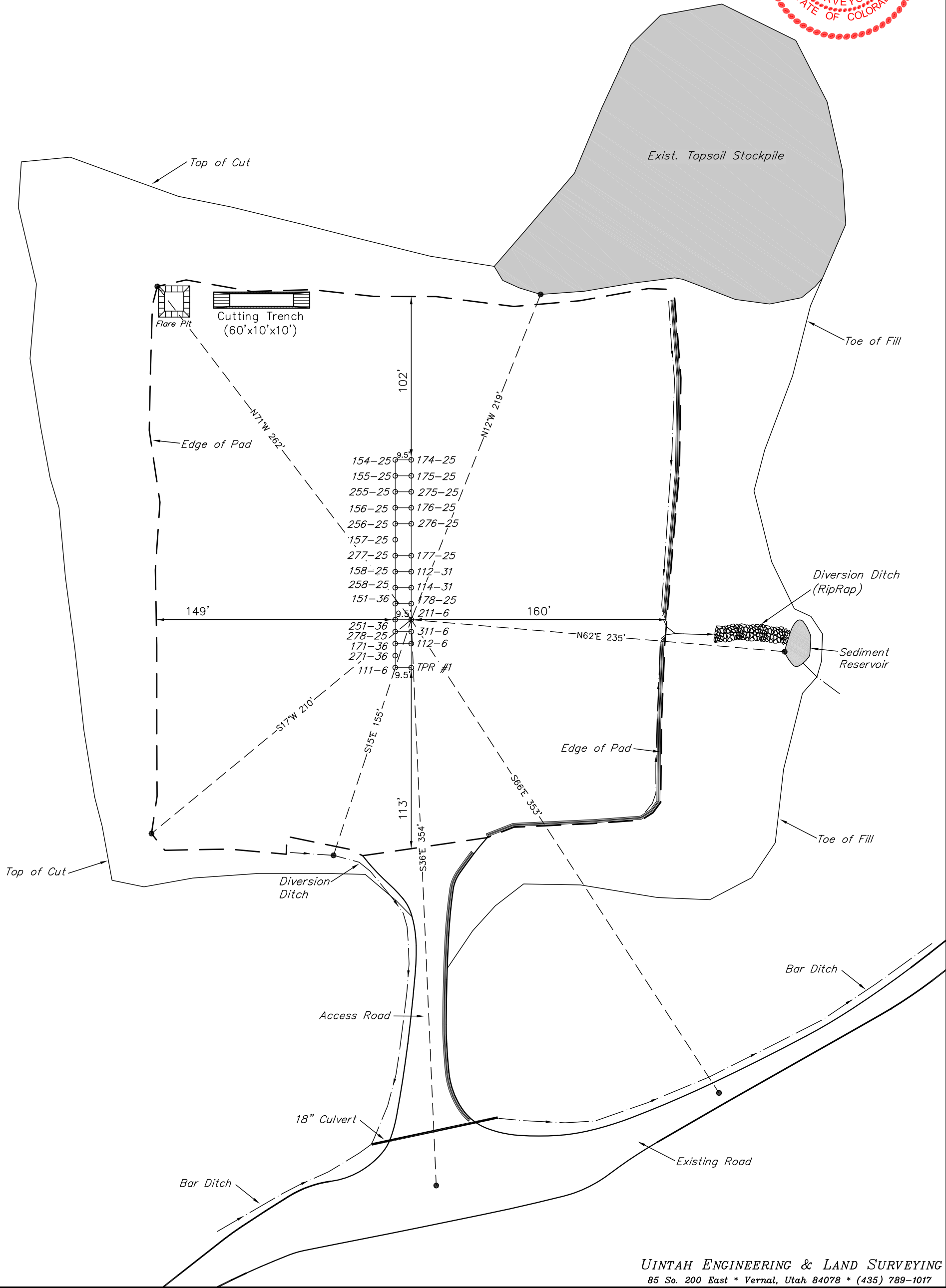


BLACK DIAMOND MINERALS, LLC  
ADDENDUM TO LEGAL PLAT FOR  
TPR WELL PAD 25A  
SECTION 25, T7S, R94W, 6th P.M.  
SW 1/4 SE 1/4



Sheet 1 of 14

SCALE: 1" = 60'  
DATE: 05-05-10  
DRAWN BY: D.R.B.  
Revised: 07-02-10 D.R.B.



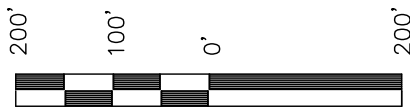
25



BLACK DIAMOND MINERALS, LLC

LOCATION DRAWING

TPR WELL PAD 25A  
SECTION 25, T7S, R94W, 6th P.M.  
SW 1/4 SE 1/4



SCALE

LOT 2

SCALE: 1" = 200'  
DATE: 08-04-08  
DRAWN BY: D.R.B.  
Revised: 07-02-10 D.R.B.

Sheet 3 of 14



LOT 3

400' Offset  
from edge of  
Disturbance

SE 1/4

1/16 Section Line

1/16 Section Line

BLACK DIAMOND  
MINERALS, LLC.

Topsoil Stockpile

Top of Cut

Sediment Reservoir

WELL HEAD 211-6  
(NAD 83)  
Latitude: 39.404403°  
Longitude: 107.832644°

400' Offset  
from edge of  
Disturbance

LOT 4

Cutting  
Trench

Flare Pit

Edge of  
Pad

Top of Cut

Prod. Equip.  
Area

Access Road

Exist. 18" Culvert

Existing Road

Section Line

S89°56'37"W - 2660.41' (Meas.)

1920 Brass Cap  
1.7' High  
Lat: 39.402706  
Long: 107.835361

SE Cor Sec 25  
1920 Brass Cap  
1.3' High  
Lat: 39.402717  
Long: 107.825950

25

SCALE: 1" = 400'  
 DATE: 05-07-10  
 DRAWN BY: D.R.B.  
 Rev: 07-02-10 D.R.B.

## BERRY PETROLEUM COMPANY

## CURRENT FOOTAGE FOR

TPR WELL PAD 25A

SECTION 25, T7S, R94W, 6th P.M.

B.L.M.  
(U.S.A.)SW 1/4 SE 1/4  
Lot 2

Sheet 6b of 14

1/4 Section Line

1/4 Section Line

N16°W 9,170' to Building  
 N22°W 38,190' to Railroad

North 2,505' to Property Line

S02°W 20,323' to Utility Line

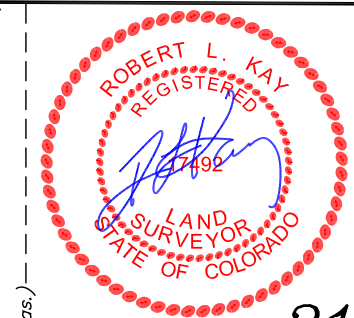
N30°E 2,909' to Public Road

Lot 3

1920 Brass Cap  
 0.9' High  
 Lat: 39.409969  
 Long: 107.825939

N00°17'33"E  
 137.31' (Meas.)

1948 Brass Cap  
 1.0' High  
 Lat: 39.409594  
 Long: 107.825939



31

1/16 Section Line

BLACK DIAMOND  
MINERALS, LLC.

Existing Road

Lot 4

East 9198.24' to Water Well

Proposed Access  
Road

1920 Brass Cap  
 1.7' High  
 Lat: 39.402706  
 Long: 107.835361

S63°E 1,100' to Surface Water  
 Beaver Creek

Section Line

S89°56'37"W - 2660.41' (Meas.)

N00°35'27"W  
 437.55' (Meas.)

C.C. SW Cor Sec 31  
 1947 Brass Cap  
 1.7' High  
 Lat: 39.403919  
 Long: 107.825967

1920 Brass Cap  
 1.3' High  
 Lat: 39.402717  
 Long: 107.825950

LINE TABLE		
LINE	BEARING	LENGTH
L1	S41°23'27"E	340.92'

▲ = SECTION CORNER LOCATED.

Lot 2

Lot 1

36

6

UINTAH ENGINEERING &amp; LAND SURVEYING

85 So. 200 East \* Vernal, Utah 84078 \* (435) 789-1017