

# LEGEND:

● PROPOSED LOCATION



BLACK DIAMOND MINERALS, LLC.

TPR WELL PAD 25A  
SECTION 25, T7S, R94W, 6th P.M.  
SW 1/4 SE 1/4 SHEET 10 OF 14



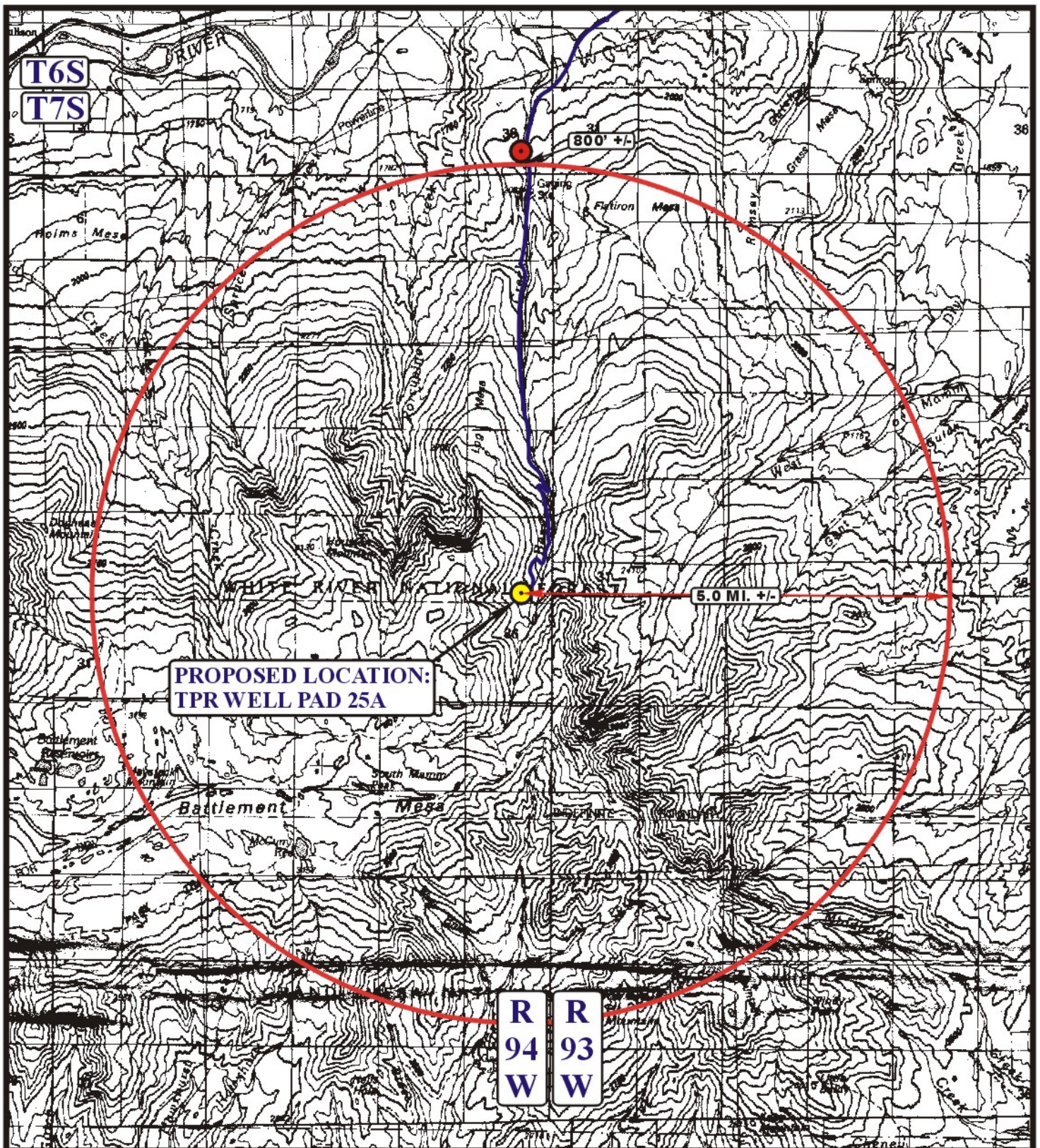
Uintah Engineering & Land Surveying  
85 South 200 East Vernal, Utah 84078  
(435) 789-1017 \* FAX (435) 789-1813

ACCESS ROAD  
MAP

04 03 08  
MONTH DAY YEAR



SCALE: 1:100,000 DRAWN BY: Z.L. REV: 07-01-10 J.J.



# LEGEND:

- PROPOSED LOCATION
- RIFLE CITY WATERSHED'S DISTRICT DRAW POINT



Uintah Engineering & Land Surveying  
 85 South 200 East Vernal, Utah 84078  
 (435) 789-1017 \* FAX (435) 789-1813



BLACK DIAMOND MINERALS, LLC.

TPR WELL PAD 25A  
 SECTION 25, T7S, R94W, 6th P.M.  
 SW 1/4 SE 1/4

SHEET 10A OF 14

TOPOGRAPHIC  
 MAP

04 03 08  
 MONTH DAY YEAR

SCALE: 1:100,000 DRAWN BY: Z.L. REV: 07-01-10 J.J.

A1  
 TOPO

**B**  
**TOPO**