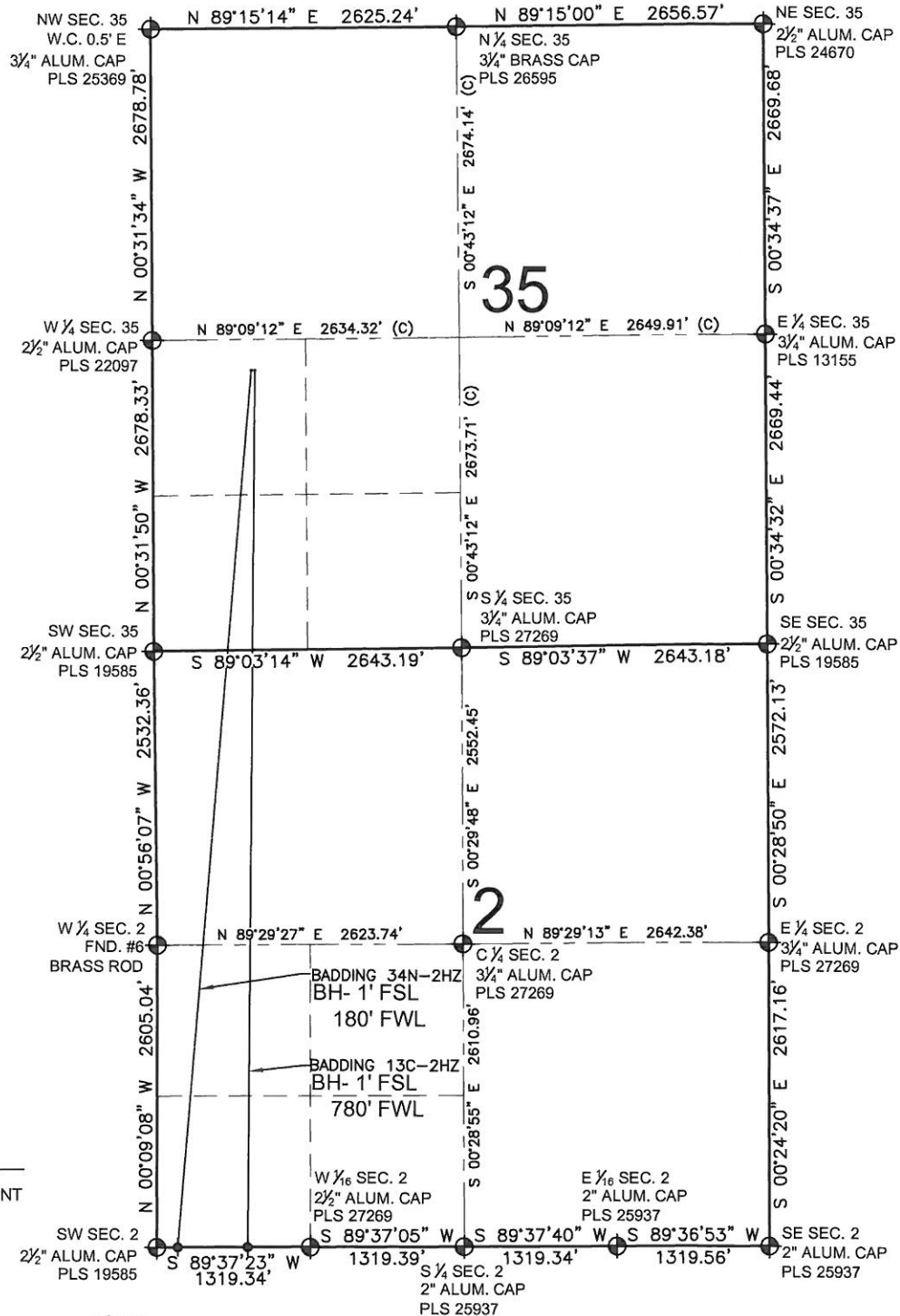


# BADDING 34N-2HZ MULTI-WELL PLAN

SECTION 35, TOWNSHIP 2 NORTH, RANGE 66 WEST, 6TH P.M.



**LEGEND**

- ⊕ = EXISTING MONUMENT
- = PROPOSED WELL
- ⬮ = BOTTOM HOLE
- BH = BOTTOM HOLE

**NOTES:**  
 BADDING 34N-2HZ TO BE AT 2412' FSL, 851' FWL.  
 BOTTOM HOLE AT 1' FSL & 180' FWL, SEC 2  
 BADDING 13C-2HZ TO BE AT 2411' FSL, 881' FWL.  
 BOTTOM HOLE AT 1' FSL & 780' FWL, SEC 2

PREPARED BY:

**PFS** llc  
 Petroleum Field Services, LLC  
 1801 W. 13th Ave.  
 Denver, CO 80204

KERR-MCGEE OIL & GAS ONSHORE LP

FIELD DATE: 06-10-13	SURFACE LOCATION: NW 1/4 SW 1/4, SEC. 35, T2N, R66W, 6TH P.M. WELD COUNTY, COLORADO
DRAWING DATE: 06-12-13	

