



Scale: 5" / 100'
Measured Depth Log

Well Name HE-6 Lat (ML-569)

Location SWSE 13 7N 18W N PM

State CO

County Montezuma

Country US

Rig Number Nabors 405

API Number 05-083-06701

Region McElmo Dome

Field Mc Elmo Dome

Spud Date Fri Mar 22 00:00:00 MDT 2013

Surface Coordinates SHL: 275 FNL & 10 FWL, SECTION 1 T37N R19W NMPM

Bottom Hole Coordinates BHL: Horizontal Well, 1714 FNL & 1420 FWL, Section 1 T37N, R19W
135 deg azimuth from SHL (2000' MAX lateral extension)

Ground Elevation 6475'

K.B. Elevation 6500'

Logged Interval 8150'

Formation Leadville Base

Type of Drilling Fluid Fresh Water/Underbalanced

Operator

Company KINDER MORGAN

Geologist

Name Leon Walters

Other

ML-569

Rock Types

UNKNOWN	ANHYDRITE	DOLOMITE	SHALE GRAY	TILL
GYPSUM	SALT	CHERT	SHALE COLORED	BENTONITE
SIDERITE or LIMONITE	CLAYSTONE	MARLSTONE	SILTSTONE	TUFF
LIMESTONE	SHALE	CONGLOMERATE	BRECCIA	IGNEOUS
				METAMORPHIC

Accessories

Fossils

ALGAE
AMPHIPORA
BELEMNITE
BIOCLASTIC
BRACHIOIPOD
BRYOZOA
CEPHALOPOD
CORAL
CRINOID
ECHINOID
FISH
FORAMINIFERA

Fossils

GASTROPOD
OOLITE
OSTRACOD
PELECYPOD
PELLET
PISOLITE
PLANT REMAINS
PLANT SPORES
SCAPHOPOD
STROMATOPOROID

Minerals

ANHYDRITIC

Minerals

ARGILLACEOUS
ARGILLITE GRAIN
BENTONITE
BITUMENOUS SUBSTANCE
BRECCIA FRAGMENTS
CALCAREOUS
CARBONACEOUS FLAKES
CHTDK
CHTLT
COAL - THIN BEDS
DOLOMITIC
FELDSPAR
FERRUGINOUS PELLET
FERRUGINOUS

Minerals

GLAUCONITE
GYPSIFEROUS
HEAVY MINERAL
KAOLIN
MARLSTONE
MINERAL CRYSTALS
NODULES
PHOSPHATE PELLETS
PYRITE
SALT CAST
SANDY
SILICEOUS
SILTY
TUFFACEOUS

Stringer

ANHYDRITE STRINGER
BENTONITE STRINGER
COAL STRINGER
DOLOMITE STRINGER
GYPSUM STRINGER
LIMESTONE STRINGER
MARLSTONE (CALC) STRG
MARLSTONE (DOL) STRG
SANDSTONE STRINGER
SHALE STRINGER
SILTSTONE STRINGER

Other Symbols

Oil Show

DEAD
EVEN
QUESTIONABLE
SPOTTED STAINING

Porosity

EARTHY
FENESTRAL
FRACTURE
INTERCRYSTALLINE
INTEROOLITIC

Oil Show

MOLDIC
ORGANIC
PINPOINT
VUGGY

Engineering

BIT
CONNECTION (LEFT)
CONNECTION (RIGHT)
CONNECTION GAS
CORE - LOST
CORE - RECOVERED
DST INTERVAL

Other Symbols

FAULT
FORMATION TOP
GAS SHOW
MN DEPTH
NORMAL FAULT
OIL SHOW
OVERTURNED STRATA
REVERSE FAULT
SIDEWALL CORE (LEFT)
SIDEWALL CORE (RIGHT)
SLIDE
SURVEY
TRIP GAS

Other Symbols

WIRELINE TESTED - LEFT
WIRELINE TESTED - RT

Rounding

ANGULAR
ROUNDED
SUBANG
SUBRND

Textures

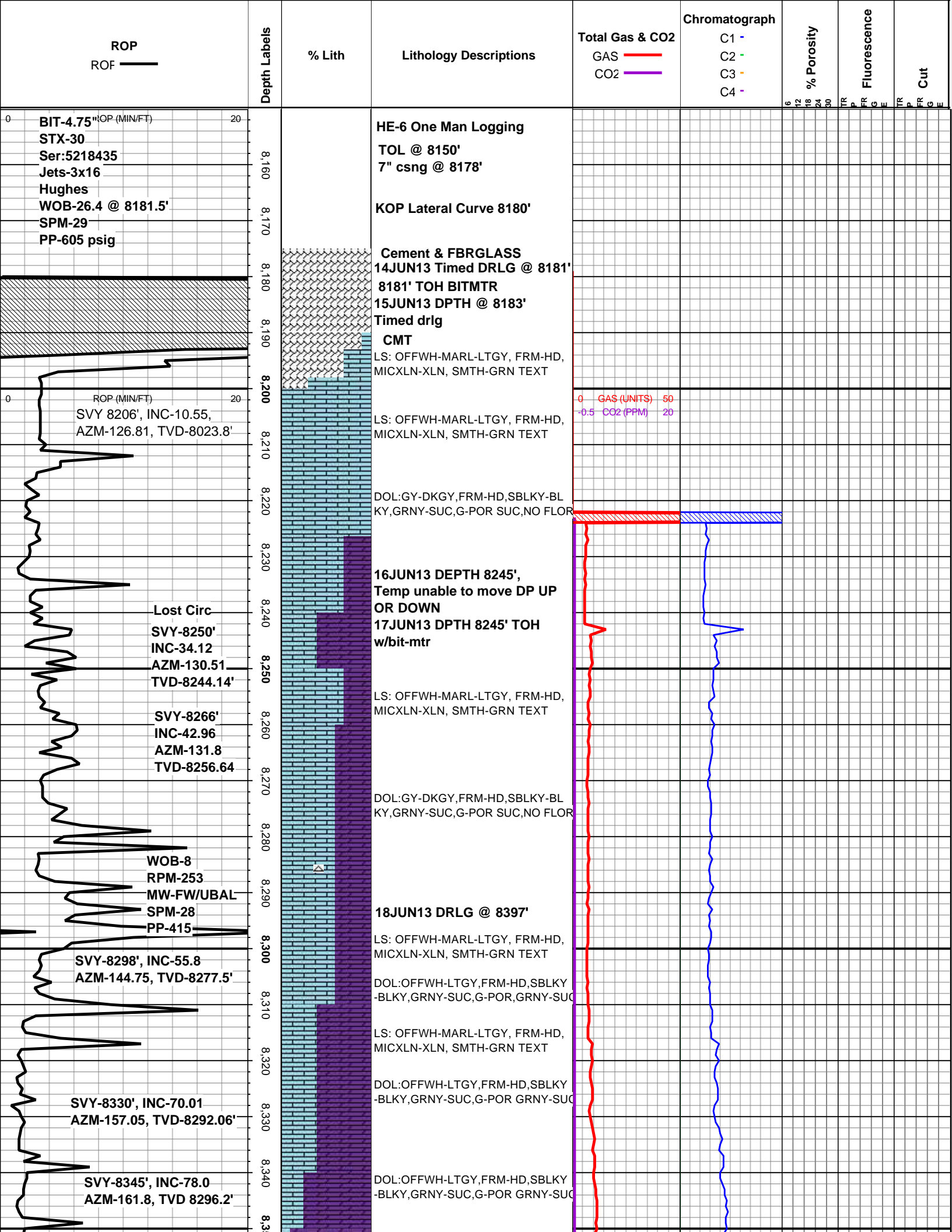
BOUNDSTONE
CHALKY
CRYPTOXLN

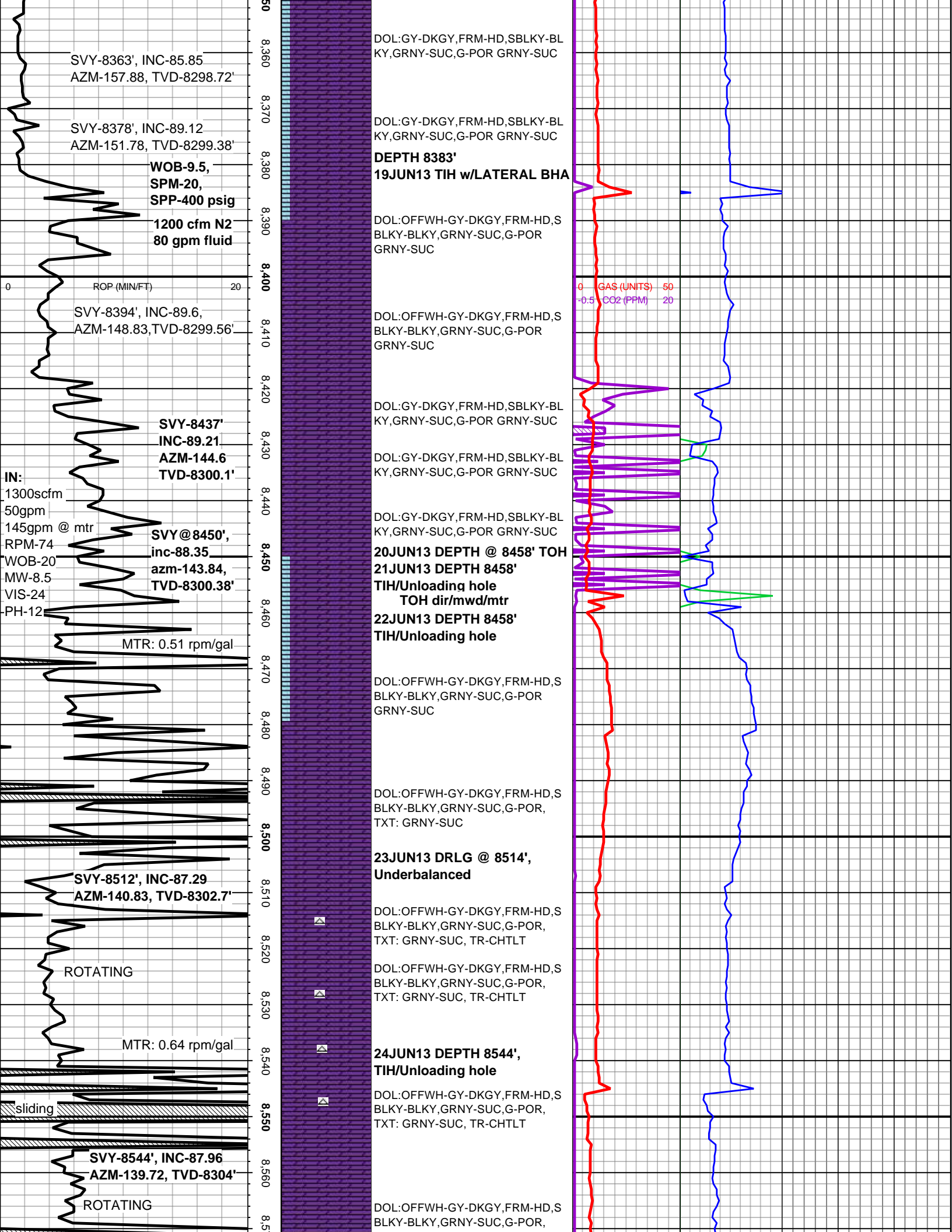
Other Symbols

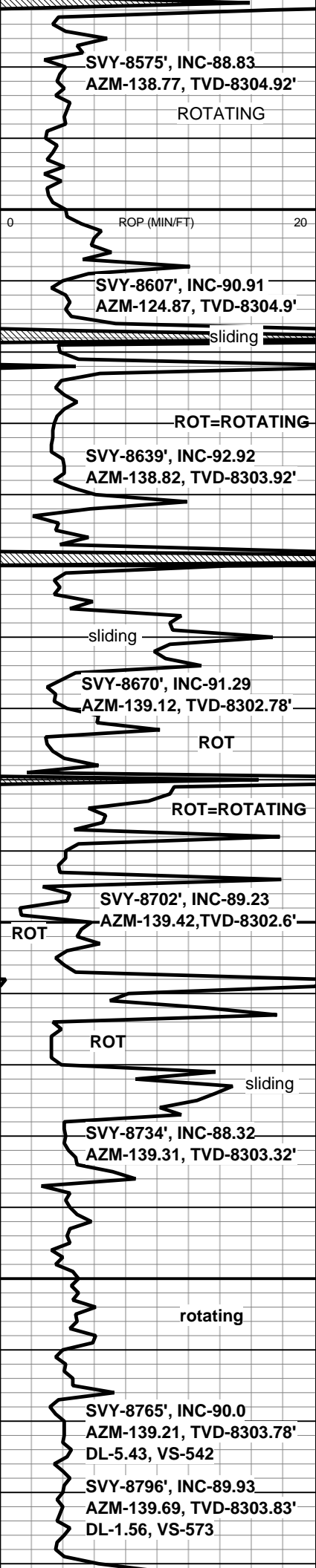
EARTHY
FINELYXLN
GRAINSTONE
LITHOGRAPHIC
MICROXLN
MUDSTONE
PACKSTONE
WACKESTONE

Sorting

MODERATE
POOR
WELL







8,570
8,580
8,590
8,600
8,610
8,620
8,630
8,640
8,650
8,660
8,670
8,680
8,690
8,700
8,710
8,720
8,730
8,740
8,750
8,760
8,770
8,780
8,790

TX: GRNY-SUC, TR-CHTLT

DOL:OFFWH-GY-DKGY,FRM-HD,S
BLKY-BLKY,GRNY-SUC,G-POR,
TXT: GRNY-SUC

DOL:OFFWH-GY-DKGY,FRM-HD,S
BLKY-BLKY,GRNY-SUC,G-POR,
TXT: GRNY-SUC

25JUN13 DRLG @ 8631'

DOL:OFFWH-GY-DKGY,FRM-HD,S
BLKY-BLKY,GRNY-SUC,G-POR,
TXT: GRNY-SUC

DOL:OFFWH-GY-DKGY,FRM-HD,S
BLKY-BLKY,GRNY-SUC,G-POR,
TXT: GRNY-SUC

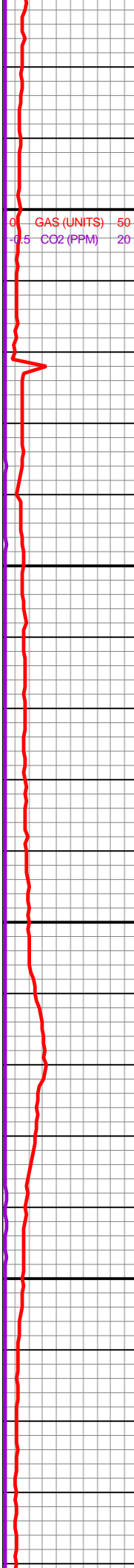
DOL:OFFWH-GY-DKGY,FRM-HD,S
BLKY-BLKY,GRNY-SUC,G-POR,
TXT: GRNY-SUC

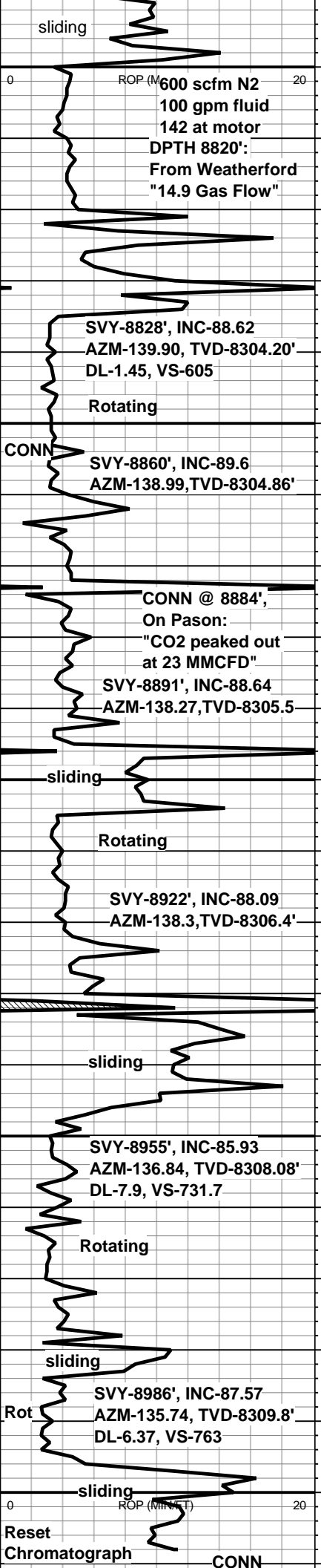
DOL:OFFWH-GY-DKGY,FRM-HD,S
BLKY-BLKY,GRNY-SUC,G-POR,
TXT: GRNY-SUC

DOL:OFFWH-GY-DKGY,FRM-HD,S
BLKY-BLKY,GRNY-SUC,G-POR,
TXT: GRNY-SUC

DOL:OFFWH-GY-DKGY,FRM-HD,S
BLKY-BLKY,GRNY-SUC,G-POR,
TXT: GRNY-SUC

DOL:OFFWH-GY-DKGY,FRM-HD,S
BLKY-BLKY,GRNY-SUC,G-POR,
TXT: GRNY-SUC





8800
8810
8820
8830
8840
8850
8860
8870
8880
8890
8900
8910
8920
8930
8940
8950
8960
8970
8980
8990
9000
9010

26JUN13 DRLG @ DEPTH 8805'

DOL:OFFWH-GY-DKGY,FRM-HD,S
BLKY-BLKY,GRNY-SUC,G-POR,
TXT: GRNY-SUC

DOL:OFFWH-GY-DKGY,FRM-HD,S
BLKY-BLKY,GRNY-SUC,G-POR,
TXT: GRNY-SUC

DOL:OFFWH-GY-DKGY,FRM-HD,S
BLKY-BLKY,GRNY-SUC,G-POR,
TXT: GRNY-SUC

DOL:OFFWH-GY-DKGY,FRM-HD,S
BLKY-BLKY,GRNY-SUC,G-POR,
TXT: GRNY-SUC

DOL:DKGY,FRM-HD,SBLKY-BLKY,
GRNY-SUC,G-POR, TXT: GRNY-SUC

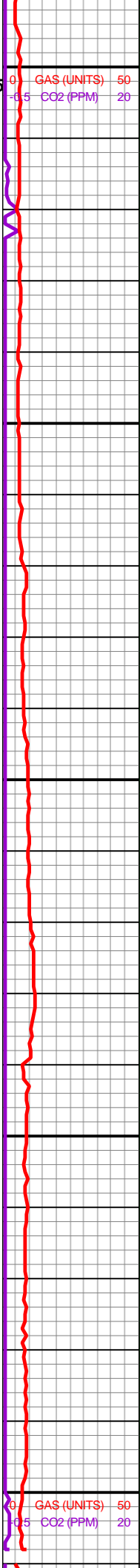
DOL:DKGY,FRM-HD,SBLKY-BLKY,
GRNY-SUC,G-POR, TXT: GRNY-SUC

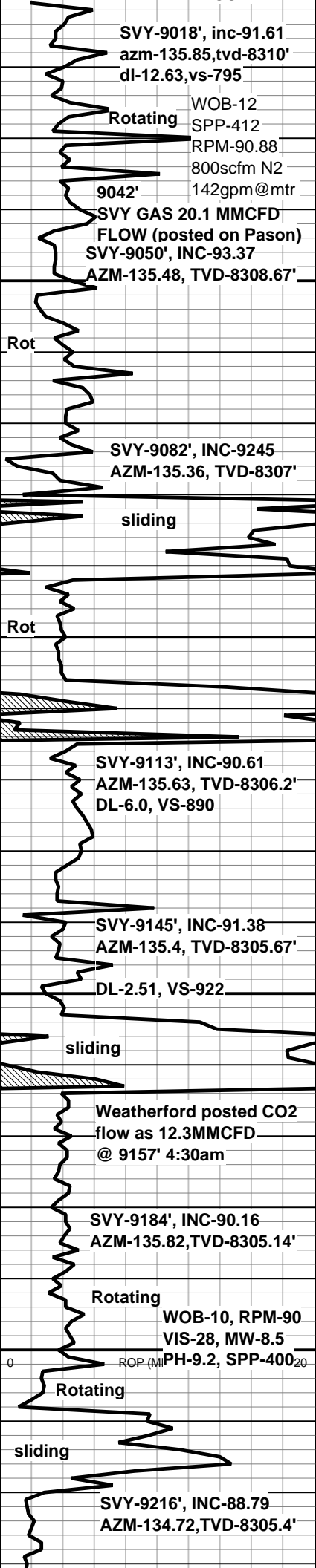
DOL:DKGY,FRM-HD,SBLKY-BLKY,
GRNY-SUC,G-POR, TXT: GRNY-SUC

DOL:DKGY,FRM-HD,SBLKY-BLKY,
GRNY-SUC,G-POR, TXT: GRNY-SUC

27JUN13 DRLG @ 8996'

DOL:OFFWH-GY-DKGY,FRM-HD,S
BLKY-BLKY,GRNY-SUC,G-POR,





9,010
9,020
9,030
9,040
9,050
9,060
9,070
9,080
9,090
9,100
9,110
9,120
9,130
9,140
9,150
9,160
9,170
9,180
9,190
9,200
9,210
9,220
9,230



TEXT: GRNY-SUC

DOL:OFFWH-GY-DKGY,FRM-HD,S
BLKY-BLKY,GRNY-SUC,G-POR,
TXT: GRNY-SUC

DOL:OFFWH-GY-DKGY,FRM-HD,S
BLKY-BLKY,GRNY-SUC,G-POR,
TXT: GRNY-SUC

DOL:OFFWH-GY-DKGY,FRM-HD,S
BLKY-BLKY,GRNY-SUC,G-POR,
TXT: GRNY-SUC

DOL:OFFWH-GY-DKGY,FRM-HD,S
BLKY-BLKY,GRNY-SUC,G-POR,
TXT: GRNY-SUC

DOL:OFFWH-GY-DKGY,FRM-HD,S
BLKY-BLKY,GRNY-SUC,G-POR,
TXT: GRNY-SUC

28JUN13 DRLG @ 9161',
TVD-8306'est

DOL:OFFWH-GY-DKGY,FRM-HD,S
BLKY-BLKY,GRNY-SUC,G-POR,
TXT: GRNY-SUC

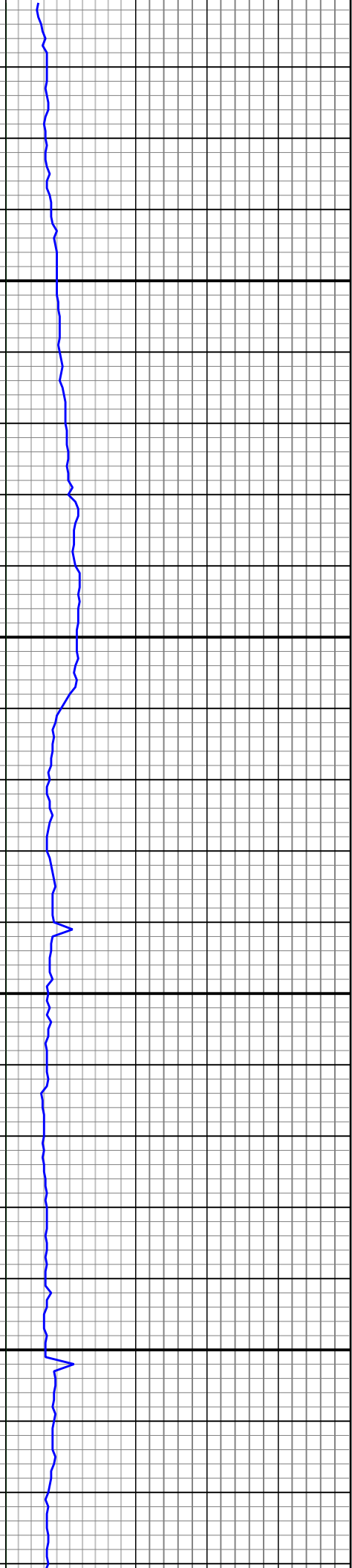
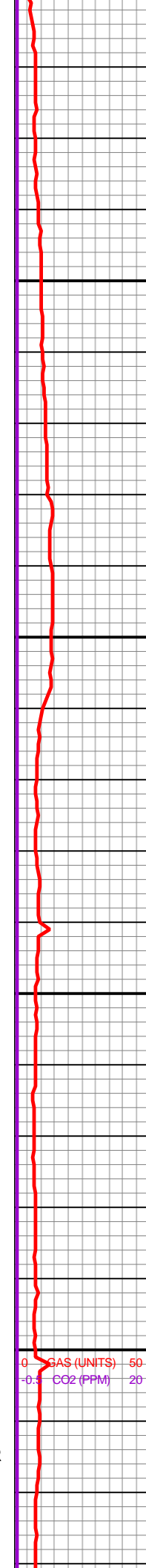
DOL:OFFWH-GY-DKGY,FRM-HD,S
BLKY-BLKY,GRNY-SUC,G-POR,
TXT: GRNY-SUC

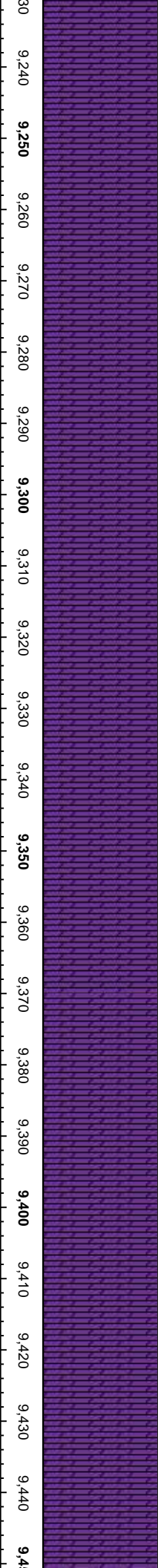
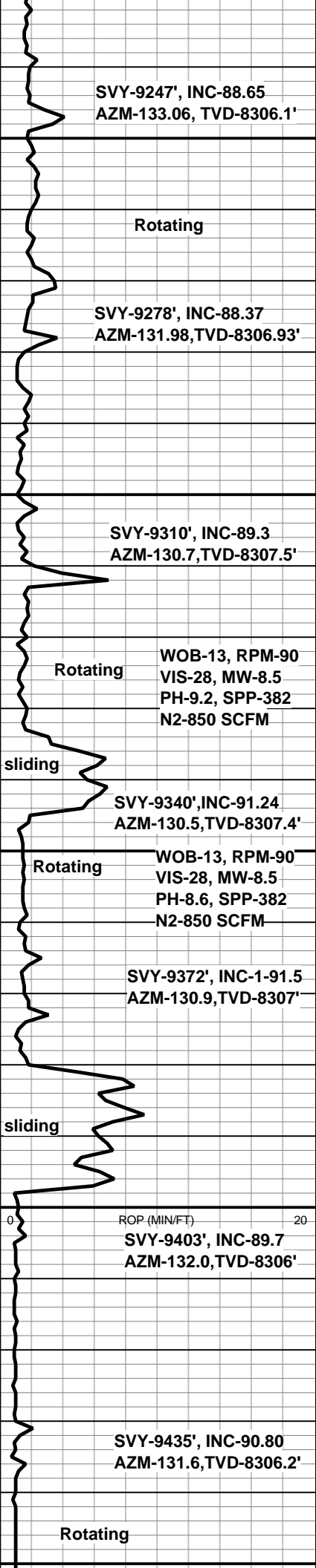
29JUN13 DEPTH-9201', TIH
w/fishing tools

30JUN13 DEPTH 9201'
TIH w/Lateral Bit/BHA

Unloading @ 9175' after trip.
Posted on Pason: '35mmcf
CO2 FLOW"; 800scfm N2,
85gpm fluid; 140gpm @ MTR
=89.6 rpm

DOL:OFFWH-GY-DKGY,FRM-HD,S
BLKY-BLKY,GRNY-SUC,G-POR,
TXT: GRNY-SUC





01JUL13 DRLG @ 9383'

DOL:OFFWH-GY-DKGY,FRM-HD,S
BLKY-BLKY,GRNY-SUC,G-POR,
TXT: GRNY-SUC

DOL:OFFWH-GY-DKGY,FRM-HD,S
BLKY-BLKY,GRNY-SUC,G-POR,
TXT: GRNY-SUC

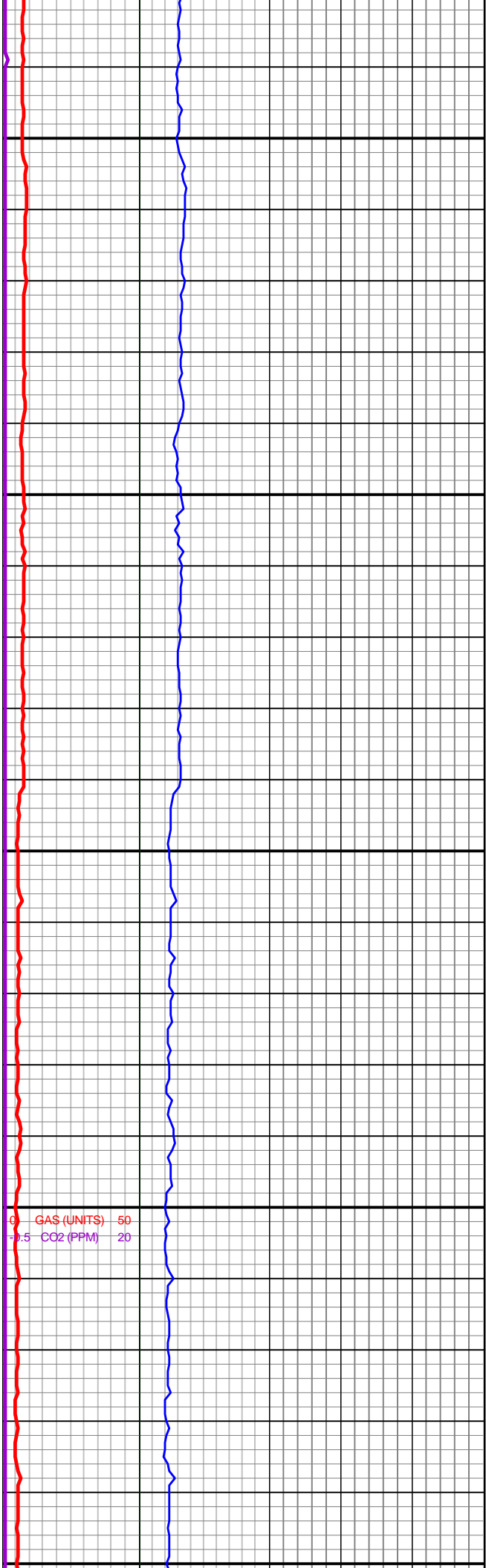
DOL:OFFWH-GY-DKGY,FRM-HD,S
BLKY-BLKY,GRNY-SUC,G-POR,
TXT: GRNY-SUC

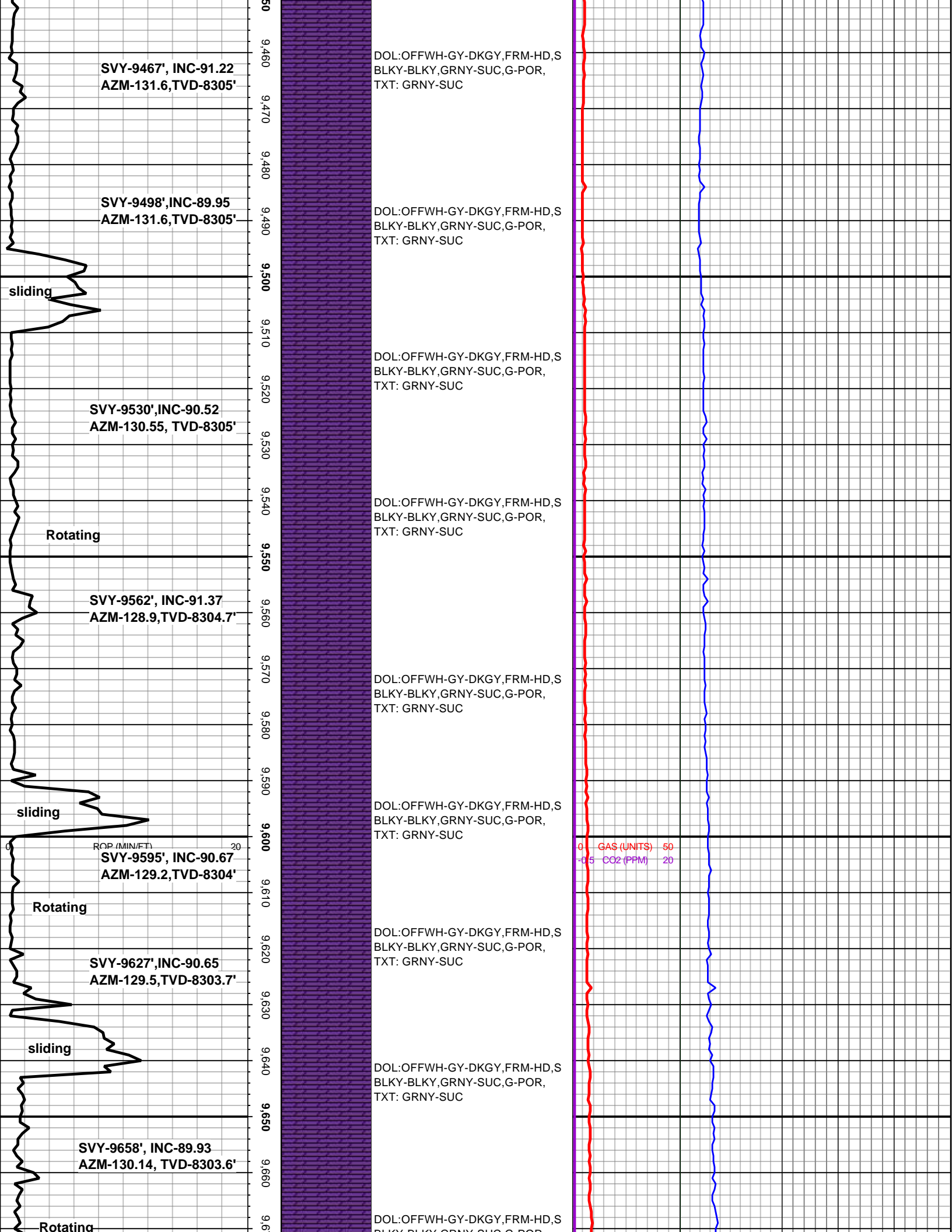
DOL:OFFWH-GY-DKGY,FRM-HD,S
BLKY-BLKY,GRNY-SUC,G-POR,
TXT: GRNY-SUC

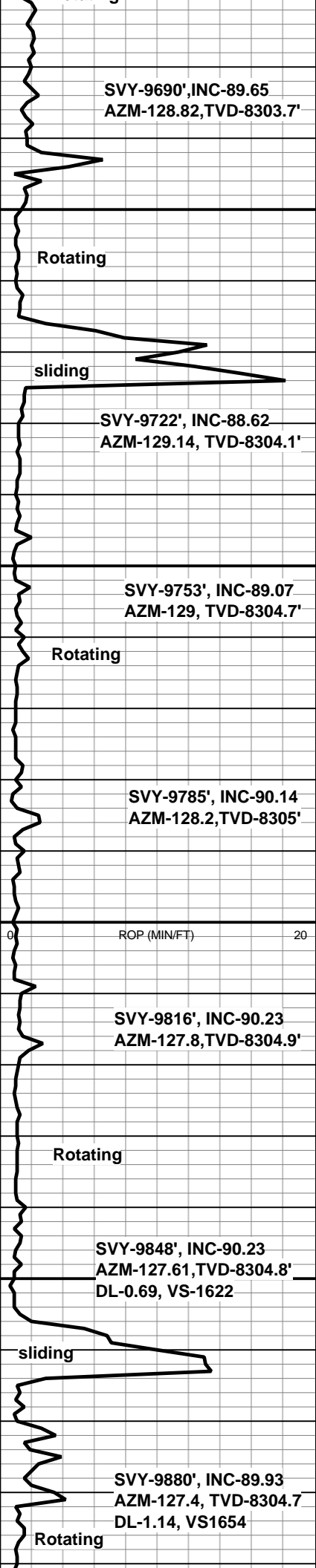
DOL:OFFWH-GY-DKGY,FRM-HD,S
BLKY-BLKY,GRNY-SUC,G-POR,
TXT: GRNY-SUC

DOL:OFFWH-GY-DKGY,FRM-HD,S
BLKY-BLKY,GRNY-SUC,G-POR,
TXT: GRNY-SUC

DOL:OFFWH-GY-DKGY,FRM-HD,S
BLKY-BLKY,GRNY-SUC,G-POR,
TXT: GRNY-SUC







BLKY-BLKY,GRNY-SUC,G-POR,
TXT: GRNY-SUC

DOL:OFFWH-GY-DKGY,FRM-HD,S
BLKY-BLKY,GRNY-SUC,G-POR,
TXT: GRNY-SUC

DOL:OFFWH-GY-DKGY,FRM-HD,S
BLKY-BLKY,GRNY-SUC,G-POR,
TXT: GRNY-SUC

DOL:OFFWH-GY-DKGY,FRM-HD,S
BLKY-BLKY,GRNY-SUC,G-POR,
TXT: GRNY-SUC

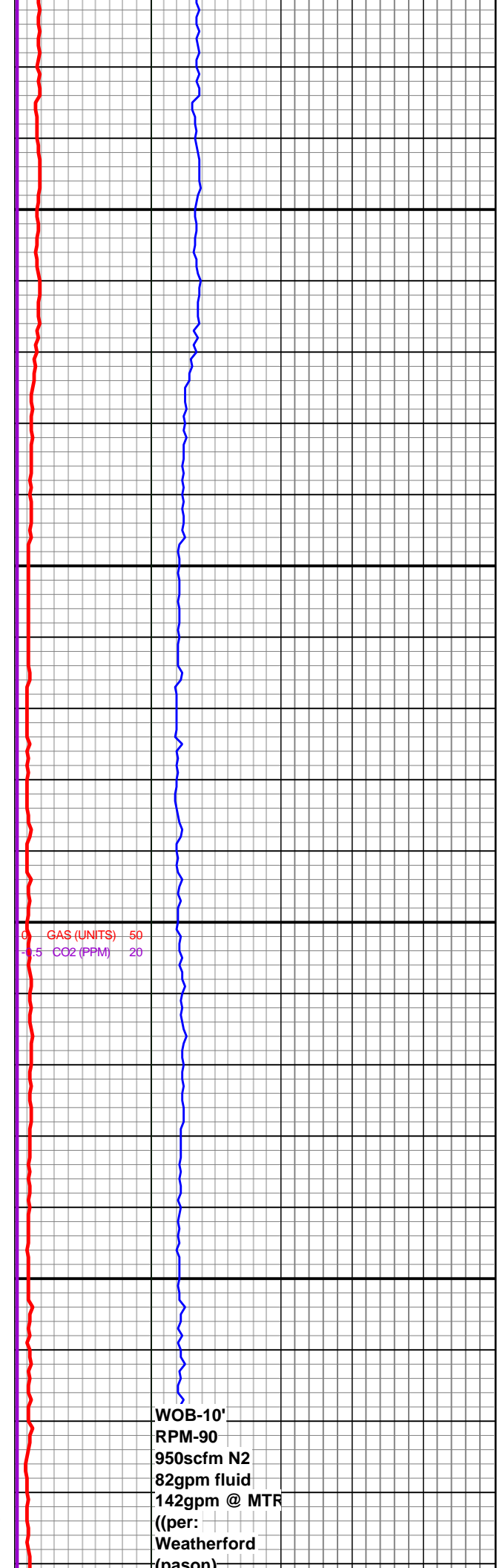
DOL:OFFWH-GY-DKGY,FRM-HD,S
BLKY-BLKY,GRNY-SUC,G-POR,
TXT: GRNY-SUC

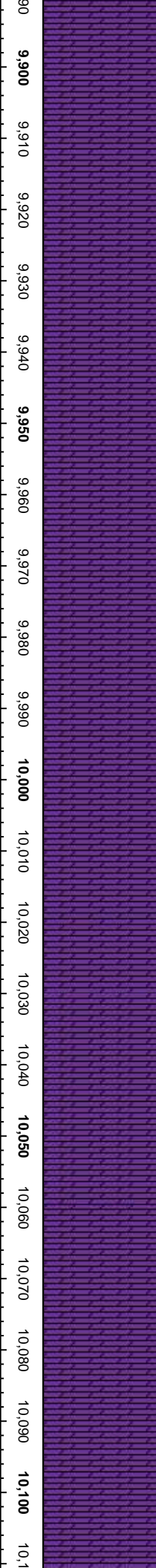
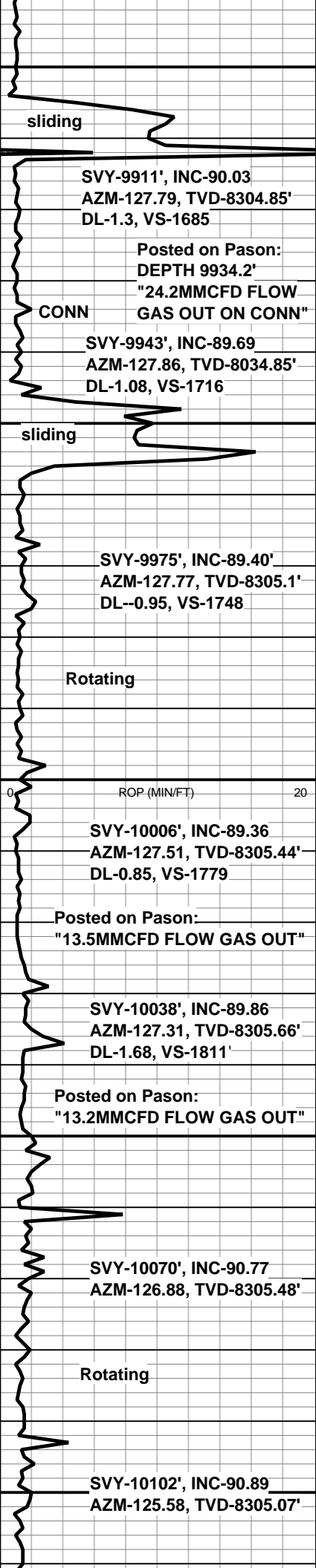
DOL:OFFWH-GY-DKGY,FRM-HD,S
BLKY-BLKY,GRNY-SUC,G-POR,
TXT: GRNY-SUC

DOL:OFFWH-GY-DKGY,FRM-HD,S
BLKY-BLKY,GRNY-SUC,G-POR,
TXT: GRNY-SUC

DOL:OFFWH-GY-DKGY,FRM-HD,S
BLKY-BLKY,GRNY-SUC,G-POR,
TXT: GRNY-SUC

DOL:OFFWH(30%)-DKGY(70%),
FRM-HD,SBLKY-BLKY,GRNY-SUC,
G-POR, TXT: GRNY-SUC





02JUL13 DRLG @ 9902'

DOL:OFFWH(10%)-DKGY(90%),
FRM-HD,SBLKY-BLKY,GRNY-SUC,
G-POR, TXT: GRNY-SUC

DOL:OFFWH(10%)-DKGY(90%),
FRM-HD,SBLKY-BLKY,GRNY-SUC,
G-POR, TXT: GRNY-SUC

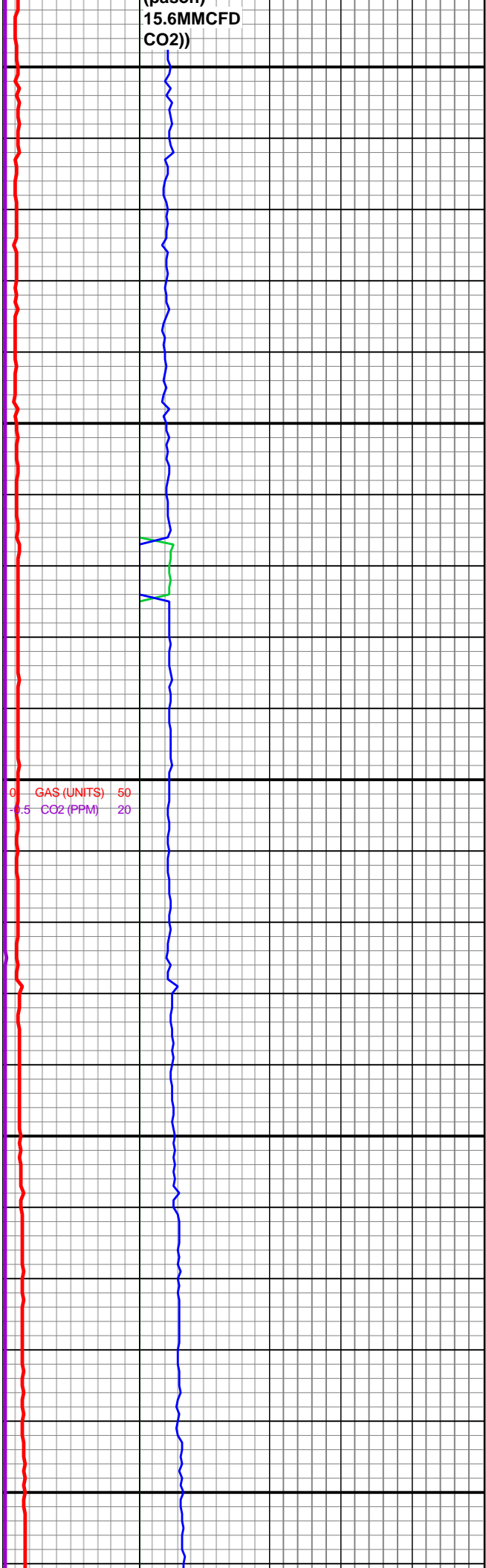
DOL:OFFWH(10%)-DKGY(90%),
FRM-HD,SBLKY-BLKY,GRNY-SUC,
G-POR, TXT: GRNY-SUC

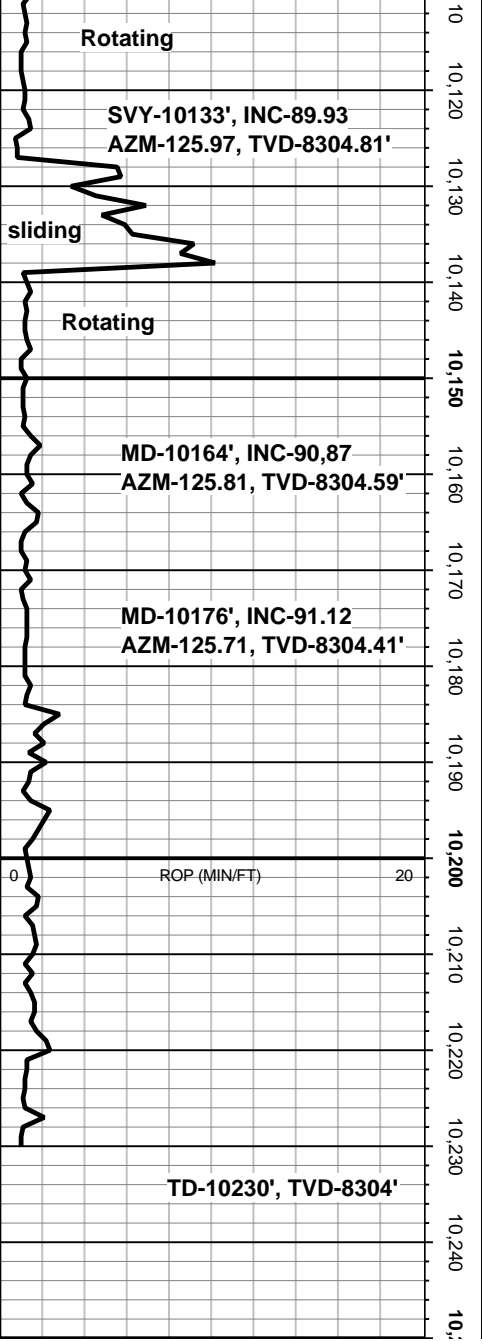
DOL:OFFWH(10%)-DKGY(90%),
FRM-HD,SBLKY-BLKY,GRNY-SUC,
G-POR, TXT: GRNY-SUC

DOL:OFFWH(10%)-DKGY(90%),
FRM-HD,SBLKY-BLKY,GRNY-SUC,
G-POR, TXT: GRNY-SUC

DOL:OFFWH(10%)-DKGY(90%),
FRM-HD,SBLKY-BLKY,GRNY-SUC,
G-POR, TXT: GRNY-SUC

DOL:OFFWH(10%)-DKGY(90%),
FRM-HD,SBLKY-BLKY,GRNY-SUC,
G-POR, TXT: GRNY-SUC





DOL:OFFWH(10%)-DKGY(90%),
FRM-HD,SBLKY-BLKY,GRNY-SUC,
G-POR, TXT: GRNY-SUC

DOL:OFFWH-DKGY,FRM-HD,SBLK
Y-BLKY,GRNY-SUC, G-POR, TXT:
GRNY-SUC

DOL:OFFWH-DKGY,FRM-HD,SBLK
Y-BLKY,GRNY-SUC, G-POR, TXT:
GRNY-SUC

DOL:OFFWH-DKGY,FRM-HD,SBLK
Y-BLKY,GRNY-SUC, G-POR, TXT:
GRNY-SUC

DOL:OFFWH-DKGY,FRM-HD,SBLK
Y-BLKY,GRNY-SUC, G-POR, TXT:
GRNY-SUC

03JUL2013 TD @ 10230',
TVD-8304'

Thanks for using Above
Enterprise
and Leon Walters and Josh
Adams

